

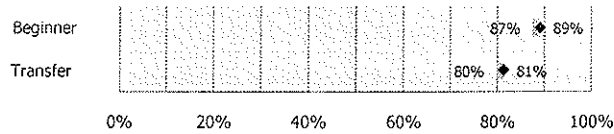
#### Part-Time Beginners

Vol. 17, No. 2.2

#### Persistence to Second Semester by Cohort Status

	Began	Retained	Retention Rate
Beginner	14,538	12,944	89.0%
Transfer	4,958	4,034	81.4%
Exclusions	8		
<b>Overall</b>	<b>19,496</b>	<b>16,978</b>	<b>87.1%</b>

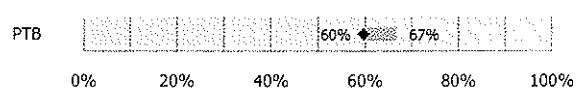
Five-Year Span in Retention Rates, 2003-2007 Cohorts  
◆ Current



#### Part-Time Beginners Only (PTB)

	Began	Retained	Retention Rate
PTB	865	516	59.7%
% of Beginners	5.9%	4.0%	
% of Overall	4.4%	3.0%	

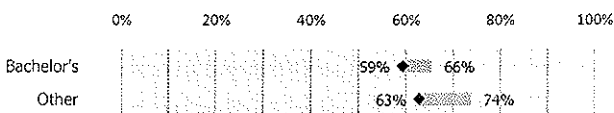
Five-Year Span in Retention Rates, 2003-2007 Cohorts  
◆ Current



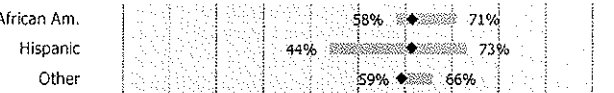
#### Retention Rates by Selected Characteristics (Part-Time Beginners)

By Intended Degree	Began	Retained	Retention Rate
Bachelor's	779	462	59.3%
Other	86	54	62.8%

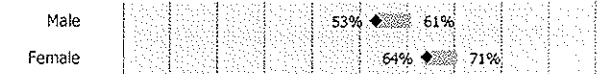
Five-Year Span in Retention Rates, 2003-2007 Cohorts  
◆ Current



By Ethnicity	Began	Retained	Retention Rate
African Am.	122	75	61.5%
Hispanic	44	27	61.4%
Other	699	414	59.2%



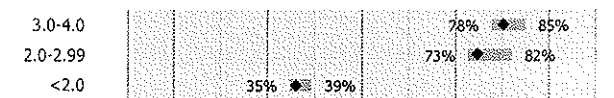
By Sex	Began	Retained	Retention Rate
Male	353	188	53.3%
Female	512	328	64.1%



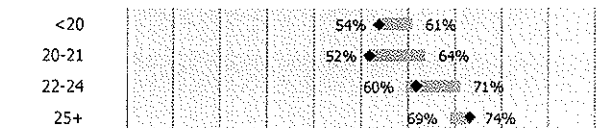
By Residency	Began	Retained	Retention Rate
Resident	800	493	61.6%
Non-Res.	65	23	35.4%



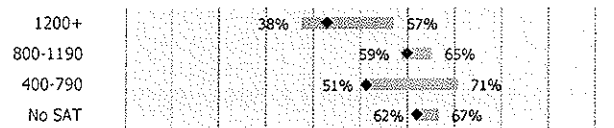
By First Semester GPA	Began	Retained	Retention Rate
3.0-4.0	299	240	80.3%
2.0-2.99	186	139	74.7%
<2.0	380	137	36.1%



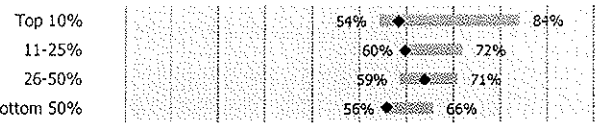
By Age at Time of Entry	Began	Retained	Retention Rate
<20	417	224	53.7%
20-21	120	62	51.7%
22-24	89	55	61.8%
25+	239	175	73.2%



By Combined SAT Scores Ranges	Began	Retained	Retention Rate
1200+	28	12	42.9%
800-1190	259	155	59.8%
400-790	86	44	51.2%
No SAT	492	305	62.0%



By HS Rank Ranges	Began	Retained	Retention Rate
Top 10%	24	14	58.3%
11-25%	72	43	59.7%
26-50%	169	108	63.9%
Bottom 50%	285	159	55.8%

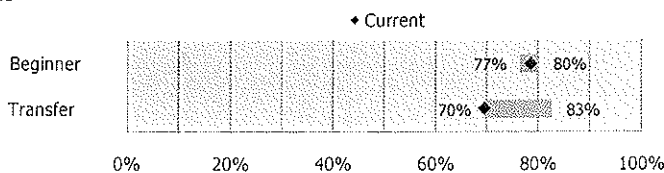




**Persistence to Second Semester by Cohort Status**

	Began	Retained	Retention Rate
Beginner	435	342	78.6%
Transfer	197	137	69.5%
Exclusions	1		
Overall	632	479	75.8%

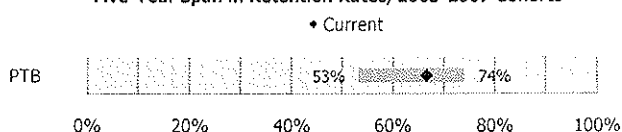
**Five-Year Span in Retention Rates, 2003-2007 Cohorts**



**Part-Time Beginners Only (PTB)**

	Began	Retained	Retention Rate
PTB	54	36	66.7%
% of Beginners	12.4%	10.5%	
% of Overall	8.5%	7.5%	

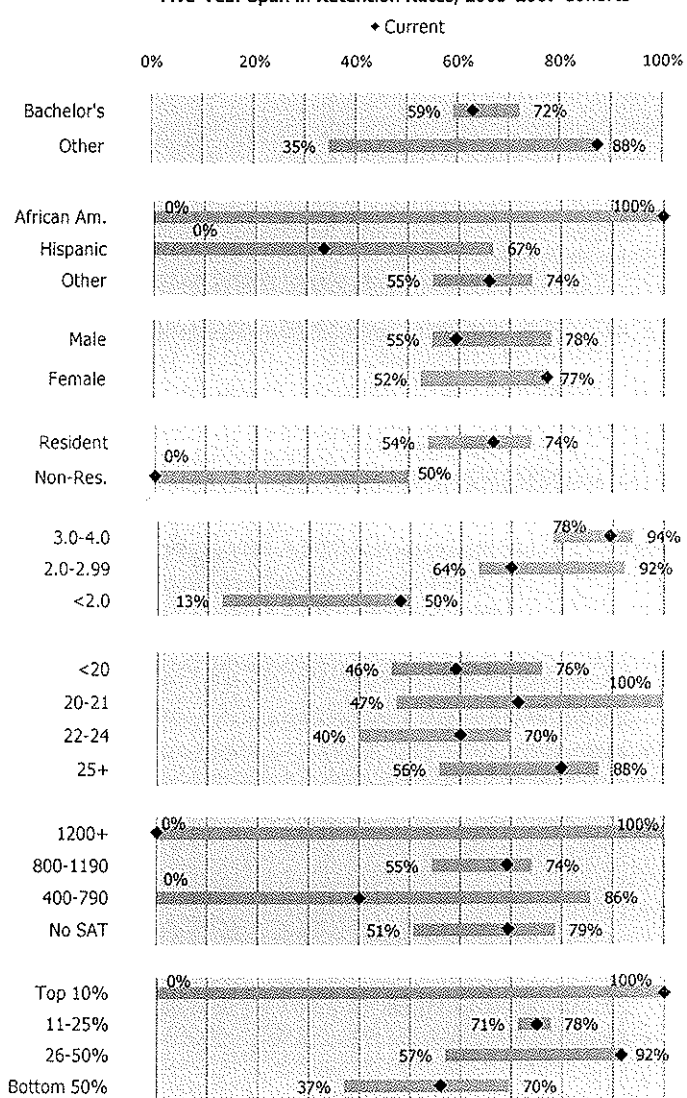
**Five-Year Span in Retention Rates, 2003-2007 Cohorts**



**Retention Rates by Selected Characteristics (Part-Time Beginners)**

	Began	Retained	Retention Rate
<b>By Intended Degree</b>			
Bachelor's	46	29	63.0%
Other	**	**	87.5%
<b>By Ethnicity</b>			
African Am.	**	**	100.0%
Hispanic	**	**	33.3%
Other	47	31	66.0%
<b>By Sex</b>			
Male	32	19	59.4%
Female	22	17	77.3%
<b>By Residency</b>			
Resident	54	36	66.7%
Non-Res.	**	**	0.0%
<b>By First Semester GPA</b>			
3.0-4.0	19	17	89.5%
2.0-2.99	**	**	70.0%
<2.0	25	12	48.0%
<b>By Age at Time of Entry</b>			
<20	22	13	59.1%
20-21	**	**	71.4%
22-24	**	**	60.0%
25+	15	12	80.0%
<b>By Combined SAT Scores Ranges</b>			
1200+	**	**	0.0%
800-1190	13	9	69.2%
400-790	**	**	40.0%
No SAT	36	25	69.4%
<b>By HS Rank Ranges</b>			
Top 10%	**	**	100.0%
11-25%	**	**	75.0%
26-50%	12	11	91.7%
Bottom 50%	25	14	56.0%

**Five-Year Span in Retention Rates, 2003-2007 Cohorts**



\*\*Began cell contains 10 or fewer students