

## Undergraduate Retention Report

### Persistence to Second Year - 2006 Cohort

#### Part-Time Beginners

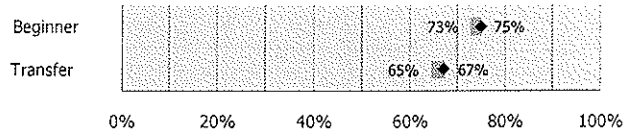
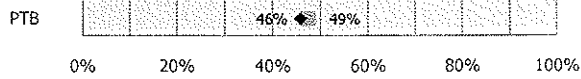
#### Vol. 17, No. 1.2

**Persistence to Second Year by Cohort Status**

	Began	Retained	Retention Rate
Beginner	14,111	10,572	74.9%
Transfer	5,291	3,545	67.0%
Exclusions	5		
<b>Overall</b>	<b>19,402</b>	<b>14,117</b>	<b>72.8%</b>

**Part-Time Beginners Only (PTB)**

	Began	Retained	Retention Rate
PTB	933	427	45.8%
% of Beginners	6.6%	4.0%	
% of Overall	4.8%	3.0%	

**Five-Year Span in Retention Rates, 2002-2006 Cohorts**  
 ♦ Current

**Five-Year Span in Retention Rates, 2002-2006 Cohorts**  
 ♦ Current

**Retention Rates by Selected Characteristics (Part-Time Beginners)**
**By Intended Degree**

Bachelor's	822	371	45.1%
Other	111	56	50.5%

**By Ethnicity**

African Am.	73	27	37.0%
Hispanic	50	16	32.0%
Other	810	384	47.4%

**By Sex**

Male	390	178	45.6%
Female	543	249	45.9%

**By Residency**

Resident	860	394	45.8%
Non-Res.	73	33	45.2%

**By First Semester GPA**

3.0-4.0	354	239	67.5%
2.0-2.99	190	116	61.1%
<2.0	389	72	18.5%

**By Age at Time of Entry**

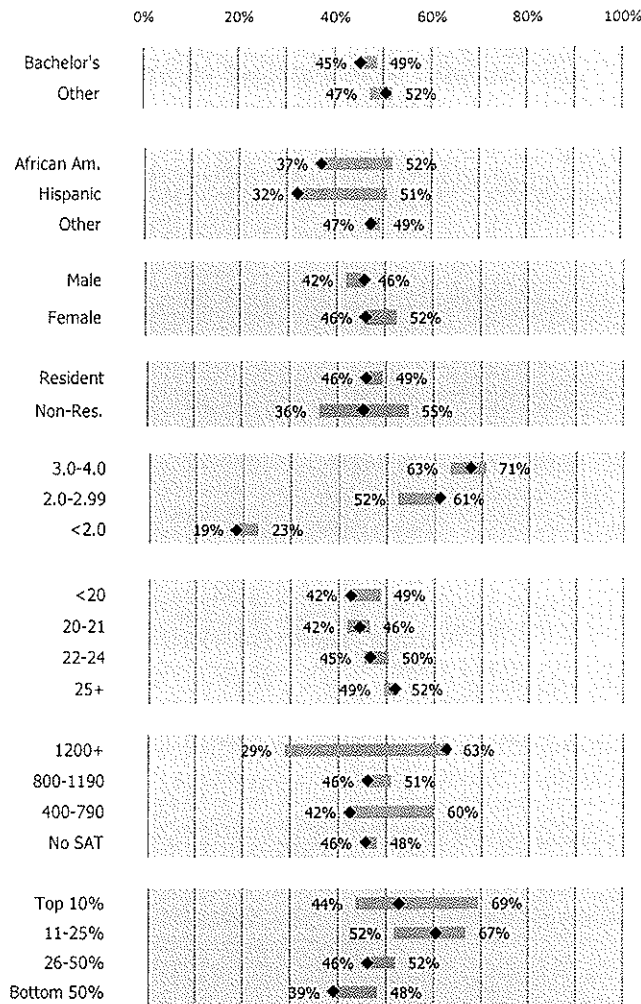
<20	427	181	42.4%
20-21	131	58	44.3%
22-24	114	53	46.5%
25+	261	135	51.7%

**By Combined SAT Scores Ranges**

1200+	16	10	62.5%
800-1190	311	143	46.0%
400-790	78	33	42.3%
No SAT	528	241	45.6%

**By HS Rank Ranges**

Top 10%	19	10	52.6%
11-25%	81	49	60.5%
26-50%	191	88	46.1%
Bottom 50%	310	121	39.0%

**Five-Year Span in Retention Rates, 2002-2006 Cohorts**  
 ♦ Current




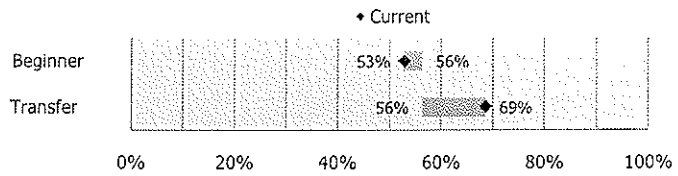
**Persistence to Second Year by Cohort Status**

	Began	Retained	Retention Rate
Beginner	384	203	52.9%
Transfer	204	140	68.6%
Exclusions	0		
<b>Overall</b>	<b>588</b>	<b>343</b>	<b>58.3%</b>

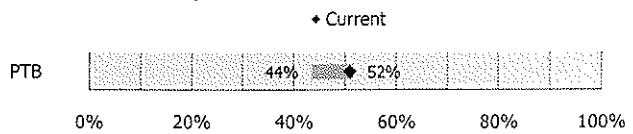
**Part-Time Beginners Only (PTB)**

	Began	Retained	Retention Rate
PTB	53	27	50.9%
% of Beginners	13.8%	13.3%	
% of Overall	9.0%	7.9%	

**Five-Year Span in Retention Rates, 2002-2006 Cohorts**



**Five-Year Span in Retention Rates, 2002-2006 Cohorts**



**Retention Rates by Selected Characteristics (Part-Time Beginners)**

**By Intended Degree**

Bachelor's	45	26	57.8%
Other	**	**	12.5%

**By Ethnicity**

African Am.	**	**	50.0%
Hispanic	**	**	0.0%
Other	46	25	54.3%

**By Sex**

Male	19	9	47.4%
Female	34	18	52.9%

**By Residency**

Resident	52	27	51.9%
Non-Res.	**	**	0.0%

**By First Semester GPA**

3.0-4.0	23	16	69.6%
2.0-2.99	14	4	28.6%
<2.0	16	7	43.8%

**By Age at Time of Entry**

<20	23	11	47.8%
20-21	**	**	77.8%
22-24	**	**	40.0%
25+	16	7	43.8%

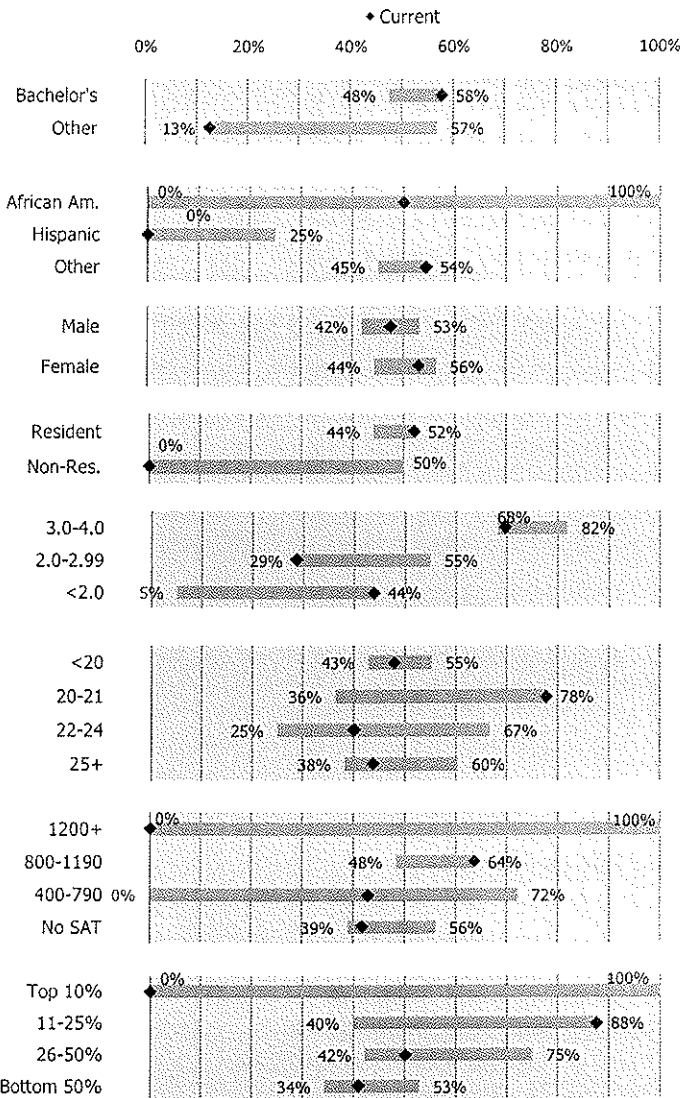
**By Combined SAT Scores Ranges**

1200+	**	**	0.0%
800-1190	22	14	63.6%
400-790	**	**	42.9%
No SAT	24	10	41.7%

**By HS Rank Ranges**

Top 10%	**	**	0.0%
11-25%	**	**	87.5%
26-50%	14	7	50.0%
Bottom 50%	22	9	40.9%

**Five-Year Span in Retention Rates, 2002-2006 Cohorts**



\*\*Began cell contains 10 or fewer students  
University Reporting and Research  
www.indiana.edu/~urr