

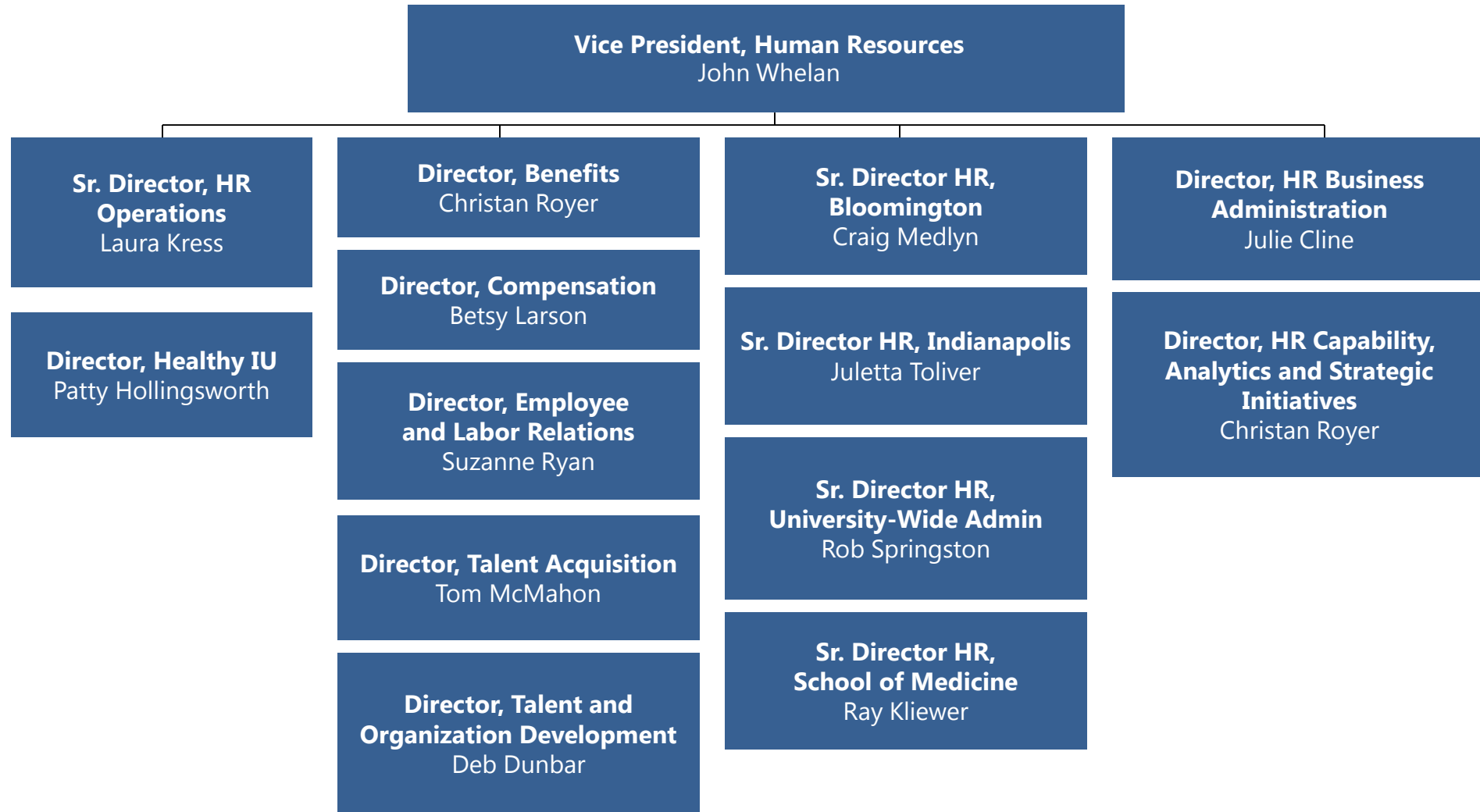


IU Human Resources

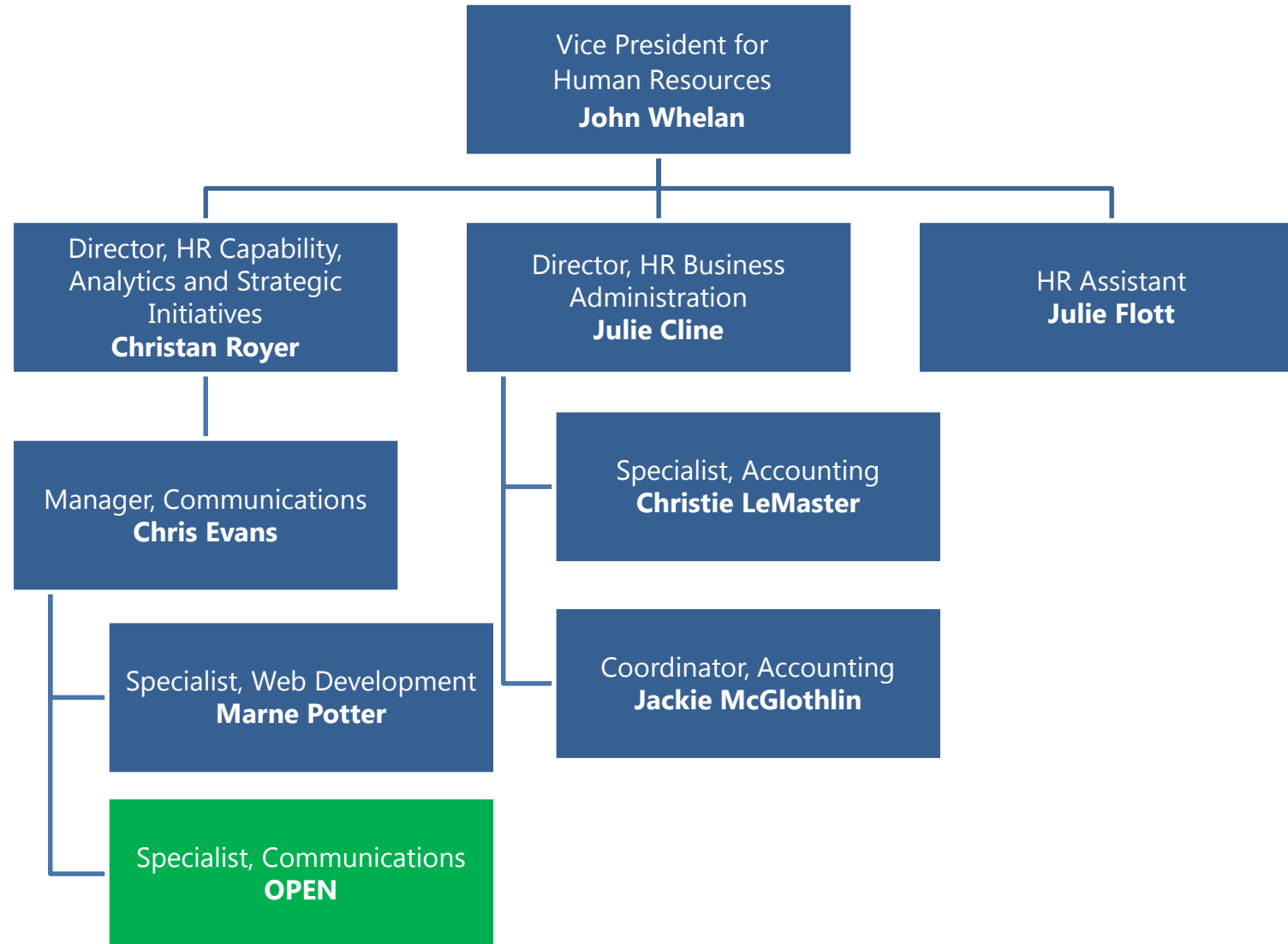
HR Organization Structure

Effective 07/01/2018

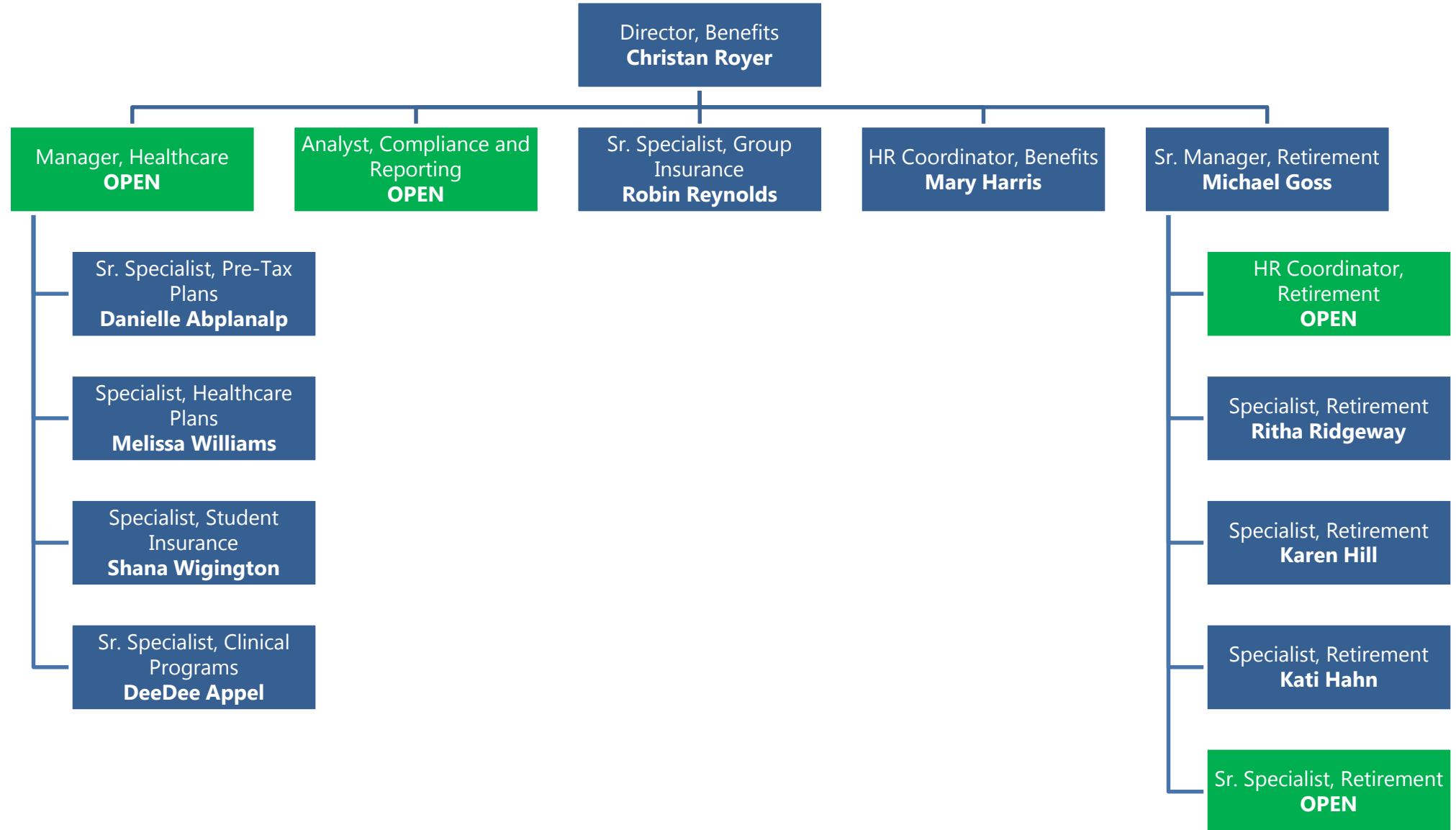
IU Human Resources Function



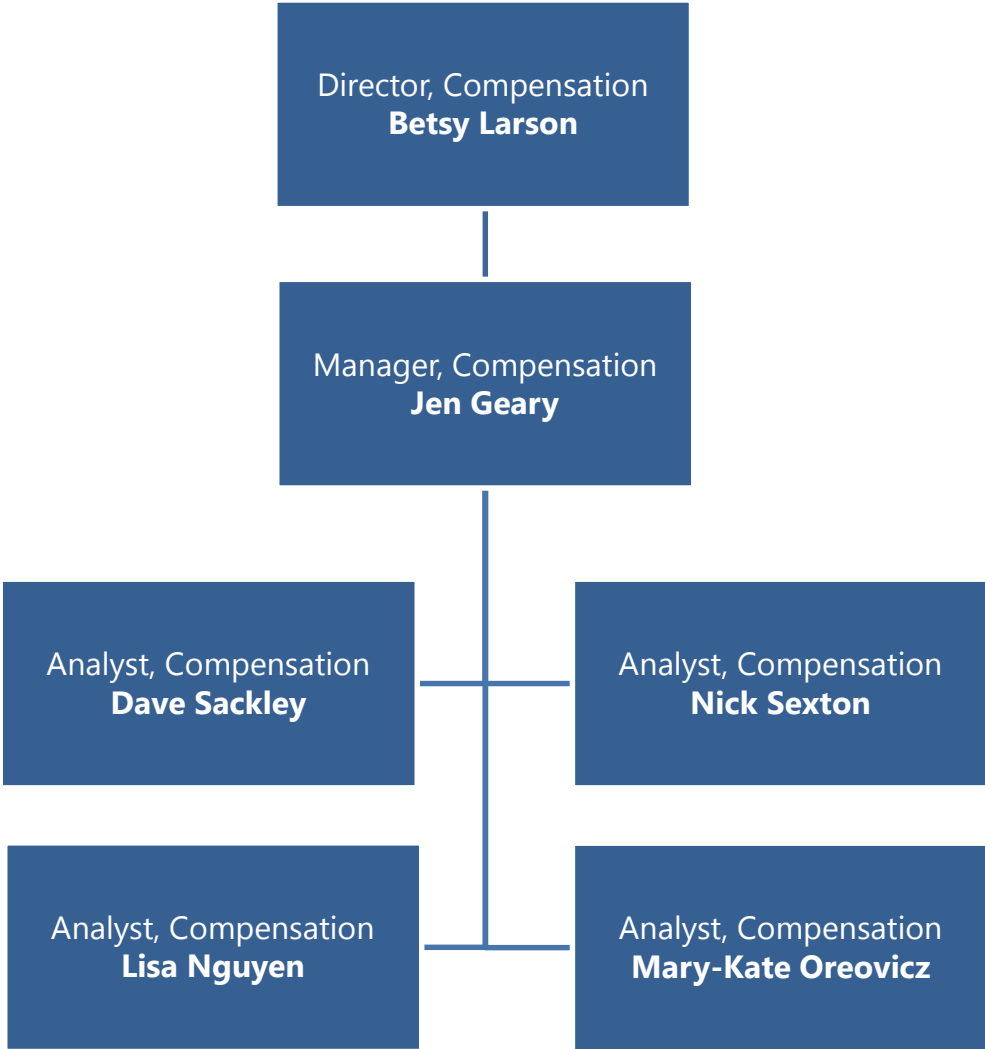
HR Function Administration



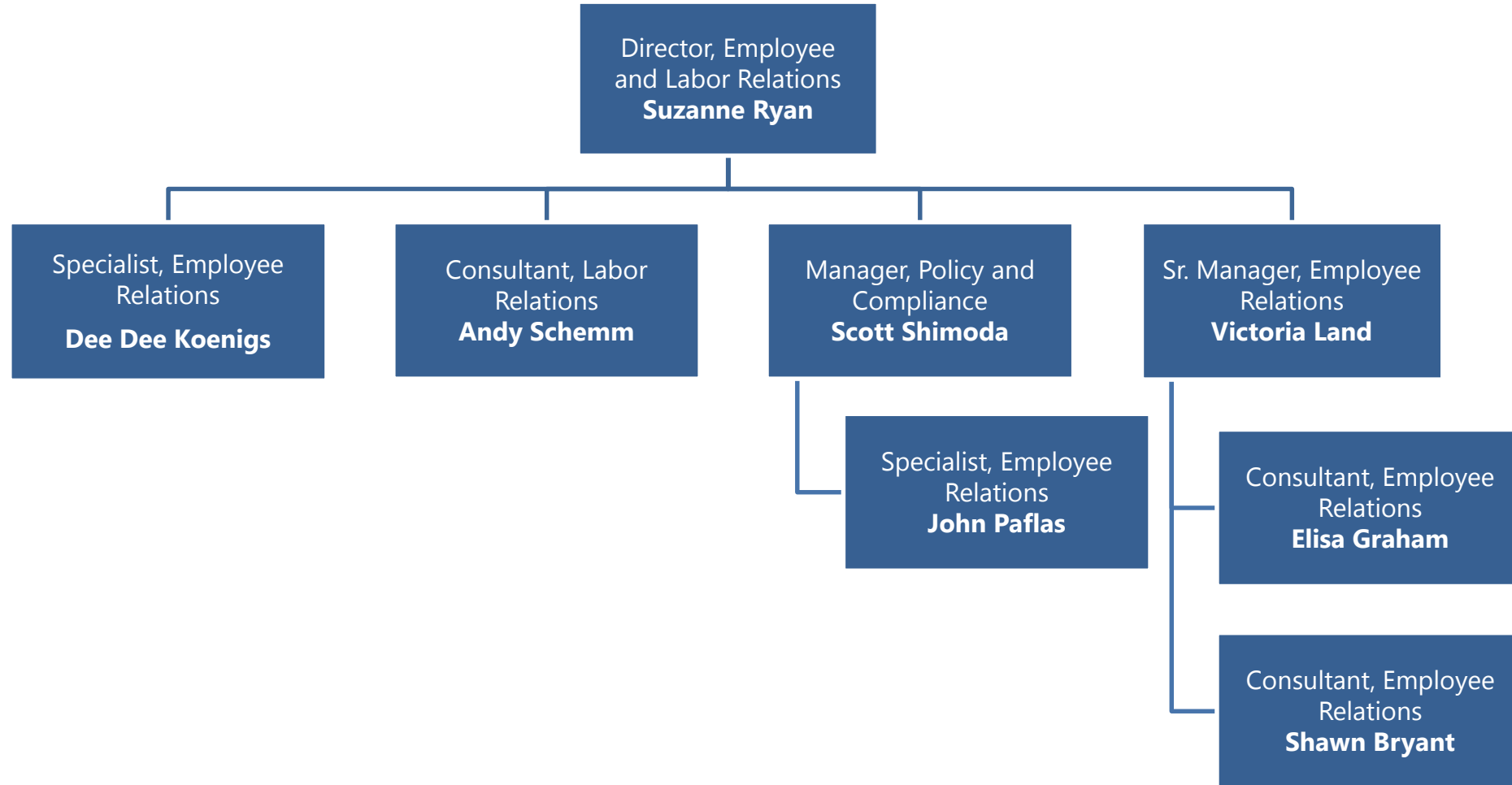
Benefits COE



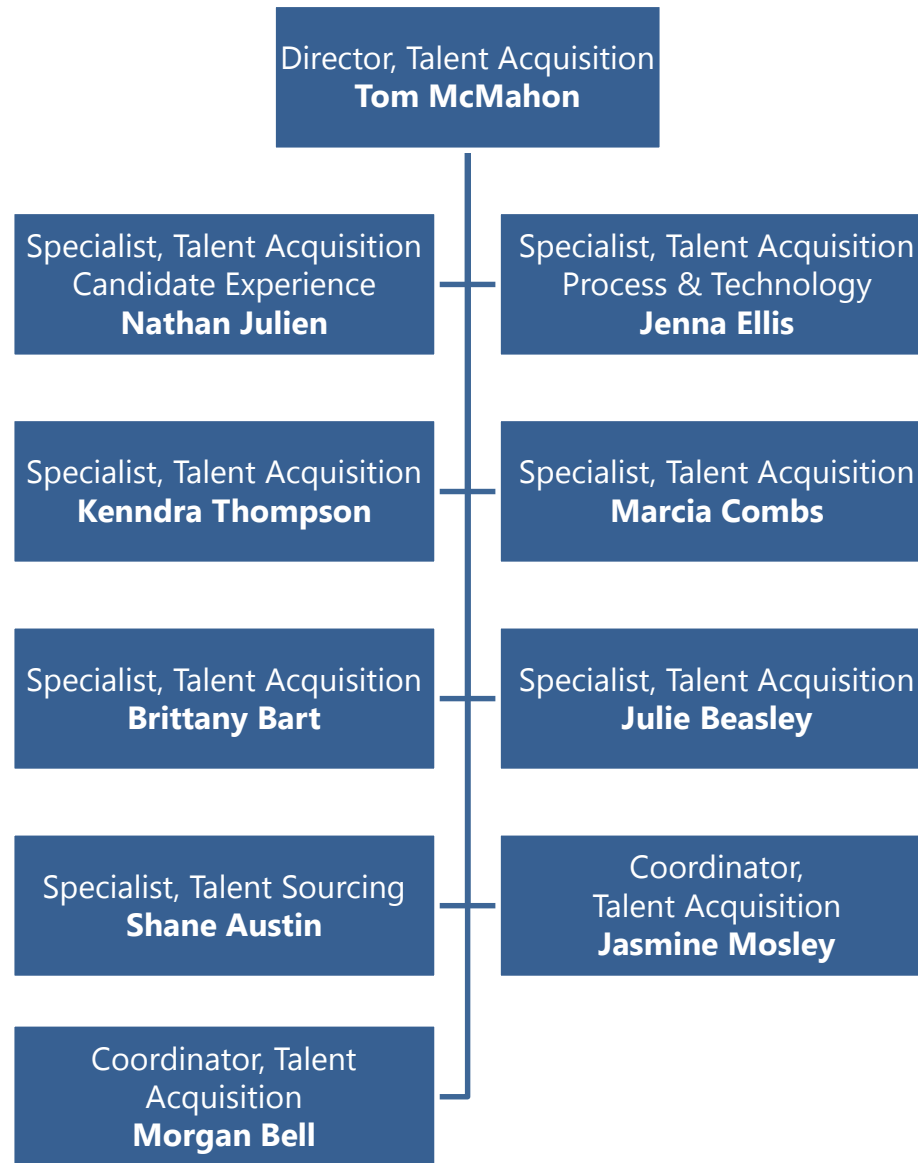
Compensation COE



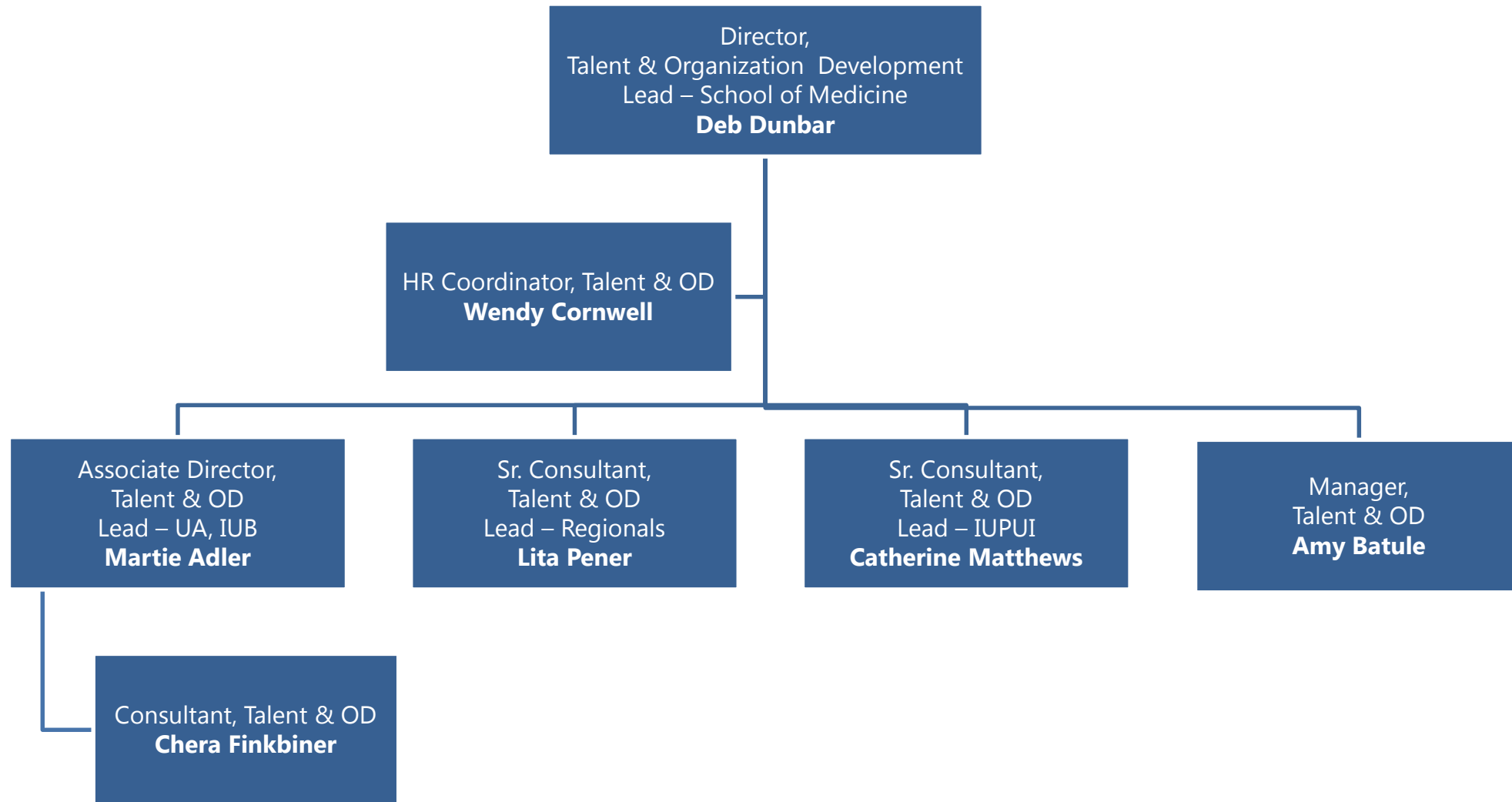
Employee & Labor Relations COE



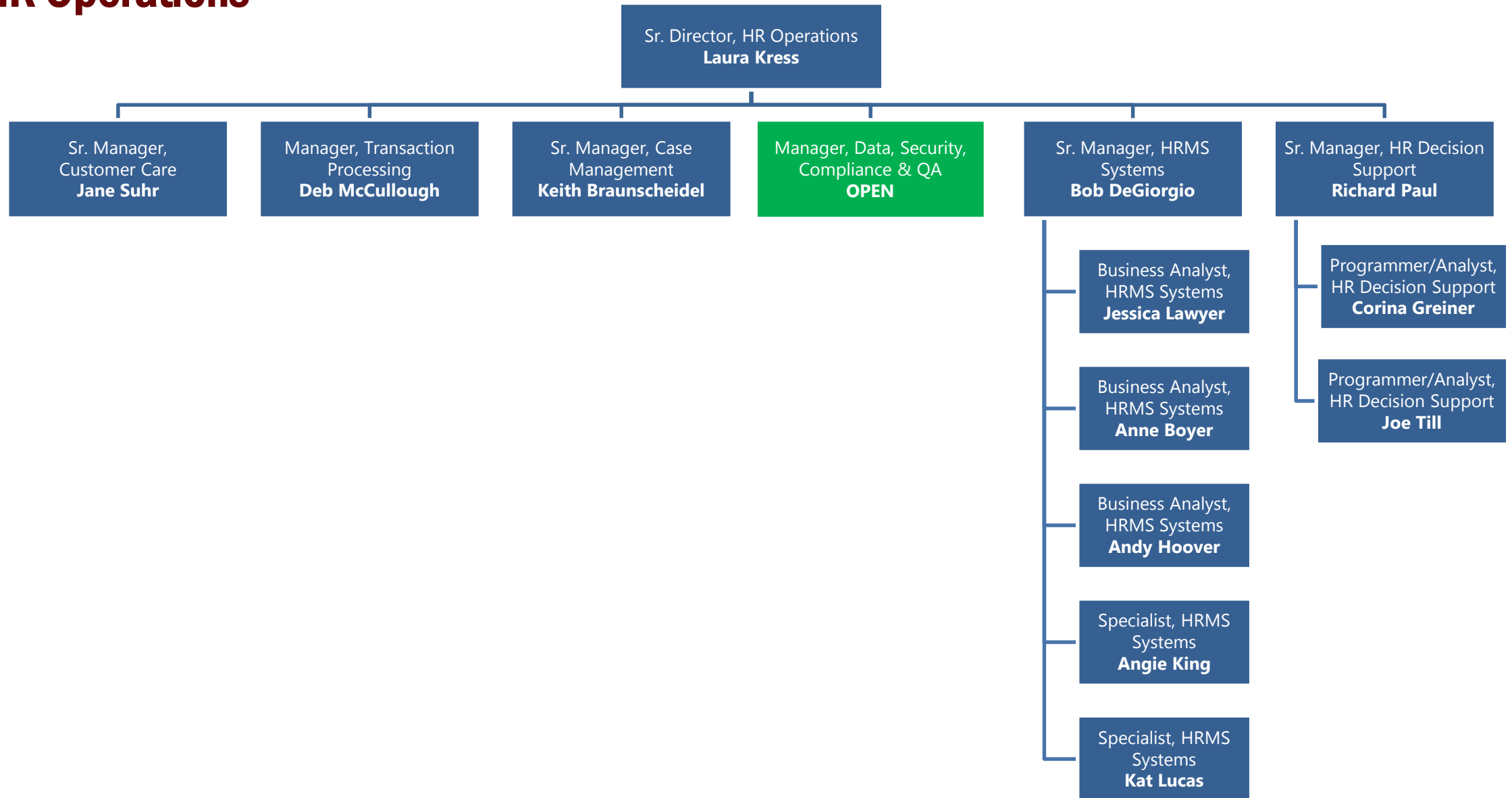
Talent Acquisition COE



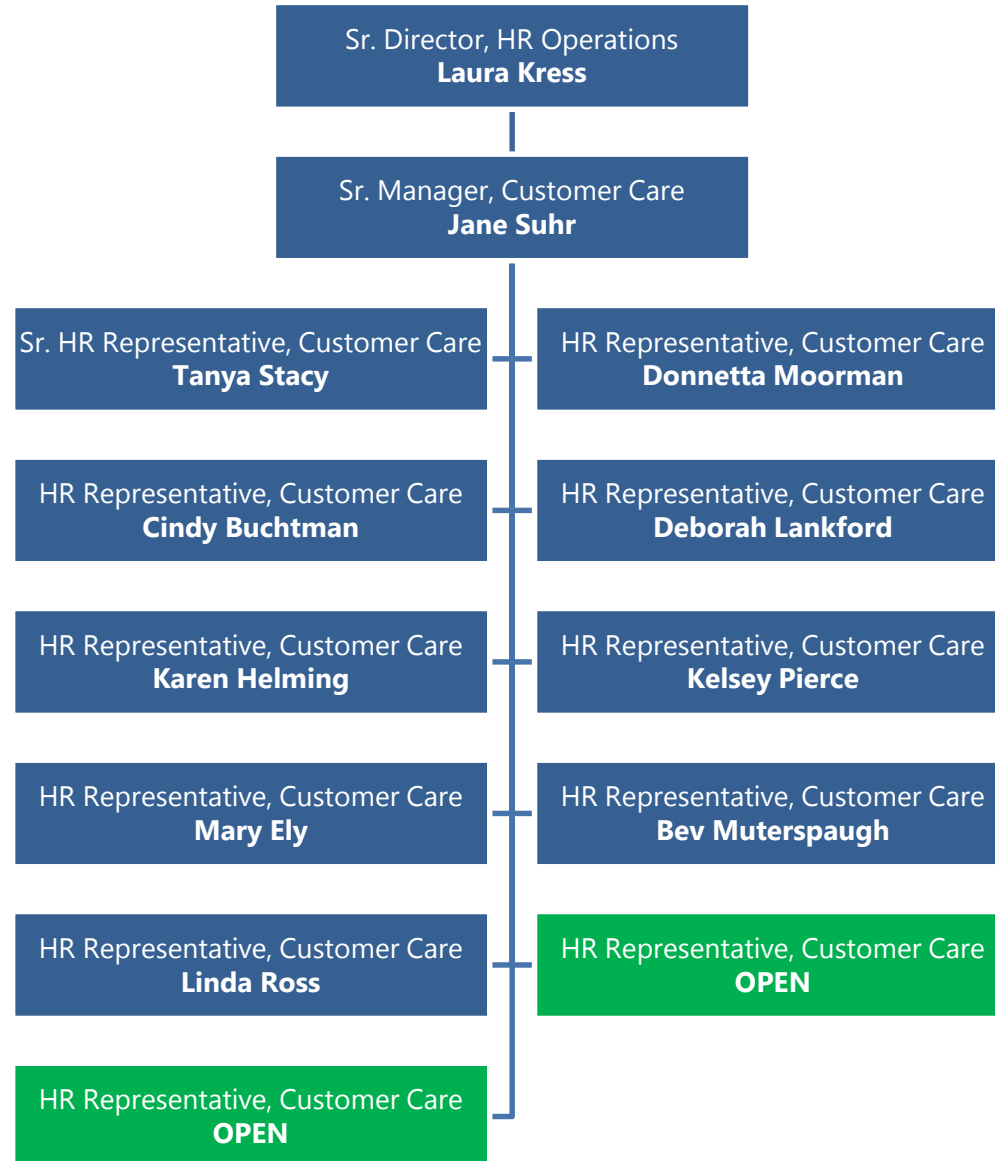
Talent & Organizational Development COE



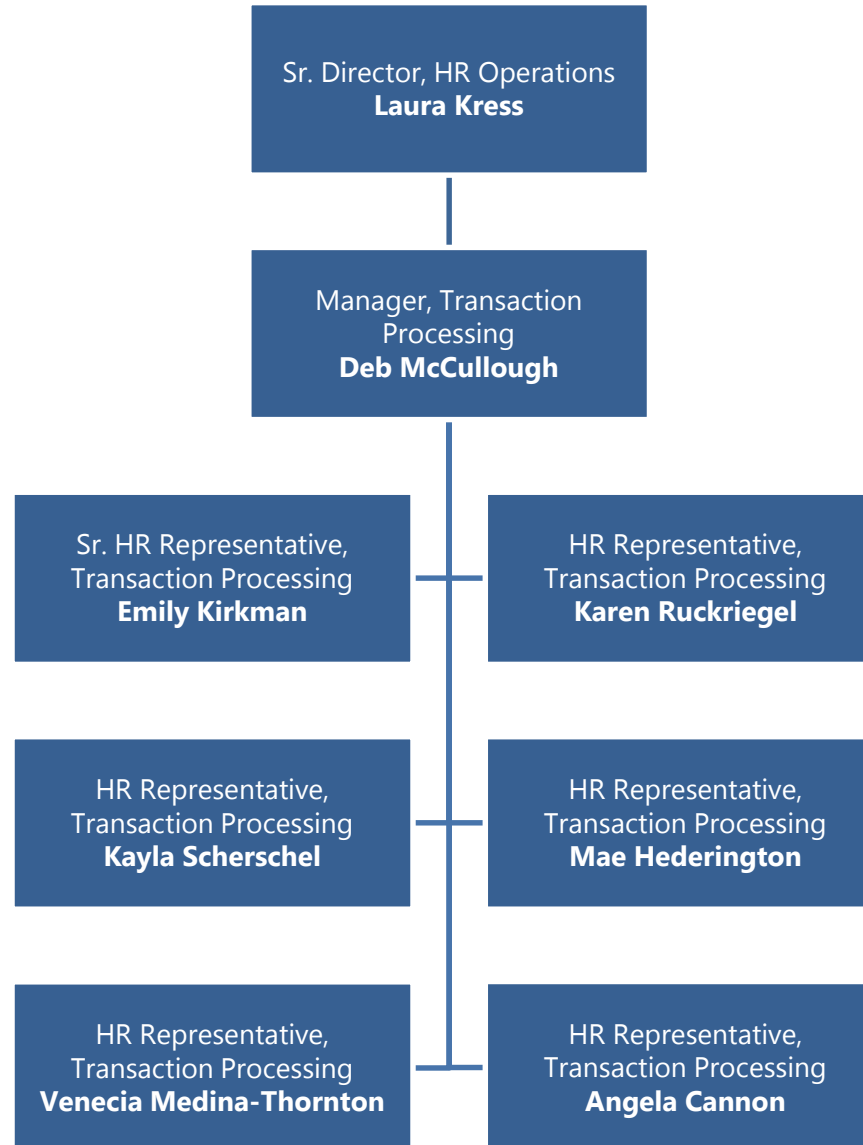
HR Operations



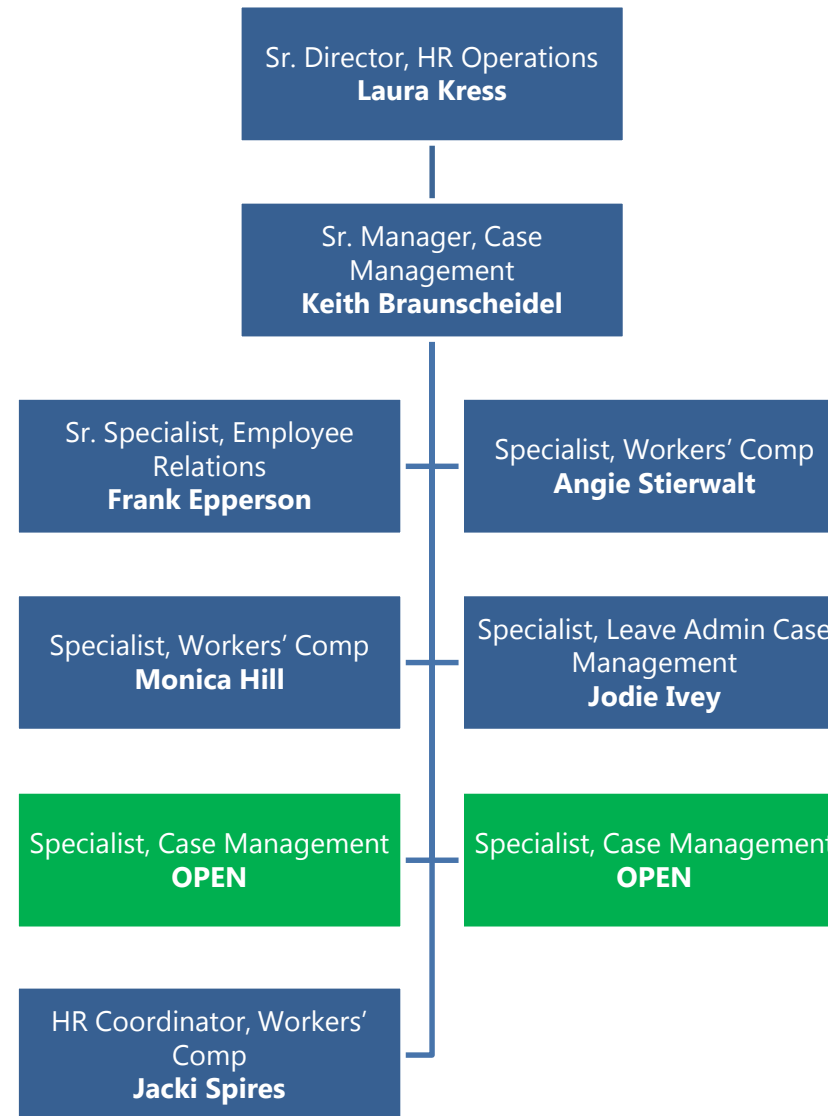
HR Operations – Customer Care



HR Operations – Transaction Services



HR Operations – Case Management



Healthy IU

