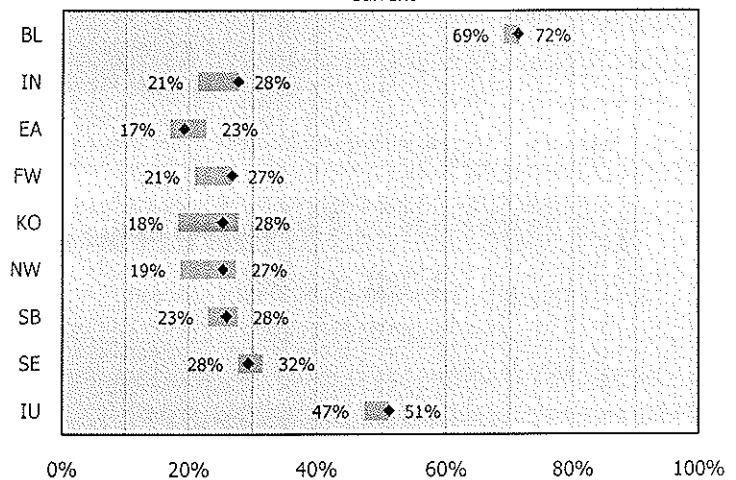


This report summarizes the data submitted to IPEDS with the Graduation Rates Survey. The graduation rate population is defined as full-time beginner (FTB), degree-seeking students who matriculated in either of the preceding summer sessions or in the fall of 2000, or students who began their coursework in high school and enrolled as traditional college students in the fall.

The first table below shows the overall graduation rates for the 2000 cohort. These rates provide the number of students who earned any degree within 150% of program length. The second table on this page explores the composition of the 2000 beginner cohort. These figures illustrate the diversity of students served by the IU campuses, and by extension, the representativeness of the graduation rates measure as it only involves full-time students.

Overall Graduation Rates by Campus (As reported to IPEDS)

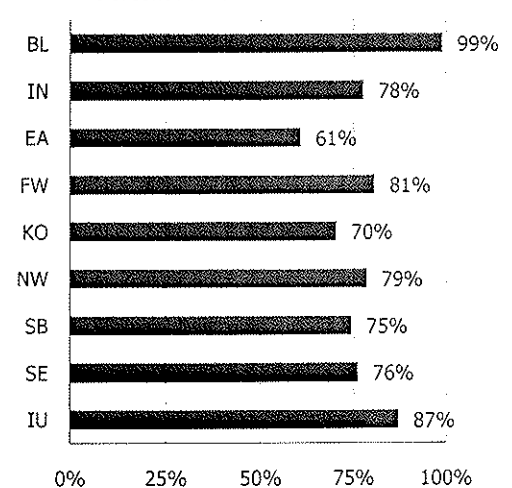
	Full-Time Beginners	Received Degree*	Graduation Rate
BL	6,862	4,890	71.3%
IN	2,473	687	27.8%
EA	249	48	19.3%
FW	753	202	26.8%
KO	347	88	25.4%
NW	517	131	25.3%
SB	637	165	25.9%
SE	700	206	29.4%
IU Total	12,538	6,417	51.2%

Five-Year Span in Graduation Rates, 1996-2000 Cohorts
 ♦ Current

Beginner Cohort Composition by Campus

	All Beginners	Full-time Beginners		Part-time Beginners	
		Count	%	Count	%
BL	6,924	6,862	99.1%	62	0.9%
IN	3,181	2,473	77.7%	708	22.3%
EA	410	249	60.7%	161	39.3%
FW	933	753	80.7%	180	19.3%
KO	493	347	70.4%	146	29.6%
NW	658	517	78.6%	141	21.4%
SB	855	637	74.5%	218	25.5%
SE	919	700	76.2%	219	23.8%
IU Total	14,373	12,538	87.2%	1,835	12.8%

FW - IU students only

* within 150% of program length

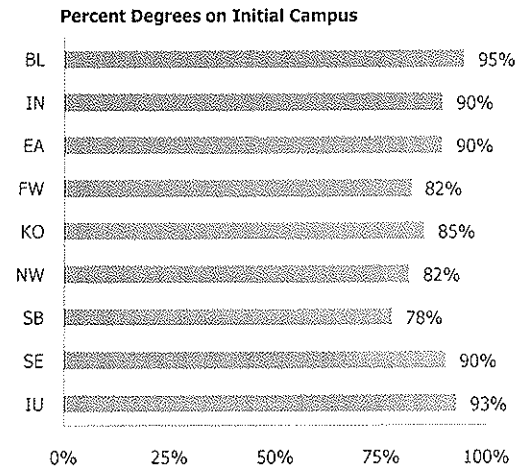
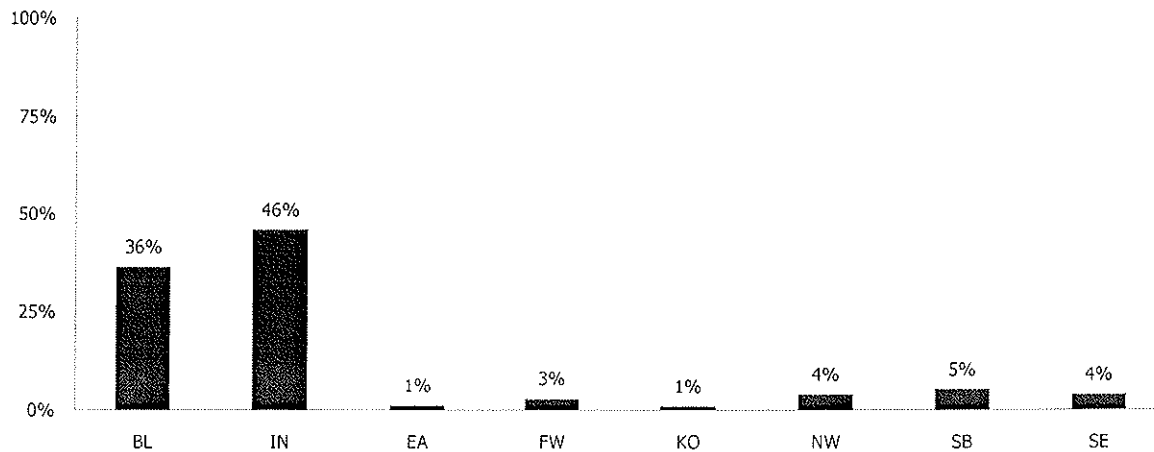
Percent Full-time


The first table below shows degrees by degree granting campus. This is divided between those students who originally enrolled at the degree granting campus (Initial IU Campus) and those who migrated to complete a degree at another IU campus (Destination IU Campus). For example, there were 4,890 degrees granted at Bloomington to first-time full-time degree-seeking students in the 2000 cohort, of which 4,634 started and finished at Bloomington and 256 started at Bloomington and finished at another IU campus.

The second table shows the distribution of degrees by campus for those students who obtained their degree at an IU campus other than the original campus of enrollment.

Degrees Completed within 150% of Program Length by Initial Campus

	Total Degrees	Initial IU Campus		Destination IU Campus	
		Count	%	Count	%
BL	4,890	4,634	94.8%	256	5.2%
IN	687	616	89.7%	71	10.3%
EA	48	43	89.6%	5	10.4%
FW	202	166	82.2%	36	17.8%
KO	88	75	85.2%	13	14.8%
NW	131	107	81.7%	24	18.3%
SB	165	128	77.6%	37	22.4%
SE	206	186	90.3%	20	9.7%
IU Total	6,417	5,955	92.8%	462	7.2%


Distribution of the Degrees by Destination Campus (n=462)


Overall Graduation Rates

Full-Time Beginners	Received Degree*	Graduation Rate	Five Year Low	Five Year High
347	88	25.4%	18.3%	27.8%

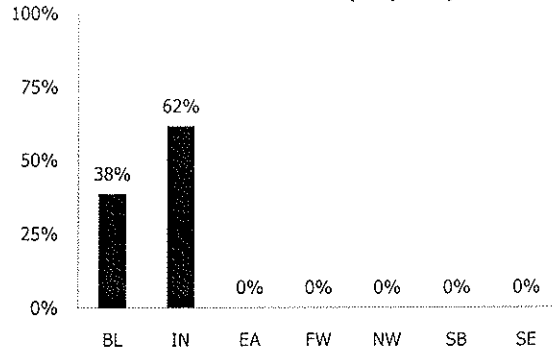
Beginner Cohort Composition

All Beginners	Full-time Beginners		Part-time Beginners	
	Count	%	Count	%
493	347	70.4%	146	29.6%

Degrees Completed within 150% of Program Length

Total Degrees	Initial IU Campus		Destination IU Campus	
	Count	%	Count	%
88	75	85.2%	13	14.8%

Distribution of KO Students Receiving Degrees at Destination Campus (n=13)



Graduation Rates by Selected Characteristics (Full-time Beginners)

By Ethnicity	Began	Degree	%
African Am.	**	**	0.0%
Hispanic	**	**	66.7%
Other	341	86	25.2%

By Sex	Began	Degree	%
Male	124	24	19.4%
Female	223	64	28.7%

By Residency	Began	Degree	%
Resident	344	87	25.3%
Non-Res.	**	**	33.3%

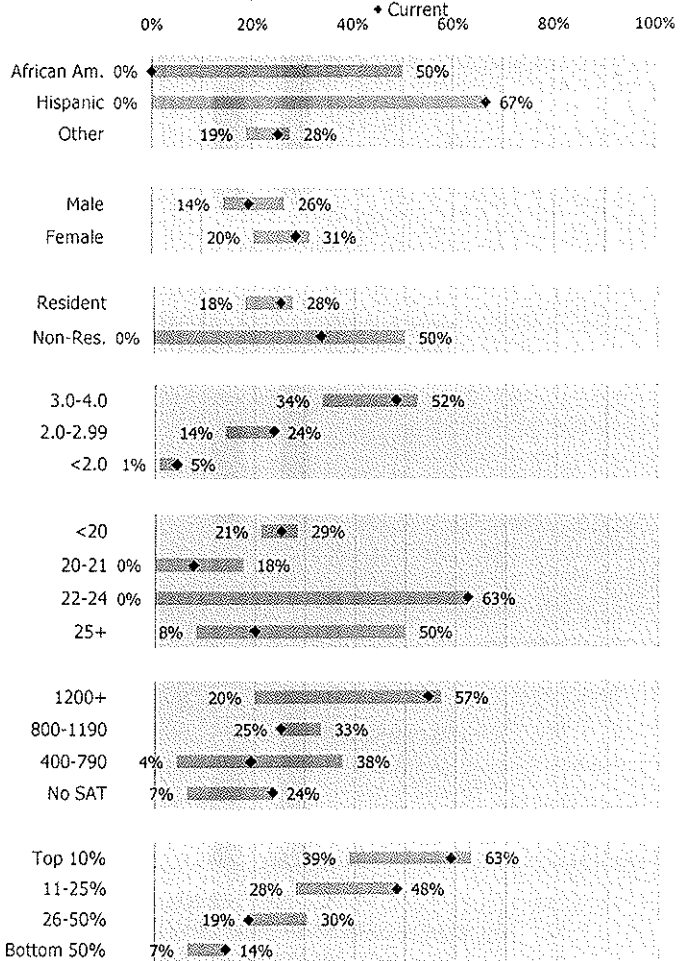
By First Semester GPA	Began	Degree	%
3.0-4.0	110	53	48.2%
2.0-2.99	126	30	23.8%
<2.0	111	5	4.5%

By Age at Time of Entry	Began	Degree	%
<20	321	81	25.2%
20-21	13	1	7.7%
22-24	**	**	62.5%
25+	**	**	20.0%

By Combined SAT Scores Ranges	Began	Degree	%
1200+	11	6	54.5%
800-1190	238	60	25.2%
400-790	26	5	19.2%
No SAT	72	17	23.6%

By HS Rank Ranges	Began	Degree	%
Top 10%	22	13	59.1%
11-25%	62	30	48.4%
26-50%	138	26	18.8%
Bottom 50%	105	15	14.3%

Five-Year Span in Graduation Rates, 1996-2000 Cohorts



* within 150% of program length

** Began cells contain fewer than 10 students

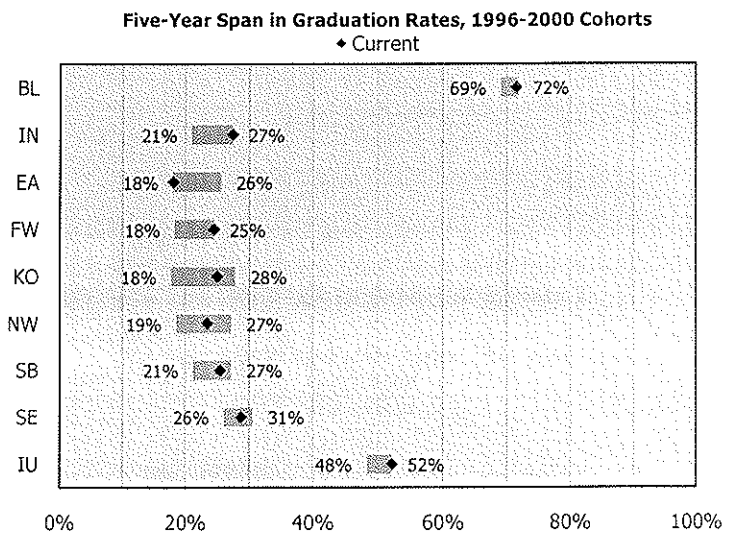
APPENDIX

This appendix summarizes the data submitted to external groups (e.g., USNWR, NCAA), which define the graduation rate population as full-time beginner (FTB), *bachelor's* degree-seeking students who matriculated in either of the preceding summer sessions or in the fall of 2000, or students who began their coursework in high school and enrolled as traditional college students in the fall.

The first table below shows the graduation rates for the 2000 cohort. These rates provide the number of students who earned a bachelor's degree within 6 years. The second table on this page explores the composition of the 2000 beginner cohort. These figures illustrate the diversity of students served by the IU campuses, and by extension, the representativeness of the graduation rates measure as it only involves full-time bachelor's degree students.

Graduation Rates of Bachelor's Degree Seeking Beginners (As reported to external groups)

	Full-Time Beginners	Received Degree*	Graduation Rate
BL	6,805	4,871	71.6%
IN	2,200	604	27.5%
EA	172	31	18.0%
FW	693	170	24.5%
KO	316	79	25.0%
NW	396	93	23.5%
SB	612	156	25.5%
SE	695	200	28.8%
IU Total	11,889	6,204	52.2%



Beginner Cohort Composition by Campus

	All Beginners	Full-time Bachelor's-Seeking Beginners		All Other Beginners**	
		Count	%	Count	%
BL	6,924	6,805	98.3%	119	1.7%
IN	3,181	2,200	69.2%	981	30.8%
EA	410	172	42.0%	238	58.0%
FW	933	693	74.3%	240	25.7%
KO	493	316	64.1%	177	35.9%
NW	658	396	60.2%	262	39.8%
SB	855	612	71.6%	243	28.4%
SE	919	695	75.6%	224	24.4%
IU Total	14,373	11,889	82.7%	2,484	17.3%

* within 150% of program length

** Part-time and other degree-seeking

