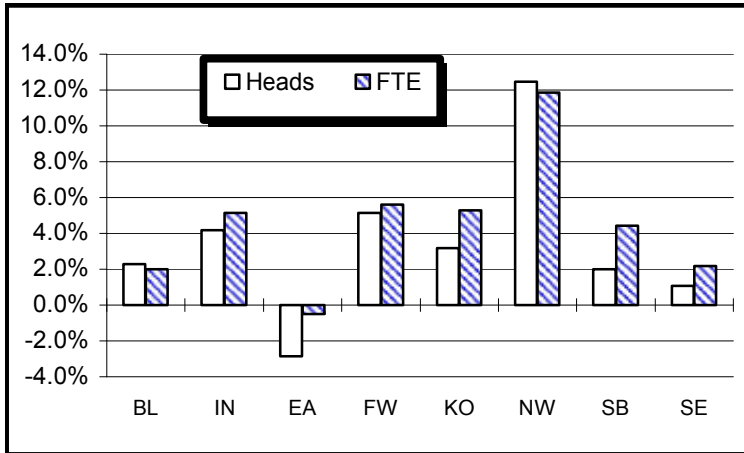


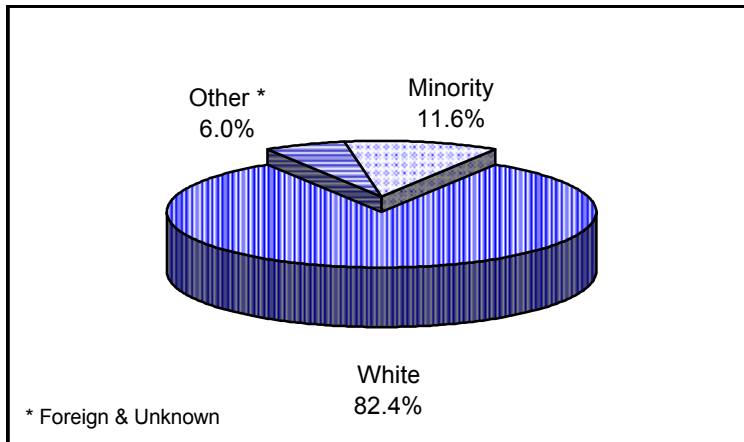


Second Semester, 2002-03  
Vol. 12, No. 2

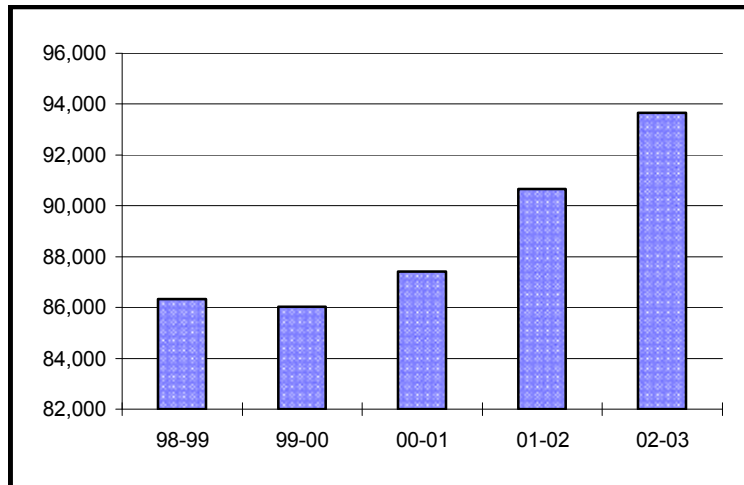
Enrollment Percent Change



Enrollment By Ethnicity



Historical Second Semester Enrollment



University Enrollment Summary

	#	% Change (a)
Headcount	93,664	3.3%
Credit Hours	1,036,142.5	3.6%
FTE	70,911.6	3.6%
<b>Students By Class (b)</b>		
Freshman	19,044	0.0%
Sophomore	18,891	2.3%
Junior	13,425	4.6%
Senior	20,052	5.8%
<b>Students By Level</b>		
Undergraduate	71,412	3.1%
Graduate	12,690	6.3%
Professional	3,239	2.3%
Sp. Undergrad.	2,728	-6.1%
Sp. Graduate	3,595	6.4%
<b>Sex</b>		
Male	39,306	3.2%
Female	54,358	3.4%
<b>Ethnicity</b>		
Amer. Indian	241	-2.4%
Asian	2,218	3.0%
Black	6,254	2.4%
Hispanic	2,149	10.1%
White	77,183	3.1%
Foreign <sup>1</sup>	4,652	10.8%
Unknown	967	-13.7%
<b>Undergraduates By FT/PT (b)</b>		
FT-UG	51,198	4.0%
PT-UG	20,214	0.9%
<b>Residency</b>		
Resident	74,923	2.6%
Non-Resident	18,741	6.0%

(a) Compared with Second Semester, 2001-02

(b) Degree-seeking only

<sup>1</sup> As determined by citizenship status.

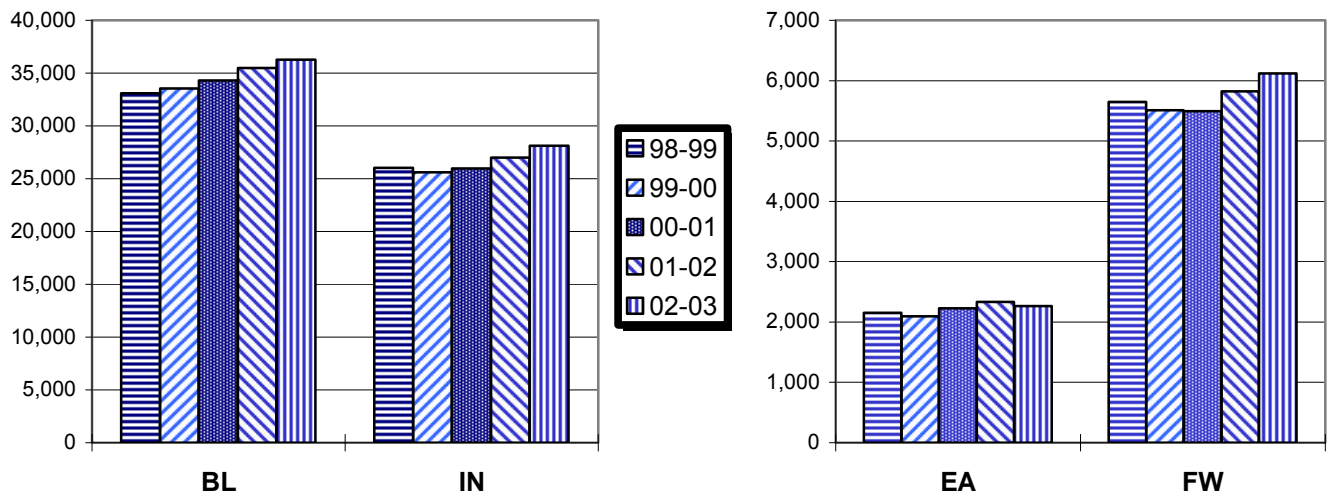
# Campus Enrollment Summary

## By Headcount, Credit Hours, and FTE

	Headcount		Credit Hours		FTE	
	#	% Change	#	% Change	#	% Change
<b>BL</b>	36,281	2.3%	475,964.5	1.9%	32,702.6	2.0%
<b>IN<sup>1</sup></b>	28,120	4.2%	290,053.0	5.0%	19,893.7	5.1%
<b>EA</b>	2,265	-2.9%	21,461.0	-0.4%	1,433.7	-0.5%
<b>FW</b>	6,121	5.2%	58,611.0	5.6%	3,959.4	5.6%
<b>KO</b>	2,576	3.2%	23,976.0	5.3%	1,616.1	5.3%
<b>NW</b>	4,930	12.5%	44,790.0	11.9%	3,039.5	11.9%
<b>SB</b>	7,047	2.0%	63,418.0	4.4%	4,346.4	4.4%
<b>SE</b>	6,324	1.1%	57,869.0	2.2%	3,920.2	2.2%

<sup>1</sup> IUPUI enrollments are unduplicated as of First Semester, 2000-01

## Historical Second Semester Enrollment



## By Undergraduate Enrollment Status

	Full-Time UG		Part-Time UG	
	#	% Change	#	% Change
<b>BL</b>	26,018	1.4%	1,912	3.6%
<b>IN<sup>1</sup></b>	11,784	7.2%	7,941	-1.9%
<b>EA</b>	1,107	2.2%	971	-5.7%
<b>FW</b>	3,096	5.6%	2,253	4.4%
<b>KO</b>	1,160	7.4%	1,040	1.1%
<b>NW</b>	2,126	10.3%	1,614	17.0%
<b>SB</b>	3,042	7.5%	2,309	-3.0%
<b>SE</b>	2,865	4.4%	2,174	2.6%

## By Residency

	Resident		Non-Resident	
	#	% Change	#	% Change
<b>BL</b>	21,986	1.0%	14,295	4.3%
<b>IN</b>	26,082	3.4%	2,038	15.3%
<b>EA</b>	2,084	-5.2%	181	36.1%
<b>FW</b>	5,825	5.6%	296	-2.6%
<b>KO</b>	2,550	3.0%	26	23.8%
<b>NW</b>	4,865	12.2%	65	38.3%
<b>SB</b>	6,614	1.8%	433	4.6%
<b>SE</b>	4,917	-1.1%	1,407	9.5%

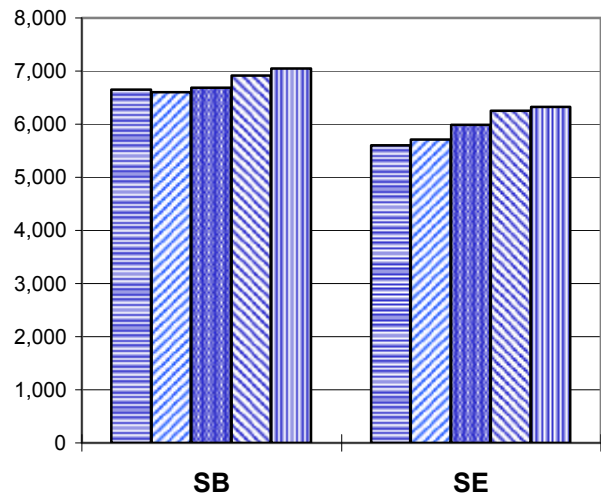
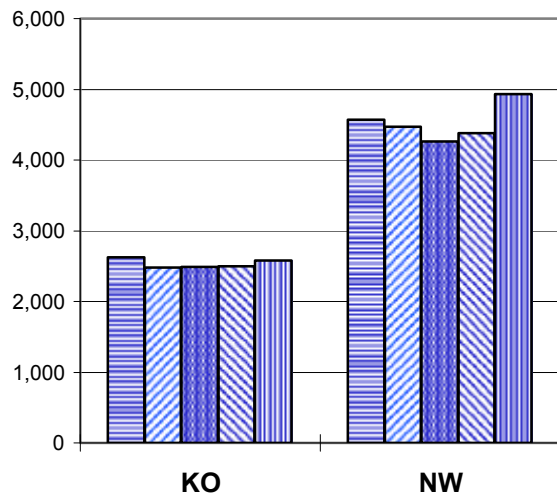
FW - IU Students Only

# Campus Enrollment Summary

## By Undergraduate Class Standing

	Freshman		Sophomore		Junior		Senior	
	#	% Change	#	% Change	#	% Change	#	% Change
<b>BL</b>	6,411	2.1%	6,577	-1.1%	6,145	1.7%	8,797	3.1%
<b>IN</b>	4,896	-4.7%	5,693	1.5%	3,474	8.7%	5,662	10.0%
<b>EA</b>	829	-7.4%	587	-2.2%	255	10.4%	407	5.2%
<b>FW</b>	2,009	6.1%	1,357	7.3%	780	4.7%	1,203	1.3%
<b>KO</b>	710	-7.6%	761	16.0%	309	9.2%	420	4.5%
<b>NW</b>	1,252	17.8%	1,178	10.5%	514	16.6%	796	8.2%
<b>SB</b>	1,547	-4.2%	1,500	6.5%	909	-1.5%	1,395	10.4%
<b>SE</b>	1,390	-0.4%	1,238	2.6%	1,039	7.2%	1,372	6.4%

## Historical Second Semester Enrollment



## Graduate and Professional Enrollment

	Graduate		Professional	
	#	% Change	#	% Change
<b>BL</b>	6,295	4.1%	908	3.8%
<b>IN</b>	3,676	15.8%	2,331	1.8%
<b>EA</b>	1	0.0%		
<b>FW</b>	541	5.3%		
<b>KO</b>	114	-5.8%		
<b>NW</b>	362	-7.2%		
<b>SB</b>	991	-0.1%		
<b>SE</b>	710	2.5%		

## By Sex

	Male		Female	
	#	% Change	#	% Change
<b>BL</b>	17,290	2.2%	18,991	2.3%
<b>IN</b>	11,855	3.7%	16,265	4.5%
<b>EA</b>	675	-3.0%	1,590	-2.8%
<b>FW</b>	2,314	5.5%	3,807	5.0%
<b>KO</b>	758	-0.3%	1,818	4.7%
<b>NW</b>	1,521	15.5%	3,409	11.2%
<b>SB</b>	2,539	3.1%	4,508	1.3%
<b>SE</b>	2,354	1.3%	3,970	0.9%

FW - IU Students Only

# Campus Enrollment Summary

## By Ethnicity

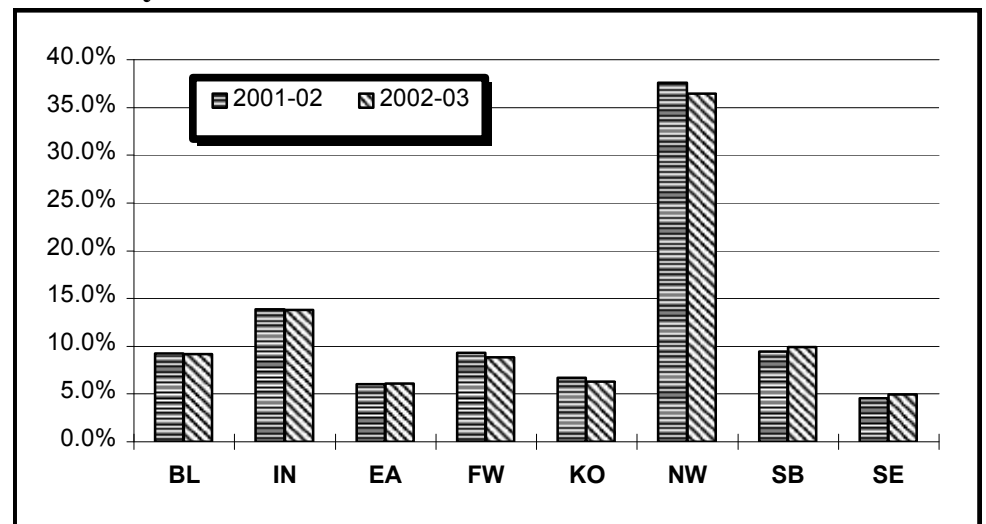
	American Indian			Asian-American			African-American			Hispanic			Other		
	#	% Change	% of Campus Total	#	% Change	% of Campus Total	#	% Change	% of Campus Total	#	% Change	% of Campus Total	#	% Change	% of Campus Total
<b>BL</b>	66	-18.5%	0.2%	1,139	2.3%	3.1%	1,357	-1.0%	3.7%	775	9.3%	2.1%	32,944	2.3%	90.8%
<b>IN</b>	75	10.3%	0.3%	780	8.6%	2.8%	2,546	0.8%	9.1%	475	8.4%	1.7%	24,244	4.3%	86.2%
<b>EA</b>	12	-7.7%	0.5%	13	-7.1%	0.6%	96	-6.8%	4.2%	17	54.5%	0.8%	2,127	-2.9%	93.9%
<b>FW</b>	16	-11.1%	0.3%	74	-19.6%	1.2%	309	3.7%	5.0%	141	4.4%	2.3%	5,581	5.7%	91.2%
<b>KO</b>	7	-22.2%	0.3%	26	-18.8%	1.0%	89	-1.1%	3.5%	40	11.1%	1.6%	2,414	3.6%	93.7%
<b>NW</b>	17	21.4%	0.3%	52	-3.7%	1.1%	1,239	7.4%	25.1%	489	14.8%	9.9%	3,133	14.5%	63.5%
<b>SB</b>	34	25.9%	0.5%	90	0.0%	1.3%	404	7.2%	5.7%	172	7.5%	2.4%	6,347	1.5%	90.1%
<b>SE</b>	14	-17.6%	0.2%	44	10.0%	0.7%	214	12.6%	3.4%	40	11.1%	0.6%	6,012	0.6%	95.1%

## Matriculants By Campus

	Heads		Hours	
	#	% Change	#	% Change
<b>BL</b>	628	-1.4%	6,371.5	-4.0%
<b>IN</b>	2,015	-0.5%	17,169.5	1.1%
<b>EA</b>	246	-22.4%	1,988.0	-20.2%
<b>FW</b>	617	-1.0%	5,643.0	1.7%
<b>KO</b>	271	6.3%	2,086.0	20.4%
<b>NW</b>	589	28.9%	4,749.0	33.0%
<b>SB</b>	569	0.7%	4,644.0	3.3%
<b>SE</b>	486	-8.6%	3,739.5	-12.4%

FW - IU Students Only

## Minority\* Enrollment as Percent of Total



\* Am. Indian, Asian-Amer., African-Amer., & Hispanic

## Source Information

Todd Schmitz, Dir., Reporting & Research  
 Lisa Newlin-Blackwell, Reporting Analyst  
 University Budget Office Poplars 018 : (812) 855-9893 <http://www.indiana.edu/~urr>

Produced: 1/28/03