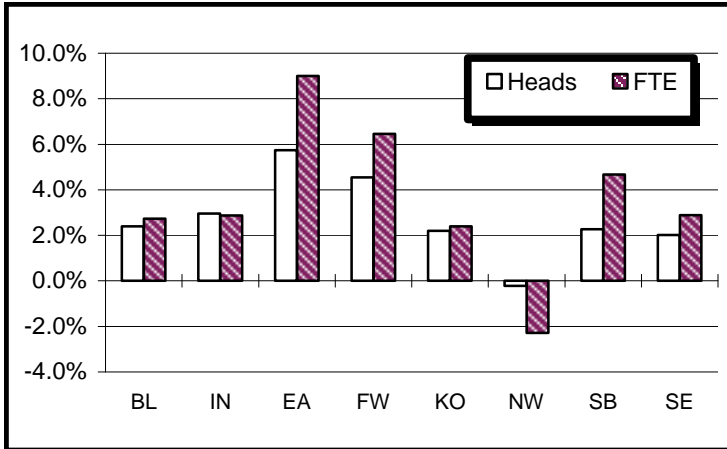
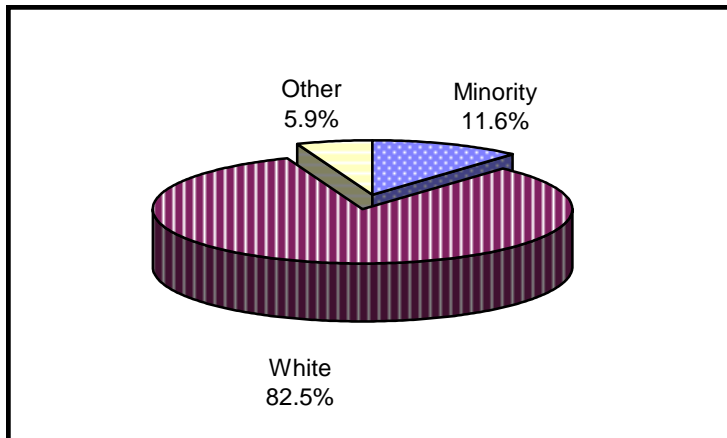




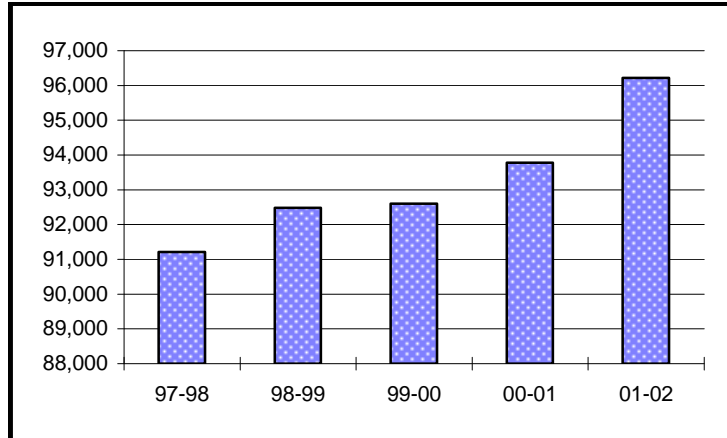
Enrollment Percent Change



Enrollment By Ethnicity



Historical First Semester Enrollment



University Enrollment Summary

	#	% Change(a)
Headcount	96,219	2.6%
Credit Hours	1,060,729.5	3.0%
FTE	72,565.1	3.0%
Students By Class (b)		
Freshman	23,768	1.0%
Sophomore	19,088	4.4%
Junior	12,987	1.9%
Senior	17,540	4.8%
Students By Level		
Undergraduate	73,383	2.9%
Graduate	12,286	4.3%
Professional	3,254	-0.9%
Sp. Undergrad.	3,536	-6.9%
Sp. Graduate	3,760	3.8%
Sex		
Male	40,388	2.5%
Female	55,831	2.7%
Ethnicity		
Amer. Indian	259	1.2%
Asian-Amer.	2,265	1.6%
African-Amer.	6,553	3.9%
Hispanic	2,073	5.1%
White	79,364	1.8%
Foreign	4,349	9.2%
Unknown	1,356	30.9%
Undergraduates By FT/PT		
FT-UG	53,288	3.4%
PT-UG	20,095	1.7%
Residency		
Resident	77,593	1.6%
Non-Resident	18,626	7.0%

(a) Compared with First Semester, 2000-01

(b) Degree-seeking only

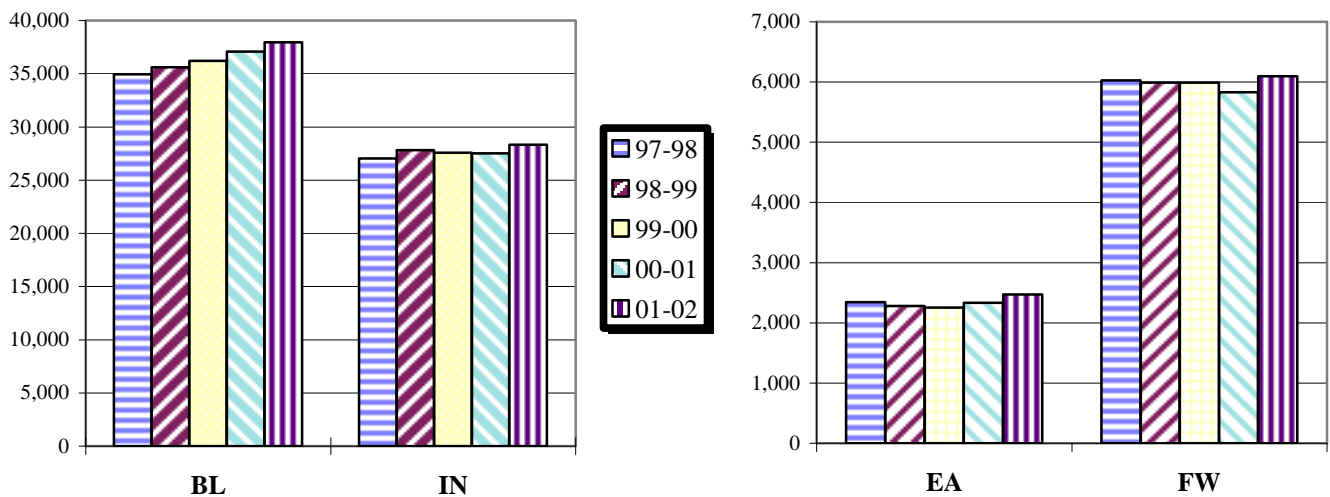
Campus Enrollment Summary

By Headcount, Credit Hours, and FTE

	Headcount		Credit Hours		FTE	
	#	% Change	#	% Change	#	% Change
BL	37,963	2.4%	503,460.5	2.7%	34,575.7	2.7%
IN¹	28,339	3.0%	284,406.0	2.8%	19,485.3	2.9%
EA	2,469	5.7%	22,378.0	9.0%	1,495.5	9.0%
FW	6,094	4.5%	59,115.0	6.3%	3,999.1	6.5%
KO	2,741	2.2%	24,600.0	2.8%	1,660.5	2.4%
NW	4,639	-0.2%	41,764.0	-2.5%	2,838.6	-2.3%
SB	7,417	2.3%	65,894.0	4.7%	4,507.6	4.7%
SE	6,557	2.0%	59,112.0	2.7%	4,002.9	2.9%

¹Indianapolis headcounts are unduplicated as of First Semester, 2001-02.

Historical First Semester Enrollment



By Undergraduate Enrollment Status

	Full-Time UG		Part-Time UG	
	#	% Change	#	% Change
BL	27,744	3.1%	1,381	0.6%
IN	11,903	2.5%	8,397	2.1%
EA	1,116	12.7%	1,049	3.3%
FW	3,204	5.8%	2,057	-1.2%
KO	1,167	6.3%	1,108	0.2%
NW	2,027	-6.1%	1,458	-1.6%
SB	3,127	10.5%	2,478	7.5%
SE	3,000	3.3%	2,167	0.2%

By Residency

	Resident		Non-Resident	
	#	% Change	#	% Change
BL	23,434	1.0%	14,529	4.7%
IN	26,491	2.0%	1,848	18.6%
EA	2,320	3.1%	149	77.4%
FW	5,779	5.3%	315	-8.2%
KO	2,718	2.2%	23	4.5%
NW	4,582	-0.5%	57	26.7%
SB	6,976	2.0%	441	7.6%
SE	5,293	-1.3%	1,264	18.9%

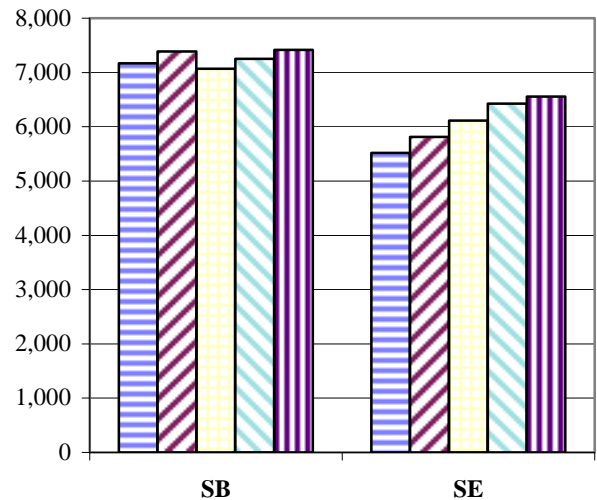
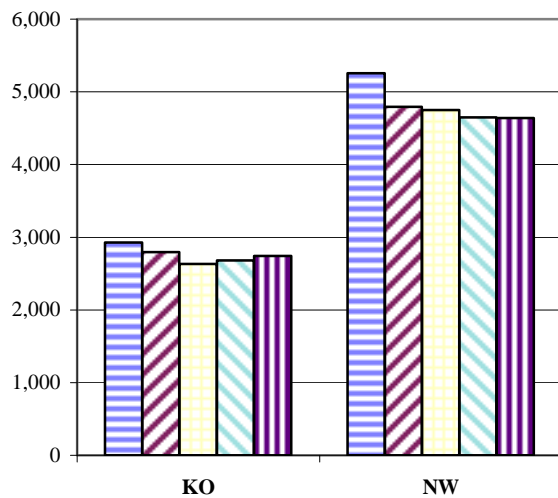
FW - IU Students Only

Campus Enrollment Summary

By Undergraduate Class Standing

	Freshman		Sophomore		Junior		Senior	
	#	% Change	#	% Change	#	% Change	#	% Change
BL	7,802	-2.4%	7,453	8.9%	6,171	-2.9%	7,699	8.5%
IN	6,486	-3.7%	5,641	4.2%	3,216	7.1%	4,957	5.6%
EA	997	9.8%	587	14.2%	203	-11.4%	378	6.8%
FW	2,438	22.0%	1,013	-20.7%	777	9.9%	1,033	-8.3%
KO	978	4.3%	631	4.1%	288	5.1%	378	-2.1%
NW	1,268	-2.5%	1,060	-6.4%	468	8.3%	689	-10.9%
SB	2,034	12.8%	1,412	8.5%	924	11.6%	1,235	2.7%
SE	1,765	-4.5%	1,291	8.1%	940	3.1%	1,171	5.5%

Historical First Semester Enrollment



Graduate and Professional Enrollment

	Graduate		Professional	
	#	% Change	#	% Change
BL	6,446	2.7%	898	-1.4%
IN	3,071	8.6%	2,356	-0.8%
EA	1	n/a		
FW	572	6.9%		
KO	130	-8.5%		
NW	391	5.1%		
SB	955	-1.7%		
SE	720	11.1%		

FW - IU Students Only

By Sex

	Male		Female	
	#	% Change	#	% Change
BL	18,026	3.1%	19,937	1.8%
IN	12,010	2.5%	16,329	3.3%
EA	724	1.0%	1,745	7.8%
FW	2,253	2.5%	3,841	5.8%
KO	851	-1.8%	1,890	4.1%
NW	1,397	-1.0%	3,242	0.1%
SB	2,689	3.9%	4,728	1.4%
SE	2,438	0.7%	4,119	2.8%

Campus Enrollment Summary

By Ethnicity

	American Indian			Asian-American			African-American			Hispanic			Other		
	#	% Change	% of Campus Total	#	% Change	% of Campus Total	#	% Change	% of Campus Total	#	% Change	% of Campus Total	#	% Change	% of Campus Total
BL	86	-9.5%	0.2%	1,178	-1.4%	3.1%	1,505	5.0%	4.0%	759	1.7%	2.0%	34,435	2.3%	90.7%
IN	72	0.0%	0.3%	747	3.5%	2.6%	2,681	3.2%	9.5%	453	4.6%	1.6%	24,386	-0.2%	86.1%
EA	12	50.0%	0.5%	12	9.1%	0.5%	99	-2.0%	4.0%	12	-7.7%	0.5%	2,334	3.4%	94.5%
FW	17	6.3%	0.3%	101	-1.0%	1.7%	298	13.3%	4.9%	130	4.8%	2.1%	5,548	-2.7%	91.0%
KO	10	-16.7%	0.4%	37	12.1%	1.3%	96	3.2%	3.5%	47	34.3%	1.7%	2,551	0.6%	93.1%
NW	15	15.4%	0.3%	54	22.7%	1.2%	1,230	0.4%	26.5%	459	8.8%	9.9%	2,881	-3.4%	62.1%
SB	35	29.6%	0.5%	98	8.9%	1.3%	456	13.4%	6.1%	173	14.6%	2.3%	6,655	2.1%	89.7%
SE	12	-7.7%	0.2%	38	15.2%	0.6%	188	-3.1%	2.9%	40	-18.4%	0.6%	6,279	5.2%	95.8%

Matriculants By Campus

	Heads		Hours	
	#	% Change	#	% Change
BL	8,454	-3.1%	116,126.5	-2.1%
IN	5,668	0.2%	59,042.0	-1.9%
EA	735	10.2%	5,983.0	17.6%
FW	1,411	1.8%	15,028.0	2.8%
KO	780	4.3%	7,002.0	3.7%
NW	1,096	4.3%	9,923.0	-1.1%
SB	1,787	-1.4%	16,160.0	-0.3%
SE	1,461	-4.8%	14,040.5	-2.4%

FW - IU Students Only

Undergraduate Beginners By Campus¹

	Heads		Hours	
	#	% Change	#	% Change
BL	6,815	-1.7%	102,775.5	-1.3%
IN	2,978	-6.9%	35,249.5	-7.8%
EA	466	12.3%	4,591.0	9.4%
FW	936	0.1%	11,294.0	4.4%
KO	515	4.0%	5,560.0	3.1%
NW	657	-0.9%	7,596.0	-1.9%
SB	1,029	20.2%	11,440.0	15.9%
SE	915	-1.5%	10,376.0	-0.8%

¹ Defined by entry status and semester for retention/graduation reporting.

Source Information

Todd Schmitz, Dir., Reporting & Research
 Lisa Newlin-Blackwell, Management Reporting Analyst
 Poplars 018 : (812) 855 9893

Produced: 9/7/01

This report, and other official IU reports are available at <http://www.indiana.edu/~urr/>