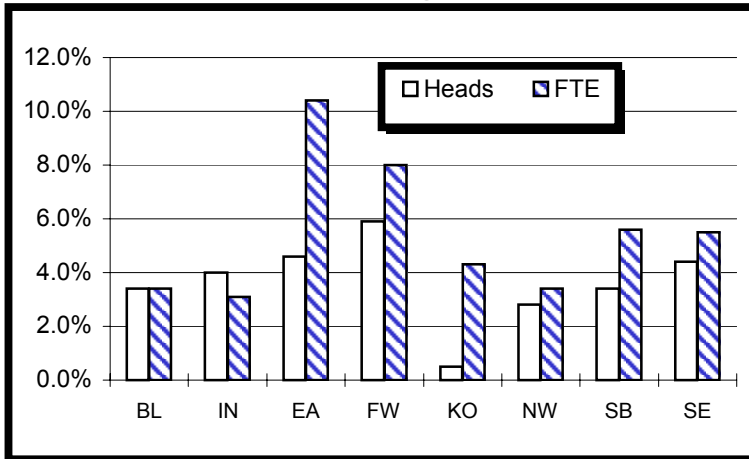
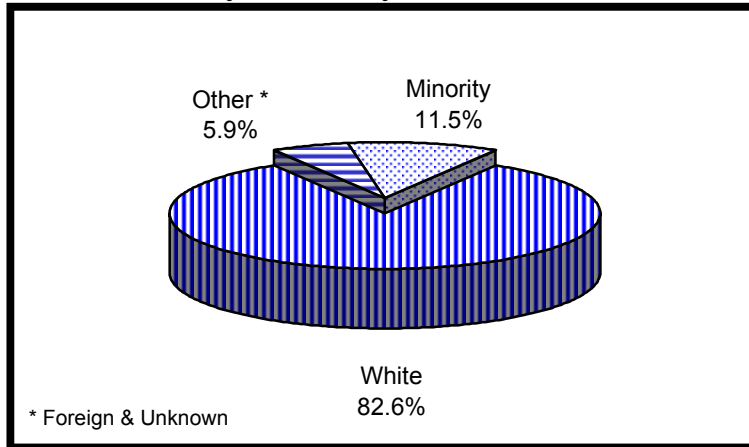




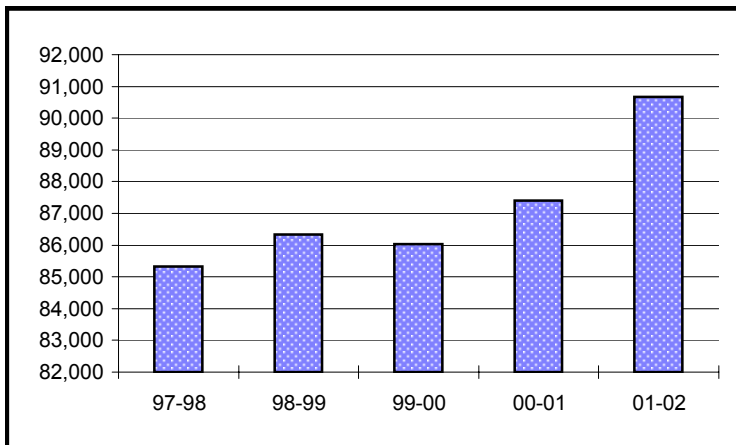
Enrollment Percent Change



Enrollment By Ethnicity



Historical Second Semester Enrollment



University Enrollment Summary

	#	% Change (a)
Headcount	90,670	3.7%
Credit Hours	1,000,493.0	4.0%
FTE	68,426.2	4.0%
<b>Students By Class (b)</b>		
Freshman	19,047	3.0%
Sophomore	18,461	4.8%
Junior	12,830	9.2%
Senior	18,950	3.2%
<b>Students By Level</b>		
Undergraduate	69,288	4.6%
Graduate	11,933	4.1%
Professional	3,165	-0.9%
Sp. Undergrad.	2,905	-6.7%
Sp. Graduate	3,379	-1.2%
<b>Sex</b>		
Male	38,099	3.7%
Female	52,571	3.8%
<b>Ethnicity</b>		
Amer. Indian	247	4.7%
Asian	2,153	2.8%
Black	6,110	2.8%
Hispanic	1,951	7.1%
White	74,889	3.2%
Foreign	4,200	8.8%
Unknown	1,120	26.6%
<b>Undergraduates By FT/PT (b)</b>		
FT-UG	49,251	5.1%
PT-UG	20,037	3.6%
<b>Residency</b>		
Resident	72,997	2.8%
Non-Resident	17,673	7.7%

(a) Compared with Second Semester, 2000-01

(b) Degree-seeking only

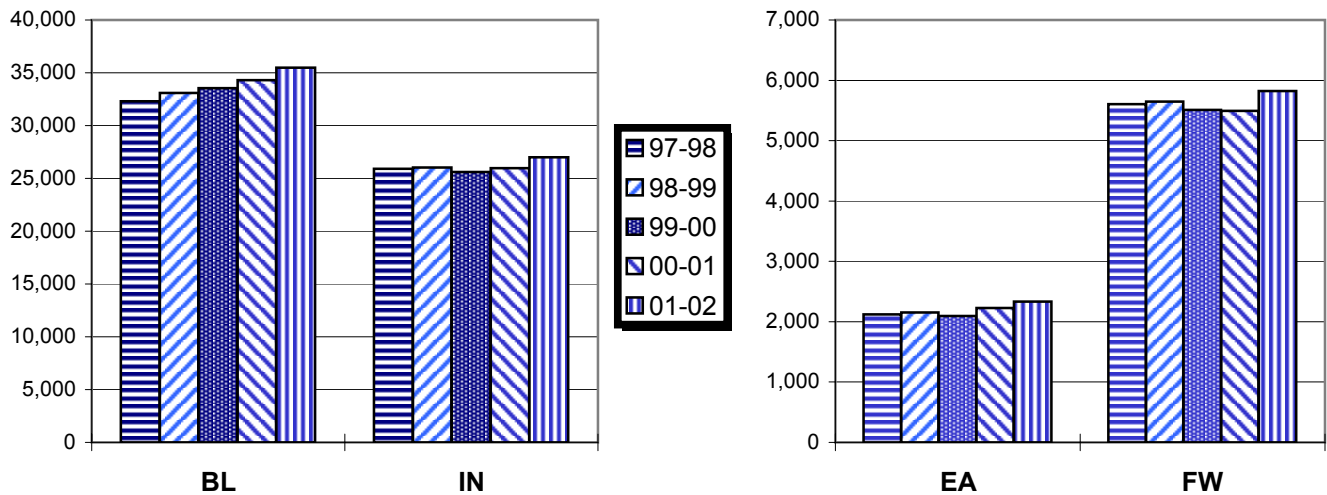
# Campus Enrollment Summary

## By Headcount, Credit Hours, and FTE

	Headcount		Credit Hours		FTE	
	#	% Change	#	% Change	#	% Change
<b>BL</b>	35,474	3.4%	467,072.5	3.5%	32,064.8	3.4%
<b>IN<sup>1</sup></b>	26,995	4.0%	276,215.0	2.9%	18,920.4	3.1%
<b>EA</b>	2,332	4.6%	21,553.0	10.4%	1,440.9	10.4%
<b>FW</b>	5,821	5.9%	55,509.5	8.1%	3,749.7	8.0%
<b>KO</b>	2,497	0.5%	22,768.0	4.7%	1,535.1	4.3%
<b>NW</b>	4,384	2.8%	40,012.0	3.4%	2,717.4	3.4%
<b>SB</b>	6,910	3.4%	60,745.0	5.8%	4,161.6	5.6%
<b>SE</b>	6,257	4.4%	56,618.0	5.4%	3,836.4	5.5%

<sup>1</sup> IUPUI enrollments are unduplicated as of First Semester, 2000-01

## Historical Second Semester Enrollment



## By Undergraduate Enrollment Status

	Full-Time UG		Part-Time UG	
	#	% Change	#	% Change
<b>BL</b>	25,662	3.8%	1,846	14.7%
<b>IN<sup>1</sup></b>	10,994	4.4%	8,097	2.2%
<b>EA</b>	1,083	17.5%	1,030	2.7%
<b>FW</b>	2,933	9.9%	2,158	3.5%
<b>KO</b>	1,080	9.9%	1,029	-1.7%
<b>NW</b>	1,927	3.2%	1,379	-1.9%
<b>SB</b>	2,829	9.0%	2,380	5.5%
<b>SE</b>	2,743	5.7%	2,118	5.0%

FW - IU Students Only

## By Residency

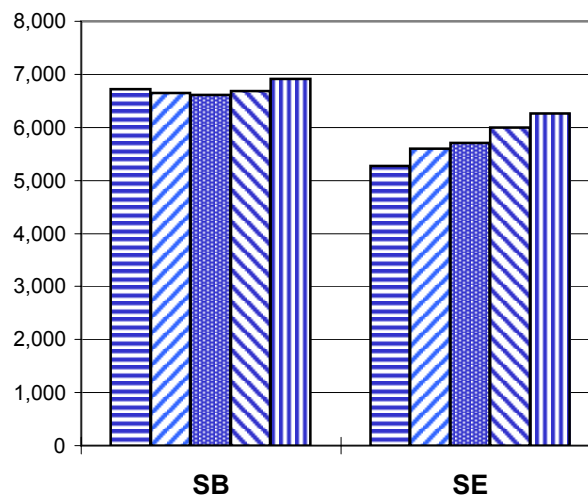
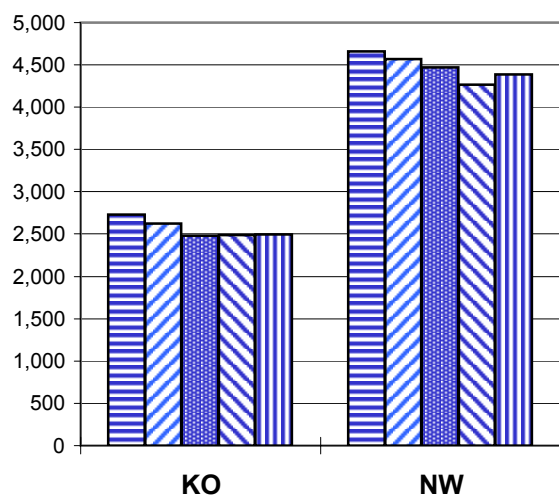
	Resident		Non-Resident	
	#	% Change	#	% Change
<b>BL</b>	21,773	1.9%	13,701	5.9%
<b>IN</b>	25,227	3.3%	1,768	15.1%
<b>EA</b>	2,199	2.6%	133	56.5%
<b>FW</b>	5,517	6.2%	304	1.3%
<b>KO</b>	2,476	0.6%	21	-12.5%
<b>NW</b>	4,337	2.9%	47	-4.1%
<b>SB</b>	6,496	3.2%	414	6.7%
<b>SE</b>	4,972	1.5%	1,285	17.6%

# Campus Enrollment Summary

## By Undergraduate Class Standing

	Freshman		Sophomore		Junior		Senior	
	#	% Change	#	% Change	#	% Change	#	% Change
<b>BL</b>	6,279	0.0%	6,650	5.0%	6,043	9.8%	8,536	3.9%
<b>IN</b>	5,139	-3.3%	5,609	5.9%	3,195	11.1%	5,148	3.8%
<b>EA</b>	895	16.8%	600	10.9%	231	8.5%	387	-4.4%
<b>FW</b>	1,894	22.8%	1,265	-3.7%	745	5.1%	1,187	-0.4%
<b>KO</b>	768	2.8%	656	9.2%	283	-2.4%	402	2.6%
<b>NW</b>	1,063	6.2%	1,066	-4.1%	441	5.8%	736	-1.2%
<b>SB</b>	1,614	9.3%	1,408	7.5%	923	9.8%	1,264	3.3%
<b>SE</b>	1,395	1.1%	1,207	8.3%	969	8.1%	1,290	5.5%

## Historical Second Semester Enrollment



## Graduate and Professional Enrollment

	Graduate		Professional	
	#	% Change	#	% Change
<b>BL</b>	6,048	1.9%	875	-0.5%
<b>IN</b>	3,174	11.1%	2,290	-1.1%
<b>EA</b>	1	n/a		
<b>FW</b>	514	-3.9%		
<b>KO</b>	121	-4.7%		
<b>NW</b>	390	4.8%		
<b>SB</b>	992	5.9%		
<b>SE</b>	693	-0.6%		

## By Sex

	Male		Female	
	#	% Change	#	% Change
<b>BL</b>	16,917	4.2%	18,557	2.7%
<b>IN</b>	11,429	3.4%	15,566	4.4%
<b>EA</b>	696	5.9%	1,636	4.1%
<b>FW</b>	2,194	7.4%	3,627	5.0%
<b>KO</b>	760	-5.8%	1,737	3.5%
<b>NW</b>	1,317	3.4%	3,067	2.6%
<b>SB</b>	2,462	2.4%	4,448	4.0%
<b>SE</b>	2,324	1.7%	3,933	6.2%

FW - IU Students Only

# Campus Enrollment Summary

## By Ethnicity

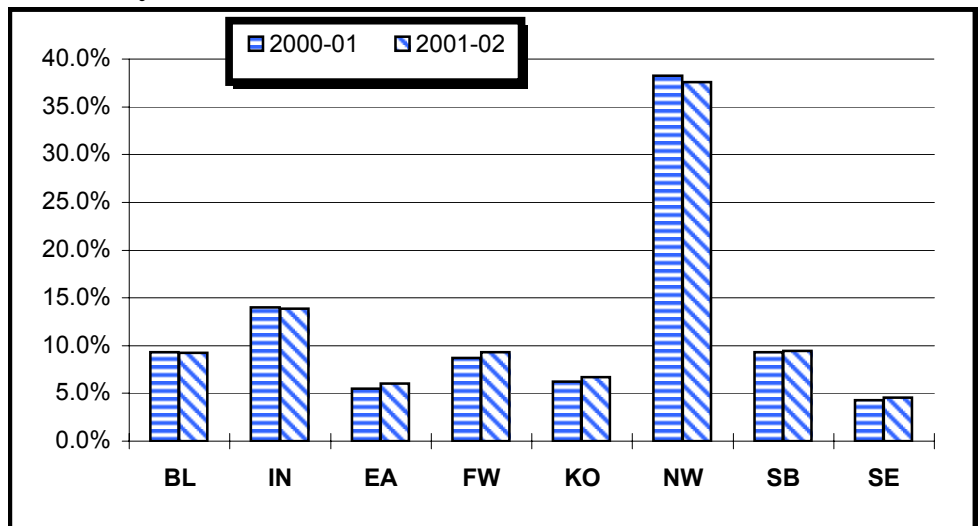
	American Indian			Asian-American			African-American			Hispanic			Other		
	#	% Change	% of Campus Total	#	% Change	% of Campus Total	#	% Change	% of Campus Total	#	% Change	% of Campus Total	#	% Change	% of Campus Total
<b>BL</b>	81	-12.9%	0.2%	1,113	-0.4%	3.1%	1,371	4.6%	3.9%	709	4.9%	2.0%	32,200	3.5%	90.8%
<b>IN</b>	68	3.0%	0.3%	718	2.3%	2.7%	2,527	2.6%	9.4%	438	10.3%	1.6%	23,244	4.1%	86.1%
<b>EA</b>	13	44.4%	0.6%	14	7.7%	0.6%	103	17.0%	4.4%	11	-15.4%	0.5%	2,191	4.0%	94.0%
<b>FW</b>	18	38.5%	0.3%	92	16.5%	1.6%	298	13.7%	5.1%	135	9.8%	2.3%	5,278	5.2%	90.7%
<b>KO</b>	9	0.0%	0.4%	32	18.5%	1.3%	90	13.9%	3.6%	36	-10.0%	1.4%	2,330	0.0%	93.3%
<b>NW</b>	14	75.0%	0.3%	54	17.4%	1.2%	1,154	-3.4%	26.3%	426	10.9%	9.7%	2,736	4.0%	62.4%
<b>SB</b>	27	-6.9%	0.4%	90	12.5%	1.3%	377	4.1%	5.5%	160	4.6%	2.3%	6,256	3.3%	90.5%
<b>SE</b>	17	88.9%	0.3%	40	33.3%	0.6%	190	3.8%	3.0%	36	0.0%	0.6%	5,974	4.2%	95.5%

## Matriculants By Campus

	Heads		Hours	
	#	% Change	#	% Change
<b>BL</b>	637	-3.0%	6,637.5	8.5%
<b>IN</b>	2,026	-1.2%	16,981.5	0.2%
<b>EA</b>	317	16.5%	2,490.0	25.6%
<b>FW</b>	623	17.3%	5,550.5	21.1%
<b>KO</b>	255	-1.2%	1,733.0	5.3%
<b>NW</b>	457	15.7%	3,572.0	24.4%
<b>SB</b>	565	0.2%	4,496.0	-3.4%
<b>SE</b>	532	3.9%	4,268.5	7.5%

FW - IU Students Only

## Minority\* Enrollment as Percent of Total



\* Am. Indian, Asian-Amer., African-Amer., & Hispanic

## Source Information

Todd Schmitz, Dir., Reporting & Research  
 Lisa Newlin-Blackwell, Reporting Analyst

University Budget Office, Poplars 018 : (812) 855-9893 <http://www.indiana.edu/~urr>

Produced: 1/30/02