

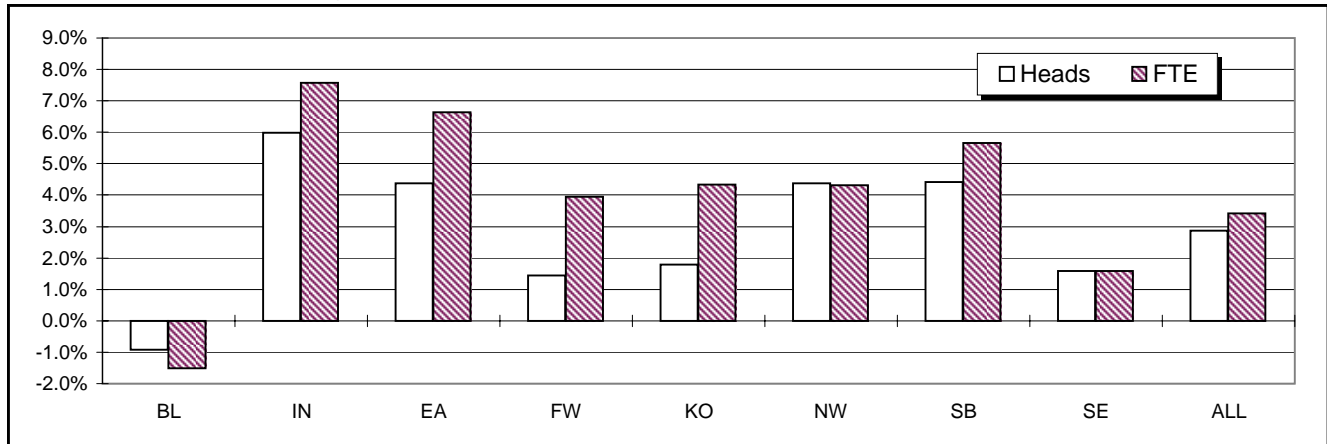


Campus Enrollment Summary - Combined Summer Sessions, 2003

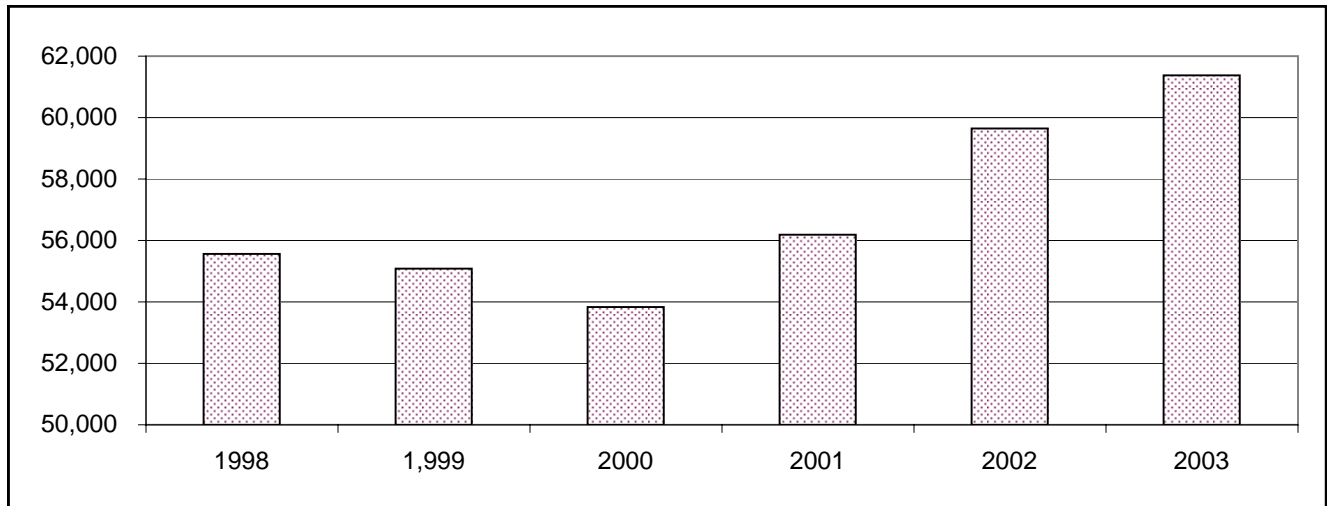
	Headcount		Credit Hours		FTE	
	#	% Change	#	% Change	#	% Change
<b>BL</b>	17,348	-0.9%	79,816.0	-1.6%	5,599.9	-1.5%
<b>IN</b>	21,734	6.0%	87,141.0	7.1%	6,192.8	7.6%
<b>EA</b>	1,576	4.4%	6,520.0	6.7%	438.9	6.6%
<b>FW</b>	3,923	1.4%	15,055.0	4.0%	1,055.8	4.0%
<b>KO</b>	1,710	1.8%	6,704.0	4.3%	460.5	4.3%
<b>NW</b>	4,250	4.4%	17,695.0	4.3%	1,233.3	4.3%
<b>SB</b>	5,757	4.4%	22,403.0	6.1%	1,593.2	5.6%
<b>SE</b>	5,069	1.6%	20,125.0	1.8%	1,420.1	1.6%
<b>ALL</b>	61,367	2.9%	255,459.0	3.3%	17,994.5	3.4%

FW - IU Students Only

Enrollment Percent Change



Historical Combined Summer Enrollment



# Campus Enrollment Summary

## By Undergraduate Class Standing

	Freshman		Sophomore		Junior		Senior	
	#	% Change	#	% Change	#	% Change	#	% Change
<b>BL</b>	834	-14.5%	1,355	-3.7%	3,181	-7.7%	6,117	4.6%
<b>IN</b>	1,409	-2.4%	2,987	-6.2%	2,492	5.0%	5,020	11.6%
<b>EA</b>	407	-5.3%	404	12.2%	230	9.5%	356	13.4%
<b>FW</b>	461	-4.4%	777	2.4%	583	1.6%	1,124	7.7%
<b>KO</b>	285	0.4%	441	3.8%	257	7.1%	365	0.6%
<b>NW</b>	582	4.1%	1,006	3.6%	475	14.5%	854	0.9%
<b>SB</b>	640	2.9%	1,083	4.6%	796	21.9%	1,203	6.1%
<b>SE</b>	489	0.2%	834	11.5%	785	-4.6%	1,387	7.7%
<b>ALL</b>	5,107	-3.3%	8,887	0.0%	8,799	0.7%	16,426	7.1%

## Graduate & Professional Enrollment

## By Undergrad. Enrollment Status

	Graduate		Professional		Full-Time UG		Part-Time UG	
	#	% Change	#	% Change	#	% Change	#	% Change
<b>BL</b>	3,573	3.2%	612	-7.8%	6,279	-2.9%	5,208	0.0%
<b>IN</b>	4,034	19.9%	2,151	7.2%	3,421	11.9%	8,487	0.5%
<b>EA</b>	1	-75.0%			463	15.8%	934	2.2%
<b>FW</b>	587	-0.2%			760	17.1%	2,185	-1.1%
<b>KO</b>	102	-6.4%			328	10.1%	1,020	0.6%
<b>NW</b>	490	3.8%			957	3.8%	1,960	4.9%
<b>SB</b>	1,190	-7.1%			951	5.9%	2,771	8.8%
<b>SE</b>	1,004	5.9%			949	6.9%	2,546	3.5%
<b>ALL</b>	10,981	7.4%	2,763	3.5%	14,108	3.9%	25,111	1.8%

## By Gender

## By Residency

	Male		Female		Resident		Non-Resident	
	#	% Change	#	% Change	#	% Change	#	% Change
<b>BL</b>	8,346	-0.7%	9,002	-1.1%	10,668	-3.5%	6,680	3.4%
<b>IN</b>	9,060	8.7%	12,674	4.1%	19,790	5.2%	1,944	14.7%
<b>EA</b>	400	5.3%	1,176	4.1%	1,452	3.5%	124	15.9%
<b>FW</b>	1,344	4.6%	2,579	-0.1%	3,745	2.0%	178	-9.2%
<b>KO</b>	433	3.1%	1,277	1.3%	1,699	1.7%	11	10.0%
<b>NW</b>	1,167	6.2%	3,083	3.7%	4,183	3.9%	67	45.7%
<b>SB</b>	1,852	9.3%	3,905	2.2%	5,446	4.0%	311	13.1%
<b>SE</b>	1,686	4.5%	3,383	0.2%	3,750	-2.2%	1,319	14.2%
<b>ALL</b>	24,288	4.5%	37,079	1.8%	50,733	2.1%	10,634	6.9%

FW - IU Students Only

## Source Information

Todd Schmitz, Dir., Reporting & Research Services  
 Lisa Newlin-Blackwell, Management Reporting Analyst  
 Poplars 018 (812)855-9893

<http://www.indiana.edu/~urri/>

Produced 8/4/03