

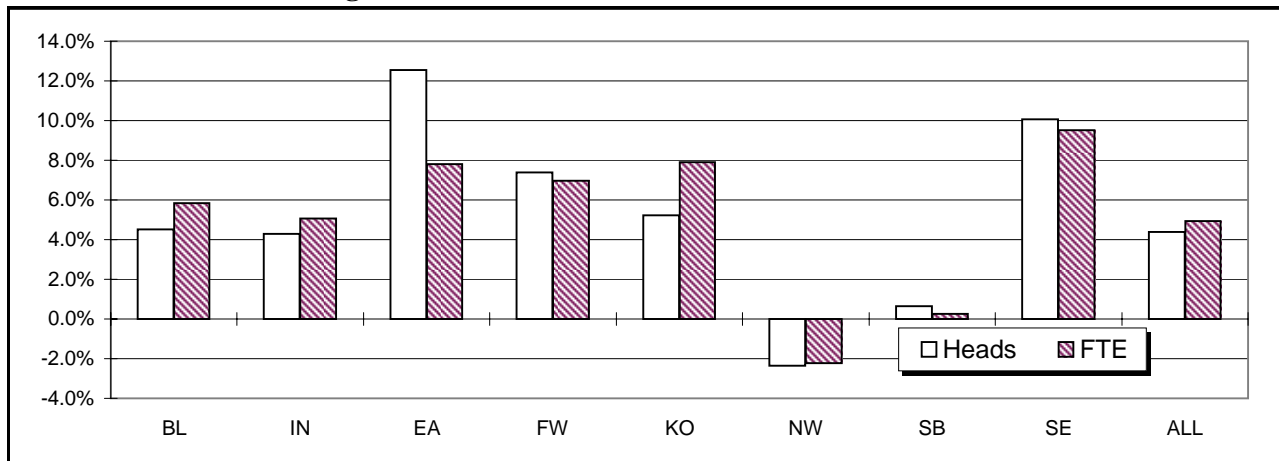


Campus Enrollment Summary - Combined Summer Sessions, 2001

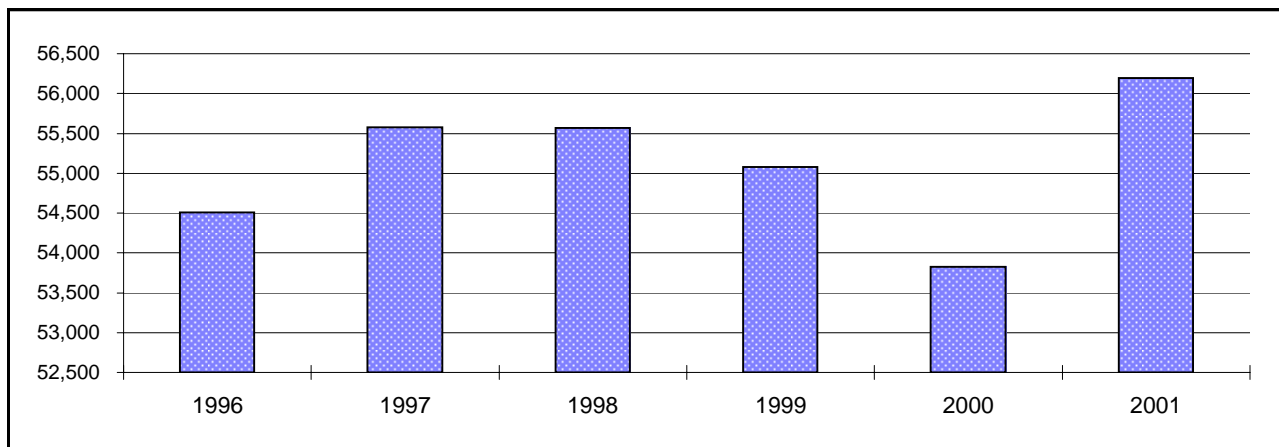
	Headcount		Credit Hours		FTE	
	#	% Change	#	% Change	#	% Change
BL	17,043	4.5%	77,660.5	6.2%	5,438.8	5.9%
IN	19,063	4.3%	75,311.0	4.8%	5,303.1	5.1%
EA	1,407	12.6%	5,359.0	7.9%	360.7	7.8%
FW	3,451	7.4%	12,865.0	7.5%	903.5	7.0%
KO	1,692	5.2%	6,465.0	8.8%	446.1	7.9%
NW	3,673	-2.4%	15,032.0	-2.9%	1,054.6	-2.2%
SB	5,215	0.6%	19,965.0	0.0%	1,428.1	0.3%
SE	4,647	10.1%	18,187.0	9.8%	1,279.5	9.5%
ALL	56,191	4.4%	230,844.5	5.0%	16,214.4	4.9%

FW - IU Students Only

Enrollment Percent Change



Historical Combined Summer Enrollment



Campus Enrollment Summary

By Undergraduate Class Standing

	Freshman		Sophomore		Junior		Senior	
	#	% Change	#	% Change	#	% Change	#	% Change
BL	815	2.3%	1,370	22.6%	2,947	-2.9%	5,684	5.8%
IN	1,453	4.7%	2,974	7.6%	2,061	1.1%	4,214	3.2%
EA	371	24.5%	368	22.3%	170	8.3%	324	8.0%
FW	414	5.9%	670	15.5%	490	14.2%	979	9.1%
KO	265	17.3%	437	21.4%	232	-2.1%	364	8.0%
NW	432	7.5%	817	-9.1%	426	1.2%	775	-12.9%
SB	584	17.7%	870	2.8%	624	3.0%	1,106	-7.0%
SE	447	4.0%	759	19.9%	726	17.7%	1,263	13.8%
ALL	4,781	8.0%	8,265	10.2%	7,676	1.8%	14,709	3.7%

Graduate & Professional Enrollment

By Undergrad. Enrollment Status

	Graduate		Professional		Full-Time UG		Part-Time UG	
	#	% Change	#	% Change	#	% Change	#	% Change
BL	3,568	4.4%	767	14.3%	6,230	12.8%	4,586	-4.5%
IN	2,708	8.9%	2,057	1.8%	2,666	0.8%	8,036	5.3%
EA	2	0.0%			305	1.3%	928	22.9%
FW	562	-5.2%			593	10.8%	1,960	11.2%
KO	123	-21.2%			293	36.3%	1,005	6.3%
NW	449	-14.1%			760	-7.0%	1,690	-5.8%
SB	1,181	7.2%			778	-0.3%	2,406	2.1%
SE	891	4.8%			856	22.3%	2,339	11.9%
ALL	9,484	3.9%	2,692	1.6%	12,481	8.4%	22,950	3.7%

By Gender

By Residency

	Male		Female		Resident		Non-Resident	
	#	% Change	#	% Change	#	% Change	#	% Change
BL	8,049	5.2%	8,994	3.9%	10,594	4.8%	6,449	4.1%
IN	7,753	4.8%	11,310	3.9%	17,876	3.8%	1,187	11.4%
EA	362	8.4%	1,045	14.1%	1,365	12.8%	42	5.0%
FW	1,129	6.8%	2,322	7.6%	3,248	7.7%	203	2.5%
KO	443	3.3%	1,249	5.9%	1,686	7.3%	6	-83.8%
NW	1,008	-9.1%	2,665	0.5%	3,637	-1.8%	36	-37.9%
SB	1,646	-0.3%	3,569	1.1%	4,938	0.7%	277	0.4%
SE	1,660	15.6%	2,987	7.2%	3,622	5.0%	1,025	32.8%
ALL	22,050	4.7%	34,141	4.2%	46,966	4.0%	9,225	6.7%

FW - IU Students Only

Source Information

Todd Schmitz, Dir., Reporting & Research Services
 Lisa Newlin-Blackwell, Management Reporting Analyst
 (812) 855-9893
 Poplars 018 <http://www.indiana.edu/~urr>

Produced 7/31/01