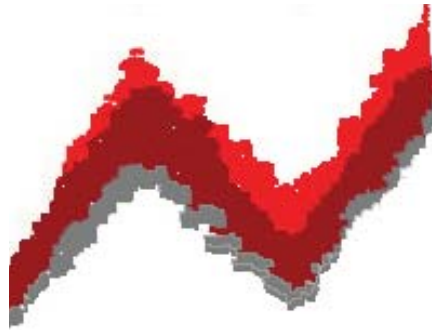
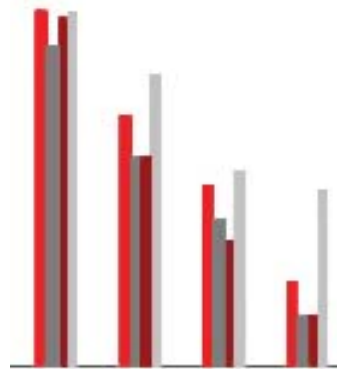
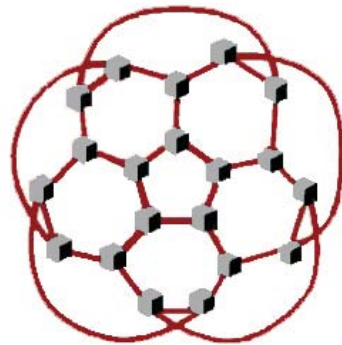


OFFICE OF THE REGISTRAR ENROLLMENT REPORT UPDATE

A SUMMARY OF SPRING 2007



This report is also available with color graphics at: <http://www.indiana.edu/~registra/enrollreports/>

INDIANA UNIVERSITY - BLOOMINGTON
DATA MANAGEMENT & ADMINISTRATION 812-855-6235

PREFACE

This report is a companion report to the Fall 2006 *Enrollment Report* issued November 13, 2006. Its primary emphasis is on Spring Term 2007 enrollment. Historical data for selected years are also presented.

Most of the information contained in the *Enrollment Report Update* results from the analysis of data collected from detailed enrollment statistical reports. Most Spring Term data reflect the end of the first week of classes, January 14, which is the official enrollment reporting cut-off date. Data in this report focus on campus enrollment management and operations to support campus planning activities, and therefore may not agree with official enrollment data that focus on prescribed formulas. Official enrollment data are released by University Reporting and Research in compliance with national and state standards set by external agencies.

Data definitions and methods of calculations are explained throughout this report. Our selections of analytical approaches are not the only ones possible. The collective use of simple formulas to meet all the data needs at a complex institution is not attainable. If you encounter data other than what appears in this publication, you should probe for the data source, methodology used to produce the results and intended use of the data.

Suggestions or comments for improvement of this publication are welcome.

Contributors:

Susan E. Langsdale
Senior Associate Registrar

Linda Shepard
Senior Assistant Registrar and
Manager of Reporting and Research

Barbara Bunch
Senior Research Analyst

Mike Sauer
Senior Research Analyst

Erika Knudsen
Data Management
Analyst/Consultant

Monica Halcomb
Enrollment Information Coordinator

Adam Leary
Research Analyst

Roland A. Côté
Office of the Registrar
Indiana University
Franklin Hall, Room 200
601 East Kirkwood Avenue
Bloomington, Indiana 47405-1223
(812) 855-2654

February 12, 2007

TABLE OF CONTENTS

HIGHLIGHTS	1
TERMINOLOGY	2
COMPARISON WITH FALL TERM	4
HISTORICAL ENROLLMENT SUMMARY	6
CAMPUS LEVEL ENROLLMENT	
HEADCOUNT BY STUDENT LEVEL	7
AUDIT ENROLLMENTS	9
FULL-TIME/PART-TIME	10
CREDIT HOUR LOAD	13
GENDER	15
ETHNIC GROUPS	18
RESIDENCE CLASSIFICATION	22
STUDENT SCHOOL ENROLLMENT	
HEADCOUNT BY STUDENT SCHOOL	25
CREDIT HOUR LOAD (SCHOOL).....	28
COURSE INFORMATION	
CREDIT HOURS AND COURSE ENROLLMENTS	29
G901 ENROLLMENTS	34
COLLEGE DEPARTMENTS	35
GRADE DISTRIBUTION - HISTORICAL	38
PEER INSTITUTIONS	
BIG TEN	41
PERSISTENCE	42

HIGHLIGHTS

Campus enrollment is 36,698 this Spring, a 1.4% (+498 students) increase from last year. This is a record enrollment figure for a spring term.

Undergraduate, graduate and nondegree enrollments have all increased from last year. Professional enrollment is down from the record-high figure reported last year.

The gain in undergraduate enrollment is due to a record number of sophomores and an increase for the freshman class. Junior and senior classes show losses from last year.

Total net credit hours, at 478,783.5, have increased 5,482.5 credit hours from last year, due to an increase at the undergraduate level. Credit hours at the graduate level have decreased from the record high set last year.

The average credit hour load of all students this year is 13.05, a 0.02 credit hour decrease from last year. However, the credit hour load for undergraduates has increased to 14.48.

The share of U.S. minority enrollment (10.4%) and the number (3,833) are record-high figures this term. International students have also reached a record enrollment this year at 3,318.

The proportion of the student body classified as nonresident for fee-paying purposes is 41.5%, the highest share since data became available in 1969. The proportion of undergraduate and professional students classified as nonresident (34.2% and 55.9%, respectively) are also at record highs.

Females comprise 52.2% of the student body this semester, an increase of 0.1 percentage points from last year.

The full-time share of enrollment (85.5%) has increased. The undergraduate share has increased from 93.5% to 94.2%.

The persistence rate from Fall to Spring is 93.3%, a record high rate. There are also record persistence rates at the undergraduate (94.3%) and graduate (94.0%) levels and for both resident, (92.3%) and nonresident, (94.7%) students.

TERMINOLOGY

Data contained in these reports are for operational planning purposes. If official enrollment figures are needed for Indiana University-Bloomington, please consult the University Reporting and Research office (<http://www.indiana.edu/~urr>).

In the fall of 2004, IU implemented a new Student Information System (SIS) consisting of both the implementation of operational (SIS) and reporting and retrieval (IUIE) environments. This conversion has had a profound impact on business processes, terminology and data structures. For analysis and reporting, comparability is often not attainable and has been noted throughout the report. In some cases, the terminology used in SIS is not directly comparable to terms used in our academic businesses (e.g, a program/plan in SIS can be equated to a department/major in our academic world). These general definitions are provided here as a central point of reference.

REPORTING DEFINITIONS

Enrollment Totals:

All reports, unless otherwise noted, use the official reporting period, which since 1984 has been the end of the first week of classes. Prior to 1984, the official reporting time was the end of the third week of classes. Beginning in 1988, auditors (students enrolled in audit hours only) are excluded from the headcount figures. The enrollment total provides a unique headcount of students on campus.

School Enrollment Totals:

Beginning Spring Term 2004, students can be enrolled in dual careers (e.g., MBA/LAW students are in Graduate and Law careers). Students enrolled in multiple careers are counted under each school, so MBA/LAW students will be counted in both Business and Law. Since these students are counted under each school/career, the totals by school will not match the campus total (which is a unique student headcount). This report has been divided into two sections to help distinguish campus level from school level enrollments.

Auditors:

Students registered for audit enrollments, not taking any course for credit, are considered auditors. Since Fall 1988, these students are excluded from Bloomington headcount figures and their enrollments are excluded from course enrollment figures.

Credit Hours and Course Enrollments:

Courses carrying credit-bearing sections are included in credit hour and course enrollment totals. While the credit-bearing section is typically the lecture section of a course, there are instances where the credit is assigned to the discussion or lab section. Audit hours, waitlisted hours, and dropped hours are not included in the totals.

Course School:

The school in which a course is taught is considered the course school. For example, BUS-A100 is taught in the course school of Business and Math-M118 is taught in the course school of Arts and Sciences. University Division does not offer any courses and therefore is not a course school.

Student School:

The school that houses the student's major is considered a student school. In this case, University Division is considered a student school. However, Military Sciences offers courses and is considered a course school but it does not offer majors, so it is not considered a student school.

Student Level:

Students are classified into the following levels of study: Undergraduate, Graduate, Professional, and Nondegree. This is similar to the SIS terminology of student career; however, the professional student level contains the careers of Law and Optometry. Also, nondegree students are not discernable when using the SIS definition of a career.

Full-time/Part-time Status:

Full-time students are defined as undergraduate, professional and nondegree students enrolled in 12 or more hours and graduate students enrolled in eight or more hours. Note that graduate students who are taking the 6-credit G901 advanced research course are classified as part-time students by this definition.

Credit Hour Load:

Currently, Indiana University uses a flat-fee structure for undergraduates, which means that students can take between 12 and 17 hours and be assessed a flat fee. Undergraduates taking less than 12 hours, and graduate, professional, and nondegree students are assessed a per-credit-hour fee. Between Fall 1976 and Fall 1991, the campus followed a per credit hour fee structure for all students.

Term:

A term refers to the specific length of time a student is enrolled in a particular course. Previously, Indiana University had two semesters, and two summer sessions (1 eight week, 1 six week) per academic year. The nomenclature for semester within the SIS system is “term”. Currently, Indiana University has three terms, Fall, Spring, and Summer.

Major:

A major refers to the student’s academic course of study. Students can enroll in multiple majors at once, as long as they finish all the requirements for each before graduation. In SIS, majors are called Academic Plans; however Academic Plans can also refer to minors and certificates. Majors are differentiated from minors in this report.

Course Department:

A course department refers to the department which offers the course. In SIS, course departments are stored as part of the subject area. The course department is represented as the first three or four letters of a course number (e.g., FRIT-F100 is housed in the department of FRIT or French and Italian).

School Abbreviations:

COLL: The College of Arts and Sciences
 GRAD: The Graduate School
 HPER: School of Health, Physical Education, and Recreation
 SCS: School of Continuing Studies
 SLIS: School of Library and Information Science
 SPEA: School of Public and Environmental Affairs

Traditional registration periods:

CSR: Continuing Student Registration takes place in October for spring registration and April for fall registration
 FR: Freshman Registration takes place during the summer as part of the Freshman Orientation program
 NSR: New Student Registration takes place the week before classes begin for new students
 LR: Late Registration occurs the day before the term has begun; a late fee is assessed

IEP:

Intensive English Program (formerly known as CELT, Center for English Language Training). This is a program that enrolls international students in zero-credit courses to improve their English comprehension.

GPA: (Grade Point Average):

This can refer to either the student’s cumulative grade point average over all terms or it can refer to the grade point average for a single term. It can also refer to the grade point average of students in a course or school.

Useful Websites:

Course and Section Enrollments	http://www.indiana.edu/~registra/coursesectn/
Grade Distribution Report	http://www.indiana.edu/~registra/gradedist/
Special Course Listings	http://registrar.indiana.edu/~registra/specialcourse.shtml
Life Sciences	http://lifesciences.iu.edu/students/

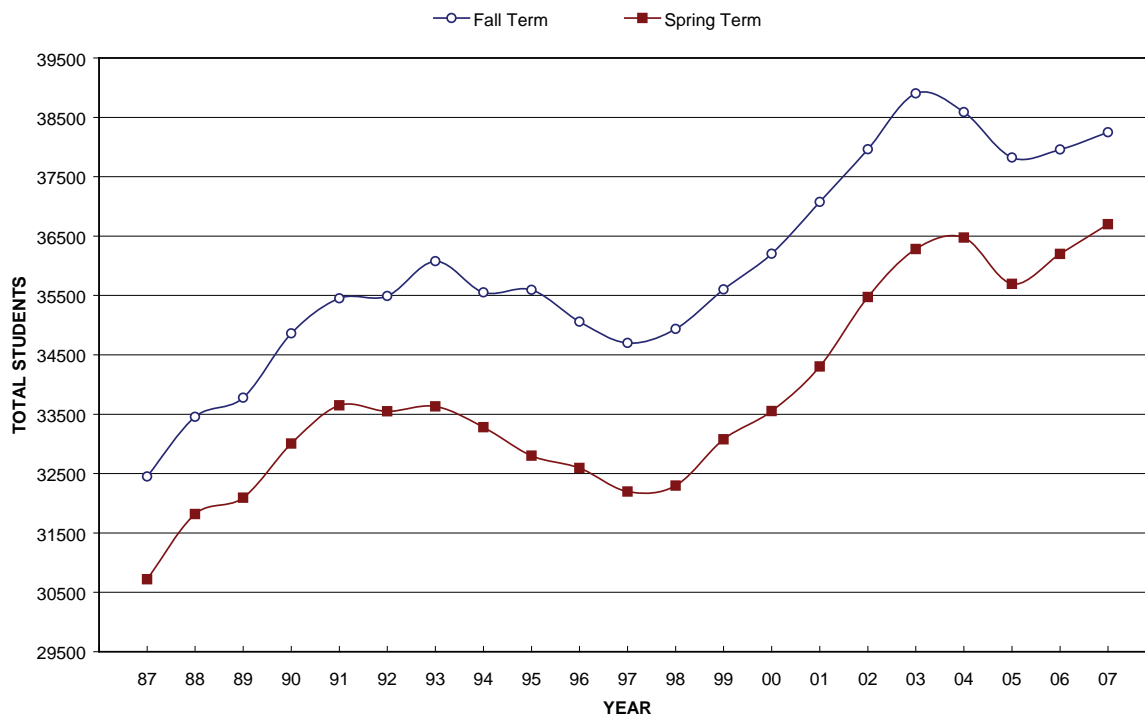
COMPARISON WITH FALL TERM

The Spring 2007 enrollment record (at 36,698) was somewhat surprising considering that Fall 2006 enrollment was not a record-high figure. The enrollment for Fall 2002, of 38,903, remains the fall record-high figure. The enrollment increase for Fall 2006 (+0.8%), was lower than the increase for Spring 2007 (+1.4%). Traditionally, spring enrollments are lower than fall enrollments and this year is no exception with Spring 2007 enrollment showing 1,549 fewer students than Fall 2006 enrollment at 38,247. Undergraduate enrollment for Spring is 27,652 compared to Fall, 29,258.

At the undergraduate level in the Fall, the freshman class reported a record enrollment, whereas for Spring the sophomore class has reached a new record figure. At each level, the gains and losses for Fall mirror the gains and losses for Spring: undergraduate (+0.5% in the fall, compared to +1.1% in the spring), graduate (+0.9% in the fall, compared to +1.5% in the spring), professional (-1.7% for fall and -2.7% for spring), and nondegree (+11.4% for fall and +10.1% for spring).

Figure 1 shows the trend for fall and spring term campus enrollments since 1987. Note that the year label on the graph follows the spring term.

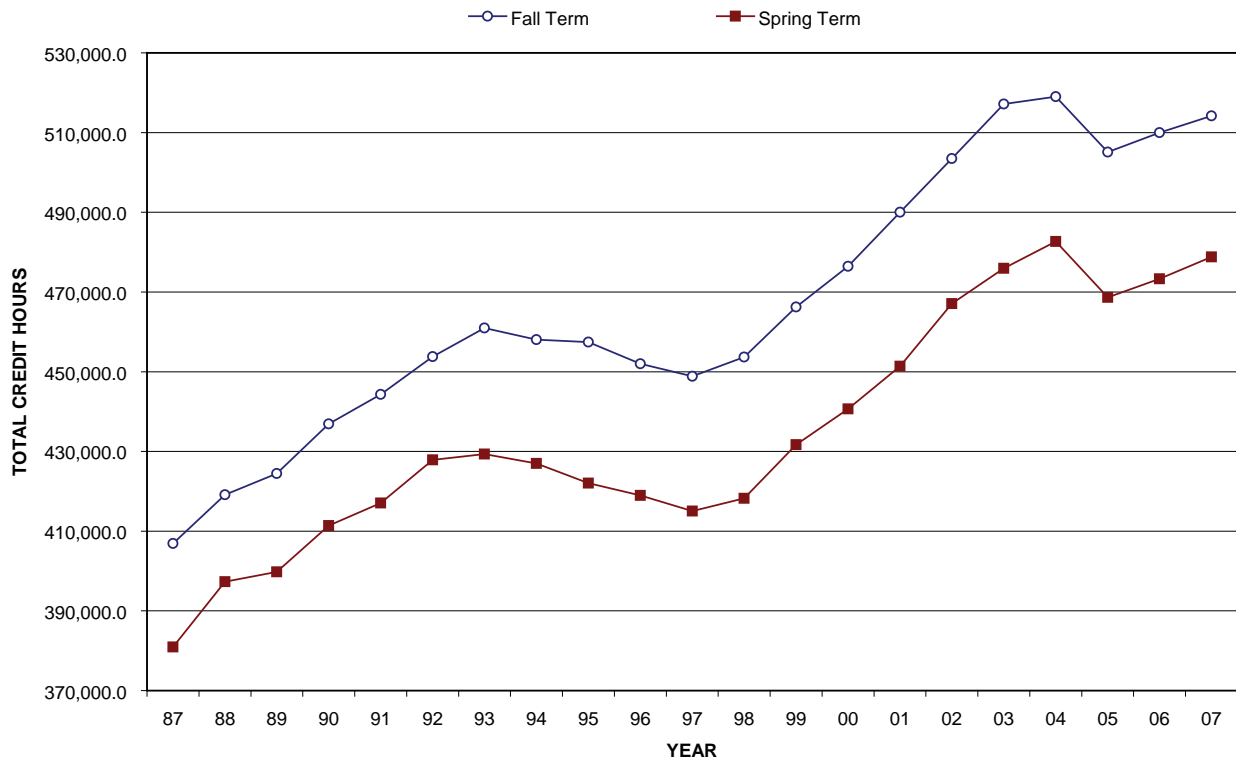
FIGURE 1: FALL AND SPRING ENROLLMENT COMPARISON



There are record shares of nonresident students at the campus and undergraduate levels for both Spring Term (41.5% and 34.2%, respectively) and Fall Term (41.5% and 33.9%, respectively). Also worth noting, the entire gain in campus enrollment for both Spring and Fall terms can be attributed to gains in nonresident enrollments (+641 students, +4.4% for Spring and +512 students, +3.3% for Fall) as resident enrollments show losses. The same is true for undergraduate enrollments; the gains in undergraduate enrollments are due to nonresident students for Spring and Fall, as resident enrollments show losses.

Total credit hours for fall and spring terms are graphically displayed in Figure 2. As with headcount, the percentage gain in total credit hours is higher for Spring Term (+1.2%, +5,482.5 hours) compared to Fall Term (+0.8%, +4,227.0 hours). The same trend is present at the undergraduate course level: Spring Term is up 1.5% (+5,901.5 hours) and Fall Term showed a slightly lower increase of 1.0% (+4,162.5 hours).

FIGURE 2: FALL AND SPRING CREDIT HOUR COMPARISON



Typically, students take a larger credit hour load fall term compared to spring term. Fall 2006 reported a substantial increase in the undergraduate credit hour load (at 14.73, +0.07 hours) reaching a new record figure. The Spring 2007 undergraduate credit hour load, at 14.48, is up from the previous spring (+0.07 hours) but the record from 1975 (14.52) remains. The campus credit hour load for Spring has decreased slightly to 13.05 (-0.02 hours) while the load for Fall 2006 had increased slightly to 13.44 (+0.01 hours).

HISTORICAL ENROLLMENT SUMMARY
END OF THE FIRST WEEK OF CLASSES - SPRING TERMS

	Record High Years		1996	1997	1998	1999	2000	2001	2002	2003	2004	2005	2006	2007	Change	
	Year	Num/Pct													Number	Percent
ENROLLMENT:																
Freshman			5,138	5,250	5,348	5,886	6,128	6,277	6,279	6,411	5,827	5,647	6,045	6,198	+153	+2.5%
Sophomore			5,675	5,563	5,798	5,961	5,924	6,331	6,650	6,577	6,759	6,297	6,190	6,813	+623	+10.1%
Junior			5,340	5,102	5,149	5,469	5,740	5,504	6,043	6,145	6,336	6,394	6,156	5,829	-327	-5.3%
Senior			7,817	7,755	7,736	7,732	7,831	8,213	8,536	8,797	9,123	9,017	8,969	8,812	-157	-1.8%
UNDERGRADUATE			23,970	23,670	24,031	25,048	25,623	26,325	27,508	27,930	28,045	27,355	27,360	27,652	+292	+1.1%
GRADUATE	1976	7,755	6,288	6,240	6,167	6,096	5,949	5,936	6,048	6,295	6,553	6,508	6,601	6,703	+102	+1.5%
PROFESSIONAL			875	894	900	891	876	879	874	906	907	915	948	922	-26	-2.7%
NONDEGREE/UNCLASSIFIED	1994	1,522	1,459	1,391	1,200	1,043	1,105	1,163	1,044	1,150	968	917	1,291	1,421	+130	+10.1%
TOTAL			32,592	32,195	32,298	33,078	33,553	34,303	35,474	36,281	36,473	35,695	36,200	36,698	+498	+1.4%
% NONRESIDENT																
Undergraduate			26.3%	26.6%	27.1%	27.4%	28.4%	29.4%	30.8%	32.1%	32.9%	33.0%	32.9%	34.2%		
Graduate			72.4%	73.8%	73.2%	72.6%	72.5%	73.1%	73.1%	72.4%	73.0%	71.4%	71.2%	72.2%		
Professional			41.0%	41.8%	44.9%	44.4%	47.0%	45.2%	45.9%	47.4%	49.0%	50.5%	53.8%	55.9%		
Campus			36.3%	36.9%	36.9%	36.4%	37.0%	37.7%	38.6%	39.4%	40.5%	40.3%	40.3%	41.5%		
% FULL-TIME			83.0%	83.1%	83.7%	84.4%	85.2%	85.6%	85.5%	85.2%	86.2%	n/a	85.3%	85.5%		
% FEMALE			53.1%	53.1%	52.9%	52.9%	53.0%	52.7%	52.3%	52.3%	52.1%	51.6%	52.1%	52.2%		
% US MINORITY			9.2%	9.1%	9.0%	9.2%	9.2%	9.3%	9.2%	9.2%	9.5%	9.7%	10.3%	10.4%		
FALL-TO-SPRING PERSISTENCE																
Freshmen	1988	93.5%	91.5%	91.7%	91.7%	92.3%	91.9%	91.7%	92.0%	92.5%	92.1%	92.2%	92.3%	92.9%		
Sophomores			92.0%	93.2%	92.4%	93.5%	93.6%	93.0%	94.6%	93.4%	94.5%	94.7%	94.0%	94.4%		
Juniors			93.5%	93.2%	93.7%	93.7%	93.4%	93.0%	95.9%	95.5%	96.2%	95.5%	96.4%	95.7%		
Seniors			91.6%	92.1%	92.9%	92.7%	92.2%	92.8%	93.9%	94.1%	94.2%	94.2%	93.9%	94.4%		
UNDERGRADUATE			92.1%	92.5%	92.6%	93.0%	92.8%	92.6%	94.0%	93.8%	94.2%	94.1%	94.1%	94.3%		
CREDIT HOURS			418,933.5	415,007.5	418,220.5	431,669.0	440,672.5	451,397.0	467,072.5	475,964.5	482,658.5	468,644.5	473,301.0	478,783.5	+5,482.5	+1.2%
AVERAGE CREDIT HOURS																
Undergraduate	1975	14.52	14.38	14.46	14.38	14.37	14.42	14.46	14.37	14.37	14.46	14.37	14.41	14.48		
Campus			12.85	12.89	12.95	13.05	13.13	13.16	13.17	13.12	13.23	13.13	13.07	13.05		
COURSE ENROLLMENTS			145,793	145,793	147,067	151,572	155,135	160,588	165,889	168,243	169,659	n/a	165,830	167,356	+1,526	+0.9%

Note: Shaded areas indicate record high figures based on available data (generally beginning in 1973).

CAMPUS LEVEL ENROLLMENT

HEADCOUNT BY STUDENT LEVEL

Indiana University-Bloomington enrollment, at 36,698, is up 1.4% (+498 students) from last year. This is highest spring term enrollment on record. All levels show increases from last year except for the professional level which shows a loss from last year's record-high figure. At the undergraduate level, the sophomore class reports a record-high figure.

Table 1 shows enrollment by student level and class for this year and last year. Figure 3 shows how undergraduate enrollment mirrors campus level enrollment. However, for this Spring, campus enrollment shows a record-high figure while the record-high figure for undergraduate enrollment is from 2004. See Table 2 for historical enrollments beginning with Spring 1946.

TABLE 1: ENROLLMENT BY STUDENT LEVEL AND CLASS
SPRING TERMS

Class/Level	Spring 2006	Spring 2007	Change	Percent Change
Freshman	6,045	6,198	+ 153	+ 2.5%
Sophomore	6,190	6,813	+ 623	+ 10.1%
Junior	6,156	5,829	- 327	- 5.3%
Senior	8,969	8,812	- 157	- 1.8%
Undergraduate Total	27,360	27,652	+ 292	+ 1.1%
Masters	3,339	3,337	- 2	- 0.1%
Doctoral	3,262	3,366	+ 104	+ 3.2%
Graduate Total	6,601	6,703	+ 102	+ 1.5%
Professional Total	948	922	- 26	- 2.7%
High School	43	30	- 13	- 30.2%
Special Undergraduate	415	550	+ 135	+ 32.5%
Special Grad/Prof	833	841	+ 8	+ 1.0%
Nondegree Total	1,291	1,421	+ 130	+ 10.1%
TOTAL	36,200	36,698	+ 498	+ 1.4%

FIGURE 3: TOTAL AND UNDERGRADUATE ENROLLMENT

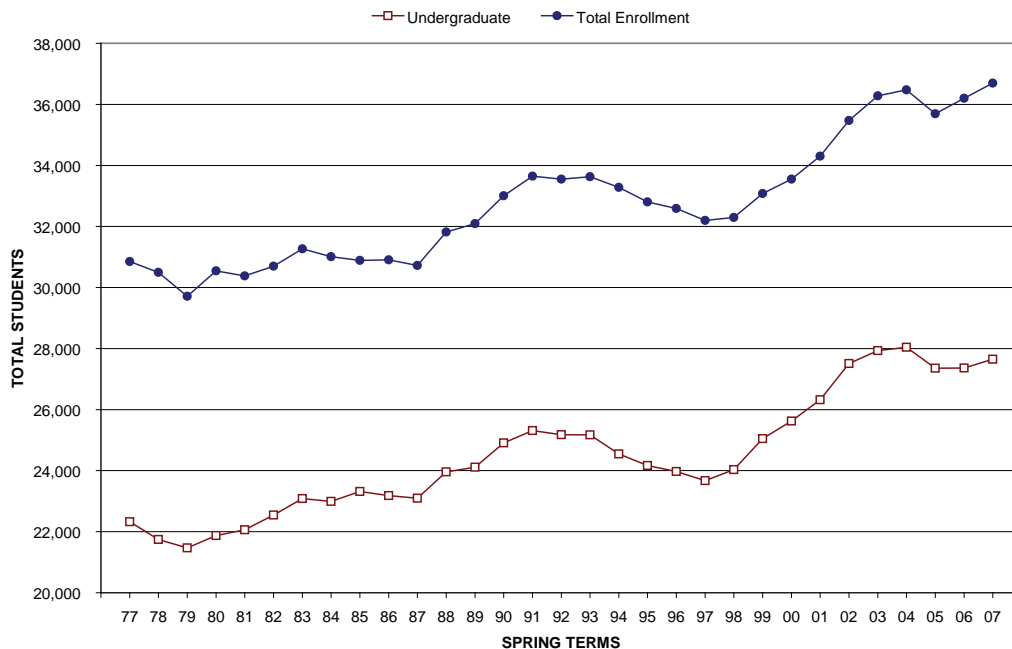


TABLE 2: HISTORICAL ENROLLMENT BY CLASS AND LEVEL
 SPRING TERMS

Spring Terms	Freshman	Sophomore	Junior	Senior	Undergraduate	Graduate (1)	Professional (1)	Non-Degree/Unclass.	Total
1946	2,610	1,242	920	662	5,434	795			6,229
1947	2,935	2,619	1,929	1,250	8,733	1,246			9,979
1948	2,016	2,060	2,637	1,939	8,652	1,465			10,117
1949	1,943	1,554	2,288	2,592	8,377	1,757			10,134
1950	1,979	1,573	1,881	2,492	7,925	2,176			10,101
1951	1,747	1,742	1,667	1,943	7,099	2,621			9,720
1952	1,832	1,429	1,574	1,695	6,530	2,558		274	9,362
1953	2,074	1,421	1,441	1,584	6,520	2,276		189	8,985
1954	2,172	1,551	1,473	1,480	6,676	2,247		227	9,150
1955	2,383	1,699	1,625	1,537	7,244	2,506		196	9,946
1956	2,414	1,860	1,696	1,661	7,631	2,751		236	10,618
1957	2,515	1,852	1,827	1,800	7,994	2,865		171	11,030
1958	2,312	1,832	1,831	1,912	7,887	3,201		214	11,302
1959	2,433	1,673	1,737	2,012	7,855	3,243		236	11,334
1960	2,908	1,842	1,766	1,894	8,410	3,698		305	12,413
1961	3,644	2,042	1,836	1,909	9,431	3,951		244	13,626
1962	3,872	2,594	2,219	1,940	10,625	4,321		263	15,209
1963	4,063	2,862	2,600	2,270	11,795	4,770		405	16,970
1964	4,418	2,831	2,892	2,742	12,883	5,228		340	18,451
1965	4,458	3,072	3,022	3,177	13,729	6,012		330	20,071
1966	5,239	3,924	3,301	2,915	15,379	6,559		324	22,262
1967	5,126	4,490	3,704	3,084	16,404	7,054		383	23,841
1968	5,209	4,085	4,190	4,162	17,646	7,724		422	25,792
1969	5,728	4,070	4,234	5,032	19,064	7,634		389	27,087
1970	5,844	4,572	4,369	5,078	19,863	7,698		256	27,817
1971	6,095	4,666	4,651	5,169	20,581	7,998		249	28,828
1972	6,040	4,655	4,913	5,346	20,954	7,981		693	29,628
1973	5,897	4,540	4,868	5,689	20,994	7,411	626	565	29,596
1974	5,654	4,453	4,702	5,413	20,222	7,492	560	482	28,761
1975	6,048	4,511	4,844	5,250	20,653	7,591	585	686	29,535
1976	6,384	5,083	4,945	5,496	21,908	7,755	568	839	31,070
1977	6,378	5,332	5,118	5,496	22,324	6,939	597	989	30,849
1978	6,049	4,999	5,217	5,479	21,744	6,841	847	1,064	30,496
1979	5,729	5,004	5,134	5,602	21,469	6,313	869	1,058	29,710
1980	6,120	4,823	5,149	5,781	21,873	6,439	846	1,376	30,545
1981	5,902	5,100	5,136	5,923	22,061	6,325	846	1,148	30,380
1982	6,385	4,978	5,345	5,840	22,548	6,101	897	1,153	30,700
1983	6,298	5,330	5,320	6,135	23,083	6,029	892	1,262	31,266
1984	5,447	5,730	5,620	6,194	22,991	5,867	863	1,290	31,011
1985 (2)	5,651	5,482	5,565	6,622	23,320	5,653	840	1,077	30,890
1986	5,591	5,652	5,327	6,610	23,180	5,703	857	1,167	30,907
1987	5,484	5,735	5,462	6,414	23,095	5,672	887	1,066	30,720
1988	5,858	5,885	5,611	6,608	23,962	5,851	889	1,117	31,819
1989 (3)	5,312	6,185	5,892	6,723	24,112	5,912	918	1,151	32,093
1990 (4)	5,714	6,071	6,132	6,994	24,911	5,891	866	1,337	33,005
1991	5,227	6,638	5,908	7,539	25,312	5,958	880	1,500	33,650
1992 (5)	5,273	6,039	6,291	7,575	25,178	6,093	855	1,424	33,550
1993	5,484	5,894	5,794	8,001	25,173	6,243	852	1,363	33,631
1994	5,307	6,031	5,589	7,623	24,550	6,347	861	1,522	33,280
1995	5,347	5,697	5,648	7,478	24,170	6,390	880	1,362	32,802
1996	5,138	5,675	5,340	7,817	23,970	6,288	875	1,459	32,592
1997	5,250	5,563	5,102	7,755	23,670	6,240	894	1,391	32,195
1998	5,348	5,798	5,149	7,736	24,031	6,167	900	1,200	32,298
1999	5,886	5,961	5,469	7,732	25,048	6,096	891	1,043	33,078
2000	6,128	5,924	5,740	7,831	25,623	5,949	876	1,105	33,553
2001	6,277	6,331	5,504	8,213	26,325	5,936	879	1,163	34,303
2002	6,279	6,650	6,043	8,536	27,508	6,048	874	1,044	35,474
2003	6,411	6,577	6,145	8,797	27,930	6,295	906	1,150	36,281
2004	5,827	6,759	6,336	9,123	28,045	6,553	907	968	36,473
2005	5,647	6,297	6,394	9,017	27,355	6,508	915	917	35,695
2006	6,045	6,190	6,156	8,969	27,360	6,601	948	1,291	36,200
2007	6,198	6,813	5,829	8,812	27,652	6,703	922	1,421	36,698

Notes:

1. Prior to 1973, both graduate and professional students are included in the graduate count.
2. Effective Fall 1985, the enrollment reporting cut-off date is the end of the first week of classes rather than the end of the third week.
3. Effective Fall 1989, auditors (students enrolled in audit hours only) are excluded from the headcount.
4. Effective Summer 1989, associate level Optometry students are reported in the undergraduate headcount. Previously, all Optometry students were reported in the professional headcount.
5. Effective Fall 1992, the Medical Sciences program moved most of its professional registrations to IUPUI.

Shaded areas indicate record highs.

AUDIT ENROLLMENTS

Auditors are defined as students registered for audit enrollments only (i.e., not taking any courses for credit). **Auditing students** are defined as students who are auditing one or more courses, regardless of whether they are also enrolled in other courses for credit. **Audit enrollments** and **audit hours** are the total number of course spaces and enrollment hours accounted for by students who are auditing courses. Since Fall 1988, auditors have been excluded from Bloomington campus headcount figures and all audit enrollments have been excluded from course enrollment figures. An audit summary for this year and last year is shown in Table 3. Audit enrollments by course school and department are shown in Table 4.

TABLE 3: AUDIT ENROLLMENTS
SPRING TERMS

	Spring 2006	Spring 2007	Change	Percent Change
Students				
Auditors	24	28	+ 4	+ 16.7%
Auditing Students	63	70	+ 7	+ 11.1%
Audit Enrollments				
by Auditors	27	33	+ 6	+ 22.2%
by Auditing Students	67	84	+ 17	+ 25.4%
Audit Hours				
by Auditors	80.0	99.0	+ 19.0	+ 23.8%
by Auditing Students	186.0	261.0	+ 75.0	+ 40.3%

TABLE 4: AUDIT ENROLLMENTS BY COURSE SCHOOL AND DEPARTMENT
SPRING TERMS

School/Department	Audit Enrollments		School/Department	Audit Enrollments	
	Spring 2006	Spring 2007		Spring 2006	Spring 2007
Arts and Sciences			Arts and Sciences		
American Studies	0	1	Political Science	2	0
Anthropology	3	2	Psychological and Brain Sciences	1	1
Astronomy	1	1	Religious Studies	1	0
Biology	0	1	Second Language Studies	0	4
Central Eurasian Studies	6	8	Slavic Languages and Literatures	1	1
Chemistry	0	2	Sociology	3	1
Classical Studies	1	1	Spanish and Portuguese	0	8
Collins Living Learning Center	1	0	Speech and Hearing Sciences	6	3
Comparative Literature	0	1	Theatre and Drama		2
East Asian Lang and Cult.	3	3	Arts and Sciences Total	49	69
Economics	3	0	Business	0	0
English	0	5	Education	7	8
Fine Arts	2	7	HPER	3	7
Folklore	1	2	Informatics	9	4
French and Italian	2	6	Journalism	0	0
Geological Sciences	1	0	Labor Studies	1	0
Germanic Studies	3	3	Law	12	16
History	1	2	Library and Information Science	2	2
Honors	0	1	Medical Sciences	2	1
Linguistics	4	2	Music	2	5
Mathematics	0	1	Optometry	1	0
Near Eastern Languages and Cultures	1	0	SPEA	6	5
Philosophy	2	0	TOTAL AUDIT ENROLLMENTS	94	117

FULL-TIME / PART-TIME

Full-time students are defined as undergraduate, professional, and nondegree students enrolled in 12 or more credit hours and graduate students enrolled in 8 hours or more. Prior to 1988, graduate students had to be enrolled in at least 9 hours to be considered full-time. Because the definitions of full-time and part-time students are based on credit hours, 818 graduate students enrolled in the 6-credit G901 advanced research course are classified as part-time students in this section. The definition of a full-time undergraduate student is different from the definition of a full-time load for undergraduates. A **full-time load** for undergraduate students is 15.5 credit hours based on completing a bachelor's degree in eight semesters. The *Credit Hour Load* section of this report shows credit hour load of undergraduate students.

The full-time share of enrollment (85.5%) has increased 0.2 percentage points from last year. This level begins to approach the record-high share of Spring 2004. The undergraduate and professional levels show increases in the full-time shares of enrollment with the undergraduate level (94.2%) setting a new record-high share. The graduate level (64.4%) full-time share of enrollment remains unchanged from last year while the nondegree share has decreased.

The number of full-time students (31,365) has increased 1.6% (+488 students) from last year, nearing the record number of full-time students set in Spring 2004. There are increases in full-time enrollments at the undergraduate (+464 students) and graduate (+64 students) levels with the graduate level showing a record full-time enrollment of 4,317. At the undergraduate level, the increase in full-time enrollment is driven by the increases in full-time freshmen (6,080) and sophomores (6,596).

Overall, the part-time share of enrollment has decreased 0.2 percentage points from last year; reflecting the rise in full-time share. The undergraduate and professional levels show decreases in the part-time share of enrollment with the graduate level holding steady and the nondegree level increasing its share by 3.2 percentage points.

Undergraduate enrollment by full-time/part-time status is shown in Table 5. See Table 6 for historical full-time/part-time enrollments for all student levels and Table 7 for historical full-time/part-time shares of all student levels.

TABLE 5: UNDERGRADUATE FULL-TIME AND PART-TIME
ENROLLMENT BY CLASS
SPRING TERMS

Class Standing	Full-Time			Percent	Part-Time			Percent
	Spring 2006	Spring 2007	Change	Change	Spring 2006	Spring 2007	Change	Change
Freshman	5,887	6,080	+ 193	+ 3.3%	158	118	- 40	- 25.3%
Sophomore	5,949	6,596	+ 647	+ 10.9%	241	217	- 24	- 10.0%
Junior	5,738	5,467	- 271	- 4.7%	418	362	- 56	- 13.4%
Senior	8,020	7,915	- 105	- 1.3%	949	897	- 52	- 5.5%
Total Undergraduate	25,594	26,058	+ 464	+ 1.8%	1,766	1,594	- 172	- 9.7%

TABLE 6: FULL-TIME AND PART-TIME ENROLLMENT BY LEVEL
SPRING TERMS

Spring Term	Undergraduate		Graduate		Professional		Nondegree		Total	
	Full-Time	Part-Time	Full-Time	Part-Time	Full-Time	Part-Time	Full-Time	Part-Time	Full-Time	Part-Time
1977	20,743	1,583	4,214	2,723	559	45	155	827	25,671	5,178
1978	19,951	1,793	3,962	2,879	797	52	164	898	24,874	5,622
1979	19,434	2,035	3,662	2,650	813	59	105	951	24,014	5,696
1980	19,953	1,920	3,707	2,732	797	53	143	1,229	24,607	5,938
1981	20,085	1,976	3,587	2,738	767	80	149	998	24,588	5,792
1982	20,551	1,997	3,443	2,658	824	75	131	1,020	24,950	5,750
1983	21,074	2,009	3,433	2,596	819	86	159	1,090	25,485	5,781
1984	20,874	2,117	3,463	2,404	762	107	273	1,011	25,372	5,639
1985	21,175	2,145	3,347	2,306	730	116	226	845	25,478	5,412
1986	21,153	2,027	3,333	2,370	761	97	197	969	25,444	5,463
1987	21,080	2,015	3,222	2,450	782	105	168	898	25,252	5,468
1988	21,948	2,014	3,439	2,412	799	90	193	924	26,379	5,440
1989	22,073	2,039	3,616	2,296	814	104	223	928	26,726	5,367
1990	22,716	2,195	3,677	2,214	796	70	216	1,121	27,405	5,600
1991	23,149	2,163	3,755	2,203	812	68	172	1,328	27,888	5,762
1992	22,924	2,254	3,840	2,253	761	94	166	1,258	27,691	5,859
1993	23,036	2,137	3,893	2,350	758	94	149	1,214	27,836	5,795
1994	22,669	1,881	4,013	2,334	746	115	191	1,331	27,619	5,661
1995	22,453	1,717	3,947	2,443	755	125	164	1,198	27,319	5,483
1996	22,286	1,684	3,866	2,422	736	139	168	1,291	27,056	5,536
1997	22,067	1,603	3,801	2,439	758	136	143	1,248	26,769	5,426
1998	22,352	1,679	3,779	2,388	760	140	145	1,055	27,036	5,262
1999	23,330	1,718	3,735	2,361	735	156	128	915	27,928	5,150
2000	23,995	1,628	3,713	2,236	741	135	141	964	28,590	4,963
2001	24,716	1,609	3,761	2,175	743	136	142	1,021	29,362	4,941
2002	25,662	1,846	3,792	2,256	725	149	158	886	30,337	5,137
2003	26,018	1,912	4,006	2,289	755	151	136	1,014	30,915	5,366
2004	26,291	1,754	4,267	2,286	761	146	110	858	31,429	5,044
2005	n/a	n/a	n/a	n/a	n/a	n/a	n/a	n/a	n/a	n/a
2006	25,594	1,766	4,253	2,348	857	91	173	1,118	30,877	5,323
2007	26,058	1,594	4,317	2,386	845	77	145	1,276	31,365	5,333
Change from Last Year	+ 464 + 1.8%	- 172 - 9.7%	+ 64 + 1.5%	+ 38 + 1.6%	- 12 - 1.4%	- 14 - 15.4%	- 28 - 16.2%	+ 158 + 14.1%	+ 488 + 1.6%	+ 10 + 0.2%

Note: Shaded areas indicate record highs.

TABLE 7: FULL-TIME AND PART-TIME STUDENT SHARES BY LEVEL
SPRING TERMS

Spring Term	Undergraduate		Graduate		Professional		Nondegree		Total	
	Full-Time	Part-Time	Full-Time	Part-Time	Full-Time	Part-Time	Full-Time	Part-Time	Full-Time	Part-Time
1977	92.9%	7.1%	60.8%	39.2%	92.6%	7.4%	15.8%	84.2%	83.2%	16.8%
1978	91.8%	8.2%	57.9%	42.1%	93.9%	6.1%	15.4%	84.6%	81.6%	18.4%
1979	90.5%	9.5%	58.0%	42.0%	93.2%	6.8%	9.9%	90.1%	80.8%	19.2%
1980	91.2%	8.8%	57.6%	42.4%	93.8%	6.2%	10.4%	89.6%	80.6%	19.4%
1981	91.0%	9.0%	56.7%	43.3%	90.6%	9.4%	13.0%	87.0%	80.9%	19.1%
1982	91.1%	8.9%	56.4%	43.6%	91.7%	8.3%	11.4%	88.6%	81.3%	18.7%
1983	91.3%	8.7%	56.9%	43.1%	90.5%	9.5%	12.7%	87.3%	81.5%	18.5%
1984	90.8%	9.2%	59.0%	41.0%	87.7%	12.3%	21.3%	78.7%	81.8%	18.2%
1985	90.8%	9.2%	59.2%	40.8%	86.3%	13.7%	21.1%	78.9%	82.5%	17.5%
1986	91.3%	8.7%	58.4%	41.6%	88.7%	11.3%	16.9%	83.1%	82.3%	17.7%
1987	91.3%	8.7%	56.8%	43.2%	88.2%	11.8%	15.8%	84.2%	82.2%	17.8%
1988	91.6%	8.4%	58.8%	41.2%	89.9%	10.1%	17.3%	82.7%	82.9%	17.1%
1989	91.5%	8.5%	61.2%	38.8%	88.7%	11.3%	19.4%	80.6%	83.3%	16.7%
1990	91.2%	8.8%	62.4%	37.6%	91.9%	8.1%	16.2%	83.8%	83.0%	17.0%
1991	91.5%	8.5%	63.0%	37.0%	92.3%	7.7%	11.5%	88.5%	82.9%	17.1%
1992	91.0%	9.0%	63.0%	37.0%	89.0%	11.0%	11.7%	88.3%	82.5%	17.5%
1993	91.5%	8.5%	62.4%	37.6%	89.0%	11.0%	10.9%	89.1%	82.8%	17.2%
1994	92.3%	7.7%	63.2%	36.8%	86.6%	13.4%	12.5%	87.5%	83.0%	17.0%
1995	92.9%	7.1%	61.8%	38.2%	85.8%	14.2%	12.0%	88.0%	83.3%	16.7%
1996	93.0%	7.0%	61.5%	38.5%	84.1%	15.9%	11.5%	88.5%	83.0%	17.0%
1997	93.2%	6.8%	60.9%	39.1%	84.8%	15.2%	10.3%	89.7%	83.1%	16.9%
1998	93.0%	7.0%	61.3%	38.7%	84.4%	15.6%	12.1%	87.9%	83.7%	16.3%
1999	93.1%	6.9%	61.3%	38.7%	82.5%	17.5%	12.3%	87.7%	84.4%	15.6%
2000	93.6%	6.4%	62.4%	37.6%	84.6%	15.4%	12.8%	87.2%	85.2%	14.8%
2001	93.9%	6.1%	63.4%	36.6%	84.5%	15.5%	12.2%	87.8%	85.6%	14.4%
2002	93.3%	6.7%	62.7%	37.3%	83.0%	17.0%	15.1%	84.9%	85.5%	14.5%
2003	93.2%	6.8%	63.6%	36.4%	83.3%	16.7%	11.8%	88.2%	85.2%	14.8%
2004	93.7%	6.3%	65.1%	34.9%	83.9%	16.1%	11.4%	88.6%	86.2%	13.8%
2005	n/a	n/a	n/a	n/a	n/a	n/a	n/a	n/a	n/a	n/a
2006	93.5%	6.5%	64.4%	35.6%	90.4%	9.6%	13.4%	86.6%	85.3%	14.7%
2007	94.2%	5.8%	64.4%	35.6%	91.6%	8.4%	10.2%	89.8%	85.5%	14.5%

Note: Shaded areas indicate record highs.

CREDIT HOUR LOAD

At the campus level, the average credit hour load (13.05) has decreased 0.02 credit hours from last year. The average credit hour load has been decreasing since a record-high load of 13.23 was attained in Spring 2004. This trend is in contrast to the credit hour load trend for fall terms, where credit hours have been steadily increasing over the past ten years, only decreasing once in Fall 2004. The average credit hour loads for undergraduates (14.48) and graduates (8.83) have increased this year, while the average credit hour load for professionals (14.98) has decreased from the record-high load (15.23) set last year. The credit hour load for nondegree students (3.87) has also decreased this year, to the lowest credit hour load on record (since 1975).

Between Fall 1977 and Spring 1991, the campus followed a per-credit-hour fee structure. Beginning Fall 1991, the Bloomington campus returned to a flat fee structure. The flat-fee structure is based on undergraduate students taking 12-17 credit hours, with the actual fee based on the student taking close to 16 hours.

TABLE 8: HISTORICAL AVERAGE CREDIT HOUR LOAD
SPRING TERMS

Spring Term	Freshman	Sophomore	Junior	Senior	Undergraduate Total	Graduate	Professional	Non-Degree/ Unclassified	Total
1975	14.59	14.71	14.71	14.11	14.52	8.11	13.51	6.37	12.66
1976	14.57	14.51	14.61	14.08	14.44	8.17	13.84	5.96	12.64
1977	14.55	14.46	14.59	13.91	14.38	8.26	13.75	5.91	12.72
1978	14.31	14.14	14.20	13.61	14.07	7.75	14.08	5.96	12.37
1979	14.16	13.89	14.04	13.36	13.86	7.66	14.08	5.13	12.24
1980	14.21	14.01	13.97	13.27	13.86	7.88	14.48	5.06	12.22
1981	14.14	13.83	13.86	13.16	13.74	7.86	14.07	5.27	12.20
1982	14.23	13.65	13.79	13.13	13.71	7.92	14.41	5.13	12.26
1983	14.26	13.72	13.74	13.14	13.72	7.96	14.40	5.33	12.29
1984	14.23	13.87	13.79	12.93	13.68	8.03	14.02	6.67	12.33
1985	14.19	13.83	13.81	13.15	13.72	8.05	13.96	6.65	12.44
1986	14.24	13.82	13.74	13.15	13.71	7.95	13.87	6.22	12.37
1987	14.22	13.84	13.88	13.06	13.72	7.95	13.87	6.23	12.40
1988	14.13	13.81	13.84	13.12	13.71	8.43	14.13	6.27	12.49
1989	14.08	13.80	13.76	13.08	13.65	8.47	14.11	6.59	12.46
1990	14.07	13.78	13.72	13.16	13.66	8.51	14.41	6.35	12.46
1991	14.04	13.85	13.70	13.14	13.64	8.50	14.44	5.63	12.39
1992	14.58	14.42	14.29	13.47	14.13	8.51	14.07	5.66	12.75
1993	14.57	14.30	14.33	13.63	14.15	8.57	14.40	5.35	12.72
1994	14.70	14.47	14.46	13.73	14.29	8.75	14.98	5.11	12.83
1995	14.76	14.55	14.56	13.81	14.37	8.63	14.65	4.90	12.87
1996	14.77	14.66	14.51	13.82	14.38	8.67	14.81	4.67	12.85
1997	14.82	14.67	14.64	13.94	14.46	8.60	14.79	4.22	12.89
1998	14.77	14.62	14.59	13.80	14.38	8.68	14.94	4.64	12.95
1999	14.70	14.62	14.56	13.80	14.37	8.76	14.78	4.91	13.05
2000	14.79	14.50	14.55	13.99	14.42	8.85	14.85	4.88	13.13
2001	14.85	14.64	14.53	13.99	14.46	8.84	14.68	4.56	13.16
2002	14.73	14.65	14.41	13.85	14.37	8.86	14.91	5.08	13.17
2003	14.81	14.63	14.28	13.90	14.37	8.84	14.92	4.85	13.12
2004	14.88	14.76	14.47	13.95	14.46	8.97	15.15	4.78	13.23
2005	14.80	14.66	14.36	13.90	14.37	8.81	14.96	4.99	13.13
2006	14.79	14.65	14.34	14.05	14.41	8.78	15.23	5.08	13.07
2007	14.86	14.74	14.43	14.03	14.48	8.83	14.98	3.87	13.05
Change from Last Year	+ 0.07	+ 0.09	+ 0.09	- 0.02	+ 0.07	+ 0.05	- 0.25	- 1.21	- 0.02

Notes:

1. Shaded areas indicate record highs.
2. Between Fall 1977 and Fall 1990, the campus followed a per-credit hour fee structure.

Within the undergraduate level, all credit hour loads have increased with the exception of the credit hour load for seniors. The average credit hour loads for freshmen and sophomores are the second highest figures on record. Within the graduate level, the credit hour load for doctoral students is a new record-high figure.

Students typically take a higher number of courses in the fall (Fall 2006, 13.44) than they do in the spring (Spring 2007, 13.05). The campus credit hour load increased slightly in the Fall, while it decreased slightly in the Spring. When looking at the average credit hour load by student level, the increases in credit hour loads in the Fall were replicated in the spring, except for the graduate level, where the load decreased slightly in the fall, but increased in the Spring.

GENDER

The number of women attending IU-Bloomington (19,139) has reached a record high this year due to a record number of female graduate (3,435), professional (446) and nondegree (939) students. The number of men (17,559) is also at a record high this year in part due to the record number of enrolled students for Spring 2007. Figure 4 illustrates the trend of female students being the majority on campus and thus more reflective of society.

Despite record-high numbers of male and female students, the female share of students (52.2%) has slightly increased from last year while the male share of enrollment (47.8%) has slightly decreased. The female share of graduate students has reached a record high of 51.2% while the male share of undergraduate students has maintained the record high of 48.2% from last year. The female share of professional students has increased 2.0 percentage points from last year.

FIGURE 4: ENROLLMENT BY GENDER
SPRING TERMS

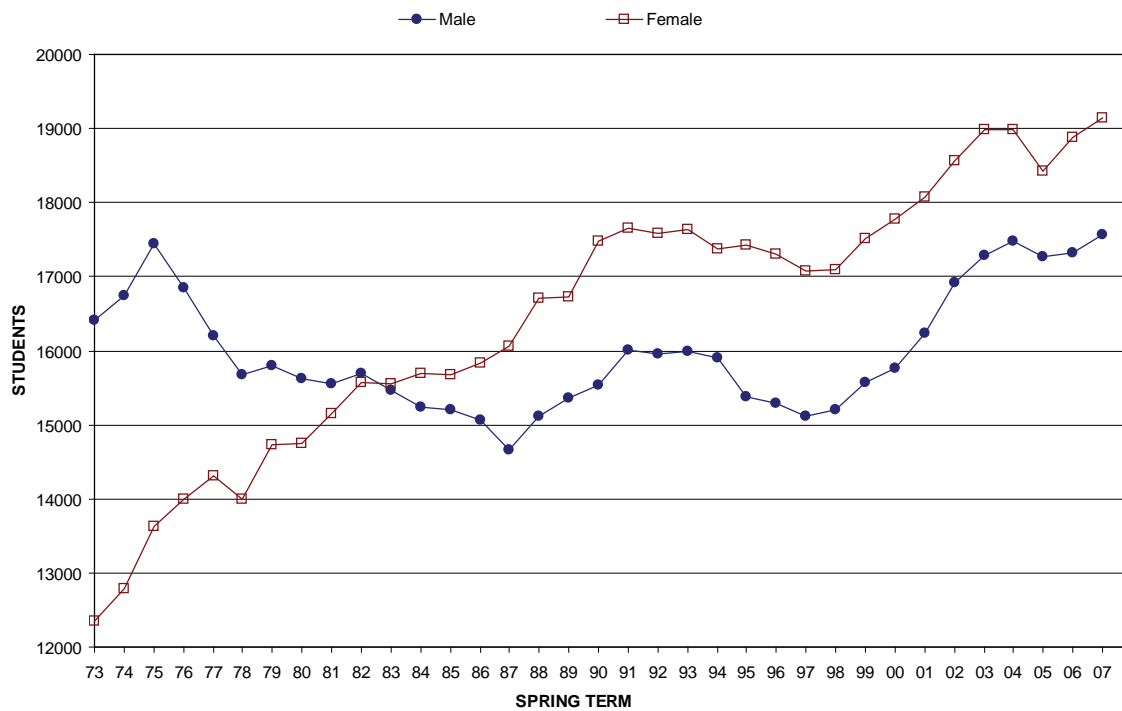


TABLE 9: ENROLLMENT AND SHARE BY GENDER

SPRING TERMS

Spring Term	Female Enrollment	Male Enrollment	Female Share	Male Share	Total
1985	15,682	15,208	50.8%	49.2%	30,890
1986	15,842	15,065	51.3%	48.7%	30,907
1987	16,055	14,665	52.3%	47.7%	30,720
1988	16,708	15,110	52.5%	47.5%	31,818
1989	16,724	15,369	52.1%	47.9%	32,093
1990	17,471	15,534	52.9%	47.1%	33,005
1991	17,648	16,002	52.4%	47.6%	33,650
1992	17,589	15,961	52.4%	47.6%	33,550
1993	17,637	15,994	52.4%	47.6%	33,631
1994	17,371	15,909	52.2%	47.8%	33,280
1995	17,420	15,382	53.1%	46.9%	32,802
1996	17,302	15,290	53.1%	46.9%	32,592
1997	17,080	15,115	53.1%	46.9%	32,195
1998	17,100	15,198	52.9%	47.1%	32,298
1999	17,508	15,570	52.9%	47.1%	33,078
2000	17,781	15,772	53.0%	47.0%	33,553
2001	18,075	16,228	52.7%	47.3%	34,303
2002	18,557	16,917	52.3%	47.7%	35,474
2003	18,991	17,290	52.3%	47.7%	36,281
2004	18,992	17,481	52.1%	47.9%	36,473
2005	18,426	17,267	51.6%	48.4%	35,693
2006	18,878	17,322	52.1%	47.9%	36,200
2007	19,139	17,559	52.2%	47.8%	36,698
Change from Last Year	261 + 1.4%	237 + 1.4%	+ 0.1%	- 0.1%	498 + 1.4%

Shaded areas indicate record high figures.

TABLE 10: ENROLLMENT BY GENDER AND STUDENT LEVEL

SPRING TERMS

Spring Terms	Undergraduate		Graduate		Professional		Nondegree		Total	
	Female	Male	Female	Male	Female	Male	Female	Male	Female	Male
1985	12,266	11,054	2,525	3,128	307	539	584	487	15,682	15,208
1986	12,261	10,919	2,612	3,091	318	540	651	515	15,842	15,065
1987	12,457	10,638	2,673	2,999	319	568	606	460	16,055	14,665
1988	12,993	10,969	2,738	3,113	325	564	652	464	16,708	15,110
1989	13,008	11,104	2,745	3,167	332	586	639	512	16,724	15,369
1990	13,552	11,359	2,775	3,116	336	530	808	529	17,471	15,534
1991	13,698	11,614	2,829	3,129	348	532	773	727	17,648	16,002
1992	13,567	11,611	2,888	3,205	370	485	764	660	17,589	15,961
1993	13,567	11,606	2,952	3,291	369	483	749	614	17,637	15,994
1994	13,122	11,428	3,007	3,340	391	470	851	671	17,371	15,909
1995	13,134	11,036	3,118	3,272	404	476	764	598	17,420	15,382
1996	13,052	10,918	3,077	3,211	405	470	768	691	17,302	15,290
1997	12,829	10,841	3,067	3,173	417	477	767	624	17,080	15,115
1998	12,982	11,049	3,062	3,105	414	486	642	558	17,100	15,198
1999	13,503	11,545	3,027	3,069	407	484	571	472	17,508	15,570
2000	13,798	11,825	2,992	2,957	375	501	616	489	17,781	15,772
2001	14,058	12,267	2,987	2,949	398	481	632	531	18,075	16,228
2002	14,544	12,964	2,991	3,057	419	455	603	441	18,557	16,917
2003	14,707	13,223	3,139	3,156	442	464	703	447	18,991	17,290
2004	14,651	13,394	3,300	3,253	431	476	610	358	18,992	17,481
2005	14,120	13,235	3,300	3,208	438	477	568	347	18,426	17,267
2006	14,183	13,177	3,364	3,237	440	508	891	400	18,878	17,322
2007	14,319	13,333	3,435	3,268	446	476	939	482	19,139	17,559
Change from Last Year	+ 136 + 1.0%	+ 156 + 1.2%	+ 71 + 2.2%	+ 31 + 1.0%	+ 6 + 1.4%	- 32 - 6.7%	+ 48 + 7.9%	+ 82 + 22.9%	+ 261 + 1.4%	+ 237 + 1.4%

Shaded areas indicate record high figures.

TABLE 11: SHARE BY GENDER AND STUDENT LEVEL
SPRING TERMS

Spring Terms	Undergraduate		Graduate		Professional		Nondegree		Total	
	Female	Male	Female	Male	Female	Male	Female	Male	Female	Male
1985	52.6%	47.4%	44.7%	55.3%	36.3%	63.7%	54.5%	45.5%	50.8%	49.2%
1986	52.9%	47.1%	45.8%	54.2%	37.1%	62.9%	55.8%	44.2%	51.3%	48.7%
1987	53.9%	46.1%	47.1%	52.9%	36.0%	64.0%	56.8%	43.2%	52.3%	47.7%
1988	54.2%	45.8%	46.8%	53.2%	36.6%	63.4%	58.4%	41.6%	52.5%	47.5%
1989	53.9%	46.1%	46.4%	53.6%	36.2%	63.8%	55.5%	44.5%	52.1%	47.9%
1990	54.4%	45.6%	47.1%	52.9%	38.8%	61.2%	60.4%	39.6%	52.9%	47.1%
1991	54.1%	45.9%	47.5%	52.5%	39.5%	60.5%	51.5%	48.5%	52.4%	47.6%
1992	53.9%	46.1%	47.4%	52.6%	43.3%	56.7%	53.7%	46.3%	52.4%	47.6%
1993	53.9%	46.1%	47.3%	52.7%	43.3%	56.7%	55.0%	45.0%	52.4%	47.6%
1994	53.5%	46.5%	47.4%	52.6%	45.4%	54.6%	55.9%	44.1%	52.2%	47.8%
1995	54.3%	45.7%	48.8%	51.2%	45.9%	54.1%	56.1%	43.9%	53.1%	46.9%
1996	54.5%	45.5%	48.9%	51.1%	46.3%	53.7%	52.6%	47.4%	53.1%	46.9%
1997	54.2%	45.8%	49.2%	50.8%	46.6%	53.4%	55.1%	44.9%	53.1%	46.9%
1998	54.0%	46.0%	49.7%	50.3%	46.0%	54.0%	53.5%	46.5%	52.9%	47.1%
1999	53.9%	46.1%	49.7%	50.3%	45.7%	54.3%	54.7%	45.3%	52.9%	47.1%
2000	53.9%	46.1%	50.3%	49.7%	42.8%	57.2%	55.7%	44.3%	53.0%	47.0%
2001	53.4%	46.6%	50.3%	49.7%	45.3%	54.7%	54.3%	45.7%	52.7%	47.3%
2002	52.9%	47.1%	49.5%	50.5%	47.9%	52.1%	57.8%	42.2%	52.3%	47.7%
2003	52.7%	47.3%	49.9%	50.1%	48.8%	51.2%	61.1%	38.9%	52.3%	47.7%
2004	52.2%	47.8%	50.4%	49.6%	47.5%	52.5%	63.0%	37.0%	52.1%	47.9%
2005	52.2%	47.8%	50.4%	49.6%	47.5%	43.8%	63.0%	37.0%	52.1%	47.9%
2006	51.8%	48.2%	51.0%	49.0%	46.4%	53.6%	69.0%	31.0%	52.1%	47.9%
2007	51.8%	48.2%	51.2%	48.8%	48.4%	51.6%	66.1%	33.9%	52.2%	47.8%

Shaded areas indicate record high figures.

ETHNIC GROUPS

The selection of an Ethnic group is self-chosen by students who attend Indiana University-Bloomington. In addition, they have the option to not report ethnic information and may request its removal from all records. Indiana University reports ethnic information to the U.S. Department of Education and complies with Title VI of the Civil Rights Act of 1964 and Title IX of the Education Amendment of 1972. Ethnic data have been collected at Indiana University-Bloomington since 1973.

The U.S. Minority share of enrollment has reached a new record-high share, at 10.4%. Each U.S. Minority group shows a record-high share, except for African Americans. The Non.U.S. share shows an increase from last year to 9.0% nearly reaching the record from 2004 of 9.1%. Below are two graphs that show enrollment shares by ethnic group.

FIGURE 5: SHARE OF ENROLLMENT BY ETHNIC GROUP
SPRING TERMS

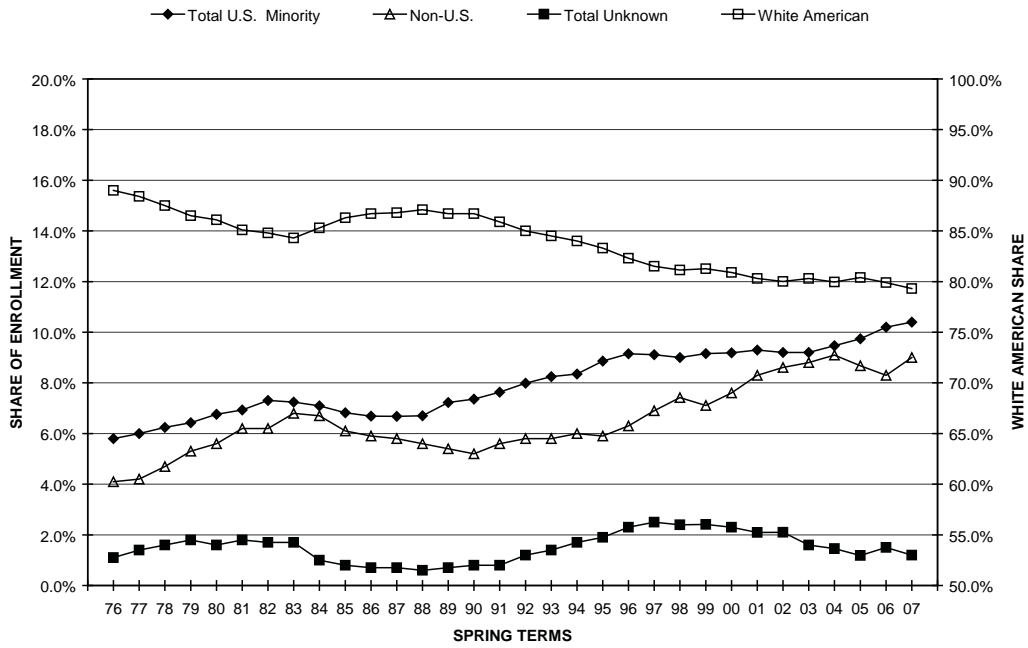


FIGURE 6: U.S. MINORITY SHARE OF ENROLLMENT
SPRING TERMS

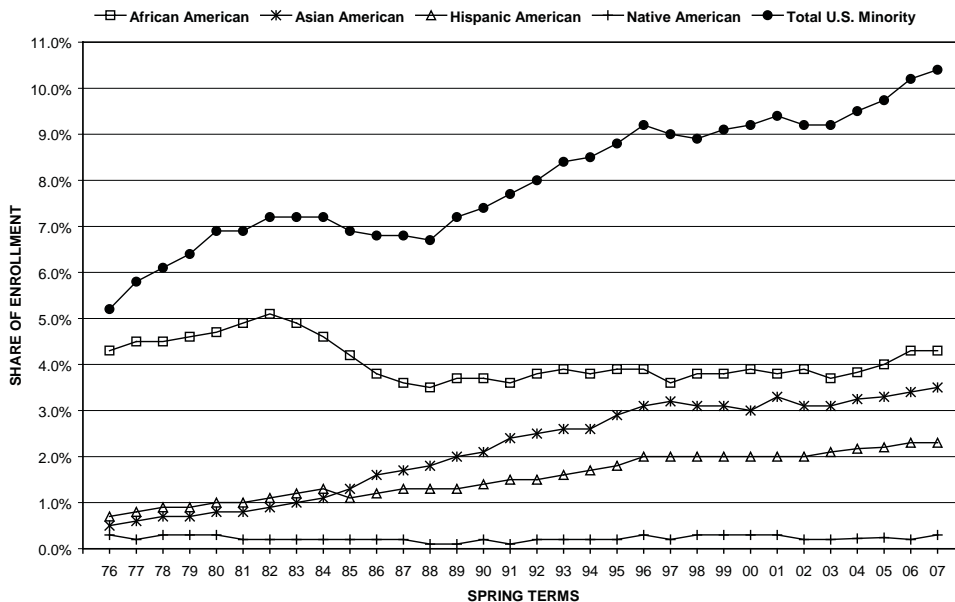


Table 12 shows enrollment by ethnic group from Spring 1976 to the present. All U.S. Minority groups show enrollment increases from last year and show record-high figures. Non U.S. enrollment also shows a record-high figure.

TABLE 12: ENROLLMENT BY ETHNIC GROUP
SPRING TERMS

Spring Term	African American	Asian American	Hispanic American	Native American	Total Minority	White American	Non-U.S.	Other American	Refused & Uncoded	Total Unknown	TOTAL
1976	1,320	167	227	88	1,802	27,664	1,263			341	31,070
1977	1,373	169	244	65	1,851	27,278	1,283			437	30,849
1978	1,360	198	266	80	1,904	26,692	1,426	Data	Data	474	30,496
1979	1,358	215	259	79	1,911	25,691	1,568	not	not	540	29,710
1980	1,440	252	294	80	2,066	26,290	1,699	available	available	490	30,545
1981	1,472	253	328	52	2,105	25,850	1,878			547	30,380
1982	1,575	270	347	52	2,244	26,035	1,913			508	30,700
1983	1,522	309	380	54	2,265	26,367	2,118			516	31,266
1984	1,413	351	380	54	2,198	26,444	2,074			295	31,011
1985	1,290	400	358	60	2,108	26,670	1,874			238	30,890
1986	1,173	482	369	45	2,069	26,801	1,815			222	30,907
1987	1,112	519	373	47	2,051	26,662	1,788			219	30,720
1988	1,113	581	398	39	2,131	27,713	1,770			205	31,819
1989	1,201	654	420	46	2,321	27,825	1,732			215	32,093
1990	1,218	700	462	48	2,428	28,601	1,727	186	63	249	33,005
1991	1,199	791	527	49	2,566	28,908	1,891	183	102	285	33,650
1992	1,280	847	502	53	2,682	28,529	1,950	211	178	389	33,550
1993	1,296	890	528	62	2,776	28,430	1,939	245	241	486	33,631
1994	1,280	869	560	71	2,780	27,951	1,981	269	299	568	33,280
1995	1,263	967	596	82	2,908	27,339	1,936	280	339	619	32,802
1996	1,257	1,003	646	83	2,989	26,821	2,039	311	432	743	32,592
1997	1,175	1,031	647	79	2,932	26,239	2,224	336	464	800	32,195
1998	1,186	997	641	89	2,913	26,207	2,397	351	430	781	32,298
1999	1,255	1,023	659	99	3,036	26,884	2,354	398	406	804	33,078
2000	1,306	1,011	686	96	3,099	27,141	2,544	425	344	769	33,553
2001	1,311	1,117	676	93	3,197	27,533	2,852	441	280	721	34,303
2002	1,371	1,113	709	81	3,274	28,388	3,056	474	282	756	35,474
2003	1,358	1,139	775	66	3,338	29,148	3,201	407	187	594	36,281
2004	1,398	1,186	794	83	3,461	29,167	3,304	345	196	541	36,473
2005	1,433	1,174	785	85	3,477	28,700	3,096	0	422	422	35,695
2006	1,568	1,242	820	82	3,712	28,922	3,007	195	364	559	36,200
2007	1,584	1,293	854	102	3,833	29,116	3,318	156	275	431	36,698

Notes:

Total Minority includes African American, Asian American, Hispanic American, and Native American.

Total Unknown includes the categories of Other American and Refused and Uncoded.

Shaded areas represent record high figures.

Table 13 shows the shares of enrollment by ethnic group from Spring 1976 to the present.

TABLE 13: SHARE OF ENROLLMENT BY ETHNIC GROUP
SPRING TERMS

Spring Term	African American	Asian American	Hispanic American	Native American	Total Minority	White American	Non-U.S.	Other American	Refused & Uncoded	Total Unknown	TOTAL
1976	4.2%	0.5%	0.7%	0.3%	5.8%	89.0%	4.1%	n/a	n/a	1.1%	100.0%
1977	4.5%	0.5%	0.8%	0.2%	6.0%	88.4%	4.2%	n/a	n/a	1.4%	100.0%
1978	4.5%	0.6%	0.9%	0.3%	6.2%	87.5%	4.7%	n/a	n/a	1.6%	100.0%
1979	4.6%	0.7%	0.9%	0.3%	6.4%	86.5%	5.3%	n/a	n/a	1.8%	100.0%
1980	4.7%	0.8%	1.0%	0.3%	6.8%	86.1%	5.6%	n/a	n/a	1.6%	100.0%
1981	4.8%	0.8%	1.1%	0.2%	6.9%	85.1%	6.2%	n/a	n/a	1.8%	100.0%
1982	5.1%	0.9%	1.1%	0.2%	7.3%	84.8%	6.2%	n/a	n/a	1.7%	100.0%
1983	4.9%	1.0%	1.2%	0.2%	7.2%	84.3%	6.8%	n/a	n/a	1.7%	100.0%
1984	4.6%	1.1%	1.2%	0.2%	7.1%	85.3%	6.7%	n/a	n/a	1.0%	100.0%
1985	4.2%	1.3%	1.2%	0.2%	6.8%	86.3%	6.1%	n/a	n/a	0.8%	100.0%
1986	3.8%	1.6%	1.2%	0.1%	6.7%	86.7%	5.9%	n/a	n/a	0.7%	100.0%
1987	3.6%	1.7%	1.2%	0.2%	6.7%	86.8%	5.8%	n/a	n/a	0.7%	100.0%
1988	3.5%	1.8%	1.3%	0.1%	6.7%	87.1%	5.6%	n/a	n/a	0.6%	100.0%
1989	3.7%	2.0%	1.3%	0.1%	7.2%	86.7%	5.4%	n/a	n/a	0.7%	100.0%
1990	3.7%	2.1%	1.4%	0.1%	7.4%	86.7%	5.2%	0.6%	0.2%	0.8%	100.0%
1991	3.6%	2.4%	1.6%	0.1%	7.6%	85.9%	5.6%	0.5%	0.3%	0.8%	100.0%
1992	3.8%	2.5%	1.5%	0.2%	8.0%	85.0%	5.8%	0.6%	0.5%	1.2%	100.0%
1993	3.9%	2.6%	1.6%	0.2%	8.3%	84.5%	5.8%	0.7%	0.7%	1.4%	100.0%
1994	3.8%	2.6%	1.7%	0.2%	8.4%	84.0%	6.0%	0.8%	0.9%	1.7%	100.0%
1995	3.9%	2.9%	1.8%	0.2%	8.9%	83.3%	5.9%	0.9%	1.0%	1.9%	100.0%
1996	3.9%	3.1%	2.0%	0.3%	9.2%	82.3%	6.3%	1.0%	1.3%	2.3%	100.0%
1997	3.6%	3.2%	2.0%	0.2%	9.1%	81.5%	6.9%	1.0%	1.4%	2.5%	100.0%
1998	3.7%	3.1%	2.0%	0.3%	9.0%	81.1%	7.4%	1.1%	1.3%	2.4%	100.0%
1999	3.8%	3.1%	2.0%	0.3%	9.2%	81.3%	7.1%	1.2%	1.2%	2.4%	100.0%
2000	3.9%	3.0%	2.0%	0.3%	9.2%	80.9%	7.6%	1.3%	1.0%	2.3%	100.0%
2001	3.8%	3.3%	2.0%	0.3%	9.3%	80.3%	8.3%	1.3%	0.8%	2.1%	100.0%
2002	3.9%	3.1%	2.0%	0.2%	9.2%	80.0%	8.6%	1.3%	0.8%	2.1%	100.0%
2003	3.7%	3.1%	2.1%	0.2%	9.2%	80.3%	8.8%	1.1%	0.5%	1.6%	100.0%
2004	3.8%	3.3%	2.2%	0.2%	9.5%	80.0%	9.1%	0.9%	0.5%	1.5%	100.0%
2005	4.0%	3.3%	2.2%	0.2%	9.7%	80.4%	8.7%	0.0%	1.2%	1.2%	100.0%
2006	4.3%	3.4%	2.3%	0.2%	10.3%	79.9%	8.3%	0.5%	1.0%	1.5%	100.0%
2007	4.3%	3.5%	2.3%	0.3%	10.4%	79.3%	9.0%	0.4%	0.7%	1.2%	100.0%

Notes:

Total Minority includes African American, Asian American, Hispanic American, and Native American.

Total Unknown includes the categories of Other American and Refused and Uncoded.

Shaded areas represent record high figures.

TABLE 14: COMPARISON OF ENROLLMENT AND SHARE BY ETHNIC GROUPS, CLASS AND LEVEL
 SPRING TERMS 2006 AND 2007

	AFRICAN AMERICAN						ASIAN AMERICAN					
	ENROLLMENT				SHARE OF CLASS		ENROLLMENT				SHARE OF CLASS	
	Last Year	This Year	Change Number	Change Percent	Last Year	This Year	Last Year	This Year	Change Number	Change Percent	Last Year	This Year
Freshman	377	324	- 53	- 14.1%	6.2%	5.2%	197	223	+ 26	+ 13.2%	3.3%	3.6%
Sophomore	301	343	+ 42	+ 14.0%	4.9%	5.0%	181	228	+ 47	+ 26.0%	2.9%	3.3%
Junior	229	258	+ 29	+ 12.7%	3.7%	4.4%	220	178	- 42	- 19.1%	3.6%	3.1%
Senior	311	312	+ 1	+ 0.3%	3.5%	3.5%	334	367	+ 33	+ 9.9%	3.7%	4.2%
Undergraduate Total	1,218	1,237	+ 19	+ 1.6%	4.5%	4.5%	932	996	+ 64	+ 6.9%	3.4%	3.6%
Masters	161	135	- 26	- 16.1%	4.8%	4.0%	122	128	+ 6	+ 4.9%	3.7%	3.8%
Doctoral	97	113	+ 16	+ 16.5%	3.0%	3.4%	108	102	- 6	- 5.6%	3.3%	3.0%
Graduate Total	258	248	- 10	- 3.9%	3.9%	3.7%	230	230	0	0.0%	3.5%	3.4%
Professional Total	50	51	+ 1	+ 2.0%	5.3%	5.5%	53	46	- 7	- 13.2%	5.6%	5.0%
Nondegree Total	42	48	+ 6	+ 14.3%	3.3%	3.4%	27	21	- 6	- 22.2%	2.1%	1.5%
CAMPUS TOTAL	1,568	1,584	+ 16	+ 1.0%	4.3%	4.3%	1,242	1,293	+ 51	+ 4.1%	3.4%	3.5%
	HISPANIC AMERICAN						NATIVE AMERICAN					
	ENROLLMENT				SHARE OF CLASS		ENROLLMENT				SHARE OF CLASS	
	Last Year	This Year	Change Number	Change Percent	Last Year	This Year	Last Year	This Year	Change Number	Change Percent	Last Year	This Year
Freshman	125	140	+ 15	+ 12.0%	2.1%	2.3%	17	21	+ 4	+ 23.5%	0.3%	0.3%
Sophomore	128	149	+ 21	+ 16.4%	2.1%	2.2%	12	19	+ 7	+ 58.3%	0.2%	0.3%
Junior	144	123	- 21	- 14.6%	2.3%	2.1%	13	9	- 4	- 30.8%	0.2%	0.2%
Senior	194	196	+ 2	+ 1.0%	2.2%	2.2%	14	16	+ 2	+ 14.3%	0.2%	0.2%
Undergraduate Total	591	608	+ 17	+ 2.9%	2.2%	2.2%	56	65	+ 9	+ 16.1%	0.2%	0.2%
Masters	85	77	- 8	- 9.4%	2.5%	2.3%	11	13	+ 2	+ 18.2%	0.3%	0.4%
Doctoral	93	107	+ 14	+ 15.1%	2.9%	3.2%	14	19	+ 5	+ 35.7%	0.4%	0.6%
Graduate Total	178	184	+ 6	+ 3.4%	2.7%	2.7%	25	32	+ 7	+ 28.0%	0.4%	0.5%
Professional Total	27	30	+ 3	+ 11.1%	2.8%	3.3%	0	0	0	---	0.0%	0.0%
Nondegree Total	24	32	+ 8	+ 33.3%	1.9%	2.3%	1	5	+ 4	+ 400.0%	0.1%	0.4%
CAMPUS TOTAL	820	854	+ 34	+ 4.1%	2.3%	2.3%	82	102	+ 20	+ 24.4%	0.2%	0.3%
	WHITE AMERICAN						OTHER AMERICAN					
	ENROLLMENT				SHARE OF CLASS		ENROLLMENT				SHARE OF CLASS	
	Last Year	This Year	Change Number	Change Percent	Last Year	This Year	Last Year	This Year	Change Number	Change Percent	Last Year	This Year
Freshman	4,992	5,195	+ 203	+ 4.1%	82.6%	83.8%	33	21	- 12	- 36.4%	0.5%	0.3%
Sophomore	5,283	5,704	+ 421	+ 8.0%	85.3%	83.7%	33	35	+ 2	+ 6.1%	0.5%	0.5%
Junior	5,245	4,960	- 285	- 5.4%	85.2%	85.1%	36	28	- 8	- 22.2%	0.6%	0.5%
Senior	7,594	7,393	- 201	- 2.6%	84.7%	83.9%	61	51	- 10	- 16.4%	0.7%	0.6%
Undergraduate Total	23,114	23,252	+ 138	+ 0.6%	84.5%	84.1%	163	135	- 28	- 17.2%	0.6%	0.5%
Masters	2,227	2,174	- 53	- 2.4%	66.7%	65.1%	13	6	- 7	- 53.8%	0.4%	0.2%
Doctoral	1,877	1,942	+ 65	+ 3.5%	57.5%	57.7%	6	4	- 2	- 33.3%	0.2%	0.1%
Graduate Total	4,104	4,116	+ 12	+ 0.3%	62.2%	61.4%	19	10	- 9	- 47.4%	0.3%	0.1%
Professional Total	785	763	- 22	- 2.8%	82.8%	82.8%	8	5	- 3	- 37.5%	0.8%	0.5%
Nondegree Total	919	985	+ 66	+ 7.2%	71.2%	69.3%	5	6	+ 1	+ 20.0%	0.4%	0.4%
CAMPUS TOTAL	28,922	29,116	+ 194	+ 0.7%	79.9%	79.3%	195	156	- 39	- 20.0%	0.5%	0.4%
	NON. U.S.						Refused and Uncoded					
	ENROLLMENT				SHARE OF CLASS		ENROLLMENT				SHARE OF CLASS	
	Last Year	This Year	Change Number	Change Percent	Last Year	This Year	Last Year	This Year	Change Number	Change Percent	Last Year	This Year
Freshman	237	229	- 8	- 3.4%	3.9%	3.7%	67	45	- 22	- 32.8%	1.1%	0.7%
Sophomore	196	279	+ 83	+ 42.3%	3.2%	4.1%	56	56	0	0.0%	0.9%	0.8%
Junior	228	226	- 2	- 0.9%	3.7%	3.9%	41	47	+ 6	+ 14.6%	0.7%	0.8%
Senior	435	438	+ 3	+ 0.7%	4.9%	5.0%	26	39	+ 13	+ 50.0%	0.3%	0.4%
Undergraduate Total	1,096	1,172	+ 76	+ 6.9%	4.0%	4.2%	190	187	- 3	- 1.6%	0.7%	0.7%
Masters	685	777	+ 92	+ 13.4%	20.5%	23.3%	35	27	- 8	- 22.9%	1.0%	0.8%
Doctoral	1,038	1,060	+ 22	+ 2.1%	31.8%	31.5%	29	19	- 10	- 34.5%	0.9%	0.6%
Graduate Total	1,723	1,837	+ 114	+ 6.6%	26.1%	27.4%	64	46	- 18	- 28.1%	1.0%	0.7%
Professional Total	17	18	+ 1	+ 5.9%	1.8%	2.0%	8	9	+ 1	+ 12.5%	0.8%	1.0%
Nondegree Total	171	291	+ 120	+ 70.2%	13.2%	20.5%	102	33	- 69	- 67.6%	7.9%	2.3%
CAMPUS TOTAL	3,007	3,318	+ 311	+ 10.3%	8.3%	9.0%	364	275	- 89	- 24.5%	1.0%	0.7%
	U.S. MINORITY						TOTAL ENROLLMENT					
	ENROLLMENT				SHARE OF CLASS		ENROLLMENT				SHARE OF CLASS	
	Last Year	This Year	Change Number	Change Percent	Last Year	This Year	Last Year	This Year	Change Number	Change Percent	Last Year	This Year
Freshman	716	708	- 8	- 1.1%	11.8%	11.4%	6,045	6,198	+ 153	+ 2.5%	100.0%	100.0%
Sophomore	622	739	+ 117	+ 18.8%	10.0%	10.8%	6,190	6,813	+ 623	+ 10.1%	100.0%	100.0%
Junior	606	568	- 38	- 6.3%	9.8%	9.7%	6,156	5,829	- 327	- 5.3%	100.0%	100.0%
Senior	853	891	+ 38	+ 4.5%	9.5%	10.1%	8,969	8,812	- 157	- 1.8%	100.0%	100.0%
Undergraduate Total	2,797	2,906	+ 109	+ 3.9%	10.2%	10.5%	27,360	27,652	+ 292	+ 1.1%	100.0%	100.0%
Masters	379	353	- 26	- 6.9%	11.4%	10.6%	3,339	3,337	- 2	- 0.1%	100.0%	100.0%
Doctoral	312	341	+ 29	+ 9.3%	9.6%	10.1%	3,262	3,366	+ 104	+ 3.2%	100.0%	100.0%
Graduate Total	691	694	+ 3	+ 0.4%	10.5%	10.4%	6,601	6,703	+ 102	+ 1.5%	100.0%	100.0%
Professional Total	130	127	- 3	- 2.3%	13.7%	13.8%	948	922	- 26	- 2.7%	100.0%	100.0%
Nondegree Total	94	106	+ 12	+ 12.8%	7.3%	7.5%	1,291	1,421	+ 130	+ 10.1%	100.0%	100.0%
CAMPUS TOTAL	3,712	3,833	+ 121	+ 3.3%	10.3%	10.4%	36,200	36,698	+ 498	+ 1.4%	100.0%	100.0%

RESIDENCE CLASSIFICATION

Both the total number of students and the share of the student population classified as nonresident for fee-paying purposes are at record highs this year (since data by class first became available Spring Term 1982) with 15,238 nonresident students (up 641 from last year) and 41.5% of the campus population being classified as nonresident (up 1.2 percentage points from last year). The shares of nonresident undergraduate and professional students are both at record highs as well (34.2% and 55.9%, respectively). Additionally, nonresident enrollments are at record highs this year for undergraduate (9,461), graduate (4,841) and professional (515) students. The greatest increases are shown at the undergraduate level (+447 students, +5.0% from last year), followed by graduate students (+142 students, +3.0%), then professional students (+5 students, +1.0%). The increase in nonresident undergraduates is due to increases in the numbers of freshmen (+368) and sophomores (+285); the numbers of nonresident juniors and seniors have decreased by 80 and 126, respectively.

The number of resident students has decreased from last year to 21,460 students (-143 students) this year, and the resident share of enrollment has decreased to 58.5% this year, the lowest share since data were made available Spring Term 1982. The resident shares of undergraduate and professional students are both at record lows this year as well (65.8% and 44.1%, respectively). Table 15 shows resident and nonresident enrollment by level and class for this spring and last spring.

TABLE 15: RESIDENT AND NONRESIDENT ENROLLMENT BY LEVEL AND CLASS
SPRING TERMS 2006 AND 2007

Class/Level	Last Year		This Year		Change			
	Resident	Nonresident	Resident	Nonresident	Resident		Nonresident	
					Number	Percent	Number	Percent
Freshman	4,014	2,031	3,799	2,399	- 215	- 5.4%	+ 368	+ 18.1%
Sophomore	4,237	1,953	4,575	2,238	+ 338	+ 8.0%	+ 285	+ 14.6%
Junior	4,188	1,968	3,941	1,888	- 247	- 5.9%	- 80	- 4.1%
Senior	5,907	3,062	5,876	2,936	- 31	- 0.5%	- 126	- 4.1%
Undergraduate	18,346	9,014	18,191	9,461	- 155	- 0.8%	+ 447	+ 5.0%
Graduate	1,902	4,699	1,862	4,841	- 40	- 2.1%	+ 142	+ 3.0%
Professional	438	510	407	515	- 31	- 7.1%	+ 5	+ 1.0%
Nondegree	917	374	1,000	421	+ 83	+ 9.1%	+ 47	+ 12.6%
TOTAL	21,603	14,597	21,460	15,238	- 143	- 0.7%	+ 641	+ 4.4%

Tables 16 and 17 are historical tables showing enrollment and share of enrollment, respectively, by level and residency from Spring 1982 to the present.

TABLE 16: ENROLLMENT BY RESIDENCE CLASSIFICATION AND STUDENT LEVEL
SPRING TERMS

Spring	Undergraduate		Graduate		Professional		Nondegree		Total	
	Resident	Nonresident	Resident	Nonresident	Resident	Nonresident	Resident	Nonresident	Resident	Nonresident
1982	16,701	5,847	2,285	3,813	628	271	782	366	20,397	10,297
1983	16,732	6,351	2,147	3,878	629	276	904	338	20,412	10,843
1984	16,651	6,340	2,052	3,815	623	246	989	294	20,315	10,695
1985	16,823	6,493	1,989	3,698	600	249	795	284	20,207	10,724
1986	16,733	6,447	1,971	3,732	594	264	876	290	20,174	10,733
1987	16,566	6,529	1,933	3,739	606	281	784	282	19,889	10,831
1988	17,083	6,879	1,959	3,892	594	295	828	289	20,464	11,355
1989	17,365	6,747	1,925	3,987	579	339	836	315	20,705	11,388
1990	17,795	7,116	1,844	4,047	524	342	893	444	21,056	11,949
1991	18,209	7,103	1,815	4,143	536	344	1,007	493	21,567	12,083
1992	18,264	6,914	1,783	4,310	508	347	933	491	21,488	12,062
1993	18,273	6,900	1,762	4,481	497	355	897	465	21,429	12,201
1994	18,052	6,498	1,833	4,514	512	349	975	547	21,372	11,908
1995	17,734	6,436	1,812	4,578	516	364	844	518	20,906	11,896
1996	17,656	6,314	1,734	4,554	516	359	864	595	20,770	11,822
1997	17,385	6,285	1,634	4,606	520	374	784	607	20,323	11,872
1998	17,519	6,512	1,651	4,516	496	404	724	476	20,390	11,908
1999	18,174	6,874	1,669	4,427	495	396	697	346	21,035	12,043
2000	18,341	7,282	1,637	4,312	464	412	706	399	21,148	12,405
2001	18,582	7,743	1,597	4,339	482	397	703	460	21,364	12,939
2002	19,026	8,482	1,625	4,423	473	401	649	395	21,773	13,701
2003	18,957	8,973	1,736	4,559	477	429	816	334	21,986	14,295
2004	18,821	9,224	1,767	4,786	463	444	656	312	21,707	14,766
2005	18,328	9,027	1,859	4,649	453	462	657	260	21,297	14,398
2006	18,346	9,014	1,902	4,699	438	510	917	374	21,603	14,597
2007	18,191	9,461	1,862	4,841	407	515	1,000	421	21,460	15,238

TABLE 17: SHARE OF ENROLLMENT BY RESIDENCE CLASSIFICATION AND STUDENT LEVEL
SPRING TERMS

Spring	Undergraduate		Graduate		Professional		Nondegree		Total	
	Resident	Nonresident	Resident	Nonresident	Resident	Nonresident	Resident	Nonresident	Resident	Nonresident
1982	74.1%	25.9%	37.5%	62.5%	69.9%	30.1%	68.1%	31.9%	66.5%	33.5%
1983	72.5%	27.5%	35.6%	64.4%	69.5%	30.5%	72.8%	27.2%	65.3%	34.7%
1984	72.4%	27.6%	35.0%	65.0%	71.7%	28.3%	77.1%	22.9%	65.5%	34.5%
1985	72.2%	27.8%	35.0%	65.0%	70.7%	29.3%	73.7%	26.3%	65.3%	34.7%
1986	72.2%	27.8%	34.6%	65.4%	69.2%	30.8%	75.1%	24.9%	65.3%	34.7%
1987	71.7%	28.3%	34.1%	65.9%	68.3%	31.7%	73.5%	26.5%	64.7%	35.3%
1988	71.3%	28.7%	33.5%	66.5%	66.8%	33.2%	74.1%	25.9%	64.3%	35.7%
1989	72.0%	28.0%	32.6%	67.4%	63.1%	36.9%	72.6%	27.4%	64.5%	35.5%
1990	71.4%	28.6%	31.3%	68.7%	60.5%	39.5%	66.8%	33.2%	63.8%	36.2%
1991	71.9%	28.1%	30.5%	69.5%	60.9%	39.1%	67.1%	32.9%	64.1%	35.9%
1992	72.5%	27.5%	29.3%	70.7%	59.4%	40.6%	65.5%	34.5%	64.0%	36.0%
1993	72.6%	27.4%	28.2%	71.8%	58.3%	41.7%	65.9%	34.1%	63.7%	36.3%
1994	73.5%	26.5%	28.9%	71.1%	59.5%	40.5%	64.1%	35.9%	64.2%	35.8%
1995	73.4%	26.6%	28.4%	71.6%	58.6%	41.4%	62.0%	38.0%	63.7%	36.3%
1996	73.7%	26.3%	27.6%	72.4%	59.0%	41.0%	59.2%	40.8%	63.7%	36.3%
1997	73.4%	26.6%	26.2%	73.8%	58.2%	41.8%	56.4%	43.6%	63.1%	36.9%
1998	72.9%	27.1%	26.8%	73.2%	55.1%	44.9%	60.3%	39.7%	63.1%	36.9%
1999	72.6%	27.4%	27.4%	72.6%	55.6%	44.4%	66.8%	33.2%	63.6%	36.4%
2000	71.6%	28.4%	27.5%	72.5%	53.0%	47.0%	63.9%	36.1%	63.0%	37.0%
2001	70.6%	29.4%	26.9%	73.1%	54.8%	45.2%	60.4%	39.6%	62.3%	37.7%
2002	69.2%	30.8%	26.9%	73.1%	54.1%	45.9%	62.2%	37.8%	61.4%	38.6%
2003	67.9%	32.1%	27.6%	72.4%	52.6%	47.4%	71.0%	29.0%	60.6%	39.4%
2004	67.1%	32.9%	27.0%	73.0%	51.0%	49.0%	67.8%	32.2%	59.5%	40.5%
2005	67.0%	33.0%	28.6%	71.4%	49.5%	50.5%	71.6%	28.4%	59.7%	40.3%
2006	67.1%	32.9%	28.8%	71.2%	46.2%	53.8%	71.0%	29.0%	59.7%	40.3%
2007	65.8%	34.2%	27.8%	72.2%	44.1%	55.9%	70.4%	29.6%	58.5%	41.5%

Note: Shaded areas indicate record highs.

The total number of credit hours taken by nonresident students has increased by 7,856.5 hours (+4.1%) due mainly to the increase in undergraduate nonresident credit hours by 6,702.0 hours (+5.1%). The increases in nonresident shares of credit hours approximate (within 0.1 percentage point) the increases in shares of nonresident enrollment at the undergraduate, professional and campus levels. At the graduate level, the increase in nonresident share of enrollment is one full percentage point, yet the increase in graduate nonresident share of credit hours has increased only 0.2 percentage points. On the other hand, the nonresident share of nondegree enrollment has increased by 0.6 percentage points, yet the share of credit hours has increased by 2.7 percentage points. Table 18 shows the number and share of credit hours by residency for this spring and last spring.

TABLE 18: CREDIT HOURS AND SHARE BY STUDENT LEVEL AND RESIDENCY
 SPRING TERMS 2006 AND 2007

Level	Residents Last Year	Residents This Year	Change*	Nonresidents Last Year	Nonresidents This Year	Change*
Undergraduate	262,530.5	261,730.0	- 800.5	131,854.5	138,556.5	+ 6,702.0
Percent of Level	66.6%	65.4%	- 0.3%	33.4%	34.6%	+ 5.1%
Graduate	15,345.5	15,547.0	+ 201.5	42,581.5	43,642.5	+ 1,061.0
Percent of Level	26.5%	26.3%	+ 1.3%	73.5%	73.7%	+ 2.5%
Professional	6,666.0	6,070.5	- 595.5	7,770.0	7,738.5	- 31.5
Percent of Level	46.2%	44.0%	- 8.9%	53.8%	56.0%	- 0.4%
Nondegree	4,732.5	3,823.0	- 909.5	1,820.5	1,675.5	- 145.0
Percent of Level	72.2%	69.5%	- 19.2%	27.8%	30.5%	- 8.0%
TOTAL	289,274.5	287,170.5	- 2,104.0	184,026.5	191,613.0	+ 7,586.5
Percent of Level	61.1%	60.0%	- 0.7%	38.9%	40.0%	+ 4.1%

* The percent change shown in this column represents the percent increase/decrease in enrollment from last year to this year, not a percentage point increase/decrease in share of enrollment.

STUDENT SCHOOL ENROLLMENT

HEADCOUNT BY STUDENT SCHOOL

Four schools show record enrollments this year: Health Physical Education and Recreation (HPER), Journalism, Optometry, and School of Public and Environmental Affairs (SPEA). Other schools showing enrollment gains are Business, Graduate School, Music, Nursing, Social Work, and University Division. Headcounts by student school for this year and last year are shown in Table 19.

Beginning Spring 2005, students can be enrolled in multiple careers (e.g., MBA/JD students are in graduate and law careers). This year, there are 18 MBA/JD students. For all school reports, students are counted one time under each school and career, so that both Business and Law will get credit for these 18 dual career students. As a result, the campus total by school will not match the unique student headcount reported in the previous section "Campus Level Enrollment." Last year, there were 12 MBA/JD students.

Two schools show decreases from their record figures reported last year: Informatics and Law. Other schools showing enrollment losses this year are Arts and Sciences, Continuing Studies, Education, Labor Studies, and Library and Information Sciences (SLIS). Some of the fluctuations in school enrollments may be due to the processing cycles of admitting majors of each school, which are no longer dependent on the University Division certification process.

TABLE 19: ENROLLMENT BY STUDENT CLASS AND LEVEL WITHIN STUDENT SCHOOL
SPRING TERMS

Student School	Spring Terms		Change from 2006 to 2007	
	2006	2007	Number	Percent
ARTS AND SCIENCES				
Freshman	114	78	- 36	- 31.6%
Sophomore	1,566	1,669	+ 103	+ 6.6%
Junior	2,510	2,397	- 113	- 4.5%
Senior	3,779	3,642	- 137	- 3.6%
Undergraduate	7,969	7,786	- 183	- 2.3%
Masters	0	0	0	---
Doctorate	10	24	+ 14	+ 140.0%
Graduate	10	24	+ 14	+ 140.0%
Nondegree	204	255	+ 51	+ 25.0%
Total	8,183	8,065	- 118	- 1.4%
BUSINESS				
Freshman	202	285	+ 83	+ 41.1%
Sophomore	802	873	+ 71	+ 8.9%
Junior	1,039	931	- 108	- 10.4%
Senior	1,636	1,757	+ 121	+ 7.4%
Undergraduate	3,679	3,846	+ 167	+ 4.5%
Masters	615	649	+ 34	+ 5.5%
Graduate	615	649	+ 34	+ 5.5%
Nondegree	32	30	- 2	- 6.3%
Total	4,326	4,525	+ 199	+ 4.6%
CONTINUING STUDIES				
Freshman	65	59	- 6	- 9.2%
Sophomore	122	114	- 8	- 6.6%
Junior	173	153	- 20	- 11.6%
Senior	343	332	- 11	- 3.2%
Undergraduate	703	658	- 45	- 6.4%
Nondegree	191	197	+ 6	+ 3.1%
Total	894	855	- 39	- 4.4%
EDUCATION				
Sophomore	95	2	- 93	- 97.9%
Junior	338	184	- 154	- 45.6%
Senior	791	651	- 140	- 17.7%
Undergraduate	1,224	837	- 387	- 31.6%
Masters	471	430	- 41	- 8.7%
Doctorate	115	108	- 7	- 6.1%
Graduate	586	538	- 48	- 8.2%
Nondegree	642	656	+ 14	+ 2.2%
Total	2,452	2,031	- 421	- 17.2%

TABLE 19: ENROLLMENT BY STUDENT CLASS AND LEVEL WITHIN STUDENT SCHOOL (CONTINUED)
 SPRING TERMS

Student School			Change from 2006 to 2007	
	2006	2007	Number	Percent
GRADUATE SCHOOL				
Masters	907	870	- 37	- 4.1%
Doctorate	2,802	2,888	+ 86	+ 3.1%
Graduate	3,709	3,758	+ 49	+ 1.3%
Nondegree	131	121	- 10	- 7.6%
Total	3,840	3,879	+ 39	+ 1.0%
HPER				
Freshman	4	5	+ 1	+ 25.0%
Sophomore	289	354	+ 65	+ 22.5%
Junior	538	520	- 18	- 3.3%
Senior	822	892	+ 70	+ 8.5%
Undergraduate	1,653	1,771	+ 118	+ 7.1%
Masters	213	207	- 6	- 2.8%
Doctorate	0	0	0	---
Graduate	213	207	- 6	- 2.8%
Nondegree	17	22	+ 5	+ 29.4%
Total	1,883	2,000	+ 117	+ 6.2%
INFORMATICS				
Freshman	2	9	+ 7	+ 350.0%
Sophomore	43	44	+ 1	+ 2.3%
Junior	95	93	- 2	- 2.1%
Senior	191	158	- 33	- 17.3%
Undergraduate	331	304	- 27	- 8.2%
Graduate	72	87	+ 15	+ 20.8%
Nondegree	2	0	- 2	- 100.0%
Total	405	391	- 14	- 3.5%
JOURNALISM				
Freshman	0	24	+ 24	---
Sophomore	90	192	+ 102	+ 113.3%
Junior	205	182	- 23	- 11.2%
Senior	317	301	- 16	- 5.0%
Undergraduate	612	699	+ 87	+ 14.2%
Total	612	699	+ 87	+ 14.2%
LABOR STUDIES				
Freshman	0	1	+ 1	---
Sophomore	0	1	+ 1	---
Junior	2	1	- 1	- 50.0%
Senior	6	4	- 2	- 33.3%
Undergraduate	8	7	- 1	- 12.5%
Total	8	7	- 1	- 12.5%
LAW				
Masters	64	49	- 15	- 23.4%
Doctorate	20	30	+ 10	+ 50.0%
Graduate	84	79	- 5	- 6.0%
First Year	200	205	+ 5	+ 2.5%
Second Year*	224	207	- 17	- 7.6%
Third Year*	211	196	- 15	- 7.1%
Professional	635	608	- 27	- 4.3%
Nondegree	2	5	+ 3	+ 150.0%
Total	721	692	- 29	- 4.0%
SLIS				
Masters	279	268	- 11	- 3.9%
Doctorate	9	3	- 6	- 66.7%
Graduate	288	271	- 17	- 5.9%
Nondegree	18	15	- 3	- 16.7%
Total	306	286	- 20	- 6.5%
MUSIC				
Freshman	114	107	- 7	- 6.1%
Sophomore	158	125	- 33	- 20.9%
Junior	125	146	+ 21	+ 16.8%
Senior	328	317	- 11	- 3.4%
Undergraduate	725	695	- 30	- 4.1%
Masters	423	463	+ 40	+ 9.5%
Doctorate	306	313	+ 7	+ 2.3%
Graduate	729	776	+ 47	+ 6.4%
Nondegree	7	13	+ 6	+ 85.7%
Total	1,461	1,484	+ 23	+ 1.6%

TABLE 19: ENROLLMENT BY STUDENT CLASS AND LEVEL WITHIN STUDENT SCHOOL (CONTINUED)
 SPRING TERMS

Student School			Change from 2006 to 2007	
	2006	2007	Number	Percent
NURSING				
Freshman	0	0	0	---
Sophomore	17	25	+ 8	+ 47.1%
Junior	47	30	- 17	- 36.2%
Senior	82	94	+ 12	+ 14.6%
Undergraduate	146	149	+ 3	+ 2.1%
Graduate	0	0	0	---
Nondegree	0	0	0	---
Total	146	149	+ 3	+ 2.1%
OPTOMETRY				
Sophomore	8	8	0	0.0%
Senior	0	0	0	---
Undergraduate	8	8	0	0.0%
First Year	80	74	- 6	- 7.5%
Second Year	76	86	+ 10	+ 13.2%
Third Year	77	70	- 7	- 9.1%
Fourth Year	80	84	+ 4	+ 5.0%
Professional	313	314	+ 1	+ 0.3%
Nondegree	0	0	0	---
Total	321	322	+ 1	+ 0.3%
SPEA				
Freshman	0	2	+ 2	---
Sophomore	55	166	+ 111	+ 201.8%
Junior	277	335	+ 58	+ 20.9%
Senior	512	484	- 28	- 5.5%
Undergraduate	844	987	+ 143	+ 16.9%
Graduate	307	332	+ 25	+ 8.1%
Nondegree	2	0	- 2	- 100.0%
Total	1,153	1,319	+ 166	+ 14.4%
SOCIAL WORK				
Sophomore	3	1	- 2	- 66.7%
Junior	19	23	+ 4	+ 21.1%
Senior	31	35	+ 4	+ 12.9%
Undergraduate	53	59	+ 6	+ 11.3%
Total	53	59	+ 6	+ 11.3%
UNIVERSITY DIVISION				
Freshman	5,544	5,628	+ 84	+ 1.5%
Sophomore	2,942	3,239	+ 297	+ 10.1%
Junior	788	834	+ 46	+ 5.8%
Senior	131	145	+ 14	+ 10.7%
Undergraduate	9,405	9,846	+ 441	+ 4.7%
Nondegree	43	107	+ 64	+ 148.8%
Total	9,448	9,953	+ 505	+ 5.3%

*In 2004 and 2005 academic level for LAW students was based on semesters completed rather than hours.

CREDIT HOUR LOAD (SCHOOL)

The following table shows the average credit hour load by student school for this year and last year. Only Business, Continuing Studies, HPER, Journalism, Law, SPEA, and University Division are reporting increases in credit hour loads this year. Optometry has the highest credit hour load (16.89) among the schools.

TABLE 20: AVERAGE CREDIT HOUR LOAD BY STUDENT SCHOOL
SPRING TERMS

Student School	Spring 2006	Spring 2007	Change in Credit Hours
Arts and Sciences	13.79	13.68	- 0.10
Business	14.39	14.42	+ 0.04
Continuing Studies	10.19	10.20	+ 0.02
Education	10.52	9.18	- 1.35
Graduate School	8.07	8.06	- 0.01
HPER	13.63	13.70	+ 0.06
Informatics	12.76	12.70	- 0.05
Journalism	14.46	14.50	+ 0.04
Labor Studies	11.00	9.43	- 1.57
Law	13.38	13.46	+ 0.08
SLIS	8.21	7.94	- 0.27
Music	12.92	12.75	- 0.18
Nursing	14.12	14.11	- 0.00
Optometry	17.86	16.89	- 0.97
Social Work	14.30	14.25	- 0.05
SPEA	13.17	13.41	+ 0.24
University Division	14.58	14.61	+ 0.03
TOTAL	13.07	13.05	- 0.02

Note: Students enrolled in dual careers (i.e., MBA/JD students) are counted under each school. Thus, there will be two credit hour loads calculated for a dually enrolled student based on 1.) the number of credit hours the student is taking as a Business student and 2.) the number of credit hours taken as a Law student.

CREDIT HOURS AND COURSE ENROLLMENTS

COURSE LEVEL

This year, credit hours have increased 1.2% (+5,482.5 credit hours) to 478,783.5, the second highest credit hour figure on record, while campus enrollment has reached a new record-high figure. This increase is due to undergraduate credit hours, as graduate credit hours have decreased from the record-high figure set last year. Within the undergraduate level, the credit hour increases at the 100- and 200-levels outweigh the decreases seen at the 300- and 400-levels. As there was a record-breaking number of freshmen in the Fall and a record number of sophomores this Spring, this increase in 100- and 200-level credit hours could be expected, as lower-division courses are usually taken by first and second-year students. However, undergraduate credit hours have not increased to the record-breaking figures seen Spring 2004.

When comparing credit hours for spring to those for fall, undergraduate credit hours for Fall 2006 increased 1.0% compared to a 1.5% increase this Spring. However, graduate credit hours had increased 0.1% to a new record high for Fall 2006, and decreased 0.8% this Spring.

The following table details historical credit hour information beginning with Spring 1974, as well as the change in credit hours from last year.

TABLE 21: CREDIT HOURS BY COURSE LEVEL
SPRING TERMS

Spring Terms	100-level	200-level	300-level	400-level	Total Undergraduate	Graduate	Total
1974	121,389.5	68,020.0	70,676.0	44,876.0	304,961.5	60,986.4	365,947.9
1975	125,179.0	70,381.0	71,656.0	43,890.9	311,106.9	62,664.8	373,771.7
1976	135,590.0	72,597.1	72,050.5	46,755.3	326,992.9	65,672.6	392,665.5
1977	137,246.0	72,959.7	74,573.0	45,693.0	330,471.7	62,230.5	392,702.2
1978	128,480.0	71,614.0	73,013.0	44,087.1	317,194.1	59,988.4	377,182.5
1979	122,403.0	69,946.0	73,154.0	42,903.4	308,406.4	55,165.6	363,572.0
1980	126,651.0	71,857.5	70,663.5	45,589.5	314,761.5	58,412.0	373,173.5
1981	126,068.0	74,560.5	71,578.5	43,244.0	315,451.0	55,328.2	370,779.2
1982	130,215.0	77,585.0	70,881.0	42,964.0	321,645.0	54,697.5	376,342.5
1983	130,056.0	83,687.0	72,870.5	43,261.0	329,874.5	54,287.5	384,162.0
1984	128,192.0	82,783.0	75,584.0	42,071.5	328,630.5	53,743.5	382,374.0
1985	129,793.0	81,021.0	77,876.0	42,807.0	331,497.0	52,804.5	384,301.5
1986	130,056.0	77,524.0	78,373.5	43,218.0	329,171.5	53,148.1	382,319.6
1987	133,238.0	75,038.0	77,313.5	42,629.0	328,218.5	52,724.0	380,942.5
1988	136,504.0	79,194.0	81,069.0	42,608.0	339,375.0	57,937.5	397,312.5
1989	135,080.0	80,542.0	80,745.0	44,269.0	340,636.0	59,121.0	399,757.0
1990	141,729.0	81,167.0	82,335.5	45,826.0	351,057.5	60,349.7	411,407.2
1991	132,367.0	91,004.0	85,061.5	48,179.0	356,611.5	60,453.0	417,064.5
1992	136,366.0	93,545.0	90,547.0	46,859.0	367,317.0	60,540.5	427,857.5
1993	136,058.0	87,855.0	94,938.0	48,761.0	367,612.0	61,702.0	429,314.0
1994	134,538.0	88,422.0	90,940.5	46,095.0	359,995.5	66,971.5	426,967.0
1995	132,339.0	88,619.0	87,353.0	47,004.0	355,315.0	66,716.5	422,031.5
1996	125,479.0	91,727.0	87,746.0	47,632.0	352,584.0	66,349.5	418,933.5
1997	124,457.0	91,363.0	85,001.0	48,423.5	349,244.5	65,763.0	415,007.5
1998	124,256.5	94,345.0	85,599.0	47,804.5	352,005.0	66,215.5	418,220.5
1999	132,295.0	93,901.0	90,461.5	49,695.0	366,352.5	65,316.5	431,669.0
2000	135,319.0	96,151.0	92,359.0	51,243.5	375,072.5	65,600.0	440,672.5
2001	140,387.5	98,878.0	94,093.5	52,760.0	386,119.0	65,278.0	451,397.0
2002	137,064.0	105,607.0	103,292.5	54,618.5	400,582.0	66,490.5	467,072.5
2003	139,118.0	108,545.0	105,139.5	53,711.5	406,514.0	69,450.5	475,964.5
2004	141,111.0	105,272.0	106,839.5	57,202.5	410,425.0	72,233.5	482,658.5
2005	n/a	n/a	n/a	n/a	n/a	n/a	468,644.5
2006	131,079.5	101,140.0	109,409.5	56,853.5	398,482.5	74,818.5	473,301.0
2007	137,074.5	105,983.5	105,816.5	55,720.5	404,595.0	74,188.5	478,783.5
Change from last year	+ 5,995.0 + 4.6%	+ 4,843.5 + 4.8%	- 3,593.0 - 3.3%	- 1,133.0 - 2.0%	+ 6,112.5 + 1.5%	- 630.0 - 0.8%	+ 5,482.5 + 1.2%

Note: Shaded areas indicate record highs.

This year, 84.5% of the total campus credit hours are generated by undergraduate courses, a 0.3 percentage point increase from last year.

The following table shows historical course enrollments by course level from Spring 1974 as well as the change from last year. Course enrollments have increased +0.9% (+1,526 course enrollments) from last year due to an increase at the undergraduate level. As expected, the course enrollment increases and decreases mirror the credit hour activity within the undergraduate level: there was a 1.5% increase in undergraduate credit hours, compared to a 1.4% increase in undergraduate course enrollments. However, graduate credit hours have decreased by 0.8%, while graduate course enrollments show a substantial decrease at 1.3%.

When comparing course enrollments for Spring 2007 to Fall 2006, the course enrollment activity for Spring mirrors that of Fall, with undergraduate and total course enrollments increasing, and graduate course enrollments decreasing.

TABLE 22: COURSE ENROLLMENTS BY COURSE LEVEL
SPRING TERMS

Spring Term	100-level	200-level	300-level	400-level	Total Undergraduate	Graduate	Total
1974	42,100	22,360	24,351	13,657	102,468	20,910	123,378
1975	44,874	22,928	24,732	13,881	106,415	21,738	128,153
1976	49,314	23,679	24,885	14,490	112,368	22,748	135,116
1977	49,696	23,707	25,662	14,115	113,180	21,425	134,605
1978	45,932	23,905	25,243	13,830	108,910	21,314	130,224
1979	43,906	23,508	25,158	13,791	106,363	19,784	126,147
1980	45,169	24,264	24,358	14,910	108,701	20,209	128,910
1981	46,156	25,315	24,667	14,340	110,478	19,076	129,554
1982	47,374	25,984	24,476	14,371	112,205	18,543	130,748
1983	46,652	27,484	25,119	14,426	113,681	18,546	132,227
1984	45,688	27,368	26,004	14,102	113,162	18,321	131,483
1985	46,108	26,967	26,860	14,348	114,283	18,035	132,318
1986	46,609	25,937	26,990	14,229	113,765	18,199	131,964
1987	47,127	25,184	26,532	13,772	112,615	17,990	130,605
1988	48,133	26,623	27,829	13,789	116,374	19,047	135,421
1989	47,781	26,936	27,667	14,088	116,472	18,838	135,310
1990	49,909	26,954	28,069	14,450	119,382	19,276	138,658
1991	46,753	30,223	28,939	15,097	121,012	19,469	140,481
1992	49,459	31,061	30,863	14,858	126,241	19,351	145,592
1993	50,001	29,045	32,340	15,314	126,700	19,860	146,560
1994	49,861	29,399	30,988	14,152	124,400	21,471	145,871
1995	48,617	29,824	29,810	14,292	122,543	21,859	144,402
1996	46,404	30,795	31,719	15,113	124,031	21,762	145,793
1997	45,924	31,021	31,060	15,312	123,317	21,909	145,226
1998	46,024	32,043	31,773	15,090	124,930	22,137	147,067
1999	49,094	31,792	33,291	15,479	129,656	21,916	151,572
2000	50,422	32,494	33,880	15,658	132,454	22,681	155,135
2001	52,172	33,478	34,266	16,493	136,409	24,179	160,588
2002	51,174	35,803	37,520	17,124	141,621	24,268	165,889
2003	51,441	36,784	37,830	16,908	142,963	25,280	168,243
2004	51,546	35,996	38,300	17,734	143,576	26,083	169,659
2005	n/a	n/a	n/a	n/a	n/a	n/a	n/a
2006	48,550	34,679	37,757	17,601	138,587	27,243	165,830
2007	50,493	36,416	36,161	17,397	140,467	26,889	167,356
Change from last year	+ 1,943 + 4.0%	+ 1,737 + 5.0%	- 1,596 - 4.2%	- 204 - 1.2%	+ 1,880 + 1.4%	- 354 - 1.3%	+ 1,526 + 0.9%

Note: Shaded areas indicate record highs.

COURSE SCHOOL

Net credit hours and course enrollments by course school are displayed in the following table. Course enrollments and credit hours for all courses are available on the web at <http://www.indiana.edu/~registra/coursesectn/>.

TABLE 23: CREDIT HOURS AND COURSE ENROLLMENTS BY COURSE SCHOOL AND COURSE LEVEL
SPRING TERMS

	Credit Hours				Course Enrollments			
	2006	2007	Change	Percent Change	2006	2007	Change	Percent Change
Arts and Sciences								
Undergraduate	232,288.5	236,577.5	+ 4,289.0	+ 1.8%	75,797	77,155	+ 1,358	+ 1.8%
Graduate	21,271.0	21,431.5	+ 160.5	+ 0.8%	5,948	5,890	- 58	- 1.0%
Total	253,559.5	258,009.0	+ 4,449.5	+ 1.8%	81,745	83,045	+ 1,300	+ 1.6%
Business								
Undergraduate	53,821.5	56,023.5	+ 2,202.0	+ 4.1%	20,465	20,986	+ 521	+ 2.5%
Graduate	8,926.5	9,101.5	+ 175.0	+ 2.0%	4,993	5,186	+ 193	+ 3.9%
Total	62,748.0	65,125.0	+ 2,377.0	+ 3.8%	25,458	26,172	+ 714	+ 2.8%
Continuing Studies								
Undergraduate	2.0	9.0	+ 7.0	+ 350.0%	1	3	+ 2	+ 200.0%
Total	2.0	9.0	+ 7.0	+ 350.0%	1	3	+ 2	+ 200.0%
Education								
Undergraduate	21,268.0	19,979.5	- 1,288.5	- 6.1%	7,157	6,715	- 442	- 6.2%
Graduate	11,244.0	9,903.0	- 1,341.0	- 11.9%	3,764	3,246	- 518	- 13.8%
Total	32,512.0	29,882.5	- 2,629.5	- 8.1%	10,921	9,961	- 960	- 8.8%
Graduate School								
Undergraduate	0.0	0.0	,0.0	---	2	2	,0	0.0%
Graduate	172.0	197.0	+ 25.0	+ 14.5%	52	61	+ 9	+ 17.3%
Total	172.0	197.0	+ 25.0	+ 14.5%	54	63	+ 9	+ 16.7%
HPER								
Undergraduate	37,670.0	37,765.0	+ 95.0	+ 0.3%	16,193	16,042	- 151	- 0.9%
Graduate	2,586.0	2,649.0	+ 63.0	+ 2.4%	825	832	+ 7	+ 0.8%
Total	40,256.0	40,414.0	+ 158.0	+ 0.4%	17,018	16,874	- 144	- 0.8%
Informatics								
Undergraduate	6,025.5	6,114.5	+ 89.0	+ 1.5%	1,844	1,863	+ 19	+ 1.0%
Graduate	2,090.0	2,302.0	+ 212.0	+ 10.1%	624	671	+ 47	+ 7.5%
Total	8,115.5	8,416.5	+ 301.0	+ 3.7%	2,468	2,534	+ 66	+ 2.7%
Journalism								
Undergraduate	5,064.0	5,937.0	+ 873.0	+ 17.2%	1,772	2,159	+ 387	+ 21.8%
Graduate	445.0	382.0	- 63.0	- 14.2%	146	125	- 21	- 14.4%
Total	5,509.0	6,319.0	+ 810.0	+ 14.7%	1,918	2,284	+ 366	+ 19.1%
Labor Studies								
Undergraduate	739.0	754.0	+ 15.0	+ 2.0%	254	260	+ 6	+ 2.4%
Graduate	3.0	0.0	- 3.0	- 100.0%	1	0	- 1	- 100.0%
Total	742.0	754.0	+ 12.0	+ 1.6%	255	260	+ 5	+ 2.0%
Law								
Graduate	9,629.0	9,286.0	- 343.0	- 3.6%	3,435	3,260	- 175	- 5.1%
Total	9,629.0	9,286.0	- 343.0	- 3.6%	3,435	3,260	- 175	- 5.1%

TABLE 23: CREDIT HOURS AND COURSE ENROLLMENTS BY COURSE SCHOOL AND COURSE LEVEL (CONTINUED)
 SPRING TERMS

	Credit Hours				Course Enrollments			
	2006	2007	Change	Percent Change	2006	2007	Change	Percent Change
SLIS								
Undergraduate	91.0	122.0	+ 31.0	+ 34.1%	34	51	+ 17	+ 50.0%
Graduate	2,575.5	2,314.0	- 261.5	- 10.2%	879	778	- 101	- 11.5%
Total	2,666.5	2,436.0	- 230.5	- 8.6%	913	829	- 84	- 9.2%
Medical Sciences								
Undergraduate	4,598.0	4,556.0	- 42.0	- 0.9%	1,039	1,022	- 17	- 1.6%
Graduate	131.0	194.0	+ 63.0	+ 48.1%	37	48	+ 11	+ 29.7%
Total	4,729.0	4,750.0	+ 21.0	+ 0.4%	1,076	1,070	- 6	- 0.6%
Military Science								
Undergraduate	300.0	339.0	+ 39.0	+ 13.0%	124	143	+ 19	+ 15.3%
Total	300.0	339.0	+ 39.0	+ 13.0%	124	143	+ 19	+ 15.3%
Music								
Undergraduate	18,034.0	17,463.0	- 571.0	- 3.2%	7,641	7,453	- 188	- 2.5%
Graduate	5,754.0	6,360.5	+ 606.5	+ 10.5%	3,052	3,335	+ 283	+ 9.3%
Total	23,788.0	23,823.5	+ 35.5	+ 0.1%	10,693	10,788	+ 95	+ 0.9%
Nursing								
Undergraduate	1,798.0	1,805.0	+ 7.0	+ 0.4%	684	690	+ 6	+ 0.9%
Total	1,798.0	1,805.0	+ 7.0	+ 0.4%	684	690	+ 6	+ 0.9%
Optometry								
Undergraduate	290.0	313.0	+ 23.0	+ 7.9%	76	85	+ 9	+ 11.8%
Graduate	5,801.5	5,512.0	- 289.5	- 5.0%	2,099	1,950	- 149	- 7.1%
Total	6,091.5	5,825.0	- 266.5	- 4.4%	2,175	2,035	- 140	- 6.4%
SPEA								
Undergraduate	15,193.0	15,341.0	+ 148.0	+ 1.0%	5,069	5,339	+ 270	+ 5.3%
Graduate	4,190.0	4,556.0	+ 366.0	+ 8.7%	1,388	1,507	+ 119	+ 8.6%
Total	19,383.0	19,897.0	+ 514.0	+ 2.7%	6,457	6,846	+ 389	+ 6.0%
Social Work								
Undergraduate	1,300.0	1,496.0	+ 196.0	+ 15.1%	435	499	+ 64	+ 14.7%
Total	1,300.0	1,496.0	+ 196.0	+ 15.1%	435	499	+ 64	+ 14.7%
TOTAL								
Undergraduate	398,482.5	404,595.0	+ 6,112.5	+ 1.5%	138,587	140,467	+ 1,880	+ 1.4%
Graduate	74,818.5	74,188.5	- 630.0	- 0.8%	27,243	26,889	- 354	- 1.3%
CAMPUS TOTAL	473,301.0	478,783.5	+ 5,482.5	+ 1.2%	165,830	167,356	+ 1,526	+ 0.9%

Note: Undergraduate course level is defined as 0-499 level courses while Graduate is defined as 500+.

The Graduate School, HPER, Informatics, Journalism, Labor Studies, and Social Work are all reporting record-high numbers of credit hours this year. It should be noted that since with the implementation of the new SIS system, the Graduate School became a course school rather than a department in Arts and Sciences. Additionally, in 2005, the Computer Science department moved from Arts and Sciences to the School of Informatics. The following schools are also reporting credit hour increases from last year: Arts and Sciences, Business, Continuing Studies, Medical Sciences, Military Sciences, Music, Nursing, and SPEA.

When comparing course school credit hour increases to data for Fall 2006, the Graduate School, HPER and Military Sciences reported decreases in the number of credit hours for Fall, while increasing for the Spring term. All other schools mirror the increases and decreases shown for Fall.

Usually, course enrollments mirror credit hour activity within the schools. For most schools this year, this is indeed true. However, course enrollments in both HPER and Medical Sciences have decreased this year while their credit hours have increased.

Credit hours by student class and level are shown in the following table. Credit hours taken by undergraduate and graduate students have increased this year. Within the undergraduate level, credit hours taken by freshmen and sophomores have increased this year, with credit hours taken by sophomores reaching a new record-high figure (since data were first available in 1973). Within the graduate level, credit hours taken by doctoral students have increased to a new record-high figure as well.

TABLE 24: CREDIT HOURS AND SHARE BY STUDENT CLASS AND LEVEL
SPRING TERMS

	2006	2007	Change	Percent Change
Freshman	89,377.5 22.7%	92,080.0 23.0%	+2,702.5	+ 3.0%
Sophomore	90,700.5 23.0%	100,422.5 25.1%	+9,722.0	+ 10.7%
Junior	88,287.0 22.4%	84,122.5 21.0%	- 4,164.5	- 4.7%
Senior	126,020.0 32.0%	123,661.5 30.9%	- 2,358.5	- 1.9%
Undergraduate Total	394,385.0 83.3%	400,286.5 83.6%	+5,901.5	+ 1.5%
Masters	33,258.0 57.4%	33,361.0 56.4%	+ 103.0	+ 0.3%
Doctoral	24,669.0 42.6%	25,828.5 43.6%	+ 1,159.5	+ 4.7%
Graduate Total	57,927.0 12.2%	59,189.5 12.4%	+ 1,262.5	+ 2.2%
Professional Total	14,436.0 3.1%	13,809.0 2.9%	- 627.0	- 4.3%
High School	148.0 2.3%	107.0 1.9%	- 41.0	- 27.7%
Special Undergraduate	2,011.0 30.7%	2,309.5 42.0%	+ 298.5	+ 14.8%
Special Graduate	4,394.0 67.1%	3,082.0 56.1%	- 1,312.0	- 29.9%
Nondegree Total	6,553.0 1.4%	5,498.5 1.1%	- 1,054.5	- 16.1%
TOTAL	473,301.0	478,783.5	+5,482.5	+ 1.2%

G901 ENROLLMENTS

If all course requirements have been completed, doctoral candidates may enroll each semester for up to six terms in G901, Dissertation Research, which carries a value of six credit hours. G901 was first introduced in 1987. A flat fee of \$150 is assessed for this special course. The following table shows G901 enrollments by course school and department this year and last year.

Previously, departments could register students for G901 *in-absentia*, meaning the department would handle all the registration details for the student if they were researching elsewhere and not on campus. Beginning this year, in-absentia registration is no longer offered; students need to register themselves via the OneStart portal on the web.

TABLE 25: G901 ENROLLMENTS BY COURSE SCHOOL AND DEPARTMENT
SPRING TERMS

Course School/ Department	G901 Enrollments		Course School/ Department	G901 Enrollments	
	Spring 2006	Spring 2007		Spring 2006	Spring 2007
Arts and Sciences			Arts and Sciences (Cont.)		
			Neurosciences	5	5
American Studies	0	1	Philosophy	13	13
Anthropology	26	15	Physics	17	22
Astronomy	3	8	Political Science	15	18
Biochemistry	5	8	Psychological & Brain Sciences	10	16
Biology	54	47	Religious Studies	6	4
Central Eurasian Studies	1	7	Slavic Languages & Literature	0	1
Chemistry	39	53	Sociology	19	16
Classical Studies	3	4	Spanish & Portuguese	7	8
Communication & Culture	15	17	Speech & Hearing Sciences	2	2
Comparative Literature	3	4	Telecommunications	10	17
Criminal Justice	4	8	Theater & Drama	2	0
East Asian Languages & Cultures	1	2	Arts and Sciences Total	434	502
Economics	16	17			
English	35	41	Business	20	18
Fine Arts	7	8	Education	102	124
Folklore	18	20	HPER	9	16
French & Italian	20	21	Journalism	4	5
Geography	6	4	Informatics	39	37
Geological Sciences	8	11	Library & Information Science	6	4
Germanic Studies	2	2	Medical Sciences	1	6
History	22	37	Music	69	70
History & Philosophy of Science	3	6	Optometry	4	3
Linguistics	12	11	SPEA	39	33
Mathematics	23	25	TOTAL	727	818
Near Eastern Languages & Cultures	2	3			
			TOTAL CREDIT HOURS	4,362	4,908

COLLEGE DEPARTMENTS

Of the 66 Arts and Sciences departments reporting credit hours this year and last year, 37 departments show credit hour increases from last year, and 29 departments show credit hour decreases from last year. See Table 26.

There has been some shifting between course departments over the past several years. Beginning Fall 2005, Computer Science is no longer housed within the College, all courses are now listed under the School of Informatics. Beginning Fall 2004, the Graduate School is no longer a course department under the College, rather it is a course school proper. The Department of Second Language Studies was inaugurated this Fall, and courses which would have previously been listed under 'Linguistics' are now housed under Second Language Studies. Human Biology is a new department which began offering courses in the Fall.

There are several departments with notable increases in their numbers of credit hours this year. Animal Behavior, American Studies, Apparel Merchandising and Interior Design, International Studies, Latino Studies, and Latin American Studies have all increased more than 25% this year.

The top five departments based on the numbers of credit hours this year are Mathematics, English, Psychology, Biology, and Sociology. As all students need to take courses in English and Math, it follows that these two departments would likely have high credit hour counts.

TABLE 26: NET CREDIT HOURS BY ARTS AND SCIENCES DEPARTMENT
SPRING 2007

Arts and Sciences Department	Undergraduate			Graduate			Total		
	Credit Hours	Change	Percent Change	Credit Hours	Change	Percent Change	Credit Hours	Change	Percent Change
Animal Behavior	9.0	+ 3.0	+ 50.0%	21.0	+ 15.0	+ 250.0%	30.0	+ 18.0	+ 150.0%
African Studies	105.0	- 6.0	- 5.4%	1.0	+ 1.0	--	106.0	- 5.0	- 4.5%
African American & African Diaspora Studies	2,508.0	+ 35.0	+ 1.4%	182.0	- 15.0	- 7.6%	2,690.0	+ 20.0	+ 0.7%
Apparel Merchandising & Interior Design	3,895.0	+ 848.0	+ 27.8%	-	- 4.0	- 100.0%	3,895.0	+ 844.0	+ 27.7%
American Studies	639.0	+ 333.0	+ 108.8%	84.0	+ 6.0	+ 7.7%	723.0	+ 339.0	+ 88.3%
Anthropology	3,744.0	+ 209.0	+ 5.9%	690.0	- 33.0	- 4.6%	4,434.0	+ 176.0	+ 4.1%
Arts & Sciences Career Services	820.0	- 82.0	- 9.1%	-	0.0	---	820.0	- 82.0	- 9.1%
Astronomy	2,502.0	+ 102.0	+ 4.3%	150.0	- 5.0	- 3.2%	2,652.0	+ 97.0	+ 3.8%
Biochemistry	-	0.0	---	279.5	+ 9.0	+ 3.3%	279.5	+ 9.0	+ 3.3%
Biology	11,594.0	+ 761.0	+ 7.0%	1,404.0	- 17.5	- 1.2%	12,998.0	+ 743.5	+ 6.1%
Central Eurasian Studies	261.0	- 28.0	- 9.7%	480.0	- 8.0	- 1.6%	741.0	- 36.0	- 4.6%
Chemistry	9,212.0	+ 438.0	+ 5.0%	1,320.0	- 110.5	- 7.7%	10,532.0	+ 327.5	+ 3.2%
Criminal Justice	6,789.0	+ 180.0	+ 2.7%	239.0	- 14.0	- 5.5%	7,028.0	+ 166.0	+ 2.4%
Classical Studies	2,955.0	- 278.0	- 8.6%	162.0	+ 52.0	+ 47.3%	3,117.0	- 226.0	- 6.8%
Collins Living Learning Center	564.0	+ 38.0	+ 7.2%	-	0.0	---	564.0	+ 38.0	+ 7.2%
Communication & Culture	9,728.0	- 243.0	- 2.4%	479.0	- 6.0	- 1.2%	10,207.0	- 249.0	- 2.4%
Comparative Literature	1,752.0	+ 150.0	+ 9.4%	305.0	+ 8.0	+ 2.7%	2,057.0	+ 158.0	+ 8.3%
COLL	5,272.0	+ 13.0	+ 0.2%	-	0.0	---	5,272.0	+ 13.0	+ 0.2%
Cognitive Science	209.0	- 22.0	- 9.5%	103.0	- 29.0	- 22.0%	312.0	- 51.0	- 14.0%
Cultural Studies	-	0.0	---	30.0	- 12.0	- 28.6%	30.0	- 12.0	- 28.6%
East Asian Languages & Cultures	2,655.0	+ 472.0	+ 21.6%	161.0	- 11.0	- 6.4%	2,816.0	+ 461.0	+ 19.6%

TABLE 26: NET CREDIT HOURS BY ARTS AND SCIENCES DEPARTMENT (CONTINUED)
 SPRING 2007

Arts and Sciences Department	Undergraduate			Graduate			Total		
	Credit Hours	Change	Percent Change	Credit Hours	Change	Percent Change	Credit Hours	Change	Percent Change
Economics	10,433.0	+ 263.0	+ 2.6%	697.0	+ 70.0	+ 11.2%	11,130.0	+ 333.0	+ 3.1%
English	16,633.0	- 125.0	- 0.7%	1,457.0	+ 59.0	+ 4.2%	18,090.0	- 66.0	- 0.4%
Fine Arts	8,622.0	- 331.5	- 3.7%	1,055.0	- 137.0	- 11.5%	9,677.0	- 468.5	- 4.6%
Folklore	2,964.0	- 55.0	- 1.8%	697.0	+ 14.0	+ 2.0%	3,661.0	- 41.0	- 1.1%
Foster Living Learning Center	8.0	- 2.0	- 20.0%	-	0.0	---	8.0	- 2.0	- 20.0%
French & Italian	6,237.0	+ 269.0	+ 4.5%	521.0	- 43.0	- 7.6%	6,758.0	+ 226.0	+ 3.5%
Gender Studies	3,640.0	+ 15.0	+ 0.4%	149.0	+ 92.0	+ 161.4%	3,789.0	+ 107.0	+ 2.9%
Geography	3,604.0	+ 351.0	+ 10.8%	228.0	+ 37.0	+ 19.4%	3,832.0	+ 388.0	+ 11.3%
Geological Sciences	2,370.0	- 95.0	- 3.9%	443.5	+ 167.5	+ 60.7%	2,813.5	+ 72.5	+ 2.6%
Germanic Studies	2,054.0	- 124.0	- 5.7%	221.0	0.0	---	2,275.0	- 124.0	- 5.2%
Global Village	47.0	- 11.0	- 19.0%	-	0.0	---	47.0	- 11.0	- 19.0%
History	9,780.0	+ 456.0	+ 4.9%	1,006.0	+ 61.0	+ 6.5%	10,786.0	+ 517.0	+ 5.0%
History & Philosophy of Science	683.0	+ 106.0	+ 18.4%	239.0	+ 35.0	+ 17.2%	922.0	+ 141.0	+ 18.1%
Honors	1,196.0	+ 94.0	+ 8.5%	-	0.0	---	1,196.0	+ 94.0	+ 8.5%
Human Biology	135.0	+ 135.0	---	-	0.0	---	135.0	+ 135.0	---
Human Evolutionary Studies	-	0.0	---	-	- 9.0	- 100.0%	-	- 9.0	- 100.0%
India Studies	156.0	+ 6.0	+ 4.0%	31.0	- 2.0	- 6.1%	187.0	+ 4.0	+ 2.2%
Individualized Major Program	109.0	- 65.0	- 37.4%	-	0.0	---	109.0	- 65.0	- 37.4%
International Studies	1,304.0	+ 280.0	+ 27.3%	-	0.0	---	1,304.0	+ 280.0	+ 27.3%
Jewish Studies	488.0	- 84.0	- 14.7%	8.0	+ 2.0	+ 33.3%	496.0	- 82.0	- 14.2%
Latino Studies	381.0	+ 177.0	+ 86.8%	-	0.0	---	381.0	+ 177.0	+ 86.8%
Leadership Ethics & Social Action	139.0	- 7.0	- 4.8%	-	0.0	---	139.0	- 7.0	- 4.8%
Liberal Arts & Management Program	485.0	- 39.0	- 7.4%	-	0.0	---	485.0	- 39.0	- 7.4%

TABLE 26: NET CREDIT HOURS BY ARTS AND SCIENCES DEPARTMENT (CONTINUED)
 SPRING 2007

Arts and Sciences Department	Undergraduate			Graduate			Total		
	Credit Hours	Change	Percent Change	Credit Hours	Change	Percent Change	Credit Hours	Change	Percent Change
Linguistics	1,087.0	- 226.0	- 17.2%	487.0	- 327.0	- 40.2%	1,574.0	- 553.0	- 26.0%
Latin American And Caribbean Studies	205.0	+ 67.0	+ 48.6%	76.0	+ 30.0	+ 65.2%	281.0	+ 97.0	+ 52.7%
Mathematics	18,594.0	+ 749.0	+ 4.2%	981.0	- 149.0	- 13.2%	19,575.0	+ 600.0	+ 3.2%
Medieval Studies	99.0	- 18.0	- 15.4%	32.0	+ 23.0	+ 255.6%	131.0	+ 5.0	+ 4.0%
Near Eastern Languages & Cultures	798.0	+ 104.0	+ 15.0%	290.0	+ 41.0	+ 16.5%	1,088.0	+ 145.0	+ 15.4%
Neurosciences	-	0.0	---	222.0	+ 0.5	+ 0.2%	222.0	+ 0.5	+ 0.2%
Overseas Studies	5,304.0	- 498.0	- 8.6%	8.0	0.0	---	5,312.0	- 498.0	- 8.6%
Philosophy	3,445.0	- 371.0	- 9.7%	346.0	- 24.0	- 6.5%	3,791.0	- 395.0	- 9.4%
Physics	5,004.0	+ 576.0	+ 13.0%	796.0	- 7.0	- 0.9%	5,800.0	+ 569.0	+ 10.9%
Political Science	8,019.0	- 224.0	- 2.7%	724.0	+ 76.0	+ 11.7%	8,743.0	- 148.0	- 1.7%
Psychological & Brain Sciences	17,034.0	- 637.0	- 3.6%	811.0	+ 30.0	+ 3.8%	17,845.0	- 607.0	- 3.3%
Russian & East European Institute	-	0.0	---	57.0	+ 9.0	+ 18.8%	57.0	+ 9.0	+ 18.8%
Religious Studies	3,114.0	+ 15.0	+ 0.5%	275.0	- 17.0	- 5.8%	3,389.0	- 2.0	- 0.1%
Second Language Studies	375.0	+ 375.0	---	309.0	+ 309.0	---	684.0	+ 684.0	---
Slavic Languages & Literatures	712.0	- 6.0	- 0.8%	153.0	- 42.0	- 21.5%	865.0	- 48.0	- 5.3%
Sociology	10,828.5	- 516.5	- 4.6%	821.0	- 32.0	- 3.8%	11,649.5	- 548.5	- 4.5%
Spanish & Portuguese	10,858.0	+ 892.0	+ 9.0%	516.0	+ 61.0	+ 13.4%	11,374.0	+ 953.0	+ 9.1%
Speech & Hearing Sciences	3,184.0	+ 9.0	+ 0.3%	878.0	+ 65.0	+ 8.0%	4,062.0	+ 74.0	+ 1.9%
Telecommunications	8,250.0	- 256.0	- 3.0%	421.5	+ 23.5	+ 5.9%	8,671.5	- 232.5	- 2.6%
Theater & Drama	2,854.0	+ 135.0	+ 5.0%	351.0	- 39.0	- 10.0%	3,205.0	+ 96.0	+ 3.1%
Victorian Studies	-	0.0	---	-	- 28.0	- 100.0%	-	- 28.0	- 100.0%
West European Studies	132.0	- 17.0	- 11.4%	34.0	- 15.0	- 30.6%	166.0	- 32.0	- 16.2%
TOTAL ARTS & SCIENCES	236,577.5	+ 4,289.0	+ 1.8%	21,431.5	+ 160.5	+ 0.8%	258,009.0	+ 4,449.5	+ 1.8%

Note: Credit hours enrolled in cross-listed courses are counted under the home department of the course.

GRADE DISTRIBUTION (HISTORICAL)

With many universities across the United States examining their grading systems, the IU-Bloomington Faculty Council approved a recommendation, in the spring of 1994, to create an indexed grade context record for student grade reports and internal records. The goal was to be able to provide students with a more meaningful measure of their performance in a course. The expanded grade context record and subsequent reports have been designed to include: the number of students in a class section, number of students who received the same grade or higher compared to the total number of students in the section who receive GPA grades, the distribution of all grades in the section, the percentage of students in the section whose major school or department (for the College of Arts and Sciences or Graduate School) matches the school or department that is offering the course, average grade in the section, and the average cumulative GPA of all the students in the section. For a more complete description of context reporting, refer to the *Fall Enrollment Report* or the web reports at <http://registrar.indiana.edu/~registra/gradedist/>.

To help in the interpretation of grades data, course grades and their GPA point equivalents are shown below.

TABLE 27: COURSE GRADES AND GPA POINT EQUIVALENTS

Definitions of Non-GPA Course Grades	
P - Passed (Pass-Fail Option)	NR - No report filed by instructor
S - Satisfactory	NC - No Credit
I - Incomplete	NY - Enrollment in special program
R - Deferred	W - Withdrawn - Passing
	WX - Courses dropped the first week of classes

Grade	GPA Points	Grade	GPA Points	Grade	GPA Points	Grade	GPA Points
A+	4.0	B+	3.3	C+	2.3	D+	1.3
A	4.0	B	3.0	C	2.0	D	1.0
A-	3.7	B-	2.7	C-	1.7	D-	0.7
						F	0.0

The following figure and tables show data based on this new system (starting with 1996) as well as historical data prior to the grade context record. The data prior to 1996 vary slightly due to different counting formulas and file storage definitions. One major difference is that the grade context methodology does not include the WZ grade, used to record section changes on internal course records, which had been included in the previous grade reporting methodology. For this report, the historical information has been adjusted by removing the WZ grades from the total grades in order to make the data more comparable with the revised methodology. All data reported throughout this section reflect grades earned by **all students** (undergraduate, graduate, professional, and nondegree) in **all courses** (000-900 levels).

The following figure shows the trend of GPA grades issued. Spring 1992 marked the point when the percentage of A's earned surpassed any other grade earned. Prior to 1992, the percentage of B's earned held the highest share. Since Spring 1992, the gap between the percentage of A's and the percentage of B's has grown every year (with the exception of Spring 1997 and Spring 2006) from a difference of 0.4 percentage points in 1992 to 12.2 percentage points in 2006. Since Spring 1984, the percentage of C's has decreased 9.1 percentage points, from 22.2% in 1984 to 13.1% in 2006.

FIGURE 7: GPA COURSE GRADES
SPRING TERMS

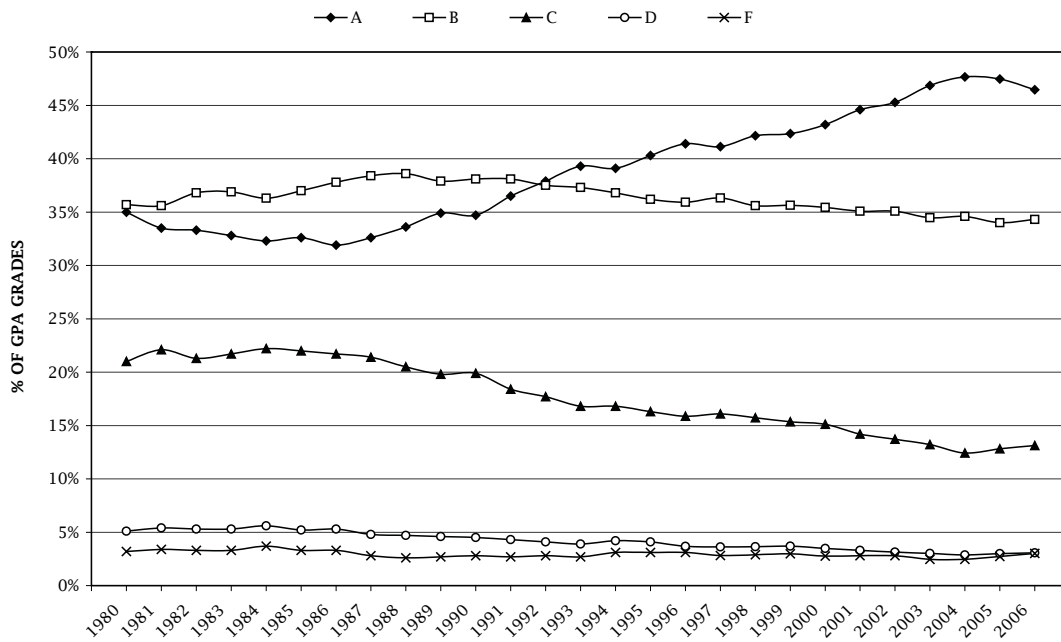


Table 28 provides the distribution of **GPA grades** and Table 29 shows the distribution of **all grades** from Spring 1980 to the present.

TABLE 28: HISTORICAL GPA COURSE GRADE DISTRIBUTION
SPRING TERMS

Spring Terms	Percentage of GPA Grades					Average Course Grade	Percent Majors	Total GPA Grades
	A	B	C	D	F			
1980	35.0%	35.7%	21.0%	5.1%	3.2%	2.93		112,137
1981	33.5%	35.6%	22.1%	5.4%	3.4%	2.89		112,207
1982	33.3%	36.8%	21.3%	5.3%	3.3%	2.90		113,867
1983	32.8%	36.9%	21.7%	5.3%	3.3%	2.89		116,641
1984	32.3%	36.3%	22.2%	5.6%	3.7%	2.87		116,113
1985	32.6%	37.0%	22.0%	5.2%	3.3%	2.89		117,312
1986	31.9%	37.8%	21.7%	5.3%	3.3%	2.88		117,024
1987	32.6%	38.4%	21.4%	4.8%	2.8%	2.92		115,840
1988	33.6%	38.6%	20.5%	4.7%	2.6%	2.94		120,682
1989	34.9%	37.9%	19.8%	4.6%	2.7%	2.96		119,410
1990	34.7%	38.1%	19.9%	4.5%	2.8%	2.96		121,675
1991	36.5%	38.1%	18.4%	4.3%	2.7%	3.00		124,328
1992	37.9%	37.5%	17.7%	4.1%	2.8%	3.02		127,818
1993	39.3%	37.3%	16.8%	3.9%	2.7%	3.05		128,196
1994	39.1%	36.8%	16.8%	4.2%	3.1%	3.03		127,145
1995	40.3%	36.2%	16.3%	4.1%	3.1%	3.05		126,389
1996	41.4%	35.9%	15.9%	3.7%	3.1%	3.07	37%	126,648
1997	41.1%	36.3%	16.1%	3.6%	2.8%	3.07	38%	125,548
1998	42.2%	35.6%	15.7%	3.6%	2.9%	3.08	39%	128,129
1999	42.3%	35.6%	15.3%	3.7%	3.0%	3.08	38%	132,778
2000	43.2%	35.4%	15.1%	3.5%	2.8%	3.10	38%	136,181
2001	44.6%	35.1%	14.2%	3.3%	2.8%	3.13	39%	142,024
2002	45.3%	35.1%	13.7%	3.1%	2.8%	3.14	38%	147,809
2003	46.9%	34.5%	13.2%	3.0%	2.5%	3.18	40%	150,940
2004	47.7%	34.6%	12.4%	2.9%	2.5%	3.20	41%	151,756
2005	47.5%	34.0%	12.8%	3.0%	2.7%	3.18	48%	148,606
2006	46.5%	34.3%	13.1%	3.1%	3.0%	3.16	43%	149,509

Note: Beginning in 1996, a slightly different methodology was used. Percentage differences are negligible.

TABLE 29: HISTORICAL TOTAL COURSE GRADES
SPRING TERMS

Percentage of Total Grades											
Spring Terms	A	B	C	D	F	S & P Grades	I & R Grades	W Grades	WX Grades (see note)	Other Non GPA Grades	Total Grades
1980	27.8%	28.4%	16.7%	4.1%	2.5%	3.0%	3.9%	4.2%	5.3%	2.1%	140,984
1981	26.2%	27.8%	17.3%	4.2%	2.7%	3.9%	3.7%	4.8%	5.5%	1.7%	143,557
1982	26.3%	29.1%	16.9%	4.2%	2.6%	3.9%	4.0%	4.2%	5.4%	1.2%	143,758
1983	26.3%	29.5%	17.4%	4.2%	2.7%	3.9%	3.9%	3.9%	5.5%	0.7%	145,571
1984	24.7%	27.7%	16.9%	4.3%	2.8%	3.7%	3.5%	4.4%	9.0%	1.0%	151,865
1985	24.6%	27.9%	16.6%	3.9%	2.5%	3.7%	3.4%	4.0%	10.5%	0.6%	155,461
1986	23.9%	28.3%	16.2%	4.0%	2.5%	3.7%	3.4%	3.4%	11.3%	0.9%	156,301
1987	24.3%	28.7%	16.0%	3.6%	2.1%	3.8%	3.2%	3.5%	11.5%	1.1%	155,076
1988	25.5%	29.3%	15.6%	3.6%	2.0%	3.9%	3.1%	3.3%	10.7%	0.7%	158,807
1989	26.0%	28.3%	14.8%	3.4%	2.0%	4.0%	3.1%	3.7%	11.3%	1.2%	160,302
1990	25.8%	28.2%	14.8%	3.3%	2.1%	4.1%	3.1%	4.3%	10.6%	1.5%	164,054
1991	27.5%	28.7%	13.8%	3.2%	2.0%	3.7%	3.1%	4.3%	9.9%	1.5%	165,127
1992	28.5%	28.2%	13.3%	3.0%	2.1%	3.9%	3.1%	5.4%	9.5%	0.8%	170,096
1993	29.4%	27.9%	12.6%	2.9%	2.0%	4.0%	3.0%	5.5%	9.3%	1.2%	171,228
1994	29.2%	27.6%	12.6%	3.2%	2.3%	3.7%	3.2%	6.1%	9.0%	1.1%	169,851
1995	30.8%	27.7%	12.5%	3.1%	2.4%	4.1%	3.1%	6.1%	7.4%	1.1%	165,146
1996	32.5%	28.2%	12.5%	2.9%	2.4%	4.0%	3.2%	7.1%	5.9%	1.3%	161,474
1997	32.0%	28.3%	12.5%	2.8%	3.7%	4.2%	3.1%	7.0%	6.5%	1.3%	161,273
1998	33.1%	28.0%	12.4%	2.9%	2.3%	4.0%	3.1%	7.2%	6.0%	1.1%	162,951
1999	34.5%	29.0%	12.5%	2.9%	2.3%	4.4%	2.8%	7.5%	6.1%	1.1%	167,941
2000	34.2%	28.1%	12.0%	2.8%	2.2%	4.1%	2.7%	7.1%	5.8%	1.1%	172,007
2001	35.8%	28.1%	11.4%	2.6%	2.2%	4.0%	2.5%	6.6%	5.7%	1.0%	177,078
2002	36.4%	28.2%	11.0%	2.5%	2.2%	3.8%	2.6%	6.5%	6.2%	0.7%	184,046
2003	37.8%	27.8%	10.7%	2.4%	2.0%	3.9%	2.5%	6.2%	5.8%	0.8%	186,899
2004	38.5%	27.9%	10.0%	2.3%	2.0%	3.8%	2.7%	6.1%	5.7%	0.8%	187,829
2005	37.8%	27.1%	10.2%	2.4%	2.2%	2.9%	2.5%	6.2%	7.8%	0.8%	186,434
2006	36.7%	27.1%	10.4%	2.4%	2.4%	3.4%	2.4%	6.6%	7.9%	0.6%	189,178

Note: Beginning in 1996, a slightly different methodology was used. Percentage differences are negligible.

PEER INSTITUTIONS

BIG TEN AND STATE SCHOOLS

Most Big Ten institutions are reporting increases and record enrollment figures this year. The National Center for Education Statistics anticipates increases in enrollments in degree-granting institutions over the next ten years. Enrollments for Hispanic and Native American and Alaskan Native students are expected to show the largest increases (NCES, 'Projections of Education Statistics', 2006). Following declines nationally, enrollments for graduate international students showed a 1 percent gain in the fall. The overall number of new foreign students rose 12 percent this past fall (Chronicle of Higher Education, November 2006).

Enrollments for the Big Ten universities are shown in Table 30.

TABLE 30: ENROLLMENT AT BIG TEN INSTITUTIONS (MAIN CAMPUSES)
SPRING TERMS

Big Ten Institution	1995	1996	1997	1998	1999	2000	2001	2002	2003	2004	2005	2006	2007	Change from Spring 2006 to Spring 2007		Change from Fall 2005 to Fall 2006
														Numeric	Percent	Percent
Indiana University	32,802	32,592	32,195	32,298	33,078	33,553	34,303	35,474	36,281	36,473	35,695	36,200	36,698	+ 498	+ 1.4%	+ 0.8%
University of Illinois	34,220	34,497	34,324	33,940	34,359	34,595	34,886	35,795	36,318	36,712	37,585	38,622	39,266	+ 644	+ 1.7%	+ 1.7%
University of Iowa	25,188	25,778	26,026	26,045	26,875	26,956	26,611	27,439	28,160	28,190	28,251	28,355	28,653	+ 298	+ 1.1%	+ 1.1%
University of Michigan**	34,205	34,415	34,109	34,713	35,105	35,512	35,684	36,377	36,787	36,844	37,308	37,751	38,006	+ 255	+ 0.7%	+ 0.1%
Michigan St. University	37,838	38,584	39,400	40,369	40,766	41,118	41,355	42,407	42,761	42,397	42,751	42,960	n/a	---	---	+ 0.1%
University of Minnesota	34,909	34,855	34,781	35,479	36,077	42,405	43,394	44,934	47,273	47,518	48,484	48,150	48,194	+ 44	+ 0.1%	+ 2.6%
Northwestern University***	11,762	11,833	11,798	11,774	11,794	11,766	11,659	12,297	12,983	14,790	15,210	16,411	16,926	+ 515	+ 3.1%	+ 2.6%
Ohio State University**	46,508	45,974	45,708	46,208	46,217	46,359	46,044	47,148	48,256	49,083	48,827	49,084	50,366	+ 1,282	+ 2.6%	+ 2.6%
Penn State University*	35,669	36,880	37,177	37,917	38,141	37,740	37,974	38,072	39,872	38,964	38,493	38,592	n/a	---	---	+ 5.4%
Purdue University	31,824	31,999	32,612	33,003	33,935	34,769	35,132	35,936	35,905	35,683	35,798	35,920	n/a	---	---	+ 1.3%
University of Wisconsin	37,553	37,226	37,193	37,527	37,753	38,053	38,413	39,240	39,119	39,059	39,060	39,041	n/a	---	---	- 0.1%

Notes:

* Preliminary

** Winter Quarter Statistics

*** Beginning Spring 2005 figures include both campuses

n/a = Holding final analyses for schools with late enrollment census dates

STUDENT PERSISTENCE

STUDENT PERSISTENCE

As with preparing graduation rates, there are different ways to identify student populations and calculate student persistence rates. Two methodologies discussed in this report are: 1) fall-to-spring comparison of a base population and 2) tracking a freshman cohort over time.

FALL-TO-SPRING BASE POPULATION COMPARISON

In 1981, the Office of the Registrar, Bloomington, began coordinating a three-part persistence program that focused on identifying students who may not be returning to the Bloomington campus. This was part of an early intervention program, with the goal of increasing student persistence through contacts between the student and his/her school before the beginning of the semester. The program included sending letters to eligible students who had not registered for the fall and inviting them to participate in a special registration. To accompany the operational aspect of this summer program, the Office of the Registrar also began preparing campus persistence statistics in 1982. The initial objective of these statistical reports was to measure the success of the intervention programs. The persistence reports compare the campus base population (all students) from one year to the next year. Semester-to-semester comparison reports are also prepared. Any student who is enrolled as of the semester official enrollment-reporting deadline is included in the comparison; semester of matriculation is not a factor. For example, a freshman class includes both new and returning students. Data reports are distributed to campus deans and administrators for a historical persistence perspective, enrollment planning, and examination of the non-returning student populations. **These data are not released to the public nor are they to be considered official data. Data from these reports regularly appear in the *Fall Enrollment Reports* and are the focus of this section.**

FRESHMAN COHORT TRACKING

The University Budget Office developed a student tracking system and in 1991 began reporting retention and graduation rates on entering freshmen for all Indiana University campuses. The impetus for reporting the rates was to provide data for all campuses and to respond to externally driven requests from the IHEC, NCAA and the Department of Education. The focus of the reporting is to identify newly matriculated freshmen and to follow them over time. The purpose of that type of study is to report what happens to students who matriculate, an ex post facto approach, and to provide a historical perspective. Student retention rates are gathered as the freshmen cohorts progress through their academic career. Methodological standards are set by the external agencies and are released publicly.

The total IU-Bloomington Spring term persistence rate has increased to 93.3% and is a record-breaking rate. Persistence data were first made available with the spring 1982 base population. There are record rates at the undergraduate (94.3%) and graduate (94.0%) levels this year as well. Though not a record rate this year, the nondegree level shows a notable increase to 56.2% (+5.5 percentage points). Auditors are excluded from both the base and the comparative populations.

The following graph displays campus persistence data.

FIGURE 8: IU-BLOOMINGTON PERSISTENCE AND ATTRITION
FALL 2006 TO SPRING 2007

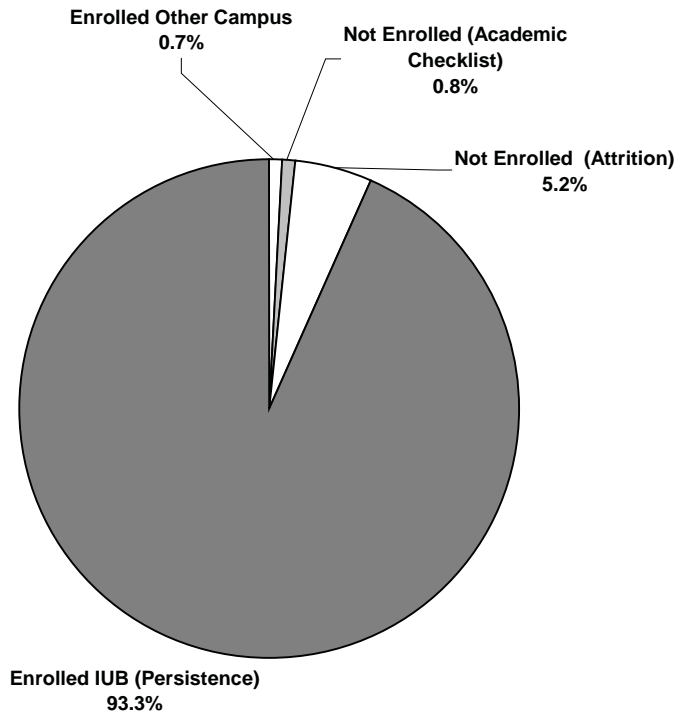


FIGURE 9: STUDENT PERSISTENCE
SPRING TERMS

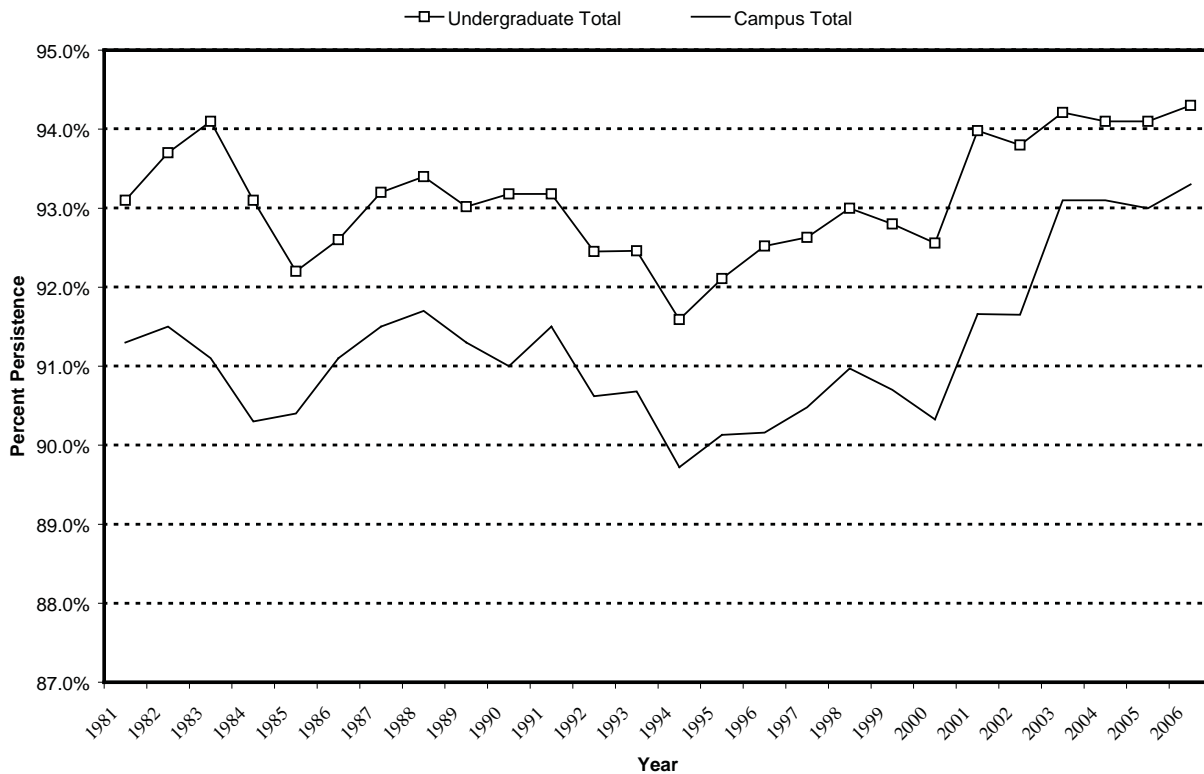


Table 31 shows a detailed summary of persistence/attrition data by student class and level for this Spring and this past Fall. The base population in the Fall at the end of the first week of classes was 38,247. Out of that population, 1,233 students received degrees (degrees awarded September 2006 through December 2006), leaving an adjusted base population of 37,014. Of these 37,014 students, 34,519 (93.3%) are enrolled at IU-Bloomington this Spring. Of the remaining 2,495 students, 261 (0.7%) are enrolled at other IU campuses, 309 (0.8%) are on the academic checklist and 1,925 (5.2%) are unaccounted for.

TABLE 31: STUDENT PERSISTENCE AND ATTRITION BY CLASS AND LEVEL
FALL TERM BASE POPULATION
COMPARED WITH THE FOLLOWING SPRING TERM ENROLLMENT

Class and Level	Year	1 Base Population	2 Received Degree	3 Adjusted Base	4 Re-Enrolled IU- Bloomington	5 Non- Returning Students	6 Enrolled at Other IU Campus	7 Academic Checklist	8 Non- Returning (Col 5 minus Cols 6 & 7)
Freshman	Last Year	7,761	1	7,760	7,159 92.3%	601 7.7%	81 1.0%	166 2.1%	354 4.6%
	This Year	8,126	2	8,124	7,548 92.9%	576 7.1%	99 1.2%	69 0.8%	408 5.0%
Sophomore	Last Year	6,823	9	6,814	6,404 94.0%	410 6.0%	43 0.6%	115 1.7%	252 3.7%
	This Year	7,260	5	7,255	6,849 94.4%	406 5.6%	48 0.7%	95 1.3%	263 3.6%
Junior	Last Year	6,664	6	6,658	6,418 96.4%	240 3.6%	21 0.3%	64 1.0%	155 2.3%
	This Year	6,129	9	6,120	5,858 95.7%	262 4.3%	26 0.4%	68 1.1%	168 2.7%
Senior	Last Year	7,872	958	6,914	6,493 93.9%	421 6.1%	33 0.5%	36 0.5%	352 5.1%
	This Year	7,743	853	6,890	6,505 94.4%	385 5.6%	27 0.4%	48 0.7%	310 4.5%
Undergraduate Total	Last Year	29,120	974	28,146	26,474 94.1%	1,672 5.9%	178 0.6%	381 1.4%	1,113 4.0%
	This Year	29,258	869	28,389	26,760 94.3%	1,629 5.7%	200 0.7%	280 1.0%	1,149 4.0%
Masters	Last Year	3,541	207	3,334	3,123 93.7%	211 6.3%	18 0.5%	3 0.1%	190 5.7%
	This Year	3,556	194	3,362	3,155 93.8%	207 6.2%	13 0.4%	5 0.1%	189 5.6%
Doctorate	Last Year	3,409	151	3,258	3,038 93.2%	220 6.8%	3 0.1%	0 0.0%	217 6.7%
	This Year	3,454	162	3,292	3,100 94.2%	192 5.8%	8 0.2%	4 0.1%	180 5.5%
Graduate Total	Last Year	6,950	358	6,592	6,161 93.5%	431 6.5%	21 0.3%	3 0.0%	407 6.2%
	This Year	7,010	356	6,654	6,255 94.0%	399 6.0%	21 0.3%	9 0.1%	369 5.5%
Professional Total	Last Year	953	1	952	947 99.5%	5 0.5%	0 0.0%	0 0.0%	5 0.5%
	This Year	937	1	936	922 98.5%	14 1.5%	0 0.0%	1 0.1%	13 1.4%
Nondegree	Last Year	935	8	927	470 50.7%	457 49.3%	30 3.2%	1 0.1%	426 46.0%
	This Year	1,042	7	1,035	582 56.2%	453 43.8%	40 3.9%	19 1.8%	394 38.1%
TOTAL	Last Year	37,958	1,341	36,617	34,052 93.0%	2,565 7.0%	229 0.6%	385 1.1%	1,951 5.3%
	This Year	38,247	1,233	37,014	34,519 93.3%	2,495 6.7%	261 0.7%	309 0.8%	1,925 5.2%

Note: Columns 6, 7 and 8 provide further detail of the Non-Returning students (Column 5).

The following two tables present a history of persistence rates from 1981 to 2006 for students returning to the Bloomington campus. There are persistence rate increases at all levels except at the professional level which shows a decrease. For the Bloomington campus, there are record rates at the undergraduate and graduate levels.

Within the undergraduate levels there are rate increases for all classes except the junior class. The senior class shows a record-high rate this year.

TABLE 32: HISTORICAL PERSISTENCE RATES BY STUDENT CLASS AND LEVEL
FALL TERM BASE POPULATION COMPARED WITH THE FOLLOWING SPRING TERM
ENROLLED AT IU-BLOOMINGTON

Year	Freshman	Sophomore	Junior	Senior	Undergraduate Total	Graduate	Professional	Nondegree	Total
1981-82	94.0%	92.0%	94.7%	91.5%	93.1%	90.0%	98.3%	57.5%	91.3%
1982-83	94.4%	93.0%	94.8%	92.5%	93.7%	90.7%	97.1%	54.6%	91.5%
1983-84	94.9%	94.6%	95.2%	91.2%	94.1%	90.9%	97.9%	47.8%	91.1%
1984-85	93.5%	92.9%	94.8%	90.8%	93.1%	90.5%	97.1%	44.9%	90.3%
1985-86	91.6%	92.1%	94.6%	90.6%	92.2%	90.9%	97.2%	52.2%	90.4%
1986-87	91.9%	92.3%	94.5%	91.7%	92.6%	91.5%	96.1%	56.4%	91.1%
1987-88	93.0%	92.9%	94.8%	92.1%	93.2%	92.0%	97.9%	55.1%	91.5%
1988-89	93.5%	93.4%	94.6%	91.9%	93.4%	91.7%	98.2%	58.0%	91.7%
1989-90	92.4%	93.5%	94.5%	91.4%	93.0%	91.2%	98.2%	57.3%	91.3%
1990-91	92.9%	93.8%	94.5%	91.4%	93.2%	90.6%	96.3%	52.5%	91.0%
1991-92	92.7%	93.7%	94.5%	91.9%	93.2%	93.0%	97.8%	55.8%	91.5%
1992-93	91.1%	92.9%	94.1%	91.8%	92.5%	92.5%	98.6%	51.9%	90.6%
1993-94	91.4%	93.0%	94.4%	91.3%	92.5%	93.5%	97.3%	53.0%	90.7%
1994-95	90.2%	92.1%	93.2%	91.1%	91.6%	93.2%	98.4%	46.4%	89.7%
1995-96	91.5%	92.0%	93.5%	91.6%	92.1%	93.4%	98.2%	46.9%	90.1%
1996-97	91.7%	93.2%	93.2%	92.1%	92.5%	92.7%	97.5%	43.3%	90.2%
1997-98	91.7%	92.4%	93.7%	92.9%	92.6%	92.7%	98.7%	45.1%	90.5%
1998-99	92.3%	93.5%	93.7%	92.7%	93.0%	92.6%	97.9%	43.6%	91.0%
1999-00	91.9%	93.6%	93.4%	92.2%	92.8%	92.1%	98.3%	42.9%	90.7%
2000-01	91.7%	93.0%	93.0%	92.8%	92.6%	92.1%	97.3%	41.3%	90.3%
2001-02	92.0%	94.6%	95.9%	93.9%	94.0%	92.2%	98.6%	41.5%	91.7%
2002-03	92.5%	93.4%	95.5%	94.1%	93.8%	93.1%	97.4%	40.4%	91.7%
2003-04	92.1%	94.5%	96.2%	94.2%	94.2%	93.5%	98.7%	53.6%	93.1%
2004-05	92.2%	94.7%	95.5%	94.2%	94.1%	93.9%	98.4%	54.7%	93.1%
2005-06	92.3%	94.0%	96.4%	93.9%	94.1%	93.5%	99.5%	50.7%	93.0%
2006-07	92.9%	94.4%	95.7%	94.4%	94.3%	94.0%	98.5%	56.2%	93.3%

Notes:

Data for 1982 through 1984 reflect end of fall term compared to the end of the third week of classes (official reporting date).

Data for 1985 through the present reflect end of the first week of classes (official reporting date) for fall term compared to the end of the first week of classes for the following spring term.

Auditors are only included in data prior to 1988.

Shaded areas indicate record high figures.

RESIDENCE CLASSIFICATION

The **resident** persistence rate of 92.3%, for all IU-Bloomington students returning to the Bloomington campus, has reached a record rate this year. There are increases in the persistence rates at the undergraduate (93.6%), graduate (91.4%), and nondegree (55.8%) levels. The rate at the professional level (98.8%) has decreased this year.

The **nonresident** persistence rate (94.7%), for all IU-Bloomington students returning to the Bloomington campus, has matched the record rate set in 2003-04. There are persistence rate increases at the undergraduate (95.6%), graduate, (95.0%), and nondegree (57.1%) levels. There is a rate decrease at the professional (98.3%) level.

Generally, persistence rates for nonresidents are higher than for residents. Tables 33 and 34 show historical persistence rates by residency for Bloomington.

TABLE 33: STUDENT PERSISTENCE RATES BY RESIDENCY - **RESIDENTS**
FALL TERM BASE POPULATION COMPARED WITH THE FOLLOWING SPRING TERM
ENROLLED AT IU-BLOOMINGTON

Year	Freshman	Sophomore	Junior	Senior	Undergraduate Total	Graduate Total	Professional	Nondegree	Total
1988-89	92.3%	92.5%	94.6%	91.0%	92.6%	86.6%	97.4%	53.3%	90.3%
1989-90	91.1%	92.8%	94.6%	90.6%	92.3%	86.2%	98.1%	52.0%	89.8%
1990-91	91.8%	92.9%	94.5%	89.7%	92.3%	86.0%	96.7%	50.0%	89.7%
1991-92	91.4%	92.8%	94.6%	90.9%	92.4%	88.8%	97.8%	52.2%	90.3%
1992-93	89.3%	92.1%	93.7%	90.9%	91.5%	87.8%	98.2%	47.8%	89.0%
1993-94	89.8%	91.9%	94.4%	90.2%	91.5%	90.0%	97.9%	49.8%	89.2%
1994-95	88.6%	91.2%	93.0%	90.1%	90.6%	89.0%	98.4%	44.3%	88.3%
1995-96	90.2%	91.1%	93.8%	90.6%	91.4%	90.1%	98.6%	43.5%	88.9%
1996-97	90.6%	92.4%	93.6%	91.2%	91.9%	88.6%	97.7%	41.5%	89.2%
1997-98	90.5%	91.7%	94.2%	92.0%	92.0%	89.2%	99.0%	45.1%	89.7%
1998-99	91.2%	92.5%	94.6%	91.6%	92.4%	88.2%	97.8%	41.4%	89.9%
1999-00	90.6%	92.7%	94.3%	91.0%	92.1%	87.7%	98.5%	40.1%	89.6%
2000-01	90.3%	92.3%	94.6%	91.6%	92.1%	86.9%	98.4%	38.9%	89.5%
2001-02	90.3%	94.2%	95.6%	92.9%	93.2%	87.4%	99.2%	39.5%	90.5%
2002-03	91.2%	92.6%	94.9%	93.4%	92.9%	88.2%	98.5%	37.8%	90.1%
2003-04	90.9%	93.8%	95.9%	93.5%	93.4%	89.0%	99.6%	55.0%	92.0%
2004-05	91.2%	93.8%	94.9%	93.9%	93.4%	91.3%	98.2%	55.3%	92.2%
2005-06	91.4%	93.2%	95.8%	93.5%	93.4%	91.3%	99.3%	52.6%	92.2%
2006-07	91.6%	94.0%	95.3%	93.7%	93.6%	91.4%	98.8%	55.8%	92.3%

Note: Shaded cells indicate record high rates.

TABLE 34: STUDENT PERSISTENCE RATES BY RESIDENCY - NON-RESIDENTS
FALL TERM BASE POPULATION COMPARED WITH THE FOLLOWING SPRING TERM
ENROLLED AT IU-BLOOMINGTON

Year	Freshman	Sophomore	Junior	Senior	Undergraduate Total	Graduate Total	Professional	Nondegree	Total
1988-89	97.1%	95.9%	94.4%	94.0%	95.4%	94.1%	99.4%	71.5%	94.3%
1989-90	95.6%	95.5%	94.5%	93.7%	94.9%	93.5%	98.3%	73.6%	93.9%
1990-91	96.0%	96.1%	94.6%	95.3%	95.5%	92.6%	95.6%	59.3%	93.2%
1991-92	96.1%	96.1%	94.1%	94.5%	95.2%	94.6%	97.7%	63.5%	93.8%
1992-93	95.9%	95.3%	95.2%	94.1%	95.1%	94.4%	99.2%	61.1%	93.5%
1993-94	96.2%	95.9%	94.4%	94.3%	95.2%	94.8%	96.4%	59.6%	93.4%
1994-95	94.9%	94.9%	93.5%	93.7%	94.3%	94.8%	98.4%	50.4%	92.3%
1995-96	95.1%	94.9%	92.5%	93.9%	94.1%	94.7%	97.6%	52.9%	92.3%
1996-97	94.7%	95.6%	92.0%	94.6%	94.3%	94.1%	97.2%	46.7%	91.9%
1997-98	94.9%	94.6%	92.3%	95.6%	94.4%	94.0%	98.3%	45.0%	91.9%
1998-99	95.2%	96.3%	91.4%	95.6%	94.7%	94.3%	98.0%	48.2%	92.9%
1999-00	95.1%	95.9%	91.3%	95.2%	94.5%	93.8%	98.1%	48.6%	92.7%
2000-01	94.6%	94.8%	88.9%	95.7%	93.6%	94.1%	96.1%	45.3%	91.7%
2001-02	95.1%	95.6%	96.7%	96.2%	95.8%	94.0%	98.0%	45.3%	93.5%
2002-03	95.2%	95.2%	96.8%	96.0%	95.8%	95.0%	96.2%	47.4%	94.2%
2003-04	94.5%	96.1%	96.9%	95.9%	95.8%	95.2%	97.8%	50.7%	94.7%
2004-05	94.1%	96.5%	96.8%	94.9%	95.5%	94.9%	98.5%	53.3%	94.5%
2005-06	93.9%	95.7%	97.6%	94.8%	95.5%	94.3%	99.6%	47.2%	94.2%
2006-07	95.1%	95.2%	96.6%	95.8%	95.6%	95.0%	98.3%	57.1%	94.7%

Note: Shaded cells indicate record high rates.

STUDENT SCHOOL

Table 35 shows historical **undergraduate** persistence rates by student school.

TABLE 35: UNDERGRADUATE STUDENT PERSISTENCE AND ATTRITION RATES BY SCHOOL
FALL TERM BASE POPULATION COMPARED WITH THE FOLLOWING SPRING TERM

Year	Arts and Sciences	Business	Continuing Studies	Education	HPER	Informatics	Journalism	Labor Studies	Medical Sciences	Music	Nursing	Optometry	SPEA	Social Work	UDIV
1981-82	94.2%	94.9%	85.3%	90.0%	90.2%	---	---	---	100.0%	92.9%	94.6%	---	94.9%	85.9%	92.6%
1982-83	94.4%	95.7%	79.4%	90.5%	90.5%	---	---	---	98.4%	94.1%	83.3%	---	94.1%	94.3%	93.5%
1983-84	93.9%	96.6%	80.0%	90.8%	90.0%	---	---	---	100.0%	93.2%	79.4%	---	94.1%	97.0%	94.6%
1984-85	93.4%	96.0%	73.1%	90.4%	90.8%	---	---	---	98.3%	93.6%	87.3%	---	93.6%	97.3%	92.8%
1985-86	93.3%	95.7%	74.6%	90.8%	91.8%	---	---	---	96.6%	93.2%	74.2%	---	92.6%	94.5%	91.6%
1986-87	93.3%	96.3%	80.5%	92.7%	90.6%	---	---	---	100.0%	94.3%	79.1%	---	92.2%	98.4%	91.9%
1987-88	93.9%	96.3%	76.5%	91.8%	93.6%	---	---	---	90.0%	92.3%	81.3%	96.2%	94.0%	94.1%	92.9%
1988-89	93.6%	96.7%	74.9%	93.3%	94.0%	---	---	---	100.0%	92.4%	84.7%	97.2%	93.4%	100.0%	93.2%
1989-90	93.3%	97.2%	76.0%	92.6%	94.0%	---	---	---	98.1%	93.3%	86.8%	100.0%	92.7%	100.0%	92.7%
1990-91	93.8%	96.9%	78.6%	90.7%	92.6%	---	---	---	92.2%	94.4%	83.0%	71.4%	94.7%	90.0%	93.0%
1991-92	93.8%	97.4%	79.9%	90.7%	92.3%	---	98.3%	---	50.0%	94.1%	83.2%	92.3%	95.3%	95.0%	92.9%
1992-93	94.0%	97.2%	74.8%	93.1%	92.9%	---	96.4%	---	100.0%	90.8%	76.0%	93.8%	95.3%	96.1%	91.6%
1993-94	93.5%	96.9%	78.6%	93.9%	94.1%	---	95.9%	---	100.0%	94.5%	76.6%	94.4%	94.0%	61.9%	91.6%
1994-95	93.0%	97.0%	75.2%	93.1%	93.7%	---	93.8%	---	100.0%	94.7%	75.2%	91.9%	95.3%	92.6%	90.1%
1995-96	93.5%	96.9%	77.2%	93.2%	94.0%	---	94.2%	---	100.0%	95.2%	72.9%	84.6%	95.4%	82.1%	90.8%
1996-97	93.5%	95.9%	80.0%	94.7%	92.2%	---	95.4%	---	100.0%	94.2%	72.3%	100.0%	95.2%	93.0%	91.7%
1997-98	93.6%	96.4%	80.6%	95.3%	92.3%	---	94.6%	---	100.0%	94.5%	68.1%	100.0%	95.9%	93.5%	91.3%
1998-99	93.8%	97.2%	76.4%	94.7%	93.8%	---	94.0%	---	---	93.9%	75.7%	100.0%	95.3%	91.4%	92.1%
1999-00	93.0%	96.4%	74.8%	94.8%	94.0%	---	95.8%	---	---	94.7%	72.6%	100.0%	94.8%	97.9%	92.1%
2000-01	93.1%	96.3%	76.8%	94.5%	93.2%	---	95.6%	85.7%	---	94.8%	78.1%	0.0%	94.4%	91.4%	91.7%
2001-02	95.1%	98.4%	80.8%	96.1%	96.4%	97.8%	96.0%	87.5%	---	96.9%	71.2%	80.0%	95.1%	93.9%	92.1%
2002-03	95.1%	97.9%	75.4%	95.9%	95.9%	98.7%	97.3%	66.7%	---	95.3%	98.1%	85.7%	94.9%	97.5%	91.9%
2003-04	95.1%	97.9%	75.6%	96.5%	96.7%	96.8%	98.7%	100.0%	---	96.8%	100.0%	50.0%	96.3%	100.0%	92.3%
2004-05	95.4%	98.2%	77.8%	97.5%	95.5%	95.3%	97.2%	72.7%	---	94.3%	94.8%	100.0%	95.0%	100.0%	91.7%
2005-06	95.0%	98.2%	81.7%	96.7%	95.3%	93.1%	98.3%	72.7%	---	96.1%	97.3%	75.0%	94.0%	94.4%	92.0%
2006-07	95.0%	97.8%	78.2%	96.2%	95.8%	92.9%	97.5%	83.3%	---	96.0%	98.6%	88.9%	95.6%	100.0%	92.6%

Notes:

Persistence is defined as re-enrollment at the original campus (from the fall term base population).

Data reflect end of third/first week of class (official reporting date) for fall terms.

Effective 1991, Journalism majors could register through Journalism or Arts and Sciences.

For Social Work and Nursing, the persistence rates vary because Indianapolis is the degree-granting campus.

The following table shows historical **total** student persistence rates by school.

TABLE 36: STUDENT PERSISTENCE RATES BY SCHOOL
FALL TERM BASE POPULATION COMPARED WITH THE FOLLOWING SPRING TERM

Year	Arts and Sciences	Business	Continuing Studies	Education	Graduate School	HPER	Informatics	Journalism	Labor Studies	Law	SLIS	Medical Sciences	Music	Nursing	Optometry	SPEA	Social Work	UDIV
1981-82	93.0%	95.1%	52.1%	82.2%	91.5%	88.1%	---	---	---	98.1%	84.7%	100.0%	92.9%	88.7%	98.3%	92.4%	83.6%	92.5%
1982-83	93.5%	94.8%	57.2%	85.1%	91.4%	89.1%	---	---	---	96.6%	83.1%	98.4%	92.2%	79.3%	97.9%	92.8%	94.4%	92.0%
1983-84	92.6%	95.8%	53.9%	84.6%	91.9%	87.4%	---	---	---	96.9%	79.4%	100.0%	92.8%	77.8%	99.3%	92.0%	95.5%	91.9%
1984-85	92.0%	95.8%	53.7%	83.4%	91.5%	87.1%	---	---	---	95.8%	80.4%	98.3%	92.3%	85.7%	99.3%	92.2%	96.1%	89.9%
1985-86	92.9%	95.6%	55.2%	81.9%	91.5%	91.6%	---	---	---	96.6%	79.7%	96.6%	92.6%	74.5%	97.6%	90.7%	94.5%	90.3%
1986-87	93.0%	96.0%	61.6%	85.0%	90.9%	89.5%	---	---	---	95.0%	79.8%	100.0%	93.5%	78.5%	97.5%	90.9%	98.4%	91.0%
1987-88	93.7%	95.6%	58.0%	86.3%	91.7%	92.1%	---	---	---	98.4%	81.1%	90.0%	91.0%	81.1%	98.2%	92.7%	94.1%	91.8%
1988-89	93.2%	96.2%	62.7%	87.2%	91.0%	92.4%	---	---	---	97.9%	81.1%	100.0%	91.1%	84.2%	98.3%	93.1%	100.0%	92.2%
1989-90	93.1%	97.1%	62.8%	86.6%	90.7%	91.7%	---	---	---	97.8%	73.1%	98.1%	91.4%	86.8%	99.2%	91.6%	100.0%	91.7%
1990-91	93.0%	97.0%	65.7%	85.9%	89.5%	91.5%	---	---	---	95.1%	78.1%	92.2%	91.4%	82.3%	98.1%	91.3%	90.6%	91.5%
1991-92	92.5%	97.4%	65.1%	86.3%	92.5%	91.0%	---	98.3%	---	97.2%	79.9%	50.0%	92.6%	82.6%	99.3%	91.7%	95.0%	91.9%
1992-93	92.7%	96.5%	61.5%	88.2%	91.9%	92.2%	---	96.4%	---	97.9%	79.1%	100.0%	91.1%	75.5%	99.3%	93.5%	96.1%	90.0%
1993-94	91.6%	96.6%	64.9%	88.4%	92.7%	92.5%	---	95.7%	---	96.0%	86.4%	100.0%	93.2%	76.5%	99.7%	94.0%	61.9%	90.0%
1994-95	90.2%	96.3%	62.8%	86.7%	92.7%	92.1%	---	93.8%	---	98.2%	87.3%	100.0%	92.6%	75.2%	98.1%	93.8%	92.6%	88.5%
1995-96	90.2%	96.1%	65.1%	88.8%	92.8%	93.0%	---	94.2%	---	98.0%	85.8%	100.0%	93.5%	72.8%	97.1%	94.0%	82.1%	88.8%
1996-97	89.6%	95.3%	66.7%	89.3%	91.7%	91.2%	---	95.4%	---	97.1%	85.7%	100.0%	93.0%	72.3%	98.3%	94.5%	93.0%	89.5%
1997-98	89.8%	95.7%	67.1%	91.0%	91.6%	91.8%	---	94.6%	---	97.9%	88.4%	100.0%	92.9%	68.4%	99.3%	95.4%	93.5%	89.5%
1998-99	91.8%	96.6%	67.9%	88.0%	91.8%	92.5%	---	94.0%	---	96.4%	86.5%	---	92.7%	75.9%	98.7%	94.2%	91.4%	90.0%
1999-00	91.2%	96.2%	66.8%	87.4%	91.0%	92.6%	---	95.8%	---	97.4%	85.0%	---	93.6%	72.0%	98.4%	94.8%	97.9%	89.9%
2000-01	90.8%	95.6%	68.1%	85.4%	91.6%	91.8%	---	95.6%	85.7%	95.3%	83.0%	---	93.3%	77.6%	97.3%	94.7%	91.7%	90.3%
2001-02	93.7%	97.3%	71.6%	89.4%	91.1%	93.3%	96.2%	96.0%	87.5%	96.6%	82.6%	---	93.9%	71.2%	98.4%	94.5%	94.1%	89.7%
2002-03	94.1%	97.0%	67.1%	88.4%	92.2%	93.5%	97.9%	97.3%	66.7%	94.9%	86.7%	---	94.1%	97.2%	99.0%	94.6%	97.6%	89.5%
2003-04	94.3%	97.1%	68.8%	89.8%	92.9%	94.8%	95.7%	98.7%	100.0%	97.6%	90.6%	---	95.7%	100.0%	99.3%	96.0%	100.0%	92.2%
2004-05	94.6%	97.7%	70.9%	90.4%	92.8%	94.6%	94.8%	97.2%	72.7%	96.7%	92.5%	---	93.4%	94.8%	98.1%	95.2%	100.0%	91.6%
2005-06	94.1%	97.7%	74.4%	88.2%	91.9%	93.8%	92.5%	98.2%	72.7%	97.0%	93.1%	---	94.3%	97.3%	98.5%	94.5%	94.4%	91.8%
2006-07	94.4%	97.4%	69.9%	86.3%	93.3%	95.1%	93.5%	97.5%	83.3%	94.8%	89.6%	---	94.4%	98.0%	99.4%	95.8%	100.0%	92.4%

Notes:

Persistence is defined as re-enrollment at the original campus (from the fall term base population).

Data reflect end of third/first week of class (official reporting date) for fall terms.

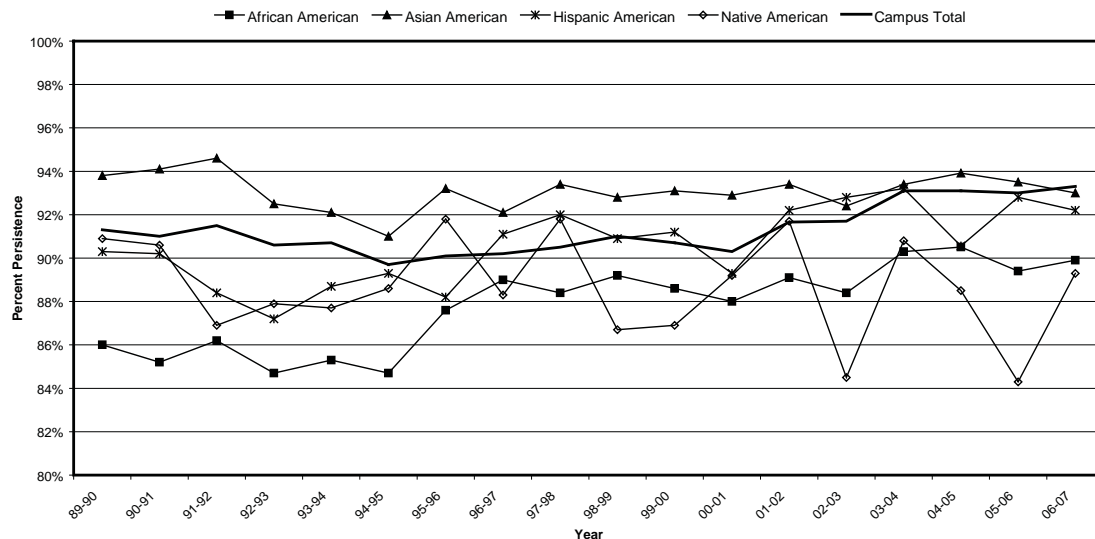
Effective 1991, Journalism majors could register through Journalism or Arts and Sciences.

For Social Work and Nursing, the persistence rates vary because Indianapolis is the degree-granting campus.

ETHNIC GROUP & GENDER

Persistence rates for U.S. Minority students are displayed in the figure below. Both **female** and **male** students show increases this year to 93.3% and 93.2% respectively.

FIGURE 10: MINORITY PERSISTENCE RATES



For students returning to the Bloomington campus, **African American** students show an overall persistence rate increase to 89.9% this year and 90.5% at the undergraduate level. **Asian American** persistence rates show decreases to 93.0% and 94.1% at the undergraduate level. The persistence rate for **Hispanic American** students also decreased at both the undergraduate level (92.0%) and campus total (92.2%). **Native Americans** show an increase in their persistence rate to 89.5% this year with an increase in the undergraduate rate (to 88.7%) as well. The rates for international students show increases this year at 92.6% (a record figure this year) and 94.0% at the undergraduate level.

Table 37 shows persistence data for Bloomington students by ethnic group and gender. Comparisons should be made with caution due to the small size of the ethnic populations, especially the Native American population.

TABLE 37: HISTORICAL PERSISTENCE RATES BY ETHNIC GROUP AND GENDER
FALL TERM BASE POPULATION COMPARED WITH THE FOLLOWING SPRING TERM

Undergraduate

Year	ETHNIC GROUPS							GENDER		CAMPUS TOTAL
	African American	Asian American	Hispanic American	Native American	White American	Other American	Non U.S. Students	Female	Male	
1988-89										91.7%
1989-90	85.8%	94.4%	90.3%	90.3%	93.4%	91.0%	92.9%	91.0%	91.6%	91.3%
1990-91	85.7%	95.5%	91.7%	91.4%	93.5%	93.4%	94.2%	90.3%	91.7%	91.0%
1991-92	85.7%	96.9%	88.4%	87.0%	93.5%	94.0%	94.0%	91.4%	91.7%	91.5%
1992-93	83.5%	93.7%	87.1%	93.8%	93.0%	90.7%	94.6%	89.9%	91.4%	90.6%
1993-94	84.5%	93.6%	90.2%	96.2%	92.8%	92.0%	93.0%	90.1%	91.3%	90.7%
1994-95	83.2%	94.2%	88.8%	91.2%	92.0%	90.0%	91.4%	89.5%	89.9%	89.7%
1995-96	86.5%	95.0%	88.2%	91.7%	92.4%	92.4%	92.8%	90.1%	90.2%	90.1%
1996-97	88.7%	93.1%	90.5%	89.3%	92.7%	92.7%	94.6%	89.9%	90.4%	90.2%
1997-98	88.9%	94.2%	91.3%	92.1%	92.7%	94.7%	94.2%	90.3%	90.7%	90.5%
1998-99	90.4%	92.5%	91.1%	86.8%	93.2%	92.3%	93.1%	90.9%	91.1%	91.0%
1999-00	88.7%	94.1%	91.8%	86.3%	92.9%	92.1%	94.3%	90.6%	90.8%	90.7%
2000-01	88.5%	94.4%	90.1%	88.6%	92.7%	93.8%	95.0%	90.2%	90.5%	90.3%
2001-02	89.6%	95.0%	92.4%	93.3%	94.2%	92.7%	94.5%	91.6%	91.8%	91.7%
2002-03	89.6%	93.9%	93.4%	89.1%	94.0%	93.6%	94.8%	91.9%	91.3%	91.7%
2003-04	90.5%	95.2%	93.5%	91.8%	94.4%	90.2%	94.7%	94.5%	93.9%	93.1%
2004-05	90.7%	95.3%	91.4%	89.2%	94.4%	NA	93.5%	94.6%	93.6%	94.1%
2005-06	89.1%	94.4%	93.3%	84.6%	94.5%	91.5%	92.3%	94.4%	93.7%	94.1%
2006-07	90.5%	94.1%	92.0%	88.7%	94.6%	90.7%	94.0%	94.6%	93.9%	94.3%

Total

Year	ETHNIC GROUPS							GENDER		CAMPUS TOTAL
	African American	Asian American	Hispanic American	Native American	White American	Other American	Non U.S. Students	Female	Male	
1988-89										91.7%
1989-90	86.0%	93.8%	90.3%	90.9%	92.0%	87.0%	89.3%	91.0%	91.6%	91.3%
1990-91	85.2%	94.1%	90.2%	90.6%	91.9%	90.1%	87.9%	90.3%	91.7%	91.0%
1991-92	86.2%	94.6%	88.4%	86.9%	92.2%	91.3%	89.0%	91.4%	91.7%	91.5%
1992-93	84.7%	92.5%	87.2%	87.9%	91.1%	89.4%	87.4%	89.9%	91.4%	90.6%
1993-94	85.3%	92.1%	88.7%	87.7%	91.2%	91.8%	86.2%	90.1%	91.3%	90.7%
1994-95	84.7%	91.0%	89.3%	88.6%	90.6%	91.6%	82.9%	89.5%	89.9%	89.7%
1995-96	87.6%	93.2%	88.2%	91.8%	90.6%	91.6%	82.9%	90.1%	90.2%	90.1%
1996-97	89.0%	92.1%	91.1%	88.3%	90.6%	91.6%	83.8%	89.9%	90.4%	90.2%
1997-98	88.4%	93.4%	92.0%	91.8%	90.9%	93.1%	84.3%	90.3%	90.7%	90.5%
1998-99	89.2%	92.8%	90.9%	86.7%	91.4%	91.8%	86.6%	90.9%	91.1%	91.0%
1999-00	88.6%	93.1%	91.2%	86.9%	91.0%	91.1%	88.0%	90.6%	90.8%	90.7%
2000-01	88.0%	92.9%	89.3%	89.2%	90.6%	93.7%	87.5%	90.2%	90.5%	90.3%
2001-02	89.1%	93.4%	92.2%	91.7%	92.0%	91.4%	89.2%	91.6%	91.8%	91.7%
2002-03	88.4%	92.4%	92.8%	84.5%	91.9%	91.2%	91.1%	91.9%	91.3%	91.7%
2003-04	90.3%	93.4%	93.2%	90.8%	93.4%	89.4%	92.2%	93.2%	93.0%	93.1%
2004-05	90.5%	93.9%	90.6%	88.5%	93.6%	NA	91.9%	93.2%	93.1%	93.1%
2005-06	89.4%	93.5%	92.8%	84.3%	93.5%	91.4%	91.8%	93.1%	92.9%	93.0%
2006-07	89.9%	93.0%	92.2%	89.5%	93.7%	90.1%	92.6%	93.3%	93.2%	93.3%

Note: Shaded cells indicate record high rates.

For a more in-depth analysis of Bloomington campus student persistence rates, refer to the report, *Year-to-Year Student Persistence and Attrition Profile* published by the Office of the Registrar.