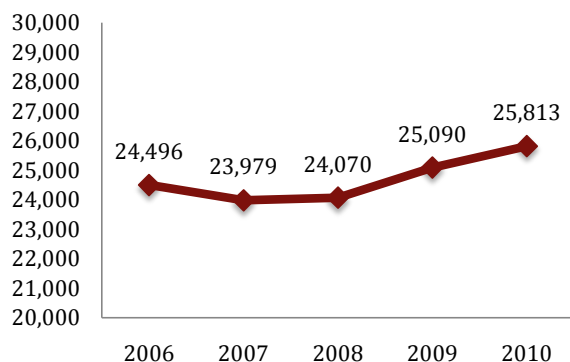
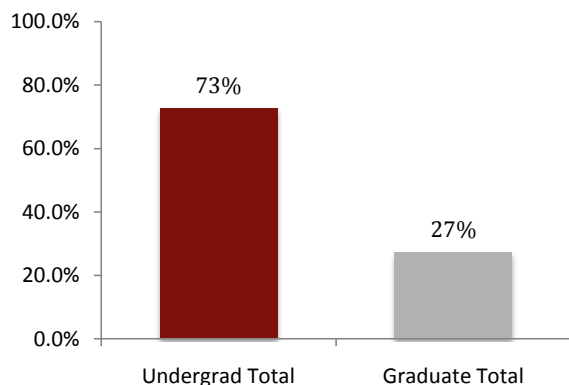
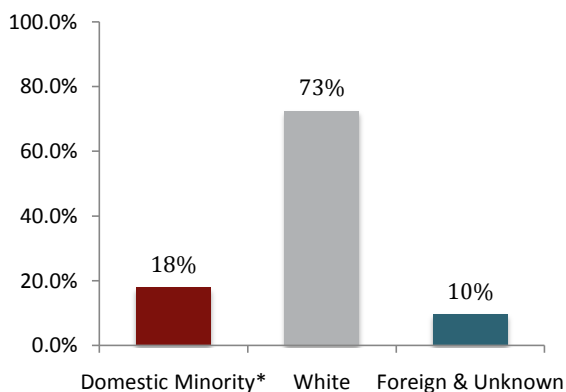


**IU Historical Enrollment
Second Summer Session**

IU Enrollment By Level

IU Enrollment By Ethnicity & Race


* Includes Hispanic/Latino, African American, American Indian/Alaska Native, Asian American, Native Hawaiian/Pacific Islander and Two or More Races

University Enrollment Summary

	Count	% of total	% change ¹
Headcount	25,813		2.9%
Credit Hours	103,563.0		4.1%
FTE	7,323.0		3.8%

Students By Level and Class

Undergrad Total	18,779	72.8%	5.8%
Degree-seeking	16,804	65.1%	6.2%
Non-Degree	1,975	7.7%	3.1%
Graduate Total	7,034	27.2%	-4.3%
Grad Degree-seeking	4,553	17.6%	5.0%
Doctoral-Research	964	3.7%	3.5%
Doctoral-Practice	273	1.1%	-29.8%
Non-Degree	1,244	4.8%	-26.3%

Freshman	2,164	12.9%	-4.3%
Sophomore	3,202	19.1%	7.4%
Junior	4,006	23.8%	7.7%
Senior	7,432	44.2%	8.2%

Undergraduates By Courseload²

FT-UG	5,259	31.3%	9.7%
PT-UG	11,545	68.7%	4.6%

Sex

Male	11,036	42.8%	4.4%
Female	14,777	57.2%	1.8%

Ethnicity & Races

Hispanic/Latino	962	3.7%	31.6%
African American	2,374	9.2%	6.6%
Am. Ind./Alaska Nat.	77	0.3%	-4.9%
Asian American	908	3.5%	10.2%
Nat. Haw./Pac. Islnd.	12	0.0%	-7.7%
White	18,719	72.5%	0.5%
Foreign	1,642	6.4%	3.1%
Unknown	828	3.2%	-17.4%
Two or More Races	291	1.1%	n/a

Residency

Resident	20,038	77.6%	1.0%
Non-Resident	5,775	22.4%	9.8%
Reciprocity ³	909	15.7%	2.4%

¹ Compared with Second Summer Session, 2009

² Degree-seeking only

³ Portion of non-resident enrollments that are reciprocity

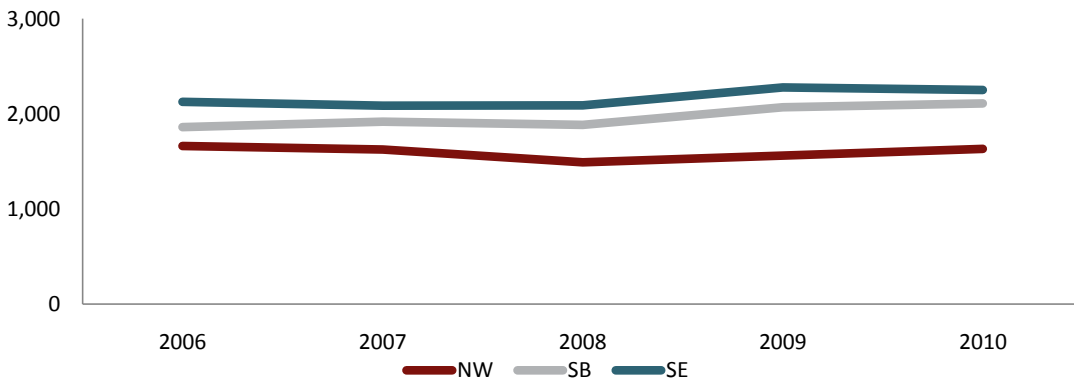
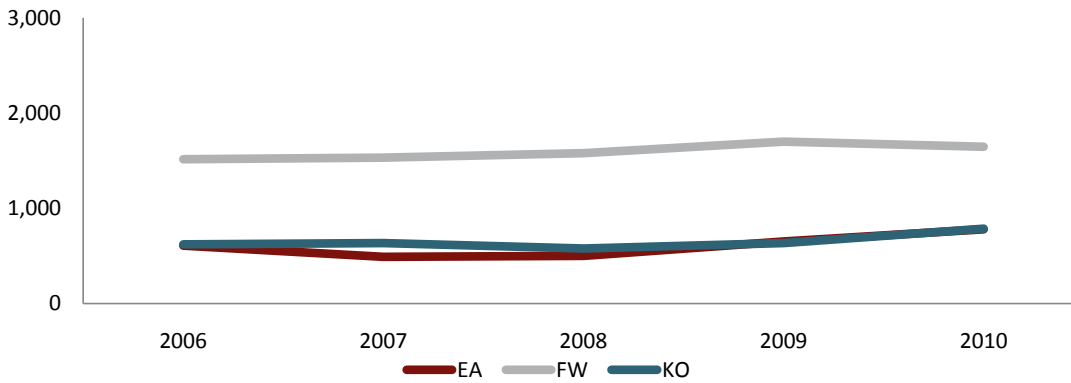
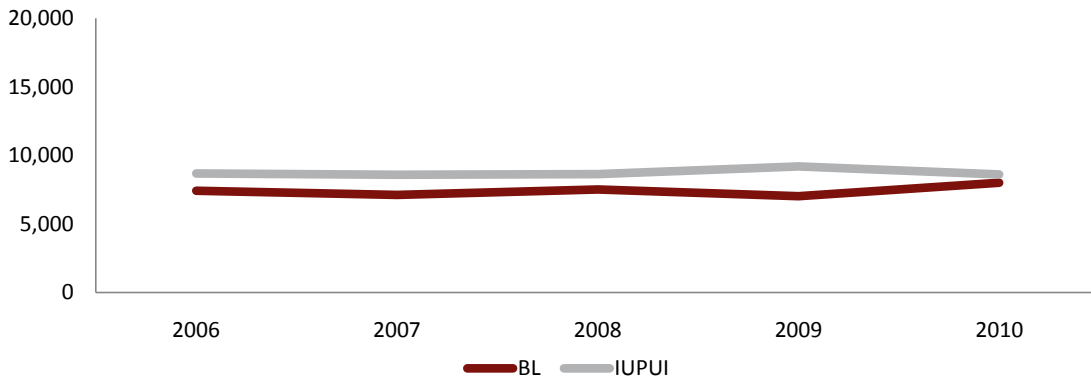
Campus Enrollment Summary

	Headcount			Credit Hours			FTE		
	Count	%	%	Count	%	%	Count	%	%
		of total	change ¹		of total	change ¹		of total	change ¹
Bloomington	8,007	31.0%	14.1%	33,570.5	32.4%	14.5%	2,447.0	33.4%	16.6%
Indianapolis	8,610	33.4%	-6.3%	33,583.5	32.4%	-6.4%	2,349.3	32.1%	-8.1%
East	779	3.0%	19.8%	3,226.0	3.1%	19.9%	218.8	3.0%	18.8%
Fort Wayne*	1,645	6.4%	-3.2%	6,515.0	6.3%	-0.9%	455.0	6.2%	-2.0%
Kokomo	785	3.0%	23.6%	3,111.0	3.0%	33.9%	211.2	2.9%	33.3%
Northwest	1,630	6.3%	4.6%	6,637.0	6.4%	7.6%	460.4	6.3%	6.2%
South Bend	2,108	8.2%	2.0%	7,873.0	7.6%	2.6%	546.7	7.5%	1.7%
Southeast	2,249	8.7%	-1.2%	9,047.0	8.7%	2.8%	634.7	8.7%	1.6%

¹ Compared with Second Summer Session, 2009

* IU students only

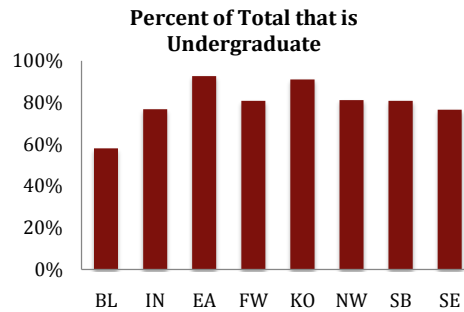
Campus Historical Second Summer Session Enrollment



Campus Enrollment Summary

Level of Enrollment (including non-degree)

	Undergraduate			Graduate		
	Count	% of campus		Count	% of campus	
		total	change ¹		total	change ¹
Bloomington	4,651	58.1%	3.4%	3,356	41.9%	33.4%
Indianapolis	6,613	76.8%	3.9%	1,997	23.2%	-29.2%
East	722	92.7%	24.5%	57	7.3%	-18.6%
Fort Wayne*	1,329	80.8%	2.2%	316	19.2%	-20.6%
Kokomo	715	91.1%	26.1%	70	8.9%	2.9%
Northwest	1,323	81.2%	12.6%	307	18.8%	-20.1%
South Bend	1,704	80.8%	7.4%	404	19.2%	-16.0%
Southeast	1,722	76.6%	3.2%	527	23.4%	-13.3%

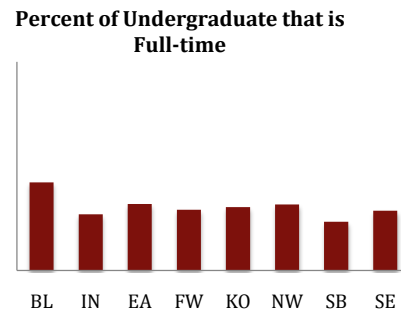


Undergraduates by Class[†]

	Freshman			Sophomore			Junior			Senior		
	Count	% of campus		Count	% of campus		Count	% of campus		Count	% of campus	
		total	change ¹		total	change ¹		total	change ¹		total	change ¹
Bloomington	597	14.9%	-9.7%	424	10.6%	13.1%	1,036	25.8%	0.2%	1,953	48.7%	2.6%
Indianapolis	381	6.5%	-14.6%	1,193	20.5%	7.3%	1,367	23.5%	7.2%	2,883	49.5%	7.0%
East	97	14.1%	-2.0%	155	22.6%	10.7%	184	26.8%	27.8%	250	36.4%	43.7%
Fort Wayne*	238	14.5%	5.8%	245	14.9%	-13.1%	269	16.4%	6.7%	507	30.8%	7.9%
Kokomo	103	13.1%	-8.0%	151	19.2%	32.5%	124	15.8%	22.8%	277	35.3%	45.8%
Northwest	265	16.3%	31.8%	338	20.7%	17.8%	253	15.5%	1.6%	412	25.3%	12.3%
South Bend	271	12.9%	0.0%	362	17.2%	5.5%	332	15.7%	19.0%	508	24.1%	13.1%
Southeast	212	9.4%	-14.2%	334	14.9%	2.1%	441	19.6%	14.8%	642	28.5%	3.5%

Undergraduate Enrollment Status[†]

	Full-time Undergrad			Part-time Undergrad		
	Count	% of campus		Count	% of campus	
		total	change ¹		total	change ¹
Bloomington	1,692	42.2%	0.3%	2,318	57.8%	1.4%
Indianapolis	1,571	27.0%	4.6%	4,253	73.0%	5.7%
East	219	31.9%	17.7%	467	68.1%	25.9%
Fort Wayne*	366	29.1%	23.6%	893	70.9%	-4.3%
Kokomo	199	30.4%	89.5%	456	69.6%	10.7%
Northwest	401	31.6%	24.1%	867	68.4%	11.0%
South Bend	344	23.4%	4.9%	1,129	76.6%	11.3%
Southeast	467	28.7%	27.2%	1,162	71.3%	-4.0%



¹ Compared with Second Summer Session, 2009

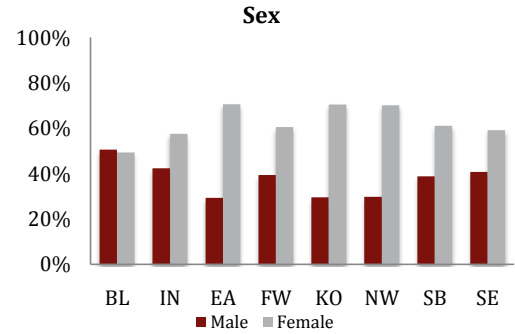
*IU students only

† Degree-seeking only

Campus Enrollment Summary

Sex

	Male			Female		
	Count	% of campus		Count	% of campus	
		total	change ¹		total	change ¹
Bloomington	4,056	50.7%	18.7%	3,951	49.3%	9.8%
Indianapolis	3,648	42.4%	-8.4%	4,962	57.6%	-4.7%
East	229	29.4%	21.2%	550	70.6%	19.3%
Fort Wayne*	649	39.5%	4.0%	996	60.5%	-7.3%
Kokomo	232	29.6%	8.9%	553	70.4%	31.0%
Northwest	486	29.8%	-2.6%	1,144	70.2%	7.9%
South Bend	819	38.9%	5.8%	1,289	61.1%	-0.3%
Southeast	917	40.8%	5.4%	1,332	59.2%	-5.3%



Ethnicity & Race

	Hispanic/Latino			African American		
	Count	% of campus		Count	% of campus	
		total	change ¹		total	change ¹
Bloomington	249	3.1%	45.6%	553	6.9%	1.5%
Indianapolis	284	3.3%	40.6%	873	10.1%	4.4%
East	14	1.8%	40.0%	42	5.4%	90.9%
Fort Wayne*	58	3.5%	65.7%	117	7.1%	13.6%
Kokomo	18	2.3%	-10.0%	45	5.7%	45.2%
Northwest	189	11.6%	19.6%	407	25.0%	10.3%
South Bend	105	5.0%	4.0%	178	8.4%	15.6%
Southeast	45	2.0%	32.4%	159	7.1%	-4.2%

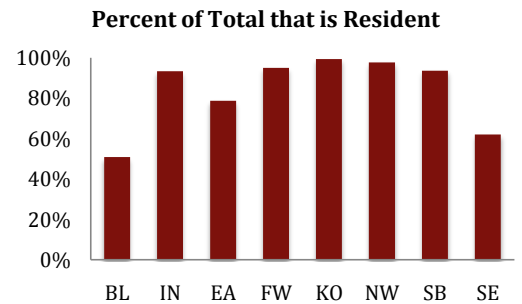
Residency

	Resident		
	Count	% of campus	
		total	change ¹
Bloomington	4,075	50.9%	0.1%
Indianapolis	8,038	93.4%	-0.4%
East	614	78.8%	14.6%
Fort Wayne*	1,564	95.1%	-3.9%
Kokomo	781	99.5%	23.6%
Northwest	1,594	97.8%	4.2%
South Bend	1,975	93.7%	2.4%
Southeast	1,397	62.1%	-2.8%

	American Indian/Alaska Native			Asian American		
	Count	% of campus		Count	% of campus	
		total	change ¹		total	change ¹
Bloomington	20	0.2%	-16.7%	386	4.8%	37.9%
Indianapolis	18	0.2%	5.9%	360	4.2%	-7.0%
East	2	0.3%	-60.0%	5	0.6%	-37.5%
Fort Wayne*	6	0.4%	-45.5%	32	1.9%	-3.0%
Kokomo	2	0.3%	-60.0%	6	0.8%	-25.0%
Northwest	9	0.6%	50.0%	45	2.8%	4.7%
South Bend	9	0.4%	12.5%	38	1.8%	46.2%
Southeast	11	0.5%	120.0%	36	1.6%	-7.7%

	Non-resident		
	Count	% of campus	
		total	change ¹
Bloomington	3,932	49.1%	33.6%
Indianapolis	572	6.6%	-48.9%
East	165	21.2%	44.7%
Fort Wayne*	81	4.9%	14.1%
Kokomo	4	0.5%	33.3%
Northwest	36	2.2%	24.1%
South Bend	133	6.3%	-4.3%
Southeast	852	37.9%	1.4%

	Native Hawaiian/Pacific Islander			Two or More Races		
	Count	% of campus		Count	% of campus	
		total	change ¹		total	change ¹
Bloomington	1	0.0%	-66.7%	104	1.3%	n/a
Indianapolis	5	0.1%	0.0%	88	1.0%	n/a
East	1	0.1%	n/a	7	0.9%	n/a
Fort Wayne*	0	0.0%	n/a	13	0.8%	n/a
Kokomo	0	0.0%	n/a	9	1.1%	n/a
Northwest	1	0.1%	-50.0%	13	0.8%	n/a
South Bend	1	0.0%	0.0%	26	1.2%	n/a
Southeast	3	0.1%	50.0%	31	1.4%	n/a



¹ Compared with Second Summer Session, 2009

*IU students only