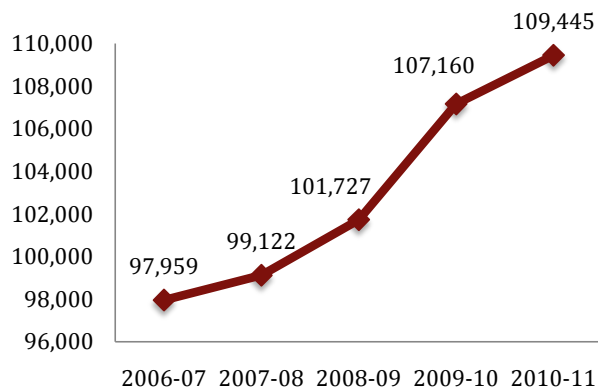
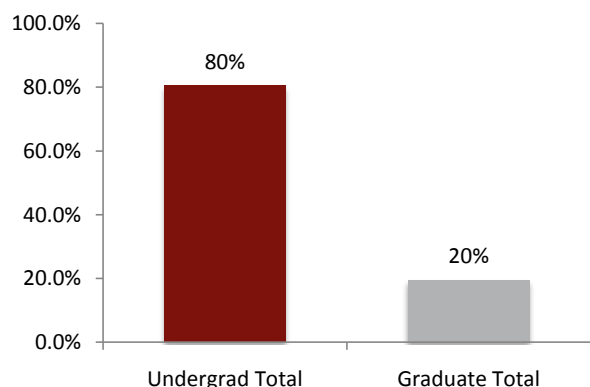
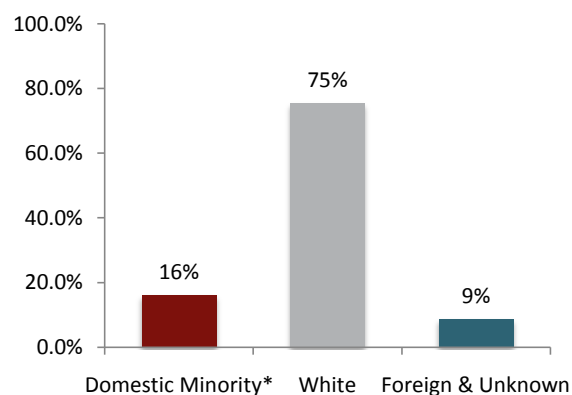


**IU Historical Enrollment
First Semester**

IU Enrollment By Level

IU Enrollment By Ethnicity & Race


* Includes Hispanic/Latino, African American, American Indian/Alaska Native, Asian American, Native Hawaiian/Pacific Islander and Two or More Races

University Enrollment Summary

	Count	% of total	% change ¹
Headcount	109,445		2.1%
Credit Hours	1,277,400.0		2.2%
FTE	87,383.2		2.1%

Students By Level and Class

Undergrad Total	88,067	80.5%	2.6%
Degree-seeking	81,894	74.8%	1.7%
Non-Degree	6,173	5.6%	17.4%
Graduate Total	21,378	19.5%	0.1%
Grad Degree-seeking	11,725	10.7%	0.3%
Doctoral-Research	11,725	10.7%	0.3%
Doctoral-Practice	3,727	3.4%	2.6%
Non-Degree	1,667	1.5%	-8.7%
Freshman	22,269	27.2%	-4.6%
Sophomore	19,434	23.7%	0.9%
Junior	17,177	21.0%	6.4%
Senior	23,014	28.1%	5.6%

Undergraduates By Courseload²

FT-UG	66,781	81.5%	2.3%
PT-UG	15,113	18.5%	-0.8%

Sex

Male	48,272	44.1%	2.4%
Female	61,173	55.9%	1.9%

Ethnicity & Race

Hispanic/Latino	4,339	4.0%	27.2%
African American	7,951	7.3%	3.4%
Am. Ind./Alaska Nat.	277	0.3%	-16.6%
Asian American	3,409	3.1%	0.9%
Nat. Haw./Pac. Islnd.	71	0.1%	2.9%
White	82,549	75.4%	1.1%
Foreign	6,567	6.0%	7.6%
Unknown	2,825	2.6%	-37.6%
Two or More Races	1,457	1.3%	n/a

Residency

Resident	84,186	76.9%	2.4%
Non-Resident	25,259	23.1%	1.3%
Reciprocity ³	2,567	10.2%	7.5%

¹ Compared with First Semester, 2009-10

² Degree-seeking only

³ Portion of non-resident enrollments that are reciprocity

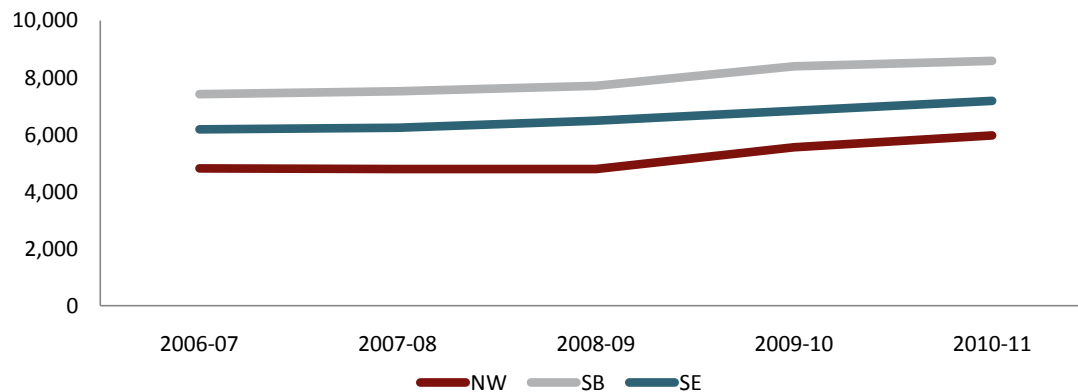
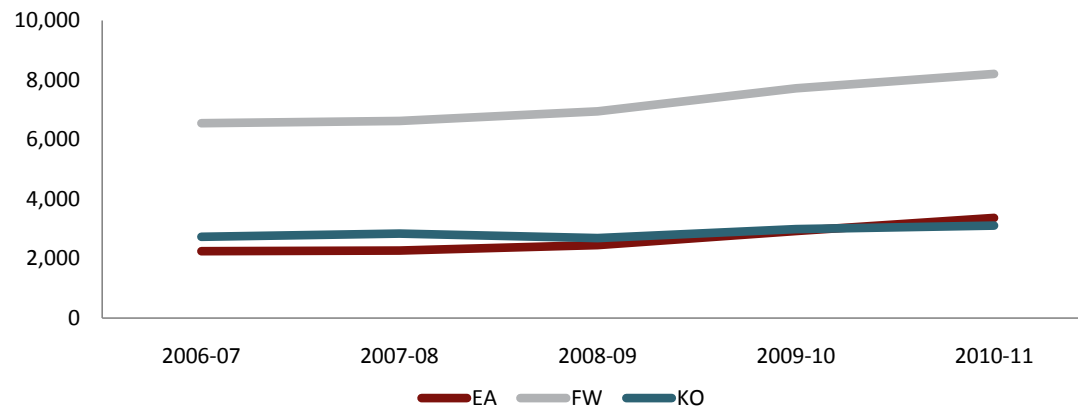
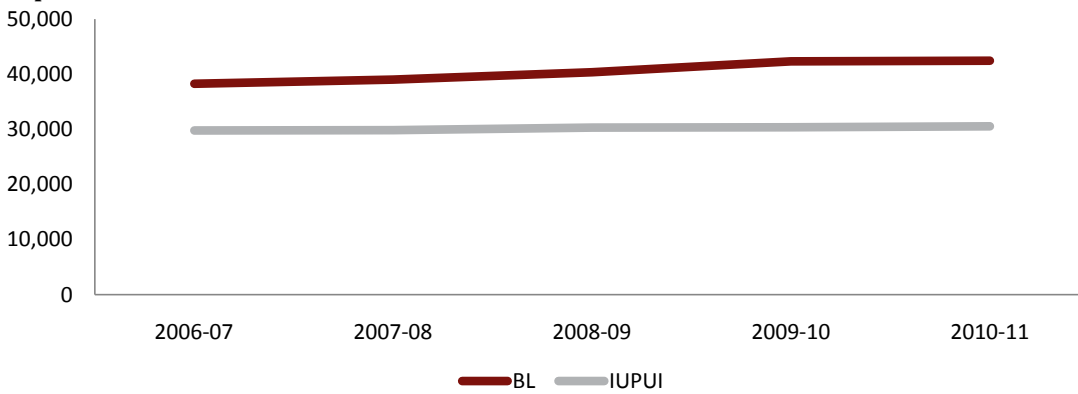
Campus Enrollment Summary

	Headcount			Credit Hours			FTE		
	Count	%	%	Count	%	%	Count	%	%
		of total	change ¹		of total	change ¹		of total	change ¹
Bloomington	42,464	38.8%	0.3%	567,486.0	44.4%	0.1%	39,122.7	44.8%	0.2%
IUPUI	30,566	27.9%	0.6%	345,115.5	27.0%	1.5%	23,656.8	27.1%	1.5%
East	3,365	3.1%	15.1%	33,411.5	2.6%	15.5%	2,236.0	2.6%	15.4%
Fort Wayne*	8,204	7.5%	6.3%	82,379.0	6.4%	5.0%	5,540.9	6.3%	4.9%
Kokomo	3,109	2.8%	3.9%	30,507.0	2.4%	3.9%	2,047.5	2.3%	3.7%
Northwest	5,969	5.5%	7.4%	61,854.0	4.8%	8.6%	4,193.5	4.8%	8.4%
South Bend	8,590	7.8%	2.3%	83,323.0	6.5%	3.5%	5,636.5	6.5%	3.3%
Southeast	7,178	6.6%	4.9%	73,324.0	5.7%	5.8%	4,949.2	5.7%	5.6%

¹ Compared with First Semester, 2009-10

* IU students only

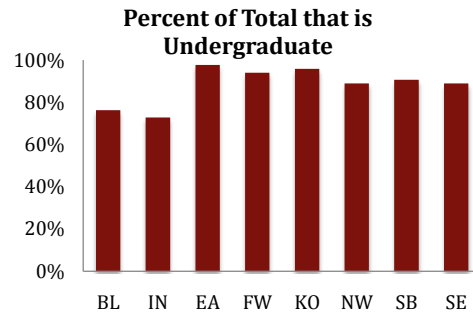
Campus Historical First Semester Enrollment



Campus Enrollment Summary

Level of Enrollment (including non-degree)

	Undergraduate			Graduate		
	% of campus		change ¹	% of campus		change ¹
	Count	total		Count	total	
Bloomington	32,367	76.2%	-0.4%	10,097	23.8%	2.4%
IUPUI	22,245	72.8%	0.6%	8,321	27.2%	0.7%
East	3,285	97.6%	16.2%	80	2.4%	-17.5%
Fort Wayne*	7,711	94.0%	7.2%	493	6.0%	-6.1%
Kokomo	2,978	95.8%	4.6%	131	4.2%	-9.0%
Northwest	5,307	88.9%	8.8%	662	11.1%	-2.8%
South Bend	7,790	90.7%	3.9%	800	9.3%	-10.9%
Southeast	6,384	88.9%	7.4%	794	11.1%	-11.5%

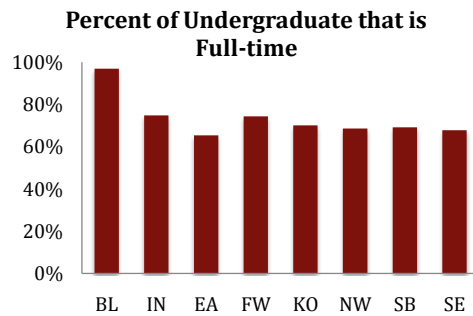


Undergraduates by Class[†]

	Freshman			Sophomore			Junior			Senior		
	% of campus		change ¹	% of campus		change ¹	% of campus		change ¹	% of campus		change ¹
	Count	total		Count	total		Count	total		Count	total	
Bloomington	7,546	23.7%	-4.7%	7,918	24.8%	-2.7%	7,627	23.9%	3.7%	8,801	27.6%	2.4%
IUPUI	4,721	22.3%	-6.6%	4,845	22.9%	-0.5%	4,425	20.9%	4.9%	7,211	34.0%	6.3%
East	737	28.0%	-5.4%	579	22.0%	4.3%	577	22.0%	14.5%	735	28.0%	21.3%
Fort Wayne*	2,413	29.4%	-4.1%	1,394	17.0%	6.8%	968	11.8%	12.2%	1,502	18.3%	-1.9%
Kokomo	748	24.1%	-8.0%	572	18.4%	6.7%	470	15.1%	15.8%	643	20.7%	8.1%
Northwest	1,954	32.7%	3.1%	1,238	20.7%	13.1%	735	12.3%	13.8%	1,024	17.2%	14.5%
South Bend	2,230	26.0%	-7.9%	1,509	17.6%	3.4%	1,129	13.1%	6.6%	1,582	18.4%	11.3%
Southeast	1,920	26.7%	-0.9%	1,379	19.2%	4.9%	1,246	17.4%	13.2%	1,516	21.1%	11.2%

Undergraduate Enrollment Status[†]

	Full-time Undergrad			Part-time Undergrad		
	% of campus		change ¹	% of campus		change ¹
	Count	total		Count	total	
Bloomington	30,888	96.9%	-0.3%	1,004	3.1%	-1.3%
IUPUI	15,847	74.7%	2.2%	5,355	25.3%	-1.3%
East	1,716	65.3%	13.6%	912	34.7%	-2.3%
Fort Wayne*	4,662	74.3%	3.3%	1,615	25.7%	-5.2%
Kokomo	1,704	70.0%	10.1%	729	30.0%	-9.1%
Northwest	3,395	68.6%	10.7%	1,556	31.4%	6.3%
South Bend	4,459	69.1%	3.8%	1,991	30.9%	-3.5%
Southeast	4,110	67.8%	5.8%	1,951	32.2%	6.6%



¹ Compared with First Semester, 2009-10

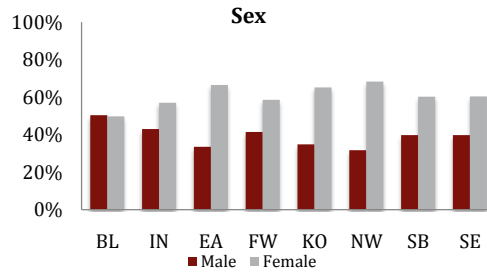
* IU students only

† Degree-seeking only

Campus Enrollment Summary

Sex

	Male			Female		
	Count	% of campus		Count	% of campus	
		total	change ¹		total	change ¹
Bloomington	21,369	50.3%	-0.1%	21,095	49.7%	0.6%
IUPUI	13,135	43.0%	1.8%	17,431	57.0%	-0.3%
East	1,128	33.5%	17.3%	2,237	66.5%	14.0%
Fort Wayne*	3,400	41.4%	5.8%	4,804	58.6%	6.6%
Kokomo	1,082	34.8%	1.9%	2,027	65.2%	5.0%
Northwest	1,894	31.7%	7.6%	4,075	68.3%	7.3%
South Bend	3,414	39.7%	7.3%	5,176	60.3%	-0.7%
Southeast	2,850	39.7%	6.4%	4,328	60.3%	4.0%



Ethnicity & Race - Domestic Minority

	Hispanic/Latino			African American		
	Count	% of campus		Count	% of campus	
		total	change ¹		total	change ¹
Bloomington	1,416	3.3%	28.8%	1,851	4.4%	-1.7%
IUPUI	998	3.3%	25.5%	2,806	9.2%	2.3%
East	52	1.5%	57.6%	119	3.5%	3.5%
Fort Wayne*	314	3.8%	25.1%	588	7.2%	12.6%
Kokomo	90	2.9%	28.6%	159	5.1%	1.3%
Northwest	840	14.1%	28.0%	1,378	23.1%	9.2%
South Bend	477	5.6%	22.6%	606	7.1%	1.8%
Southeast	152	2.1%	27.7%	444	6.2%	6.7%

Ethnicity & Race - Other

	White		
	Count	% of campus	
		total	change ¹
Bloomington	31,371	73.9%	-1.7%
IUPUI	22,565	73.8%	0.3%
East	3,031	90.1%	16.0%
Fort Wayne*	6,764	82.4%	4.8%
Kokomo	2,619	84.2%	2.8%
Northwest	3,344	56.0%	5.3%
South Bend	6,729	78.3%	1.9%
Southeast	6,126	85.3%	5.1%

	American Indian/Alaska Native			Asian American		
	Count	% of campus		Count	% of campus	
		total	change ¹		total	change ¹
Bloomington	97	0.2%	-19.8%	1,718	4.0%	-2.8%
IUPUI	67	0.2%	-14.1%	1,159	3.8%	3.7%
East	5	0.1%	-50.0%	22	0.7%	15.8%
Fort Wayne*	31	0.4%	10.7%	130	1.6%	-0.8%
Kokomo	10	0.3%	-16.7%	41	1.3%	2.5%
Northwest	17	0.3%	-22.7%	119	2.0%	7.2%
South Bend	26	0.3%	-16.1%	117	1.4%	28.6%
Southeast	24	0.3%	-20.0%	103	1.4%	2.0%

	Foreign		
	Count	% of campus	
		total	change ¹
Bloomington	4,826	11.4%	10.1%
IUPUI	1,363	4.5%	1.2%
East	12	0.4%	140.0%
Fort Wayne*	87	1.1%	19.2%
Kokomo	3	0.1%	-57.1%
Northwest	10	0.2%	-28.6%
South Bend	233	2.7%	-1.7%
Southeast	33	0.5%	-8.3%

	Native Hawaiian/Pacific Islander			Two or More Races		
	Count	% of campus		Count	% of campus	
		total	change ¹		total	change ¹
Bloomington	26	0.1%	-25.7%	604	1.4%	n/a
IUPUI	19	0.1%	35.7%	402	1.3%	n/a
East	6	0.2%	n/a	29	0.9%	n/a
Fort Wayne*	2	0.0%	n/a	142	1.7%	n/a
Kokomo	1	0.0%	-75.0%	20	0.6%	n/a
Northwest	5	0.1%	0.0%	52	0.9%	n/a
South Bend	4	0.0%	0.0%	103	1.2%	n/a
Southeast	8	0.1%	14.3%	105	1.5%	n/a

	Unknown		
	Count	% of campus	
		total	change ¹
Bloomington	555	1.3%	-51.2%
IUPUI	1,187	3.9%	-33.5%
East	89	2.6%	-31.0%
Fort Wayne*	146	1.8%	-44.5%
Kokomo	166	5.3%	7.1%
Northwest	204	3.4%	-35.0%
South Bend	295	3.4%	-33.4%
Southeast	183	2.5%	-39.2%

Residency

	Resident			Non-Resident		
	Count	% of campus		Count	% of campus	
		total	change ¹		total	change ¹
Bloomington	23,432	55.2%	0.5%	19,032	44.8%	0.0%
IUPUI	28,065	91.8%	0.5%	2,501	8.2%	1.6%
East	2,822	83.9%	13.6%	543	16.1%	23.4%
Fort Wayne*	7,905	96.4%	6.2%	299	3.6%	8.7%
Kokomo	3,083	99.2%	3.7%	26	0.8%	30.0%
Northwest	5,892	98.7%	7.3%	77	1.3%	13.2%
South Bend	8,071	94.0%	2.2%	519	6.0%	3.8%
Southeast	4,916	68.5%	4.6%	2,262	31.5%	5.8%

¹ Compared with First Semester, 2009-10

* IU students only