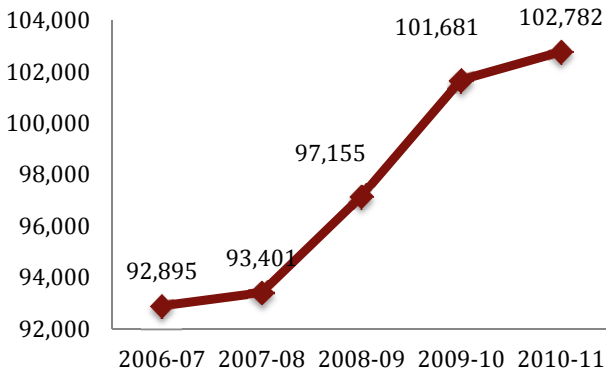
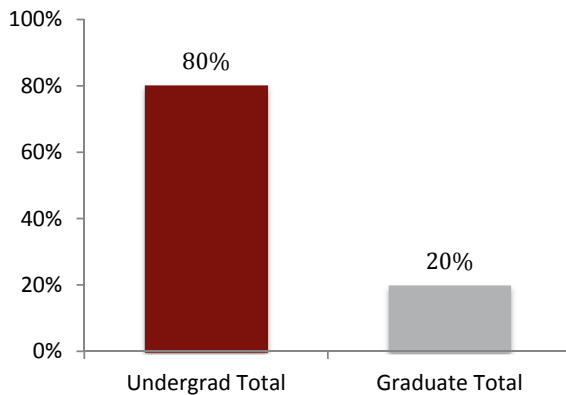
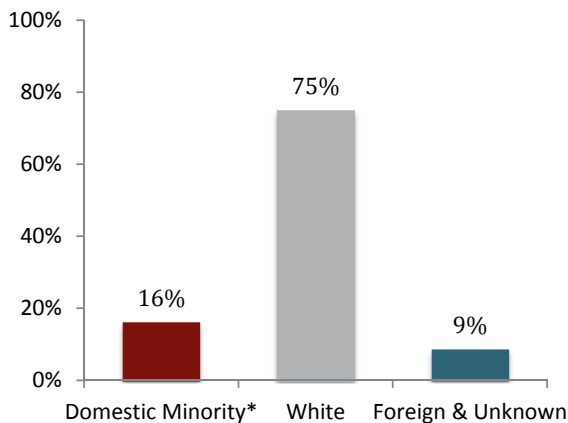


**IU Historical Enrollment
Second Semester**

IU Enrollment By Level

IU Enrollment By Ethnicity & Race


* Includes Hispanic/Latino, African American, American Indian/Alaska Native, Asian American, Native Hawaiian/Pacific Islander and Two or More Races

University Enrollment Summary

	Count	% of total	% change ¹
Headcount	102,782		1.1%
Credit Hours	1,194,971.3		1.3%
FTE	81,733.0		6.5%

Students By Level and Class

Undergrad Total	82,354	80.1%	1.7%
Degree-seeking	78,035	75.9%	1.4%
Non-Degree	4,319	4.2%	8.1%
Grad/Prof Total	20,428	19.9%	-1.5%
Grad Degree-seeking	11,328	11.0%	0.3%
Doctoral-Research	4,078	4.0%	0.6%
Doctoral-Practice	3,624	3.5%	-1.6%
Non-Degree	1,398	1.4%	-18.0%

Freshman	16,799	21.5%	-6.4%
Sophomore	18,411	23.6%	0.0%
Junior	16,942	21.7%	5.4%
Senior	25,883	33.2%	5.6%

Undergraduates By Courseload²

FT-UG	61,605	78.9%	1.3%
PT-UG	16,430	21.1%	1.9%

Sex

Male	45,178	44.0%	1.1%
Female	57,604	56.0%	1.1%

Ethnicity & Race

Hispanic/Latino	4,114	4.0%	21.9%
African American	7,626	7.4%	3.6%
Am. Ind./Alaska Nat.	254	0.2%	-17.5%
Asian American	3,163	3.1%	-2.3%
Nat. Haw./Pac. Islnd	61	0.1%	-4.7%
White	77,198	75.1%	-0.2%
Foreign	6,437	6.3%	8.7%
Unknown	2,433	2.4%	-36.0%
Two or More Races	1,496	1.5%	561.9%

Residency

Resident	78,673	76.5%	1.1%
Non-Resident	24,109	23.5%	1.0%
Reciprocity ³	2,443	10.1%	5.4%

¹ Compared with Second Semester, 2009-10

² Degree-seeking only

³ Portion of non-resident enrollments that are reciprocity

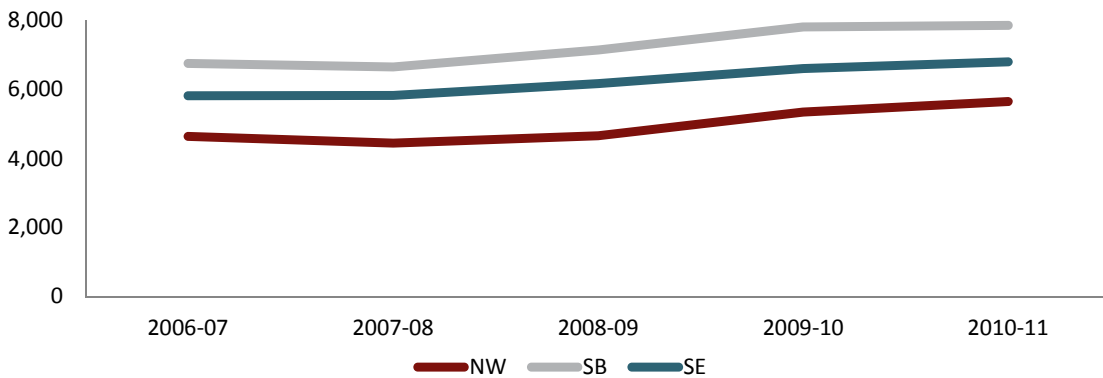
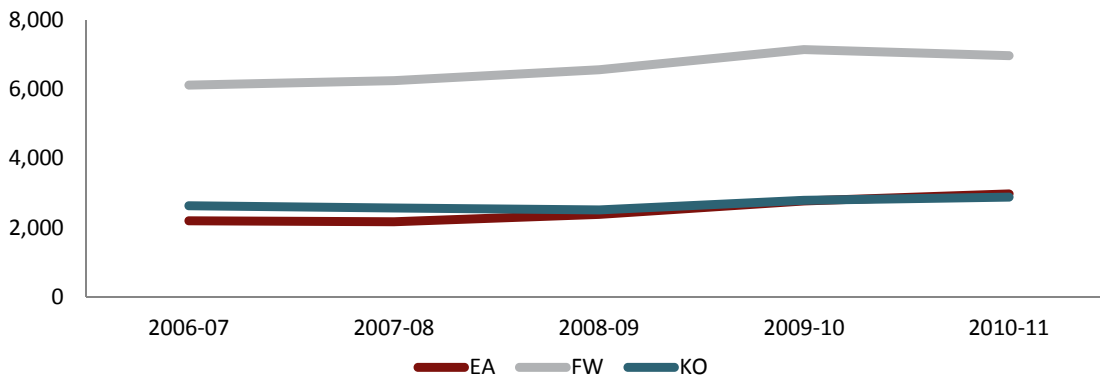
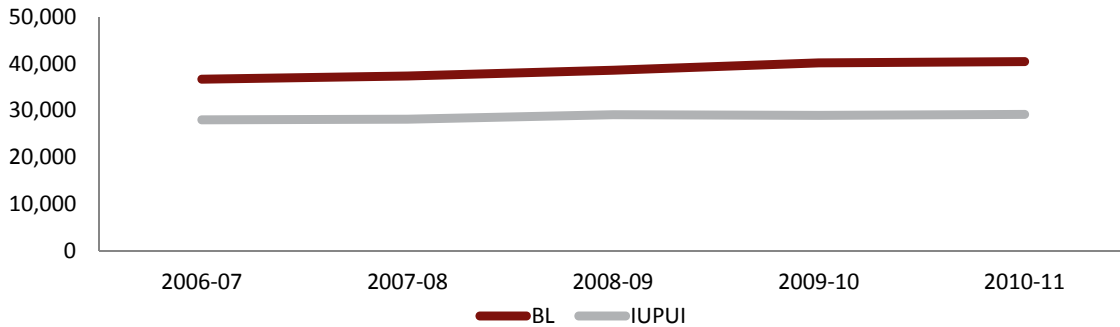
Campus Enrollment Summary

	Headcount			Credit Hours			FTE		
	Count	%	%	Count	%	%	Count	%	%
		of total	change ¹		of total	change ¹		of total	change ¹
Bloomington	40,456	39.4%	0.6%	529,730.0	44.3%	0.3%	36,479.9	44.6%	0.3%
Indianapolis	29,197	28.4%	0.7%	333,872.3	27.9%	1.9%	22,897.5	28.0%	2.3%
East	2,975	2.9%	7.4%	29,614.5	2.5%	5.8%	1,982.5	2.4%	5.6%
Fort Wayne*	6,968	6.8%	-2.5%	72,525.0	6.1%	-1.0%	4,883.0	6.0%	-1.0%
Kokomo	2,876	2.8%	3.2%	28,014.0	2.3%	1.1%	1,880.3	2.3%	0.8%
Northwest	5,652	5.5%	5.7%	57,898.0	4.8%	6.0%	3,924.2	4.8%	5.8%
South Bend	7,858	7.6%	0.6%	75,638.0	6.3%	1.0%	5,114.3	6.3%	0.8%
Southeast	6,800	6.6%	3.0%	67,679.5	5.7%	3.1%	4,571.4	5.6%	2.9%

¹ Compared with Second Semester, 2009-10

* IU students only

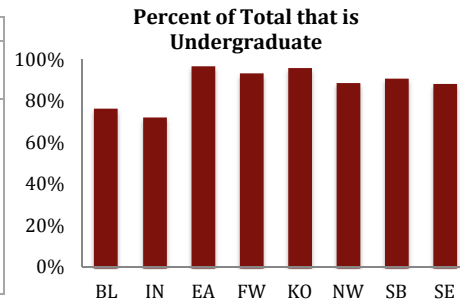
Campus Historical Second Semester Enrollment



Campus Enrollment Summary

Level of Enrollment (including non-degree)

	Undergraduate			Graduate		
	% of campus		% change ¹	% of campus		% change ¹
	Count	total		Count	total	
Bloomington	30,972	76.6%	0.3%	9,484	23.4%	1.8%
Indianapolis	21,081	72.2%	0.9%	8,116	27.8%	0.0%
East	2,882	96.9%	8.2%	93	3.1%	-12.3%
Fort Wayne*	6,492	93.2%	-1.2%	476	6.8%	-17.8%
Kokomo	2,761	96.0%	4.9%	115	4.0%	-26.8%
Northwest	5,009	88.6%	7.1%	643	11.4%	-4.2%
South Bend	7,148	91.0%	3.3%	710	9.0%	-20.4%
Southeast	6,009	88.4%	5.3%	791	11.6%	-11.9%



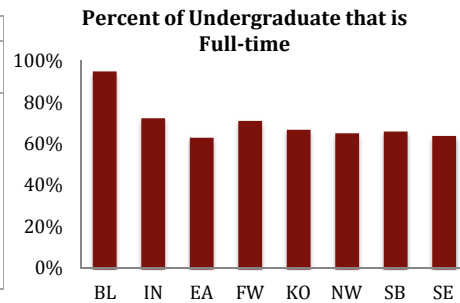
Undergraduates by Class[†]

	Freshman			Sophomore			Junior			Senior		
	% of campus		% change ¹	% of campus		% change ¹	% of campus		% change ¹	% of campus		% change ¹
	Count	total		Count	total		Count	total		Count	total	
Bloomington	5,480	18.0%	-3.1%	7,087	23.3%	-5.6%	7,323	24.0%	3.5%	10,577	34.7%	3.9%
Indianapolis	3,610	17.9%	-6.5%	4,512	22.3%	0.3%	4,442	22.0%	4.7%	7,636	37.8%	6.1%
East	533	21.5%	-13.6%	534	21.5%	-2.4%	581	23.4%	8.6%	833	33.6%	21.3%
Fort Wayne*	1,912	27.4%	-11.6%	1,393	20.0%	2.5%	972	13.9%	9.3%	1,666	23.9%	0.7%
Kokomo	568	19.7%	-12.2%	584	20.3%	8.1%	474	16.5%	16.5%	683	23.7%	1.3%
Northwest	1,635	28.9%	1.9%	1,371	24.3%	17.0%	755	13.4%	13.2%	1,050	18.6%	5.1%
South Bend	1,624	20.7%	-14.1%	1,535	19.5%	4.4%	1,098	14.0%	-2.0%	1,790	22.8%	12.9%
Southeast	1,437	21.1%	-4.4%	1,395	20.5%	5.3%	1,297	19.1%	13.9%	1,648	24.2%	7.4%

[†] Degree-seeking only

Undergraduate Enrollment Status[†]

	Full-time Undergrad			Part-time Undergrad		
	% of campus		% change ¹	% of campus		% change ¹
	Count	total		Count	total	
Bloomington	28,833	94.6%	0.0%	1,634	5.4%	3.0%
Indianapolis	14,633	72.4%	2.7%	5,567	27.6%	0.3%
East	1,565	63.1%	2.7%	916	36.9%	6.3%
Fort Wayne*	4,224	71.1%	-0.2%	1,719	28.9%	-6.3%
Kokomo	1,542	66.8%	3.6%	767	33.2%	-1.5%
Northwest	3,129	65.0%	6.4%	1,682	35.0%	12.1%
South Bend	3,983	65.9%	0.9%	2,064	34.1%	-2.6%
Southeast	3,696	64.0%	2.4%	2,081	36.0%	9.9%



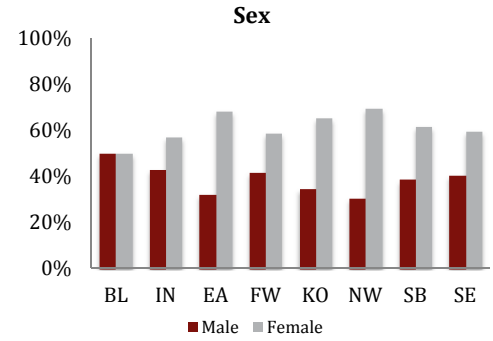
¹ Compared with Second Semester, 2009-10

* IU students only

Campus Enrollment Summary

Sex

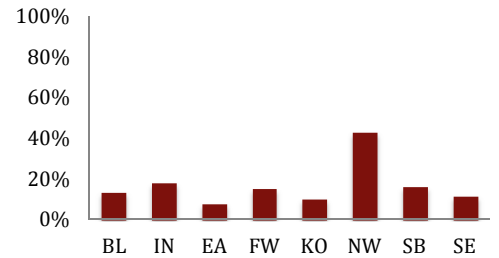
	Male			Female		
	Count	% of campus		Count	% of campus	
		total	change ¹		total	change ¹
Bloomington	20,266	50.1%	-0.1%	20,190	49.9%	1.3%
Indianapolis	12,553	43.0%	1.3%	16,644	57.0%	0.2%
East	951	32.0%	5.2%	2,024	68.0%	8.5%
Fort Wayne*	2,899	41.6%	-0.4%	4,069	58.4%	-4.0%
Kokomo	998	34.7%	4.5%	1,878	65.3%	2.5%
Northwest	1,730	30.6%	3.5%	3,922	69.4%	6.6%
South Bend	3,030	38.6%	1.6%	4,828	61.4%	0.0%
Southeast	2,751	40.5%	6.3%	4,049	59.5%	0.8%



Ethnicity & Race

	Domestic Minority			Other		
	Count	% of campus		Count	% of campus	
		total	change ¹		total	change ¹
Bloomington	5,412	13.4%	15.3%	35,044	86.6%	-1.3%
Indianapolis	5,226	17.9%	13.4%	23,971	82.1%	-1.7%
East	228	7.7%	17.5%	2,747	92.3%	6.7%
Fort Wayne*	1,083	15.5%	12.3%	5,885	84.5%	-4.8%
Kokomo	296	10.3%	12.1%	2,580	89.7%	2.2%
Northwest	2,420	42.8%	17.8%	3,232	57.2%	-1.9%
South Bend	1,261	16.0%	16.0%	6,597	84.0%	-1.9%
Southeast	788	11.6%	12.7%	6,012	88.4%	1.8%

Percent of Total that is Minority



	Hispanic/Latino			African American		
	Count	% of campus		Count	% of campus	
		total	change ¹		total	change ¹
Bloomington	1,348	3.3%	27.3%	1,730	4.3%	-1.6%
Indianapolis	955	3.3%	20.7%	2,672	9.2%	3.8%
East	51	1.7%	37.8%	116	3.9%	-3.3%
Fort Wayne*	292	4.2%	13.2%	523	7.5%	-2.4%
Kokomo	74	2.6%	27.6%	149	5.2%	2.1%
Northwest	796	14.1%	17.1%	1,444	25.5%	16.5%
South Bend	451	5.7%	22.2%	571	7.3%	-0.3%
Southeast	147	2.2%	20.5%	421	6.2%	2.2%

Residency

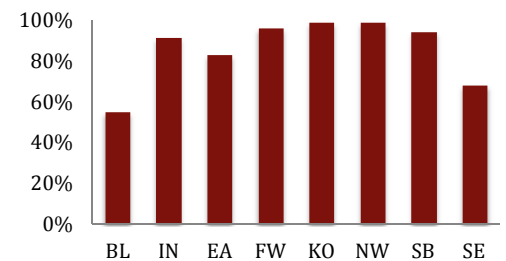
	Resident		
	Count	% of campus	
		total	change ¹
Bloomington	22,352	55.3%	1.0%
Indianapolis	26,718	91.5%	0.5%
East	2,471	83.1%	4.7%
Fort Wayne*	6,683	95.9%	-2.9%
Kokomo	2,849	99.1%	3.0%
Northwest	5,586	98.8%	5.7%
South Bend	7,390	94.0%	0.9%
Southeast	4,624	68.0%	2.8%

	American Indian/Alaska Native			Asian American		
	Count	% of campus		Count	% of campus	
		total	change ¹		total	change ¹
Bloomington	91	0.2%	-18.8%	1,627	4.0%	-3.6%
Indianapolis	64	0.2%	-9.9%	1,082	3.7%	-0.7%
East	4	0.1%	-42.9%	18	0.6%	-14.3%
Fort Wayne*	28	0.4%	3.7%	114	1.6%	-8.8%
Kokomo	5	0.2%	-44.4%	36	1.3%	2.9%
Northwest	18	0.3%	-5.3%	94	1.7%	-6.0%
South Bend	22	0.3%	-29.0%	102	1.3%	24.4%
Southeast	22	0.3%	-31.3%	90	1.3%	-5.3%

	Non-resident		
	Count	% of campus	
		total	change ¹
Bloomington	18,104	44.7%	0.1%
Indianapolis	2,479	8.5%	2.1%
East	504	16.9%	23.2%
Fort Wayne*	285	4.1%	8.8%
Kokomo	27	0.9%	17.4%
Northwest	66	1.2%	0.0%
South Bend	468	6.0%	-4.1%
Southeast	2,176	32.0%	3.2%

	Native Hawaiian/Pacific Islander			Two or More Races		
	Count	% of campus		Count	% of campus	
		total	change ¹		total	change ¹
Bloomington	24	0.1%	-22.6%	592	1.5%	n/a
Indianapolis	18	0.1%	38.5%	435	1.5%	n/a
East	3	0.1%	200.0%	36	1.2%	n/a
Fort Wayne*	3	0.0%	n/a	123	1.8%	n/a
Kokomo	2	0.1%	-50.0%	30	1.0%	n/a
Northwest	5	0.1%	25.0%	63	1.1%	n/a
South Bend	1	0.0%	-80.0%	114	1.5%	n/a
Southeast	5	0.1%	-16.7%	103	1.5%	n/a

Percent of Total that is Resident



¹ Compared with Second Semester, 2009-10

* IU students only