

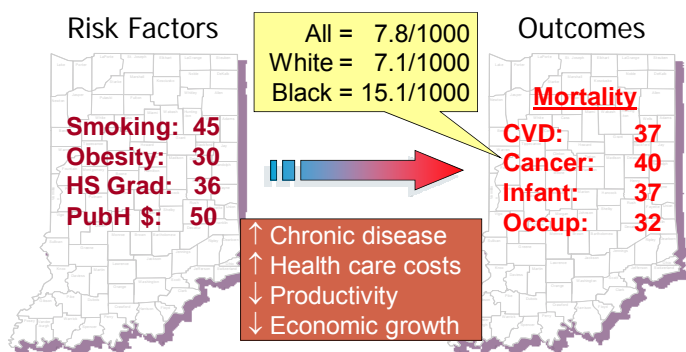
**Presentation to BFC: IUB School of Public Health
Dean Robert M. Goodman, Ph.D., MPH, MA
October 20, 2009**

Background - Demographic

- 6th worst state in overall well-being (Gallup Wellness Survey, 2009)
- 49th in public health funding (Trust for America's Health, 2009)
- Public health personnel/100,000 population:
 - national average=138;
 - DHHS Region V (Midwest)=76;
 - Indiana=46
- \$26.8 Billion: Indiana avoidable treatment and lost productivity costs, 2003-2023 (Milken Institute, 2007)



Why Schools of Public Health?

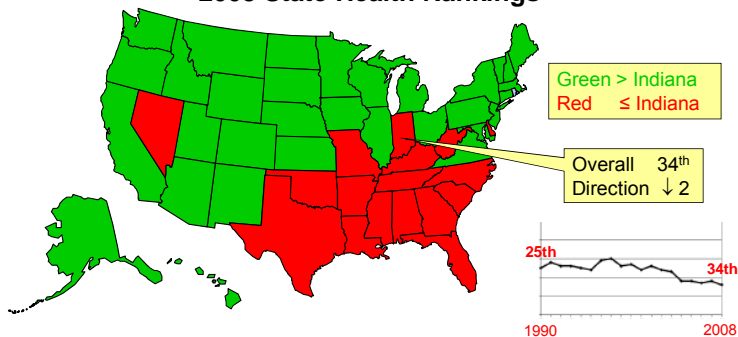


United Health Foundation. *America's Health Rankings*, 2008
The Henry J. Kaiser Family Foundation, 2009



Why Schools of Public Health?

2008 State Health Rankings



United Health Foundation. *America's Health Rankings*, 2008

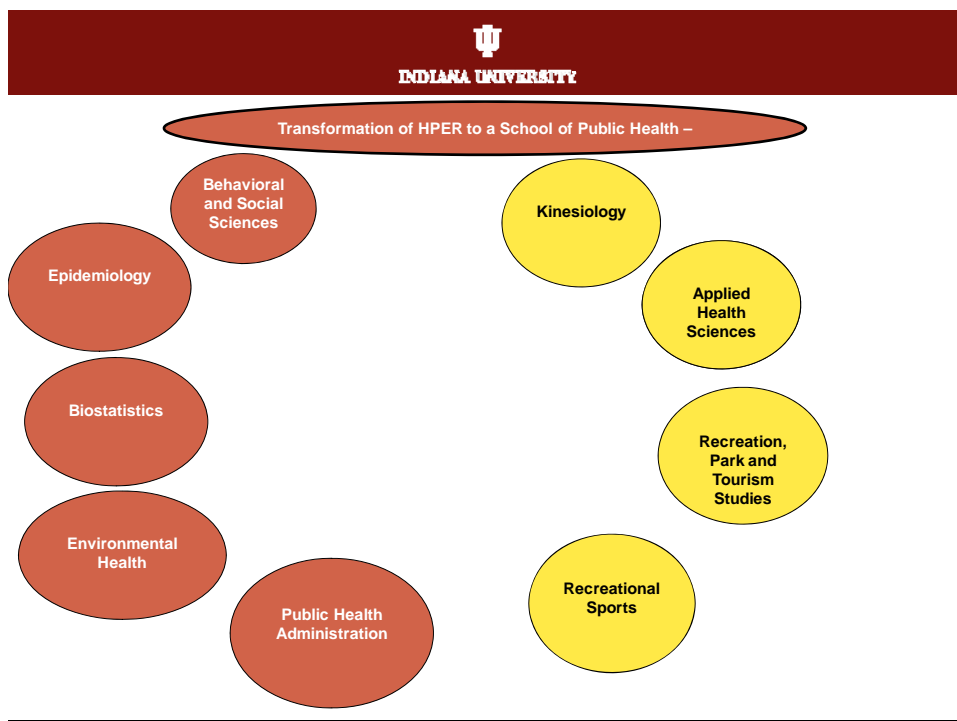
Accreditation Standards

HPER proposal to Provost, President and Board of Trustees for name change ~winter, 2010

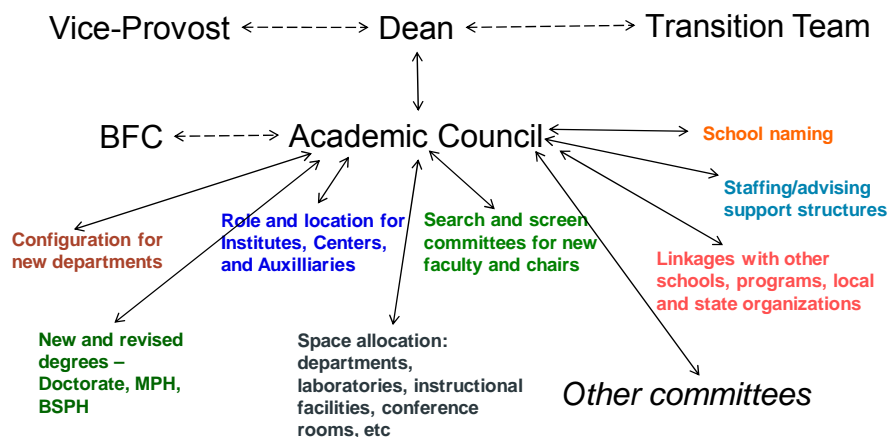
- At minimum, the SPH shall offer the **Master of Public Health (MPH) degree** in **each of the 5 areas** and a **doctoral degree** in **at least 3 of the 5 specified areas** of public health knowledge
 - Biostatistics
 - Epidemiology
 - Environmental health sciences
 - Health services administration
 - Social and behavioral sciences
- At least 5 faculty for each core MPH concentration area
- For core areas offering a doctoral degree, the 5 faculty must be all full time in the SPH
- For core areas not offering a doctoral degree, the school should have a minimum of 3 full-time faculty plus two full-time equivalent (FTE) faculty

HPER's Approach to Transformation

- Current Capacity in HPER to meet the CEPH core area requirements
 - Behavioral and Social Sciences **39**
 - Biostatistics **3**
 - Environmental Health Sciences **6**
 - Epidemiology **5**
 - Health Administration **4**
 - **TOTAL 57**
 -
- **Active Public Health Faculty Searches – Tenure Track**




 INDIANA UNIVERSITY
APPROACH FOR DEVELOPING OUR VISION



- Committees' structures
- Committees' processes
 - Dean's Associates
 - Consultants

Comments Questions