

NATIONAL SURVEY OF STUDENT ENGAGEMENT AT IU KOKOMO

Administrative Council 26 September 2007

What is NSSE?



- Administered by IU Center for Postsecondary Research
- More than 500 institutions nationwide participate each year
- Designed to measure “Student Engagement”

What is NSSE?



Two Components of Student Engagement

- What **students** do—time and energy spent devoted to educationally purposeful activities
- What **institutions** do—using effective educational practices to induce students to do the right things

Why Engagement?



- Student engagement is one measure of the quality of the institution
- Research shows that students who are engaged
 - ▣ Learn more
 - ▣ Move further along in their development
 - ▣ Are more likely to persist to complete their degree



NSSE At IU Kokomo

- Administered to First Year and Senior students in Spring of 2000, 2001, 2004, 2005, and 2006
- Plan to participate again in Spring 2009
- Have not routinely released our results to any outside group
- Campus leadership and some campus groups have discussed some of the results

New NSSE/*USA Today* Joint Venture

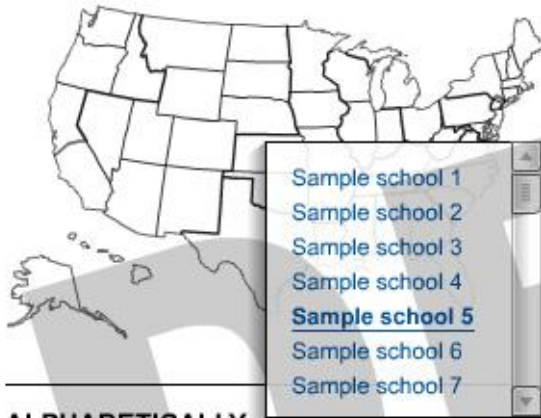
- Goal is “to further educate the public about the link between student engagement and a high quality undergraduate experience.”
- NSSE Benchmarks (composite scores) will be published on a new *USA Today* website

Headline here

Since 2000, the National Survey of Student Engagement has measured student involvement in key practices associated with learning, persistence and graduation. Each participating school receives scores for first-year students and seniors in five benchmark categories. The map below lets you view the scores for more than xxx schools that have chosen to share their NSSE data with USA TODAY.

Search

BY REGION



ALPHABETICALLY

A | B | C | D | E | F | G | H | I | J | K | L | M | N |
O | P | Q | R | S | T | U | V | W | X | Y | Z

BY INSTITUTIONAL TYPE

Doctorate-Granting Universities

- [Research Universities](#) (very high research activity)
- [Research Universities](#) (high research activity)
- [Doctoral/Research Universities](#)

Master's Colleges and Universities

- [Master's Colleges and Universities](#) (larger programs)
- [Master's Colleges and Universities](#) (medium programs)
- [Master's Colleges and Universities](#) (smaller programs)

Baccalaureate Colleges

- [Baccalaureate Colleges](#) (Arts & Sciences)
- [Baccalaureate Colleges](#) (Diverse Fields)

Results

Sample school 5

City, State
Year surveyed: XXXX
Institutional type | Public or private | [Comments from this school](#)

NSSE BENCHMARKS	Freshmen		Seniors	
	This school	Institutional type avg.	This school	Institutional type avg.
Level of academic challenge (Definition)	XX.X	XX.X	XX.X	XX.X
Active and collaborative learning (Definition)	XX.X	XX.X	XX.X	XX.X
Student-faculty interaction (Definition)	XX.X	XX.X	XX.X	XX.X
Enriching educational experiences (Definition)	XX.X	XX.X	XX.X	XX.X
Supportive campus environment (Definition)	XX.X	XX.X	XX.X	XX.X

[More about the NSSE survey](#)

NSSE at IU Kokomo

Respondents

Benchmarks

Difference
Scores

Supportive
Campus
Environment

Overall
Satisfaction

Respondent Characteristics



- How they spend their time compared to peers:
 - ▣ **Less** time working for pay **on campus**
 - ▣ **More** time working for pay **off campus**
 - ▣ **Less** time in co-curricular activities (except 2006)
 - ▣ About the **same** amount of time preparing for class
 - ▣ About the **same** amount of time relaxing & socializing
 - ▣ **More** time caring for dependents living with them (except 2006 FY)
 - ▣ About the **same** amount of time commuting to class

Parents' Educational Attainment



- ~10 – 20% of respondents' **fathers** did not finish high school
- ~5 – 10% of respondents' **mothers** did not finish high school
- ~55 – 60% of **fathers** have not attended college
- ~45 – 60% of **mothers** have not attended college

Benchmark Scores



Level of
Academic
Challenge

Active and
Collaborative
Learning

Student-
Faculty
Interaction

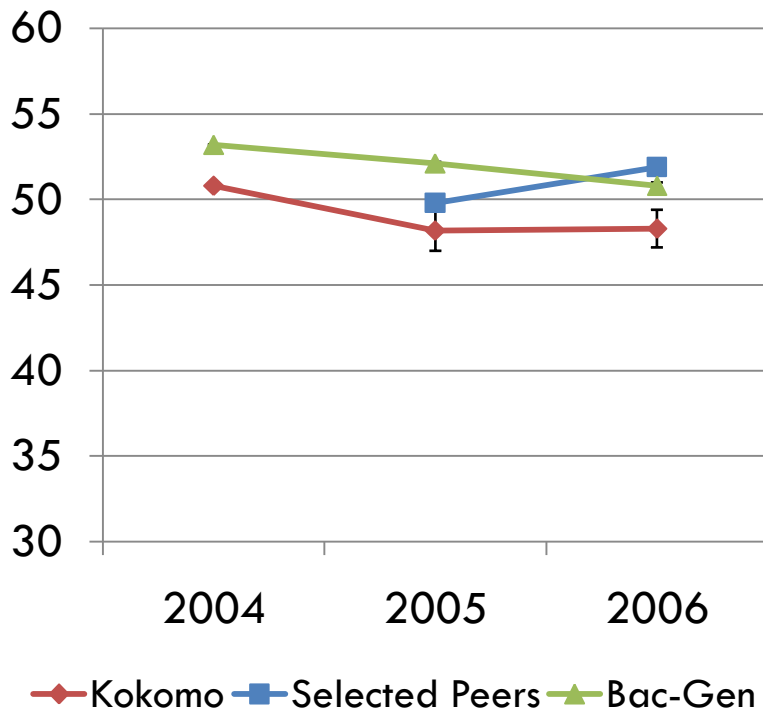
Enriching
Educational
Experiences

Supportive
Campus
Environment

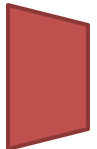
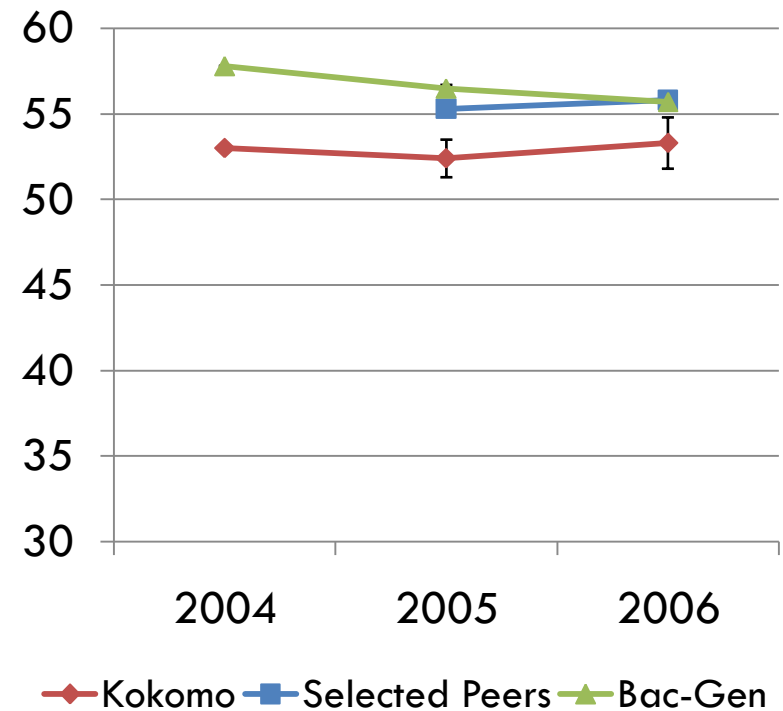
Level of Academic Challenge



First Year Students



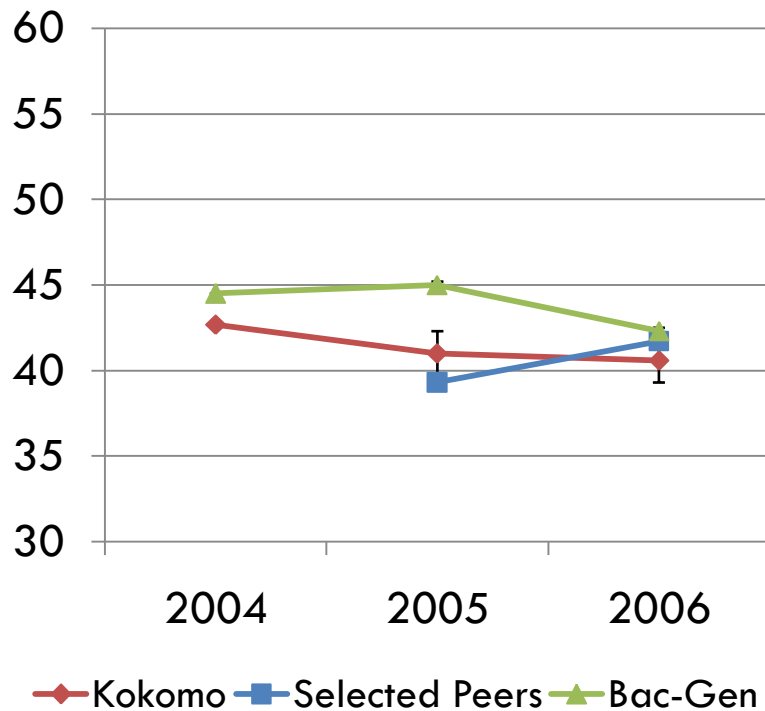
Senior Students



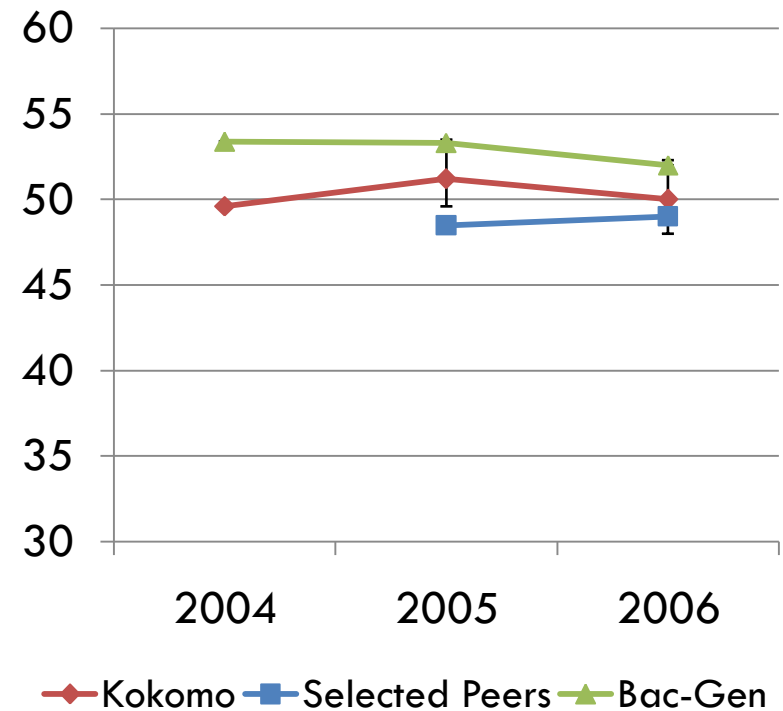
Active & Collaborative Learning



First Year Students



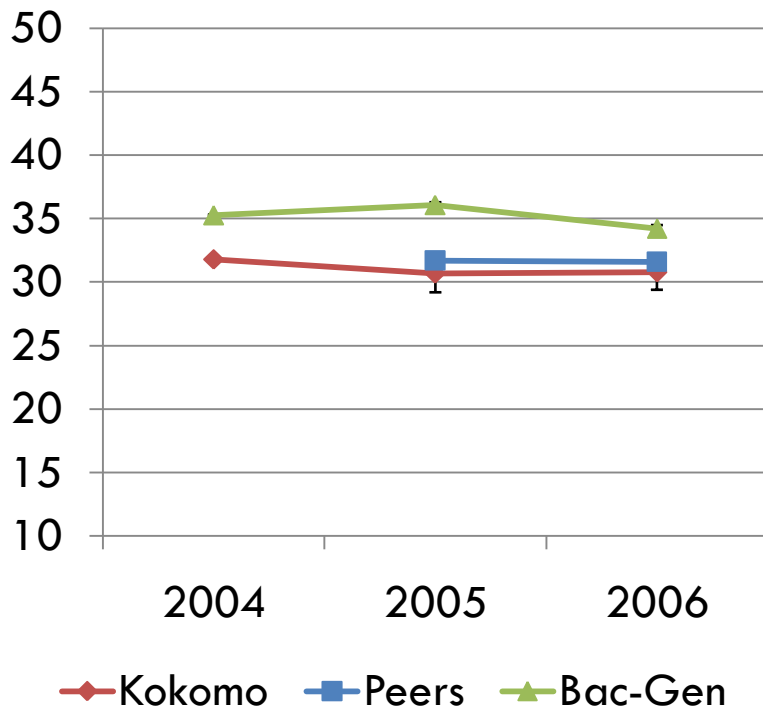
Senior Students



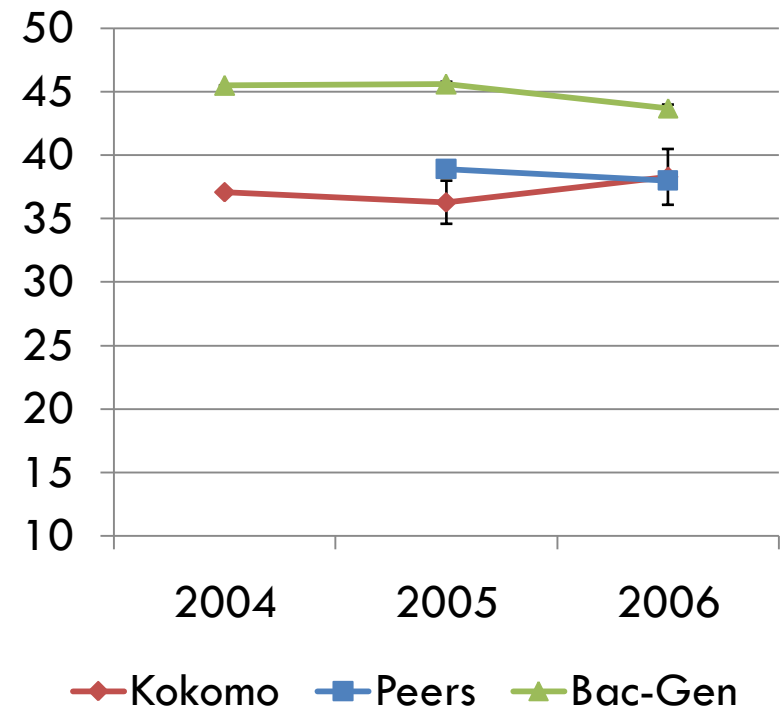
Student-Faculty Interaction



First Year Students



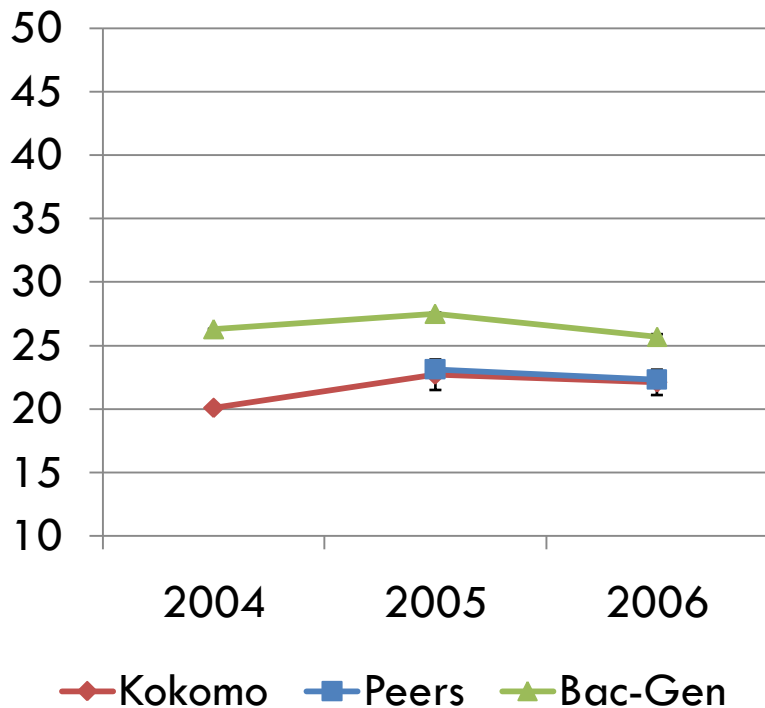
Senior Students



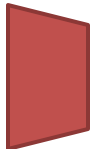
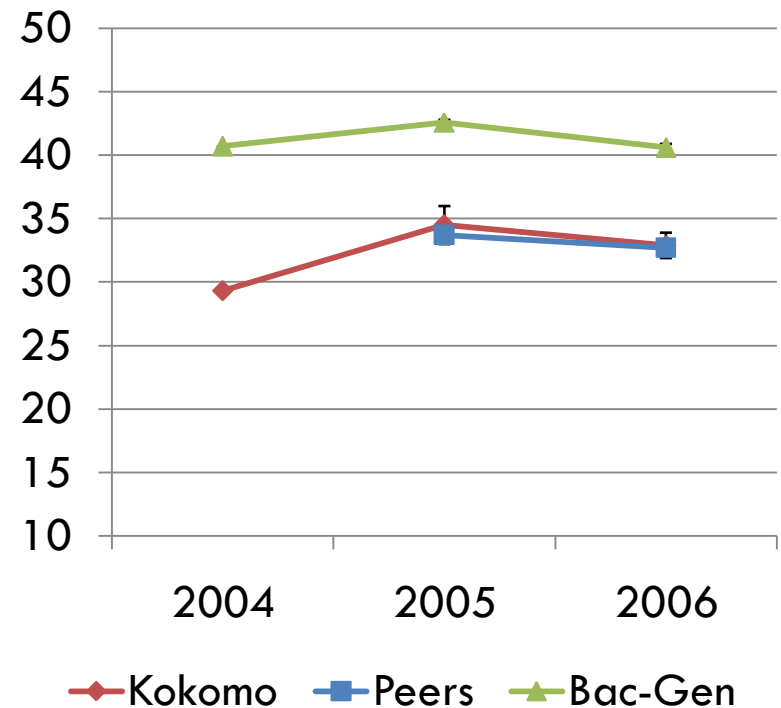
Enriching Educational Experiences



First Year Students



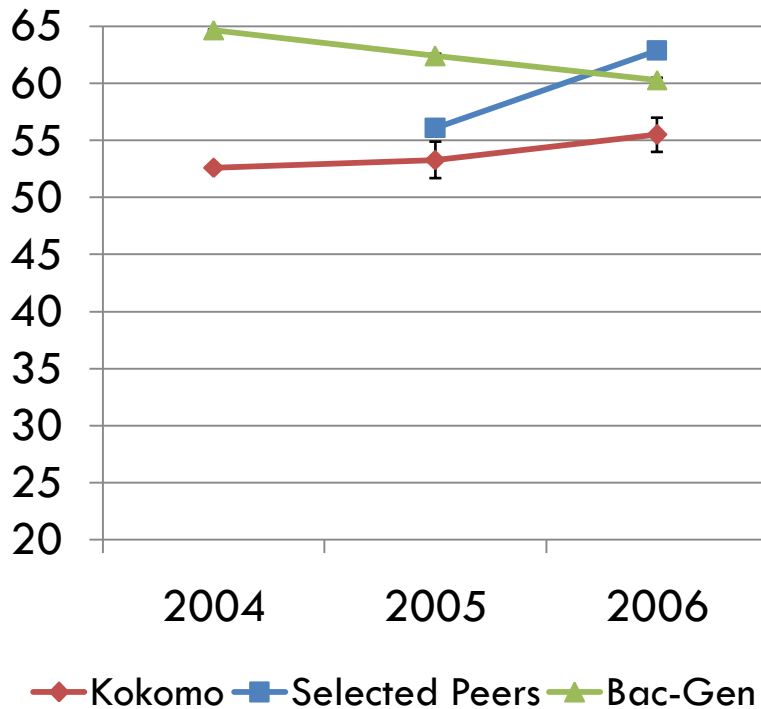
Senior Students



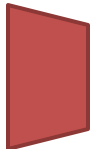
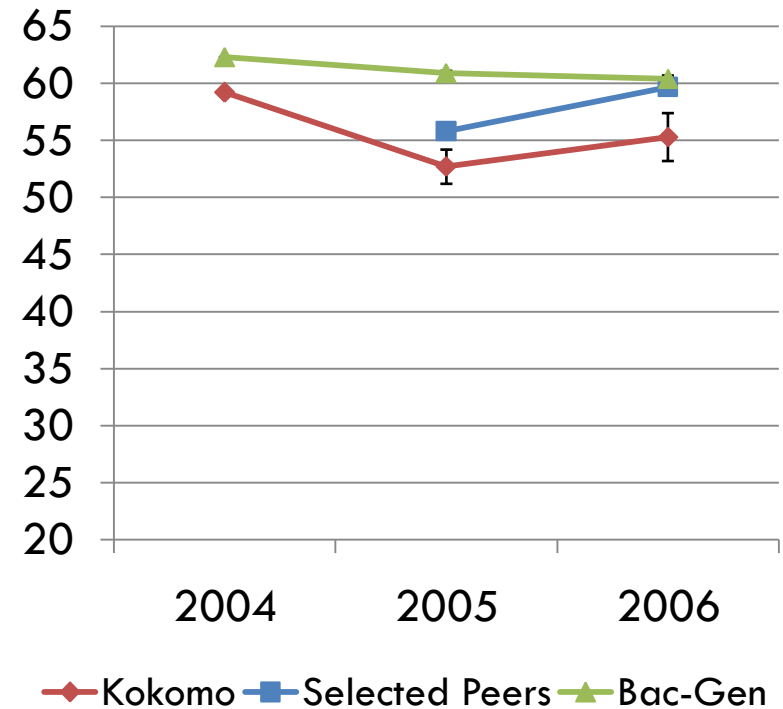
Supportive Campus Environment



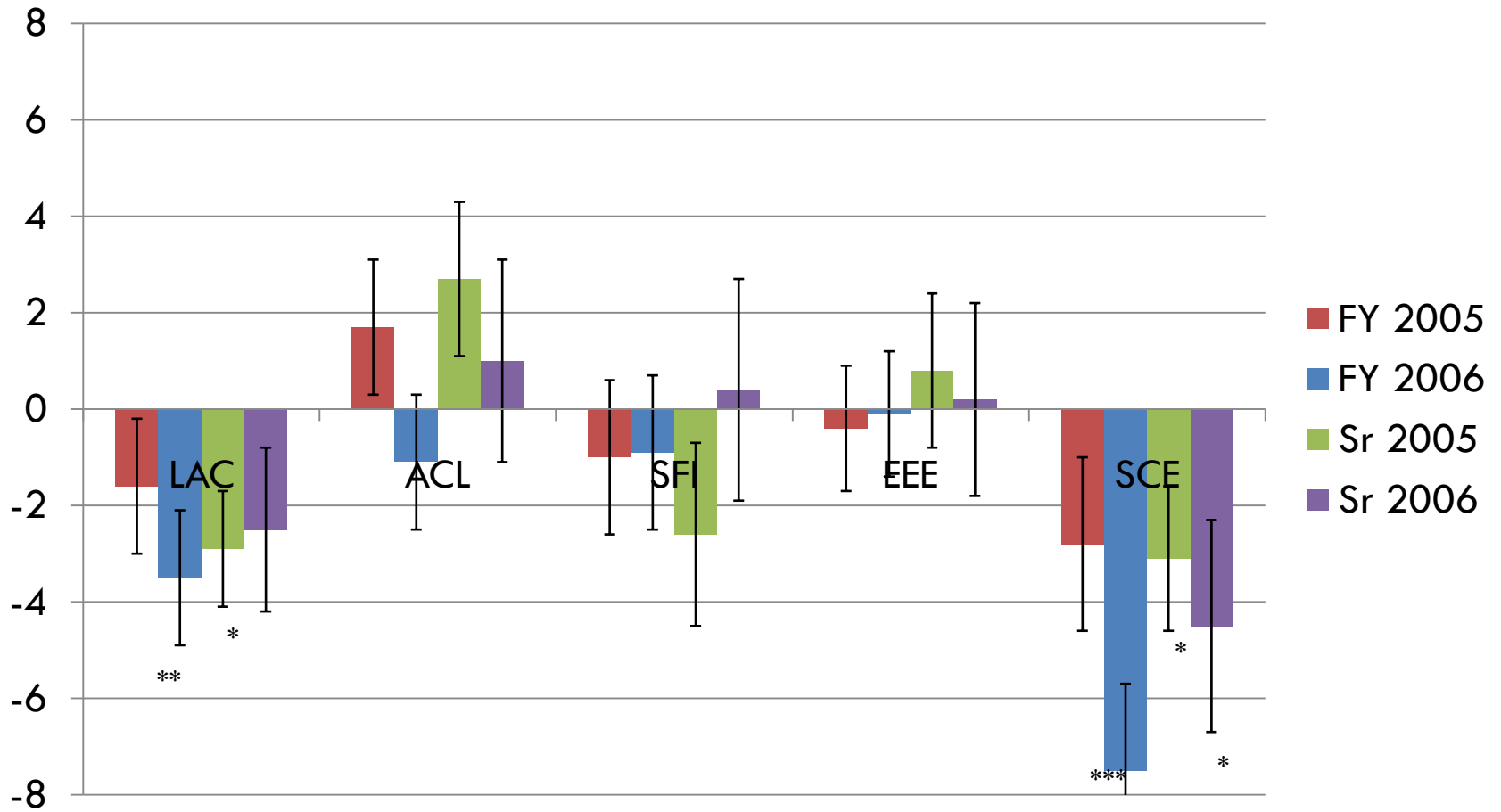
First Year Students



Senior Students



Mean Differences from Selected Peers 2005 - 06

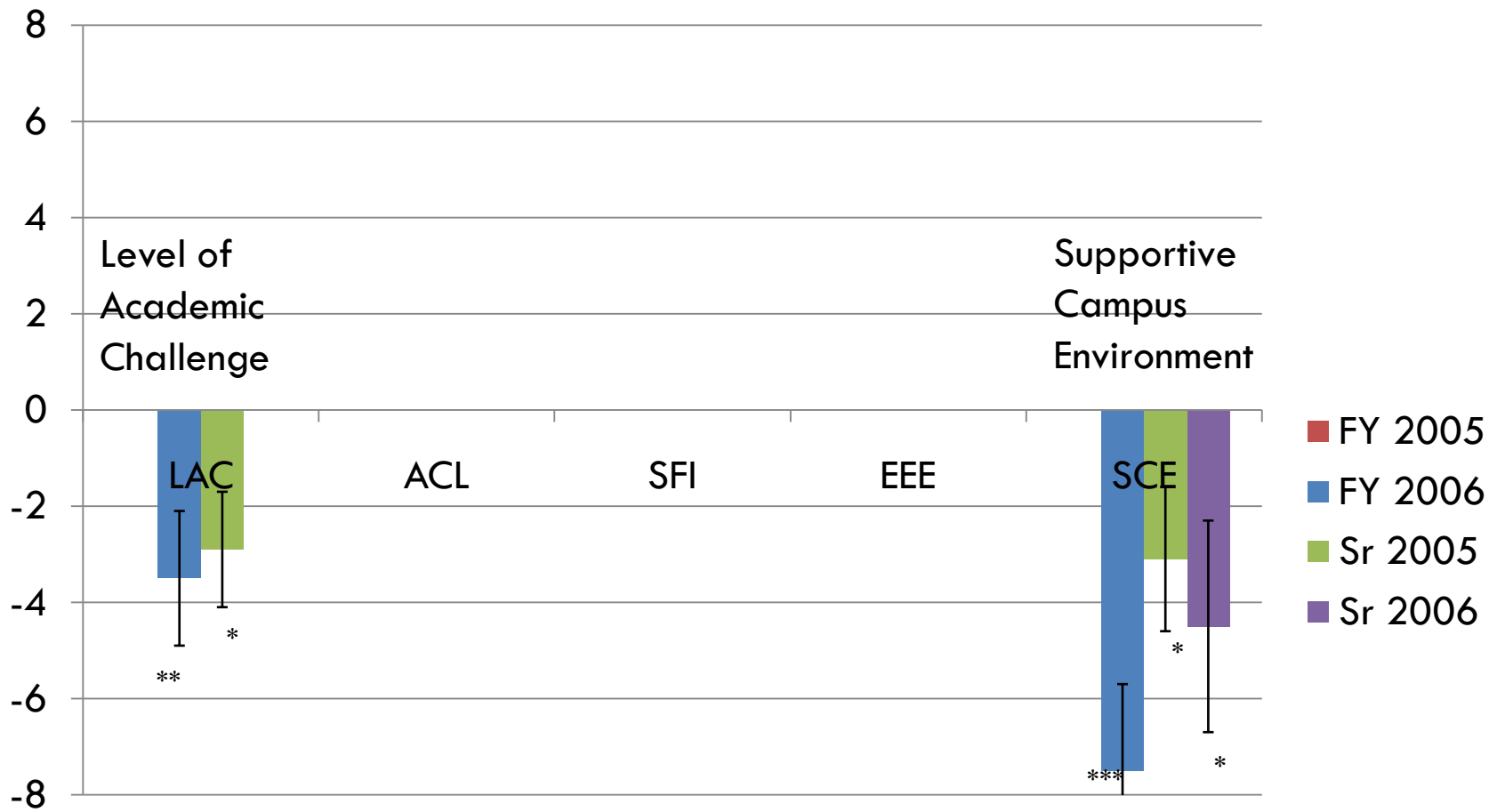


* $p < .05$

** $p < .01$

*** $p < .001$

Significant Mean Differences from Selected Peers 2005 - 06



* $p < .05$

** $p < .01$

*** $p < .001$

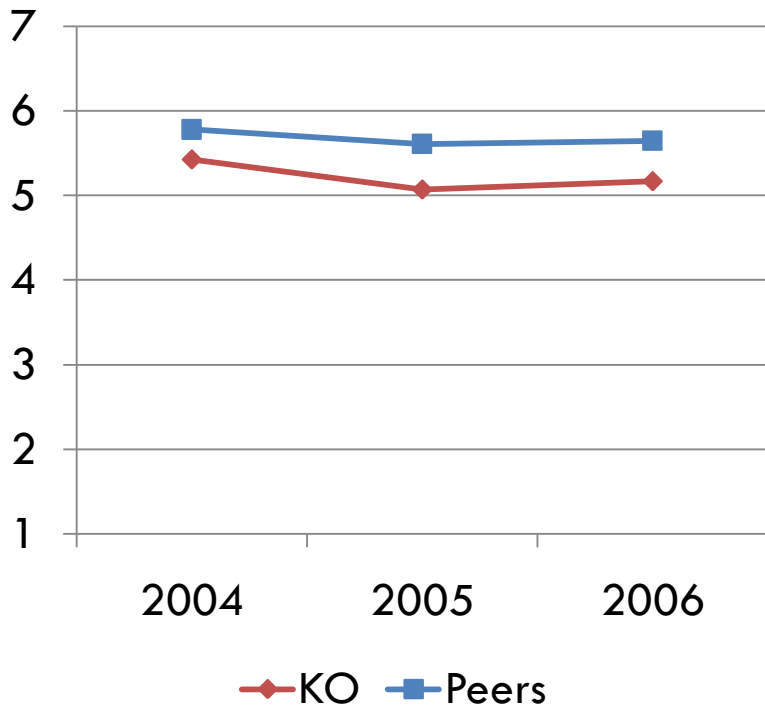
Supportive Campus Environment



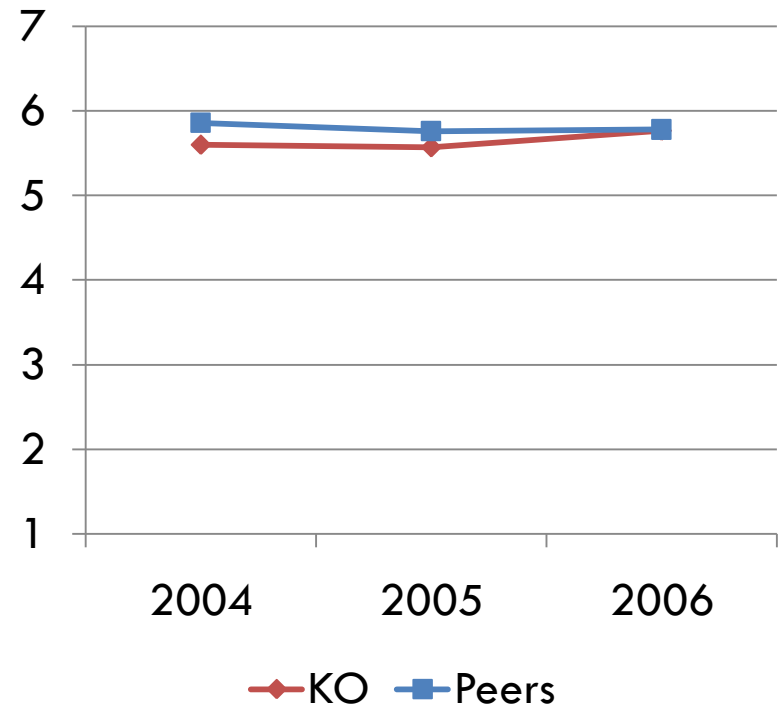
- Two types of items:
 - Quality of relationships with other students, faculty, and administrative offices & staff
 - Extent of campus support in academic, non-academic (work, family), and social arenas

SCE: Quality of Relationships with Other Students

Mean for First Year Students



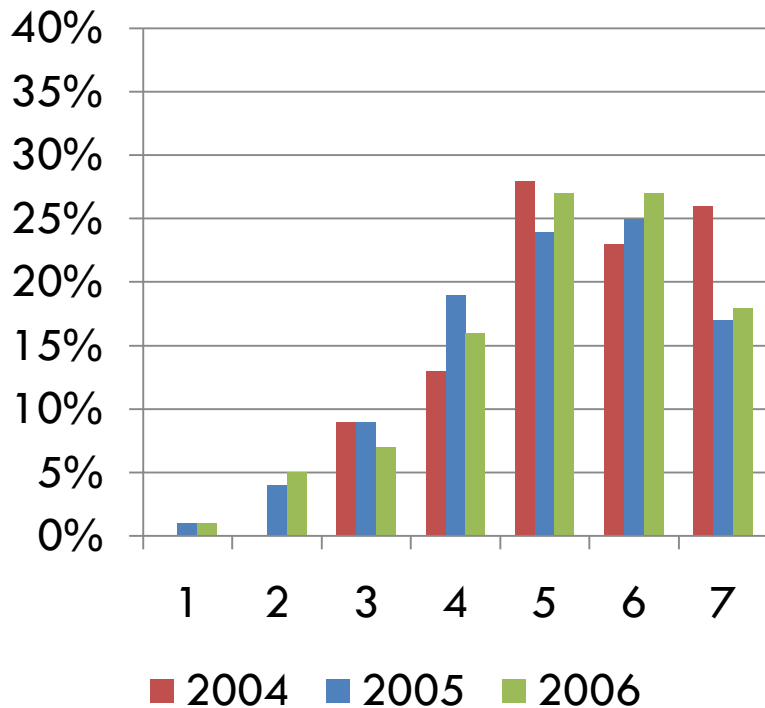
Mean for Senior Students



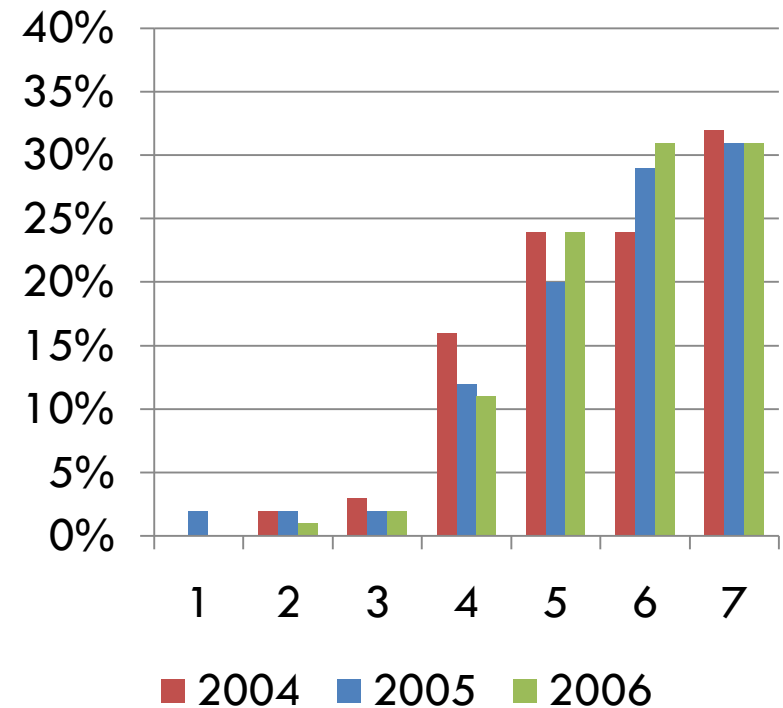
1 = Unfriendly, unsupportive, sense of alienation; 7 = Friendly, supportive, sense of belonging

SCE: Quality of Relationships with Other Students

First Year Students



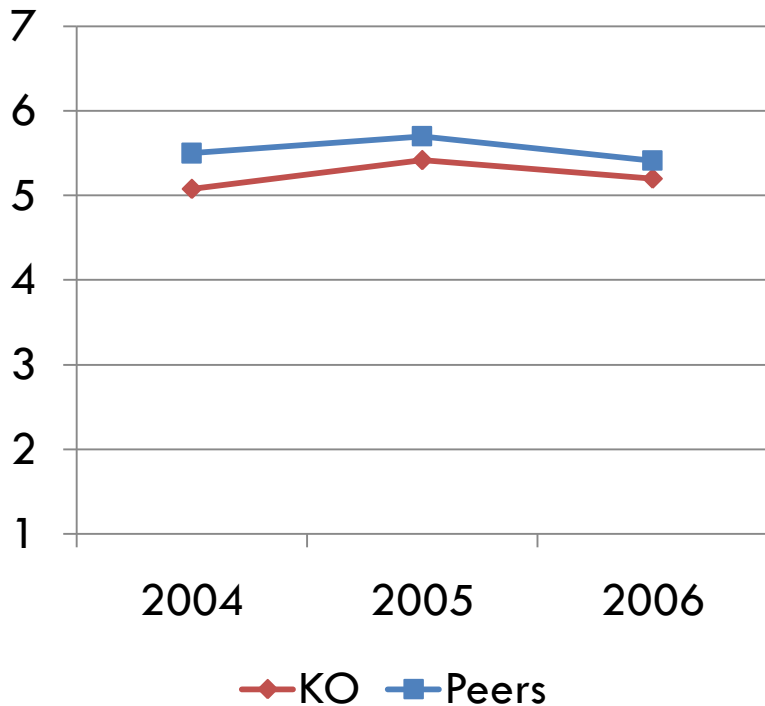
Senior Students



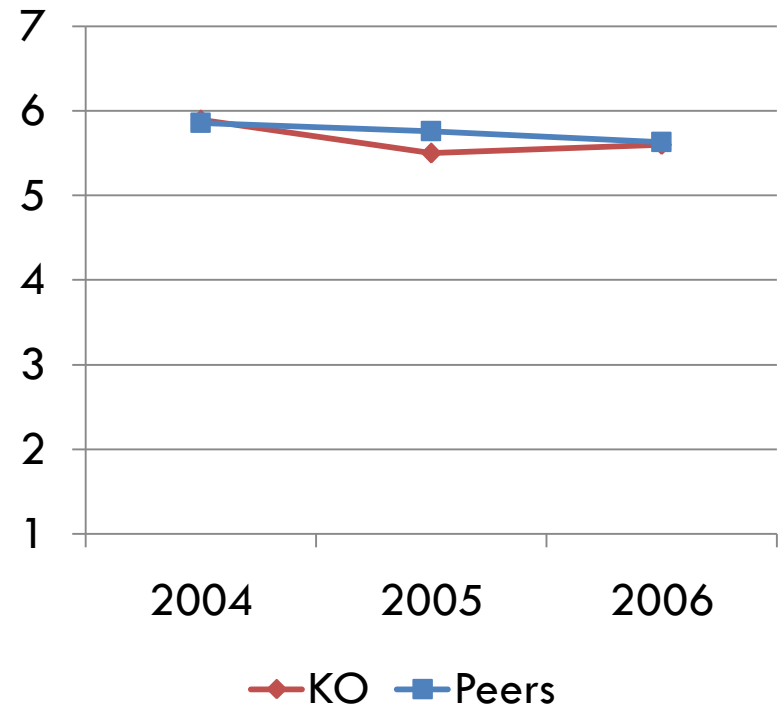
1 = Unfriendly, unsupportive, sense of alienation; 7 = Friendly, supportive, sense of belonging

SCE: Quality of Relationships with Faculty

Mean for First Year Students



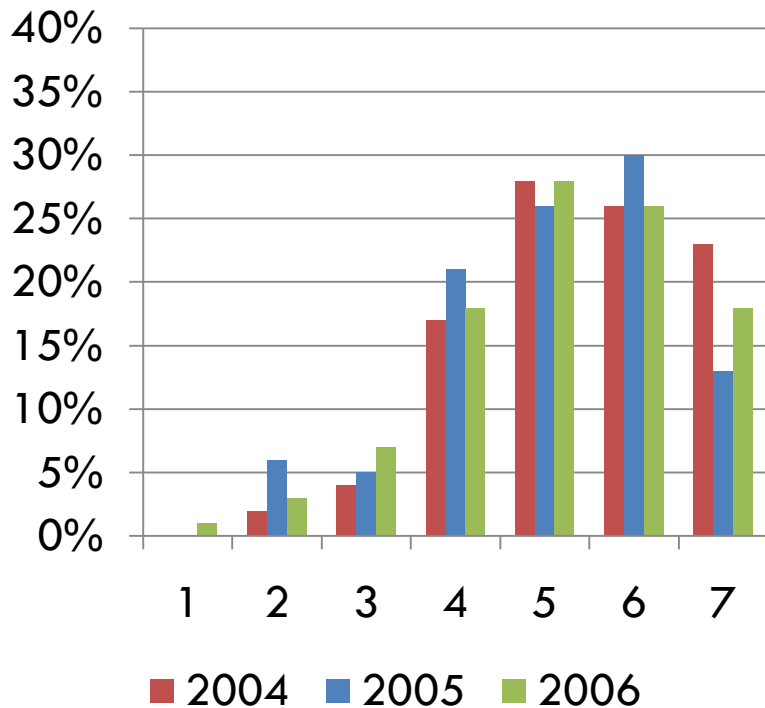
Mean for Senior Students



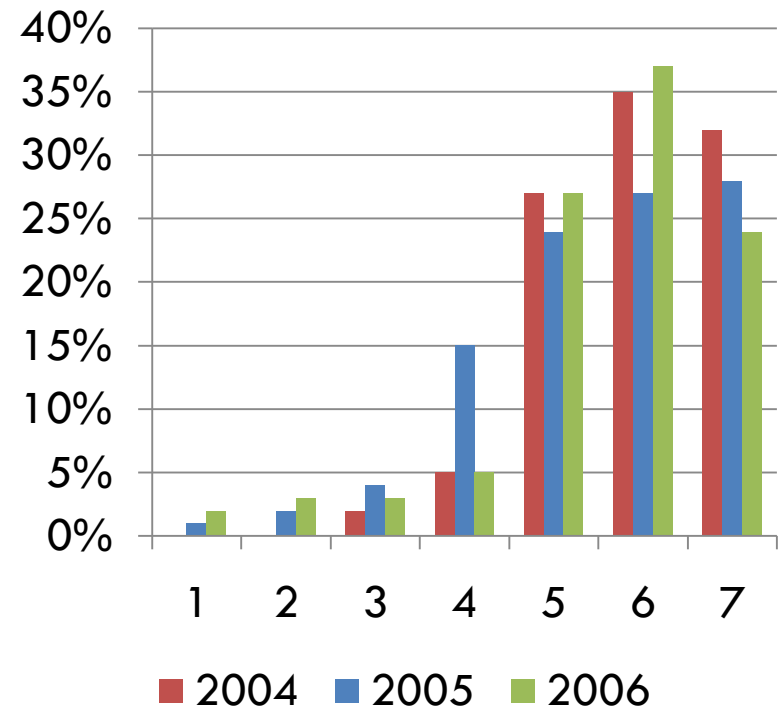
1 = Unavailable, unhelpful, unsympathetic; 7 = Available, helpful, sympathetic

SCE: Quality of Relationships with Faculty

First Year Students



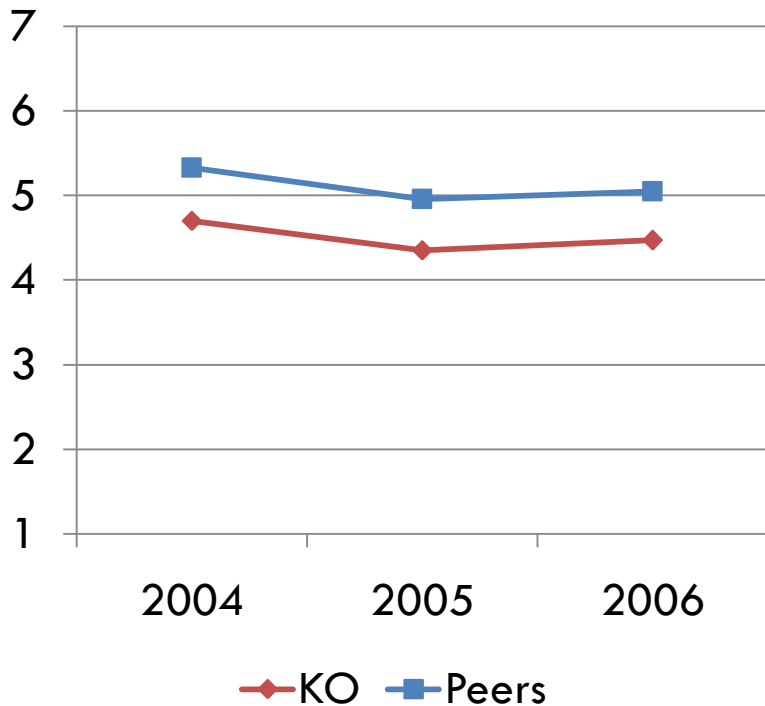
Senior Students



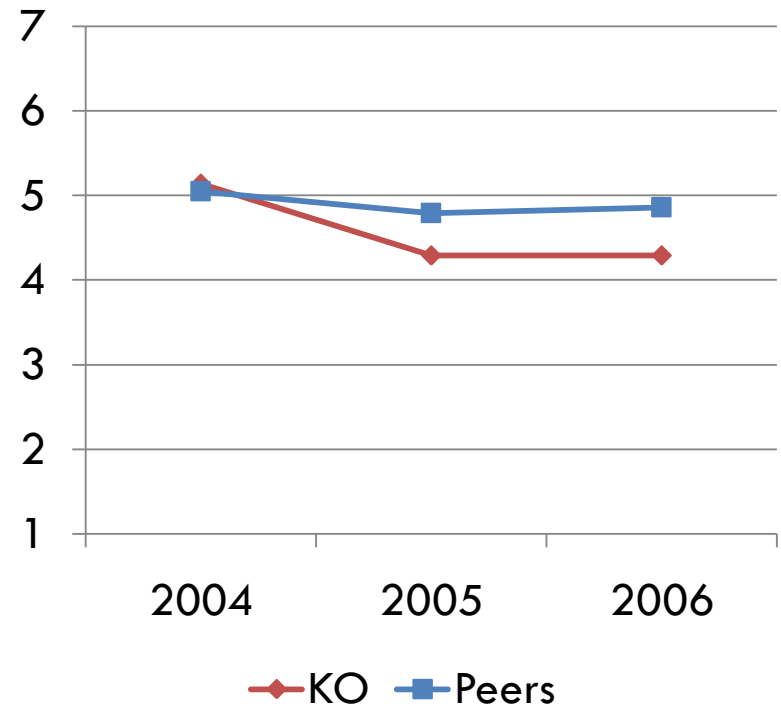
1 = Unavailable, unhelpful, unsympathetic; 7 = Available, helpful, sympathetic

SCE: Quality of Relationships with Administrative Personnel and Offices

Mean for First Year Students



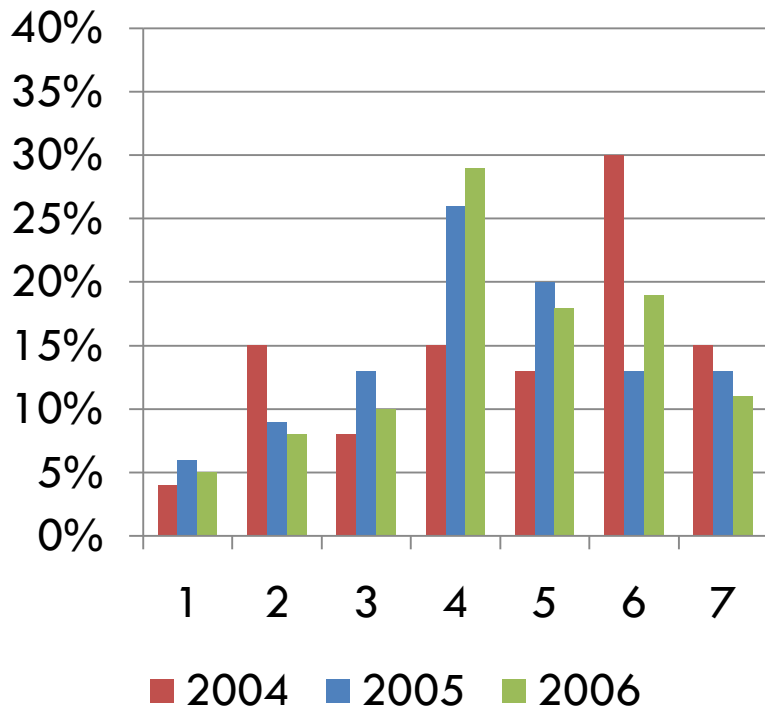
Mean for Senior Students



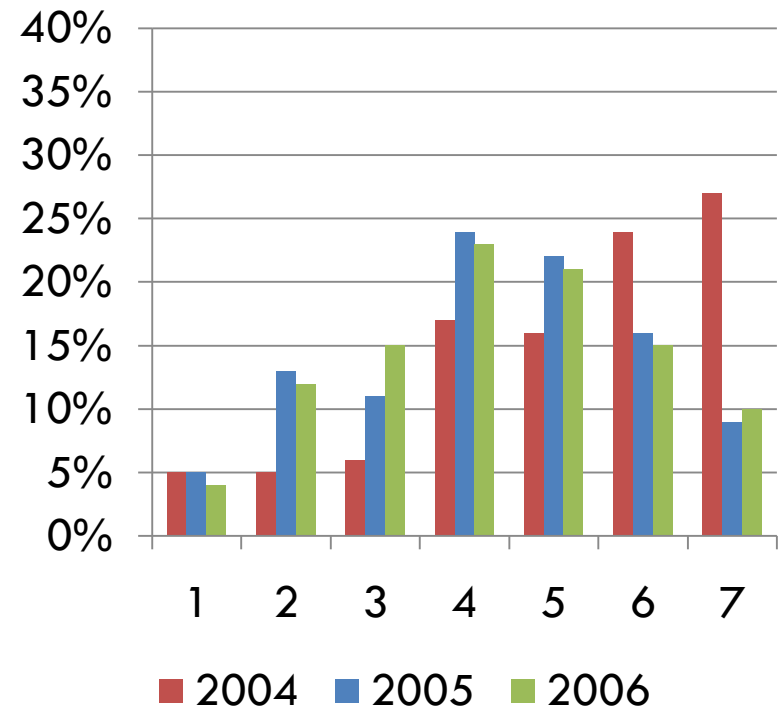
1 = Unhelpful, inconsiderate, rigid; 7 = Helpful, considerate, flexible

SCE: Quality of Relationships with Administrative Personnel and Offices

First Year Students



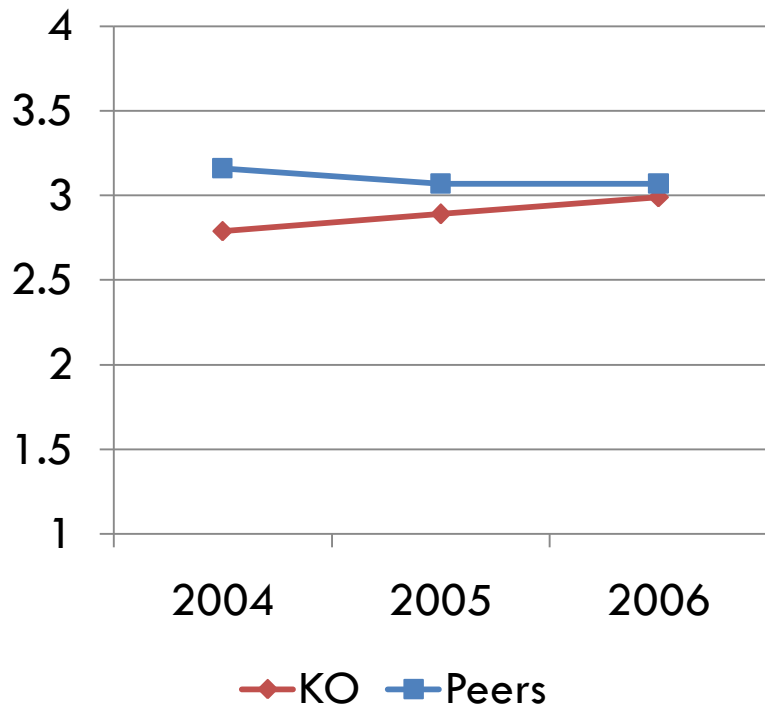
Senior Students



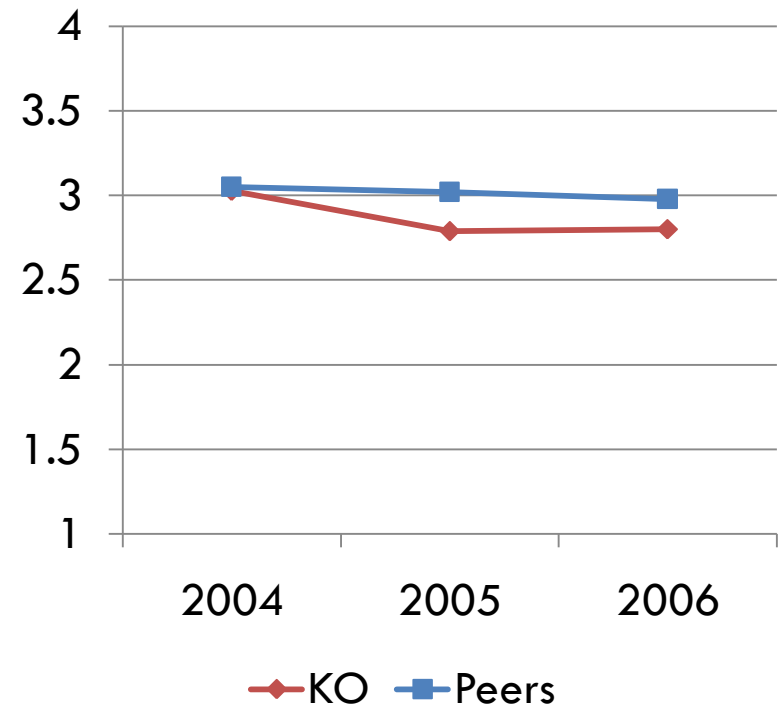
1 = Unhelpful, inconsiderate, rigid; 7 = Helpful, considerate, flexible

SCE: Extent to Which Institution Provides Support to Help you Succeed **Academically**

Mean for First Year Students



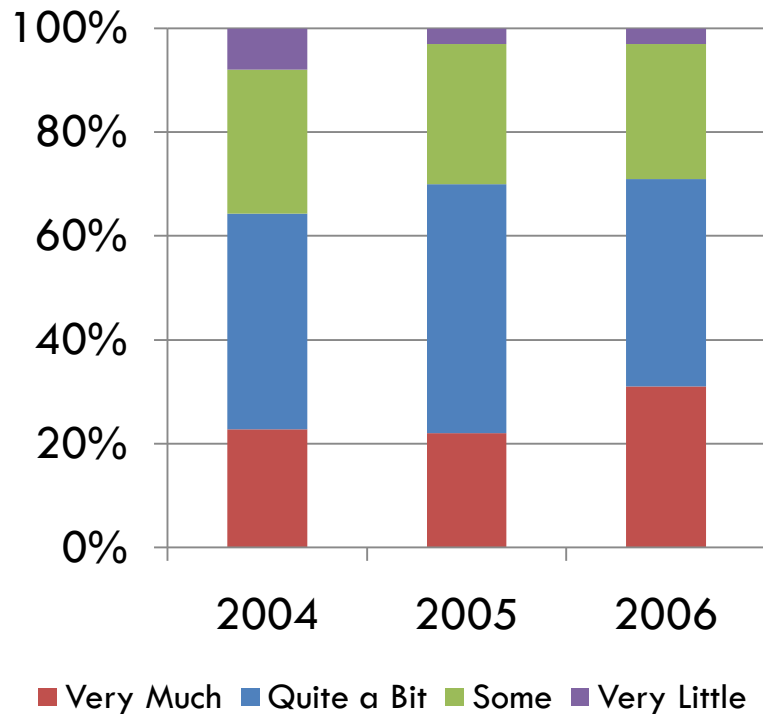
Mean for Senior Students



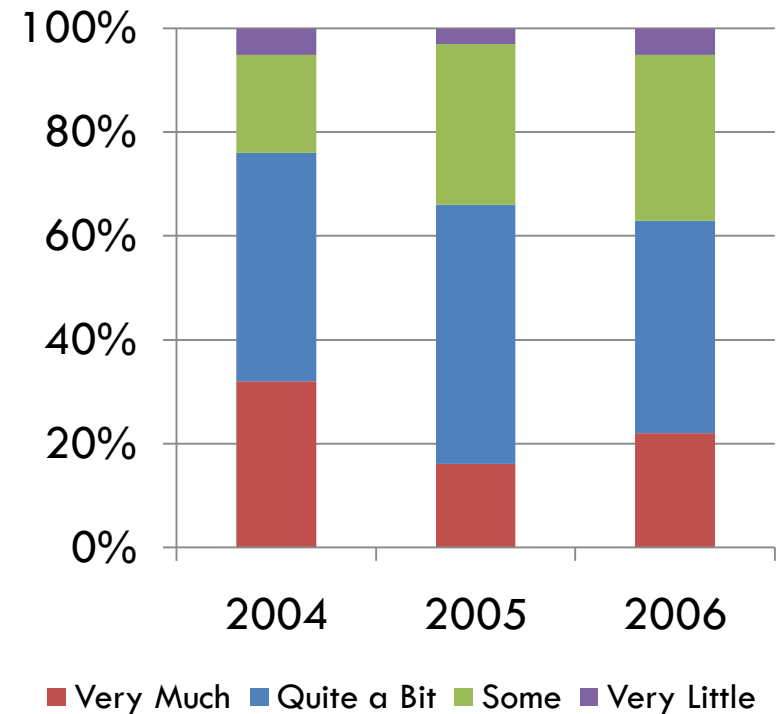
1 = Very Little; 2 = Some; 3 = Quite a Bit; 4 = Very Much

SCE: Extent to Which Institution Provides Support to Help you Succeed **Academically**

First Year Students

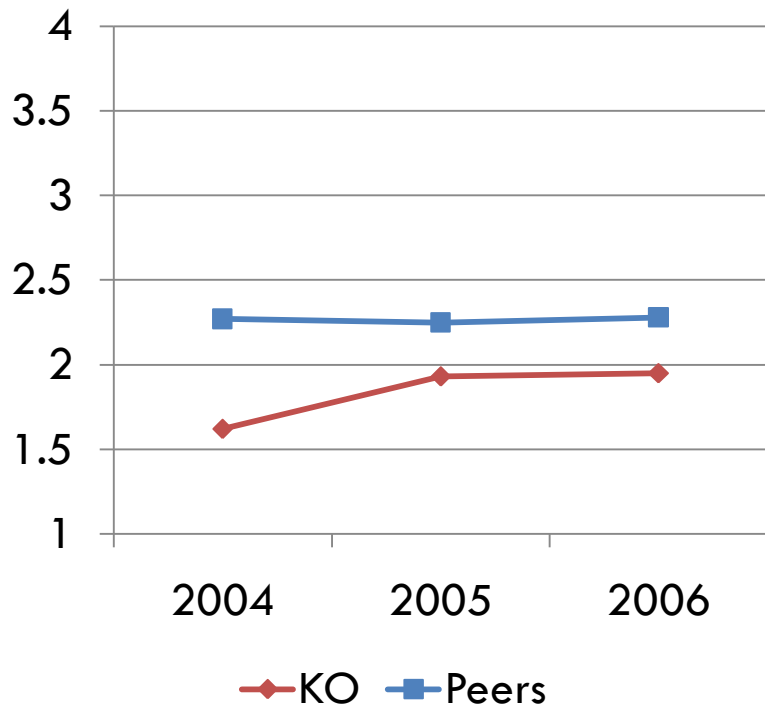


Senior Students

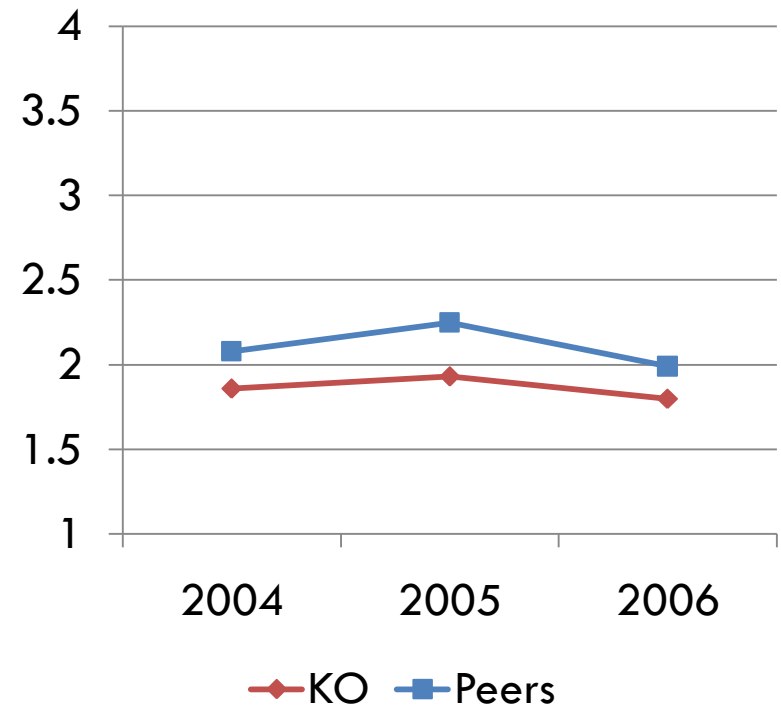


SCE: Extent to Which Institution Provides Support to Help You Cope with **Non-Academic Responsibilities**

Mean for First Year Students



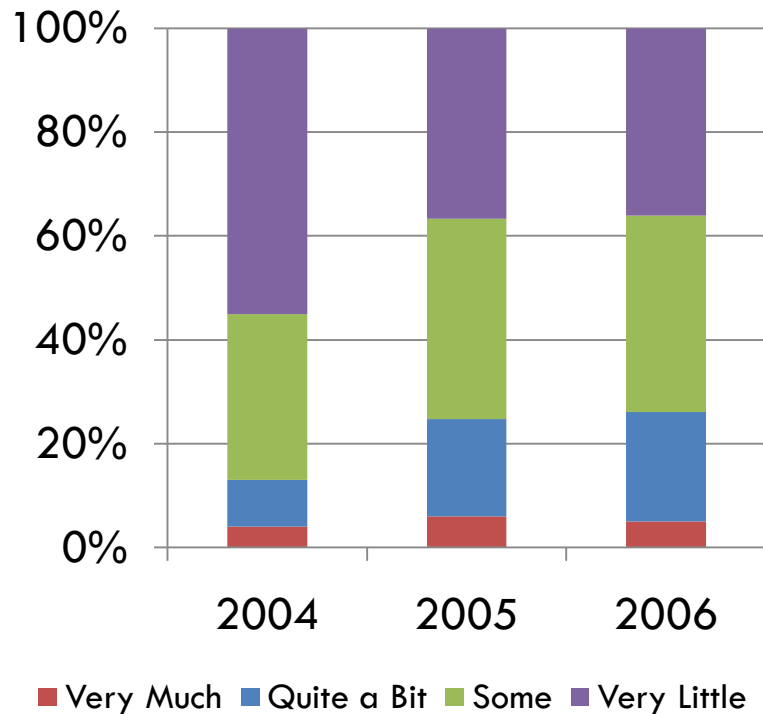
Mean for Senior Students



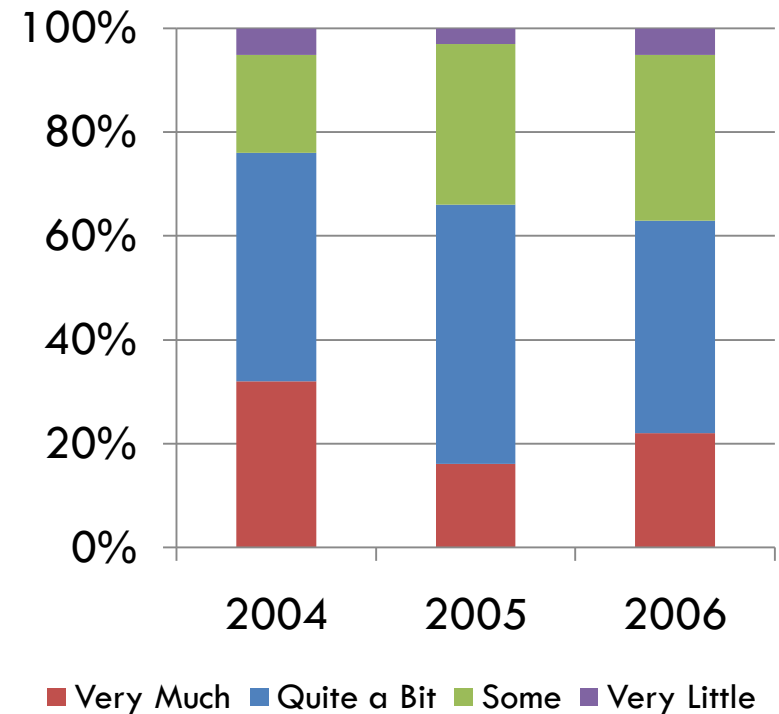
1 = Very Little; 2 = Some; 3 = Quite a Bit; 4 = Very Much

SCE: Extent to Which Institution Provides Support to Help You Cope with **Non-Academic Responsibilities**

First Year Students

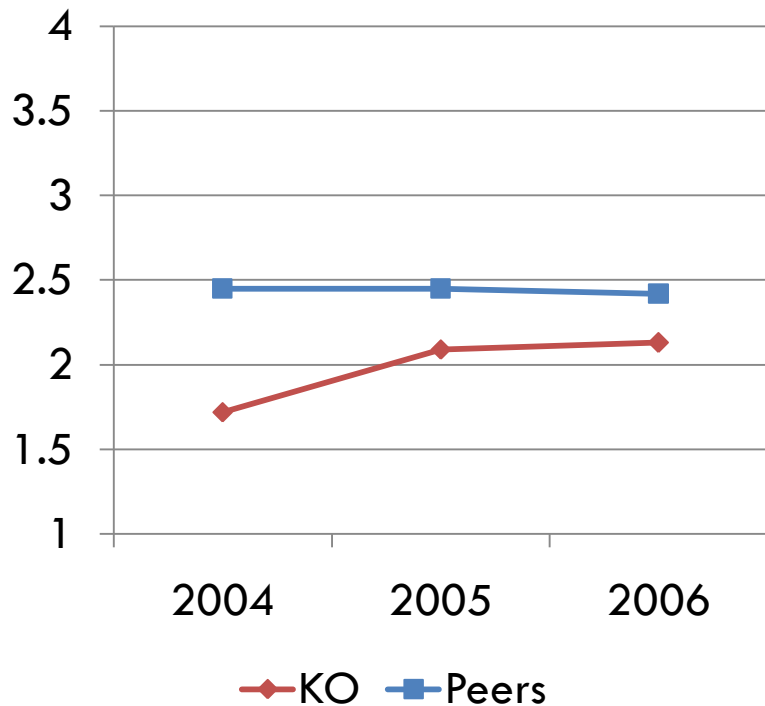


Senior Students

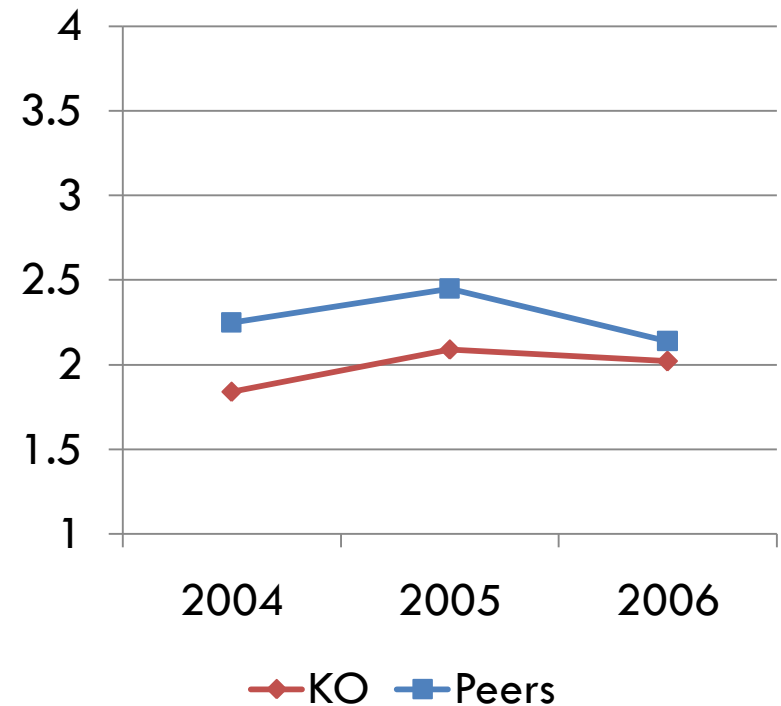


SCE: Extent to Which Institution Provides Support You Need to Thrive Socially

Mean for First Year Students



Mean for Senior Students

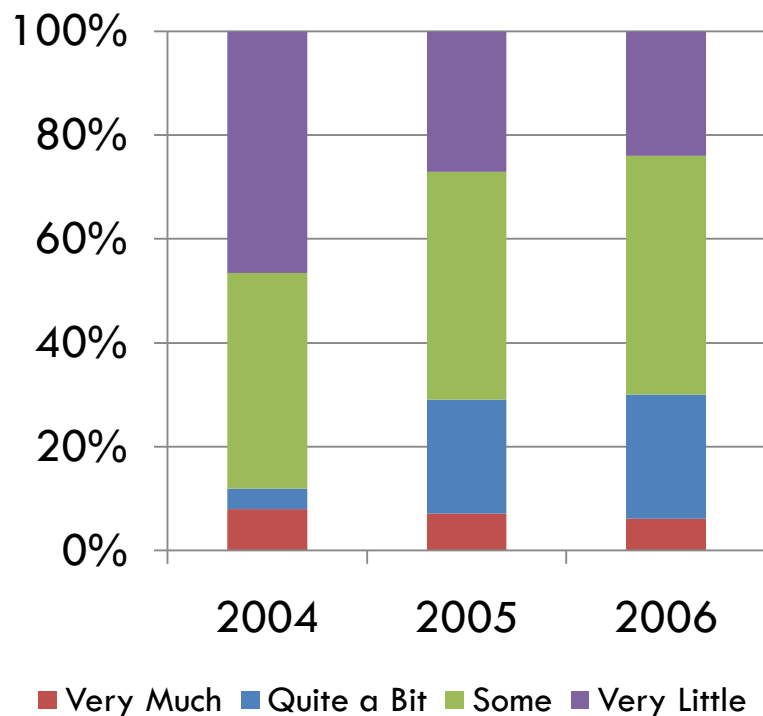


1 = Very Little; 2 = Some; 3 = Quite a Bit; 4 = Very Much

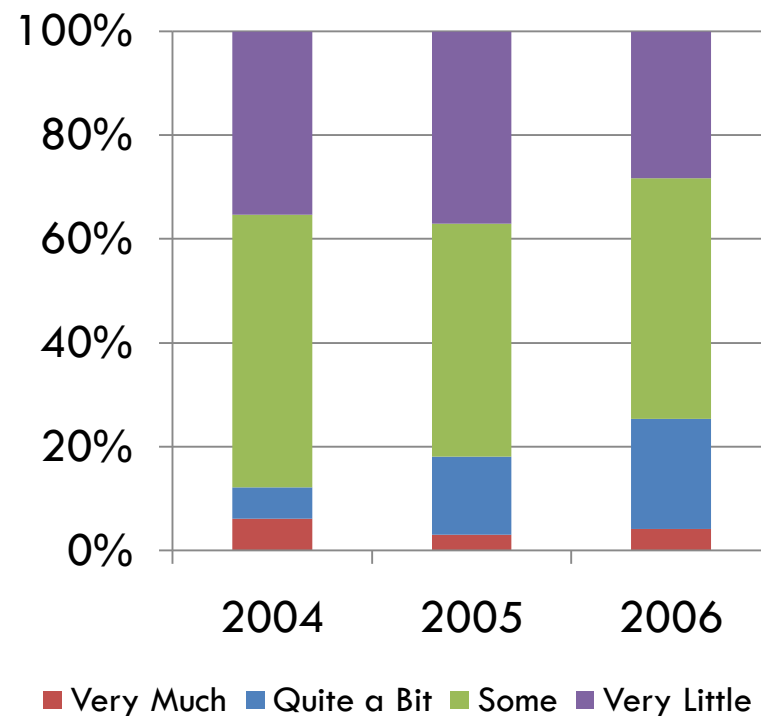
SCE: Extent to Which Institution Provides Support You Need to Thrive Socially



First Year Students



Senior Students



Overall Satisfaction Items



Overall, how would you evaluate the quality of academic advising you have received at your institution?

How would you evaluate your entire educational experience at this institution?

If you could start over again, would you go to the same institution you are now attending?

Academic Advising: Peer Comparison

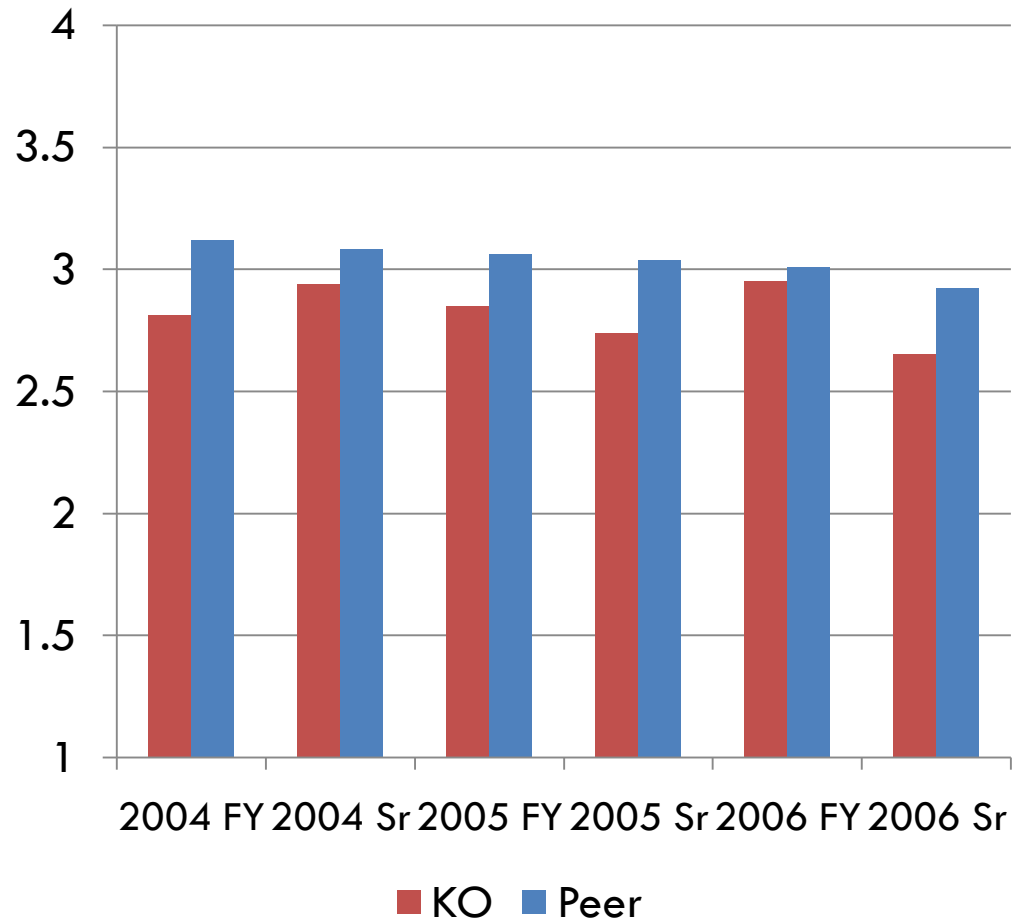
Overall, how would you evaluate the quality of academic advising you have received at your institution?

1 = Poor

2 = Fair

3 = Good

4 = Excellent



Academic Advising: Frequencies

First Year Students



Senior Students



Entire Educational Experience: Peer Comparison

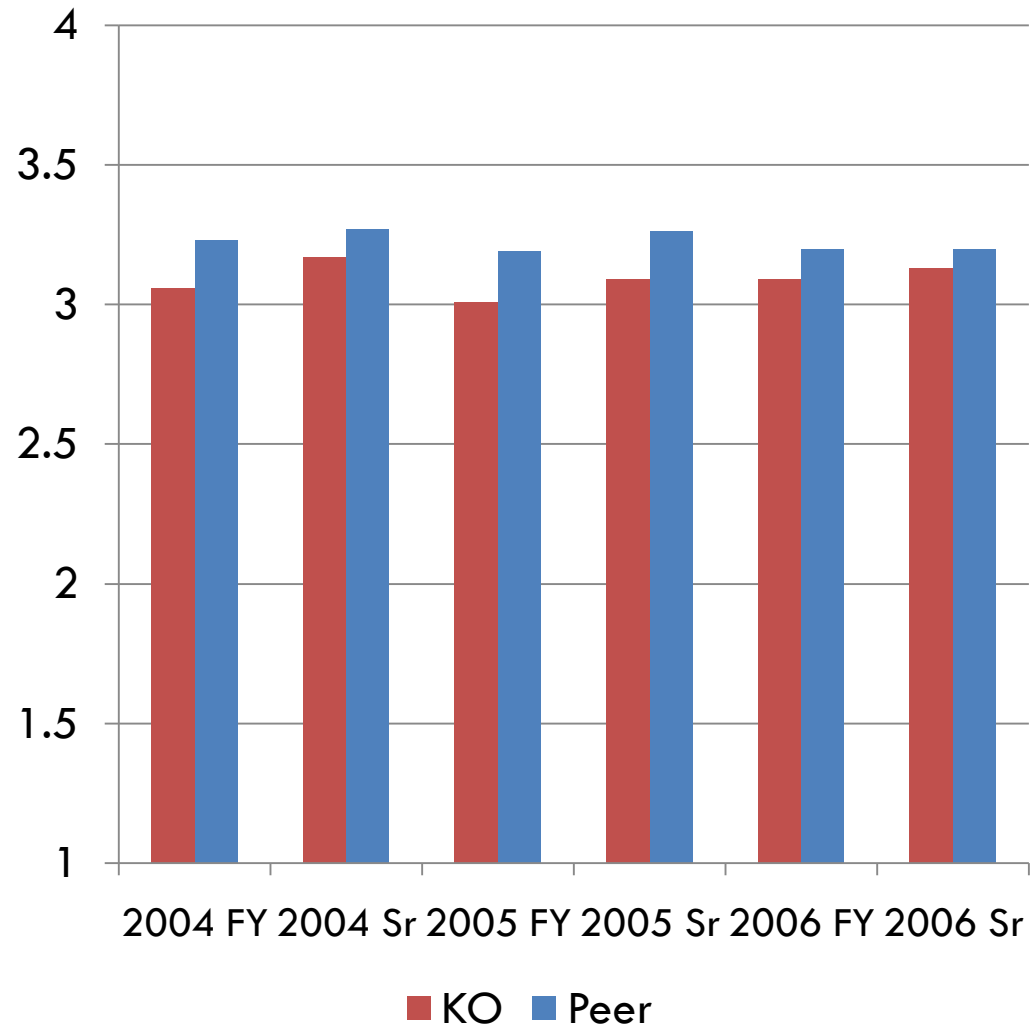
How would you evaluate your entire educational experience at this institution?

1 = Poor

2 = Fair

3 = Good

4 = Excellent



Entire Educational Experience: Frequencies

First Year Students



Senior Students



Choose Same Institution: Peer Comparison

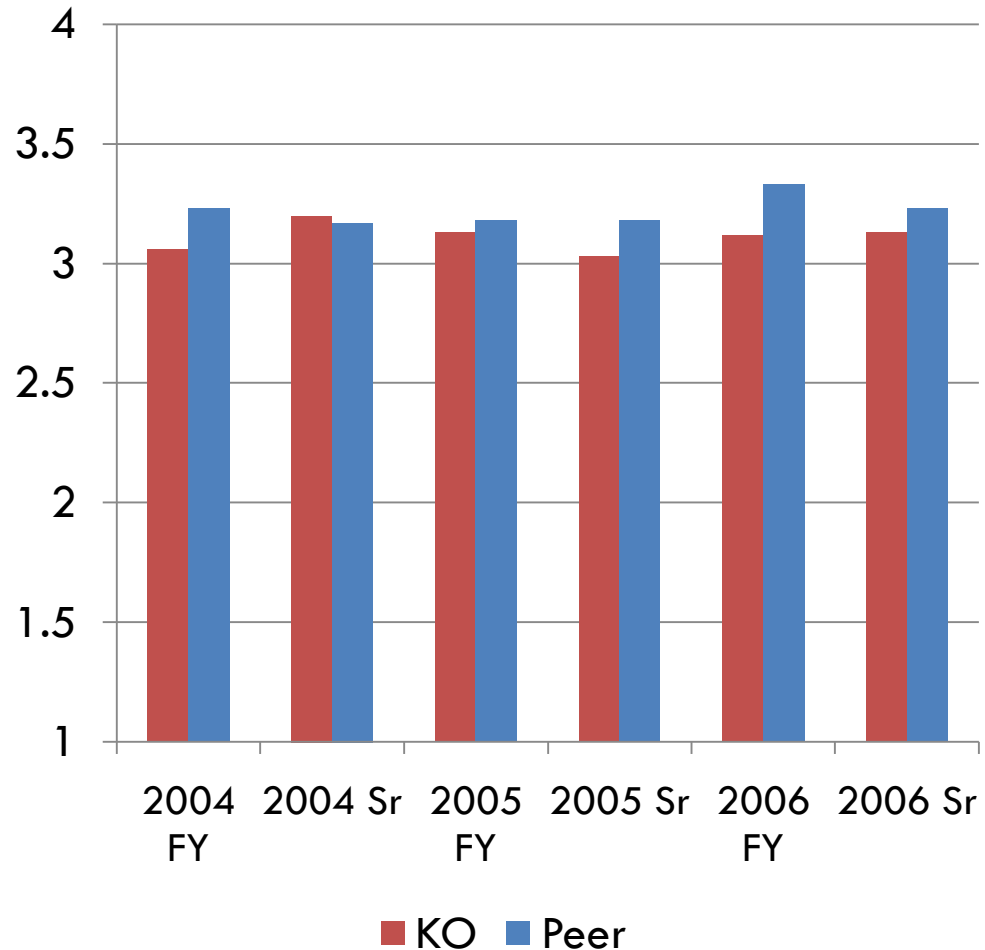
If you could start over again, would you go to the same institution you are now attending?

1 = Definitely No

2 = Probably No

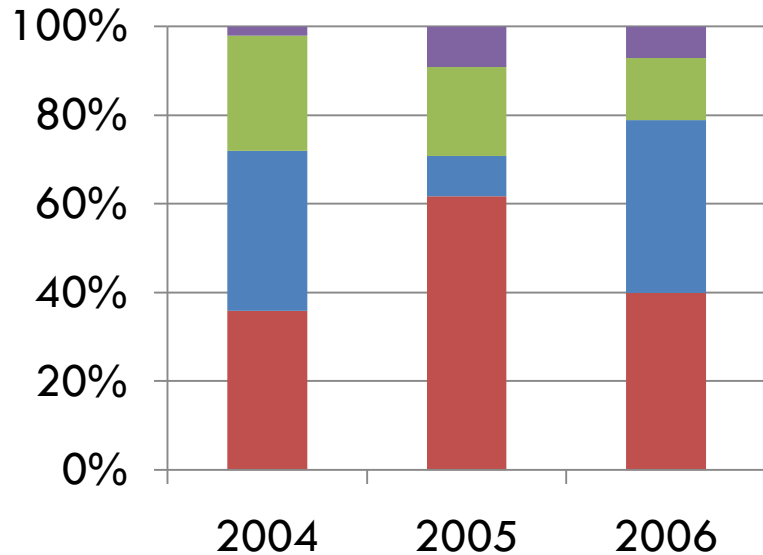
3 = Probably Yes

4 = Definitely Yes



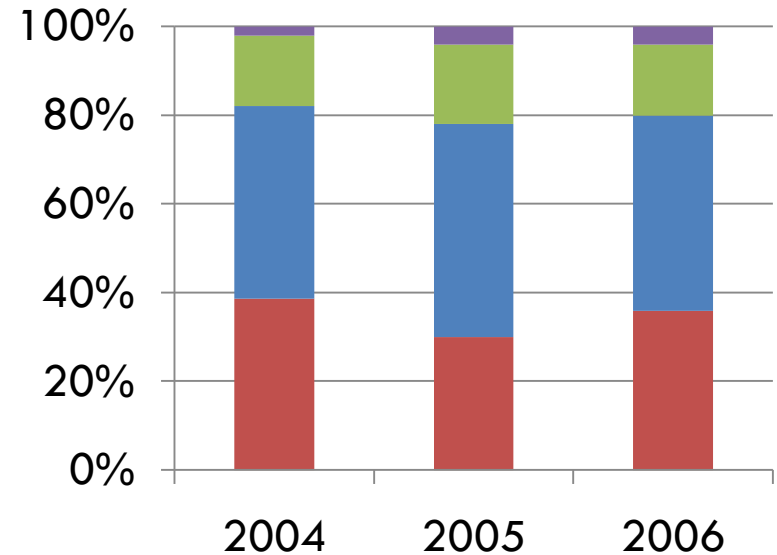
Choose Same Institution: Frequencies

First Year Students



■ Definitely Yes ■ Probably Yes
■ Probably No ■ Definitely No

Senior Students



■ Definitely Yes ■ Probably Yes
■ Probably No ■ Definitely No

