



INDIANA UNIVERSITY KOKOMO

DIVISION OF EDUCATION

Unit Assessment System Continuing-Year Report Spring 2009

www.iuk.edu/education

NCATE

The Standard of Excellence
in Teacher Preparation

September 10, 2009

DoE Faculty, Staff, and Stakeholders:

What follows is the Unit Assessment System Continuing-Year Report for Spring 2009. This document encompasses all assessments administered by the Division of Education, on candidates enrolled in all initial programs offered in the Division during the academic year. This document also includes critical assessment components from stakeholders, which help triangulate the findings that were presented for program improvement at the Spring 2009 Program Improvement Meeting.

This report illustrates the Division's initial attempt to disaggregate and evaluate the student learning outcomes of the P-12 students that our teacher candidates interact with on a daily basis. Through our analysis of these data, the Division has plans to implement other initiatives to capture this data in an even more comprehensive manner.

Respectfully submitted,

Julie Saam, Ph.D.

Table of Contents

Document Name	Page #
Early Childhood Field Experience MetaStandards and Dispositions	5
Elementary Field Experience MetaStandards and Dispositions	9
Secondary Field Experience Metastandards and Dispositions	15
K205 Field Experience Dispositions	19
M101 Field Experience Dispositions	20
Early Childhood ePortfolio	21
Elementary ePortfolio	22
Secondary ePortfolio	23
Program Completer Survey	24
Administrator Survey	26

Spring 2009
Division of Education
Continuing-Year Data Report

Early Childhood (P-3) Spring 2009 Benchmark 4

N=7

Metastandard 1	1.1	1.2	1.3	1.4	1.5			
	3.00	3.00	3.00	2.86	3.29			
Metastandard 2	2.1	2.2	2.3	2.4	2.5	2.6	2.7	
	3.00	2.86	2.86	2.86	3.00	3.00	2.86	
Metastandard 3	3.1	3.2	3.3	3.4	3.5	3.6	3.7	
	3.33	3.43	3.29	3.29	3.14	3.71	3.71	
Metastandard 4	4.1	4.2	4.3	4.4	4.5	4.6	4.7	4.8
	3.00	3.14	3.14	3.29	3.14	3.00	3.29	3.29
Metastandard 5	5.1	5.2	5.3	5.4	5.5	5.6		
	2.80	2.80	3.00	3.00	3.00	3.00		
Metastandard 6	6.1	6.2	6.3	6.4	6.5	6.6	6.7	6.8
	3.17	3.00	3.14	3.29	3.29	3.14	3.29	3.33
Metastandard 7	7.1	7.2	7.3	7.4	7.5			
	2.67	3.00	3.00	3.00	3.00			

Early Childhood (P-3) Benchmark 4

Core Dispositions										
1 Meets obligations and deadlines by appropriate planning										
2 Accepts procedures and rules										
3 Displays appropriate affect and emotions										
4 Demonstrates respect for the feelings, opinions, knowledge, and abilities of others										
5 Demonstrates effective interpersonal skills										
6 Solicits and considers alternative viewpoints										
7 Speaks and/or writes with clarity, fluency, and appropriate grammar										
8 Demonstrates respect and tolerance for individuals from diverse backgrounds										
9 Submits work that reflects high standards										
10 Takes responsibility for own behavior										
11 Demonstrates classroom behaviors that are consistent with the idea of fairness and the belief that all students can learn.										
1	2	3	4	5	6	7	8	9	10	11
4.00	4.00	4.00	4.00	4.00	4.00	4.00	4.00	3.86	4.00	4.00
Professional Dispositions										
1 Demonstrates effective use of problem-solving techniques within the classroom										
2 Demonstrates professional behaviors and expectations										
3 Accepts suggestions positively and modifies behavior appropriately										
4 Functions effectively in a variety of group roles in the academic setting										
5 Creates and manages a safe classroom environment										
6 Reflects upon own behavior and makes appropriate adjustments concerning professional demeanor										
7 Demonstrates appropriate planning and forethought in classroom related activities										
8 Understands multiple perspectives within the classroom										
9 Recognizes and values diversity and cultural differences										
1	2	3	4	5	6	7	8	9		
3.57	3.71	3.86	3.57	3.86	3.71	3.86	3.71	3.57		

Early Childhood (P-3) Spring 2009 Benchmark 6

N=7

Metastandard 1	1.1	1.2	1.3	1.4	1.5			
	3.81	3.94	3.94	3.94	3.81			
Metastandard 2	2.1	2.2	2.3	2.4	2.5	2.6	2.7	
	3.94	3.88	3.88	3.73	3.67	3.80	3.88	
Metastandard 3	3.1	3.2	3.3	3.4	3.5	3.6	3.7	
	3.81	3.87	3.93	3.88	3.77	3.93	3.88	
Metastandard 4	4.1	4.2	4.3	4.4	4.5	4.6	4.7	4.8
	3.81	3.88	3.75	3.63	3.88	3.88	3.81	3.93
Metastandard 5	5.1	5.2	5.3	5.4	5.5	5.6		
	3.87	3.73	3.87	3.87	3.81	3.79		
Metastandard 6	6.1	6.2	6.3	6.4	6.5	6.6	6.7	6.8
	3.75	3.75	3.81	3.88	3.92	3.87	4.00	3.87
Metastandard 7	7.1	7.2	7.3	7.4	7.5			
	3.88	3.71	3.81	3.86	3.88			

Early Childhood (P-3) Benchmark 6

Core Dispositions										
1 Meets obligations and deadlines by appropriate planning										
2 Accepts procedures and rules										
3 Displays appropriate affect and emotions										
4 Demonstrates respect for the feelings, opinions, knowledge, and abilities of others										
5 Demonstrates effective interpersonal skills										
6 Solicits and considers alternative viewpoints										
7 Speaks and/or writes with clarity, fluency, and appropriate grammar										
8 Demonstrates respect and tolerance for individuals from diverse backgrounds										
9 Submits work that reflects high standards										
10 Takes responsibility for own behavior										
11 Demonstrates classroom behaviors that are consistent with the idea of fairness and the belief that all students can learn.										
1	2	3	4	5	6	7	8	9	10	11
3.88	3.88	3.75	3.94	3.88	3.88	3.94	3.94	3.94	4.00	4.00
Professional Dispositions										
1 Demonstrates effective use of problem-solving techniques within the classroom										
2 Demonstrates professional behaviors and expectations										
3 Accepts suggestions positively and modifies behavior appropriately										
4 Functions effectively in a variety of group roles in the academic setting										
5 Creates and manages a safe classroom environment										
6 Reflects upon own behavior and makes appropriate adjustments concerning professional demeanor										
7 Demonstrates appropriate planning and forethought in classroom related activities										
8 Understands multiple perspectives within the classroom										
9 Recognizes and values diversity and cultural differences										
1	2	3	4	5	6	7	8	9		
3.88	3.88	3.94	3.88	3.88	3.94	3.88	3.88	3.94		

Elementary (K-6) Spring 2009 Benchmark 4

N=17

Metastandard 1	1.1	1.2	1.3	1.4				
	2.68	2.76	2.74	2.85				
Metastandard 2	2.1	2.2	2.3	2.4	2.5	2.6		
	2.77	2.76	2.63	2.72	2.74	2.76		
Metastandard 3	3.1	3.2	3.3	3.4	3.5			
	2.83	2.74	2.69	2.68	2.71			
Metastandard 4	4.1	4.2	4.3	4.4	4.5	4.6		
	3.06	3.03	3.03	3.03	3.00	3.00		
Metastandard 5	5.1	5.2	5.3	5.4				
	3.07	3.11	3.12	3.12				
Metastandard 6	6.1	6.2	6.3	6.4				
	3.17	3.14	3.10	3.05				
Metastandard 7	7.1	7.2	7.3	7.4	7.5	7.6		
	3.16	3.16	3.26	3.22	3.17	3.19		

Elementary (K-6) Benchmark 4

Core Dispositions										
1 Meets obligations and deadlines by appropriate planning										
2 Accepts procedures and rules										
3 Displays appropriate affect and emotions										
4 Demonstrates respect for the feelings, opinions, knowledge, and abilities of others										
5 Demonstrates effective interpersonal skills										
6 Solicits and considers alternative viewpoints										
7 Speaks and/or writes with clarity, fluency, and appropriate grammar										
8 Demonstrates respect and tolerance for individuals from diverse backgrounds										
9 Submits work that reflects high standards										
10 Takes responsibility for own behavior										
11 Demonstrates classroom behaviors that are consistent with the idea of fairness and the belief that all students can learn.										
1	2	3	4	5	6	7	8	9	10	11
3.87	3.87	3.70	3.82	3.74	3.74	3.73	3.81	3.78	3.73	3.77
Professional Dispositions										
1 Demonstrates effective use of problem-solving techniques within the classroom										
2 Demonstrates professional behaviors and expectations										
3 Accepts suggestions positively and modifies behavior appropriately										
4 Functions effectively in a variety of group roles in the academic setting										
5 Creates and manages a safe classroom environment										
6 Reflects upon own behavior and makes appropriate adjustments concerning professional demeanor										
7 Demonstrates appropriate planning and forethought in classroom related activities										
8 Understands multiple perspectives within the classroom										
9 Recognizes and values diversity and cultural differences										
1	2	3	4	5	6	7	8	9		
3.59	3.55	3.62	3.45	3.69	3.65	3.53	3.41	3.80		

Elementary (K-6) Spring 2009 Benchmark 5

N=20

Metastandard 1	1.1	1.2	1.3	1.4				
	3.58	3.48	3.61	3.84				
Metastandard 2	2.1	2.2	2.3	2.4	2.5	2.6		
	3.37	3.63	3.47	3.50	3.63	3.80		
Metastandard 3	3.1	3.2	3.3	3.4	3.5			
	3.81	3.81	3.76	3.85	4.00			
Metastandard 4	4.1	4.2	4.3	4.4	4.5	4.6		
	3.78	3.89	3.72	3.52	3.82	3.81		
Metastandard 5	5.1	5.2	5.3	5.4				
	3.78	3.75	3.67	3.88				
Metastandard 6	6.1	6.2	6.3	6.4				
	3.70	3.60	3.67	3.93				
Metastandard 7	7.1	7.2	7.3	7.4	7.5	7.6		
	3.71	3.61	3.31	3.88	3.88	4.00		

Elementary (K-6) Benchmark 5

Core Dispositions										
1 Meets obligations and deadlines by appropriate planning										
2 Accepts procedures and rules										
3 Displays appropriate affect and emotions										
4 Demonstrates respect for the feelings, opinions, knowledge, and abilities of others										
5 Demonstrates effective interpersonal skills										
6 Solicits and considers alternative viewpoints										
7 Speaks and/or writes with clarity, fluency, and appropriate grammar										
8 Demonstrates respect and tolerance for individuals from diverse backgrounds										
9 Submits work that reflects high standards										
10 Takes responsibility for own behavior										
11 Demonstrates classroom behaviors that are consistent with the idea of fairness and the belief that all students can learn.										
1	2	3	4	5	6	7	8	9	10	11
3.82	3.82	3.77	3.82	3.85	3.89	3.80	3.75	3.95	3.86	3.86
Professional Dispositions										
1 Demonstrates effective use of problem-solving techniques within the classroom										
2 Demonstrates professional behaviors and expectations										
3 Accepts suggestions positively and modifies behavior appropriately										
4 Functions effectively in a variety of group roles in the academic setting										
5 Creates and manages a safe classroom environment										
6 Reflects upon own behavior and makes appropriate adjustments concerning professional demeanor										
7 Demonstrates appropriate planning and forethought in classroom related activities										
8 Understands multiple perspectives within the classroom										
9 Recognizes and values diversity and cultural differences										
1	2	3	4	5	6	7	8	9		
3.85	3.73	3.85	4.00	4.00	3.89	3.95	3.85	3.81		

Elementary (K-6) Spring 2009 Benchmark 6

N=23

Metastandard 1	1.1	1.2	1.3	1.4				
	3.90	3.87	3.87	3.93				
Metastandard 2	2.1	2.2	2.3	2.4	2.5	2.6		
	3.83	3.89	3.89	3.89	3.90	3.90		
Metastandard 3	3.1	3.2	3.3	3.4	3.5			
	3.90	3.93	3.83	3.93	3.93			
Metastandard 4	4.1	4.2	4.3	4.4	4.5	4.6		
	3.93	3.90	3.90	3.87	3.87	3.87		
Metastandard 5	5.1	5.2	5.3	5.4				
	3.89	3.96	3.93	3.96				
Metastandard 6	6.1	6.2	6.3	6.4				
	3.93	3.90	3.97	3.86				
Metastandard 7	7.1	7.2	7.3	7.4	7.5	7.6		
	3.89	3.89	3.87	3.85	3.80	3.89		

Elementary (K-6) Benchmark 6

Core Dispositions										
1 Meets obligations and deadlines by appropriate planning										
2 Accepts procedures and rules										
3 Displays appropriate affect and emotions										
4 Demonstrates respect for the feelings, opinions, knowledge, and abilities of others										
5 Demonstrates effective interpersonal skills										
6 Solicits and considers alternative viewpoints										
7 Speaks and/or writes with clarity, fluency, and appropriate grammar										
8 Demonstrates respect and tolerance for individuals from diverse backgrounds										
9 Submits work that reflects high standards										
10 Takes responsibility for own behavior										
11 Demonstrates classroom behaviors that are consistent with the idea of fairness and the belief that all students can learn.										
1	2	3	4	5	6	7	8	9	10	11
3.90	3.90	3.86	3.90	3.90	3.92	3.80	3.88	3.94	3.90	3.92
Professional Dispositions										
1 Demonstrates effective use of problem-solving techniques within the classroom										
2 Demonstrates professional behaviors and expectations										
3 Accepts suggestions positively and modifies behavior appropriately										
4 Functions effectively in a variety of group roles in the academic setting										
5 Creates and manages a safe classroom environment										
6 Reflects upon own behavior and makes appropriate adjustments concerning professional demeanor										
7 Demonstrates appropriate planning and forethought in classroom related activities										
8 Understands multiple perspectives within the classroom										
9 Recognizes and values diversity and cultural differences										
1	2	3	4	5	6	7	8	9		
3.86	3.86	3.92	3.98	3.96	3.94	3.96	3.92	3.90		

Secondary (5-12) Spring 2009 Benchmark 4

N=11

Metastandard 1	1.1	1.2	1.3	1.4				
	3.13	3.00	2.89	2.89				
Metastandard 2	2.1	2.2	2.3	2.4	2.5	2.6		
	3.10	3.00	2.88	2.89	3.10	2.90		
Metastandard 3	3.1	3.2	3.3	3.4	3.5			
	3.08	3.00	3.09	3.40	3.67			
Metastandard 4	4.1	4.2	4.3	4.4	4.5	4.6		
	3.09	3.15	3.25	3.00	3.10	3.08		
Metastandard 5	5.1	5.2	5.3	5.4				
	3.63	3.56	3.33	3.56				
Metastandard 6	6.1	6.2	6.3	6.4				
	3.44	3.33	3.42	3.80				
Metastandard 7	7.1	7.2	7.3	7.4	7.5	7.6		
	3.75	3.75	3.67	3.25	3.00	3.00		

Secondary (5-12) Benchmark 4

Core Dispositions										
1 Meets obligations and deadlines by appropriate planning										
2 Accepts procedures and rules										
3 Displays appropriate affect and emotions										
4 Demonstrates respect for the feelings, opinions, knowledge, and abilities of others										
5 Demonstrates effective interpersonal skills										
6 Solicits and considers alternative viewpoints										
7 Speaks and/or writes with clarity, fluency, and appropriate grammar										
8 Demonstrates respect and tolerance for individuals from diverse backgrounds										
9 Submits work that reflects high standards										
10 Takes responsibility for own behavior										
11 Demonstrates classroom behaviors that are consistent with the idea of fairness and the belief that all students can learn.										
1	2	3	4	5	6	7	8	9	10	11
3.69	4.00	3.85	4.00	3.92	3.67	3.31	3.77	3.46	3.85	3.85
Professional Dispositions										
1 Demonstrates effective use of problem-solving techniques within the classroom										
2 Demonstrates professional behaviors and expectations										
3 Accepts suggestions positively and modifies behavior appropriately										
4 Functions effectively in a variety of group roles in the academic setting										
5 Creates and manages a safe classroom environment										
6 Reflects upon own behavior and makes appropriate adjustments concerning professional demeanor										
7 Demonstrates appropriate planning and forethought in classroom related activities										
8 Understands multiple perspectives within the classroom										
9 Recognizes and values diversity and cultural differences										
1	2	3	4	5	6	7	8	9		
3.42	3.54	3.69	3.70	3.27	3.40	3.42	3.50	3.50		

Secondary (5-12) Spring 2009 Benchmark 5/6

N=10

Metastandard 1	1.1	1.2	1.3	1.4				
	3.64	3.64	3.57	3.79				
Metastandard 2	2.1	2.2	2.3	2.4	2.5	2.6		
	3.79	3.86	3.57	3.57	3.79	4.00		
Metastandard 3	3.1	3.2	3.3	3.4	3.5			
	3.79	3.71	3.57	3.79	3.36			
Metastandard 4	4.1	4.2	4.3	4.4	4.5	4.6		
	3.92	3.79	3.57	3.43	3.57	3.71		
Metastandard 5	5.1	5.2	5.3	5.4				
	3.57	3.71	3.64	3.57				
Metastandard 6	6.1	6.2	6.3	6.4				
	3.64	3.71	3.89	4.00				
Metastandard 7	7.1	7.2	7.3	7.4	7.5	7.6		
	3.78	3.57	4.00	4.00	4.00	4.00		

Secondary (5-12) Benchmark 5/6

Core Dispositions										
1 Meets obligations and deadlines by appropriate planning										
2 Accepts procedures and rules										
3 Displays appropriate affect and emotions										
4 Demonstrates respect for the feelings, opinions, knowledge, and abilities of others										
5 Demonstrates effective interpersonal skills										
6 Solicits and considers alternative viewpoints										
7 Speaks and/or writes with clarity, fluency, and appropriate grammar										
8 Demonstrates respect and tolerance for individuals from diverse backgrounds										
9 Submits work that reflects high standards										
10 Takes responsibility for own behavior										
11 Demonstrates classroom behaviors that are consistent with the idea of fairness and the belief that all students can learn.										
1	2	3	4	5	6	7	8	9	10	11
3.79	3.64	3.79	4.00	3.85	3.71	3.86	3.93	3.79	3.86	3.93
Professional Dispositions										
1 Demonstrates effective use of problem-solving techniques within the classroom										
2 Demonstrates professional behaviors and expectations										
3 Accepts suggestions positively and modifies behavior appropriately										
4 Functions effectively in a variety of group roles in the academic setting										
5 Creates and manages a safe classroom environment										
6 Reflects upon own behavior and makes appropriate adjustments concerning professional demeanor										
7 Demonstrates appropriate planning and forethought in classroom related activities										
8 Understands multiple perspectives within the classroom										
9 Recognizes and values diversity and cultural differences										
1	2	3	4	5	6	7	8	9		
3.57	3.86	3.79	3.82	3.86	3.71	3.64	3.79	3.86		

K205 Field Experience

Core Dispositions										
1 Meets obligations and deadlines by appropriate planning										
2 Accepts procedures and rules										
3 Displays appropriate affect and emotions										
4 Demonstrates respect for the feelings, opinions, knowledge, and abilities of others										
5 Demonstrates effective interpersonal skills										
6 Solicits and considers alternative viewpoints										
7 Speaks and/or writes with clarity, fluency, and appropriate grammar										
8 Demonstrates respect and tolerance for individuals from diverse backgrounds										
9 Submits work that reflects high standards										
10 Takes responsibility for own behavior										
11 Demonstrates classroom behaviors that are consistent with the idea of fairness and the belief that all students can learn.										
1	2	3	4	5	6	7	8	9	10	11
3.21	3.29	3.36	3.32	3.46	3.43	3.32	3.39	3.89	3.25	3.43
Professional Dispositions										
1 Demonstrates effective use of problem-solving techniques within the classroom										
2 Demonstrates professional behaviors and expectations										
3 Accepts suggestions positively and modifies behavior appropriately										
4 Functions effectively in a variety of group roles in the academic setting										
5 Creates and manages a safe classroom environment										
6 Reflects upon own behavior and makes appropriate adjustments concerning professional demeanor										
7 Demonstrates appropriate planning and forethought in classroom related activities										
8 Understands multiple perspectives within the classroom										
9 Recognizes and values diversity and cultural differences										
1	2	3	4	5	6	7	8	9		
1.14	1.54	1.04	1.32	1.14	1.14	1.11	1.18	1.14		

M101 Field Experience

Core Dispositions										
1 Meets obligations and deadlines by appropriate planning										
2 Accepts procedures and rules										
3 Displays appropriate affect and emotions										
4 Demonstrates respect for the feelings, opinions, knowledge, and abilities of others										
5 Demonstrates effective interpersonal skills										
6 Solicits and considers alternative viewpoints										
7 Speaks and/or writes with clarity, fluency, and appropriate grammar										
8 Demonstrates respect and tolerance for individuals from diverse backgrounds										
9 Submits work that reflects high standards										
10 Takes responsibility for own behavior										
11 Demonstrates classroom behaviors that are consistent with the idea of fairness and the belief that all students can learn.										
1	2	3	4	5	6	7	8	9	10	11
3.91	3.96	3.85	3.90	3.74	3.91	3.78	3.88	3.84	3.89	3.91
Professional Dispositions										
1 Demonstrates effective use of problem-solving techniques within the classroom										
2 Demonstrates professional behaviors and expectations										
3 Accepts suggestions positively and modifies behavior appropriately										
4 Functions effectively in a variety of group roles in the academic setting										
5 Creates and manages a safe classroom environment										
6 Reflects upon own behavior and makes appropriate adjustments concerning professional demeanor										
7 Demonstrates appropriate planning and forethought in classroom related activities										
8 Understands multiple perspectives within the classroom										
9 Recognizes and values diversity and cultural differences										
1	2	3	4	5	6	7	8	9		
3.42	3.61	3.68	3.66	3.41	3.59	3.41	3.33	3.59		

Formative and Summative Aggregated Portfolio Scores Spring 2009

Overall Formative (P-3) Scores														
Student Name	Metastandard #1		Metastandard #2		Metastandard #3		Metastandard #4		Metastandard #5		Metastandard #6		Metastandard #7	
	Artifact	Reflection	Artifact	Reflection	Artifact	Reflection	Artifact	Reflection	Artifact	Reflection	Artifact	Reflection	Artifact	Reflection
Average Rater score	2.33	2.00	2.33	2.33	2.33	2.17	2.83	1.67	2.33	1.67	2.00	1.67	2.33	2.33
		2.17		2.33		2.25		2.25		2.00		1.83		2.33

Overall Mean Score 2.17

Overall Summative (P-3) Scores														
Student Name	Metastandard #1		Metastandard #2		Metastandard #3		Metastandard #4		Metastandard #5		Metastandard #6		Metastandard #7	
	Artifact	Reflection	Artifact	Reflection	Artifact	Reflection	Artifact	Reflection	Artifact	Reflection	Artifact	Reflection	Artifact	Reflection
Average Rater Score	3.06	2.88	2.90	2.65	3.00	2.75	3.05	2.80	3.10	2.65	3.05	2.75	3.00	2.95
		2.97		2.78		2.88		2.93		2.88		2.90		2.98

Overall Mean Score 2.90

Formative and Summative Aggregated Portfolio Scores Spring 2009

Overall Formative (K-6) Scores														
Student Name	Metastandard #1		Metastandard #2		Metastandard #3		Metastandard #4		Metastandard #5		Metastandard #6		Metastandard #7	
	Artifact	Reflection	Artifact	Reflection	Artifact	Reflection	Artifact	Reflection	Artifact	Reflection	Artifact	Reflection	Artifact	Reflection
Average Rater score	2	2	2	1.8	2	1.4	2	1.6	2	1.8	2.2	2	2	1.8

	2		1.9		1.7		1.8		1.9		2.1		1.9
--	---	--	-----	--	-----	--	-----	--	-----	--	-----	--	-----

Overall Mean Score 1.90

Overall Summative (K-6) Scores														
Student Name	Metastandard #1		Metastandard #2		Metastandard #3		Metastandard #4		Metastandard #5		Metastandard #6		Metastandard #7	
	Artifact	Reflection	Artifact	Reflection	Artifact	Reflection	Artifact	Reflection	Artifact	Reflection	Artifact	Reflection	Artifact	Reflection
Average Rater Score	2.89	2.91	2.59	2.96	2.77	2.91	2.83	2.98	2.88	2.95	2.91	2.87	2.85	2.89

	2.90		2.77		2.84		2.90		2.92		2.89		2.87
--	------	--	------	--	------	--	------	--	------	--	------	--	------

Overall Mean Score 2.87

Formative and Summative Aggregated Portfolio Scores Spring 2009

Overall Formative (5-12) Scores														
Student Name	Metastandard #1		Metastandard #2		Metastandard #3		Metastandard #4		Metastandard #5		Metastandard #6		Metastandard #7	
	Artifact	Reflection	Artifact	Reflection	Artifact	Reflection	Artifact	Reflection	Artifact	Reflection	Artifact	Reflection	Artifact	Reflection
Average Rater score	2.11	1.89	2.00	1.89	2.00	1.78	2.22	1.56	2.11	1.78	2.11	1.78	2.22	1.56
	2.00		1.94		1.89		1.89		1.94		1.94		1.89	

Overall Mean Score 1.93

Overall Summative (5-12) Scores														
Student Name	Metastandard #1		Metastandard #2		Metastandard #3		Metastandard #4		Metastandard #5		Metastandard #6		Metastandard #7	
	Artifact	Reflection	Artifact	Reflection	Artifact	Reflection	Artifact	Reflection	Artifact	Reflection	Artifact	Reflection	Artifact	Reflection
Average Rater Score	2.90	2.90	2.90	3.05	3.00	2.95	3.10	3.05	2.86	2.95	2.81	3.00	2.62	2.48
	2.90		2.98		2.98		3.07		2.90		2.90		2.55	

Overall Mean Score 2.90

Program Completer Survey 08-09

After completing the Teacher Education Program at Indiana University Kokomo, how prepared are you to do the following:

1. Set challenging and appropriate expectations of learning and performance for students.

1=Not at all Prepare 2=Poorly Prepared 3=Adequately Prepared 4=Well Prepared 5=Extremely Well Prepared

2. Understand how students' social, emotional, physical, and cognitive development influences learning.

3. Understand how different students in the classroom are learning.

4. Identify and obtain materials and use community resources to create a multicultural curriculum.

5. Choose teaching strategies to meet different student needs.

6. Understand how students' family and cultural backgrounds may influence learning.

7. Help all children achieve high academic standards.

8. Develop a curriculum that builds on students' experiences, interests, and abilities.

9. Evaluate curriculum materials for their usefulness and appropriateness for students.

10. Use technology in the classroom.

11. Teach subject matter concepts, knowledge and skills in ways that enable students to learn.

12. Choose teaching strategies for different instructional purposes.

13. Maintain an orderly and purposeful learning environment to improve student learning and performance.

14. Use a variety of assessment to determine student strengths and learning needs.

15. Assess and tracks student achievement in order to evaluate student learning.

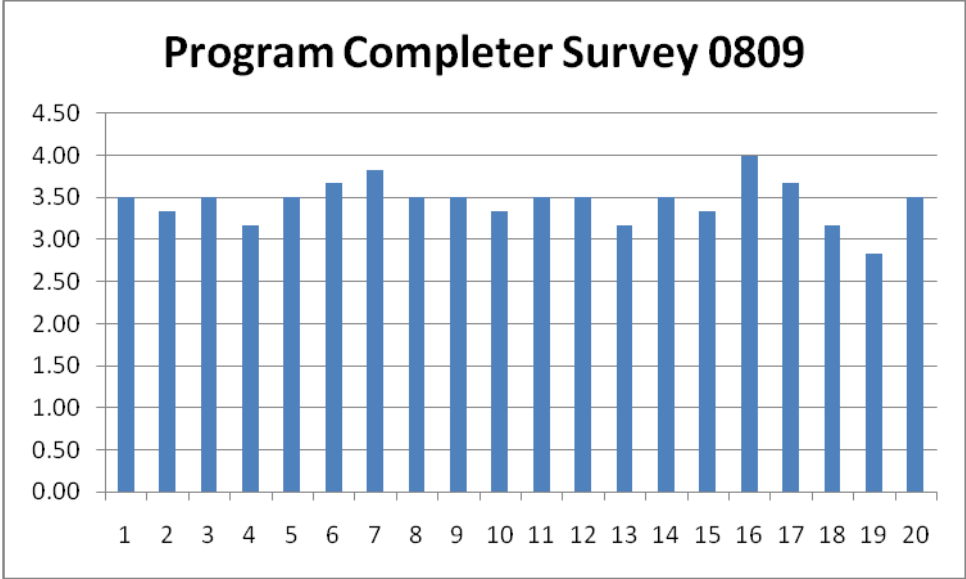
16. Evaluate and reflect on your practice to improve instruction.

17. Plan and solve problems with colleagues.

18. Assume leadership responsibilities at school.

19. Work with parents/guardians and families to better understand students and to support their learning.

20. Understand how factors in the students' environment outside of school may influence their life and learning.



Administrators Survey 08-09

Please answer the following 20 questions to the best of your ability. Your responses are completely anonymous. At your school, how prepared are the Indiana University Kokomo teacher candidates or resident teachers prepared to do the following

1. Set challenging and appropriate expectations of learning and performance for students. *1=Not at all Prepare 2=Poorly Prepared 3=Adequately Prepared 4=Well Prepared 5=Extremely Well Prepared*
2. Understand how students' social, emotional, physical, and cognitive development influences learning.
3. Understand how different students in the classroom are learning.
4. Identify and obtain materials and use community resources to create a multicultural curriculum.
5. Choose teaching strategies to meet different student needs.
6. Understand how students' family and cultural backgrounds may influence learning.
7. Help all children achieve high academic standards.
8. Develop a curriculum that builds on students' experiences, interests, and abilities.
9. Evaluate curriculum materials for their usefulness and appropriateness for students.
10. Use technology in the classroom.
11. Teach subject matter concepts, knowledge and skills in ways that enable students to learn.
12. Choose teaching strategies for different instructional purposes.
13. Maintain an orderly and purposeful learning environment.
14. Use a variety of assessment to determine student strengths, needs and programs.
15. Evaluate and reflect on your practice to improve instruction.
16. Plan and solve problems with colleagues.
17. Assume leadership responsibilities at school.
18. Work with parents and families to better understand students and to support their learning.

Based on your observations and interactions, please answer the next two questions to the best of your ability.

19. Indiana University Kokomo teachers demonstrate fairness in their approach to teaching and learning and their professional interactions with students.
20. Indiana University Kokomo teachers demonstrate an attitude and belief that all students can learn.

Adminstrator Survey 0809

