



St Joseph County

At

A

Glance





***Institute for Applied Community Research  
Indiana University South Bend  
1700 Mishawaka Avenue  
P.O. Box 7111  
South Bend, IN 46634  
(219)237-4803***

***Price: \$8.00***

INDIANA UNIVERSITY  
SOUTH BEND

SCHOOL OF PUBLIC  
AND ENVIRONMENTAL  
AFFAIRS



*This guide is a project of the Institute for Applied Community Research at Indiana University South Bend. It is our hope that those who live and do business here--and those who might--will find it useful.*

*Our intent is to be comprehensive and correct and to revise and up-date "At a Glance" periodically. Any omissions and errors are the responsibility of the editor, and apologies are made in advance. If readers find errors or deletions, advise us accordingly.*

*Many thanks to Julie Clifford who spent many hours as a research and editorial assistant. We appreciate the cover design which was produced by Jeffrey Myers.*

*Leda McIntyre Hall, Editor  
Director, Institute for Applied Community Research*

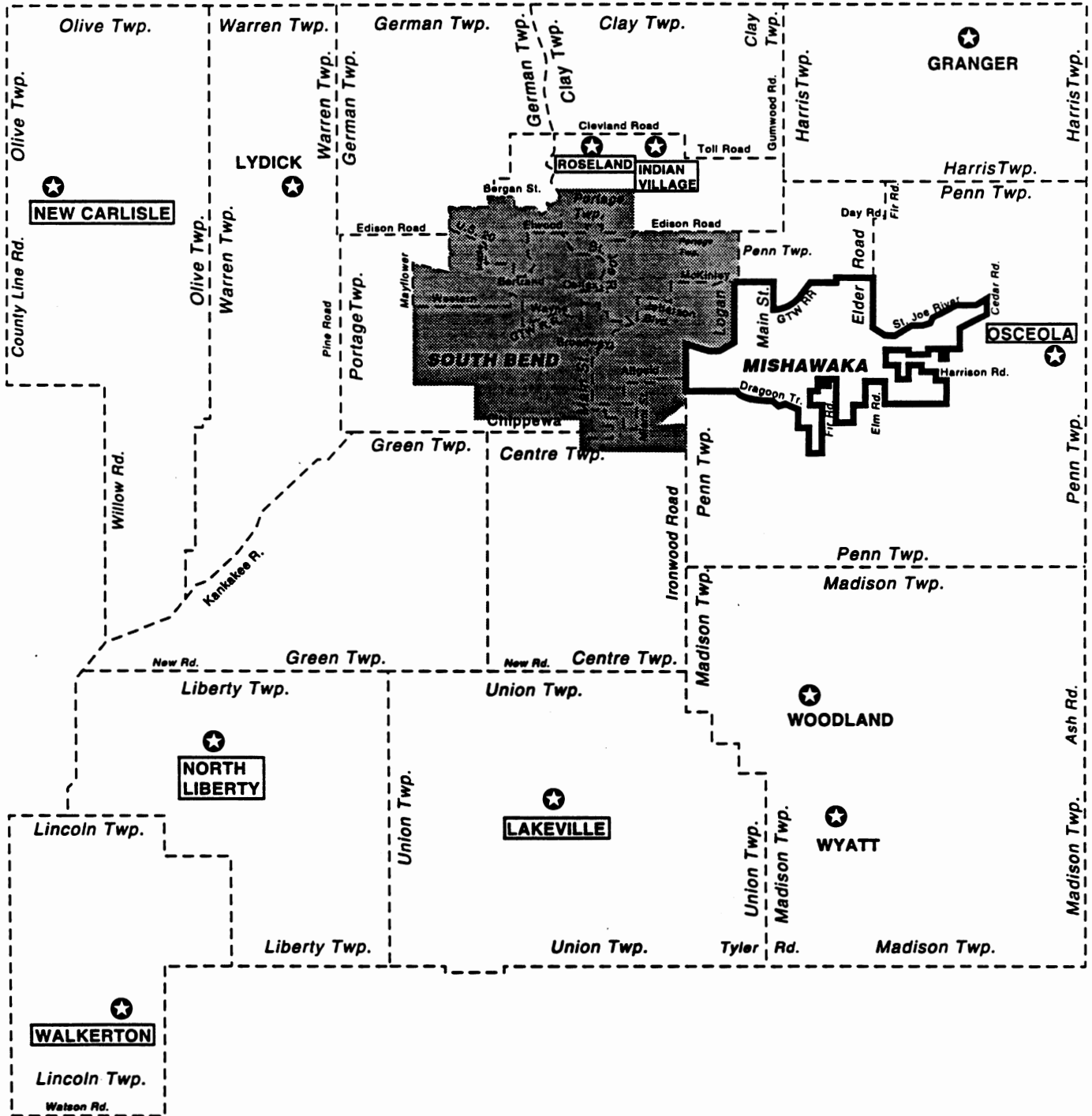
1700 Mishawaka Avenue  
Post Office Box 7111  
South Bend, Indiana  
46634-7111

219-237-4131  
Fax: 219-237-6514

## TABLE OF CONTENTS

Map of St. Joseph County .....	1
St. Joseph County Profile .....	2
Elected Officials .....	3
Organizational Chart .....	7
Public Meetings .....	10
Indian Village .....	11
Lakeville .....	12
New Carlisle .....	13
North Liberty .....	14
Osceola .....	15
Roseland .....	16
Walkerton .....	17
South Bend .....	18
Organizational Chart	
City Officials .....	19
Public Meetings .....	22
Mishawaka .....	25
Organizational Chart	
City Officials .....	26
Public Meetings .....	29
Culture and Recreation .....	30
Business and Labor .....	33
Housing .....	37
Education .....	41
Child Care Facilities .....	45
Transportation .....	47
Health Care .....	49

# MAP OF ST. JOSEPH COUNTY, INDIANA



## ST. JOSEPH COUNTY

St. Joseph County lies conveniently in the North Central region of the Midwest, just 90 miles east of Chicago. South Bend and Mishawaka are the two major cities within the county, while the towns of Indian Village, Lakeville, New Carlisle, North Liberty, Osceola, Roseland, and Walkerton incorporate the county's outlying areas.

With a population of 247,052, St. Joseph County is the fourth largest county in the state of Indiana. South Bend is at the heart of a region known as "Michiana," an 11-county area encompassing Northern Indiana and Southwestern Michigan.

### St. Joseph County

Population	247,052
<i>White</i>	216,911
<i>African American</i>	24,212
<i>Other</i>	5,929
Land Area	457.3 sq. mi.
Population Density	540.2 sq. mi.
Net Migration 1980-90	-8,300
Unemployment Rate	5.4%
Per Capita Income	\$16,545
Median Value Owner	\$50,800
Housing Owner Occupied	72%
Median Contract Rent	\$325/month
# of Households	92,365
# Married Couples	50,364

Source: 1990 U. S. Census of the Population

## **ST. JOSEPH COUNTY ELECTED OFFICIALS**

### **U.S. House of Representatives, 3rd District**

**Timothy J. Roemer (D)**  
415 Cannon House Office Building  
Washington, D.C. 20515  
Ph: (202) 225-3915

**Indiana Address:**  
217 North Main Street  
South Bend, IN 46601  
Ph: (219) 288-3301 or  
(800) 439-3518

### **United States Senators**

**Richard G. Lugar (R)**  
306 Hart Building  
Washington, D.C. 20510  
Ph: (202) 224-4814

**Indiana Address:**  
10 W. Market Tower, Suite 1180  
Indianapolis, IN 46204  
Ph: (317) 226-5555

**Daniel Coats (R)**  
Suite 411 Russell Building  
Washington, D.C. 20510  
Ph: (202) 224-5623

**Indiana Address:**  
10 W. Market Tower, Suite 1180  
Indianapolis, IN 46204  
Ph: (317) 226-5555

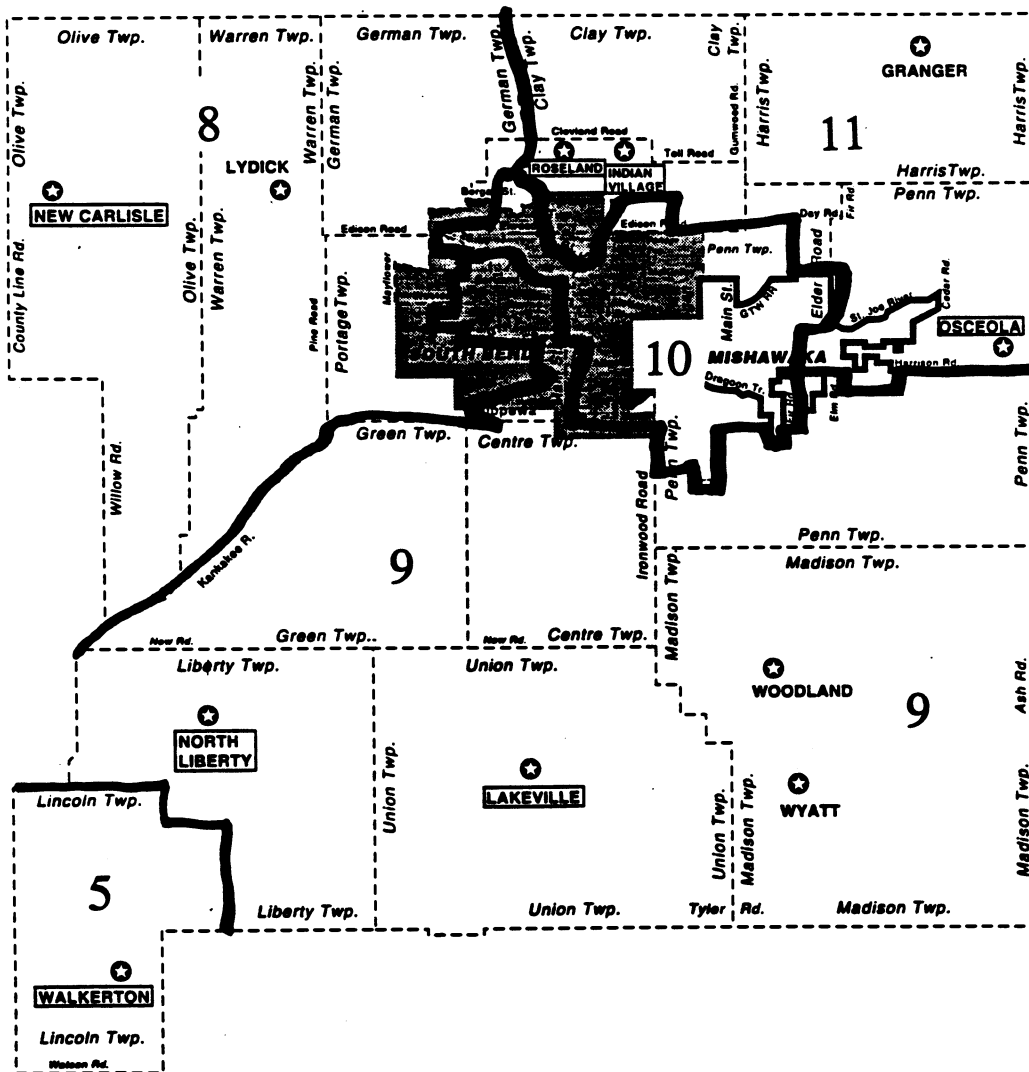
State Senate

Four-year terms. One-half of the senators are up for re-election every two (even) numbered years.

District 5	William Alexa	(D)	'96
District 8	Anita Bowser	(D)	'96
District 9	Kent Adams	(R)	'96
District 10	Douglas A. Hunt	(D)	'96
District 11	Joseph C. Zakas	(R)	'98

Public Information Division, Ph: (317) 232-9856  
 Senate Message Center, Ph: 1-800-382-9467

Map of State Senate Districts:





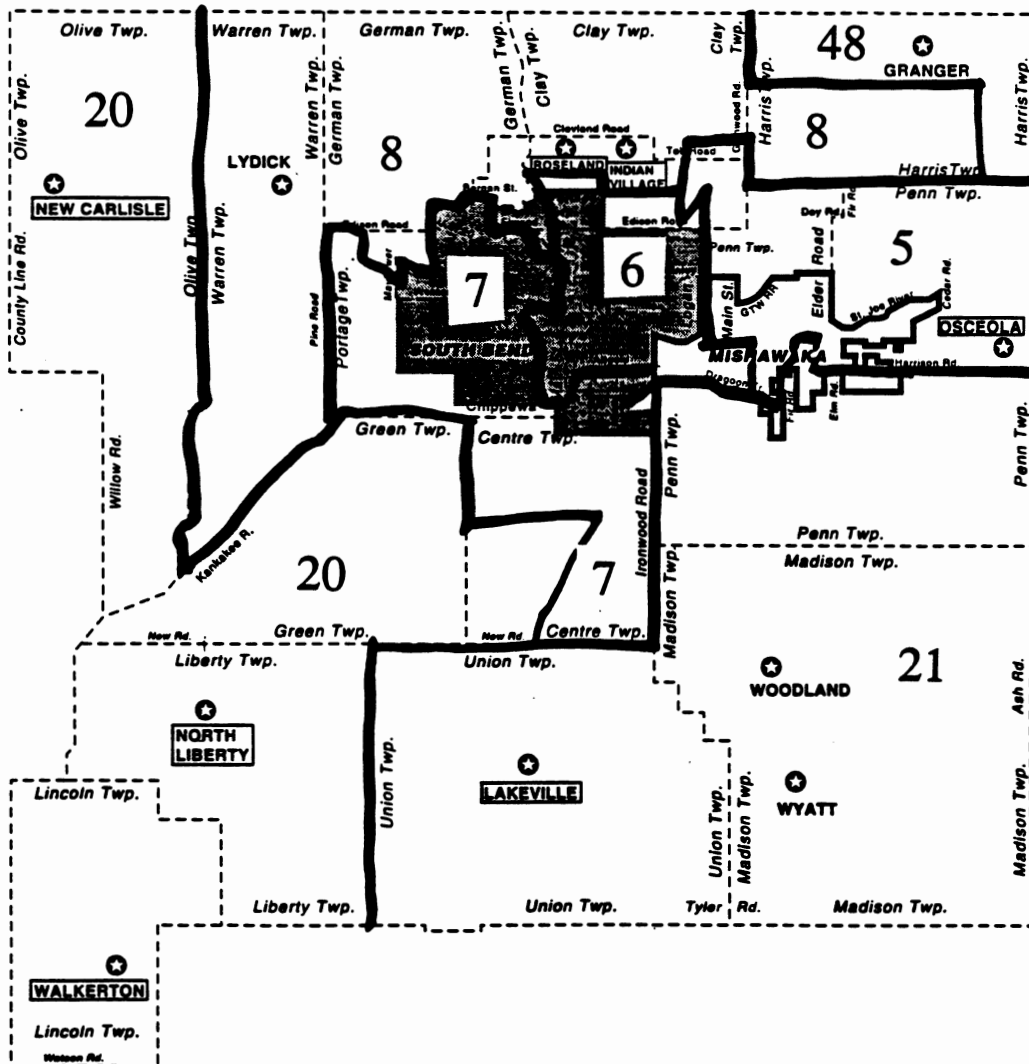
State Representatives

All representatives are elected for two-year terms. The next election is 1996.

District 5	Craig Fry	(D)
District 6	B. Patrick Bauer	(D)
District 7	Thomas S. Kromkowski	(D)
District 8	Michael A. Dvorak	(D)
District 20	Mary Kay Budak	(R)
District 21	Richard W. Mangus	(R)
District 48	Dean Mock	(R)

Information Center, Ph: (317) 232-9600  
 House Message Center, Ph: 1-800-382-9842

Map of State Representative Districts:



County Commissioners

There are three county commissioners elected from separate single-member districts of similar population density. Each commissioner serves for a four-year term.

- |                        |     |     |                   |
|------------------------|-----|-----|-------------------|
| 1. Richard L. Larrison | (D) | '98 | 227 W. Jefferson, |
| 2. Richard D. Jasinski | (D) | '96 | Suite 722         |
| 3. Joseph D. Zappia    | (D) | '96 | South Bend, IN    |
|                        |     |     | Ph:235-9534       |

1st Commissioner District includes Councilmanic Districts A, B, C.  
2nd Commissioner District includes Councilmanic Districts D, E, F.  
3rd Commissioner District includes Councilmanic Districts G, H, I.

County Council

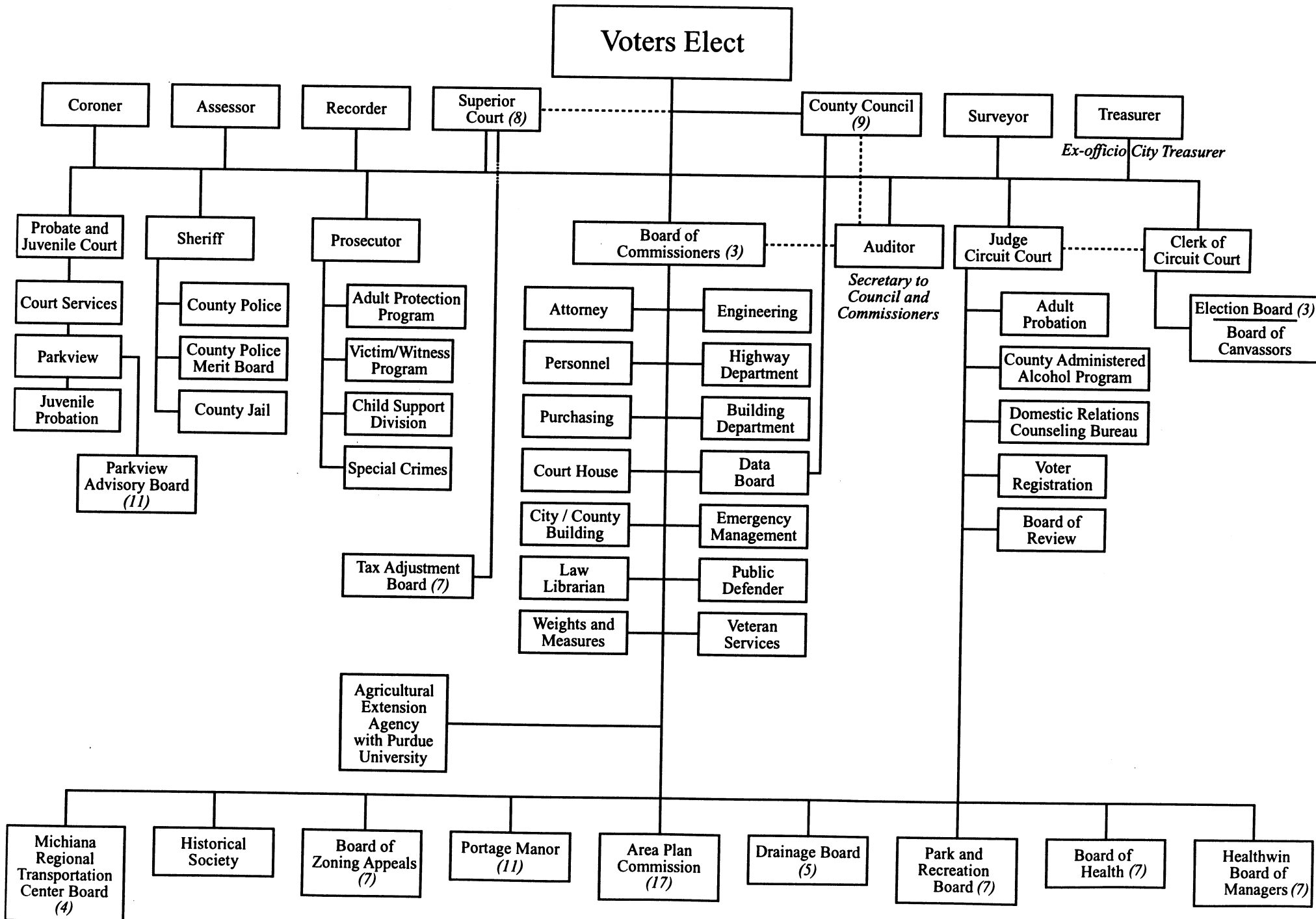
Meetings (open to the public) are held on the second Tuesday of each month at 7:00 p.m. on the 4th floor of the County-City Building.

District A	Jim Reinebold	(R)	'98
District B	Henry Keultjes	(R)	'98
District C	Rafael Morton	(D)	'96
District D	Joseph Baldoni	(D)	'98
District E	Larry Jasinski	(D)	'98
District F	Dennis Schafer	(R)	'96
District G	Gatha Vaughn	(D)	'96
District H	George Nome	(D)	'98
District I	James Reinholtz	(R)	'96

County-City Building  
South Bend, IN 46601  
Ph: 235-9658

ASSESSOR	David Wesolowski	(D)	'98
AUDITOR	Beverly Crone	(D)	(until Jan 1, '96)
	Joseph Nagy	(D)	(auditor-elect)
CLERK	Linda Scopelitis	(D)	'98
RECORDER	Marianne Seach	(D)	'96
SHERIFF	Joseph Speybroeck	(D)	'98
SURVEYOR	John McNamara	(D)	'96
TREASURER	Cynthia Bodle	(D)	'96
CORONER	James McMeel, Jr.	(D)	'96
PROSECUTOR	Michael Barnes	(D)	'98

# Organization of St. Joseph County Government



## **St. Joseph County Government**

### **13 Elected Offices**

1. Board of County Commissioners (3)
2. County Council (9)
3. Assesor
4. Auditor
5. Clerk of the Circuit Court
6. Circuit Court Judge Appoints:
  1. Adult Probation Department
  2. Domestic Relations Counselors Bureau
  3. Court Adminisered Alcholic Program
  4. Voter Registration Board
  5. Board of Review - 2 by Circuit Court plus Auditor, Treasurer and Assesor
7. Coroner
8. Prosecutor Administers:
  1. Victim Witness Program
  2. Adult Protective Services
  3. Child Support Division
  4. Special Crimes Unit
9. Recorder
10. Sheriff Administers:
  1. County Police Department
  2. County Police Merit Board
  3. County Jail
11. Surveyor
12. Judge of Juvenile Court Administers:
  1. Court Services
  2. Parkview Juvenile Center and Advisory Board
  3. Juvenile Probation
13. Treasurer ( serves as Ex-Offico Treasurer of Cities)
14. Superior Court - Judges appointed by Governor and retained by the voters
  1. Appoints Tax Adjustment Board which includes four Freeholders and Representatives from City and County schools.

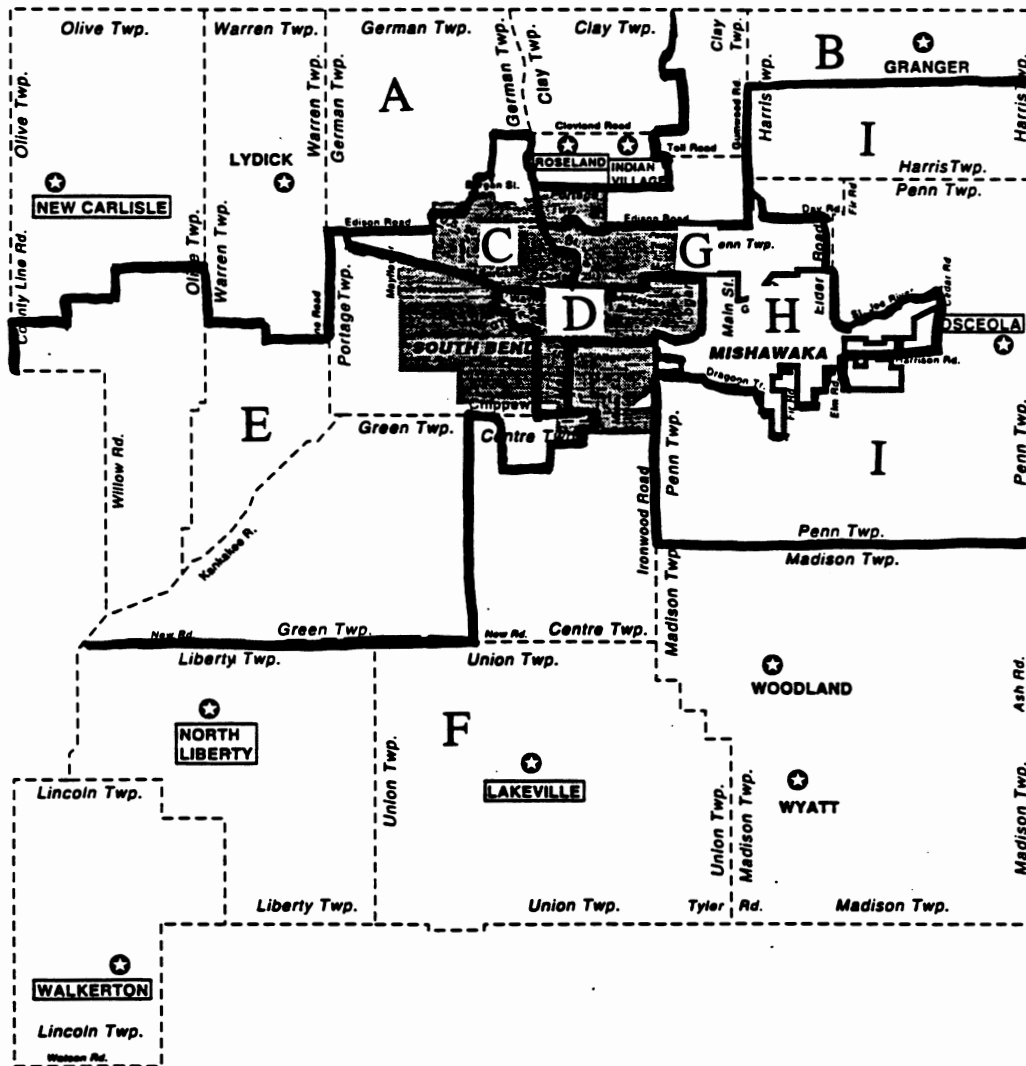
Appointed by County Commissioners:

1. County Attorney
2. County Personnel Office
3. County Engineer
4. County Highway Department
5. Purchasing Department
6. Builders Department ( merged with the City of South Bend)
7. Court House Maintenance
8. County-City Builders Maintenance
9. County Law Library and Library
10. Emergency Management Agency
11. Department of Weights and Measures
12. Public Defender Agency
13. Veterans Services Office
14. Agricultural Extensions Agency
15. Data Board - composed of one commissioner, one member of the County Council and the County Auditor.
16. Area Plan Commission (17)
17. Area Board of Zoning Appeals (7) - Three by the Mayor of South Bend, Two by the Commissioners, and two by Area Plan Commissioners.
18. Michiana Regional Transportation Authority
19. Historical Society
20. Portage Manor and Advisory Board
21. Healthwin Hospital Board of Managers
22. Park and Recreation Department
23. Board of Health (7)
24. County Drainage Board-Surveyor is Ex-Officio

Judges

Circuit Court	Judge Terry A. Crone	235-9551
Juvenile Probate Court	Judge Peter J. Nemeth	235-9644
Magistrate	Roland W. Chamblee, Jr	235-9051
Superior Courts	Judge William H. Albright	235-9542
	Judge George N. Beamer	256-6219
	Judge Sanford Brook	235-9769
	Judge Jerome Frese	235-9563
	Judge William T. Means	235-9727
	Judge Jeanne M. Jordan	235-9550
	Judge William C. Whitman	235-9591

Map of County Commissioner and County Council Districts:



## Public Meetings

All of the following board members (except for the County Commissioners) are appointed officials.

<b>Area Board of Zoning</b>	1st Wednesday of each month 1:30 P.M.	4th floor Council Chambers
-----------------------------	---	-------------------------------

Contact: Kathy Badicks at 235-9553 for more information.

<b>Area Plan Commission</b>	3rd Tuesday of each month 3:30 P.M.	4th Floor Council Chambers
---------------------------------	---	-------------------------------

Contact: Executive Director Richard Johnson at 235-9571 for information.

<b>County Commissioners</b>	Every Tuesday at 10:00 am	4th Floor City-Council Building
-----------------------------	------------------------------	---------------------------------------

Contact: The Commissioners Office at 235-9534 for more information.

<b>Board of Health</b>	3rd Thursday each month noon	8th Floor - City-County Building
------------------------	---------------------------------	-------------------------------------

Contact: Dr. William Carter at 235-9750 for further information.

<b>Housing Authority Board</b>	4th Wednesday each month	501 S. Scott
------------------------------------	-----------------------------	--------------

Contact: Diana Coplen at 235-9346 for information.

<b>County Park &amp; Recreation Board</b>	3rd Tuesday each month	4th Floor City-County Building
---	---------------------------	-----------------------------------

Contact: Delores Faylor at 277-4828 for additional information.

## INCORPORATED AREAS OF ST. JOSEPH COUNTY

### INDIAN VILLAGE

Indian Village is the smallest incorporated town in St. Joseph County. This residential community is nestled into a square mile of land between the University of Notre Dame and the Indiana Toll Road. Cars pass the virtually unnoticed area when traveling on nearby Juniper Road, while Juday Creek flows through the northwest corner of the town.

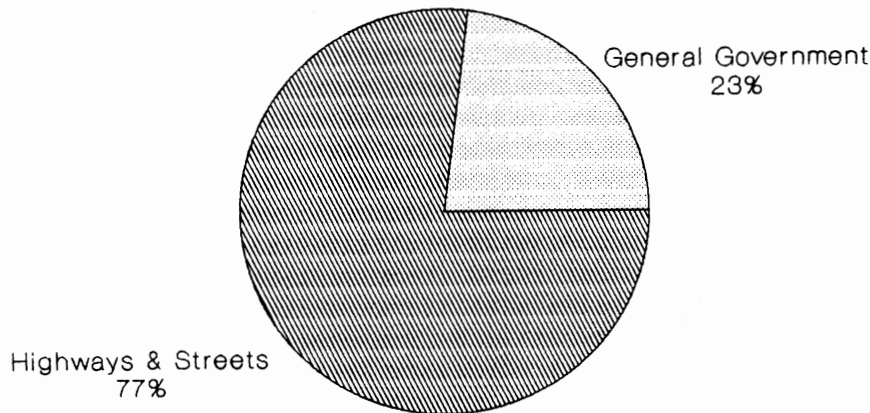
Problems with poor home construction back around 1938 inspired the area's residents to fight for the power to regulate the quality of home building. So, in 1940, the residents voted to incorporate as a town of St. Joseph County, giving themselves such power.

The town is known for its quiet character of a suburban subdivision but with a unique appearance. Its approximately 60 homes stand far apart because of building codes requiring owners to have three adjoining lots. All the streets dead end, and there are no stores nor any traffic signals.

With a population of around 175, the area is not large enough to justify traditional municipal services. But residents find enough small-town friendliness to justify Indian Village as a quaint place to call home.

Town Board President: Suzette Jozwiak  
Clerk/Treasurer: Catherine Schosker 272-5593

#### *1994 Town Expenditures (% of budget)*





## LAKEVILLE

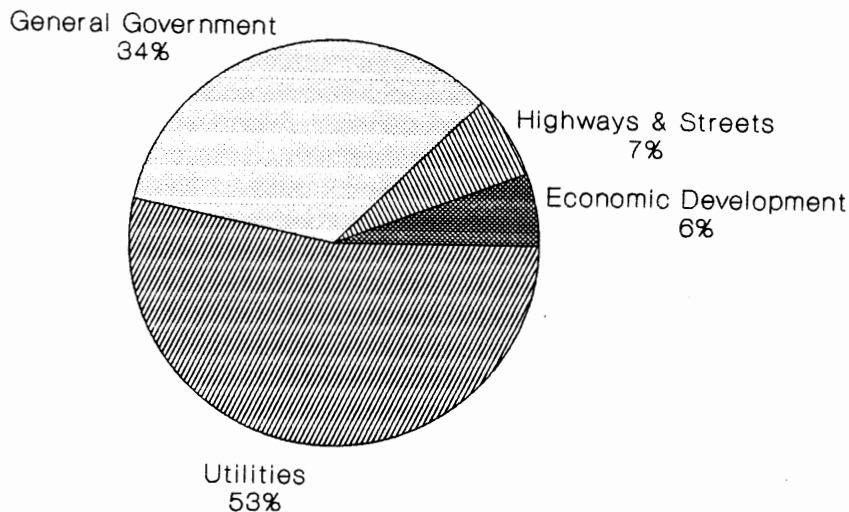
Lakeville is a bustling small town located on U.S. 31 in the southern part of St. Joseph County. A busy commercial strip in downtown Lakeville includes a bank, funeral home, fire station, and several retail establishments. Light industry and a new community center round out the community. The community center is located in a renovated school and houses a medical clinic and offices, in addition to the Lakeville branch of the St. Joseph County Library.

The population of Lakeville is 655, and the community is served by the Union-North United School Corporation.

Town Board President: Robin Bean  
Clerk/Treasurer: Martha Tyler

Lakeville Town Hall  
118 South Michigan  
P.O. Box 137  
Lakeville, IN 46536  
Ph: 784-8311

*1994 Town Expenditures(% of budget)*  
*Total Disbursements - \$ 259,959*



## NEW CARLISLE

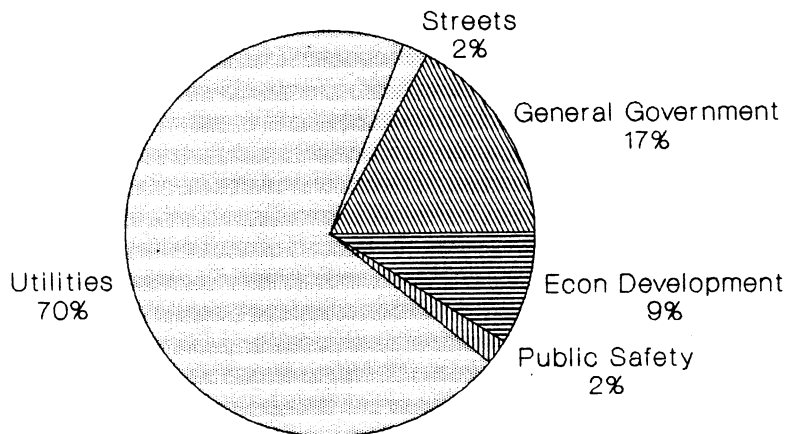
Nestled in the northwest corner of St. Joseph County is New Carlisle, population 1,446. The streets of this small town are lined with lovely old homes owned by families that have lived there for generations. New Carlisle is home to farmers, lawyers, antique dealers, and artists. It is also served by the New Prairie United School Corporation.

With the nearby high-tech I/N Tek and I/N Kote steel manufacturing and coating facilities, which represent the largest Japanese joint venture in the U.S., New Carlisle has much to offer. Restaurants featuring home cooked meals and quaint shops are a New Carlisle hallmark; Winnie Watson-Sweet's Limited Edition Collectibles Store draws people from all over the world. With its history, heritage, charm, and current economic development activities, new residents are finding New Carlisle a most hospitable place.

New Carlisle Town Board President: David Swope  
Clerk/Treasurer: Wanda Wilhelm

New Carlisle Town Hall  
113 South Arch Street  
New Carlisle, IN 46552  
Ph: 654-3733

*1995 Town Budget (% of budget)*  
*Total Disbursements - \$9,377,137*



## NORTH LIBERTY

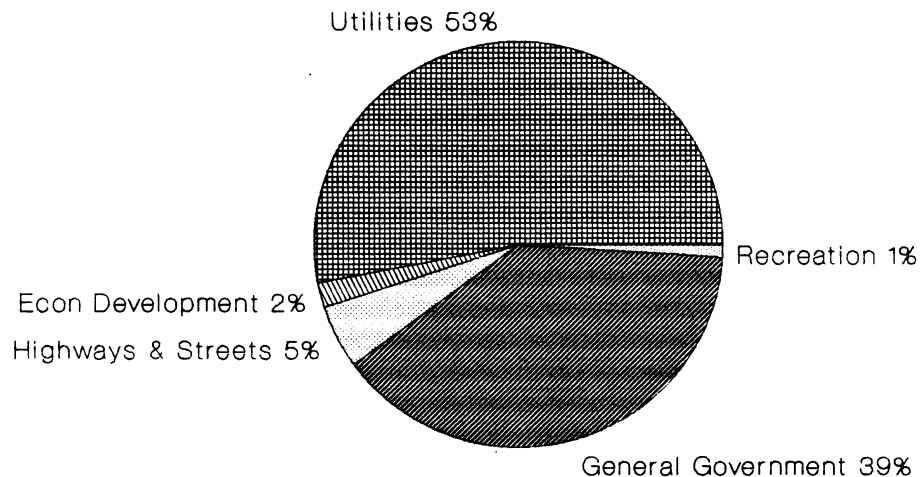
North Liberty is a small town located in southwestern St. Joseph County at the junction of State Road 23 and State Road 4 near the Potato Creek State Park. This growing and progressive community of 1,366 residents provides numerous services and its many civic organizations contribute to the positive quality of life for its residents.

North Liberty students attend schools in the John Glenn School Corporation. The town's leading industry is Wells Aluminum, a manufacturer of aluminum extrusions. A new industrial park has recently been developed.

Town Board President: Richard J. Warner  
Clerk/Treasurer: Paul Williams, Jr.

North Liberty Town Hall  
118 North Main Street  
P.O. Box 515  
North Liberty, IN 46554  
Ph: 656-4447  
Fax: 656-4447

*1994 Town Expenditures(% of budget)*  
*Total Disbursements - \$766,600*



## OSCEOLA

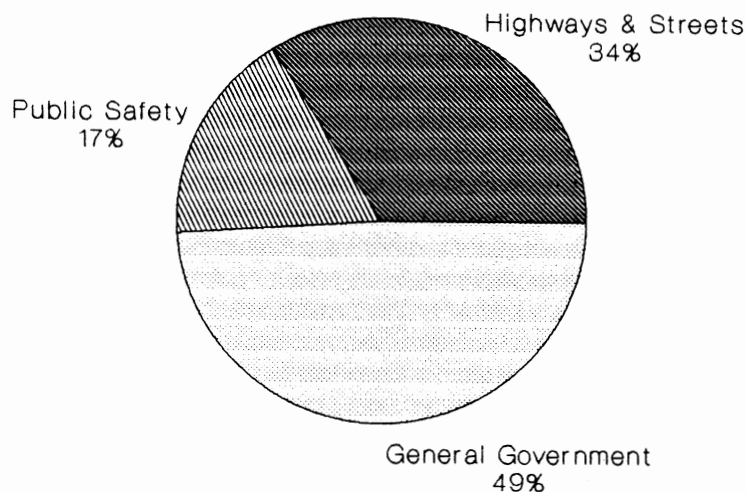
Located in the eastern part of St. Joseph County between the cities of Mishawaka and Elkhart on U.S. 33, the town of Osceola was originally called Bancroft's Mill. However, in 1937 the town was renamed Osceola to honor the great Seminole Indian chief.

The population of Osceola is 1,999, which is up five percent from the 1980 census. The town boasts a variety of businesses, residents enjoy visiting Ferrettie-Baugo Creek County Park, one of the area's most beautiful and widely used recreation areas.

Town Board President: Robert Mark  
Clerk/Treasurer: Donna Reinholtz

Osceola Town Hall  
850 Lincolnway West  
Osceola, IN 46561  
Ph: 674-8114

*1995 Town Appropriation (% of budget) - \$315,341*



## ROSELAND

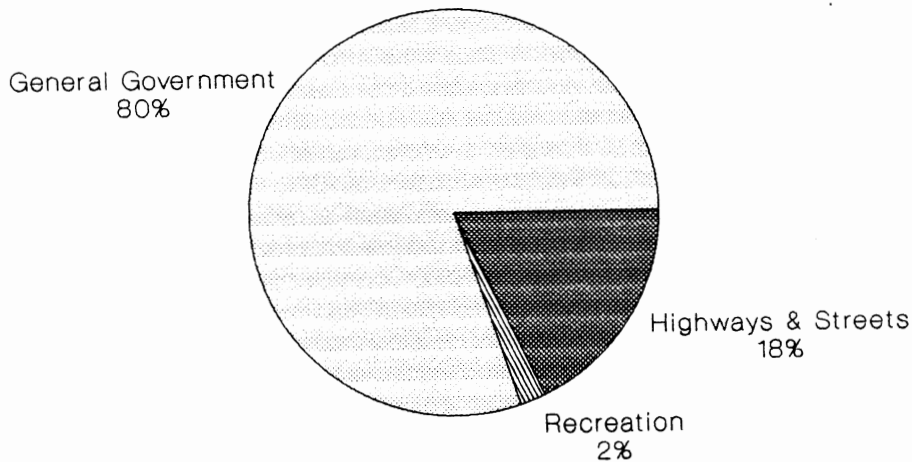
The town of Roseland might best be described as "small but mighty." Encompassing only 4.5 square miles with a population of 706, Roseland is strategically located north of the Indiana Toll Road and adjacent to the University of Notre Dame and St. Mary's College.

It has a busy commercial strip primarily comprised of motels and restaurants. Roseland Park offers family recreational activities and is the site for many civic group activities.

Roseland Town Board President: Charles Landesman  
Clerk/Treasurer: Gladys Riffel

Roseland Town Hall  
200 Independence Road  
Roseland, IN 46637  
Ph: 272-6485

*1994 Town Budget (% of budget)*  
*Total Disbursements - \$267,390*



## WALKERTON

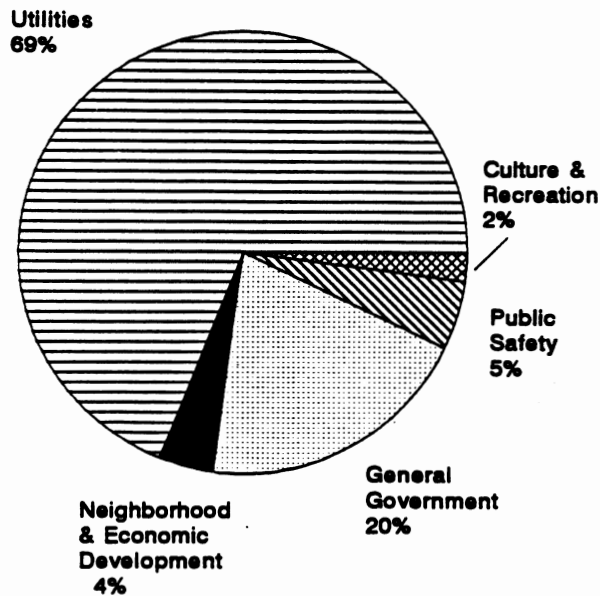
Offering opportunities for working and living in a gracious small town setting, Walkerton is uniquely located where four counties meet. Its central position and its ready access to many cities around it provide distinct industrial and commercial advantages in a pleasant rural setting.

Although noted for its small town look with 2,061 residents, Walkerton is definitely a community on the move. The town is expanding its industrial park area and currently is home to 26 industries. A recently published retail and service directory shows that Walkerton has over 120 stores and firms serving the local area. Over 30 of these businesses are in downtown Walkerton where a recent state grant added new improvements to show off the historic 100-year-old buildings. Walkerton is close to many lakes and recreational facilities and is served by the John Glenn School Corporation.

Town Board President: Cheryl Rizek  
Clerk/Treasurer: Judith Hiler

Walkerton Town Hall  
510 Roosevelt Road  
Walkerton, IN 46574  
Ph: 586-3711

*1992 Town Expenditures (% of budget)*  
*1994 Not Provided*



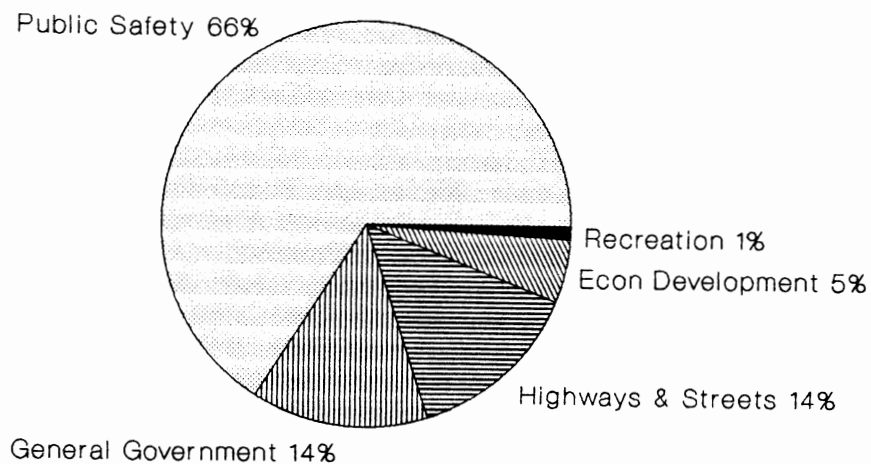
## SOUTH BEND

In 1842, Father Edward Sorin, a French priest, named his rustic log chapel "Notre Dame du Lac" and began teaching the local Indians. Today, that chapel has grown into the University of Notre Dame, one of the most respected institutions of higher education in the world.

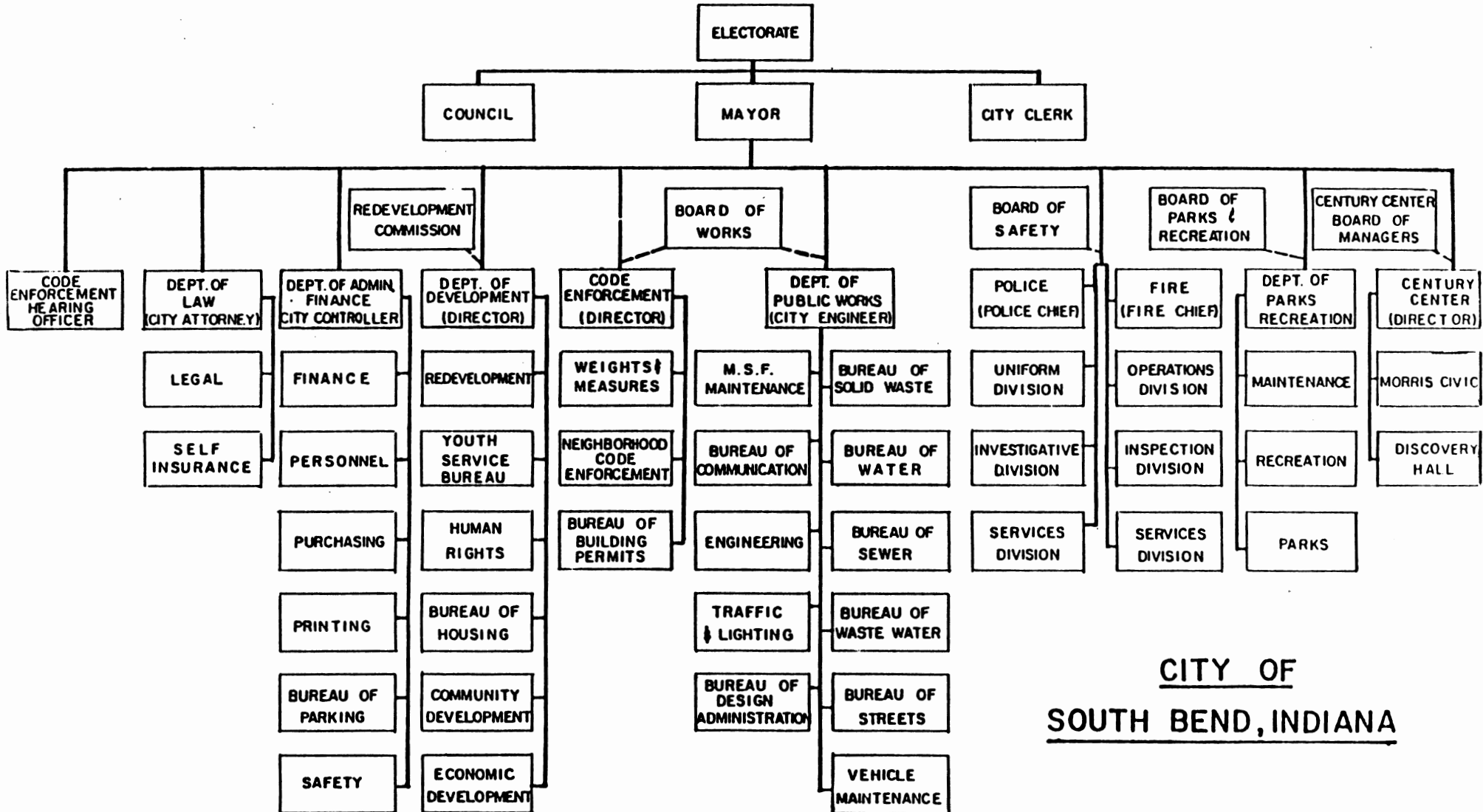
The industry that really gained notoriety for the area was a factory started by H. C. Studebaker in 1852. From the first wagons and horse drawn buggies to the last standard production automobile produced in 1963, the name Studebaker was synonymous with the area.

Another industrial firm, that would later become the area's largest, entered the scene in 1923 when Vincent Bendix began manufacturing automobile brakes. In 1929, the company became the Bendix Aviation Corporation, and now as Allied-Signal, Inc., is a leading manufacturer of Bendix automotive and aerospace products. Combined, the five area divisions comprise the largest manufacturing firm in St. Joseph County with 2,300 employees.

*1994 City Expenditures (% of budget)*  
*Total Expenditures - \$33,838,791*



# ORGANIZATION CHART



CITY OF  
SOUTH BEND, INDIANA



Elected Officials

Mayor Joseph E. Kernan Ph: 235-9261  
Clerk Irene Gammon Ph: 235-9221

County-City Building  
South Bend, IN 46601

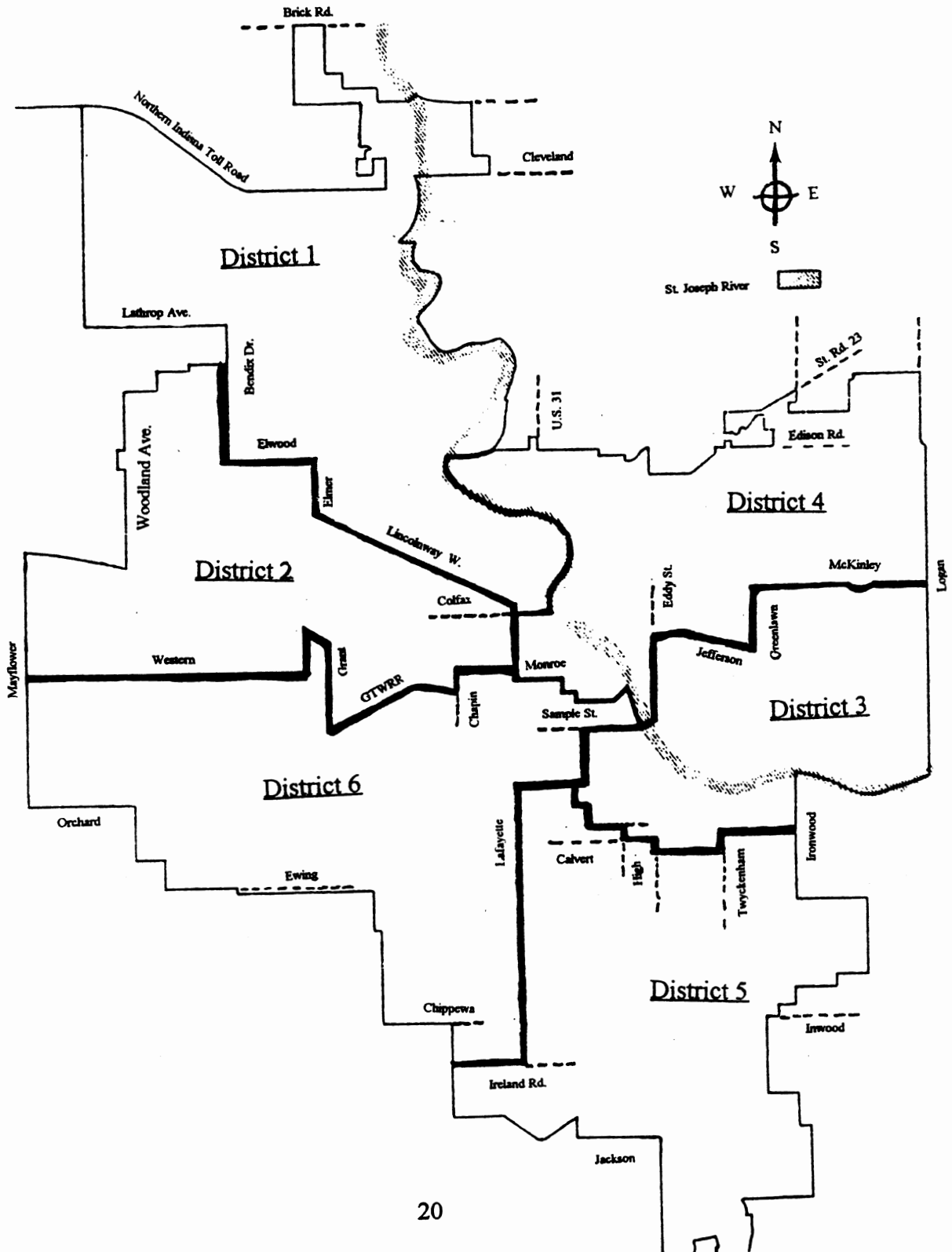
Common Council

Meetings (open to public) are held the 2nd and 4th Monday of each month at 7:00 p.m. on the 4th floor of the County-City Building (Chamber Room). Contact Council President Steve Luecke for any additional information.

District 1	Stephen Luecke	(D)	'95
District 2	Cleo Washington	(D)	'95
District 3	Roland Kelly	(D)	'95
District 4	Ann B. Puzzello	(D)	'95
District 5	Linas K. Slaviskas	(R)	'95
District 6	Thomas Zakrzewski	(D)	'95
At-Large	Sean Coleman	(D)	'95
At-Large	Loretta J. Duda	(D)	'95
At-Large	Eugene Ladewski	(D)	'95

County-City Building  
South Bend, IN 46601  
Ph: 235-9321

# South Bend City Councilmanic Districts



Appointed Officials County-City Building South Bend, IN 46601

Attorney	Richard Nussbaum	235-9241
Assistant to Mayor	Jack Reed	235-9261
Admin. Asst. for Neighborhoods	Jim Caldwell	235-9261
Controller	Kevin Horton	235-9742
Personnel Coordinator	Catherine A. Hubbard	235-9482
Board of Public Works	John E. Leszczynski	235-9251
Economic Development	Jon R. Hunt	235-9371
Building Commissioner	Donald Fozo	235-9554
Fire Chief	Luther Taylor	235-9255
Police Chief	Ronald Marciniak	235-9311
Transportation Director and Street Commissioner 701 West Sample Street South Bend, IN 46625	Sam Hensley	235-9244
Director of Water Works 224 North Main Street South Bend, IN 46625	John F. Stancati	235-9322
Environmental Services Director 3113 Riverside Drive South Bend, IN 46615	John J. Dillon	277-8515
Superintendent of Parks & Recreation 301 South St. Louis Boulevard South Bend, IN 46617	Phil St. Clair	235-9401

Public Meetings

All of the following board members are appointed officials.

**Board of Public Works**      Every Monday-9:30am      Room1308,  
City-County Building

Contact: Sandra Parmerlee at 235-9412 for additional information.

**Board of Public Safety**      Every 3 Weeks-9:00am      Room 1308,  
City-County  
Building

Contact: Sandra Parmerlee at 235-9412 for exact schedule.

**Park Board**      3rd Monday  
each month      301 S. St. Louis  
(Howard Park  
Office)

Contact: Angie Nitka at 235-9401 for further information.

**Water Works Board**      1st & 3rd Tuesday  
each month-3:30      13th Floor, City  
County Building

Contact: Linda Stickler at 235-9322 for information.

**Board of Zoning Appeals  
of City of South Bend**      3rd Thursday  
each month-3:30pm      4th Floor  
City-County  
Building

Contact: Kathy Bodicks at 235-9553 for more information.

**Human Rights  
Commission**      3rd Wednesday  
each month-5:30 P.M.      4th Floor City  
County Building

Contact: Executive Director Lonnie Douglas at 235-9355 for further information.

**Redevelopment  
Commission**      1st & 3rd Fridays each  
month10:00 am      Room 1308,  
City-County  
Building

Contact: Ann Kolata at 235-9335 for additional information.

**Economic Development Commission**      3rd Friday  
each month-11:30 am      Board of Board  
Public Works  
Room

Contact: Kate McCahill at 235-9335 for schedule information.

**Recreation Board**      2nd Tuesday each month  
8:00 am      Newman Center

Contact: Contact Tom Schalliol at 235-9328 for additional information.

**Housing Authority of the City of South Bend**      4th Wednesday every  
month - 5:30pm      501 S.Scott

Contact: Dianna Coplen or Executive Director Alonzo Watson at 235-9346.

**Public Transportation Corporation Board**      3rd Monday each  
month-4:00pm      901 East  
Northside

Contact: Tilda Crowell at 233-2131 for more information.

**Area Plan Commission (covers St. Joseph County & South Bend)**      3rd Tuesday each month  
each month 3:30 p.m.      4th Floor  
City - County  
Building

Contact: Executive Director Richard Johnson at 235-9571 for more information.

**Code Enforcement (Hearings)**      Every Monday & Thursday  
each week-1:30 P.M.      13th Floor  
City-County  
Building

Contact: Kathy Dempsey at 235-9325 for additional information.

**Related Agency**

**Michiana Area Council of Governments (MACOG)**

Executive Director, Charles W. Minkler

1120 County-City Building  
South Bend, IN 46601  
Ph: 287-1829

MACOG is one of eleven regional councils of government in Indiana. Two common services are provided by the regional council. First are transportation programs such as mass transit planning, traffic safety, or elderly/handicapped transportation. Second, technical assistance is provided in areas such as state census data, capital improvement/operating budgets or zoning assistance.

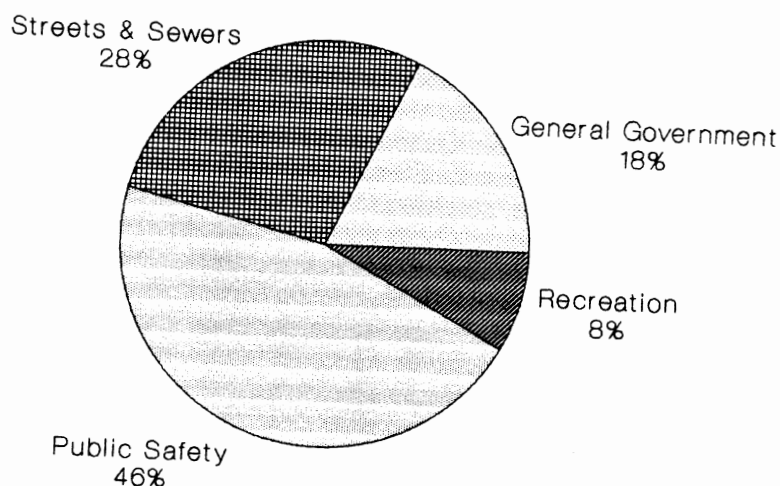
## MISHAWAKA

Mishawaka, the Princess City, lies nestled along the meandering path of the St. Joseph River. The city is named after Princess Mishawaka, daughter of Shawnee Chief Elkhart.

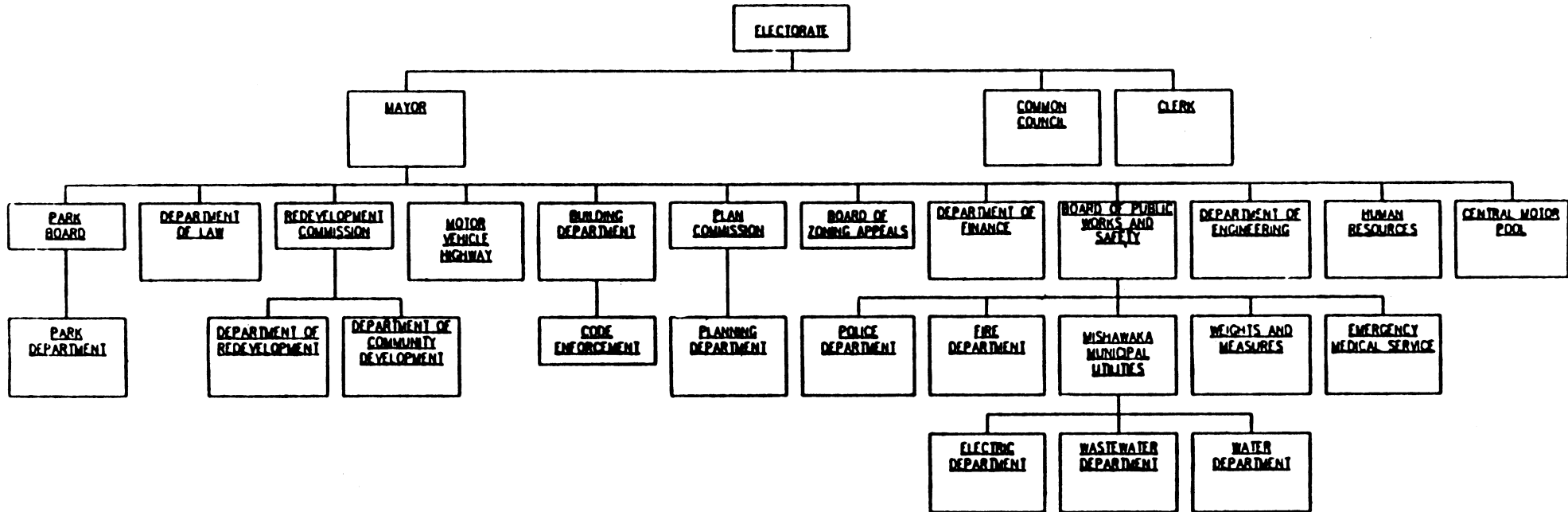
The town originated from a community called St. Joseph Iron Works, which was incorporated in 1833 with a population of 862. This small village united with several other nearby communities in 1838 to officially become Mishawaka.

Mishawaka's colorful past and rich ethnic heritage provided the perfect foundation for the thriving city that is Mishawaka today. This prosperous community serves as the retail hub for the Michiana region, and is home to the suburban Edison Lakes Professional Office Park. The 300-acre development features commercial and office/professional buildings intermingled with The Village at Edison Lakes (retail shops) and The Forest at Edison Lakes (residential area). National Steel Corporation, the nation's fifth largest steel company, recently moved into its new 125,000 square foot corporate headquarters building, completing its relocation from Pittsburgh, Pennsylvania to Edison Lakes.

*1994 Civil City Budget (% of budget)*  
*Total Civil City Expenditures - \$ 26,521,123*



**CITY OF MISHAWAKA  
ORGANIZATIONAL CHART**





Elected Officials

Mayor            Robert C. Beutter            Ph: 258-1601  
Clerk            Deborah Ladyga-Block        Ph: 258-1616  
                  City Hall  
                  600 East 3rd Street  
                  Mishawaka, IN 46544

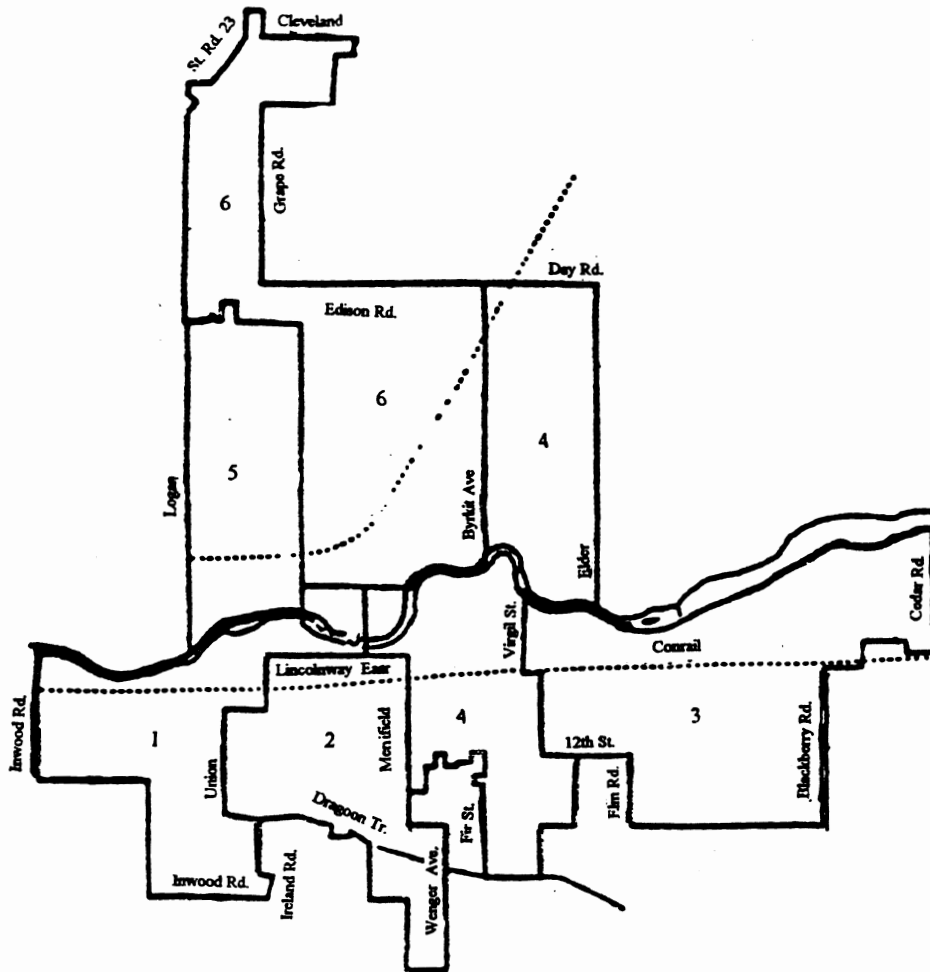
Common Council

Meetings (open to the public) are held on the 1st and 3rd Mondays of each month at 7:00 p.m. in the Council Chambers (600 East 3rd Street, Mishawaka). Contact John Gleissner for further information.

District 1	Triphon Lema, Jr.	(D)	'95
District 2	Randy J. Squadroni	(D)	'95
District 3	William D. Pemberton	(R)	'95
District 4	Dorothy L. Wayne	(D)	'95
District 5	James E. Benjamin	(D)	'95
District 6	Jerome M. DeDapper	(D)	'95
At-Large	Charles J. Trippel	(D)	'95
At-Large	John Gleissner	(D)	'95

City Clerk's Office  
City Hall  
Mishawaka, IN 46544  
Ph: 258-1616

# Mishawaka City Councilmanic Districts



Appointed Officials

Attorney	John P. Gourley	255-1155
Admin. Asst. to Mayor	Marilyn Shroyer	258-1601
Controller	Edwina Kintner	258-1622
Director of Human Resource	Bonnie Bailey	258-1615
Engineer	Gary West	258-1619
Fire Chief	Ronald Watson	258-1673
City Planner	J. Christopher Huff	258-1625
Bldg. Commissioner	Leon Maenhout	258-1607

City Hall  
600 East 3rd Street  
Mishawaka, IN 46544  
Ph: 258-1601

Utilities General Manager 126 North Church Street Mishawaka, IN 46544	Philip Miller	258-1635
---	---------------	----------

Police Chief 120 South Church Street Mishawaka, IN 46544	George Obren	258-1683
--	--------------	----------

Redevelopment Director 600 East 3rd Street Mishawaka, IN 46544	Leonard Gherardi	258-1609
--	------------------	----------

Superintendent of Parks & Recreation 500 North Cedar Street Mishawaka, IN 46545	Richard Fox	258-1664
--	-------------	----------

Public Meetings

The following board members are appointed officials.

<b>Board of Public Works</b>	Every Tuesday at 10:00 am	2nd Floor City Hall
------------------------------	------------------------------	------------------------

Contact: President Philip Miller at 258-1635 for more information.

<b>Housing Authority Board of Commissioners</b>	4th Tuesday each month 7:30 P.M.	Various Locations Posted
---	--	--------------------------------

Contact: Kathy St. John at 258-1656 for additional information.

<b>City Plan Commission</b>	2nd & 4th Tuesday each month-7:00 P.M.	Mishawaka City Council Chambers
---------------------------------	---	------------------------------------

Contact: Peggy Strantz at 258-1625 for more information.

<b>Parks &amp; Recreation Board</b>	2nd Monday each month each month-7:00 P.M.	Battell Center
---	---	----------------

Contact: Mary Ann Velleman at 258-1664 for information.

<b>Redevelopment Commission</b>	4th Monday each month 6:30 P.M.	City Hall Public Works Room
-------------------------------------	------------------------------------	--------------------------------

Contact: Director Len Gherardi at 258-1609 for more information.

<b>Board of Zoning Appeals</b>	2nd Tuesday each month 6:00 or 6:30 P.M.	City Hall
------------------------------------	---	-----------

Contact: Peggy Strantz at 258-1625 for more information.

<b>Code Enforcement (Hearings)</b>	3rd Tuesday each month 1:30 P.M.	City Hall
--	-------------------------------------	-----------

Contact: Contact Bob Hesch at 258-1612 for information.

## **St. Joseph County Culture and Recreation**

The following is a sample of opportunities in the county. The list is not intended to be comprehensive.

### **1. College Football Hall of Fame**

120 South St. Joseph St.  
South Bend, IN 46601  
(219) 235-9711

The hall is a sports shrine and museum dedicated to the preservation of the tradition that is college football. It is administered by the National Football Foundation, and has been in existence since 1951. The 58,000 square-foot, \$14 million facility promises to become one of the premiere sports shrines in existence. The hall is expected to be open in the summer of 1995.

### **2. Copshaholm Museum**

808 West Washington  
South Bend, IN 46601  
(219) 235-9664

Copshaholm, built in 1896-98, was the home of James D. Oliver, president of the family's Oliver Chilled Plow Works. It has 38 rooms on 3 floors with 14 fireplaces and the family's original furnishings from the 17th through the 20th centuries. Beautiful gardens surround the house on 2.5 acres which appear on the National Register of Historic Places, along with the house.

### **3. Hannah Lindahl Children's Museum**

1402 South Main St.  
Mishawaka, IN 46544  
(219) 258-3056

For children of all ages, this hands on museum provides a view of the natural and cultural history of the area from pre-historic to present day. The museum houses the Survive Alive House, which is used by Mishawaka fire fighters to teach fire safety.

4. Morris Civic Auditorium  
211 North Michigan  
South Bend, IN 46601  
(219) 235-9198

Open in 1922 and the oldest historic theater in Indiana, the Morris Civic Auditorium is home to the South Bend Symphony and Broadway Theater League, a company that sponsors national touring companies of top Broadway productions, as well as other concerts and performances year round.

5. Northern Indiana Center for History  
808 West Washington  
South Bend, IN 46601  
(219) 235-9664

The Center is located on ten acres in the West Washington Historic District, and includes Copshaholm, the historic Oliver Gardens, the Leighton Gallery and Carriage House, the History Center and the Worker's Home Museum.

The new History Center's galleries tell the story of the St. Joseph River Valley from the prehistoric era to the present in its permanent gallery, The Voyages Gallery.

6. Pierre Navarre Cabin  
Leeper Park  
South Bend, IN 46615  
(219) 235-9800

Built in 1820 by one of the area's first settlers and his Potawatomi wife, this log cabin is open to the public and is the site for Cabin Days, an historical re-enactment held each May.

7. Potawatomi Park and Zoo  
500 South Greenlawn  
South Bend, IN 46615  
(219) 235-9800

The Zoo is home to over 400 mammals, reptiles and fish from Africa, Eurasia, Australia, and North and South America. The zoo sponsors events throughout the year including ZooBoo!, Jazzoo, and Zooltide.

8. **South Bend Regional Museum of Art**  
120 South St. Joseph Street  
South Bend, IN 46601  
(219) 235-9102

Located in the Century Center, this facility houses a permanent collection in addition to current displays and a museum gift shop. A variety of classes for children and adults are offered and are taught by local artists.

9. **Snite Museum of Art**  
Notre Dame Campus  
Notre Dame, IN 46556  
(219) 631-5466

Located on the University of Notre Dame campus, the Museum's permanent collection of 19,000 pieces includes works by Rembrandt, Boucher, Remington, Chagall and Mestrovic.

Please call the Michiana Arts and Sciences Council for further information on cultural assets within St. Joseph County.

**Please Contact:**  
Karen Schirmer, Executive Director  
(219) 235-9160

## **BUSINESS and LABOR**

The business climate offered by St. Joseph County provides excellent opportunities for many types of organizations. The area provides the necessary resources and support services to more than adequately satisfy operational requirements, while the low cost of taxes, energy, and wages contribute to profit.

St. Joseph County is extremely diversified in both its population and its economy. Residents from many ethnic backgrounds add to the flavor of life here, as do many types of businesses. Approximately 135,000 people make up a diverse local work force.

Nearly 20,100 men and women work in approximately 495 manufacturing plants in the county. The employees of these and other plants make a wide variety of automotive, aviation, industrial, electrical, and garden/lawn equipment, as well as machine tools, medical instruments, and many other products.

St. Joseph County is also the home of 97,300 non-manufacturing jobs in the areas of construction, finance, government, services, trade, and transportation.

The facilities and attractions within St. Joseph County have made tourism and conventions a \$239-million-a-year industry. The county currently ranks second in tourism in the state of Indiana.

In the past few years, with the development of the "Grape Road Corridor" in Mishawaka, the northeast segment of the county has become a major retail trade center. South Bend's ten-county Michiana ADI (Area of Dominant Influence) is one of the nation's top retail markets, while in the state of Indiana, South Bend ranks second only to Indianapolis.

Fine retail outlets are located throughout the county: nearly 1,463 establishments employ almost 24,000 workers, and account for over \$2.2 billion in annual sales.

**There is a 3.4% state income tax.**

**There is a 5% sales tax on retail sales.**

**There is a 0.1% County Economic Development  
Income Tax effective July 1, 1995.**

**The rate increases to 0.2% on July 1, 1997.**

### **Income and Employment**

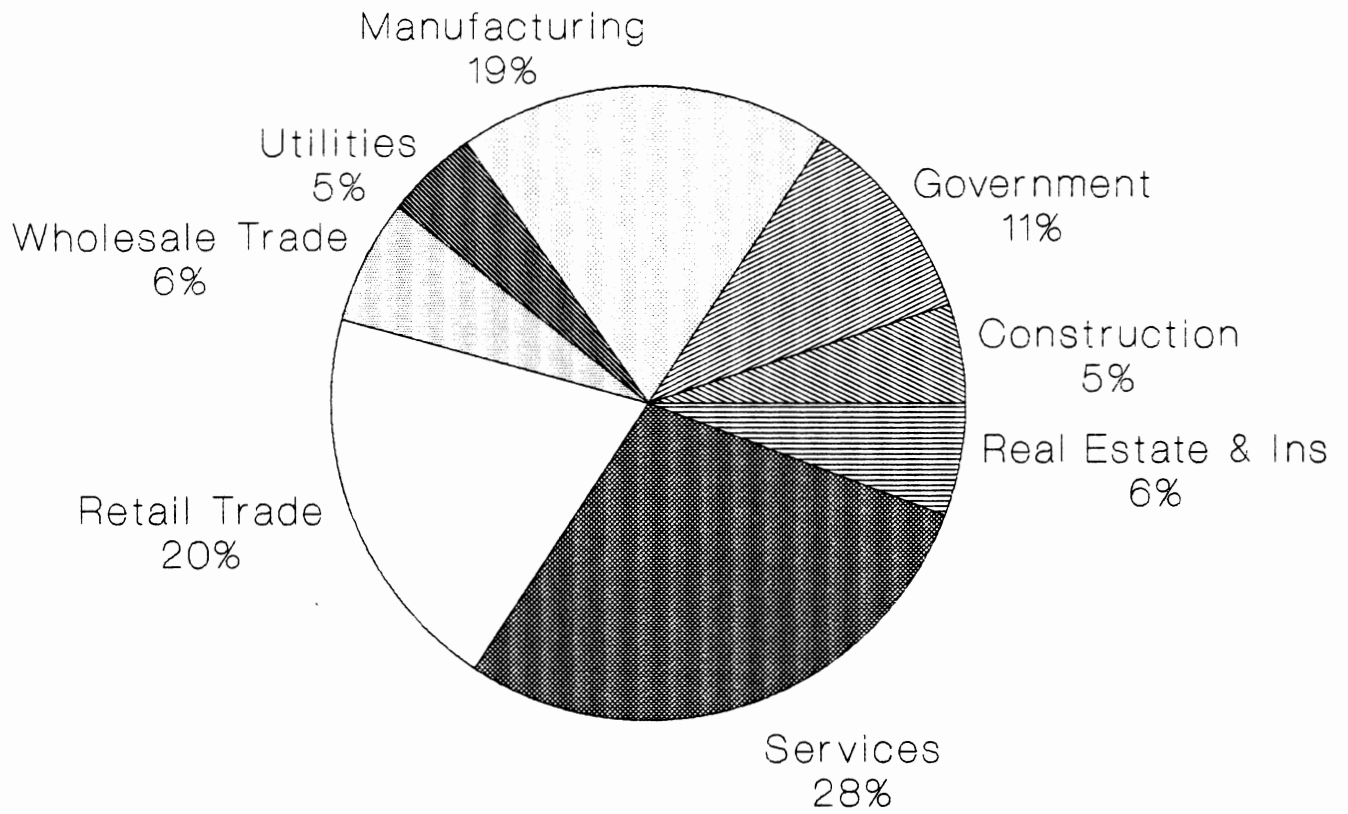
With a median household income of \$28,235, St. Joseph County ranked 36th in the state, compared to a 1979 rank of 27th. There was real decline of \$1,212 in median household income between 1979 and 1989 (adjusted for inflation). St. Joseph County ranked 25th in 1989 with a median family income of \$34,206, compared to a 1979 rank of 20th. There was real decline of \$367 in median family income between 1979 and 1989 (adjusted for inflation).



## 25 LARGEST EMPLOYERS

University of Notre Dame	3,700
South Bend Community School Corp.	2,968
Memorial Health Systems	2,500
Saint Joseph's Care Group	2,364
Allied-Signal Inc.	2,284
Indiana University of South Bend	1,362
City of South Bend	1,339
AM General Corporation	1,192
St. Joseph County	980
Penn-Harris-Madison School Corporation	840
Associates Bancorp	700
Dodge/Reliance	650
Meijer/Grape Road	650
U.S. Postal Service	630
1st Source Bank	626
School City of Mishawaka	626
St. Joseph Mishawaka Health Services	606
I/N Tek-I/N Kote	605
Meijer/Portage Road	590
City of Mishawaka	550
EWI Inc. South Bend Stamping	520
South Bend Medical Foundation	500
St. Mary's College	490
Madison Center and Hospital	465
Michiana Community Hospital	450

## Industrial Profile of St. Joseph County



### 1989 Employment

Type	Number	% change 1985-89
Ag Services	842	31.4
Mining	51	-12.1
Construction	7,704	36.5
Manufacturing	23,260	-6.7
Transportation	5,958	16.9
Wholesale Trade	7,814	14.9
Retail Trade	26,575	13.9
Finance, Insurance, Real Estate	9,172	18.8
Services	42,548	18.4
Government	12,981	7.8

*Source: Indiana Factbook, 1992*

### Household Income Levels, St. Joseph Co.

Income Levels	% of Households
Less than \$25,000	44
\$25,000 to \$49,999	36
\$50,000 to \$74,999	13
\$75,00 and higher	6

*Source: Status of Indiana Families, Purdue Univ. Cooperative Extension Service*

## HOUSING

In 1994, the median price for a single family, three-bedroom home in St. Joseph County was far below the national figure--approximately \$62,9000. The cost of a newly built 1,800-square foot, three-bedroom home with attached garage in an attractive neighborhood is priced at about \$97,350. Almost 72 percent of the homes in St. Joseph County are owned by residents. Even those executives who commute to Chicago have learned that the 90-minute train ride is well worth the trade off in terms of value and quality living. St. Joseph County's homes sell for about 50 percent of comparable ones in the suburbs of Chicago.

For those preferring the carefree lifestyle of an apartment or condominium, there are plenty to choose from and more being built all the time. Choose from settings along the St. Joseph River in downtown South Bend or close to the Grape Road retail center in Mishawaka. The average monthly apartment rental fee for a two-bedroom, two-bath unit is \$551 per month. Apartments in the area can range from a one-bedroom unit for \$295 per month to a three-bedroom, two-and-a-half bath unit with a family room for \$955.

### Population and Housing

Based on the 1990 Census, St. Joseph County ranks 4th in population among Indiana's ninety-two counties. The median age in 1990 was 31.1 years of age. There are 92,365 households in St. Joseph County, with an average household size of 2.5 people.

Between 1950 and 1960, the population of St. Joseph County grew by 16.4%. As shown below, growth has slowed since then.

	1960	1970	1980	1990
Population	238,614	244,827	241,617	247,052
% change	NA	+2.6	-1.3	+2.2

Source: Indiana Factbook, 1992

## COST OF LIVING INDEX

		GROCERY				HEALTH	MISC. GOODS &
CITY	COMPOSITE	ITEMS	HOUSING	UTILITIES	TRANSPORTATION	CARE	SERVICES
Boston, MA	135.6	118.6	163.4	180	125.9	153	108.4
Los Angeles, CA	125.2	106.7	158.2	90	108.5	132.5	118.5
Chicago, IL	121.6	110.3	147	108.7	107.9	124.6	112.2
Pittsburgh, PA	113.3	101.2	107.3	158.2	114.9	104	111.9
Denver, CO	107.8	99.6	123.5	92.3	105.5	124.9	100.4
Minneapolis/St. Paul, MN	105.8	103.7	99.4	90	121.8	124.7	108.4
Cleveland, OH	105.2	101.5	109.6	123.9	111.8	102.9	96.8
Cincinnati, OH	103.8	95.7	105.8	109.3	104.3	97.8	104.6
Phoenix/Mesa, AZ	102.5	101.9	90.3	102.9	120.3	116.4	105.2
Atlanta, GA	100.6	103.5	100.8	110.8	101.1	109.7	95.2
Houston, TX	98.8	100.9	91.4	100.7	113	110.6	97.7
Indianapolis, IN	97.8	98.3	91.8	105.7	100.8	94.9	100.3
St. Louis, MO-IL	97	98.9	98.1	109.7	91	102.3	93
South Bend, IN	92.7	92.5	89.6	111.2	87.2	88.3	92.6
U.S. Average = 100							

## HOUSING VALUES

Median home prices in the second quarters of 1993 and 1994 for metropolitan areas.		
	1994	1993
San Francisco	\$255,900	\$256,400
Los Angeles	\$188,100	\$202,300
Boston	\$181,300	\$175,600
New York	\$174,600	\$159,100
Washington D.C.	\$159,100	\$159,100
Chicago	\$146,300	\$139,700
Baltimore	\$118,100	\$113,300
Denver	\$114,800	\$104,700
Milwaukee	\$110,400	\$103,700
Miami	\$102,000	\$ 99,000
Minneapolis/St. Paul	\$101,000	\$ 99,600
Dallas	\$ 96,300	\$ 99,800
Indianapolis Area	\$ 93,000	\$ 88,000
Phoenix	\$ 91,000	\$ 88,200
Cleveland	\$ 88,600	\$ 95,800
Detroit	\$ 84,400	\$ 86,000
Fort Wayne	\$ 73,000	\$ 72,500
South Bend/Mishawaka	\$ 62,900	\$ 63,000

Source: American Chamber of Commerce Researchers Association.  
First Quarter 1992 and Chamber of Commerce of St. Joseph County.

## **UTILITIES**

### **ELECTRIC**

**Indiana Michigan Power Company**  
100 East Wayne Street  
South Bend, IN 46634  
Ph: 233-9371

**Mishawaka Utilities**  
126 North Church Street  
Mishawaka, IN 46544  
Ph: 258-1630

### **GAS**

**Northern Indiana Public Service Company**  
307 North Michigan Street  
South Bend, IN 46624  
Ph: 234-2181  
(New Service Phone: 234-0010)

### **WATER**

**South Bend Water Works**  
224 North Main Street  
South Bend, IN  
Ph: 284-9236

**Mishawaka Utilities**  
126 North Church Street  
Mishawaka, IN 46544  
Ph: 258-1630

## EDUCATION

Public School Corporations in the county include South Bend Community School Corporation, School City of Mishawaka, and Penn-Harris-Madison School Corporation. Together, these represent 41 elementary schools, nine middle schools, seven high schools, and two special education schools.

Covering the outlying communities, the John Glenn School Corporation serves Walkerton, New Carlisle is served by New Prairie United School Corporation, and the Union-North United School Corporation serves the Lakeville area.

1. South Bend School Corp.:  
Acting Superintendent--Dr. Virginia B. Calvin  
635 Main St.  
South Bend, IN  
46601  
Ph: 282-4000

School board meetings are held on the 1st and 3rd Mondays of each month. First Monday meeting is at 7:30 p.m.; 3rd Monday meeting is at 3:30 p.m. Both are held at the Community Education Center, 635 South Main, South Bend, Indiana.

Board of School Trustees - Next election is November, 1996. Members serve four-year terms. There is no election in the primary.

		<u>Term Expires</u>
At-Large	Dr. Robert Sweeney	'96
At-Large	Karen White	'96
District #1	Mark Chambers	'98
District #2	Richard P. Morrison	'98
District #3	Bruce A. McMillen	'96
District #4	Colette Bonds	'96
District #5	Marcia Jasiewicz	'98

2. School City of Mishawaka:  
Superintendent--Stella C. Batagiannis  
402 S. Main St.  
Mishawaka, IN 46544  
Ph: 258-3000



School board meetings held on the 2nd and 4th Tuesdays of each month at 8:00 p.m. Call 258-3000 for location.

Board of School Trustees - All members are appointed by the City Council with four-year terms.

	<u>Term Expires</u>
Toni Klatt-Ellis	'98
Dale Emmons	'97
Donna McCampbell	'98
Emery Petko (Pres)	'95
John Roggeman	'96

3. Penn-Harris Madison School Corp:  
Superintendent--Robert MacNaughton  
5900 Bittersweet Rd  
Mishawaka, IN 46544  
Ph: 259-7941

School board meetings are held on the 2nd and 4th Monday of every month at 7:30 p.m. Call 259-7941 for location.

Board of School Trustees - All members are elected with four-year terms.

Penn	Zvella Beutter	'96
Penn	Dr. Robert Proudfit	'98
Penn	Jane Wright	'96
Harris	Judy Wetter	'96
Madison	Larry Beehler	'98

4. Union-North School Corp:  
Superintendent--Dr. David L. Pruis  
P.O Box 429  
Lakeville, IN 46536  
Ph: 784-8141

5. John Glenn School Corp:  
Superintendent--David M. McKee  
506 Roosevelt Rd  
Walkerton, IN 46574  
Ph: 586-3129

6. New Prairie School Corp:  
Superintendent: J. David Myers  
5329 N. Cougar Rd.  
New Carlisle, IN  
46552  
Ph: 654-7273

Parochial schools are also available as options to a public school education. There are 18 Catholic schools in the county--16 elementary and two high schools. All are part of the Catholic Diocese of Ft. Wayne/South Bend. Some 5,500 students attend Catholic schools in St. Joseph County. The *Superintendent* of the Catholic Diocese of Ft. Wayne/South Bend is Dr. Jeanette Kam. For information regarding Catholic schools, contact:

Associate Superintendent: Kathleen Barrett-Jones

1328 W. Dragoon Tr.  
Mishawaka, IN  
46544  
Ph: 255-1387

#### **Colleges & Universities:**

St. Joseph County offers many post-secondary educational facilities with diverse courses of study. The major college campuses are:

*Bethel College*  
1001 W. McKinley Avenue  
Mishawaka, IN 46545  
Ph: 259-8511

*Holy Cross College*  
Notre Dame, IN 46556  
Ph: 233-6813

*Indiana University South Bend*  
1700 Mishawaka Avenue  
South Bend, IN 46615  
Ph: 237-4111

*St. Mary's College*  
Notre Dame, IN 46556  
Ph: 284-4000

*University of Notre Dame*  
Notre Dame, IN 46556  
Ph: 239-5000

Vocational and technical instruction are given at the following:

*Davenport College*

7121 Grape  
Granger, IN 46530  
Ph: 277-8447

*Indiana Vocational Technical College*

34 W. Sample Street  
South Bend, IN 46619  
Ph: 289-7001

*Michiana College*

1030 East Jefferson Boulevard  
South Bend, IN 46617  
Ph: 237-0774

## LICENSED CHILD CARE CENTERS

(Alphabetized by city)

### Granger

Friends Day Care	51410 Bittersweet Road	272-5660
Red Barn Day Care	13377 State Road 23	277-5501

### Mishawaka

ABC Child Care Learning	1618 Milburn Street	255-9139
ABC Playhouse	1145 East 5 Third Street	255-4968
Battel Center Head Start	904 North Main Street	256-5604
CANCO Day Care	609 John Glen Court	256-0010
Early Learners Day Care	222 West Broadway Street	256-0623
Kare Bear Learning Center	4508 Vistula Drive	255-7915
La Petite Day Care	130 Catalpa Street	255-3701
LaSalle Elementary School	1511 Milburn Boulevard	234-6041
Winnie The Pooh Day Care	129 North West Street	256-5447

### North Liberty

Meadows/Community Building	635 Meadow Drive	656-3477
----------------------------	------------------	----------

### Notre Dame

Early Childhood Development Center	St. Mary's College	284-4693
Early Childhood Development Center	18680 Bulla Road	284-4683

### Osceola

Osceola Church Head Start	431 North Beech Road	674-5363
---------------------------	----------------------	----------

### South Bend

Alphabet Academy	1302 East Indiana	289-5094
Broadway Christian Parish Church	1412 North Main Street	234-4972
Castle School & Day Care	1114 Mayflower Road	288-3885
Children's Center	333 West Colfax Avenue	234-7613
Circle of Mercy Day Care	505 North Lafayette Boulevard	287-0500
Del's Day Care	322-328 Studebaker	233-1552
Dickenson Day Care Center	628 Western Avenue	234-6261
East Bank Day Care Center	403 East Madison Street	234-2747
Epworth Church	2404 Lincolnway West	233-4669
First United Methodist Head Start	333 North Main Street	234-6041
Friends School & Day Care	53061 Nadine Street	273-1377

Good Shepard Church Head Start Center	1021 Manchester Drive	
Hansel Center	1045 West Washington Street	234-6041
IUSB Children's Center	1700 Mishawaka Avenue	237-4485
La Petite Academy	521 North St. Joseph Street	234-7109
Learning Twig Day Care	2121 Elmwood Street	254-6041
Little People's Learning Center	430 South 26th Street	289-3939
Martin's Day Care	2208 West Linden Street	234-6041
North West Housing Head Start Center	1831 North Freemont Street	288-3351
Northwest United Methodist Day Care	21855 Brick Road	272-4971
Nuner School Head Start Center	2715 Vine Street	288-6617
Portable Unit Head Start Center	533 South Scott Street	232-5277
St. Joseph Child Care Center	425 North Saint Louis	287-4434
Southeast Christian	1412 South Carroll Street	287-8088
Westminster Church Head Start Center	1501 West Cleveland Road	277-0997

For a complete list of other facilities, please contact Community Coordinated Child Care (4 C's) at 289-7815 or 1-800-524-4533.

## TRANSPORTATION

Bus lines, full rail services, and the second busiest airport in Indiana, offer local residents and commerce the most modern transportation facilities.

The local airport, called the **Michiana Regional Transportation Center**, offers nine passenger airlines serving major hub airports of Cincinnati, Detroit, Ft. Wayne, St. Louis, Indianapolis, Pittsburgh, Nashville, and Chicago with continuing flights to over 100 cities.

*Michiana Regional Transportation Center*  
4477 Terminal Drive (off of Lincolnway West)  
South Bend, IN 46628  
Ph: 233-2185

There are two **passenger** rail services. The **Chicago South Shore** offers an electric commuter line connecting South Bend and Northern Indiana points with the downtown Chicago Loop. **Amtrak** offers the area's principal passenger rail service with direct connection between Chicago and Detroit.

*Chicago South Shore*  
4477 Terminal Drive  
(*Michiana Regional Transportation Center*)  
South Bend, IN 46628  
Ph: 233-3111 for tickets & schedule  
or 1-800-356-2079 for further information

*Amtrak*  
598 Dey  
Niles, MI  
Ph: 684-5763  
Inter-city General Info: 1-800-872-7245

There are four **freight** rail services:

Consolidated Rail Corporation (CONRAIL)  
Grand Trunk & Western  
Norfolk Southern  
Chicago South Shore & South Bend Railroad

**Bus lines** include out-of-town travel as well as intra-city travel.

Inter-city bus lines: United Limo, Trailways, and Greyhound Bus Lines.

Intra-city bus lines: **Transpo** (municipal bus line)

901 Northside Blvd.

South Bend, IN 46624

Ph: 233-2131

Current Fare: .75 one way

65 & Older - .35

Children four and under - Free

**STS - Specialized Transportation System** (for elderly & handicapped)

4001 W. Sample

South Bend, IN 46619

Ph: 232-0061

## **HEALTH CARE**

St. Joseph County is a regional center for health care; local facilities attract patients from the entire north central and southwest Michigan areas. Local institutions currently provide more than 1,500 beds (and bassinets) in the community, with expansion taking place on a regular basis. More than 11,000 residents earn a living in some sector of the health care industry, and health care puts millions of dollars into the local economy each year.

The county also boasts more than 2,500 medical professionals in many specialties. The 1990 census showed that 489 physicians, 136 dentists, and 2,199 registered nurses take care of the needs of the local residents.

The South Bend Medical Foundation provides 24-hour laboratory service to area hospitals and a residency program in pathology. Over the past 70 years, the organization has received recognition on local, state, and national levels for service and teaching excellence, and has become a significant element in the overall quality of local health care.

### **MEMORIAL HOSPITAL OF SOUTH BEND**

615 North Michigan Street

South Bend, IN 46601

Ph: 232-7676

With 526 adult beds and 80 bassinets, Memorial is the region's largest hospital and is known for its regional referral centers for heart, OB/GYN, rehabilitation, and cancer diagnostic treatment and rehabilitation. Its Neonatal Intensive Care Unit is the only 3 unit in the region, with specialized transport service and personnel available to transport infants from regional hospitals to the Memorial NICU. "Nature's Cradle," a crib that simulates the environment of the womb for the premature infant, is just one of the more recent technological additions to the center's OB/GYN treatment capabilities.

Its new outpatient surgery center (which opened in November 1991) is designed in a "patient-centered" manner that houses all surgical, lab, pharmacy, X-ray, and other services in the same area to bring services to the patient, rather than transport patients to services.

### **MICHIANA COMMUNITY HOSPITAL**

2515 East Jefferson Boulevard

South Bend, IN 46615

Ph: 288-8311

Founded in 1948 as South Bend Osteopathic Hospital, Michiana Community Hospital is the largest entity of OMNI Healthcare Systems, Inc., which offers a complete array of health care services, both in and out of the traditional hospital setting.



Michiana Community is a 107-bed institution that offers a full range of acute care diagnostic and treatment services: critical care, a 24-hour emergency department, medical imaging (including CAT scan and MRI), Michiana Medical Laboratory (including direct access services), obstetrics, pediatrics, physical therapy, rehab services, community education, diabetes management, and screening programs. Michiana Community recently renovated and enlarged its obstetric facilities, complete with LDR rooms which use a single unit for labor and delivery.

#### **ST. JOSEPH MISHAWAKA HEALTH SERVICES**

215 West Fourth Street  
Mishawaka, IN 46544  
Ph: 259-2431

St. Joseph Mishawaka Health Services has been serving the community since 1910 with a full range of acute care services, including the Genesis Birth Center, diagnostic services, 24-hour emergency services, the Transitional Care Center, and the community's most comprehensive diabetes education program.

The hospital is only one facet of St. Joseph Mishawaka Health Services, Inc., which now serves the community in three additional locations. These facilities include Edison Lakes Medical Center, the Linden Vale Hospital, and the Healthy Family Center.

#### **ST. JOSEPH'S MEDICAL CENTER**

801 East LaSalle Avenue  
South Bend, IN 46617  
Ph: 237-7111

Located in the heart of South Bend, St. Joseph's Medical Center offers specialized services in emergency/trauma, heart, cancer, rehabilitation, pediatrics, kidney dialysis, orthopedic, and critical care.

The 59,000 square-foot Outpatient Center provides convenient outpatient services, including the Eye Laser Center, the Women's Resource Center, Rehabilitation Services, Audiology Services, Radiology, and the Laboratory. The contemporary three-level atrium provides easy access between the outpatient area and the Medical Center.

The obstetrics unit, called The Family Birthplace, the LDRP unit features labor/deliver/recover/post-partum single-room maternity care. Kidney lithotripsy services, laser surgery and the innovative Easy Street modules have also added dimensions to Medical Center Services. The Occupational Medicine Network serves the business community through three facilities: the Center for Business Health, the Center for Industrial Rehabilitation, and the Center for Pain Rehabilitation.

The Medical Center is a member of St. Joseph's Care Group and the Holy Cross Health System, sponsored by the Sisters of the Holy Cross.

**SOUTH BEND CLINIC**  
211 North Eddy at LaSalle  
South Bend, IN 46617  
Ph: 234-8161

The South Bend Clinic was begun in 1916 after Dr. Walter Baker was inspired by a visit to the newly founded Mayo Clinic where he saw the advantages of medical specialists practicing together.

In 1991, the South Bend Clinic had over 180,000 patient visits and saw over 12,000 new patients. One in four new patients were referrals by other physicians. The group also opened a new building in Granger in 1992 to house its branch facility, Granger Family Medicine. Laboratory, ambulatory surgery, after-hours doctor, x-ray, and mammography services are available at the Clinic.

## **Mental Health Care**

**CHARTER HOSPITAL**  
6704 N. Gumwood Road  
Granger, IN 46530  
Ph: 272-9799

Charter Hospital of South Bend is the county's first psychiatric facility and the first such facility to be added to the area's health care industry. Charter, with its three counseling centers, offers a full continuum of mental health care. Care ranges from the diagnostic area to inpatient and outpatient treatment, in addition to follow-up aftercare of mental health problems, including depression and anxiety disorders, as well as substance abuse and chemical dependency. Charter is designed for up to 60 patients in three separate units: youth therapy, adolescent treatment, and adult services.

**MADISON CENTER ON THE RACE**  
403 East Madison  
South Bend, IN 46617  
Ph: 234-0061

Madison Center and its facilities have been committed to caring for the mental health needs of St. Joseph County for more than 40 years, offering employee assistance programs, psychological testing, substance abuse treatment, behavioral health inpatient programs, group home and apartment settings for long-term patients, and other mental health-related professional services. The Center also operates East Bank Day Care and Sylvan Learning Center.

In addition to Madison Center's downtown location, a new satellite facility, Madison Center at Edison Lakes, has opened in the Edison Lakes Complex. The Center also has contracted with Indiana University to run its South Bend campus counseling center.

## LICENSED NURSING HOMES OF ST. JOSEPH COUNTY

*Countryside Place*  
811 E. 12th Street  
Mishawaka, IN 46544  
Ph: 259-1917  
Fax: 256-9825

*Meridian-Cardinal*  
1121 E. LaSalle  
South Bend, IN 46617  
Ph: 287-6501  
Fax: 239-2936

*St. Paul's Healthcare*  
3602 S. Ironwood Drive  
South Bend, IN 46614  
Ph: 291-8205  
Fax: 291-0858

*Fountainview Place*  
600 W. Tanglewood  
Mishawaka, IN 46545  
Ph: 277-2500

*Meridian-River Park*  
915 S. 27th Street  
South Bend, IN 46615  
Ph: 287-1016  
Fax: 287-1018

*Transitional Health Care*  
5024 W. Western Avenue  
South Bend, IN 46619  
Ph: 288-1464  
Fax: 288-1655

*Greensprings Manor  
Healthcare*  
1106 S. 20th Street  
South Bend, IN 46615  
Ph: 288-6283  
Fax: 234-2908

*Miller's Merry Manor*  
220 E. Dunn Street  
New Carlisle, IN 46552  
Ph: 654-7244  
Fax: 654-8283

*Trinity Living Center*  
4600 W. Washington Ave.  
South Bend, IN 46619  
Ph: 282-1294  
Fax: 287-9194

*Hamilton Grove*  
31869 Chicago Trail  
New Carlisle, IN 46552  
Ph: 654-3118  
Fax: 654-7824

*Milton Home*  
206 E. Marion Street  
South Bend, IN 46601  
Ph: 233-0165  
Fax: 237-9818

*Healthwin Hospital*  
20531 Darden Road  
South Bend, IN 46617  
Ph: 272-0100

*Northwood Nursing Home*  
328 N. Notre Dame Avenue  
South Bend, IN 46617  
Ph: 232-4486  
Fax: 289-9770

*Holy Cross Care and Rehab*  
17475 Dugdale Road  
South Bend, IN 46635  
Ph: 271-3990  
Fax: 239-4908

*Regency Place*  
52654 N. Ironwood Place  
South Bend, IN 46635  
Ph: 277-8710  
Fax: 271-4393

*Ironwood Health and  
Rehab*  
1950 Ridgedale Road  
South Bend, IN 46614  
Ph: 291-6722  
Fax: 291-8768

*St. Paul's Healthcare*  
3602 S. Ironwood Place  
South Bend, IN 46614  
Ph: 291-8205  
Fax: 291-0858