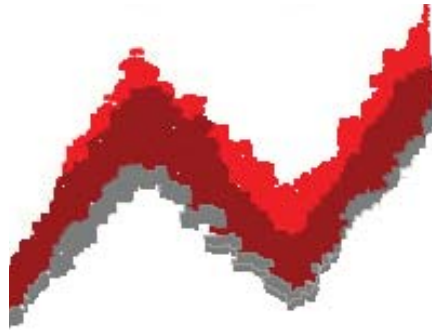
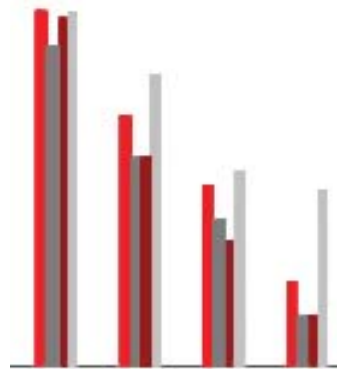
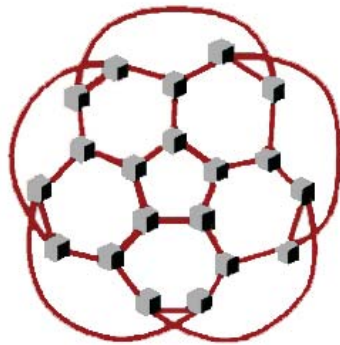


# OFFICE OF THE REGISTRAR ENROLLMENT REPORT

## A SUMMARY OF SPRING 2008



This report is also available with color graphics at: <http://registrar.indiana.edu/enrollreports/>

**INDIANA UNIVERSITY - BLOOMINGTON**  
**DATA MANAGEMENT & ADMINISTRATION 812-855-6235**

# PREFACE

---

This report is a companion report to the Fall 2007 *Enrollment Report* issued October 24, 2007. Its primary emphasis is on Spring Term 2008 enrollment. Historical data for selected years are also presented.

Most of the information contained in the *Enrollment Report Update* results from the analysis of data collected from detailed enrollment statistical reports. Most Spring Term data reflect the end of the first week of classes, January 13, which is the official enrollment reporting cut-off date. Data in this report focus on campus enrollment management and operations to support campus planning activities, and therefore may not agree with official enrollment data that focus on prescribed formulas. Official enrollment data are released by University Reporting and Research in compliance with national and state standards set by external agencies.

Data definitions and methods of calculations are explained throughout this report. Our selections of analytical approaches are not the only ones possible. The collective use of simple formulas to meet all the data needs at a complex institution is not attainable. If you encounter data other than what appears in this publication, you should probe for the data source, methodology used to produce the results, and intended use of the data.

Suggestions or comments for improvement of this publication are welcome.

## Contributors:

Roland A. Côté  
Registrar

Susan E. Langsdale  
Senior Associate Registrar

Linda Shepard  
Senior Assistant Registrar and Manager of Reporting and Research

Barbara Bunch  
Senior Research Analyst

Mike Sauer  
Senior Research Analyst

Erika Knudsen  
Data Management Analyst/Consultant

Donna Rinckel  
Enrollment Information Coordinator

Adam Leary  
Research Analyst

Office of the Registrar  
Indiana University  
Franklin Hall, Room 234  
601 East Kirkwood Avenue  
Bloomington, Indiana 47405-1223  
(812)855-2654

February 12, 2008

# TABLE OF CONTENTS

---

---

<b>HIGHLIGHTS</b> .....	1
<b>TERMINOLOGY</b> .....	2
<b>COMPARISON WITH FALL TERM</b> .....	5
<b>HISTORICAL ENROLLMENT SUMMARY</b> .....	7
<b>CAMPUS LEVEL ENROLLMENT</b>	
HEADCOUNT BY STUDENT LEVEL .....	8
AUDIT ENROLLMENTS .....	10
FULL-TIME/PART-TIME .....	11
CREDIT HOUR LOAD .....	14
GENDER .....	16
ETHNIC GROUPS .....	19
RESIDENCE CLASSIFICATION .....	24
<b>STUDENT SCHOOL ENROLLMENT</b>	
HEADCOUNT BY STUDENT SCHOOL .....	27
CREDIT HOUR LOAD (SCHOOL).....	30
<b>COURSE INFORMATION</b>	
CREDIT HOURS AND COURSE ENROLLMENTS .....	31
G901 ENROLLMENTS .....	36
COLLEGE DEPARTMENTS .....	37
GRADE DISTRIBUTION - HISTORICAL .....	39
<b>PEER INSTITUTIONS</b>	
BIG TEN .....	43
<b>STUDENT PERSISTENCE</b> .....	44

# HIGHLIGHTS

---

IU-Bloomington enrollment for Spring 2008 shows a campus enrollment of 37,351 students, up from last year by 1.8% (+653 students), surpassing the record set last spring. Several student populations are bolstered by the campus record enrollment and also show **record-high** figures:

- 7,284 sophomores (+6.9% from last year)
- 6,540 juniors (+12.2%)
- 28,179 total undergraduate (+1.9%)
- 10,147 nonresident undergraduate (+7.3%)
- 5,093 nonresident graduate (+5.2%)
- 16,110 nonresident total enrollment (+5.7%)
- 26,576 full-time undergraduate enrollment (+2.0%)
- 4,481 full-time graduate enrollment (+3.8%)
- 32,028 full-time total enrollment (+2.1%)
- 19,230 female total enrollment (+0.5%)
- 18,121 male total enrollment (+3.2%)
- 3,997 total U.S. minority enrollment (+4.3%)
- 1,606 African American enrollment (+1.4%)
- 1,355 Asian American enrollment (+4.8%)
- 932 Hispanic American enrollment (+9.1%)
- 104 Native American enrollment (+2.0%)
- 3,653 International student enrollment (+10.1%)

Credit hours are at a new record-high figure for the campus due to record figures at the undergraduate and graduate course levels. The campus average credit hour load, at 13.09, shows an increase this year, as did the average number of credit hours taken by undergraduates (14.50). The record high credit hour load figures remain at 13.23 for the campus in Spring 2004 and 14.52 for undergraduate in Spring 1975.

# TERMINOLOGY

---

Data contained in these reports are for operational planning purposes. If official enrollment figures are needed for Indiana University-Bloomington, please consult the University Reporting and Research office (<http://www.indiana.edu/~urr>).

In the fall of 2004, IU implemented a new Student Information System (SIS) consisting of both the implementation of operational (SIS) and reporting and retrieval (IUIE) environments. This conversion has had a profound impact on business processes, terminology and data structures. For analysis and reporting, comparability is often not attainable and has been noted throughout the report. In some cases, the terminology used in SIS is not directly comparable to terms used in our academic businesses (e.g., a program/plan in SIS can be equated to a department/major in our academic world). General definitions are provided here as a central point of reference.

All reports, unless otherwise noted, use the official reporting period, which since 1984 is the end of the first week of classes. Prior to 1984, the official reporting time was the end of the third week of classes.

## REPORTING DEFINITIONS

### **Enrollment Totals:**

The enrollment total provides a unique headcount of students on campus. Beginning in 1988, auditors (students enrolled in audit hours only) are excluded from the headcount figures. See the definition of Auditors below.

### **School Enrollment Totals:**

Beginning Spring Term 2005, students can be enrolled in dual careers (e.g., MBA/LAW students are in Graduate and Law careers). Students enrolled in multiple careers are counted under each school, so MBA/LAW students will be counted in both Business and Law. Since these students are counted under each school/career, the totals by school will not match the campus total (which is a unique student headcount). This report has been divided into two sections to help distinguish campus level from school level enrollments.

### **Auditors:**

Students registered for audit enrollments and not taking any course for credit are considered auditors. Since Fall 1988, these students are excluded from Bloomington headcount figures and their enrollments are excluded from course enrollment figures.

### **Credit Hours and Course Enrollments:**

Courses that have credit-bearing sections are included in credit hour and course enrollment totals. While the credit-bearing section is typically the lecture section of a course, there are instances where the credit is assigned to the discussion or lab section, for example. Audit hours, waitlisted hours, and dropped hours are not included in the totals.

### **Course School:**

The school in which a course is taught is considered the course school. For example, BUS-A100 is taught in the course school of Business and Math-M118 is taught in the course school of Arts and Sciences. University Division does not offer any courses and therefore is not a course school.

### **Student School:**

The school that houses the student's major is considered a student school. In this case, University Division is considered a student school. However, Military Sciences offers courses and is considered a course school but it does not offer majors, so it is not considered a student school.

**Student Level:**

Students are classified into the following levels of study: Undergraduate, Graduate, Professional, and Nondegree. This is similar to the SIS terminology of student career; however, the professional student level contains the careers of Law and Optometry. Also, nondegree students are not discernable when using a career in SIS.

**Full-time/Part-time Status:**

Full-time students are defined as undergraduate, professional, and nondegree students enrolled in 12 or more hours and graduate students enrolled in eight or more hours. Note that graduate students who are taking the 6-credit G901 advanced research course are classified as part-time students by this definition.

**Credit Hour Load:**

Currently, Indiana University uses a flat-fee structure for undergraduates, which means that students can take between 12 and 17 hours and be assessed a flat fee. Undergraduates taking more than 17 hours or less than 12 hours, and graduate, professional, and nondegree students are assessed a per-credit-hour fee. Between Fall 1976 and Fall 1991, the campus followed a per-credit-hour fee structure for all students.

**Degrees:**

Annual degree counts are based on the fiscal year, and therefore include all degrees from July 1st to June 30th. Degrees can be granted at the end of every month and at the three major degree periods (December, May, and August).

**Term:**

A term refers to the specific length of time a student is enrolled in a particular course. Previously, Indiana University had two semesters and two summer sessions (one eight-week session, one six-week session) per academic year. The nomenclature for semester within the SIS system is "term". Currently, Indiana University has three terms, Fall, Spring, and Summer.

**Major:**

A major refers to the student's academic course of study. Students can enroll in multiple majors at once, as long as they finish all the requirements for each before graduation. In SIS, majors are called Academic Plans; however, Academic Plans can also refer to minors and certificates. Majors are differentiated from minors in this report.

**Course Department:**

A course department refers to the department which offers the course. In SIS, course departments are stored as part of the subject area. The course department is represented as the first three or four letters of a course number (e.g., FRIT-F100 is housed in the department of FRIT or French and Italian).

**School Abbreviations:**

Listed below are some common abbreviations that are included in this report.

COLL: College of Arts and Sciences  
GRAD: Graduate School  
HPER: School of Health, Physical Education, and Recreation  
SCS: School of Continuing Studies  
SLIS: School of Library and Information Science  
SPEA: School of Public and Environmental Affairs

**IEP:**

Intensive English Program (a part of CELT, Center for English Language Training). This is a program that enrolls international students in zero-credit courses to improve their English comprehension.

**GPA: (Grade Point Average):**

This can refer to either the student's cumulative grade point average over all terms or it can refer to the grade point average for a single term. It can also refer to the grade point average of students in a course or school.

**Useful Websites:**

Course and Section Enrollments

<http://www.indiana.edu/~registra/coursesectn/>

Grade Distribution Reports

<http://www.indiana.edu/~registra/gradedist/>

Special Course Listings

<http://registrar.indiana.edu/~registra/specialcourse.shtml>

Life Sciences

<http://lifesciences.iu.edu/>

# COMPARISON WITH FALL TERM

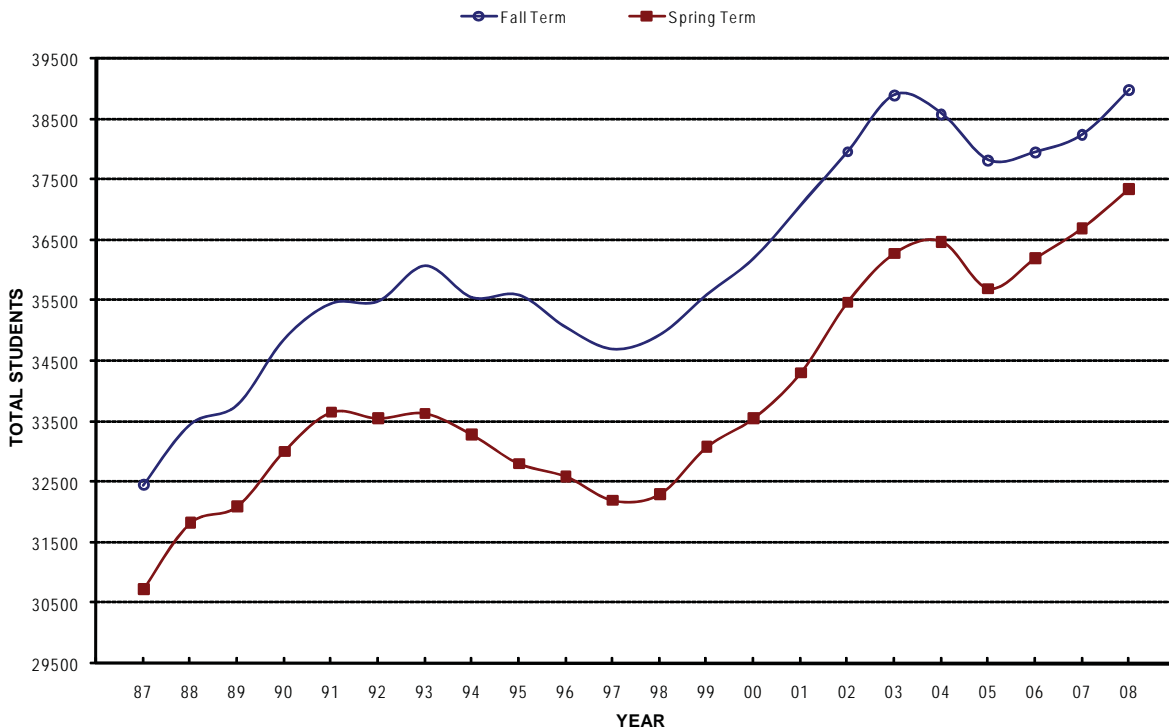
The record enrollment figure for Spring 2008, at 37,351, follows a record fall enrollment figure of 38,990. The retention of students from the Fall to Spring term is at record high levels for both undergraduates and the campus, at 94.8% and 93.4%, respectively.

The increase for Spring 2008 is 653 students (+1.8%) and the increase for Fall 2007 was 743 students (+1.9%). Typically spring enrollments are lower than fall enrollments and this year is no exception with Spring 2008 enrollment showing 1,639 fewer students than Fall 2007.

Undergraduate enrollment for Spring 2008 is a record high figure, at 28,179, while the Fall 2007 figure (at 29,734) is up from the previous year but did not break the record figure set in 2002 (and 2003), at 29,768. Record high enrollments are shown for the Spring sophomore and junior classes. For Fall, only the sophomore class reported a record figure. For both Spring and Fall terms, graduate enrollments show increases while professional enrollments show decreases. Nondegree enrollments were up for the Fall but are down for the Spring.

Figure 1 shows the trend for fall and spring term campus enrollment since 1987.

FIGURE 1: FALL AND SPRING ENROLLMENT COMPARISON



Year labels on the graph follow the spring term.



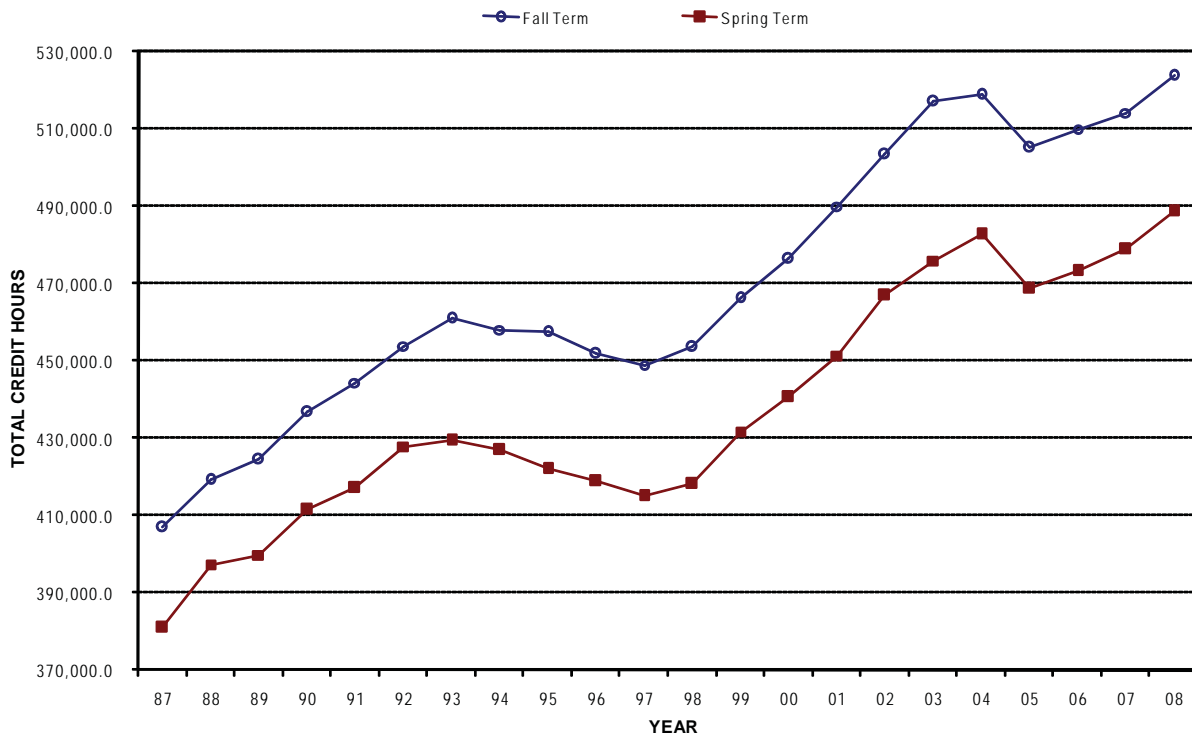
There are record shares of nonresident students at the undergraduate, graduate, professional, and campus levels for both Fall and Spring terms. Again this year, the entire gain in campus enrollment for both Spring and Fall terms can be attributed to gains in nonresident enrollments (+872 students, +5.7% for Spring and +975 students, +6.1% for Fall). The same is true for undergraduate and graduate enrollments; for Spring and Fall, the gain for nonresident enrollments outweigh the losses in resident enrollments.

For US minority enrollments, there were record shares reported for Fall 2007 (at 10.6%) and Spring 2008 (at 10.7%). For Spring, all US minority categories (African American, Asian American, Hispanic, and Native American) show record enrollment figures; this mirrors the trend shown for Fall 2007, except for African American enrollment which reported a 4 student decrease.

Credit hours show increases for both Spring 2008 and Fall 2007 for undergraduate, graduate students, and the campus whereas professional students show decreases both terms. Credit hours for nondegree students are up for Spring but were down slightly in the Fall.

Total credit hours for fall and spring terms are graphically displayed in Figure 2.

FIGURE 2: FALL AND SPRING CREDIT HOUR COMPARISON



Typically, students take a larger credit hour load in a fall term compared to the following spring term. The campus credit hour load for Fall 2007 was 13.44, the same as the previous fall term, while the Spring 2008 credit hour load is 13.09, up slightly from the previous spring. Fall 2007 reported a record undergraduate credit hour load of 14.76, compared to 14.50 for Spring 2008, which is up slightly from the previous Spring but slightly lower than the 1975 record figure of 14.52.

HISTORICAL ENROLLMENT SUMMARY  
END OF THE FIRST WEEK OF CLASSES - SPRING TERMS

	Record High Years		1996	1997	1998	1999	2000	2001	2002	2003	2004	2005	2006	2007	2008	Change	
	Year	Num/Pct														Number	Percent
ENROLLMENT:																	
Freshman			5,138	5,250	5,348	5,886	6,128	6,277	6,279	6,411	5,827	5,647	6,045	6,198	5,949	-249	-4.0%
Sophomore			5,675	5,563	5,798	5,961	5,924	6,331	6,650	6,577	6,759	6,296	6,190	6,813	7,284	+471	+6.9%
Junior			5,340	5,102	5,149	5,469	5,740	5,504	6,043	6,145	6,336	6,394	6,156	5,829	6,540	+711	+12.2%
Senior			7,817	7,755	7,736	7,732	7,831	8,213	8,536	8,797	9,123	9,017	8,969	8,812	8,406	-406	-4.6%
UNDEGRADUATE			23,970	23,670	24,031	25,048	25,623	26,325	27,508	27,930	28,045	27,354	27,360	27,652	28,179	+527	+1.9%
GRADUATE	1976	7,755	6,288	6,240	6,167	6,096	5,949	5,936	6,048	6,295	6,553	6,508	6,601	6,703	6,884	+181	+2.7%
PROFESSIONAL			875	894	900	891	876	879	874	906	907	915	948	922	902	-20	-2.2%
NONDEGREE/UNCLASSIFIED	1994	1,522	1,459	1,391	1,200	1,043	1,105	1,163	1,044	1,150	968	917	1,291	1,421	1,386	-35	-2.5%
TOTAL			32,592	32,195	32,298	33,078	33,553	34,303	35,474	36,281	36,473	35,694	36,200	36,694	37,351	+653	+1.8%
% NONRESIDENT																	
Undergraduate			26.3%	26.6%	27.1%	27.4%	28.4%	29.4%	30.8%	32.1%	32.9%	33.0%	32.9%	34.2%	36.0%		
Graduate			72.4%	73.8%	73.2%	72.6%	72.5%	73.1%	73.1%	72.4%	73.0%	71.4%	71.2%	72.2%	74.0%		
Professional			41.0%	41.8%	44.9%	44.4%	47.0%	45.2%	45.9%	47.4%	49.0%	50.5%	53.8%	55.9%	56.4%		
Campus			36.3%	36.9%	36.9%	36.4%	37.0%	37.7%	38.6%	39.4%	40.5%	40.3%	40.3%	41.5%	43.1%		
% FULL-TIME			83.0%	83.1%	83.7%	84.4%	85.2%	85.6%	85.5%	85.2%	86.2%	86.2%	85.3%	85.5%	85.7%		
% FEMALE			53.1%	53.1%	52.9%	52.9%	53.0%	52.7%	52.3%	52.3%	52.1%	51.6%	52.1%	52.2%	51.5%		
% US MINORITY			9.2%	9.1%	9.0%	9.2%	9.2%	9.3%	9.2%	9.2%	9.5%	9.7%	10.3%	10.4%	10.7%		
FALL-TO-SPRING PERSISTENCE																	
Freshmen	1988	93.5%	91.5%	91.7%	91.7%	92.3%	91.9%	91.7%	92.0%	92.5%	92.1%	92.2%	92.3%	92.9%	94.3%		
Sophomores			92.0%	93.2%	92.4%	93.5%	93.6%	93.0%	94.6%	93.4%	94.5%	94.7%	94.0%	94.4%	94.6%		
Juniors			93.5%	93.2%	93.7%	93.7%	93.4%	93.0%	95.9%	95.5%	96.2%	95.5%	96.4%	95.7%	96.2%		
Seniors			91.6%	92.1%	92.9%	92.7%	92.2%	92.8%	93.9%	94.1%	94.2%	94.2%	93.9%	94.4%	94.1%		
UNDEGRADUATE			92.1%	92.5%	92.6%	93.0%	92.8%	92.6%	94.0%	93.8%	94.2%	94.1%	94.1%	94.3%	94.8%		
CREDIT HOURS			418,933.5	415,007.5	418,220.5	431,669.0	440,672.5	451,397.0	467,072.5	475,964.5	482,658.5	468,632.5	473,301.0	478,783.5	488,815.5	+10,032.0	+2.1%
AVERAGE CREDIT HOURS																	
Undergraduate	1975	14.52	14.38	14.46	14.38	14.37	14.42	14.46	14.37	14.37	14.46	14.37	14.41	14.48	14.50		
Campus			12.85	12.89	12.95	13.05	13.13	13.16	13.17	13.12	13.23	13.13	13.07	13.05	13.09		
COURSE ENROLLMENTS			145,793	145,793	147,067	151,572	155,135	160,588	165,889	168,243	169,659	163,523	165,830	167,356	171,583	+4,227	+2.5%

Shaded areas indicate record-high figures based on available data (generally beginning in 1973).

# CAMPUS LEVEL ENROLLMENT

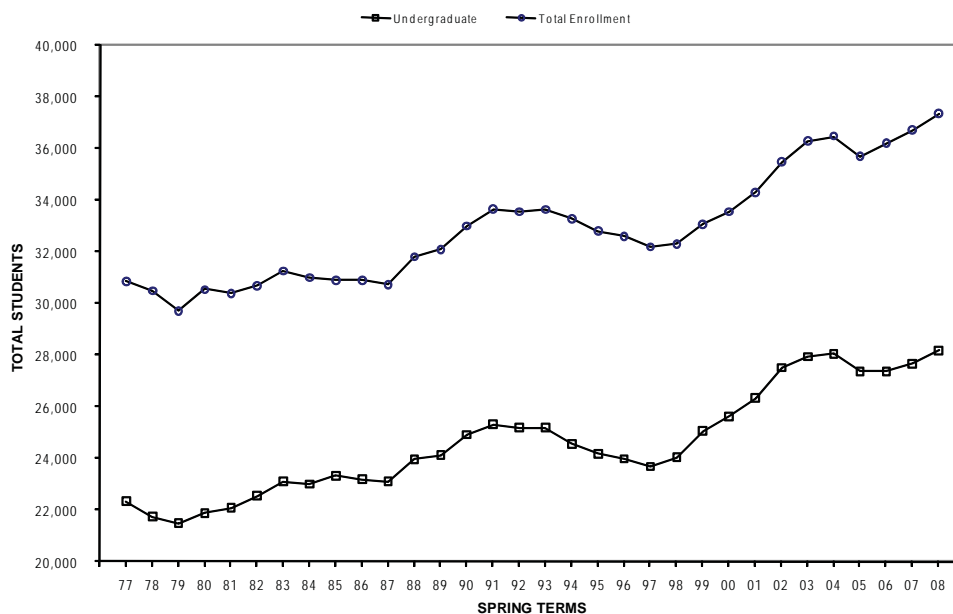
## HEADCOUNT BY STUDENT LEVEL

Indiana University – Bloomington enrollment, at 37,351, is up 1.8% (+653 students) from last year, and is a new record-high figure for spring enrollment. The undergraduate and graduate levels both report increases this year, with the undergraduate level reaching a new record-high figure. These increases outweigh the decreases at the professional and nondegree levels. At the undergraduate level, the sophomore and junior classes are both showing records, and these outweigh the losses with the freshman and senior classes. The junior class in particular shows a substantial increase of 12.2%, which is a larger increase than was seen in the fall (+7.2%). Table 1 shows enrollment by student level and class for this year and last year. Figure 3 shows how undergraduate enrollment mirrors campus level enrollment. See Table 2 for historical enrollments beginning with Spring 1946.

TABLE 1: ENROLLMENT BY STUDENT LEVEL AND CLASS  
SPRING TERMS

Class/Level	Spring 2007	Spring 2008	Change	Percent Change
Freshman	6,198	5,949	- 249	- 4.0%
Sophomore	6,813	7,284	+ 471	+ 6.9%
Junior	5,829	6,540	+ 711	+ 12.2%
Senior	8,812	8,406	- 406	- 4.6%
Undergraduate Total	27,652	28,179	+ 527	+ 1.9%
Masters	3,337	3,431	+ 94	+ 2.8%
Doctoral	3,366	3,453	+ 87	+ 2.6%
Graduate Total	6,703	6,884	+ 181	+ 2.7%
Professional Total	922	902	- 20	- 2.2%
High School	30	35	+ 5	+ 16.7%
Special Undergraduate	550	516	- 34	- 6.2%
Special Grad/Prof	841	835	- 6	- 0.7%
Nondegree Total	1,421	1,386	- 35	- 2.5%
TOTAL	36,698	37,351	+ 653	+ 1.8%

FIGURE 3: TOTAL AND UNDERGRADUATE ENROLLMENT



**TABLE 2: HISTORICAL ENROLLMENT BY CLASS AND LEVEL  
SPRING TERMS**

Spring Terms	Freshman	Sophomore	Junior	Senior	Undergraduate	Graduate (1)	Professional	Non-Dehree Unclaified	Total
1946	2,610	1,242	920	662	5,434	795			6,229
1947	2,935	2,619	1,929	1,250	8,733	1,246			9,979
1948	2,016	2,060	2,637	1,939	8,652	1,465			10,117
1949	1,943	1,554	2,288	2,592	8,377	1,757			10,134
1950	1,979	1,573	1,881	2,492	7,925	2,176			10,101
1951	1,747	1,742	1,667	1,943	7,099	2,621			9,720
1952	1,832	1,429	1,574	1,695	6,530	2,558		274	9,362
1953	2,074	1,421	1,441	1,584	6,520	2,276		189	8,985
1954	2,172	1,551	1,473	1,480	6,676	2,247		227	9,150
1955	2,383	1,699	1,625	1,537	7,244	2,506		196	9,946
1956	2,414	1,860	1,696	1,661	7,631	2,751		236	10,618
1957	2,515	1,852	1,827	1,800	7,994	2,865		171	11,030
1958	2,312	1,832	1,831	1,912	7,887	3,201		214	11,302
1959	2,433	1,673	1,737	2,012	7,855	3,243		236	11,334
1960	2,908	1,842	1,766	1,894	8,410	3,698		305	12,413
1961	3,644	2,042	1,836	1,909	9,431	3,951		244	13,626
1962	3,872	2,594	2,219	1,940	10,625	4,321		263	15,209
1963	4,063	2,862	2,600	2,270	11,795	4,770		405	16,970
1964	4,418	2,831	2,892	2,742	12,883	5,228		340	18,451
1965	4,458	3,072	3,022	3,177	13,729	6,012		330	20,071
1966	5,239	3,924	3,301	2,915	15,379	6,559		324	22,262
1967	5,126	4,490	3,704	3,084	16,404	7,054		383	23,841
1968	5,209	4,085	4,190	4,162	17,646	7,724		422	25,792
1969	5,728	4,070	4,234	5,032	19,064	7,634		389	27,087
1970	5,844	4,572	4,369	5,078	19,863	7,698		256	27,817
1971	6,095	4,666	4,651	5,169	20,581	<b>7,998</b>		249	28,828
1972	6,040	4,655	4,913	5,346	20,954	7,981		693	29,628
1973	5,897	4,540	4,868	5,689	20,994	7,411	626	565	29,596
1974	5,654	4,453	4,702	5,413	20,222	7,492	560	482	28,761
1975	6,048	4,511	4,844	5,250	20,653	7,591	585	686	29,535
1976	6,384	5,083	4,945	5,496	21,908	7,755	568	839	31,070
1977	6,378	5,332	5,118	5,496	22,324	6,939	597	989	30,849
1978	6,049	4,999	5,217	5,479	21,744	6,841	847	1,064	30,496
1979	5,729	5,004	5,134	5,602	21,469	6,313	869	1,058	29,710
1980	6,120	4,823	5,149	5,781	21,873	6,439	846	1,376	30,545
1981	5,902	5,100	5,136	5,923	22,061	6,325	846	1,148	30,380
1982	6,385	4,978	5,345	5,840	22,548	6,101	897	1,153	30,700
1983	6,298	5,330	5,320	6,135	23,083	6,029	892	1,262	31,266
1984	5,447	5,730	5,620	6,194	22,991	5,867	863	1,290	31,011
1985 (2)	5,651	5,482	5,565	6,622	23,320	5,653	840	1,077	30,890
1986	5,591	5,652	5,327	6,610	23,180	5,703	857	1,167	30,907
1987	5,484	5,735	5,462	6,414	23,095	5,672	887	1,066	30,720
1988	5,858	5,885	5,611	6,608	23,962	5,851	889	1,117	31,819
1989 (3)	5,312	6,185	5,892	6,723	24,112	5,912	918	1,151	32,093
1990 (4)	5,714	6,071	6,132	6,994	24,911	5,891	866	1,337	33,005
1991	5,227	6,638	5,908	7,539	25,312	5,958	880	1,500	33,650
1992 (5)	5,273	6,039	6,291	7,575	25,178	6,093	855	1,424	33,550
1993	5,484	5,894	5,794	8,001	25,173	6,243	852	1,363	33,631
1994	5,307	6,031	5,589	7,623	24,550	6,347	861	<b>1,522</b>	33,280
1995	5,347	5,697	5,648	7,478	24,170	6,390	880	1,362	32,802
1996	5,138	5,675	5,340	7,817	23,970	6,288	875	1,459	32,592
1997	5,250	5,563	5,102	7,755	23,670	6,240	894	1,391	32,195
1998	5,348	5,798	5,149	7,736	24,031	6,167	900	1,200	32,298
1999	5,886	5,961	5,469	7,732	25,048	6,096	891	1,043	33,078
2000	6,128	5,924	5,740	7,831	25,623	5,949	876	1,105	33,553
2001	6,277	6,331	5,504	8,213	26,325	5,936	879	1,163	34,303
2002	6,279	6,650	6,043	8,536	27,508	6,048	874	1,044	35,474
2003	<b>6,411</b>	6,577	6,145	8,797	27,930	6,295	906	1,150	36,281
2004	5,827	6,759	6,336	<b>9,123</b>	28,045	6,553	907	968	36,473
2005	5,647	6,296	6,394	9,017	27,354	6,508	915	917	35,694
2006	6,045	6,190	6,156	8,969	27,360	6,601	<b>948</b>	1,291	36,200
2007	6,198	6,813	5,829	8,812	27,652	6,703	922	1,421	36,698
2008	5,949	<b>7,284</b>	<b>6,540</b>	8,406	<b>28,179</b>	6,884	902	1,386	<b>37,351</b>

1. Prior to 1973, both graduate and professional students are included in the graduate count.
2. Effective Fall 1985, the enrollment reporting cut-off date is the end of the first week of classes rather than the end of the third week.
3. Effective Fall 1989, auditors (students enrolled in audit hours only) are excluded from the headcount.
4. Effective Summer 1989, associate level Optometry students are reported in the undergraduate headcount. Previously, all Optometry students were reported in the professional headcount.
5. Effective Fall 1992, the Medical Sciences program moved most of its professional registrations to IUPUI.
6. Shaded areas indicate record highs.

# AUDIT ENROLLMENTS

**Auditors** are defined as students registered for audit enrollments only (i.e., not taking any courses for credit). **Auditing students** are defined as students who are auditing one or more courses, regardless of whether they are also enrolled in other courses for credit. **Audit enrollments** and **audit hours** are the total number of course spaces and enrollment hours accounted for by all students auditing courses. Since Fall 1988, auditors have been excluded from Bloomington campus headcount figures and all audit enrollments have been excluded from course enrollment figures. An audit summary for this year and last year is shown in Table 3. Audit enrollments by course school and department are shown in Table 4.

TABLE 3: AUDIT ENROLLMENTS  
SPRING TERMS

	Spring 2007	Spring 2008	Change	Percent Change
Students				
Auditors	28	47	+ 19	+ 67.9%
Auditing Students	70	87	+ 17	+ 24.3%
Audit Enrollments				
by Auditors	33	57	+ 24	+ 72.7%
by Auditing Students	84	98	+ 14	+ 16.7%
Audit Hours				
by Auditors	99.0	151.5	+ 52.5	+ 53.0%
by Auditing Students	261.0	264.5	+ 3.5	+ 1.3%

TABLE 4: AUDIT ENROLLMENTS BY COURSE SCHOOL AND DEPARTMENT  
SPRING TERMS

School/Department	Audit Enrollments		School/Department	Audit Enrollments	
	Spring 2007	Spring 2008		Spring 2007	Spring 2008
Arts and Sciences			Arts and Sciences		
American Studies	1	1	Psychological and Brain Sciences	1	0
Anthropology	2	1	Religious Studies	0	2
Astronomy	1	1	Second Language Studies	4	2
Biology	1	10	Slavic Languages and Literatures	1	3
Central Eurasian Studies	8	3	Sociology	1	1
Chemistry	2	4	Spanish and Portuguese	8	7
Classical Studies	1	1	Speech and Hearing Sciences	3	1
Cultural Studies	0	1	Statistics	0	1
Comparative Literature	1	0	Telecommunications	0	1
East Asian Lang and Cult.	3	2	Theatre and Drama	2	0
Economics	0	4			
English	5	1	Arts and Sciences Total	69	86
Fine Arts	7	5	Business	0	11
Folklore	2	0	Education	8	9
French and Italian	6	2	Graduate	0	2
Geological Sciences	0	1	HPER	7	7
Germanic Studies	3	4	Informatics	4	8
History	2	6	Journalism	0	0
Honors	1	0	Labor Studies	0	0
India Studies	0	1	Law	16	16
Linguistics	2	7	Library and Information Science	2	5
Latin American and Caribbean Studies	0	2	Medical Sciences	1	0
Mathematics	1	6	Music	5	1
Near Eastern Languages and Cultures	0	2	Optometry	0	0
Philosophy	0	2	SPEA	5	10
Physics	0	1	TOTAL AUDIT ENROLLMENTS	117	155

# FULL-TIME / PART-TIME

**Full-time students** are defined as undergraduate, professional, and nondegree students enrolled in 12 or more credit hours and graduate students enrolled in 8 hours or more. Prior to 1988, graduate students had to be enrolled in at least 9 hours to be considered full-time. Because the definitions of full-time and part-time students are based on credit hours, graduate students enrolled in the 6-credit G901 advanced research course are classified as part-time students in this section (see G901 Enrollments for more detailed information). The definition of a full-time undergraduate student is different from the definition of a full-time load for undergraduates. A **full-time load** for undergraduate students is 15.5 credit hours based on completing a bachelor's degree in eight semesters. The *Credit Hour Load* section of this report shows the number of undergraduate students by credit hour load.

The full-time share of enrollment (85.7%) shows an increase of 0.2 percentage points from last year. This level begins to approach the high share of Spring 2004. The undergraduate, graduate, and nondegree levels show increases in the full-time shares of enrollment with the undergraduate level (94.3%) setting a new record-high share. The graduate level (65.1%) full-time share of enrollment shows an increase of 0.7 percentage points from last year. The nondegree level (11.4%) full-time share shows a 1.2 percentage point increase.

The number of full-time students (32,028) shows a 2.1% (+663 students) increase from last year, for a new record number of full-time students. There are increases in full-time enrollments at the undergraduate (+518 students) and graduate (+164 students) levels with the undergraduate and graduate levels showing record full-time enrollments of 26,576 and 4,481, respectively. At the undergraduate level, the increase in full-time enrollment is driven by the increases in full-time sophomores (+464 students) and juniors (+634 students).

Overall, the part-time share of enrollment shows a decrease (-0.2 percentage points) from last year, reflecting the rise in full-time share. The professional level shows an increase (1.5 percentage points) in the part-time share of enrollment with the undergraduate (-0.1 percentage points), graduate (-0.7 percentage points) and nondegree (-1.2 percentage points) levels showing decreases.

Undergraduate enrollment by full-time/part-time status is shown in Table 5. See Table 6 for historical full-time/part-time enrollments for all student levels and Table 7 for historical full-time/part-time shares of all student levels.

TABLE 5: UNDERGRADUATE FULL-TIME AND PART-TIME  
ENROLLMENT BY CLASS  
SPRING TERMS

Class Standing	Full-Time		Number Change	Percent Change	Part-Time		Number Change	Percent Change
	Spring 2007	Spring 2008			Spring 2007	Spring 2008		
Freshman	6,080	5,857	- 223	- 3.7%	118	92	- 26	- 22.0%
Sophomore	6,596	7,060	+ 464	+ 7.0%	217	224	+ 7	+ 3.2%
Junior	5,467	6,101	+ 634	+ 11.6%	362	439	+ 77	+ 21.3%
Senior	7,915	7,558	- 357	- 4.5%	897	848	- 49	- 5.5%
Total Undergraduate	26,058	26,576	+ 518	+ 2.0%	1,594	1,603	+ 9	+ 0.6%

**TABLE 6: FULL-TIME AND PART-TIME ENROLLMENT BY LEVEL  
SPRING TERMS**

Spring Term	Undergraduate		Graduate		Professional		Nondegree		Total	
	Full-Time	Part-Time	Full-Time	Part-Time	Full-Time	Part-Time	Full-Time	Part-Time	Full-Time	Part-Time
1977	20,743	1,583	4,214	2,723	559	45	155	827	25,671	5,178
1978	19,951	1,793	3,962	<b>2,879</b>	797	52	164	898	24,874	5,622
1979	19,434	2,035	3,662	2,650	813	59	105	951	24,014	5,696
1980	19,953	1,920	3,707	2,732	797	53	143	1,229	24,607	<b>5,938</b>
1981	20,085	1,976	3,587	2,738	767	80	149	998	24,588	5,792
1982	20,551	1,997	3,443	2,658	824	75	131	1,020	24,950	5,750
1983	21,074	2,009	3,433	2,596	819	86	159	1,090	25,485	5,781
1984	20,874	2,117	3,463	2,404	762	107	<b>273</b>	1,011	25,372	5,639
1985	21,175	2,145	3,347	2,306	730	116	226	845	25,478	5,412
1986	21,153	2,027	3,333	2,370	761	97	197	969	25,444	5,463
1987	21,080	2,015	3,222	2,450	782	105	168	898	25,252	5,468
1988	21,948	2,014	3,439	2,412	799	90	193	924	26,379	5,440
1989	22,073	2,039	3,616	2,296	814	104	223	928	26,726	5,367
1990	22,716	2,195	3,677	2,214	796	70	216	1,121	27,405	5,600
1991	23,149	2,163	3,755	2,203	812	68	172	1,328	27,888	5,762
1992	22,924	<b>2,254</b>	3,840	2,253	761	94	166	1,258	27,691	5,859
1993	23,036	2,137	3,893	2,350	758	94	149	1,214	27,836	5,795
1994	22,669	1,881	4,013	2,334	746	115	191	<b>1,331</b>	27,619	5,661
1995	22,453	1,717	3,947	2,443	755	125	164	1,198	27,319	5,483
1996	22,286	1,684	3,866	2,422	736	139	168	1,291	27,056	5,536
1997	22,067	1,603	3,801	2,439	758	136	143	1,248	26,769	5,426
1998	22,352	1,679	3,779	2,388	760	140	145	1,055	27,036	5,262
1999	23,330	1,718	3,735	2,361	735	<b>156</b>	128	915	27,928	5,150
2000	23,995	1,628	3,713	2,236	741	135	141	964	28,590	4,963
2001	24,716	1,609	3,761	2,175	743	136	142	1,021	29,362	4,941
2002	25,662	1,846	3,792	2,256	725	149	158	886	30,337	5,137
2003	26,018	1,912	4,006	2,289	755	151	136	1,014	30,915	5,366
2004	26,291	1,754	4,267	2,286	761	146	110	858	31,429	5,044
2005	25,456	1,898	4,240	2,268	<b>899</b>	16	187	730	30,782	4,912
2006	25,594	1,766	4,253	2,348	857	91	173	1,118	30,877	5,323
2007	26,058	1,594	4,317	2,386	845	77	145	1,276	31,365	5,333
2008	<b>26,576</b>	1,603	<b>4,481</b>	2,403	813	89	158	1,228	<b>32,028</b>	5,323
Change from Last Year	+ 518	+ 9	+ 164	+ 17	- 32	+ 12	+ 13	- 48	+ 663	- 10
	+ 2.0%	+ 0.6%	+ 3.8%	+ 0.7%	- 3.8%	+ 15.6%	+ 9.0%	- 3.8%	+ 2.1%	- 0.2%

Shaded areas indicate record highs.

TABLE 7: FULL-TIME AND PART-TIME STUDENT SHARES BY LEVEL  
SPRING TERMS

Spring Term	Undergraduate		Graduate		Professional		Nondegree		Total	
	Full-Time	Part-Time	Full-Time	Part-Time	Full-Time	Part-Time	Full-Time	Part-Time	Full-Time	Part-Time
1977	92.9%	7.1%	60.8%	39.2%	92.6%	7.4%	15.8%	84.2%	83.2%	16.8%
1978	91.8%	8.2%	57.9%	42.1%	93.9%	6.1%	15.4%	84.6%	81.6%	18.4%
1979	90.5%	9.5%	58.0%	42.0%	93.2%	6.8%	9.9%	90.1%	80.8%	19.2%
1980	91.2%	8.8%	57.6%	42.4%	93.8%	6.2%	10.4%	89.6%	80.6%	19.4%
1981	91.0%	9.0%	56.7%	43.3%	90.6%	9.4%	13.0%	87.0%	80.9%	19.1%
1982	91.1%	8.9%	56.4%	43.6%	91.7%	8.3%	11.4%	88.6%	81.3%	18.7%
1983	91.3%	8.7%	56.9%	43.1%	90.5%	9.5%	12.7%	87.3%	81.5%	18.5%
1984	90.8%	9.2%	59.0%	41.0%	87.7%	12.3%	21.3%	78.7%	81.8%	18.2%
1985	90.8%	9.2%	59.2%	40.8%	86.3%	13.7%	21.1%	78.9%	82.5%	17.5%
1986	91.3%	8.7%	58.4%	41.6%	88.7%	11.3%	16.9%	83.1%	82.3%	17.7%
1987	91.3%	8.7%	56.8%	43.2%	88.2%	11.8%	15.8%	84.2%	82.2%	17.8%
1988	91.6%	8.4%	58.8%	41.2%	89.9%	10.1%	17.3%	82.7%	82.9%	17.1%
1989	91.5%	8.5%	61.2%	38.8%	88.7%	11.3%	19.4%	80.6%	83.3%	16.7%
1990	91.2%	8.8%	62.4%	37.6%	91.9%	8.1%	16.2%	83.8%	83.0%	17.0%
1991	91.5%	8.5%	63.0%	37.0%	92.3%	7.7%	11.5%	88.5%	82.9%	17.1%
1992	91.0%	9.0%	63.0%	37.0%	89.0%	11.0%	11.7%	88.3%	82.5%	17.5%
1993	91.5%	8.5%	62.4%	37.6%	89.0%	11.0%	10.9%	89.1%	82.8%	17.2%
1994	92.3%	7.7%	63.2%	36.8%	86.6%	13.4%	12.5%	87.5%	83.0%	17.0%
1995	92.9%	7.1%	61.8%	38.2%	85.8%	14.2%	12.0%	88.0%	83.3%	16.7%
1996	93.0%	7.0%	61.5%	38.5%	84.1%	15.9%	11.5%	88.5%	83.0%	17.0%
1997	93.2%	6.8%	60.9%	39.1%	84.8%	15.2%	10.3%	89.7%	83.1%	16.9%
1998	93.0%	7.0%	61.3%	38.7%	84.4%	15.6%	12.1%	87.9%	83.7%	16.3%
1999	93.1%	6.9%	61.3%	38.7%	82.5%	17.5%	12.3%	87.7%	84.4%	15.6%
2000	93.6%	6.4%	62.4%	37.6%	84.6%	15.4%	12.8%	87.2%	85.2%	14.8%
2001	93.9%	6.1%	63.4%	36.6%	84.5%	15.5%	12.2%	87.8%	85.6%	14.4%
2002	93.3%	6.7%	62.7%	37.3%	83.0%	17.0%	15.1%	84.9%	85.5%	14.5%
2003	93.2%	6.8%	63.6%	36.4%	83.3%	16.7%	11.8%	88.2%	85.2%	14.8%
2004	93.7%	6.3%	65.1%	34.9%	83.9%	16.1%	11.4%	88.6%	86.2%	13.8%
2005	93.1%	6.9%	65.2%	34.8%	98.3%	1.7%	20.4%	79.6%	86.2%	13.8%
2006	93.5%	6.5%	64.4%	35.6%	90.4%	9.6%	13.4%	86.6%	85.3%	14.7%
2007	94.2%	5.8%	64.4%	35.6%	91.6%	8.4%	10.2%	89.8%	85.5%	14.5%
2008	94.3%	5.7%	65.1%	34.9%	90.1%	9.9%	11.4%	88.6%	85.7%	14.3%

Shaded areas indicate record highs.





Within the undergraduate level, all credit hour loads have increased with the exception of the credit hour load for juniors. The average credit hour loads for freshmen and sophomores are the highest figures on record. Within the graduate level, the credit hour load for doctoral students (7.75) is a new record-high figure, increasing from last spring's 7.67 credit hours.

Students typically take a higher number of courses in the fall (Fall 2007, 13.44) than they do in the spring (Spring 2008, 13.09). The campus credit hour load showed no change in the fall, while showing a slight increase this spring. The increases in credit hour loads in the Fall were replicated in the Spring, at undergraduate and graduate levels.

# GENDER

The number of women attending IU-Bloomington (19,230) shows a record high this year due to a record number of female graduate (3,539) and nondegree (960) students. The number of men (18,121) is also at a record high this year due to the record number of undergraduate (13,869) and graduate (3,345) students. Figure 4 illustrates the trend of female students being the majority on campus and thus more reflective of society. However the increase in enrollment for men (+3.2%) outpaces the increase in enrollment for women (+0.5%).

Despite record high numbers of male and female students, the female share of students (at 51.5%) shows a decrease from last year while the male share of enrollment (48.5%) shows an increase. The male share of undergraduate students shows an increase of 1.0 percentage point to 49.2% and the male share of professional students shows a more substantial increase of 1.7 percentage points to 53.3%. The female share of nondegree students shows a 3.2 percentage point increase (to 69.3%) from last year.

FIGURE 4: ENROLLMENT BY GENDER  
SPRING TERMS

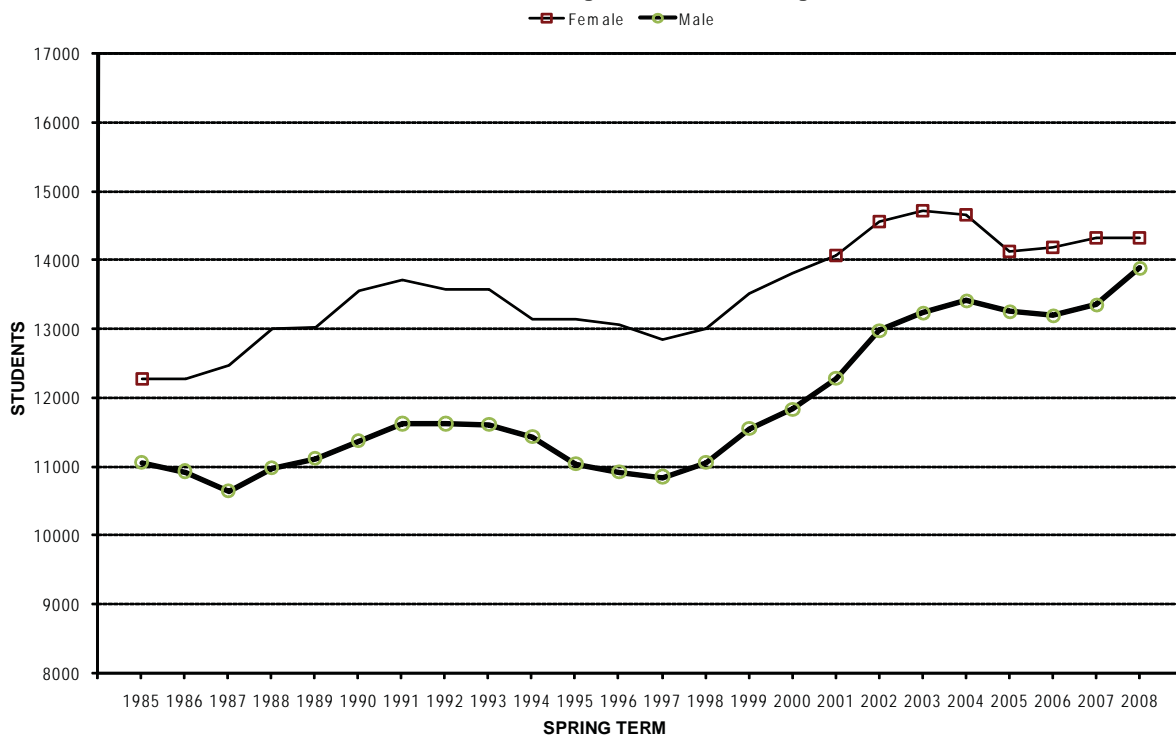




TABLE 11: SHARE BY GENDER AND STUDENT LEVEL  
 SPRING TERMS

Spring Terms	Undergraduate		Graduate		Professional		Nondegree		Total	
	Female	Male	Female	Male	Female	Male	Female	Male	Female	Male
1985	52.6%	47.4%	44.7%	55.3%	36.3%	63.7%	54.5%	45.5%	50.8%	49.2%
1986	52.9%	47.1%	45.8%	54.2%	37.1%	62.9%	55.8%	44.2%	51.3%	48.7%
1987	53.9%	46.1%	47.1%	52.9%	36.0%	64.0%	56.8%	43.2%	52.3%	47.7%
1988	54.2%	45.8%	46.8%	53.2%	36.6%	63.4%	58.4%	41.6%	52.5%	47.5%
1989	53.9%	46.1%	46.4%	53.6%	36.2%	63.8%	55.5%	44.5%	52.1%	47.9%
1990	54.4%	45.6%	47.1%	52.9%	38.8%	61.2%	60.4%	39.6%	52.9%	47.1%
1991	54.1%	45.9%	47.5%	52.5%	39.5%	60.5%	51.5%	48.5%	52.4%	47.6%
1992	53.9%	46.1%	47.4%	52.6%	43.3%	56.7%	53.7%	46.3%	52.4%	47.6%
1993	53.9%	46.1%	47.3%	52.7%	43.3%	56.7%	55.0%	45.0%	52.4%	47.6%
1994	53.5%	46.5%	47.4%	52.6%	45.4%	54.6%	55.9%	44.1%	52.2%	47.8%
1995	54.3%	45.7%	48.8%	51.2%	45.9%	54.1%	56.1%	43.9%	53.1%	46.9%
1996	54.5%	45.5%	48.9%	51.1%	46.3%	53.7%	52.6%	47.4%	53.1%	46.9%
1997	54.2%	45.8%	49.2%	50.8%	46.6%	53.4%	55.1%	44.9%	53.1%	46.9%
1998	54.0%	46.0%	49.7%	50.3%	46.0%	54.0%	53.5%	46.5%	52.9%	47.1%
1999	53.9%	46.1%	49.7%	50.3%	45.7%	54.3%	54.7%	45.3%	52.9%	47.1%
2000	53.9%	46.1%	50.3%	49.7%	42.8%	57.2%	55.7%	44.3%	53.0%	47.0%
2001	53.4%	46.6%	50.3%	49.7%	45.3%	54.7%	54.3%	45.7%	52.7%	47.3%
2002	52.9%	47.1%	49.5%	50.5%	47.9%	52.1%	57.8%	42.2%	52.3%	47.7%
2003	52.7%	47.3%	49.9%	50.1%	48.8%	51.2%	61.1%	38.9%	52.3%	47.7%
2004	52.2%	47.8%	50.4%	49.6%	47.5%	52.5%	63.0%	37.0%	52.1%	47.9%
2005	51.6%	48.4%	50.7%	49.3%	47.9%	52.1%	62.2%	37.8%	51.6%	48.4%
2006	51.8%	48.2%	51.0%	49.0%	46.4%	53.6%	69.0%	31.0%	52.1%	47.9%
2007	51.8%	48.2%	51.2%	48.8%	48.4%	51.6%	66.1%	33.9%	52.2%	47.8%
2008	50.8%	49.2%	51.4%	48.6%	46.7%	53.3%	69.3%	30.7%	51.5%	48.5%

Shaded areas indicate record-high figures.





**TABLE 13: SHARE OF ENROLLMENT BY ETHNIC GROUP  
SPRING TERMS**

Spring Term	African American	Asian American	Hispanic American	Native American	Total U.S. Minority	White American	Non-U.S.	Other American	Refused & Uncoded	Total Unknown	TOTAL
1976	4.2%	0.5%	0.7%	<b>0.3%</b>	5.8%	<b>89.0%</b>	4.1%	n/a	n/a	1.1%	100.0%
1977	4.5%	0.5%	0.8%	0.2%	6.0%	88.4%	4.2%	n/a	n/a	1.4%	100.0%
1978	4.5%	0.6%	0.9%	<b>0.3%</b>	6.2%	87.5%	4.7%	n/a	n/a	1.6%	100.0%
1979	4.6%	0.7%	0.9%	<b>0.3%</b>	6.4%	86.5%	5.3%	n/a	n/a	1.8%	100.0%
1980	4.7%	0.8%	1.0%	<b>0.3%</b>	6.8%	86.1%	5.6%	n/a	n/a	1.6%	100.0%
1981	4.8%	0.8%	1.1%	0.2%	6.9%	85.1%	6.2%	n/a	n/a	1.8%	100.0%
1982	<b>5.1%</b>	0.9%	1.1%	0.2%	7.3%	84.8%	6.2%	n/a	n/a	1.7%	100.0%
1983	4.9%	1.0%	1.2%	0.2%	7.2%	84.3%	6.8%	n/a	n/a	1.7%	100.0%
1984	4.6%	1.1%	1.2%	0.2%	7.1%	85.3%	6.7%	n/a	n/a	1.0%	100.0%
1985	4.2%	1.3%	1.2%	0.2%	6.8%	86.3%	6.1%	n/a	n/a	0.8%	100.0%
1986	3.8%	1.6%	1.2%	0.1%	6.7%	86.7%	5.9%	n/a	n/a	0.7%	100.0%
1987	3.6%	1.7%	1.2%	0.2%	6.7%	86.8%	5.8%	n/a	n/a	0.7%	100.0%
1988	3.5%	1.8%	1.3%	0.1%	6.7%	87.1%	5.6%	n/a	n/a	0.6%	100.0%
1989	3.7%	2.0%	1.3%	0.1%	7.2%	86.7%	5.4%	n/a	n/a	0.7%	100.0%
1990	3.7%	2.1%	1.4%	0.1%	7.4%	86.7%	5.2%	0.6%	0.2%	0.8%	100.0%
1991	3.6%	2.4%	1.6%	0.1%	7.6%	85.9%	5.6%	0.5%	0.3%	0.8%	100.0%
1992	3.8%	2.5%	1.5%	0.2%	8.0%	85.0%	5.8%	0.6%	0.5%	1.2%	100.0%
1993	3.9%	2.6%	1.6%	0.2%	8.3%	84.5%	5.8%	0.7%	0.7%	1.4%	100.0%
1994	3.8%	2.6%	1.7%	0.2%	8.4%	84.0%	6.0%	0.8%	0.9%	1.7%	100.0%
1995	3.9%	2.9%	1.8%	0.2%	8.9%	83.3%	5.9%	0.9%	1.0%	1.9%	100.0%
1996	3.9%	3.1%	2.0%	<b>0.3%</b>	9.2%	82.3%	6.3%	1.0%	1.3%	2.3%	100.0%
1997	3.6%	3.2%	2.0%	0.2%	9.1%	81.5%	6.9%	1.0%	<b>1.4%</b>	<b>2.5%</b>	100.0%
1998	3.7%	3.1%	2.0%	<b>0.3%</b>	9.0%	81.1%	7.4%	1.1%	1.3%	2.4%	100.0%
1999	3.8%	3.1%	2.0%	<b>0.3%</b>	9.2%	81.3%	7.1%	1.2%	1.2%	2.4%	100.0%
2000	3.9%	3.0%	2.0%	<b>0.3%</b>	9.2%	80.9%	7.6%	<b>1.3%</b>	1.0%	2.3%	100.0%
2001	3.8%	3.3%	2.0%	<b>0.3%</b>	9.3%	80.3%	8.3%	<b>1.3%</b>	0.8%	2.1%	100.0%
2002	3.9%	3.1%	2.0%	0.2%	9.2%	80.0%	8.6%	<b>1.3%</b>	0.8%	2.1%	100.0%
2003	3.7%	3.1%	2.1%	0.2%	9.2%	80.3%	8.8%	1.1%	0.5%	1.6%	100.0%
2004	3.8%	3.3%	2.2%	0.2%	9.5%	80.0%	9.1%	0.9%	0.5%	1.5%	100.0%
2005	4.0%	3.3%	2.2%	0.2%	9.7%	80.4%	8.7%	0.0%	1.2%	1.2%	100.0%
2006	4.3%	3.4%	2.3%	0.2%	10.3%	79.9%	8.3%	0.5%	1.0%	1.5%	100.0%
2007	4.3%	3.5%	2.3%	<b>0.3%</b>	10.4%	79.3%	9.0%	0.4%	0.7%	1.2%	100.0%
2008	4.3%	<b>3.6%</b>	<b>2.5%</b>	<b>0.3%</b>	<b>10.7%</b>	78.1%	<b>9.8%</b>	0.3%	1.0%	1.4%	100.0%

Total U.S. Minority includes African American, Asian American, Hispanic American, and Native American.

Total Unknown includes the categories of Other American and Refused and Uncoded.

Shaded areas represent record-high figures.









**TABLE 16: ENROLLMENT BY RESIDENCE CLASSIFICATION AND STUDENT LEVEL  
SPRING TERMS**

Spring	Undergraduate		Graduate		Professional		Nondegree		Total	
	Resident	Nonresident	Resident	Nonresident	Resident	Nonresident	Resident	Nonresident	Resident	Nonresident
1982	16,701	5,847	<b>2,285</b>	3,813	628	271	782	366	20,397	10,297
1983	16,732	6,351	2,147	3,878	<b>629</b>	276	904	338	20,412	10,843
1984	16,651	6,340	2,052	3,815	623	246	989	294	20,315	10,695
1985	16,823	6,493	1,989	3,698	600	249	795	284	20,207	10,724
1986	16,733	6,447	1,971	3,732	594	264	876	290	20,174	10,733
1987	16,566	6,529	1,933	3,739	606	281	784	282	19,889	10,831
1988	17,083	6,879	1,959	3,892	594	295	828	289	20,464	11,355
1989	17,365	6,747	1,925	3,987	579	339	836	315	20,705	11,388
1990	17,795	7,116	1,844	4,047	524	342	893	444	21,056	11,949
1991	18,209	7,103	1,815	4,143	536	344	1,007	493	21,567	12,083
1992	18,264	6,914	1,783	4,310	508	347	933	491	21,488	12,062
1993	18,273	6,900	1,762	4,481	497	355	897	465	21,429	12,201
1994	18,052	6,498	1,833	4,514	512	349	975	547	21,372	11,908
1995	17,734	6,436	1,812	4,578	516	364	844	518	20,906	11,896
1996	17,656	6,314	1,734	4,554	516	359	864	595	20,770	11,822
1997	17,385	6,285	1,634	4,606	520	374	784	<b>607</b>	20,323	11,872
1998	17,519	6,512	1,651	4,516	496	404	724	476	20,390	11,908
1999	18,174	6,874	1,669	4,427	495	396	697	346	21,035	12,043
2000	18,341	7,282	1,637	4,312	464	412	706	399	21,148	12,405
2001	18,582	7,743	1,597	4,339	482	397	703	460	21,364	12,939
2002	<b>19,026</b>	8,482	1,625	4,423	473	401	649	395	21,773	13,701
2003	18,957	8,973	1,736	4,559	477	429	816	334	<b>21,986</b>	14,295
2004	18,821	9,224	1,767	4,786	463	444	656	312	21,707	14,766
2005	18,327	9,027	1,859	4,649	453	462	657	260	21,296	14,398
2006	18,346	9,014	1,902	4,699	438	510	917	374	21,603	14,597
2007	18,191	9,461	1,862	4,841	407	<b>515</b>	1,000	421	21,460	15,238
2008	18,032	<b>10,147</b>	1,791	<b>5,093</b>	393	509	<b>1,025</b>	361	21,241	<b>16,110</b>

**TABLE 17: SHARE OF ENROLLMENT BY RESIDENCE CLASSIFICATION AND STUDENT LEVEL  
SPRING TERMS**

Spring	Undergraduate		Graduate		Professional		Nondegree		Total	
	Resident	Nonresident	Resident	Nonresident	Resident	Nonresident	Resident	Nonresident	Resident	Nonresident
1982	<b>74.1%</b>	25.9%	<b>37.5%</b>	62.5%	69.9%	30.1%	68.1%	31.9%	<b>66.5%</b>	33.5%
1983	72.5%	27.5%	35.6%	64.4%	69.5%	30.5%	72.8%	27.2%	65.3%	34.7%
1984	72.4%	27.6%	35.0%	65.0%	<b>71.7%</b>	28.3%	<b>77.1%</b>	22.9%	65.5%	34.5%
1985	72.2%	27.8%	35.0%	65.0%	70.7%	29.3%	73.7%	26.3%	65.3%	34.7%
1986	72.2%	27.8%	34.6%	65.4%	69.2%	30.8%	75.1%	24.9%	65.3%	34.7%
1987	71.7%	28.3%	34.1%	65.9%	68.3%	31.7%	73.5%	26.5%	64.7%	35.3%
1988	71.3%	28.7%	33.5%	66.5%	66.8%	33.2%	74.1%	25.9%	64.3%	35.7%
1989	72.0%	28.0%	32.6%	67.4%	63.1%	36.9%	72.6%	27.4%	64.5%	35.5%
1990	71.4%	28.6%	31.3%	68.7%	60.5%	39.5%	66.8%	33.2%	63.8%	36.2%
1991	71.9%	28.1%	30.5%	69.5%	60.9%	39.1%	67.1%	32.9%	64.1%	35.9%
1992	72.5%	27.5%	29.3%	70.7%	59.4%	40.6%	65.5%	34.5%	64.0%	36.0%
1993	72.6%	27.4%	28.2%	71.8%	58.3%	41.7%	65.9%	34.1%	63.7%	36.3%
1994	73.5%	26.5%	28.9%	71.1%	59.5%	40.5%	64.1%	35.9%	64.2%	35.8%
1995	73.4%	26.6%	28.4%	71.6%	58.6%	41.4%	62.0%	38.0%	63.7%	36.3%
1996	73.7%	26.3%	27.6%	72.4%	59.0%	41.0%	59.2%	40.8%	63.7%	36.3%
1997	73.4%	26.6%	26.2%	73.8%	58.2%	41.8%	56.4%	<b>43.6%</b>	63.1%	36.9%
1998	72.9%	27.1%	26.8%	73.2%	55.1%	44.9%	60.3%	39.7%	63.1%	36.9%
1999	72.6%	27.4%	27.4%	72.6%	55.6%	44.4%	66.8%	33.2%	63.6%	36.4%
2000	71.6%	28.4%	27.5%	72.5%	53.0%	47.0%	63.9%	36.1%	63.0%	37.0%
2001	70.6%	29.4%	26.9%	73.1%	54.8%	45.2%	60.4%	39.6%	62.3%	37.7%
2002	69.2%	30.8%	26.9%	73.1%	54.1%	45.9%	62.2%	37.8%	61.4%	38.6%
2003	67.9%	32.1%	27.6%	72.4%	52.6%	47.4%	71.0%	29.0%	60.6%	39.4%
2004	67.1%	32.9%	27.0%	73.0%	51.0%	49.0%	67.8%	32.2%	59.5%	40.5%
2005	67.0%	33.0%	28.6%	71.4%	49.5%	50.5%	71.6%	28.4%	59.7%	40.3%
2006	67.1%	32.9%	28.8%	71.2%	46.2%	53.8%	71.0%	29.0%	59.7%	40.3%
2007	65.8%	34.2%	27.8%	72.2%	44.1%	55.9%	70.4%	29.6%	58.5%	41.5%
2008	64.0%	<b>36.0%</b>	26.0%	<b>74.0%</b>	43.6%	<b>56.4%</b>	74.0%	26.0%	56.9%	<b>43.1%</b>

Shaded areas indicate record highs.





TABLE 19: ENROLLMENT BY STUDENT CLASS AND LEVEL WITHIN STUDENT SCHOOL (CONTINUED)  
 SPRING TERMS

Student School	Spring Term		Change from 2007 to 2008	
	2007	2008	Number	Percent
<b>GRADUATE SCHOOL</b>				
Masters	870	848	- 22	- 2.5%
Doctorate	2,888	2,973	+ 85	+ 2.9%
Graduate	3,758	3,821	+ 63	+ 1.7%
Nondegree	121	139	+ 18	+ 14.9%
Total	3,879	3,960	+ 81	+ 2.1%
<b>HPER</b>				
Freshman	5	7	+ 2	+ 40.0%
Sophomore	354	401	+ 47	+ 13.3%
Junior	520	636	+ 116	+ 22.3%
Senior	892	875	- 17	- 1.9%
Undergraduate	1,771	1,919	+ 148	+ 8.4%
Masters	207	225	+ 18	+ 8.7%
Graduate	207	225	+ 18	+ 8.7%
Nondegree	22	14	- 8	- 36.4%
Total	2,000	2,158	+ 158	+ 7.9%
<b>INFORMATICS</b>				
Freshman	9	6	- 3	- 33.3%
Sophomore	44	61	+ 17	+ 38.6%
Junior	93	102	+ 9	+ 9.7%
Senior	158	158	0	0.0%
Undergraduate	304	327	+ 23	+ 7.6%
Graduate	87	102	+ 15	+ 17.2%
Nondegree	0	2	+ 2	-----
Total	391	431	+ 40	+ 10.2%
<b>JOURNALISM</b>				
Freshman	24	19	- 5	- 20.8%
Sophomore	192	195	+ 3	+ 1.6%
Junior	182	249	+ 67	+ 36.8%
Senior	301	268	- 33	- 11.0%
Undergraduate	699	731	+ 32	+ 4.6%
Total	699	731	+ 32	+ 4.6%
<b>LABOR STUDIES</b>				
Freshman	1	0	- 1	- 100.0%
Sophomore	1	0	- 1	- 100.0%
Junior	1	0	- 1	- 100.0%
Senior	4	2	- 2	- 50.0%
Undergraduate	7	2	- 5	- 71.4%
Total	7	2	- 5	- 71.4%
<b>LAW</b>				
Masters	49	64	+ 15	+ 30.6%
Doctorate	30	30	0	0.0%
Graduate	79	94	+ 15	+ 19.0%
First Year	205	205	0	0.0%
Second Year	207	184	- 23	- 11.1%
Third Year	196	206	+ 10	+ 5.1%
Professional	608	595	- 13	- 2.1%
Nondegree	5	4	- 1	- 20.0%
Total	692	693	+ 1	+ 0.1%
<b>LIBRARY &amp; INFO. SCI.</b>				
Masters	268	275	+ 7	+ 2.6%
Doctorate	3	5	+ 2	+ 66.7%
Graduate	271	280	+ 9	+ 3.3%
Nondegree	15	21	+ 6	+ 40.0%
Total	286	301	+ 15	+ 5.2%
<b>MUSIC</b>				
Freshman	107	107	0	0.0%
Sophomore	125	155	+ 30	+ 24.0%
Junior	146	139	- 7	- 4.8%
Senior	317	323	+ 6	+ 1.9%
Undergraduate	695	724	+ 29	+ 4.2%
Masters	463	502	+ 39	+ 8.4%
Doctorate	313	312	- 1	- 0.3%
Graduate	776	814	+ 38	+ 4.9%
Nondegree	13	8	- 5	- 38.5%
Total	1,484	1,546	+ 62	+ 4.2%





# CREDIT HOUR LOAD (SCHOOL)

Table 20 shows the average credit hour load by student school for this year and last year. Arts and Sciences, Business, Education, Graduate School, HPER, Music, Social Work, and SPEA are reporting increases in credit hour loads this year. Optometry has the highest credit hour load (16.75) among the schools followed by University Division (14.56).

TABLE 20: AVERAGE CREDIT HOUR LOAD BY STUDENT SCHOOL  
SPRING TERMS

Student School	Spring 2007	Spring 2008	Change in Credit Hours
Arts and Sciences	13.68	13.81	+ 0.13
Business	14.42	14.54	+ 0.12
Continuing Studies	10.20	10.02	- 0.18
Education	9.18	9.50	+ 0.32
Graduate School	8.06	8.11	+ 0.05
HPER	13.70	13.71	+ 0.01
Informatics	12.70	12.43	- 0.27
Journalism	14.50	14.30	- 0.20
Labor Studies	9.43	7.50	- 1.93
Law	13.46	13.42	- 0.04
Library and Info Science	7.94	7.88	- 0.06
Music	12.75	13.04	+ 0.29
Nursing	14.11	14.11	- 0.00
Optometry	16.89	16.75	- 0.14
Social Work	14.25	14.29	+ 0.04
SPEA	13.41	13.49	+ 0.08
University Division	14.61	14.56	- 0.05
TOTAL	13.04	13.08	+ 0.04

Students enrolled in dual careers (i.e., MBA/JD students) are counted under each school. Thus, there will be two credit hour loads calculated for a dually enrolled student based on 1.) the number of credit hours the student is taking as a Business student and 2.) the number of credit hours taken as a Law student.

# COURSE INFORMATION

## CREDIT HOURS AND COURSE ENROLLMENTS

This year, credit hours show a 2.1% increase (+10,032.0 credit hours), reaching 488,815.5, the highest credit hour figure on record. This is to be expected as campus enrollment is a new record-high figure this year. This increase is due to increases in both undergraduate and graduate credit hours, as both report record-high figures this spring. Credit hours at the undergraduate level show a slightly larger (+2.2%) increase compared to those at the graduate level (+1.7% increase). When comparing credit hours for spring to those for fall, undergraduate credit hours for Fall 2007 increased 1.9% compared to the 2.1% increase this spring. As in the spring, credit hours at the undergraduate and graduate levels both increased to new record-high figures in the fall. Table 21 details historical credit hour information beginning with Spring 1974, as well as the change in credit hours from last year.

TABLE 21: CREDIT HOURS BY COURSE LEVEL  
SPRING TERMS

Spring Terms	100-level	200-level	300-level	400-level	Total Undergraduate	Graduate	Total
1974	121,389.5	68,020.0	70,676.0	44,876.0	304,961.5	60,986.4	365,947.9
1975	125,179.0	70,381.0	71,656.0	43,890.9	311,106.9	62,664.8	373,771.7
1976	135,590.0	72,597.1	72,050.5	46,755.3	326,992.9	65,672.6	392,665.5
1977	137,246.0	72,959.7	74,573.0	45,693.0	330,471.7	62,230.5	392,702.2
1978	128,480.0	71,614.0	73,013.0	44,087.1	317,194.1	59,988.4	377,182.5
1979	122,403.0	69,946.0	73,154.0	42,903.4	308,406.4	55,165.6	363,572.0
1980	126,651.0	71,857.5	70,663.5	45,589.5	314,761.5	58,412.0	373,173.5
1981	126,068.0	74,560.5	71,578.5	43,244.0	315,451.0	55,328.2	370,779.2
1982	130,215.0	77,585.0	70,881.0	42,964.0	321,645.0	54,697.5	376,342.5
1983	130,056.0	83,687.0	72,870.5	43,261.0	329,874.5	54,287.5	384,162.0
1984	128,192.0	82,783.0	75,584.0	42,071.5	328,630.5	53,743.5	382,374.0
1985	129,793.0	81,021.0	77,876.0	42,807.0	331,497.0	52,804.5	384,301.5
1986	130,056.0	77,524.0	78,373.5	43,218.0	329,171.5	53,148.1	382,319.6
1987	133,238.0	75,038.0	77,313.5	42,629.0	328,218.5	52,724.0	380,942.5
1988	136,504.0	79,194.0	81,069.0	42,608.0	339,375.0	57,937.5	397,312.5
1989	135,080.0	80,542.0	80,745.0	44,269.0	340,636.0	59,121.0	399,757.0
1990	<b>141,729.0</b>	81,167.0	82,335.5	45,826.0	351,057.5	60,349.7	411,407.2
1991	132,367.0	91,004.0	85,061.5	48,179.0	356,611.5	60,453.0	417,064.5
1992	136,366.0	93,545.0	90,547.0	46,859.0	367,317.0	60,540.5	427,857.5
1993	136,058.0	87,855.0	94,938.0	48,761.0	367,612.0	61,702.0	429,314.0
1994	134,538.0	88,422.0	90,940.5	46,095.0	359,995.5	66,971.5	426,967.0
1995	132,339.0	88,619.0	87,353.0	47,004.0	355,315.0	66,716.5	422,031.5
1996	125,479.0	91,727.0	87,746.0	47,632.0	352,584.0	66,349.5	418,933.5
1997	124,457.0	91,363.0	85,001.0	48,423.5	349,244.5	65,763.0	415,007.5
1998	124,256.5	94,345.0	85,599.0	47,804.5	352,005.0	66,215.5	418,220.5
1999	132,295.0	93,901.0	90,461.5	49,695.0	366,352.5	65,316.5	431,669.0
2000	135,319.0	96,151.0	92,359.0	51,243.5	375,072.5	65,600.0	440,672.5
2001	140,387.5	98,878.0	94,093.5	52,760.0	386,119.0	65,278.0	451,397.0
2002	137,064.0	105,607.0	103,292.5	54,618.5	400,582.0	66,490.5	467,072.5
2003	139,118.0	108,545.0	105,139.5	53,711.5	406,514.0	69,450.5	475,964.5
2004	141,111.0	105,272.0	106,839.5	<b>57,202.5</b>	410,425.0	72,233.5	482,658.5
2005	130,578.0	103,780.0	108,037.5	55,454.5	397,850.0	70,782.5	468,632.5
2006	131,079.5	101,140.0	<b>109,409.5</b>	56,853.5	398,482.5	74,818.5	473,301.0
2007	137,074.5	105,983.5	105,816.5	55,720.5	404,595.0	74,188.5	478,783.5
2008	135,153.5	<b>114,528.0</b>	108,550.5	55,102.0	<b>413,334.0</b>	<b>75,481.5</b>	<b>488,815.5</b>

Shaded areas indicate record highs.

This year, 84.6% of the total campus credit hours are from undergraduate courses, a 0.1 percentage point increase from last year.

Table 22 shows historical course enrollments by course level from Spring 1974 as well as the change from last year. Course enrollments show a +2.5% increase (+4,227 course enrollments) from last year, due to increases at both the undergraduate and graduate levels. This spring, course enrollments mirror the credit hour increases, both undergraduate and graduate course enrollments are record-high figures.

The change in course enrollments within the undergraduate level deviates slightly from the change in credit hours. Course enrollments at the 400- level show a small increase, while credit hours at the 400-level show a decrease.

TABLE 22: COURSE ENROLLMENTS BY COURSE LEVEL  
SPRING TERMS

Spring Term	100-level	200-level	300-level	400-level	Total Undergraduate	Graduate	Total
1974	42,100	22,360	24,351	13,657	102,468	20,910	123,378
1975	44,874	22,928	24,732	13,881	106,415	21,738	128,153
1976	49,314	23,679	24,885	14,490	112,368	22,748	135,116
1977	49,696	23,707	25,662	14,115	113,180	21,425	134,605
1978	45,932	23,905	25,243	13,830	108,910	21,314	130,224
1979	43,906	23,508	25,158	13,791	106,363	19,784	126,147
1980	45,169	24,264	24,358	14,910	108,701	20,209	128,910
1981	46,156	25,315	24,667	14,340	110,478	19,076	129,554
1982	47,374	25,984	24,476	14,371	112,205	18,543	130,748
1983	46,652	27,484	25,119	14,426	113,681	18,546	132,227
1984	45,688	27,368	26,004	14,102	113,162	18,321	131,483
1985	46,108	26,967	26,860	14,348	114,283	18,035	132,318
1986	46,609	25,937	26,990	14,229	113,765	18,199	131,964
1987	47,127	25,184	26,532	13,772	112,615	17,990	130,605
1988	48,133	26,623	27,829	13,789	116,374	19,047	135,421
1989	47,781	26,936	27,667	14,088	116,472	18,838	135,310
1990	49,909	26,954	28,069	14,450	119,382	19,276	138,658
1991	46,753	30,223	28,939	15,097	121,012	19,469	140,481
1992	49,459	31,061	30,863	14,858	126,241	19,351	145,592
1993	50,001	29,045	32,340	15,314	126,700	19,860	146,560
1994	49,861	29,399	30,988	14,152	124,400	21,471	145,871
1995	48,617	29,824	29,810	14,292	122,543	21,859	144,402
1996	46,404	30,795	31,719	15,113	124,031	21,762	145,793
1997	45,924	31,021	31,060	15,312	123,317	21,909	145,226
1998	46,024	32,043	31,773	15,090	124,930	22,137	147,067
1999	49,094	31,792	33,291	15,479	129,656	21,916	151,572
2000	50,422	32,494	33,880	15,658	132,454	22,681	155,135
2001	<b>52,172</b>	33,478	34,266	16,493	136,409	24,179	160,588
2002	51,174	35,803	37,520	17,124	141,621	24,268	165,889
2003	51,441	<b>36,784</b>	37,830	16,908	142,963	25,280	168,243
2004	51,546	35,996	<b>38,300</b>	<b>17,734</b>	<b>143,576</b>	26,083	<b>169,659</b>
2005	47,799	35,601	37,020	17,223	<b>137,643</b>	25,880	<b>163,523</b>
2006	48,550	34,679	37,757	17,601	138,587	<b>27,243</b>	165,830
2007	50,493	36,416	36,161	17,397	140,467	26,889	167,356
2008	49,663	<b>40,070</b>	37,125	17,451	<b>144,309</b>	<b>27,274</b>	<b>171,583</b>
Change from last year	- 830	+ 3,654	+ 964	+ 54	+ 3,842	+ 385	+ 4,227
	- 1.6%	+ 10.0%	+ 2.7%	+ 0.3%	+ 2.7%	+ 1.4%	+ 2.5%

Shaded areas indicate record highs.

When comparing course enrollments at the undergraduate, graduate, and campus levels for Spring 2008 to Fall 2007, the course enrollment activity for spring mirrors that of fall, only undergraduates did not attain a new record in the fall.

Net credit hours and course enrollments by course school are displayed in the following table. Course enrollments and credit hours for all courses are available on the web at <http://www.indiana.edu/~registra/coursesectn/>.

TABLE 23: CREDIT HOURS AND COURSE ENROLLMENTS BY COURSE SCHOOL AND COURSE LEVEL  
SPRING TERMS

	Credit Hours				Course Enrollments			
	2007	2008	Change	Percent Change	2007	2008	Change	Percent Change
<b>Arts and Sciences</b>								
Undergraduate	236,577.5	240,399.5	+ 3,822.0	+ 1.6%	77,155	78,009	+ 854	+ 1.1%
Graduate	21,431.5	22,534.5	+ 1,103.0	+ 5.1%	5,890	6,225	+ 335	+ 5.7%
Total	258,009.0	262,934.0	+ 4,925.0	+ 1.9%	83,045	84,234	+ 1,189	+ 1.4%
<b>Business</b>								
Undergraduate	56,023.5	58,346.0	+ 2,322.5	+ 4.1%	20,986	23,230	+ 2,244	+ 10.7%
Graduate	9,101.5	9,064.0	- 37.5	- 0.4%	5,186	5,255	+ 69	+ 1.3%
Total	65,125.0	67,410.0	+ 2,285.0	+ 3.5%	26,172	28,485	+ 2,313	+ 8.8%
<b>Continuing Studies</b>								
Undergraduate	9.0	0.0	- 9.0	- 100.0%	3	0	- 3	- 100.0%
Total	9.0	0.0	- 9.0	- 100.0%	3	0	- 3	- 100.0%
<b>Education</b>								
Undergraduate	19,979.5	18,982.0	- 997.5	- 5.0%	6,715	6,286	- 429	- 6.4%
Graduate	9,903.0	9,778.0	- 125.0	- 1.3%	3,246	3,196	- 50	- 1.5%
Total	29,882.5	28,760.0	- 1,122.5	- 3.8%	9,961	9,482	- 479	- 4.8%
<b>Graduate School</b>								
Undergraduate	0.0	0.0	0.0	-----	2	0	- 2	- 100.0%
Graduate	197.0	124.0	- 73.0	- 37.1%	61	54	- 7	- 11.5%
Total	197.0	124.0	- 73.0	- 37.1%	63	54	- 9	- 14.3%
<b>HPER</b>								
Undergraduate	37,765.0	37,284.0	- 481.0	- 1.3%	16,042	15,757	- 285	- 1.8%
Graduate	2,649.0	2,891.0	+ 242.0	+ 9.1%	832	921	+ 89	+ 10.7%
Total	40,414.0	40,175.0	- 239.0	- 0.6%	16,874	16,678	- 196	- 1.2%
<b>Informatics</b>								
Undergraduate	6,114.5	6,298.5	+ 184.0	+ 3.0%	1,863	2,005	+ 142	+ 7.6%
Graduate	2,302.0	2,106.5	- 195.5	- 8.5%	671	609	- 62	- 9.2%
Total	8,416.5	8,405.0	- 11.5	- 0.1%	2,534	2,614	+ 80	+ 3.2%
<b>Journalism</b>								
Undergraduate	5,937.0	6,572.0	+ 635.0	+ 10.7%	2,159	2,381	+ 222	+ 10.3%
Graduate	382.0	527.0	+ 145.0	+ 38.0%	125	169	+ 44	+ 35.2%
Total	6,319.0	7,099.0	+ 780.0	+ 12.3%	2,284	2,550	+ 266	+ 11.6%
<b>Labor Studies</b>								
Undergraduate	754.0	603.0	- 151.0	- 20.0%	260	205	- 55	- 21.2%
Graduate	0.0	0.0	0.0	-----	0	0	0	-----
Total	754.0	603.0	- 151.0	- 20.0%	260	205	- 55	- 21.2%
<b>Law</b>								
Graduate	9,286.0	9,340.0	+ 54.0	+ 0.6%	3,260	3,336	+ 76	+ 2.3%
Total	9,286.0	9,340.0	+ 54.0	+ 0.6%	3,260	3,336	+ 76	+ 2.3%

Undergraduate course level is defined as 0-499 level courses while Graduate is defined as 500+.

TABLE 23: CREDIT HOURS AND COURSE ENROLLMENTS BY COURSE SCHOOL AND COURSE LEVEL (CONTINUED)  
SPRING TERMS

	Credit Hours				Course Enrollments			
	2007	2008	Change	Percent Change	2007	2008	Change	Percent Change
<b>Library &amp; Info Science</b>								
Undergraduate	122.0	110.0	- 12.0	- 9.8%	51	46	- 5	- 9.8%
Graduate	2,314.0	2,463.5	+ 149.5	+ 6.5%	778	826	+ 48	+ 6.2%
Total	2,436.0	2,573.5	+ 137.5	+ 5.6%	829	872	+ 43	+ 5.2%
<b>Medical Sciences</b>								
Undergraduate	4,556.0	4,744.0	+ 188.0	+ 4.1%	1,022	1,061	+ 39	+ 3.8%
Graduate	194.0	98.0	- 96.0	- 49.5%	48	22	- 26	- 54.2%
Total	4,750.0	4,842.0	+ 92.0	+ 1.9%	1,070	1,083	+ 13	+ 1.2%
<b>Military Science</b>								
Undergraduate	339.0	372.0	+ 33.0	+ 9.7%	143	159	+ 16	+ 11.2%
Total	339.0	372.0	+ 33.0	+ 9.7%	143	159	+ 16	+ 11.2%
<b>Music</b>								
Undergraduate	17,463.0	18,371.0	+ 908.0	+ 5.2%	7,453	7,755	+ 302	+ 4.1%
Graduate	6,360.5	6,616.0	+ 255.5	+ 4.0%	3,335	3,466	+ 131	+ 3.9%
Total	23,823.5	24,987.0	+ 1,163.5	+ 4.9%	10,788	11,221	+ 433	+ 4.0%
<b>Nursing</b>								
Undergraduate	1,805.0	1,816.0	+ 11.0	+ 0.6%	690	681	- 9	- 1.3%
Total	1,805.0	1,816.0	+ 11.0	+ 0.6%	690	681	- 9	- 1.3%
<b>Optometry</b>								
Undergraduate	313.0	207.0	- 106.0	- 33.9%	85	57	- 28	- 32.9%
Graduate	5,512.0	5,343.0	- 169.0	- 3.1%	1,950	1,676	- 274	- 14.1%
Total	5,825.0	5,550.0	- 275.0	- 4.7%	2,035	1,733	- 302	- 14.8%
<b>SPEA</b>								
Undergraduate	15,341.0	17,845.0	+ 2,504.0	+ 16.3%	5,339	6,215	+ 876	+ 16.4%
Graduate	4,556.0	4,596.0	+ 40.0	+ 0.9%	1,507	1,519	+ 12	+ 0.8%
Total	19,897.0	22,441.0	+ 2,544.0	+ 12.8%	6,846	7,734	+ 888	+ 13.0%
<b>Social Work</b>								
Undergraduate	1,496.0	1,384.0	- 112.0	- 7.5%	499	462	- 37	- 7.4%
Total	1,496.0	1,384.0	- 112.0	- 7.5%	499	462	- 37	- 7.4%
<b>TOTAL</b>								
Undergraduate	404,595.0	413,334.0	+ 8,739.0	+ 2.2%	140,467	144,309	+ 3,842	+ 2.7%
Graduate	74,188.5	75,481.5	+ 1,293.0	+ 1.7%	26,889	27,274	+ 385	+ 1.4%
<b>TOTAL</b>	478,783.5	488,815.5	+ 10,032.0	+ 2.1%	167,356	171,583	+ 4,227	+ 2.5%

Undergraduate course level is defined as 0-499 level courses while Graduate is defined as 500+.

Journalism, Medical Sciences, and SPEA show record-high numbers of credit hours this year. The following schools also show credit hour increases from last year: Arts and Sciences, Business, Law, Library and Information Science, Military Sciences, Music, and Nursing.

In general, course school credit hour changes for Fall 2007 are comparable to Spring 2008. The exceptions are Library and Information Science who reported a decrease in the number of credit hours for Fall, while increasing for the Spring term, and HPER who reported an increase in the Fall while decreasing for the Spring term.

Usually, course enrollments mirror credit hour activity within the schools. For most schools this year, this is indeed true. However, credit hours in Informatics show a decrease while the course enrollments show an increase, and credit hours in Nursing show an increase while the course enrollments show a decrease.

Credit hours by student class and level are shown in Table 24. Credit hours taken by undergraduate, graduate, and nondegree students show increases this year. Credit hours taken by sophomores and juniors are showing record-high figures this year. Credit hours taken by doctoral students show a record-high figure as well.

TABLE 24: CREDIT HOURS AND SHARE BY STUDENT CLASS AND LEVEL  
SPRING TERMS

	2007	2008	Change	Percent Change
Freshman	92,080.0 23.0%	88,884.0 21.8%	-3,196.0	- 3.5%
Sophomore	100,422.5 25.1%	107,479.5 26.3%	+7,057.0	+ 7.0%
Junior	84,122.5 21.0%	94,045.5 23.0%	+ 9,923.0	+ 11.8%
Senior	123,661.5 30.9%	118,235.5 28.9%	- 5,426.0	- 4.4%
Undergraduate Total	400,286.5 83.6%	408,644.5 83.6%	+8,358.0	+ 2.1%
Masters	33,361.0 56.4%	34,302.5 56.2%	+ 941.5	+ 2.8%
Doctoral	25,828.5 43.6%	26,758.5 43.8%	+ 930.0	+ 3.6%
Graduate Total	59,189.5 12.4%	61,061.0 12.5%	+ 1,871.5	+ 3.2%
Professional Total	13,809.0 2.9%	13,477.5 2.8%	- 331.5	- 2.4%
High School	107.0 1.9%	120.5 2.1%	+ 13.5	+ 12.6%
Special Undergraduate	2,309.5 42.0%	2,358.5 41.9%	+ 49.0	+ 2.1%
Special Graduate	3,082.0 56.1%	3,153.5 56.0%	+ 71.5	+ 2.3%
Nondegree Total	5,498.5 1.1%	5,632.5 1.2%	+ 134.0	+ 2.4%
TOTAL	478,783.5	488,815.5	+10,032.0	+ 2.1%

# G901 ENROLLMENTS

If all course requirements have been completed, candidates may enroll in G901, Dissertation Research, for up to six terms. This course carries a value of six credit hours. G901 was first introduced in 1987. A flat fee of \$150 is assessed for this special course. The following table shows G901 enrollments by course school and department this year and last year. G901 enrollments show a 5.5% increase over last year. Only Business, Informatics, and Library and Information Science show lower G901 enrollments this year.

TABLE 25: G901 ENROLLMENTS BY COURSE SCHOOL AND DEPARTMENT  
SPRING TERMS

Course School/ Department	G901 Enrollments		Course School/ Department	G901 Enrollments	
	Spring 2007	Spring 2008		Spring 2007	Spring 2008
Arts and Sciences			Arts and Sciences (Cont.)		
American Studies	1	0	Neurosciences	5	3
Anthropology	15	21	Philosophy	13	11
Astronomy	8	7	Physics	22	23
Biochemistry	8	7	Political Science	18	16
Biology	47	41	Psychology & Brain Sciences	16	13
Central Eurasian Studies	7	7	Religious Studies	4	6
Chemistry	53	61	Slavic Languages & Lit	1	2
Classical Studies	4	4	Sociology	16	17
Communication & Culture	17	26	Spanish & Portuguese	8	9
Comparative Literature	4	8	Speech & Hearing Sci.	2	3
Criminal Justice	8	11	Telecommunications	17	18
East Asian Language & Cultures	2	3	Theater & Drama	0	1
Economics	17	18	Arts and Sciences Total	502	524
English	41	54	Business	18	17
Fine Arts	8	3	Education	124	143
Folklore	20	22	HPER	16	17
French & Italian	21	24	Informatics	37	25
Geography	4	1	Journalism	5	7
Geological Sciences	11	10	Library & Information Science	4	3
Germanic Studies	2	1	Medical Sciences	6	6
History	37	29	Music	70	80
History & Phil of Sci.	6	5	Optometry	3	5
Linguistics	11	12	SPEA	33	35
Mathematics	25	24	TOTAL	818	863
Near East Language & Cultures	3	3	TOTAL CREDIT HOURS	4,908	5,178









FIGURE 7: GPA COURSE GRADES  
SPRING TERMS

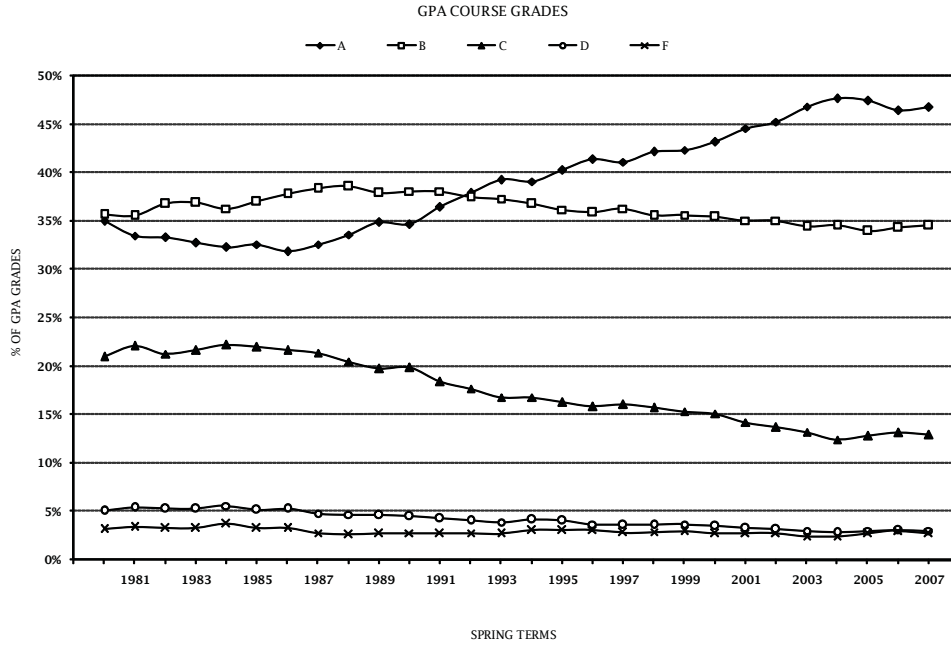


Table 28 provides the distribution of **GPA grades** and Table 29 shows the distribution of **all grades** from Spring 1980 to the present.

TABLE 28: HISTORICAL GPA COURSE GRADE DISTRIBUTION  
SPRING TERMS

Spring Terms	Percentage of GPA Grades					Average	Percent Majors	Total GPA Grades
	A	B	C	D	F	Course Grade		
1980	35.0%	35.7%	21.0%	5.1%	3.2%	2.93		112,137
1981	33.5%	35.6%	22.1%	5.4%	3.4%	2.89		112,207
1982	33.3%	36.8%	21.3%	5.3%	3.3%	2.90		113,867
1983	32.8%	36.9%	21.7%	5.3%	3.3%	2.89		116,641
1984	32.3%	36.3%	22.2%	5.6%	3.7%	2.87		116,113
1985	32.6%	37.0%	22.0%	5.2%	3.3%	2.89		117,312
1986	31.9%	37.8%	21.7%	5.3%	3.3%	2.88		117,024
1987	32.6%	38.4%	21.4%	4.8%	2.8%	2.92		115,840
1988	33.6%	38.6%	20.5%	4.7%	2.6%	2.94		120,682
1989	34.9%	37.9%	19.8%	4.6%	2.7%	2.96		119,410
1990	34.7%	38.1%	19.9%	4.5%	2.8%	2.96		121,675
1991	36.5%	38.1%	18.4%	4.3%	2.7%	3.00		124,328
1992	37.9%	37.5%	17.7%	4.1%	2.8%	3.02		127,818
1993	39.3%	37.3%	16.8%	3.9%	2.7%	3.05		128,196
1994	39.1%	36.8%	16.8%	4.2%	3.1%	3.03		127,145
1995	40.3%	36.2%	16.3%	4.1%	3.1%	3.05		126,389
1996	41.4%	35.9%	15.9%	3.7%	3.1%	3.07	37%	126,648
1997	41.1%	36.3%	16.1%	3.6%	2.8%	3.07	38%	125,548
1998	42.2%	35.6%	15.7%	3.6%	2.9%	3.08	39%	128,129
1999	42.3%	35.6%	15.3%	3.7%	3.0%	3.08	38%	132,778
2000	43.2%	35.4%	15.1%	3.5%	2.8%	3.10	38%	136,181
2001	44.6%	35.1%	14.2%	3.3%	2.8%	3.13	39%	142,024
2002	45.3%	35.1%	13.7%	3.1%	2.8%	3.14	38%	147,809
2003	46.9%	34.5%	13.2%	3.0%	2.5%	3.18	40%	150,940
2004	47.7%	34.6%	12.4%	2.9%	2.5%	3.20	41%	151,756
2005	47.5%	34.0%	12.8%	3.0%	2.7%	3.18	48%	148,606
2006	46.5%	34.3%	13.1%	3.1%	3.0%	3.16	43%	149,509
2007	46.8%	34.6%	12.9%	3.0%	2.7%	3.18	42%	151,398

Beginning in 1996, a slightly different methodology was used. Percentage differences are negligible.

TABLE 29: HISTORICAL TOTAL COURSE GRADES  
SPRING TERMS

Spring Terms	Percentage of Total Grades										Total Grades
	A	B	C	D	F	S & P Grades	I & R Grades	W Grades	WX Grades	Other Non GPA Grades	
1980	27.8%	28.4%	16.7%	4.1%	2.5%	3.0%	3.9%	4.2%	5.3%	2.1%	140,984
1981	26.2%	27.8%	17.3%	4.2%	2.7%	3.9%	3.7%	4.8%	5.5%	1.7%	143,557
1982	26.3%	29.1%	16.9%	4.2%	2.6%	3.9%	4.0%	4.2%	5.4%	1.2%	143,758
1983	26.3%	29.5%	17.4%	4.2%	2.7%	3.9%	3.9%	3.9%	5.5%	0.7%	145,571
1984	24.7%	27.7%	16.9%	4.3%	2.8%	3.7%	3.5%	4.4%	9.0%	1.0%	151,865
1985	24.6%	27.9%	16.6%	3.9%	2.5%	3.7%	3.4%	4.0%	10.5%	0.6%	155,461
1986	23.9%	28.3%	16.2%	4.0%	2.5%	3.7%	3.4%	3.4%	11.3%	0.9%	156,301
1987	24.3%	28.7%	16.0%	3.6%	2.1%	3.8%	3.2%	3.5%	11.5%	1.1%	155,076
1988	25.5%	29.3%	15.6%	3.6%	2.0%	3.9%	3.1%	3.3%	10.7%	0.7%	158,807
1989	26.0%	28.3%	14.8%	3.4%	2.0%	4.0%	3.1%	3.7%	11.3%	1.2%	160,302
1990	25.8%	28.2%	14.8%	3.3%	2.1%	4.1%	3.1%	4.3%	10.6%	1.5%	164,054
1991	27.5%	28.7%	13.8%	3.2%	2.0%	3.7%	3.1%	4.3%	9.9%	1.5%	165,127
1992	28.5%	28.2%	13.3%	3.0%	2.1%	3.9%	3.1%	5.4%	9.5%	0.8%	170,096
1993	29.4%	27.9%	12.6%	2.9%	2.0%	4.0%	3.0%	5.5%	9.3%	1.2%	171,228
1994	29.2%	27.6%	12.6%	3.2%	2.3%	3.7%	3.2%	6.1%	9.0%	1.1%	169,851
1995	30.8%	27.7%	12.5%	3.1%	2.4%	4.1%	3.1%	6.1%	7.4%	1.1%	165,146
1996	32.5%	28.2%	12.5%	2.9%	2.4%	4.0%	3.2%	7.1%	5.9%	1.3%	161,474
1997	32.0%	28.3%	12.5%	2.8%	3.7%	4.2%	3.1%	7.0%	6.5%	1.3%	161,273
1998	33.1%	28.0%	12.4%	2.9%	2.3%	4.0%	3.1%	7.2%	6.0%	1.1%	162,951
1999	34.5%	29.0%	12.5%	2.9%	2.3%	4.4%	2.8%	7.5%	6.1%	1.1%	167,941
2000	34.2%	28.1%	12.0%	2.8%	2.2%	4.1%	2.7%	7.1%	5.8%	1.1%	172,007
2001	35.8%	28.1%	11.4%	2.6%	2.2%	4.0%	2.5%	6.6%	5.7%	1.0%	177,078
2002	36.4%	28.2%	11.0%	2.5%	2.2%	3.8%	2.6%	6.5%	6.2%	0.7%	184,046
2003	37.8%	27.8%	10.7%	2.4%	2.0%	3.9%	2.5%	6.2%	5.8%	0.8%	186,899
2004	38.5%	27.9%	10.0%	2.3%	2.0%	3.8%	2.7%	6.1%	5.7%	0.8%	187,829
2005	37.8%	27.1%	10.2%	2.4%	2.2%	2.9%	2.5%	6.2%	7.8%	0.8%	186,434
2006	36.7%	27.1%	10.4%	2.4%	2.4%	3.4%	2.4%	6.6%	7.9%	0.6%	189,178
2007	37.1%	27.4%	10.3%	2.4%	2.1%	3.1%	2.4%	6.5%	8.0%	0.8%	190,944

Beginning in 1996, a slightly different methodology was used. Percentage differences are negligible.



# PEER INSTITUTIONS

## BIG TEN AND STATE SCHOOLS

Most Big Ten institutions anticipate stable enrollments this year however; four have already reported an increase. Enrollments for the Big Ten universities are shown in Table 30.

TABLE 30: ENROLLMENT AT BIG TEN INSTITUTIONS (MAIN CAMPUSES)  
SPRING TERMS

Big Ten Institution	1995	1996	1997	1998	1999	2000	2001	2002	2003	2004	2005	2006	2007	2008	Change from Spring 2007 to Spring 2008		Change from Fall 2006 to Fall 2007
															Numeric	Percent	Percent
Indiana University	32,802	32,592	32,195	32,298	33,078	33,553	34,303	35,474	36,281	36,473	35,694	36,200	36,698	37,351	+ 653	+ 1.8%	+ 1.9%
University of Illinois*	34,220	34,497	34,324	33,940	34,359	34,595	34,886	35,795	36,318	36,712	37,585	38,622	39,266	38,007	- 1,259	- 3.2%	- 0.5%
University of Iowa	25,188	25,778	26,026	26,045	26,875	26,956	26,611	27,439	28,160	28,190	28,251	28,355	28,653	n/a	----	----	+ 1.4%
University of Michigan**	34,205	34,415	34,109	34,713	35,105	35,512	35,684	36,377	36,787	36,844	37,308	37,751	38,006	38,820	+ 814	+ 2.1%	- 1.6%
Michigan St. University	37,838	38,584	39,400	40,369	40,766	41,118	41,355	42,407	42,761	42,397	42,751	42,960	43,401	43,784	+ 383	+ 0.9%	+ 2.2%
University of Minnesota	34,909	34,855	34,781	35,479	36,077	42,405	43,394	44,934	47,273	47,518	48,484	48,150	48,194	n/a	----	----	+ 1.0%
Northwestern University***	11,762	11,833	11,798	11,774	11,794	11,766	11,659	12,297	12,983	14,790	15,210	16,411	16,926	n/a	----	----	+ 3.0%
Ohio State University**	46,508	45,974	45,708	46,208	46,217	46,359	46,044	47,148	48,256	49,083	48,827	49,084	50,366	51,129	+ 763	+ 1.5%	+ 1.4%
Penn State University*	35,669	36,880	37,177	37,917	38,141	37,740	37,974	38,072	39,872	38,964	38,493	38,592	n/a	n/a	----	----	+ 0.8%
Purdue University	31,824	31,999	32,612	33,003	33,935	34,769	35,132	35,936	35,905	35,683	35,798	35,920	36,593	n/a	----	----	- 0.3%
University of Wisconsin	37,553	37,226	37,193	37,527	37,753	38,053	38,413	39,240	39,119	39,059	39,060	39,041	39,409	n/a	----	----	+ 1.4%

1. Preliminary.
2. Winter Quarter Statistics.
3. Beginning Spring 2005 figures include both campuses.
4. n/a = Holding final analyses for schools with late enrollment census dates.

# STUDENT PERSISTENCE

---

---

As with preparing graduation rates, there are different ways to identify student populations and calculate student persistence rates. Two methodologies discussed in this report are: 1) fall-to-spring comparison of a base population and 2) tracking a freshman cohort over time.

## FALL-TO-SPRING BASE POPULATION COMPARISON

In 1981, the Office of the Registrar, Bloomington, began coordinating a three-part persistence program that focused on identifying students who may not be returning to the Bloomington campus. This was part of an early intervention program, with the goal of increasing student persistence through contacts between the student and his/her school before the beginning of the term. The program included sending letters to eligible students who had not registered for the fall and inviting them to participate in a special registration. To accompany the operational aspect of this summer program, the Office of the Registrar also began preparing campus persistence statistics in 1982. The initial objective of these statistical reports was to measure the success of the intervention programs. The persistence reports compare the campus base population (all students) from one year to the next year. Semester-to-semester comparison reports are also prepared. Any student who is enrolled as of the semester official enrollment-reporting deadline is included in the comparison; semester of matriculation is not a factor. For example, a freshman class includes both new and returning students. Data reports are distributed to campus deans and administrators for a historical persistence perspective, enrollment planning, and examination of the non-returning student populations. **These data are not released to the public nor are they to be considered official data. Data from these reports regularly appear in the Fall Enrollment Reports and are the focus of this section.**

## FRESHMAN COHORT TRACKING

The University Budget Office developed a student tracking system and in 1991 began reporting retention and graduation rates on entering freshmen for all Indiana University campuses. The impetus for reporting the rates was to provide data for all campuses and to respond to externally driven requests from the IHEC, NCAA and the Department of Education. The focus of the reporting is to identify newly matriculated freshmen and to follow them over time. The purpose of that type of study is to report what happens to students who matriculate, an ex post facto approach, and to provide a historical perspective. Student retention rates are gathered as the freshmen cohorts progress through their academic career. Methodological standards are set by the external agencies and are released publicly.

\*\*\*\*\*

Unless noted, all rates reported in this section reflect Bloomington students returning to Bloomington campus. Auditors are excluded from both the base and the comparative populations. Persistence data were first made available with the Fall 1981 base population. For a more in-depth analysis of Bloomington campus student persistence rates, refer to the report, Student Persistence and Attrition Profile published by the Office of the Registrar.

Figures 9 and 10 show the total IU-Bloomington spring term persistence rate has increased to 93.4% and is a record-breaking rate. There is also a record rate at the undergraduate (94.8%) level this year. The rates for graduate, professional, and nondegree students show slight decreases.

FIGURE 9: IU-BLOOMINGTON PERSISTENCE AND ATTRITION  
FALL 2007 TO SPRING 2008

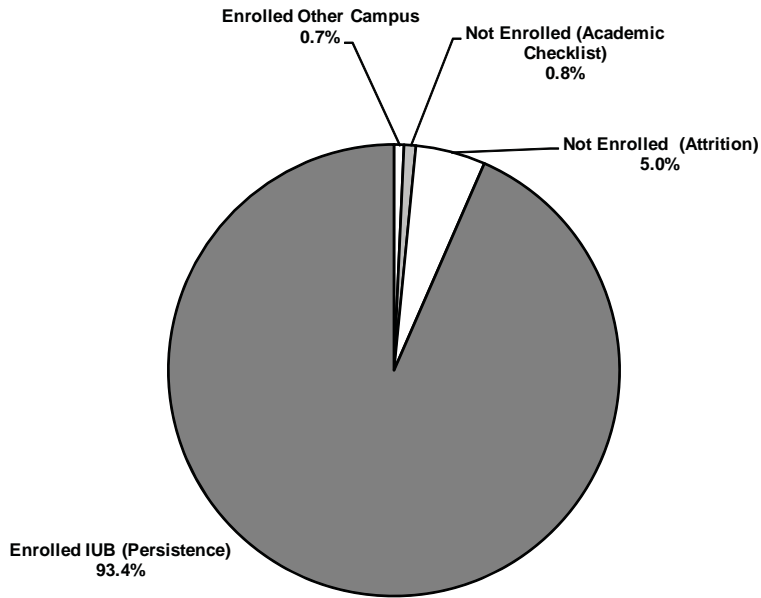


FIGURE 10: STUDENT PERSISTENCE  
SPRING TERMS

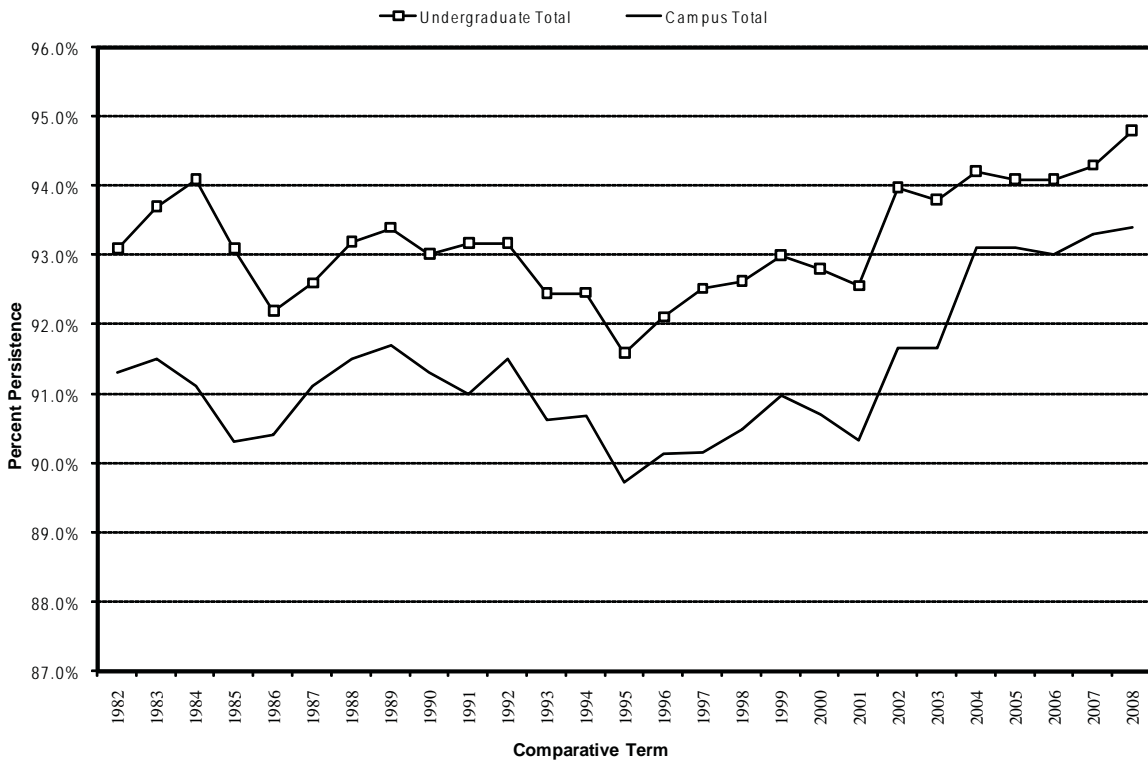




Table 31 shows a detailed summary of persistence/attrition data by student class and level for this spring and this past fall. The base population at the end of the first week of classes was 38,990. Out of that population, 1,202 students received degrees (degrees awarded September 2007 through December 2007), leaving an adjusted base population of 37,788. Of these 37,788 students, 35,312 (93.4%) are enrolled at IU-Bloomington this spring. Of the remaining 2,476 students, 267 (0.7%) are enrolled at other IU campuses, 320 (0.8%) are on academic checklist and 1,889 (5.0%) are unaccounted for.

TABLE 31: STUDENT PERSISTENCE AND ATTRITION BY CLASS AND LEVEL  
FALL TERM BASE POPULATION  
COMPARED WITH THE FOLLOWING SPRING TERM ENROLLMENT

Class and Level	Year	1 Base Population	2 Received Degree	3 Adjusted Base	4 Re-Enrolled IU- Bloomington	5 Non- Returning Students	6 Enrolled at Other IU Campus	7 Academic Checklist	8 Non- Returning (Col 5 minus Cols 6 & 7)
Freshman	Last Year	8,126	2	8,124	7,548 92.9%	576 7.1%	99 1.2%	69 0.8%	408 5.0%
	This Year	8,051	0	8,051	7,594 94.3%	457 5.7%	85 1.1%	53 0.7%	319 4.0%
Sophomore	Last Year	7,260	5	7,255	6,849 94.4%	406 5.6%	48 0.7%	95 1.3%	263 3.6%
	This Year	7,869	3	7,866	7,438 94.6%	428 5.4%	61 0.8%	116 1.5%	251 3.2%
Junior	Last Year	6,129	9	6,120	5,858 95.7%	262 4.3%	26 0.4%	68 1.1%	168 2.7%
	This Year	6,572	3	6,569	6,321 96.2%	248 3.8%	33 0.5%	67 1.0%	148 2.3%
Senior	Last Year	7,743	853	6,890	6,505 94.4%	385 5.6%	27 0.4%	48 0.7%	310 4.5%
	This Year	7,242	874	6,368	5,990 94.1%	378 5.9%	31 0.5%	52 0.8%	295 4.6%
Undergraduate Total	Last Year	29,258	869	28,389	26,760 94.3%	1,629 5.7%	200 0.7%	280 1.0%	1,149 4.0%
	This Year	29,734	880	28,854	27,343 94.8%	1,511 5.2%	210 0.7%	288 1.0%	1,013 3.5%
Masters	Last Year	3,556	194	3,362	3,155 93.8%	207 6.2%	13 0.4%	5 0.1%	189 5.6%
	This Year	3,623	165	3,458	3,212 92.9%	246 7.1%	14 0.4%	4 0.1%	228 6.6%
Doctorate	Last Year	3,454	162	3,292	3,100 94.2%	192 5.8%	8 0.2%	4 0.1%	180 5.5%
	This Year	3,615	151	3,464	3,247 93.7%	217 6.3%	4 0.1%	4 0.1%	209 6.0%
Graduate Total	Last Year	7,010	356	6,654	6,255 94.0%	399 6.0%	21 0.3%	9 0.1%	369 5.5%
	This Year	7,238	316	6,922	6,459 93.3%	463 6.7%	18 0.3%	8 0.1%	437 6.3%
Professional Total	Last Year	937	1	936	922 98.5%	14 1.5%	0 0.0%	1 0.1%	13 1.4%
	This Year	924	2	922	902 97.8%	20 2.2%	1 0.1%	0 0.0%	19 2.1%
Nondegree	Last Year	1,042	7	1,035	582 56.2%	453 43.8%	40 3.9%	19 1.8%	394 38.1%
	This Year	1,094	4	1,090	608 55.8%	482 44.2%	38 3.5%	24 2.2%	420 38.5%
TOTAL	Last Year	38,247	1,233	37,014	34,519 93.3%	2,495 6.7%	261 0.7%	309 0.8%	1,925 5.2%
	This Year	38,990	1,202	37,788	35,312 93.4%	2,476 6.6%	267 0.7%	320 0.8%	1,889 5.0%

Columns 6, 7 and 8 provide further detail of the Non-Returning students (Column 5).

The following table presents a history of persistence rates from 1982 to 2008 for students returning to the Bloomington campus. There are record persistence rates for campus and undergraduate populations; all other levels show decreases. There are rate increases for all undergraduate classes except the senior class.

TABLE 32: HISTORICAL PERSISTENCE RATES BY STUDENT CLASS AND LEVEL  
FALL TERM BASE POPULATION COMPARED WITH THE FOLLOWING SPRING TERM  
ENROLLED AT IU-BLOOMINGTON

Year	Freshman	Sophomore	Junior	Senior	Undergraduate Total	Graduate	Professional	Nondegree	Total
1982	94.0%	92.0%	94.7%	91.5%	93.1%	90.0%	98.3%	57.5%	91.3%
1983	94.4%	93.0%	94.8%	92.5%	93.7%	90.7%	97.1%	54.6%	91.5%
1984	<b>94.9%</b>	94.6%	95.2%	91.2%	94.1%	90.9%	97.9%	47.8%	91.1%
1985	93.5%	92.9%	94.8%	90.8%	93.1%	90.5%	97.1%	44.9%	90.3%
1986	91.6%	92.1%	94.6%	90.6%	92.2%	90.9%	97.2%	52.2%	90.4%
1987	91.9%	92.3%	94.5%	91.7%	92.6%	91.5%	96.1%	56.4%	91.1%
1988	93.0%	92.9%	94.8%	92.1%	93.2%	92.0%	97.9%	55.1%	91.5%
1989	93.5%	93.4%	94.6%	91.9%	93.4%	91.7%	98.2%	<b>58.0%</b>	91.7%
1990	92.4%	93.5%	94.5%	91.4%	93.0%	91.2%	98.2%	57.3%	91.3%
1991	92.9%	93.8%	94.5%	91.4%	93.2%	90.6%	96.3%	52.5%	91.0%
1992	92.7%	93.7%	94.5%	91.9%	93.2%	93.0%	97.8%	55.8%	91.5%
1993	91.1%	92.9%	94.1%	91.8%	92.5%	92.5%	98.6%	51.9%	90.6%
1994	91.4%	93.0%	94.4%	91.3%	92.5%	93.5%	97.3%	53.0%	90.7%
1995	90.2%	92.1%	93.2%	91.1%	91.6%	93.2%	98.4%	46.4%	89.7%
1996	91.5%	92.0%	93.5%	91.6%	92.1%	93.4%	98.2%	46.9%	90.1%
1997	91.7%	93.2%	93.2%	92.1%	92.5%	92.7%	97.5%	43.3%	90.2%
1998	91.7%	92.4%	93.7%	92.9%	92.6%	92.7%	98.7%	45.1%	90.5%
1999	92.3%	93.5%	93.7%	92.7%	93.0%	92.6%	97.9%	43.6%	91.0%
2000	91.9%	93.6%	93.4%	92.2%	92.8%	92.1%	98.3%	42.9%	90.7%
2001	91.7%	93.0%	93.0%	92.8%	92.6%	92.1%	97.3%	41.3%	90.3%
2002	92.0%	94.6%	95.9%	93.9%	94.0%	92.2%	98.6%	41.5%	91.7%
2003	92.5%	93.4%	95.5%	94.1%	93.8%	93.1%	97.4%	40.4%	91.7%
2004	92.1%	94.5%	96.2%	94.2%	94.2%	93.5%	98.7%	53.6%	93.1%
2005	92.2%	<b>94.7%</b>	95.5%	94.2%	94.1%	93.9%	98.4%	54.7%	93.1%
2006	92.3%	94.0%	<b>96.4%</b>	93.9%	94.1%	93.5%	<b>99.5%</b>	50.7%	93.0%
2007	92.9%	94.4%	95.7%	<b>94.4%</b>	94.3%	<b>94.0%</b>	98.5%	56.2%	93.3%
2008	94.3%	94.6%	96.2%	94.1%	<b>94.8%</b>	93.3%	97.8%	55.8%	<b>93.4%</b>

1. Data for 1982 through 1985 reflect end of fall term compared to the end of the third week of classes (official reporting date).
2. Data for 1986 through the present reflect end of the first week of classes (official reporting date) for fall term compared to the end of the first week of classes for the following spring term.
3. Auditors are only included in data prior to 1989.
4. Shaded areas indicate record-high figures.











**TABLE 37: HISTORICAL PERSISTENCE RATES BY ETHNIC GROUP AND GENDER  
FALL TERM BASE POPULATION COMPARED WITH THE FOLLOWING SPRING TERM  
UNDERGRADUATE**

Year	ETHNIC GROUPS							GENDER		CAMPUS TOTAL
	African American	Asian American	Hispanic American	Native American	White American	Other American	Non U.S Students	Female	Male	
1990	85.8%	94.4%	90.3%	90.3%	93.4%	91.0%	92.9%	91.0%	91.6%	91.3%
1991	85.7%	95.5%	91.7%	91.4%	93.5%	93.4%	94.2%	90.3%	91.7%	91.0%
1992	85.7%	<b>96.9%</b>	88.4%	87.0%	93.5%	94.5%	94.0%	91.4%	91.7%	91.5%
1993	83.5%	93.7%	87.1%	93.8%	93.0%	90.7%	94.6%	89.9%	91.4%	90.6%
1994	84.5%	93.6%	90.2%	<b>96.2%</b>	92.8%	92.0%	93.0%	90.1%	91.3%	90.7%
1995	83.2%	94.2%	88.8%	91.2%	92.0%	90.0%	91.4%	89.5%	89.9%	89.7%
1996	86.5%	95.0%	88.2%	91.7%	92.4%	92.4%	92.8%	90.1%	90.2%	90.1%
1997	88.7%	93.1%	90.5%	89.3%	92.7%	92.7%	94.6%	89.9%	90.4%	90.2%
1998	88.9%	94.2%	91.3%	92.1%	92.7%	<b>94.7%</b>	94.2%	90.3%	90.7%	90.5%
1999	90.4%	92.5%	91.1%	86.8%	93.2%	92.3%	93.1%	90.9%	91.1%	91.0%
2000	88.7%	94.1%	91.8%	86.3%	92.9%	92.1%	94.3%	90.6%	90.8%	90.7%
2001	88.5%	94.4%	90.1%	88.6%	92.7%	93.8%	95.0%	90.2%	90.5%	90.3%
2002	89.6%	95.0%	92.4%	93.3%	94.2%	92.7%	94.5%	91.6%	91.8%	91.7%
2003	89.6%	93.9%	93.4%	89.1%	94.0%	93.6%	94.8%	91.9%	91.3%	91.7%
2004	90.5%	95.2%	93.5%	91.8%	94.4%	90.2%	94.7%	94.5%	93.9%	93.1%
2005	90.7%	95.3%	91.4%	89.2%	94.4%	NA	93.5%	94.6%	93.6%	94.1%
2006	89.1%	94.4%	93.3%	84.6%	94.5%	91.5%	92.3%	94.4%	93.7%	94.1%
2007	90.5%	94.1%	92.0%	88.7%	94.6%	90.7%	94.0%	94.6%	93.9%	94.3%
2008	<b>91.4%</b>	95.2%	<b>94.2%</b>	94.8%	<b>94.9%</b>	93.3%	<b>95.3%</b>	<b>94.9%</b>	<b>94.6%</b>	<b>94.8%</b>

TOTAL

Year	ETHNIC GROUPS							GENDER		CAMPUS TOTAL
	African American	Asian American	Hispanic American	Native American	White American	Other American	Non U.S Students	Female	Male	
1990	86.0%	93.8%	90.3%	90.9%	92.0%	87.0%	89.3%	91.0%	91.6%	91.3%
1991	85.2%	94.1%	90.2%	90.6%	91.9%	90.1%	87.9%	90.3%	91.7%	91.0%
1992	86.2%	<b>94.6%</b>	88.4%	86.9%	92.2%	91.3%	89.0%	91.4%	91.7%	91.5%
1993	84.7%	92.5%	87.2%	87.9%	91.1%	89.4%	87.4%	89.9%	91.4%	90.6%
1994	85.3%	92.1%	88.7%	87.7%	91.2%	91.8%	86.2%	90.1%	91.3%	90.7%
1995	84.7%	91.0%	89.3%	88.6%	90.6%	91.6%	82.9%	89.5%	89.9%	89.7%
1996	87.6%	93.2%	88.2%	<b>91.8%</b>	90.6%	91.6%	82.9%	90.1%	90.2%	90.1%
1997	89.0%	92.1%	91.1%	88.3%	90.6%	91.6%	83.8%	89.9%	90.4%	90.2%
1998	88.4%	93.4%	92.0%	<b>91.8%</b>	90.9%	93.1%	84.3%	90.3%	90.7%	90.5%
1999	89.2%	92.8%	90.9%	86.7%	91.4%	91.8%	86.6%	90.9%	91.1%	91.0%
2000	88.6%	93.1%	91.2%	86.9%	91.0%	91.1%	88.0%	90.6%	90.8%	90.7%
2001	88.0%	92.9%	89.3%	89.2%	90.6%	<b>93.7%</b>	87.5%	90.2%	90.5%	90.3%
2002	89.1%	93.4%	92.2%	91.7%	92.0%	91.4%	89.2%	91.6%	91.8%	91.7%
2003	88.4%	92.4%	92.8%	84.5%	91.9%	91.2%	91.1%	91.9%	91.3%	91.7%
2004	90.3%	93.4%	<b>93.2%</b>	90.8%	93.4%	89.4%	92.2%	93.2%	93.0%	93.1%
2005	90.5%	93.9%	90.6%	88.5%	93.6%	NA	91.9%	93.2%	93.1%	93.1%
2006	89.4%	93.5%	92.8%	84.3%	93.5%	91.4%	91.8%	93.1%	92.9%	93.0%
2007	89.9%	93.0%	92.2%	89.5%	93.7%	90.1%	<b>92.6%</b>	<b>93.3%</b>	93.2%	93.3%
2008	<b>90.8%</b>	94.3%	92.6%	90.0%	<b>93.9%</b>	90.1%	91.3%	<b>93.3%</b>	<b>93.6%</b>	<b>93.4%</b>

Shaded cells indicate record-high rates.