



This report provides views on persistence to the second semester for the incoming full-time, beginner cohorts of 2002, 2003, and 2004. Consistent with our cohort logic, students are defined to a cohort based upon their entry semester/status (fall or either previous summer session/degree-seeking beginner or transfer) and/or by their high school graduation date when appropriate.

As with the fall to fall report, exclusions to the student cohorts (i.e. death, military service) have been added to the standard report view. Managing and accomodating these exclusions will provide a more accurate view of persistence but may also change previously published figures. In order to respond to external agencies, views by intended degree has been added to the report. To place these retention figures in context, a five year, rolling average of retention has been included in this and future reports.

An appendix (14.2.1) is available which provides views on the entire beginner cohorts and part-time beginner cohort subsets. This and other reports are available via our website at <http://www.indiana.edu/~urr>.

To protect student privacy, cells with a "began" number of ten or less are masked. As always, your comments and suggestions are welcomed.

**Persistence to the Second Semester by Cohort Status**

	2002 Cohort			2003 Cohort			2004 Cohort			5 Yr Avg.
	began	ret'd	%	began	ret'd	%	began	ret'd	%	
Beginner	14,481	12,748	88.0%	14,088	12,394	88.0%	13,421	11,739	87.5%	86.8%
Transfer	4,152	3,375	81.3%	4,153	3,374	81.2%	5,097	4,088	80.2%	80.1%
Exclusions	4			1			3			
Overall	18,633	16,123	86.5%	18,241	15,768	86.4%	18,518	15,827	85.5%	85.3%

**Full-Time Beginners Only (FTB)**

	2002 Cohort			2003 Cohort			2004 Cohort			5 Yr Avg.
	began	ret'd	%	began	ret'd	%	began	ret'd	%	
FTB	12,675	11,523	90.9%	12,543	11,364	90.6%	12,106	10,894	90.0%	90.0%
FTB as % of Beginners	87.5%	90.4%		89.0%	91.7%		90.2%	92.8%		
FTB as % of Overall	68.0%	71.5%		68.8%	72.1%		65.4%	68.8%		

**Part-Time Beginners Only (PTB)**

	2002 Cohort			2003 Cohort			2004 Cohort			5 Yr Avg.
	began	ret'd	%	began	ret'd	%	began	ret'd	%	
PTB	1,806	1,225	67.8%	1,545	1,030	66.7%	1,315	845	64.3%	65.1%
PTB as % of Beginners	12.5%	9.6%		11.0%	8.3%		9.8%	7.2%		
PTB as % of Overall	9.7%	7.6%		8.5%	6.5%		7.1%	5.3%		

**Source Information**

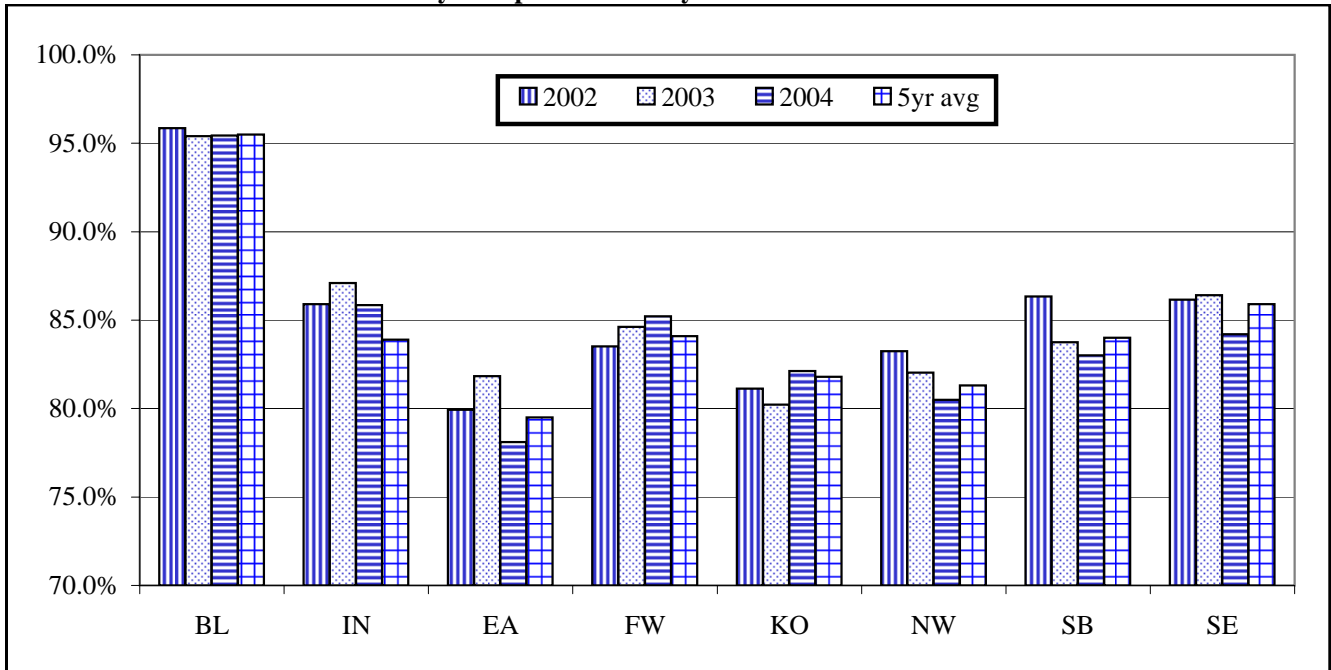
University Budget Office	Univeristy Reporting & Research	(812) 855-9893
Reporting Website: <a href="http://www.indiana.edu/~urr">http://www.indiana.edu/~urr</a>		email: <a href="mailto:urr@indiana.edu">urr@indiana.edu</a>

IU

**Persistence to the Second Semester - Full-Time Beginners Only (FTB)**

	2002 Cohort			2003 Cohort			2004 Cohort			5 Yr Avg.
	began	ret'd	%	began	ret'd	%	began	ret'd	%	
FTB	12,675	11,523	90.9%	12,543	11,364	90.6%	12,106	10,894	90.0%	90.0%
By Intended Degree										
Bachelor's	11,868	10,838	91.3%	11,725	10,653	90.9%	11,444	10,339	90.3%	90.5%
Other	807	685	84.9%	818	711	86.9%	662	555	83.8%	82.9%
By Ethnicity										
African Amer.	667	569	85.3%	701	611	87.2%	804	692	86.1%	86.1%
Hispanic	301	273	90.7%	320	290	90.6%	347	306	88.2%	88.3%
Other	11,707	10,681	91.2%	11,522	10,463	90.8%	10,955	9,896	90.3%	90.3%
Students By Age										
<20	11,457	10,530	91.9%	11,352	10,409	91.7%	11,070	10,069	91.0%	91.2%
20-21	535	433	80.9%	519	419	80.7%	456	364	79.8%	77.7%
22-24	238	186	78.2%	238	185	77.7%	244	191	78.3%	75.6%
25+	445	374	84.0%	434	351	80.9%	336	270	80.4%	79.2%
By Sex										
Male	5,401	4,889	90.5%	5,279	4,751	90.0%	5,173	4,636	89.6%	89.6%
Female	7,274	6,634	91.2%	7,264	6,613	91.0%	6,933	6,258	90.3%	90.4%
By Residency										
Resident	9,928	8,904	89.7%	9,914	8,889	89.7%	9,682	8,619	89.0%	88.9%
Non-Res.	2,747	2,619	95.3%	2,629	2,475	94.1%	2,424	2,275	93.9%	94.6%
By High School Rank										
Top 10%	1,541	1,483	96.2%	1,507	1,450	96.2%	1,422	1,355	95.3%	96.2%
11%-25%	2,700	2,564	95.0%	2,626	2,453	93.4%	2,420	2,236	92.4%	93.8%
26%-50%	3,918	3,537	90.3%	3,605	3,256	90.3%	3,449	3,093	89.7%	90.6%
Bot 50%	2,103	1,761	83.7%	1,864	1,548	83.0%	1,911	1,552	81.2%	82.1%
By GPA in the First Fall Semester										
3.0 - 4.0	6,099	5,924	97.1%	6,351	6,152	96.9%	5,736	5,575	97.2%	97.0%
2.0 - 2.99	4,248	4,038	95.1%	3,939	3,726	94.6%	3,927	3,706	94.4%	95.0%
< 2.0	2,328	1,561	67.1%	2,253	1,486	66.0%	2,443	1,613	66.0%	66.2%
By SAT Groups										
1200+	1,878	1,802	96.0%	1,850	1,777	96.1%	1,733	1,663	96.0%	95.6%
800-1190	7,496	6,862	91.5%	7,267	6,646	91.5%	7,292	6,594	90.4%	91.1%
400-790	655	557	85.0%	680	581	85.4%	618	515	83.3%	84.8%

**Persistence to the Second Semester by Campus - FTB Only**



## Bloomington

### Persistence to the Second Semester by Cohort Status

	2002 Cohort			2003 Cohort			2004 Cohort			5 Yr Avg.
	began	ret'd	%	began	ret'd	%	began	ret'd	%	
Beginner	7,078	6,769	95.6%	6,784	6,468	95.3%	6,350	6,054	95.3%	95.3%
Transfer	733	674	92.0%	788	731	92.8%	876	793	90.5%	92.0%
Exclusions	2			0			2			
Overall	7,811	7,443	95.3%	7,572	7,199	95.1%	7,226	6,847	94.8%	95.3%

### Full-Time Beginners Only (FTB)

	2002 Cohort			2003 Cohort			2004 Cohort			5 Yr Avg.
	began	ret'd	%	began	ret'd	%	began	ret'd	%	
FTB	7,018	6,729	95.9%	6,747	6,440	95.4%	6,307	6,019	95.4%	95.5%
FTB as % of Beginners	99.2%	99.4%		99.5%	99.6%		99.3%	99.4%		
FTB as % of Overall	89.8%	90.4%		89.1%	89.5%		87.3%	87.9%		
By Intended Degree										
Bachelor's	6,954	6,673	96.0%	6,649	6,346	95.4%	6,289	6,003	95.5%	95.5%
Other	64	56	87.5%	98	94	95.9%	18	16	88.9%	87.7%
By Ethnicity										
African Amer.	258	246	95.3%	291	268	92.1%	351	328	93.4%	93.8%
Hispanic	151	150	99.3%	130	124	95.4%	155	145	93.5%	96.3%
Other	6,609	6,333	95.8%	6,326	6,048	95.6%	5,801	5,546	95.6%	95.5%
Students By Age										
<20	6,862	6,591	96.1%	6,609	6,317	95.6%	6,188	5,909	95.5%	95.7%
20-21	104	95	91.3%	97	90	92.8%	85	80	94.1%	90.9%
22-24	30	24	80.0%	20	16	80.0%	19	18	94.7%	76.3%
25+	22	19	86.4%	21	17	81.0%	15	12	80.0%	76.5%
By Sex										
Male	3,114	2,983	95.8%	2,968	2,828	95.3%	2,899	2,774	95.7%	95.6%
Female	3,904	3,746	96.0%	3,779	3,612	95.6%	3,408	3,245	95.2%	95.4%
By Residency										
Resident	4,508	4,300	95.4%	4,348	4,150	95.4%	4,114	3,928	95.5%	95.2%
Non-Res.	2,510	2,429	96.8%	2,399	2,290	95.5%	2,193	2,091	95.3%	95.9%
By High School Rank										
Top 10%	1,165	1,128	96.8%	1,110	1,085	97.7%	979	953	97.3%	97.5%
11%-25%	1,810	1,747	96.5%	1,638	1,570	95.8%	1,433	1,360	94.9%	95.8%
26%-50%	2,179	2,068	94.9%	1,844	1,736	94.1%	1,670	1,576	94.4%	94.5%
Bot 50%	381	360	94.5%	227	210	92.5%	218	201	92.2%	93.6%
By GPA in the First Fall Semester										
3.0 - 4.0	3,875	3,801	98.1%	4,156	4,068	97.9%	3,560	3,486	97.9%	98.0%
2.0 - 2.99	2,357	2,294	97.3%	1,988	1,907	95.9%	2,060	1,976	95.9%	96.9%
< 2.0	786	634	80.7%	603	465	77.1%	687	557	81.1%	79.5%
By SAT Groups										
1200+	1,604	1,554	96.9%	1,578	1,537	97.4%	1,448	1,416	97.8%	96.9%
800-1190	4,140	3,962	95.7%	3,843	3,654	95.1%	3,757	3,567	94.9%	95.4%
400-790	125	121	96.8%	113	105	92.9%	124	114	91.9%	94.1%

\*\* Began cell contains 10 or fewer students.

# IUPUI

## Persistence to the Second Semester by Cohort Status

	2002 Cohort			2003 Cohort			2004 Cohort			5 Yr Avg.
	began	ret'd	%	began	ret'd	%	began	ret'd	%	
Beginner	2,786	2,274	81.6%	2,826	2,345	83.0%	2,719	2,227	81.9%	78.9%
Transfer	1,595	1,297	81.3%	1,534	1,213	79.1%	2,029	1,599	78.8%	77.7%
Exclusions	1			1			1			
Overall	4,381	3,571	81.5%	4,360	3,558	81.6%	4,748	3,826	80.6%	78.5%

## Full-Time Beginners Only (FTB)

	2002 Cohort			2003 Cohort			2004 Cohort			5 Yr Avg.
	began	ret'd	%	began	ret'd	%	began	ret'd	%	
FTB	2,242	1,926	85.9%	2,343	2,040	87.1%	2,302	1,976	85.8%	83.9%
FTB as % of Beginners	80.5%	84.7%		82.9%	87.0%		84.7%	88.7%		
FTB as % of Overall	51.2%	53.9%		53.7%	57.3%		48.5%	51.6%		
By Intended Degree										
Bachelor's	1,967	1,700	86.4%	2,072	1,802	87.0%	2,046	1,755	85.8%	84.7%
Other	275	226	82.2%	271	238	87.8%	256	221	86.3%	84.2%
By Ethnicity										
African Amer.	193	158	81.9%	196	167	85.2%	225	198	88.0%	83.2%
Hispanic	30	26	86.7%	54	47	87.0%	62	53	85.5%	83.2%
Other	2,019	1,742	86.3%	2,093	1,826	87.2%	2,015	1,725	85.6%	84.0%
Students By Age										
<20	1,907	1,664	87.3%	1,991	1,752	88.0%	1,989	1,733	87.1%	85.4%
20-21	132	105	79.5%	141	115	81.6%	125	93	74.4%	74.0%
22-24	75	57	76.0%	82	65	79.3%	78	62	79.5%	74.3%
25+	128	100	78.1%	129	108	83.7%	110	88	80.0%	78.0%
By Sex										
Male	951	814	85.6%	981	843	85.9%	927	777	83.8%	82.8%
Female	1,291	1,112	86.1%	1,362	1,197	87.9%	1,375	1,199	87.2%	84.7%
By Residency										
Resident	2,188	1,881	86.0%	2,295	1,999	87.1%	2,245	1,928	85.9%	83.9%
Non-Res.	54	45	83.3%	48	41	85.4%	57	48	84.2%	82.8%
By High School Rank										
Top 10%	175	164	93.7%	211	198	93.8%	240	224	93.3%	92.7%
11%-25%	404	372	92.1%	450	399	88.7%	424	374	88.2%	89.4%
26%-50%	715	602	84.2%	771	674	87.4%	781	664	85.0%	85.8%
Bot 50%	594	501	84.3%	549	461	84.0%	584	488	83.6%	80.2%
By GPA in the First Fall Semester										
3.0 - 4.0	947	899	94.9%	945	911	96.4%	897	870	97.0%	95.5%
2.0 - 2.99	707	670	94.8%	797	752	94.4%	776	730	94.1%	93.6%
< 2.0	588	357	60.7%	601	377	62.7%	629	376	59.8%	60.0%
By SAT Groups										
1200+	138	124	89.9%	135	121	89.6%	156	138	88.5%	88.2%
800-1190	1,408	1,236	87.8%	1,428	1,266	88.7%	1,466	1,280	87.3%	86.0%
400-790	150	128	85.3%	160	141	88.1%	159	140	88.1%	83.8%

\*\* Began cell contains 10 or fewer students.

**East**

**Persistence to the Second Semester by Cohort Status**

	2002 Cohort			2003 Cohort			2004 Cohort			5 Yr Avg.
	began	ret'd	%	began	ret'd	%	began	ret'd	%	
Beginner	471	351	74.5%	474	354	74.7%	406	310	76.4%	72.7%
Transfer	99	79	79.8%	112	84	75.0%	150	127	84.7%	75.9%
Exclusions	0			0			0			
Overall	570	430	75.4%	586	438	74.7%	556	437	78.6%	73.4%

**Full-Time Beginners Only (FTB)**

	2002 Cohort			2003 Cohort			2004 Cohort			5 Yr Avg.
	began	ret'd	%	began	ret'd	%	began	ret'd	%	
FTB	304	243	79.9%	319	261	81.8%	274	214	78.1%	79.5%
FTB as % of Beginners	64.5%	69.2%		67.3%	73.7%		67.5%	69.0%		
FTB as % of Overall	53.3%	56.5%		54.4%	59.6%		49.3%	49.0%		
By Intended Degree										
Bachelor's	210	168	80.0%	232	191	82.3%	230	179	77.8%	81.4%
Other	94	75	79.8%	87	70	80.5%	44	35	79.5%	75.3%
By Ethnicity										
African Amer.	**	**	85.7%	14	10	71.4%	**	**	90.0%	75.4%
Hispanic	**	**	100.0%	**	**	100.0%	**	**	100.0%	83.3%
Other	296	236	79.7%	303	249	82.2%	262	203	77.5%	79.6%
Students By Age										
<20	200	166	83.0%	204	169	82.8%	199	156	78.4%	81.7%
20-21	34	21	61.8%	38	30	78.9%	22	16	72.7%	70.8%
22-24	20	13	65.0%	19	16	84.2%	16	10	62.5%	73.4%
25+	50	43	86.0%	58	46	79.3%	37	32	86.5%	78.2%
By Sex										
Male	103	78	75.7%	116	82	70.7%	88	63	71.6%	73.1%
Female	201	165	82.1%	203	179	88.2%	186	151	81.2%	82.9%
By Residency										
Resident	254	202	79.5%	266	221	83.1%	236	180	76.3%	79.4%
Non-Res.	50	41	82.0%	53	40	75.5%	38	34	89.5%	80.3%
By High School Rank										
Top 10%	**	**	100.0%	11	10	90.9%	**	**	100.0%	90.2%
11%-25%	32	29	90.6%	25	24	96.0%	31	27	87.1%	89.0%
26%-50%	63	57	90.5%	54	48	88.9%	50	47	94.0%	89.0%
Bot 50%	65	47	72.3%	65	54	83.1%	84	58	69.0%	74.6%
By GPA in the First Fall Semester										
3.0 - 4.0	156	149	95.5%	147	139	94.6%	122	114	93.4%	94.5%
2.0 - 2.99	72	62	86.1%	74	70	94.6%	62	56	90.3%	91.7%
< 2.0	76	32	42.1%	98	52	53.1%	90	44	48.9%	51.2%
By SAT Groups										
1200+	**	**	75.0%	**	**	50.0%	**	**	100.0%	77.8%
800-1190	89	79	88.8%	71	66	93.0%	100	81	81.0%	87.4%
400-790	21	20	95.2%	39	33	84.6%	31	23	74.2%	87.6%

\*\* Began cell contains 10 or fewer students.

## Fort Wayne

### Persistence to the Second Semester by Cohort Status

	2002 Cohort			2003 Cohort			2004 Cohort			5 Yr Avg.
	began	ret'd	%	began	ret'd	%	began	ret'd	%	
Beginner	1,023	826	80.7%	869	714	82.2%	993	812	81.8%	80.8%
Transfer	538	414	77.0%	530	407	76.8%	537	408	76.0%	75.7%
Exclusions	1			0			0			
Overall	1,561	1,240	79.4%	1,399	1,121	80.1%	1,530	1,220	79.7%	79.0%

### Full-Time Beginners Only (FTB)

	2002 Cohort			2003 Cohort			2004 Cohort			5 Yr Avg.
	began	ret'd	%	began	ret'd	%	began	ret'd	%	
FTB	831	694	83.5%	706	597	84.6%	839	716	85.3%	84.1%
FTB as % of Beginners	81.2%	84.0%		81.2%	83.6%		84.5%	88.2%		
FTB as % of Overall	53.2%	56.0%		50.5%	53.3%		54.8%	58.7%		
By Intended Degree										
Bachelor's	758	630	83.1%	634	533	84.1%	724	616	85.1%	83.9%
Other	73	64	87.7%	72	64	88.9%	115	100	87.0%	86.6%
By Ethnicity										
African Amer.	37	23	62.2%	29	25	86.2%	43	32	74.4%	76.1%
Hispanic	18	15	83.3%	16	16	100.0%	14	12	85.7%	92.0%
Other	776	656	84.5%	661	556	84.1%	782	672	85.9%	84.2%
Students By Age										
<20	690	577	83.6%	588	505	85.9%	729	624	85.6%	85.1%
20-21	73	61	83.6%	53	39	73.6%	48	41	85.4%	77.2%
22-24	24	18	75.0%	28	23	82.1%	30	24	80.0%	76.2%
25+	44	38	86.4%	37	30	81.1%	32	27	84.4%	82.1%
By Sex										
Male	354	290	81.9%	285	235	82.5%	341	292	85.6%	82.2%
Female	477	404	84.7%	421	362	86.0%	498	424	85.1%	85.5%
By Residency										
Resident	814	683	83.9%	687	581	84.6%	811	694	85.6%	84.2%
Non-Res.	17	11	64.7%	19	16	84.2%	28	22	78.6%	81.7%
By High School Rank										
Top 10%	49	48	98.0%	44	41	93.2%	59	48	81.4%	92.0%
11%-25%	116	104	89.7%	111	97	87.4%	122	109	89.3%	88.0%
26%-50%	248	208	83.9%	186	166	89.2%	242	211	87.2%	85.8%
Bot 50%	322	252	78.3%	251	200	79.7%	257	209	81.3%	80.6%
By GPA in the First Fall Semester										
3.0 - 4.0	308	290	94.2%	263	246	93.5%	326	309	94.8%	93.8%
2.0 - 2.99	274	254	92.7%	236	218	92.4%	255	233	91.4%	92.7%
< 2.0	249	150	60.2%	207	133	64.3%	258	174	67.4%	62.3%
By SAT Groups										
1200+	46	42	91.3%	26	22	84.6%	47	41	87.2%	85.6%
800-1190	527	440	83.5%	466	400	85.8%	585	499	85.3%	84.8%
400-790	87	69	79.3%	76	66	86.8%	72	57	79.2%	85.4%

\*\* Began cell contains 10 or fewer students.

Fort Wayne - IU Students only

# Kokomo

## Persistence to the Second Semester by Cohort Status

	2002 Cohort			2003 Cohort			2004 Cohort			5 Yr Avg.
	began	ret'd	%	began	ret'd	%	began	ret'd	%	
Beginner	476	372	78.2%	557	429	77.0%	466	374	80.3%	78.6%
Transfer	165	119	72.1%	184	146	79.3%	235	182	77.4%	74.7%
Exclusions	0			0			0			
Overall	641	491	76.6%	741	575	77.6%	701	556	79.3%	77.6%

## Full-Time Beginners Only (FTB)

	2002 Cohort			2003 Cohort			2004 Cohort			5 Yr Avg.
	began	ret'd	%	began	ret'd	%	began	ret'd	%	
FTB	339	275	81.1%	383	307	80.2%	358	294	82.1%	81.8%
FTB as % of Beginners	71.2%	73.9%		68.8%	71.6%		76.8%	78.6%		
FTB as % of Overall	52.9%	56.0%		51.7%	53.4%		51.1%	52.9%		
By Intended Degree										
Bachelor's	273	217	79.5%	310	250	80.6%	325	268	82.5%	82.2%
Other	66	58	87.9%	73	57	78.1%	33	26	78.8%	79.1%
By Ethnicity										
African Amer.	**	**	50.0%	**	**	87.5%	**	**	77.8%	78.6%
Hispanic	**	**	77.8%	**	**	83.3%	**	**	66.7%	77.4%
Other	322	264	82.0%	369	295	79.9%	346	285	82.4%	82.0%
Students By Age										
<20	275	222	80.7%	315	257	81.6%	312	259	83.0%	82.7%
20-21	20	14	70.0%	30	20	66.7%	18	13	72.2%	70.2%
22-24	11	11	100.0%	**	**	50.0%	12	9	75.0%	81.4%
25+	33	28	84.8%	34	28	82.4%	16	13	81.3%	80.9%
By Sex										
Male	113	83	73.5%	119	90	75.6%	120	95	79.2%	78.0%
Female	226	192	85.0%	264	217	82.2%	238	199	83.6%	83.6%
By Residency										
Resident	338	274	81.1%	380	305	80.3%	358	294	82.1%	82.0%
Non-Res.	**	**	100.0%	**	**	66.7%	**	**	n/a	61.5%
By High School Rank										
Top 10%	14	14	100.0%	17	15	88.2%	15	13	86.7%	91.4%
11%-25%	62	56	90.3%	72	59	81.9%	70	64	91.4%	86.9%
26%-50%	122	98	80.3%	126	103	81.7%	124	105	84.7%	83.4%
Bot 50%	97	71	73.2%	127	99	78.0%	120	92	76.7%	76.0%
By GPA in the First Fall Semester										
3.0 - 4.0	113	108	95.6%	120	112	93.3%	105	100	95.2%	93.6%
2.0 - 2.99	138	118	85.5%	138	127	92.0%	144	137	95.1%	91.3%
< 2.0	88	49	55.7%	125	68	54.4%	109	57	52.3%	55.4%
By SAT Groups										
1200+	16	15	93.8%	**	**	100.0%	15	9	60.0%	88.3%
800-1190	191	155	81.2%	244	200	82.0%	234	202	86.3%	84.1%
400-790	29	20	69.0%	23	18	78.3%	25	18	72.0%	79.7%

\*\* Began cell contains 10 or fewer students.

## Northwest

### Persistence to the Second Semester by Cohort Status

	2002 Cohort			2003 Cohort			2004 Cohort			5 Yr Avg.
	began	ret'd	%	began	ret'd	%	began	ret'd	%	
Beginner	812	656	80.8%	860	681	79.2%	762	581	76.2%	78.7%
Transfer	210	163	77.6%	260	202	77.7%	329	252	76.6%	77.3%
Exclusions	1			0			0			
Overall	1,022	819	80.1%	1,120	883	78.8%	1,091	833	76.4%	78.7%

### Full-Time Beginners Only (FTB)

	2002 Cohort			2003 Cohort			2004 Cohort			5 Yr Avg.
	began	ret'd	%	began	ret'd	%	began	ret'd	%	
FTB	603	502	83.3%	662	543	82.0%	605	487	80.5%	81.3%
FTB as % of Beginners	74.3%	76.5%		77.0%	79.7%		79.4%	83.8%		
FTB as % of Overall	59.0%	61.3%		59.1%	61.5%		55.5%	58.5%		
By Intended Degree										
Bachelor's	449	372	82.9%	520	423	81.3%	506	413	81.6%	81.4%
Other	154	130	84.4%	142	120	84.5%	99	74	74.7%	80.8%
By Ethnicity										
African Amer.	111	87	78.4%	109	89	81.7%	108	74	68.5%	78.5%
Hispanic	70	54	77.1%	82	71	86.6%	72	61	84.7%	78.8%
Other	422	361	85.5%	471	383	81.3%	425	352	82.8%	82.5%
Students By Age										
<20	425	358	84.2%	473	401	84.8%	461	387	83.9%	83.2%
20-21	69	51	73.9%	73	55	75.3%	60	37	61.7%	70.6%
22-24	40	32	80.0%	41	27	65.9%	28	20	71.4%	73.4%
25+	69	61	88.4%	75	60	80.0%	56	43	76.8%	80.2%
By Sex										
Male	238	194	81.5%	244	193	79.1%	229	181	79.0%	77.9%
Female	365	308	84.4%	418	350	83.7%	376	306	81.4%	83.3%
By Residency										
Resident	595	495	83.2%	656	539	82.2%	597	482	80.7%	81.4%
Non-Res.	**	**	87.5%	**	**	66.7%	**	**	62.5%	70.6%
By High School Rank										
Top 10%	46	41	89.1%	56	51	91.1%	31	29	93.5%	91.0%
11%-25%	68	64	94.1%	87	76	87.4%	86	72	83.7%	90.7%
26%-50%	178	147	82.6%	186	167	89.8%	162	140	86.4%	84.8%
Bot 50%	248	202	81.5%	252	193	76.6%	255	199	78.0%	76.3%
By GPA in the First Fall Semester										
3.0 - 4.0	232	224	96.6%	239	222	92.9%	201	194	96.5%	95.1%
2.0 - 2.99	196	180	91.8%	213	199	93.4%	188	170	90.4%	91.7%
< 2.0	175	98	56.0%	210	122	58.1%	216	123	56.9%	58.6%
By SAT Groups										
1200+	23	22	95.7%	36	33	91.7%	14	14	100.0%	90.4%
800-1190	340	286	84.1%	356	309	86.8%	368	306	83.2%	84.2%
400-790	109	86	78.9%	134	103	76.9%	106	78	73.6%	78.0%

\*\* Began cell contains 10 or fewer students.



## South Bend

### Persistence to the Second Semester by Cohort Status

	2002 Cohort			2003 Cohort			2004 Cohort			5 Yr Avg.
	began	ret'd	%	began	ret'd	%	began	ret'd	%	
Beginner	932	750	80.5%	895	714	79.8%	910	714	78.5%	79.6%
Transfer	443	342	77.2%	398	310	77.9%	549	413	75.2%	76.7%
Exclusions	0			0			0			
Overall	1,375	1,092	79.4%	1,293	1,024	79.2%	1,459	1,127	77.2%	78.7%

### Full-Time Beginners Only (FTB)

	2002 Cohort			2003 Cohort			2004 Cohort			5 Yr Avg.
	began	ret'd	%	began	ret'd	%	began	ret'd	%	
FTB	659	569	86.3%	707	592	83.7%	706	586	83.0%	84.0%
FTB as % of Beginners	70.7%	75.9%		79.0%	82.9%		77.6%	82.1%		
FTB as % of Overall	47.9%	52.1%		54.7%	57.8%		48.4%	52.0%		
By Intended Degree										
Bachelor's	594	509	85.7%	646	537	83.1%	620	512	82.6%	83.7%
Other	65	60	92.3%	61	55	90.2%	86	74	86.0%	87.5%
By Ethnicity										
African Amer.	41	35	85.4%	27	21	77.8%	42	33	78.6%	81.3%
Hispanic	15	13	86.7%	24	20	83.3%	27	22	81.5%	79.5%
Other	603	521	86.4%	656	551	84.0%	637	531	83.4%	84.3%
Students By Age										
<20	523	458	87.6%	574	487	84.8%	565	472	83.5%	85.6%
20-21	58	45	77.6%	57	43	75.4%	59	51	86.4%	74.3%
22-24	26	22	84.6%	28	24	85.7%	38	28	73.7%	82.0%
25+	52	44	84.6%	48	38	79.2%	44	35	79.5%	78.4%
By Sex										
Male	268	225	84.0%	290	238	82.1%	274	219	79.9%	81.9%
Female	391	344	88.0%	417	354	84.9%	432	367	85.0%	85.5%
By Residency										
Resident	635	552	86.9%	693	580	83.7%	685	573	83.6%	84.3%
Non-Res.	24	17	70.8%	14	12	85.7%	21	13	61.9%	76.8%
By High School Rank										
Top 10%	29	27	93.1%	29	24	82.8%	43	36	83.7%	89.7%
11%-25%	101	91	90.1%	114	106	93.0%	104	93	89.4%	90.7%
26%-50%	214	190	88.8%	209	167	79.9%	208	177	85.1%	85.4%
Bot 50%	209	178	85.2%	213	180	84.5%	195	150	76.9%	82.6%
By GPA in the First Fall Semester										
3.0 - 4.0	235	228	97.0%	237	225	94.9%	233	223	95.7%	95.8%
2.0 - 2.99	253	231	91.3%	245	226	92.2%	225	207	92.0%	92.6%
< 2.0	171	110	64.3%	225	141	62.7%	248	156	62.9%	62.0%
By SAT Groups										
1200+	24	21	87.5%	36	28	77.8%	33	29	87.9%	85.4%
800-1190	416	366	88.0%	451	391	86.7%	468	392	83.8%	87.6%
400-790	65	55	84.6%	81	69	85.2%	58	50	86.2%	81.5%

\*\* Began cell contains 10 or fewer students.

## Southeast

### Persistence to the Second Semester by Cohort Status

	2002 Cohort			2003 Cohort			2004 Cohort			5 Yr Avg.
	began	ret'd	%	began	ret'd	%	began	ret'd	%	
Beginner	903	750	83.1%	824	689	83.6%	815	667	81.8%	81.7%
Transfer	369	287	77.8%	347	281	81.0%	392	314	80.1%	80.3%
Exclusions	0			0			0			
Overall	1,272	1,037	81.5%	1,171	970	82.8%	1,207	981	81.3%	81.3%

### Full-Time Beginners Only (FTB)

	2002 Cohort			2003 Cohort			2004 Cohort			5 Yr Avg.
	began	ret'd	%	began	ret'd	%	began	ret'd	%	
FTB	679	585	86.2%	676	584	86.4%	715	602	84.2%	85.9%
FTB as % of Beginners	75.2%	78.0%		82.0%	84.8%		87.7%	90.3%		
FTB as % of Overall	53.4%	56.4%		57.7%	60.2%		59.2%	61.4%		
By Intended Degree										
Bachelor's	663	569	85.8%	662	571	86.3%	704	593	84.2%	85.8%
Other	16	16	100.0%	14	13	92.9%	11	9	81.8%	93.3%
By Ethnicity										
African Amer.	12	10	83.3%	27	24	88.9%	16	11	68.8%	78.3%
Hispanic	**	**	100.0%	**	**	83.3%	12	9	75.0%	86.4%
Other	660	568	86.1%	643	555	86.3%	687	582	84.7%	86.0%
Students By Age										
<20	575	494	85.9%	598	521	87.1%	627	529	84.4%	86.4%
20-21	45	41	91.1%	30	27	90.0%	39	33	84.6%	84.6%
22-24	12	**	75.0%	16	12	75.0%	23	20	87.0%	73.1%
25+	47	41	87.2%	32	24	75.0%	26	20	76.9%	83.2%
By Sex										
Male	260	222	85.4%	276	242	87.7%	295	235	79.7%	85.8%
Female	419	363	86.6%	400	342	85.5%	420	367	87.4%	85.9%
By Residency										
Resident	596	517	86.7%	589	514	87.3%	636	540	84.9%	86.4%
Non-Res.	83	68	81.9%	87	70	80.5%	79	62	78.5%	81.4%
By High School Rank										
Top 10%	56	54	96.4%	29	26	89.7%	49	46	93.9%	95.1%
11%-25%	107	101	94.4%	129	122	94.6%	150	137	91.3%	93.3%
26%-50%	199	167	83.9%	229	195	85.2%	212	173	81.6%	86.2%
Bot 50%	187	150	80.2%	180	151	83.9%	198	155	78.3%	80.4%
By GPA in the First Fall Semester										
3.0 - 4.0	233	225	96.6%	244	229	93.9%	292	279	95.5%	96.5%
2.0 - 2.99	251	229	91.2%	248	227	91.5%	217	197	90.8%	92.2%
< 2.0	195	131	67.2%	184	128	69.6%	206	126	61.2%	65.4%
By SAT Groups										
1200+	23	21	91.3%	26	25	96.2%	17	13	76.5%	92.9%
800-1190	385	338	87.8%	408	360	88.2%	314	267	85.0%	88.5%
400-790	69	58	84.1%	54	46	85.2%	43	35	81.4%	85.2%

\*\* Began cell contains 10 or fewer students.