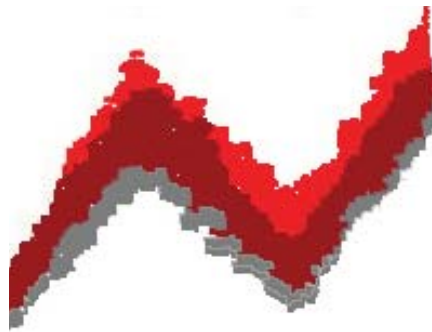
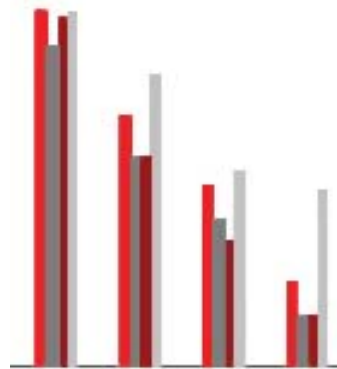
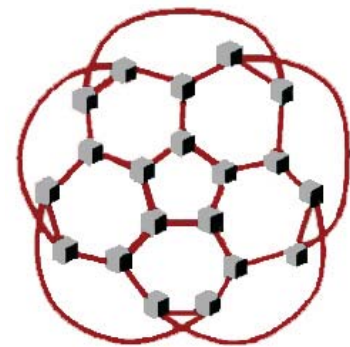


OFFICE OF THE REGISTRAR ENROLLMENT REPORT UPDATE

A SUMMARY OF SUMMER SESSIONS 2008



This report is also available with color graphics at: <http://www.indiana.edu/~registra/enrollreports/>

INDIANA UNIVERSITY - BLOOMINGTON
DATA MANAGEMENT & ADMINISTRATION 812-855-6235

PREFACE

This report is the third in a series of IU- Bloomington enrollment information summaries for the academic year. This report is meant to be used as a companion report to the *Fall 2007 Enrollment Report* and *Spring 2008 Enrollment Report Update*. The emphasis in this report is on First and Second Summer Sessions 2008 enrollment and historical information. Much of the information contained in the *Summary of Summer Sessions 2008 Enrollment Report Update* results from the analysis of data collected from detailed enrollment statistical reports.

First Summer Session is six weeks in length and includes two intensive sessions: Intensive I and Intensive II. In order that enrollment statistics reflect these intensive session registrations, official enrollment for First Summer Session is reported after Intensive II Late Schedule Adjustment on May 28. Second Summer Session is eight weeks in length and includes three intensive sessions: Intensive III, Intensive IV and Intensive V. Data for Second Summer Session are captured following Intensive Session V Late Schedule Adjustment on July 24. For the two major sessions, official enrollment data are captured approximately mid-way through the session, and are thus referred to as Midsession throughout this report.

Data definitions and methods of calculation are explained throughout this report. Our selections of analytical approaches are not the only ones possible. The collective use of simple formulas to meet all the data needs at a complex institution is not attainable. If you encounter data other than what appears in this publication, you should probe for the data source, the methodology used to produce the results, and the intended use of the data.

Suggestions or comments for improvements of this publication are welcome.

Contributors:

Roland A. Coté
Registrar

Linda Shepard
Senior Associate Registrar

Barbara Bunch
Research
Programmer/Analyst

Mike Sauer
Senior Research
Programmer/Analyst

Erika Knudsen
Data Management
Analyst/Consultant

Donna Rinckel
Enrollment Information Coordinator

Adam Leary
Research Analyst

Office of the Registrar
Indiana University
Franklin Hall, Room 234
601 East Kirkwood Avenue
Bloomington, Indiana 47405-1223
(812)855-2654
August 20, 2008

TABLE OF CONTENTS

TERMINOLOGY	1
HISTORICAL ENROLLMENT SUMMARY	4
SUMMER TERM 2008 OVERVIEW	5
FIRST SUMMER SESSION	
CAMPUS LEVEL ENROLLMENT	
HEADCOUNT BY STUDENT LEVEL	8
AUDIT ENROLLMENTS	11
CREDIT HOUR LOAD	12
GENDER	13
ETHNIC GROUPS	15
RESIDENCE CLASSIFICATION	21
STUDENT SCHOOL ENROLLMENT	
HEADCOUNT BY STUDENT SCHOOL	23
CREDIT HOUR LOAD (SCHOOL).....	25
COURSE INFORMATION	
CREDIT HOURS AND COURSE ENROLLMENTS	27
COLLEGE DEPARTMENTS	32
GRADE DISTRIBUTION - HISTORICAL	34
SECOND SUMMER SESSION	
CAMPUS LEVEL ENROLLMENT	
HEADCOUNT BY STUDENT LEVEL	38
AUDIT ENROLLMENTS	41
CREDIT HOUR LOAD	42
GENDER	43
ETHNIC GROUPS	45
RESIDENCE CLASSIFICATION	51
STUDENT SCHOOL ENROLLMENT	
HEADCOUNT BY STUDENT SCHOOL	53
CREDIT HOUR LOAD (SCHOOL).....	55
COURSE INFORMATION	
CREDIT HOURS AND COURSE ENROLLMENTS	57
COLLEGE DEPARTMENTS	61
GRADE DISTRIBUTION - HISTORICAL	63
PEER INSTITUTIONS	66
DEGREES CONFERRED	68

TERMINOLOGY

Data contained in these reports are for operational planning purposes. If official enrollment figures are needed for Indiana University-Bloomington, please consult the University Reporting and Research office (<http://www.indiana.edu/~urr>).

In the fall of 2004, IU implemented a new Student Information System (SIS) consisting of the implementation of both operational (SIS) and reporting and retrieval (IUIE) environments. This conversion has had a profound impact on business processes, terminology and data structures. For analysis and reporting, comparability is often not attainable and has been noted throughout the report. In some cases, the terminology used in SIS is not directly comparable to terms used in our academic businesses (e.g., a program/plan in SIS is a department/major in our academic world). These general definitions are provided here as a central point of reference.

REPORTING DEFINITIONS

Enrollment Totals:

All reports, unless otherwise noted, use the official reporting period, which has been the midsession for the two summer sessions. While the new SIS environment recognizes summer as one term, for reporting and historical comparisons, the two summer session model has been recreated. The campus enrollment total provides a unique headcount of students in each summer session.

School Enrollment Totals:

Beginning Spring Term 2005, students can be enrolled in dual careers (e.g., MBA/LAW students are in Graduate and Law careers). Students enrolled in multiple careers are counted under each school, so MBA/LAW students will be counted in both Business and Law. Since these students are counted under each school/career, the totals by school will not match the campus total (which is a unique student headcount). This report has been divided into two sections to help distinguish campus level from school level enrollments.

Auditors:

Students registered for audit enrollments, not taking any course for credit, are considered auditors. Since Fall 1988, these students have been excluded from Bloomington headcount figures and their enrollments have been excluded from course enrollment figures.

Credit Hours and Course Enrollments:

Only course credit-bearing sections are included in credit hour and course enrollment totals. While the credit-bearing section is typically the lecture section of a course, there are instances where the credit is assigned to the discussion or lab section. Audit hours, waitlisted hours, and dropped hours are not included in the totals.

Course School:

The school in which a course is taught is considered the course school. For example, BUS-A100 is taught in the course school of Business and Math-M118 is taught in the course school of Arts and Sciences. University Division does not offer any courses and therefore is not a course school.

Student School:

The school that houses the student's major is considered a student school. In this case, University Division is considered a student school. However, Military Sciences offers courses and is considered a course school but it does not offer majors, so it is not considered a student school.

Student Level:

For reporting purposes, students are classified into the following levels of study: Undergraduate, Graduate, Professional, and Nondegree. This is similar to the SIS terminology of student career; however, the professional student level contains the careers of Law and Optometry. Also, nondegree students are not discernable when using the SIS definition of a career.

Full-time/Part-time Status:

For each summer session, full-time students are defined as undergraduate, professional and nondegree students enrolled in six or more hours and graduate students enrolled in four or more hours.

Credit Hour Load:

In the summer, Indiana University uses a per-credit-hour fee structure. In the fall and spring terms, a flat-fee structure is used for undergraduate students.

Term:

A term refers to the specific length of time a student is enrolled in a particular course. Previously, Indiana University had two semesters, and two summer sessions (1 eight week, 1 six week) per academic year. The nomenclature for semester within the SIS system is "term". Currently, Indiana University has three terms, Fall, Spring, and Summer. For reporting purposes, the summer term has been divided into the traditional two summer sessions.

Session:

The summer term is broken down into two major sessions: Summer 1 which is six weeks in length and Summer 2 which is eight weeks. Also in summer term are five intensive sessions: Intensive I and II are included with Summer 1, while Intensive III, IV, and V are within Summer 2.

Major:

A major refers to the student's academic course of study. Students can enroll in multiple majors at once, as long as they finish all the requirements for each before graduation. In SIS, majors are called Academic Plans; however Academic Plans can also refer to minors and certificates. For reporting majors, only plan-types of major are included.

Course Department:

A course department refers to the department which offers the course. In SIS, course departments are stored as part of the subject area. The course department is represented as the first three or four letters of a course number (e.g., FRIT-F100 is housed in the department of FRIT or French and Italian).

School Abbreviations:

COLL: The College of Arts and Sciences
GRAD: The Graduate School
HPER: School of Health, Physical Education, and Recreation
SCS: School of Continuing Studies
SLIS: School of Library and Information Science
SPEA: School of Public and Environmental Affairs

IEP:

Intensive English Program (formerly CELT, Center for English Language Training). This is a nondegree program that enrolls international students in zero-credit courses to improve their English comprehension.

GPA (Grade Point Average):

This can refer to either the student's cumulative grade point average over all terms or it can refer to the grade point

Useful Websites:

Course and Section Enrollments

<http://www.indiana.edu/~registra/coursesectn/>

Grade Distribution Report

<http://www.indiana.edu/~registra/gradedist/>

Special Course Listings

<http://registrar.indiana.edu/~registra/specialcourse.shtml>

Comparative Enrollment (*CAS Required*)

[http:// http://registrar.indiana.edu/dma/comp.shtml](http://registrar.indiana.edu/dma/comp.shtml)

HISTORICAL ENROLLMENT SUMMARY
FIRST SUMMER SESSIONS

ENROLLMENT:	1997	1998	1999	2000	2001	2002	2003	2004	2005	2006	2007	2008
Freshman	160	179	139	162	165	176	129	115	140	128	98	83
Sophomore	779	860	801	708	909	893	866	741	709	691	781	840
Junior	1,824	1,833	1,901	1,989	1,917	2,211	1,992	1,952	1,852	1,698	1,888	2,074
Senior	3,327	3,263	3,267	3,189	3,420	3,425	3,575	3,383	3,300	3,255	3,060	3,182
UNDERGRADUATE	6,090	6,135	6,108	6,048	6,411	6,705	6,562	6,191	6,001	5,772	5,827	6,179
GRADUATE	1,788	1,739	1,760	1,594	1,637	1,611	1,638	1,651	1,697	1,728	1,713	1,632
PROFESSIONAL	343	361	328	327	395	311	315	292	358	374	367	337
NONDEGREE/UNCLASSIFIED	798	595	555	551	616	464	516	525	427	375	738	562
TOTAL	9,019	8,830	8,751	8,520	9,059	9,091	9,031	8,659	8,483	8,249	8,645	8,710
% NONRESIDENT	36.0%	34.4%	36.1%	37.3%	37.3%	36.2%	38.0%	39.7%	39.8%	39.8%	40.9%	44.2%
% FULL-TIME	45.4%	47.3%	50.7%	50.3%	51.4%	52.1%	51.1%	50.8%	n/a	48.7%	45.1%	45.8%
% US MINORITY	10.7%	10.9%	10.9%	10.7%	10.6%	10.4%	10.5%	10.5%	11.0%	11.3%	11.6%	11.4%
CREDIT HOURS	40,319.0	40,547.0	40,604.5	39,477.5	42,034.0	43,016.5	42,252.0	40,721.0	38,992.5	40,373.5	40,499.5	41,049.5
COURSE ENROLLMENTS	14,786	14,623	14,698	14,113	15,322	15,312	15,073	14,572	n/a	13,523	13,582	13,817

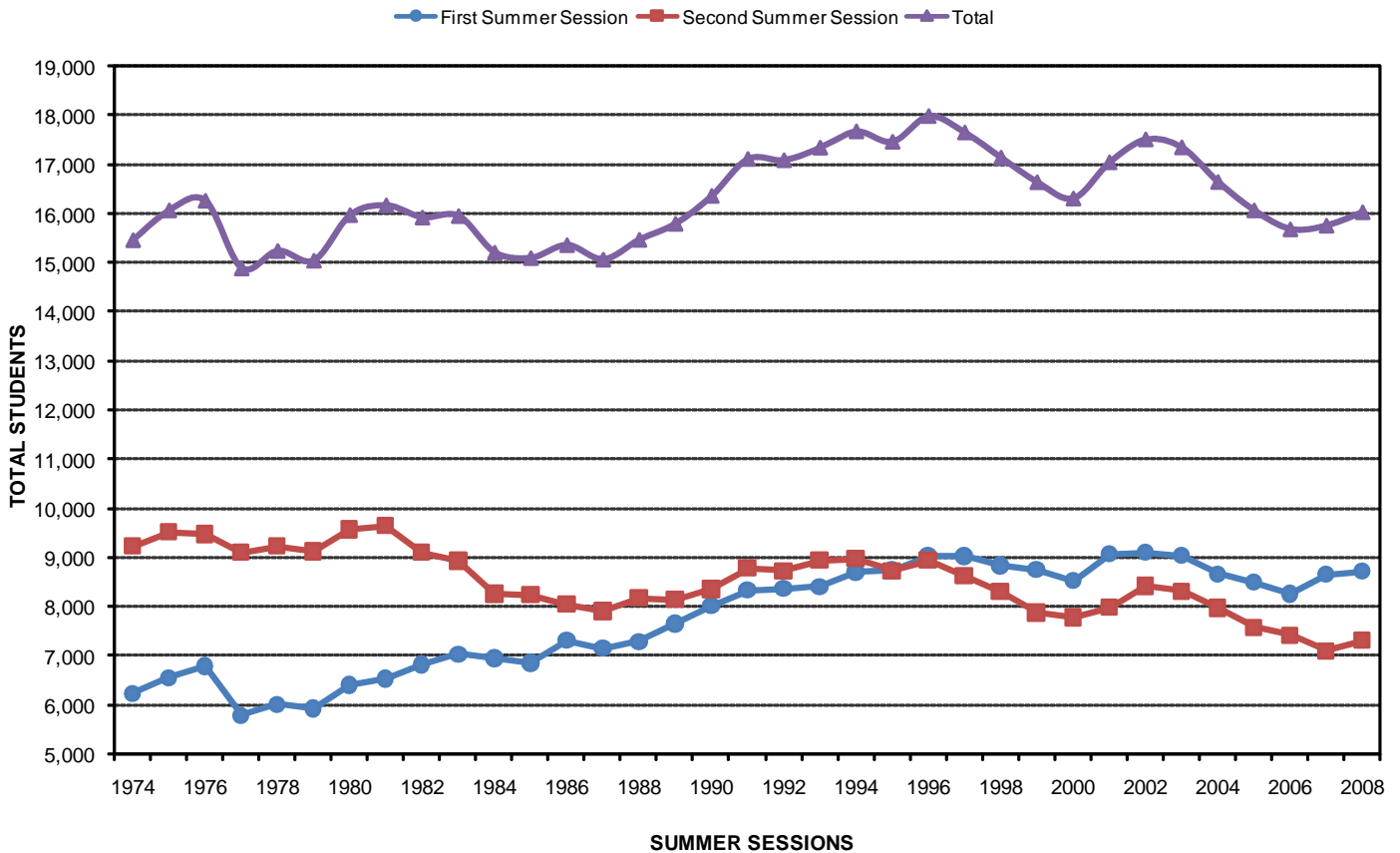
SECOND SUMMER SESSIONS

ENROLLMENT:	1997	1998	1999	2000	2001	2002	2003	2004	2005	2006	2007	2008
Freshman	621	659	621	635	650	799	705	645	684	652	640	667
Sophomore	498	507	507	409	461	514	489	397	427	478	457	443
Junior	1,241	1,166	1,065	1,047	1,030	1,235	1,189	1,157	1,197	989	1,032	1,098
Senior	2,549	2,484	2,311	2,185	2,264	2,423	2,542	2,404	2,075	1,994	1,836	1,777
UNDERGRADUATE	4,909	4,816	4,504	4,276	4,405	4,971	4,925	4,603	4,383	4,113	3,965	3,985
GRADUATE	2,087	2,064	1,936	1,825	1,931	1,852	1,935	1,851	1,880	1,886	1,900	1,923
PROFESSIONAL	342	366	335	343	372	353	295	309	143	146	181	111
NONDEGREE/UNCLASSIFIED	1,294	1,063	1,112	1,342	1,276	1,242	1,162	1,219	1,175	1,283	1,061	1,296
TOTAL	8,632	8,309	7,887	7,786	7,984	8,418	8,317	7,982	7,581	7,428	7,107	7,315
% NONRESIDENT	38.7%	38.1%	38.1%	38.8%	38.4%	37.6%	39.0%	39.3%	39.3%	42.5%	42.5%	43.2%
% FULL-TIME	39.0%	38.9%	43.4%	40.5%	45.4%	44.5%	44.3%	45.0%	n/a	38.4%	37.7%	37.4%
% US MINORITY	12.1%	12.9%	12.4%	12.6%	13.1%	12.8%	11.7%	13.0%	13.6%	13.4%	13.9%	13.8%
CREDIT HOURS	37,634.5	36,705.0	35,289.5	33,664.0	35,626.5	38,127.0	37,564.0	36,817.0	33,614.5	31,088.0	29,758.5	30,532.0
COURSE ENROLLMENTS	13,719	13,542	12,843	12,731	13,497	14,122	13,892	13,541	n/a	11,378	10,898	11,104

SUMMER TERM 2008 OVERVIEW

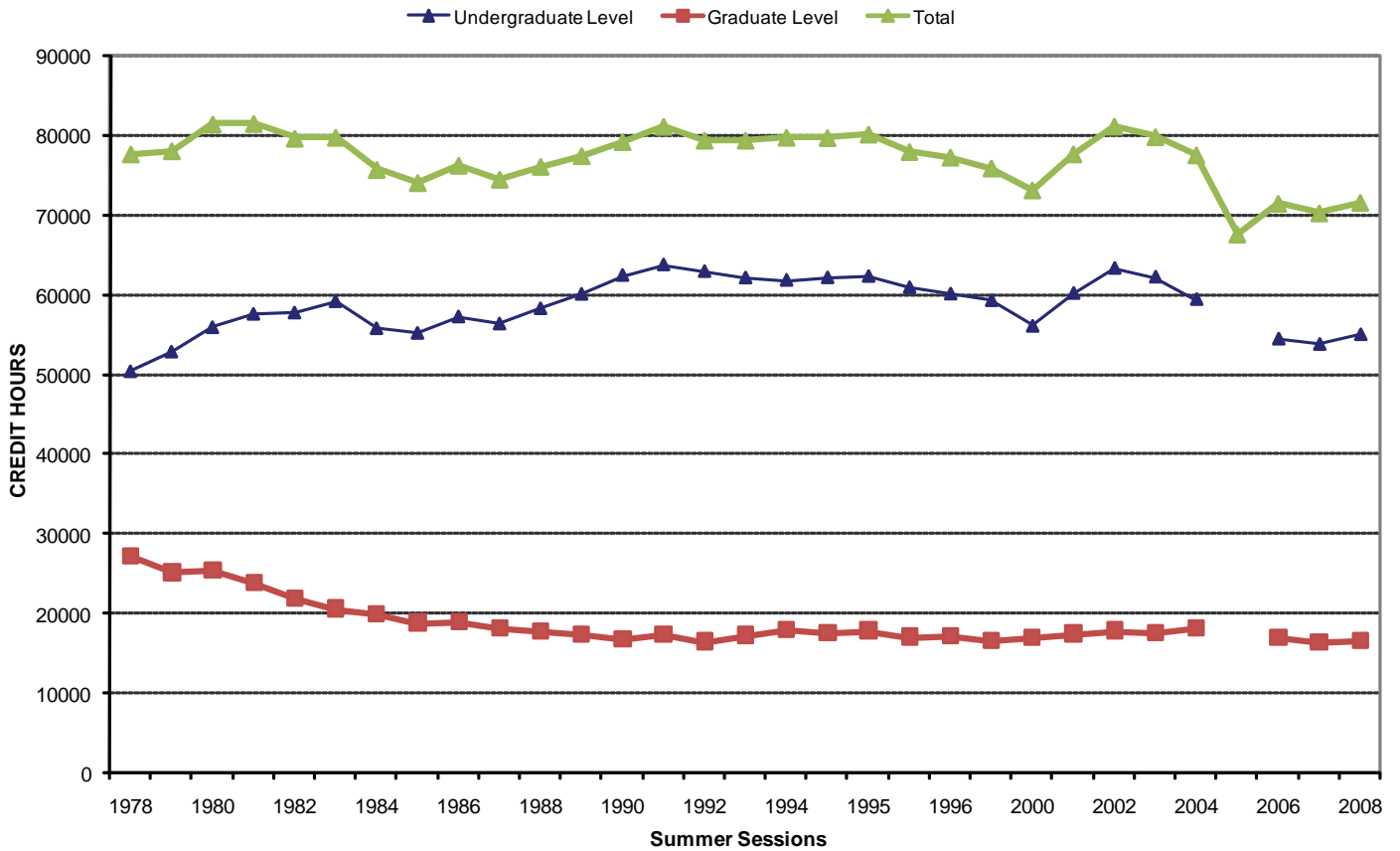
This year, there is a slight increase for the totals of first and second summer sessions, the second year in a row. While historically, second summer session enrollments are higher than first summer session enrollments, beginning in 1996, first summer session enrollments are higher than second summer session enrollments. The following figure shows total enrollment for summer sessions since 1974.

FIGURE 1: TOTAL ENROLLMENT



The following graph shows the sum of first and second summer session credit hours from 1978 to the present. For 2005, credit hour data by course level are not available. Total credit hours generated for first and second summer sessions (71,581.5) show an increase for this 2008.

FIGURE 2: CREDIT HOURS BY COURSE LEVEL



FIRST SUMMER SESSION

HEADCOUNT BY STUDENT LEVEL

First Summer Session 2008 shows an increase in enrollment from last year due to a substantial increase in undergraduates. The increase in undergraduates offsets the decreases in enrollments for graduate, professional, and nondegree students for a 0.8% total increase in enrollment.

TABLE 1: ENROLLMENT BY STUDENT LEVEL AND CLASS

Class Level	First Summer Sessions		Change	Percent Change
	2007	2008		
Freshman	98	83	- 15	- 15.3%
Sophomore	781	840	+ 59	+ 7.6%
Junior	1,888	2,074	+ 186	+ 9.9%
Senior	3,060	3,182	+ 122	+ 4.0%
Undergraduate Total	5,827	6,179	+ 352	+ 6.0%
Masters	878	816	- 62	- 7.1%
Doctoral	835	816	- 19	- 2.3%
Graduate Total	1,713	1,632	- 81	- 4.7%
Professional Total	367	337	- 30	- 8.2%
High School	2	1	- 1	- 50.0%
Special Undergraduate	362	316	- 46	- 12.7%
Special Graduate	374	245	- 129	- 34.5%
Nondegree Total	738	562	- 176	- 23.8%
TOTAL	8,645	8,710	+ 65	+ 0.8%

The following table shows the registration patterns for summer classes. The trend has been to register after CSR (Continuing Student Registration) in March. This year 45.8% of the First Summer Session enrollment had registered by the end of CSR, compared to 65.0% five years ago. Some of this fluctuation is due to the registrations for students in special programs rather than a change in student registration behavior.

TABLE 2: NET ENROLLMENT BY REGISTRATION PERIOD

First Summer Sessions	End of CSR		First Day of Classes		Midsession
	Number Enrolled	Percent	Number Enrolled	Percent	Number Enrolled
1997	6,264	69.5%	8,633	95.7%	9,019
1998	5,866	66.4%	8,707	98.6%	8,830
1999	5,750	65.7%	8,523	97.4%	8,751
2000	5,563	65.3%	8,364	98.2%	8,520
2001	5,668	62.6%	8,797	97.1%	9,059
2002	5,924	65.2%	9,041	99.5%	9,091
2003	5,866	65.0%	8,987	99.5%	9,031
2004	5,438	62.8%	8,597	99.3%	8,659
2005	4,434	52.3%	8,080	95.2%	8,483
2006	3,960	48.0%	8,076	97.9%	8,246
2007	4,000	46.3%	8,335	96.4%	8,645
2008	3,993	45.8%	8,356	95.9%	8,710

The following table shows enrollment by student level since 1977.

TABLE 3: ENROLLMENT BY STUDENT LEVEL

First Summer Sessions	Undergraduate Total	Graduate Total	Professional Total	Nondegree/ Unclassified Total	Total
1977	3,520	1,989	78	192	5,779
1978	3,772	1,914	56	264	6,006
1979	3,910	1,778	54	174	5,916
1980	4,180	1,880	55	280	6,395
1981	4,309	1,860	54	299	6,522
1982	4,496	1,817	100	402	6,815
1983	4,687	1,821	111	398	7,017
1984	4,577	1,823	134	404	6,938
1985	4,697	1,713	121	312	6,843
1986	4,883	1,755	140	527	7,305
1987	4,801	1,717	166	457	7,141
1988	4,983	1,693	152	457	7,285
1989	5,257	1,655	124	604	7,640
1990	5,572	1,667	120	642	8,001
1991	5,797	1,678	128	725	8,328
1992	5,777	1,639	243	697	8,356
1993	5,811	1,659	239	693	8,402
1994	5,914	1,720	314	754	8,702
1995	5,976	1,674	334	743	8,727
1996	6,069	1,844	322	807	9,042
1997	6,090	1,788	343	798	9,019
1998	6,135	1,739	361	595	8,830
1999	6,108	1,760	328	555	8,751
2000	6,048	1,594	327	551	8,520
2001	6,411	1,637	395	616	9,059
2002	6,705	1,611	311	464	9,091
2003	6,562	1,638	315	516	9,031
2004	6,191	1,651	292	525	8,659
2005	6,001	1,697	358	427	8,483
2006	5,772	1,728	374	375	8,249
2007	5,827	1,713	367	738	8,645
2008	6,179	1,632	337	562	8,710

Notes:

1. Shaded areas indicate record high figures since data were first available in 1977.
2. Effective Fall 1988, auditors (students enrolled in audit hours only) are excluded from headcount figures. Effective Summer 1989, associate level Optometry students are reported in the undergraduate headcount. Previously, all Optometry students were reported in the professional headcount.
3. Effective Summer 1992, Law students could register for both summer sessions. Previously, Law registrations were processed for second summer sessions only.

The following table shows share of enrollment by student level since 1977. For First Summer Session 2008, the undergraduate (70.9%) share is up while the graduate (18.7%), professional (3.9%), and nondegree (6.5%) shares are down from the shares reported last year.

TABLE 4: SHARE OF ENROLLMENT BY STUDENT LEVEL

First Summer Sessions	Undergraduate Total	Graduate Total	Professional Total	Nondegree/ Unclassified Total	Total
1977	60.9%	34.4%	1.3%	3.3%	99.9%
1978	62.8%	31.9%	0.9%	4.4%	100.0%
1979	66.1%	30.1%	0.9%	2.9%	100.0%
1980	65.4%	29.4%	0.9%	4.4%	100.1%
1981	66.1%	28.5%	0.8%	4.6%	100.0%
1982	66.0%	26.7%	1.5%	5.9%	100.1%
1983	66.8%	26.0%	1.6%	5.7%	100.1%
1984	66.0%	26.3%	1.9%	5.8%	100.0%
1985	68.6%	25.1%	1.8%	4.6%	100.1%
1986	66.8%	24.0%	1.9%	7.2%	99.9%
1987	67.2%	24.0%	2.3%	6.4%	99.9%
1988	68.4%	23.2%	2.1%	6.3%	100.0%
1989	68.8%	21.7%	1.6%	7.9%	100.0%
1990	69.6%	20.8%	1.5%	8.0%	99.9%
1991	69.6%	20.1%	1.5%	8.6%	99.8%
1992	69.1%	19.6%	2.9%	8.3%	99.9%
1993	69.2%	19.7%	2.8%	8.2%	99.9%
1994	68.0%	19.8%	3.6%	8.7%	100.1%
1995	68.5%	19.2%	3.8%	8.5%	100.0%
1996	67.1%	20.4%	3.6%	8.9%	100.0%
1997	67.5%	19.8%	3.8%	8.8%	99.9%
1998	69.5%	19.7%	4.1%	6.7%	100.0%
1999	69.8%	20.1%	3.7%	6.3%	99.9%
2000	71.0%	18.7%	3.8%	6.5%	100.0%
2001	70.8%	18.1%	4.4%	6.8%	100.1%
2002	73.8%	17.7%	3.4%	5.1%	100.0%
2003	72.7%	18.1%	3.5%	5.7%	100.0%
2004	71.5%	19.1%	3.4%	6.1%	100.0%
2005	70.7%	20.0%	4.2%	5.0%	100.0%
2006	70.0%	20.9%	4.5%	4.5%	100.0%
2007	67.4%	19.8%	4.2%	8.5%	100.0%
2008	70.9%	18.7%	3.9%	6.5%	100.0%

Notes:

1. Shaded areas indicate record high figures since data were first available in 1977.
2. Effective Fall 1988, auditors (students enrolled in audit hours only) are excluded from headcount figures. Effective Summer 1989, associate level Optometry students are reported in the undergraduate headcount. Previously, all Optometry students were reported in the professional headcount.
3. Effective Summer 1992, Law students could register for both summer sessions. Previously, Law registrations were processed for second summer sessions only.

AUDIT ENROLLMENTS

Auditors are defined as students registered for audit enrollments only. Auditing students are defined as students who are auditing one or more courses, regardless of whether they are also enrolled in courses for credit. Audit enrollments and audit hours are the total number of course spaces and enrollment hours accounted for by auditors and auditing students. Effective Fall 1988, auditors are excluded from Bloomington campus headcount figures and all audit enrollments are excluded from course enrollment figures. Audit data were first available in 1987. An audit summary for First Summer Sessions 2007 and 2008 is shown below. Audit enrollments by course school are shown in Table 6.

For First Summer Session 2008, the number of auditors (8) shows a decrease while the number of auditing students shows an increase.

TABLE 5: AUDIT ENROLLMENTS

	First Summer Sessions		Change	Percent Change
	2007	2008		
Students				
Auditors	14	8	- 6	- 42.9%
Auditing Students	11	13	+ 2	+ 18.2%
Audit Enrollments				
by Auditors	16	10	- 6	- 37.5%
by Auditing Students	12	15	+ 3	+ 25.0%
Audit Hours				
by Auditors	47.5	25.5	- 22.0	- 46.3%
by Auditing Students	16.0	41.0	+ 25.0	+ 156.3%

TABLE 6: AUDIT ENROLLMENTS BY COURSE SCHOOL AND DEPARTMENT

School/Department	First Summer Sessions	
	2007	2008
Arts and Sciences		
Biology	0	2
Economics	0	1
English	1	1
French and Italian	0	2
German	5	0
History	0	1
Mathematics	2	3
Near Eastern Lang. & Cultures	1	0
Religious Studies	1	0
Spanish & Portuguese	5	1
Speech & Hearing Sciences	10	0
Arts and Sciences Total	25	11
Education	1	3
HPER	0	2
Informatics	1	3
Library & Info Science	1	6
TOTAL AUDIT ENROLLMENTS	28	25

CREDIT HOUR LOAD

The average credit hour load for First Summer Session 2008 is 4.71, a 0.03 credit hour increase from last year. The credit hour load increase is solely due to the increase in the professional credit hour load, which increased 0.61 credit hours. The undergraduate, graduate, and nondegree loads all report decreases this summer session (-0.04, -0.22, and -0.08, respectively). Within the undergraduate level, the average credit hour load for seniors is the second highest figure on record (since data were first available in 1976).

TABLE 7: HISTORICAL AVERAGE CREDIT HOUR LOAD

First Summer Sessions	Freshman	Sophomore	Junior	Senior	Undergraduate Total	Graduate	Professional	Non-Degree/Unclassified	Total
1976	4.68	4.87	5.12	5.14	5.05	4.17	4.22	4.28	4.66
1977	4.40	4.67	5.26	5.07	5.01	4.12	3.35	3.15	4.62
1978	4.71	4.87	5.40	5.25	5.20	4.01	3.18	2.80	4.70
1979	4.68	4.99	5.63	5.31	5.32	4.05	2.83	3.10	4.85
1980	4.41	4.79	5.40	5.16	5.12	4.06	2.98	2.62	4.68
1981	4.60	4.63	5.41	5.22	5.14	4.12	3.83	3.60	4.77
1982	4.52	4.58	5.20	5.21	5.05	3.95	5.12	2.88	4.63
1983	4.63	4.76	5.23	5.14	5.08	4.06	4.94	3.07	4.70
1984	4.37	4.69	5.21	5.08	5.04	3.96	4.56	4.21	4.70
1985	4.67	4.68	5.06	5.12	5.02	3.75	4.62	3.51	4.63
1986	4.50	4.83	5.39	5.15	5.16	3.95	4.41	3.81	4.76
1987	4.52	4.94	5.15	5.13	5.09	4.00	4.00	3.81	4.72
1988	4.47	4.70	5.12	5.08	5.01	4.03	1.80	3.74	4.70
1989	4.57	4.58	5.19	5.04	5.03	4.07	4.19	3.63	4.70
1990	4.36	4.67	5.17	5.10	5.04	4.07	4.19	3.38	4.69
1991	4.51	4.47	5.02	4.98	4.91	4.04	4.43	3.21	4.58
1992	4.42	4.56	2.00	4.07	4.97	3.98	3.81	3.16	4.59
1993	4.38	4.43	4.76	4.93	4.81	3.86	4.45	3.05	4.47
1994	4.33	4.47	4.84	5.03	4.89	3.86	4.77	2.72	4.49
1995	4.64	4.68	4.89	5.07	4.95	3.78	4.53	3.00	4.54
1996	4.72	4.69	4.94	5.14	5.01	3.50	4.60	2.41	4.45
1997	4.49	4.72	5.04	5.18	5.06	3.46	4.43	2.24	4.47
1998	4.35	4.83	5.03	5.22	5.08	3.51	4.97	2.47	4.59
1999	4.64	4.87	5.08	5.24	5.13	3.54	5.02	2.51	4.64
2000	4.71	4.82	4.99	5.20	5.08	3.56	5.06	2.64	4.63
2001	4.64	4.85	5.14	5.28	5.16	3.43	4.92	2.28	4.64
2002	4.77	4.83	5.13	5.19	5.11	3.65	5.38	2.57	4.73
2003	4.53	4.83	5.07	5.17	5.09	3.54	4.93	2.95	4.68
2004	5.06	4.81	5.12	5.19	5.12	3.61	5.03	3.06	4.70
2005	4.11	4.61	5.07	5.05	4.99	3.63	4.48	3.12	4.60
2006	4.18	4.60	5.61	5.49	5.38	3.51	4.47	4.27	4.89
2007	4.24	4.60	5.56	5.40	5.33	3.45	4.07	2.78	4.68
2008	4.25	4.67	5.40	5.41	5.29	3.23	4.68	2.70	4.71
Change from Last Year	0.0	+ 0.07	- 0.16	+ 0.01	- 0.04	- 0.22	+ 0.61	- 0.08	+ 0.03

Note: Shaded areas indicate record highs since data were first available in 1976.

GENDER

For First Summer Session 2008, the total number of female students (4,468) shows an increase from last year. The number of undergraduate female students (2,995) is up, while female populations at all other levels show decreases. The number of nondegree females has decreased from the record high set last year.

The number of male students, at 4,242, is up this year, due to an increase at the undergraduate level. Male students at the graduate, professional, and nondegree levels show decreases from last year.

TABLE 8: ENROLLMENT BY GENDER

First Summer Sessions	Undergraduate		Graduate		Professional		Nondegree		Total	
	Female	Male	Female	Male	Female	Male	Female	Male	Female	Male
1986	2,531	2,352	895	861	56	84	277	249	3,759	3,546
1987	2,605	2,196	884	833	82	84	261	196	3,832	3,309
1988	2,752	2,231	892	800	74	78	265	192	3,983	3,301
1989	2,852	2,405	841	814	61	63	303	300	4,057	3,582
1990	3,046	2,526	849	818	58	62	330	312	4,283	3,718
1991	3,127	2,670	857	821	68	60	342	383	4,394	3,934
1992	3,104	2,673	826	813	120	123	361	336	4,411	3,945
1993	3,103	2,708	901	758	117	122	364	329	4,485	3,917
1994	3,156	2,758	921	799	150	164	387	367	4,614	4,088
1995	3,140	2,836	907	767	165	169	415	328	4,627	4,100
1996	3,273	2,796	981	863	160	162	444	363	4,858	4,184
1997	3,252	2,838	970	818	161	182	432	366	4,815	4,204
1998	3,312	2,823	914	825	180	181	319	276	4,725	4,105
1999	3,274	2,834	958	802	166	162	285	270	4,683	4,068
2000	3,189	2,859	851	743	160	167	294	257	4,494	4,026
2001	3,368	3,043	899	738	194	201	359	257	4,820	4,239
2002	3,416	3,289	898	713	160	151	260	204	4,734	4,357
2003	3,295	3,267	901	737	167	148	296	220	4,659	4,372
2004	3,046	3,145	922	729	154	138	304	221	4,426	4,233
2005	2,974	3,027	957	740	198	160	265	162	4,394	4,089
2006	2,897	2,875	1,005	723	203	171	236	139	4,341	3,908
2007	2,827	3,000	964	749	199	168	458	280	4,448	4,197
2008	2,995	3,184	937	695	180	157	356	206	4,468	4,242
Change from Last Year	+ 168	+ 184	- 27	- 54	- 19	- 11	- 102	- 74	+ 20	+ 45
	+ 5.9%	+ 6.1%	- 2.8%	- 7.2%	- 9.5%	- 6.5%	- 22.3%	- 26.4%	+ 0.4%	+ 1.1%

Note: Shaded areas indicate record high figures since 1986.

The share for undergraduate female and male students stayed the same as last year. The share of all female students (51.3%) show a slight decrease from last year, while the share of male students (48.7%) is up. Undergraduate male, professional female, and nondegree female shares are at record-high levels.

TABLE 9: SHARE OF ENROLLMENT BY GENDER

First Summer Sessions	Undergraduate		Graduate		Professional		Nondegree		Total	
	Female	Male	Female	Male	Female	Male	Female	Male	Female	Male
1986	51.8%	48.2%	51.0%	49.0%	40.0%	60.0%	52.7%	47.3%	51.5%	48.5%
1987	54.3%	45.7%	51.5%	48.5%	49.4%	50.6%	57.1%	42.9%	53.7%	46.3%
1988	55.2%	44.8%	52.7%	47.3%	48.7%	51.3%	58.0%	42.0%	54.7%	45.3%
1989	54.3%	45.7%	50.8%	49.2%	49.2%	50.8%	50.2%	49.8%	53.1%	46.9%
1990	54.7%	45.3%	50.9%	49.1%	48.3%	51.7%	51.4%	48.6%	53.5%	46.5%
1991	53.9%	46.1%	51.1%	48.9%	53.1%	46.9%	47.2%	52.8%	52.8%	47.2%
1992	53.7%	46.3%	50.4%	49.6%	49.4%	50.6%	51.8%	48.2%	52.8%	47.2%
1993	53.4%	46.6%	54.3%	45.7%	49.0%	51.0%	52.5%	47.5%	53.4%	46.6%
1994	53.4%	46.6%	53.5%	46.5%	47.8%	52.2%	51.3%	48.7%	53.0%	47.0%
1995	52.5%	47.5%	54.2%	45.8%	49.4%	50.6%	55.9%	44.1%	53.0%	47.0%
1996	53.9%	46.1%	53.2%	46.8%	49.7%	50.3%	55.0%	45.0%	53.7%	46.3%
1997	53.4%	46.6%	54.3%	45.7%	46.9%	53.1%	54.1%	45.9%	53.4%	46.6%
1998	54.0%	46.0%	52.6%	47.4%	49.9%	50.1%	53.6%	46.4%	53.5%	46.5%
1999	53.6%	46.4%	54.4%	45.6%	50.6%	49.4%	51.4%	48.6%	53.5%	46.5%
2000	52.7%	47.3%	53.4%	46.6%	48.9%	51.1%	53.4%	46.6%	52.7%	47.3%
2001	52.5%	47.5%	54.9%	45.1%	49.1%	50.9%	58.3%	41.7%	53.2%	46.8%
2002	50.9%	49.1%	55.7%	44.3%	51.4%	48.6%	56.0%	44.0%	52.1%	47.9%
2003	50.2%	49.8%	55.0%	45.0%	53.0%	47.0%	57.4%	42.6%	51.6%	48.4%
2004	49.2%	50.8%	55.8%	44.2%	52.7%	47.3%	57.9%	42.1%	51.1%	48.9%
2005	49.6%	50.4%	56.4%	43.6%	55.3%	44.7%	62.1%	37.9%	51.8%	48.2%
2006	50.2%	49.8%	58.2%	41.8%	54.3%	45.7%	62.9%	37.1%	52.6%	47.4%
2007	48.5%	51.5%	56.3%	43.7%	54.2%	45.8%	62.1%	37.9%	51.5%	48.5%
2008	48.5%	51.5%	57.4%	42.6%	53.4%	46.6%	63.3%	36.7%	51.3%	48.7%

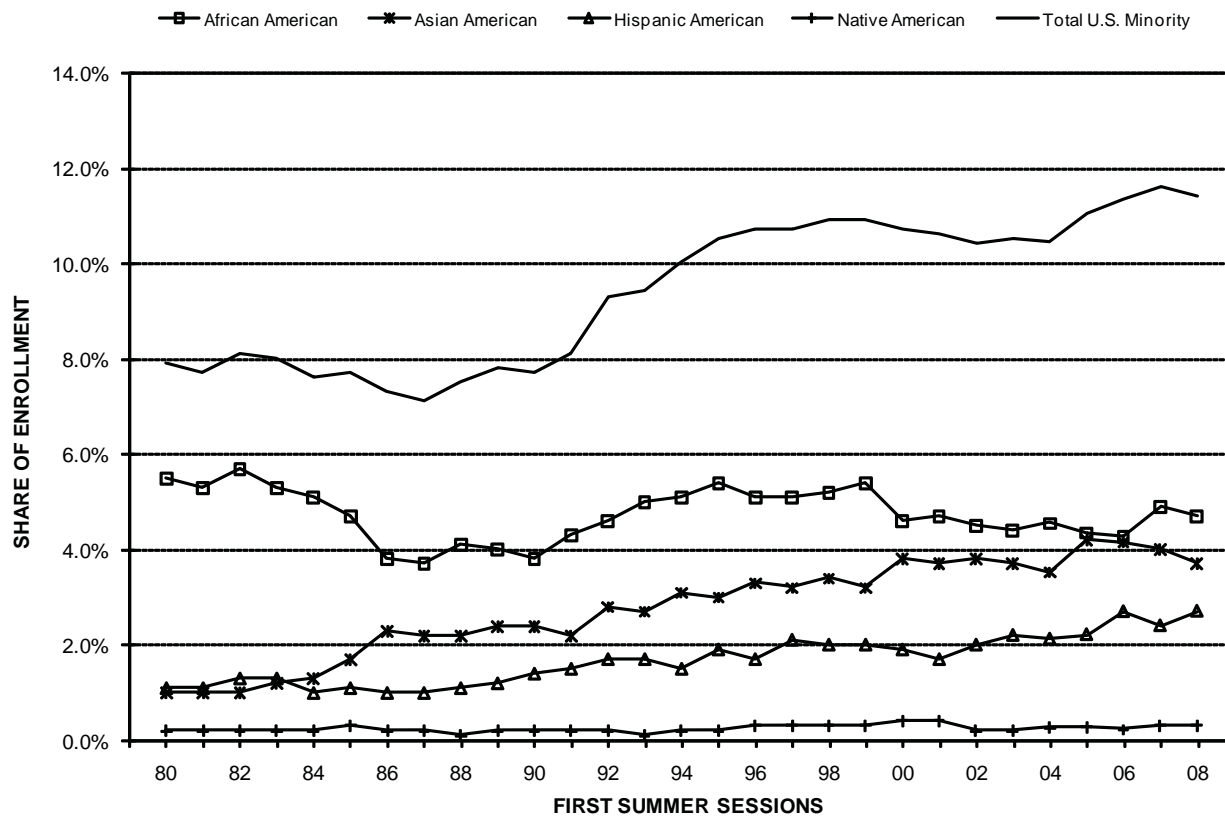
Note: Shaded areas indicate record high figures since 1986.

ETHNIC GROUPS

Ethnic group is self-reported by students who attend Indiana University-Bloomington. In addition, students have the option to exclude ethnic information and may request its removal from all records. Indiana University reports ethnic information to the U.S. Department of Education and complies with Title VI of the Civil Rights Act of 1964 and Title IX of the Education Amendment of 1972. Ethnic data have been collected at Indiana University-Bloomington since 1973.

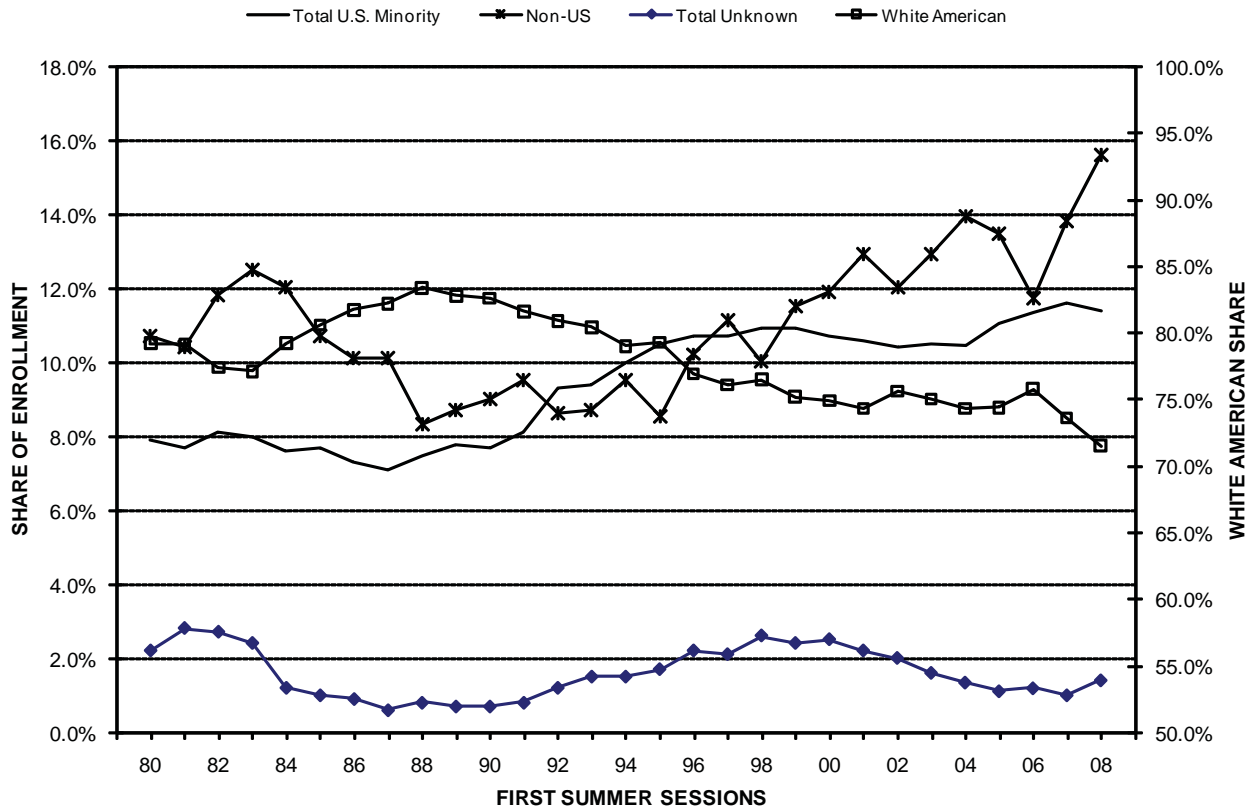
For First Summer Session 2008, the total US minority share (11.4%) shows a decrease from the record-high share reported last year (11.6%). This decrease is due to decreases in the shares of African Americans (4.7%) and Asian Americans (3.7%). The share of Hispanic Americans shows an increase, while the share of Native Americans remains the same as last year.

FIGURE 3: U.S. MINORITY SHARE OF ENROLLMENT



The following figure shows shares of total enrollment by ethnic group. The Non-US share is up 1.8 percent, and is a new record-high figure (15.6%). The share of White Americans is lower than last year, while the share of Unknown students is higher than last year. The Unknown category is comprised of students who refuse to provide ethnic information, students who are considered “Other American” (often representing individuals from more than one race), and students whose ethnic origin has not yet been collected.

FIGURE 4: SHARE OF ENROLLMENT BY ETHNIC GROUP



The following tables show enrollment and share by ethnic group. Hispanic American enrollment (232) shows a new record high this summer, as does the Non-US population (1,360 students).

TABLE 10: ENROLLMENT BY ETHNIC GROUP

First Summer Sessions	African American	Asian American	Hispanic American	Native American	Total Minority	White	Non-U.S.	Other American	Refused & Uncoded	Total Unknown	TOTAL
1980	353	64	71	15	503	5,065	685	Data Not Available		142	6,395
1981	347	67	74	14	502	5,159	677			184	6,522
1982	386	66	90	13	555	5,278	804			178	6,815
1983	371	82	89	16	558	5,409	880			170	7,017
1984	351	89	72	15	527	5,497	832			82	6,938
1985	322	118	72	18	530	5,514	730			69	6,843
1986	277	168	74	15	534	5,969	737			65	7,305
1987	267	155	70	13	505	5,870	719			47	7,141
1988	296	163	78	9	546	6,074	605			60	7,285
1989	308	185	93	13	599	6,323	667			51	7,640
1990	305	190	109	14	618	6,607	717			59	8,001
1991	354	183	122	15	674	6,794	792			68	8,328
1992	386	233	143	18	780	6,758	717			101	8,356
1993	417	223	141	12	793	6,757	727			125	8,402
1994	447	274	127	20	868	6,872	823			139	8,702
1995	467	265	166	20	918	6,919	739			151	8,727
1996	463	302	175	29	969	6,953	918	202	9,042		
1997	458	285	192	29	964	6,867	1,005	85	98	183	9,019
1998	456	304	179	26	965	6,755	886	117	107	224	8,830
1999	470	284	176	24	954	6,578	1,002	112	105	217	8,751
2000	395	325	160	31	911	6,379	1,017	129	84	213	8,520
2001	430	336	158	34	958	6,734	1,167	119	81	200	9,059
2002	405	345	178	17	945	6,874	1,092	130	50	180	9,091
2003	395	338	195	22	950	6,773	1,166	106	36	142	9,031
2004	394	305	184	22	905	6,433	1,205	80	36	116	8,659
2005	369	357	188	23	937	6,311	1,141	n/a	n/a	94	8,483
2006	352	343	222	18	935	6,250	966	44	54	98	8,249
2007	426	344	207	26	1,003	6,363	1,196	28	55	83	8,645
2008	413	326	232	24	995	6,230	1,360	25	100	125	8,710

Notes:

1. Total Minority includes African American, Asian American, Hispanic American, and Native American.
2. Total Unknown includes the categories of Other American and Refused and Uncoded.
3. Data for "Other American" were not available until 1997.
4. Shaded areas represent record-high figures since data were first available in 1980.
5. "n/a" indicated data were not available.

TABLE 11: SHARE OF ENROLLMENT BY ETHNIC GROUP

First Summer Sessions	African American	Asian American	Hispanic American	Native American	Total Minority	White	Non-U.S.	Other American	Refused & Uncoded	Total Unknown	TOTAL		
1980	5.5%	1.0%	1.1%	0.2%	7.9%	79.2%	10.7%	Data Not Available		2.2%	100.00%		
1981	5.3%	1.0%	1.1%	0.2%	7.7%	79.1%	10.4%			2.8%	100.00%		
1982	5.7%	1.0%	1.3%	0.2%	8.1%	77.4%	11.8%			2.6%	100.00%		
1983	5.3%	1.2%	1.3%	0.2%	8.0%	77.1%	12.5%			2.4%	100.00%		
1984	5.1%	1.3%	1.0%	0.2%	7.6%	79.2%	12.0%			1.2%	100.00%		
1985	4.7%	1.7%	1.1%	0.3%	7.7%	80.6%	10.7%			1.0%	100.00%		
1986	3.8%	2.3%	1.0%	0.2%	7.3%	81.7%	10.1%			0.9%	100.00%		
1987	3.7%	2.2%	1.0%	0.2%	7.1%	82.2%	10.1%			0.7%	100.00%		
1988	4.1%	2.2%	1.1%	0.1%	7.5%	83.4%	8.3%			0.8%	100.00%		
1989	4.0%	2.4%	1.2%	0.2%	7.8%	82.8%	8.7%			0.7%	100.00%		
1990	3.8%	2.4%	1.4%	0.2%	7.7%	82.6%	9.0%			0.7%	100.00%		
1991	4.3%	2.2%	1.5%	0.2%	8.1%	81.6%	9.5%			0.8%	100.00%		
1992	4.6%	2.8%	1.7%	0.2%	9.3%	80.9%	8.6%			1.2%	100.00%		
1993	5.0%	2.7%	1.7%	0.1%	9.4%	80.4%	8.7%			1.5%	100.00%		
1994	5.1%	3.1%	1.5%	0.2%	10.0%	79.0%	9.5%			1.6%	100.00%		
1995	5.4%	3.0%	1.9%	0.2%	10.5%	79.3%	8.5%			1.7%	100.00%		
1996	5.1%	3.3%	1.9%	0.3%	10.7%	76.9%	10.2%			2.2%	100.00%		
1997	5.1%	3.2%	2.1%	0.3%	10.7%	76.1%	11.1%			0.9%	1.1%	2.0%	100.00%
1998	5.2%	3.4%	2.0%	0.3%	10.9%	76.5%	10.0%			1.3%	1.2%	2.5%	100.00%
1999	5.4%	3.2%	2.0%	0.3%	10.9%	75.2%	11.5%			1.3%	1.2%	2.5%	100.00%
2000	4.6%	3.8%	1.9%	0.4%	10.7%	74.9%	11.9%	1.5%	1.0%	2.5%	100.00%		
2001	4.7%	3.7%	1.7%	0.4%	10.6%	74.3%	12.9%	1.3%	0.9%	2.2%	100.00%		
2002	4.5%	3.8%	2.0%	0.2%	10.4%	75.6%	12.0%	1.4%	0.5%	2.0%	100.00%		
2003	4.4%	3.7%	2.2%	0.2%	10.5%	75.0%	12.9%	1.2%	0.4%	1.6%	100.00%		
2004	4.6%	3.5%	2.1%	0.3%	10.5%	74.3%	13.9%	0.9%	0.4%	1.3%	100.00%		
2005	4.3%	4.2%	2.2%	0.3%	11.0%	74.4%	13.5%	n/a	n/a	1.1%	100.00%		
2006	4.3%	4.2%	2.7%	0.2%	11.3%	75.8%	11.7%	0.5%	0.6%	1.2%	100.00%		
2007	4.9%	4.0%	2.4%	0.3%	11.6%	73.6%	13.8%	0.3%	0.6%	0.9%	100.00%		
2008	4.7%	3.7%	2.7%	0.3%	11.4%	71.5%	15.6%	0.3%	1.1%	1.4%	100.00%		

Notes:

1. Total Minority includes African American, Asian American, Hispanic American, and Native American.
2. Total Unknown includes the categories of Other American and Refused and Uncoded.
3. Data for "Other American" were not available until 1997.
4. Shaded areas represent record-high figures since data were first available in 1980.
5. "n/a" indicates data were not available.

The following table shows enrollment and share of enrollment by ethnic group, class, and level. There are enrollment increases for Hispanic Americans, Non U.S. and students who refuse or are uncoded this summer.

TABLE 12: COMPARISON OF ENROLLMENT AND SHARE BY ETHNIC GROUP, CLASS AND LEVEL
FIRST SUMMER SESSIONS

Class and Level	AFRICAN AMERICAN					
	ENROLLMENT				SHARE OF CLASS	
	2007	2008	Change Number	Change Percent	Last Year	This Year
Freshman	8	5	- 3	- 37.5%	8.2%	6.0%
Sophomore	50	54	+ 4	+ 8.0%	6.4%	6.4%
Junior	85	99	+ 14	+ 16.5%	4.5%	4.8%
Senior	139	137	- 2	- 1.4%	4.5%	4.3%
Undergraduate Total	282	295	+ 13	+ 4.6%	4.8%	4.8%
Masters	50	33	- 17	- 34.0%	5.7%	4.0%
Doctoral	31	32	+ 1	+ 3.2%	3.7%	3.9%
Graduate Total	81	65	- 16	- 19.8%	4.7%	4.0%
Professional Total	19	27	+ 8	+ 42.1%	5.2%	8.0%
Nondegree Total	44	26	- 18	- 40.9%	6.0%	4.6%
CAMPUS TOTAL	426	413	- 13	- 3.1%	4.9%	4.7%

Class and Level	ASIAN AMERICAN					
	ENROLLMENT				SHARE OF CLASS	
	2007	2008	Change Number	Change Percent	Last Year	This Year
Freshman	10	6	- 4	- 40.0%	10.2%	7.2%
Sophomore	50	61	+ 11	+ 22.0%	6.4%	7.3%
Junior	94	93	- 1	- 1.1%	5.0%	4.5%
Senior	127	118	- 9	- 7.1%	4.2%	3.7%
Undergraduate Total	281	278	- 3	- 1.1%	4.8%	4.5%
Masters	17	11	- 6	- 35.3%	1.9%	1.3%
Doctoral	21	13	- 8	- 38.1%	2.5%	1.6%
Graduate Total	38	24	- 14	- 36.8%	2.2%	1.5%
Professional Total	11	17	+ 6	+ 54.5%	3.0%	5.0%
Nondegree Total	14	7	- 7	- 50.0%	1.9%	1.2%
CAMPUS TOTAL	344	326	- 18	- 5.2%	4.0%	3.7%

Class and Level	HISPANIC AMERICAN					
	ENROLLMENT				SHARE OF CLASS	
	2007	2008	Change Number	Change Percent	Last Year	This Year
Freshman	3	1	- 2	- 66.7%	3.1%	1.2%
Sophomore	24	20	- 4	- 16.7%	3.1%	2.4%
Junior	35	48	+ 13	+ 37.1%	1.9%	2.3%
Senior	79	84	+ 5	+ 6.3%	2.6%	2.6%
Undergraduate Total	141	153	+ 12	+ 8.5%	2.4%	2.5%
Masters	17	25	+ 8	+ 47.1%	1.9%	3.1%
Doctoral	28	31	+ 3	+ 10.7%	3.4%	3.8%
Graduate Total	45	56	+ 11	+ 24.4%	2.6%	3.4%
Professional Total	9	11	+ 2	+ 22.2%	2.5%	3.3%
Nondegree Total	12	12	0	0.0%	1.6%	2.1%
CAMPUS TOTAL	207	232	+ 25	+ 12.1%	2.4%	2.7%

Class and Level	NATIVE AMERICAN					
	ENROLLMENT				SHARE OF CLASS	
	2007	2008	Change Number	Change Percent	Last Year	This Year
Freshman	0	0	0	---	0.0%	0.0%
Sophomore	2	7	+ 5	+ 250.0%	0.3%	0.8%
Junior	6	5	- 1	- 16.7%	0.3%	0.2%
Senior	4	8	+ 4	+ 100.0%	0.1%	0.3%
Undergraduate Total	12	20	+ 8	+ 66.7%	0.2%	0.3%
Masters	4	0	- 4	- 100.0%	0.5%	0.0%
Doctoral	10	4	- 6	- 60.0%	1.2%	0.5%
Graduate Total	14	4	- 10	- 71.4%	0.8%	0.2%
Professional Total	0	0	0	---	0.0%	0.0%
Nondegree Total	0	0	0	---	0.0%	0.0%
CAMPUS TOTAL	26	24	- 2	- 7.7%	0.3%	0.3%

Class and Level	U.S. MINORITY					
	ENROLLMENT				SHARE OF CLASS	
	2007	2008	Change Number	Change Percent	Last Year	This Year
Freshman	21	12	- 9	- 42.9%	21.4%	14.5%
Sophomore	126	142	+ 16	+ 12.7%	16.1%	16.9%
Junior	220	245	+ 25	+ 11.4%	11.7%	11.8%
Senior	349	347	- 2	- 0.6%	11.4%	10.9%
Undergraduate Total	716	746	+ 30	+ 4.2%	12.3%	12.1%
Masters	88	69	- 19	- 21.6%	10.0%	8.5%
Doctoral	90	80	- 10	- 11.1%	10.8%	9.8%
Graduate Total	178	149	- 29	- 16.3%	10.4%	9.1%
Professional Total	39	55	+ 16	+ 41.0%	10.6%	16.3%
Nondegree Total	70	45	- 25	- 35.7%	9.5%	8.0%
CAMPUS TOTAL	1,003	995	- 8	- 0.8%	11.6%	11.4%

**TABLE 12: COMPARISON OF ENROLLMENT AND SHARE BY ETHNIC GROUP, CLASS AND LEVEL
FIRST SUMMER SESSIONS**

Class and Level	WHITE AMERICAN					
	ENROLLMENT				SHARE OF CLASS	
	2007	2008	Change Number	Change Percent	Last Year	This Year
Freshman	44	27	- 17	- 38.6%	44.9%	32.5%
Sophomore	504	535	+ 31	+ 6.2%	64.5%	63.7%
Junior	1,512	1,588	+ 76	+ 5.0%	80.1%	76.6%
Senior	2,408	2,475	+ 67	+ 2.8%	78.7%	77.8%
Undergraduate Total	4,468	4,625	+ 157	+ 3.5%	76.7%	74.9%
Masters	603	527	- 76	- 12.6%	68.7%	64.6%
Doctoral	514	470	- 44	- 8.6%	61.6%	57.6%
Graduate Total	1,117	997	- 120	- 10.7%	65.2%	61.1%
Professional Total	315	270	- 45	- 14.3%	85.8%	80.1%
Nondegree Total	463	338	- 125	- 27.0%	62.7%	60.1%
CAMPUS TOTAL	6,363	6,230	- 133	- 2.1%	73.6%	71.5%

Class and Level	OTHER AMERICAN					
	ENROLLMENT				SHARE OF CLASS	
	2007	2008	Change Number	Change Percent	Last Year	This Year
Freshman	1	3	+ 2	+ 200.0%	1.0%	3.6%
Sophomore	2	5	+ 3	+ 150.0%	0.3%	0.6%
Junior	8	6	- 2	- 25.0%	0.4%	0.3%
Senior	11	8	- 3	- 27.3%	0.4%	0.3%
Undergraduate Total	22	22	0	0.0%	0.4%	0.4%
Masters	0	0	0	---	0.0%	0.0%
Doctoral	0	0	0	---	0.0%	0.0%
Graduate Total	0	0	0	---	0.0%	0.0%
Professional Total	1	3	+ 2	+ 200.0%	0.3%	0.9%
Nondegree Total	5	0	- 5	- 100.0%	0.7%	0.0%
CAMPUS TOTAL	28	25	- 3	- 10.7%	0.3%	0.3%

Class and Level	NON. U.S.					
	ENROLLMENT				SHARE OF CLASS	
	2007	2008	Change Number	Change Percent	Last Year	This Year
Freshman	29	39	+ 10	+ 34.5%	29.6%	47.0%
Sophomore	140	141	+ 1	+ 0.7%	17.9%	16.8%
Junior	133	211	+ 78	+ 58.6%	7.0%	10.2%
Senior	280	321	+ 41	+ 14.6%	9.2%	10.1%
Undergraduate Total	582	712	+ 130	+ 22.3%	10.0%	11.5%
Masters	181	215	+ 34	+ 18.8%	20.6%	26.3%
Doctoral	230	264	+ 34	+ 14.8%	27.5%	32.4%
Graduate Total	411	479	+ 68	+ 16.5%	24.0%	29.4%
Professional Total	9	6	- 3	- 33.3%	2.5%	1.8%
Nondegree Total	194	163	- 31	- 16.0%	26.3%	29.0%
CAMPUS TOTAL	1,196	1,360	+ 164	+ 13.7%	13.8%	15.6%

Class and Level	REFUSED and UNCODED					
	ENROLLMENT				SHARE OF CLASS	
	2007	2008	Change Number	Change Percent	Last Year	This Year
Freshman	3	2	- 1	- 33.3%	3.1%	2.4%
Sophomore	9	17	+ 8	+ 88.9%	1.2%	2.0%
Junior	15	24	+ 9	+ 60.0%	0.8%	1.2%
Senior	12	31	+ 19	+ 158.3%	0.4%	1.0%
Undergraduate Total	39	74	+ 35	+ 89.7%	0.7%	1.2%
Masters	6	5	- 1	- 16.7%	0.7%	0.6%
Doctoral	1	2	+ 1	+ 100.0%	0.1%	0.2%
Graduate Total	7	7	0	0.0%	0.4%	0.4%
Professional Total	3	3	0	0.0%	0.8%	0.9%
Nondegree Total	6	16	+ 10	+ 166.7%	0.8%	2.8%
CAMPUS TOTAL	55	100	+ 45	+ 81.8%	0.6%	1.1%

Class and Level	TOTAL ENROLLMENT					
	ENROLLMENT				SHARE OF CLASS	
	2007	2008	Change Number	Change Percent	Last Year	This Year
Freshman	98	83	- 15	- 15.3%	100.0%	100.0%
Sophomore	781	840	+ 59	+ 7.6%	100.0%	100.0%
Junior	1,888	2,074	+ 186	+ 9.9%	100.0%	100.0%
Senior	3,060	3,182	+ 122	+ 4.0%	100.0%	100.0%
Undergraduate Total	5,827	6,179	+ 352	+ 6.0%	100.0%	100.0%
Masters	878	816	- 62	- 7.1%	100.0%	100.0%
Doctoral	835	816	- 19	- 2.3%	100.0%	100.0%
Graduate Total	1,713	1,632	- 81	- 4.7%	100.0%	100.0%
Professional Total	367	337	- 30	- 8.2%	100.0%	100.0%
Nondegree Total	738	562	- 176	- 23.8%	100.0%	100.0%
CAMPUS TOTAL	8,645	8,710	+ 65	+ 0.8%	100.0%	100.0%

RESIDENCE CLASSIFICATION

Tables 13 and 14 show the numbers of students enrolled by student level and residency and the shares of student enrollment by level and residency, respectively. Both the number and share of nonresident students enrolled First Summer Session 2008 (3,851 students; 44.2%) are new record-high figures (since 1986), and nonresident students experienced the biggest change since data were first available, both in terms of number (+315 students) and percent change from the previous year (+8.9%). This increase is primarily due to the record-high number of nonresident students at the undergraduate level (2,327), which also represents the biggest change at that level since data were first available, both in terms of number (+373 students) and percent change from the previous year (+19.1%). Table 14 also shows record high shares for nonresident students at the undergraduate (37.7%) and professional (57.9%) levels.

Within the undergraduate level, the number of nonresident sophomores (371), juniors (830) and seniors (1,072) are all at record-high figures, while the number of resident freshmen (29) and seniors (2,110) show all-time record-low figures. Resident enrollment is down this year overall, as well as at every level and undergraduate class, except sophomores.

TABLE 13: ENROLLMENT BY RESIDENCE CLASSIFICATION AND STUDENT LEVEL

First Summer Sessions	Undergraduate		Graduate		Professional		Nondegree		Total	
	Resident	Nonresident	Resident	Nonresident	Resident	Nonresident	Resident	Nonresident	Resident	Nonresident
1986	3,502	1,381	752	1,003	89	51	303	224	4,646	2,659
1987	3,525	1,276	724	993	106	60	315	142	4,670	2,471
1988	3,671	1,312	679	1,013	103	49	353	104	4,806	2,478
1989	3,862	1,395	651	1,004	76	48	388	216	4,977	2,663
1990	4,160	1,412	617	1,050	66	54	385	257	5,228	2,773
1991	4,375	1,422	629	1,049	66	62	402	323	5,472	2,856
1992	4,413	1,364	562	1,077	139	104	403	294	5,517	2,839
1993	4,475	1,336	574	1,085	144	95	377	316	5,570	2,832
1994	4,602	1,312	608	1,112	194	120	353	401	5,757	2,945
1995	4,587	1,389	603	1,071	207	127	397	346	5,794	2,933
1996	4,741	1,328	540	1,304	189	133	378	429	5,848	3,194
1997	4,694	1,396	523	1,265	207	136	347	451	5,771	3,248
1998	4,719	1,416	544	1,195	218	143	309	286	5,790	3,040
1999	4,594	1,514	556	1,204	179	149	263	292	5,592	3,159
2000	4,366	1,682	495	1,099	178	149	304	247	5,343	3,177
2001	4,646	1,765	485	1,152	213	182	335	281	5,679	3,380
2002	4,832	1,873	508	1,103	173	138	285	179	5,798	3,293
2003	4,529	2,033	555	1,083	167	148	346	170	5,597	3,434
2004	4,170	2,021	542	1,109	146	146	361	164	5,219	3,440
2005	4,072	1,929	571	1,126	173	185	287	140	5,103	3,380
2006	3,877	1,895	607	1,121	167	207	312	63	4,963	3,286
2007	3,873	1,954	570	1,143	173	194	493	245	5,109	3,536
2008	3,852	2,327	507	1,125	142	195	358	204	4,859	3,851
Change from Last Year	- 21 - 0.5%	+ 373 + 19.1%	- 63 - 11.1%	- 18 - 1.6%	- 31 - 17.9%	+ 1 + 0.5%	- 135 - 27.4%	- 41 - 16.7%	- 250 - 4.9%	+ 315 + 8.9%

Notes:

1. Total includes unclassified students.
2. Shaded areas indicate record high figures since 1986.

TABLE 14: SHARE OF ENROLLMENT BY RESIDENCE CLASSIFICATION AND STUDENT LEVEL

First Summer Sessions	Undergraduate		Graduate		Professional		Nondegree		Total	
	Resident	Nonresident	Resident	Nonresident	Resident	Nonresident	Resident	Nonresident	Resident	Nonresident
1986	71.7%	28.3%	42.8%	57.2%	63.6%	36.4%	57.5%	42.5%	63.6%	36.4%
1987	73.4%	26.6%	42.2%	57.8%	63.9%	36.1%	68.9%	31.1%	65.4%	34.6%
1988	73.7%	26.3%	40.1%	59.9%	67.8%	32.2%	77.2%	22.8%	66.0%	34.0%
1989	73.5%	26.5%	39.3%	60.7%	61.3%	38.7%	64.2%	35.8%	65.1%	34.9%
1990	74.7%	25.3%	37.0%	63.0%	55.0%	45.0%	60.0%	40.0%	65.3%	34.7%
1991	75.5%	24.5%	37.5%	62.5%	51.6%	48.4%	55.4%	44.6%	65.7%	34.3%
1992	76.4%	23.6%	34.3%	65.7%	57.2%	42.8%	57.8%	42.2%	66.0%	34.0%
1993	77.0%	23.0%	34.6%	65.4%	60.3%	39.7%	54.4%	45.6%	66.3%	33.7%
1994	77.8%	22.2%	35.3%	64.7%	61.8%	38.2%	46.8%	53.2%	66.2%	33.8%
1995	76.8%	23.2%	36.0%	64.0%	62.0%	38.0%	53.4%	46.6%	66.4%	33.6%
1996	78.1%	21.9%	29.3%	70.7%	58.7%	41.3%	46.8%	53.2%	64.7%	35.3%
1997	77.1%	22.9%	29.3%	70.7%	60.3%	39.7%	43.5%	56.5%	64.0%	36.0%
1998	76.9%	23.1%	31.3%	68.7%	60.4%	39.6%	51.9%	48.1%	65.6%	34.4%
1999	75.2%	24.8%	31.6%	68.4%	54.6%	45.4%	47.4%	52.6%	63.9%	36.1%
2000	72.2%	27.8%	31.1%	68.9%	54.4%	45.6%	55.2%	44.8%	62.7%	37.3%
2001	72.5%	27.5%	29.6%	70.4%	53.9%	46.1%	54.4%	45.6%	62.7%	37.3%
2002	72.1%	27.9%	31.5%	68.5%	55.6%	44.4%	61.4%	38.6%	63.8%	36.2%
2003	69.0%	31.0%	33.9%	66.1%	53.0%	47.0%	67.1%	32.9%	62.0%	38.0%
2004	67.4%	32.6%	32.8%	67.2%	50.0%	50.0%	68.8%	31.2%	60.3%	39.7%
2005	67.9%	32.1%	33.6%	66.4%	48.3%	51.7%	67.2%	32.8%	60.2%	39.8%
2006	67.2%	32.8%	35.1%	64.9%	44.7%	55.3%	83.2%	16.8%	60.2%	39.8%
2007	66.5%	33.5%	33.3%	66.7%	47.1%	52.9%	66.8%	33.2%	59.1%	40.9%
2008	62.3%	37.7%	31.1%	68.9%	42.1%	57.9%	63.7%	36.3%	55.8%	44.2%

Note: Shaded areas indicate record high figures since 1986.

HEADCOUNT BY STUDENT SCHOOL

For First Summer Session 2008, nine schools show increases in enrollment from last year while eight show decreases. The following table shows enrollment by student school and student level for first summer session this year and last year. Social Work, SPEA, Business, and Informatics show the greatest percentage gains in enrollment from last year. Education shows a 23.5% drop in enrollment from last year. Enrollment in Education for summer sessions tends to fluctuate quite a bit as much of their student body is comprised of teachers attending licensing workshops.

TABLE 15: ENROLLMENT BY STUDENT LEVEL WITHIN STUDENT SCHOOL

Student School	First Summer Sessions		Change from last year	
	2007	2008	Number	Percent
Arts and Sciences				
Undergraduate	2,203	2,345	+ 142	+ 6.4%
Graduate	28	31	+ 3	+ 10.7%
Nondegree	262	225	- 37	- 14.1%
Total	2,493	2,601	+ 108	+ 4.3%
Business				
Undergraduate	1,074	1,197	+ 123	+ 11.5%
Graduate	76	121	+ 45	+ 59.2%
Nondegree	0	0	0	-----
Total	1,150	1,318	+ 168	+ 14.6%
Continuing Studies				
Undergraduate	236	227	- 9	- 3.8%
Nondegree	82	88	+ 6	+ 7.3%
Total	318	315	- 3	- 0.9%
Education				
Undergraduate	311	279	- 32	- 10.3%
Graduate	283	231	- 52	- 18.4%
Nondegree	349	211	- 138	- 39.5%
Total	943	721	- 222	- 23.5%
Graduate School				
Graduate	1,031	944	- 87	- 8.4%
Nondegree	21	18	- 3	- 14.3%
Total	1,052	962	- 90	- 8.6%
HPER				
Undergraduate	602	643	+ 41	+ 6.8%
Graduate	86	89	+ 3	+ 3.5%
Nondegree	7	8	+ 1	+ 14.3%
Total	695	740	+ 45	+ 6.5%
Informatics				
Undergraduate	87	98	+ 11	+ 12.6%
Graduate	24	27	+ 3	+ 12.5%
Nondegree	1	1	0	0.0%
Total	112	126	+ 14	+ 12.5%

TABLE 15: ENROLLMENT BY STUDENT LEVEL WITHIN STUDENT SCHOOL (CONTINUED)

Student School	First Summer Sessions		Change from 2007 to 2008	
	2007	2008	Number	Percent
Journalism				
Undergraduate	185	179	- 6	- 3.2%
Nondegree	1	0	- 1	- 100.0%
Total	186	179	- 7	- 3.8%
Labor Studies				
Undergraduate	0	1	+ 1	-----
Total	0	1	+ 1	-----
Law				
Graduate	4	1	- 3	- 75.0%
Professional	161	155	- 6	- 3.7%
Nondegree	0	0	0	-----
Total	165	156	- 9	- 5.5%
Library & Info Science				
Graduate	143	138	- 5	- 3.5%
Nondegree	7	10	+ 3	+ 42.9%
Total	150	148	- 2	- 1.3%
Music				
Undergraduate	94	102	+ 8	+ 8.5%
Graduate	8	12	+ 4	+ 50.0%
Nondegree	1	0	- 1	- 100.0%
Total	103	114	+ 11	+ 10.7%
Nursing				
Undergraduate	27	20	- 7	- 25.9%
Total	27	20	- 7	- 25.9%
Optometry				
Undergraduate	1	0	- 1	- 100.0%
Professional	206	182	- 24	- 11.7%
Nondegree	0	0	0	-----
Total	207	182	- 25	- 12.1%
SPEA				
Undergraduate	262	305	+ 43	+ 16.4%
Graduate	30	38	+ 8	+ 26.7%
Total	292	343	+ 51	+ 17.5%
Social Work				
Undergraduate	8	13	+ 5	+ 62.5%
Total	8	13	+ 5	+ 62.5%
University Division				
Undergraduate	737	770	+ 33	+ 4.5%
Nondegree	7	1	- 6	- 85.7%
Total	744	771	+ 27	+ 3.6%

CREDIT HOUR LOAD (SCHOOL)

The following table shows credit hour load by student school for First Summer Sessions 2007 and 2008. The credit hour load for freshmen and undergraduates are also represented on this table. All schools show an increase in credit hour load, except for Business, Graduate School, HPER, SLIS, Music, SPEA and Social Work. The credit hour load for Optometry students is more than one credit hour higher than last year.

In summers, a full-time undergraduate, professional, or nondegree student must be enrolled in six hours, and a full-time graduate student must be enrolled in four hours. This year, the undergraduate average credit hour loads in Business and HPER are greater than six hours. The total credit hour load for Optometry (nearly all Optometry students are professional students) is also greater than six hours.

TABLE 16: AVERAGE CREDIT HOUR LOAD BY STUDENT SCHOOL

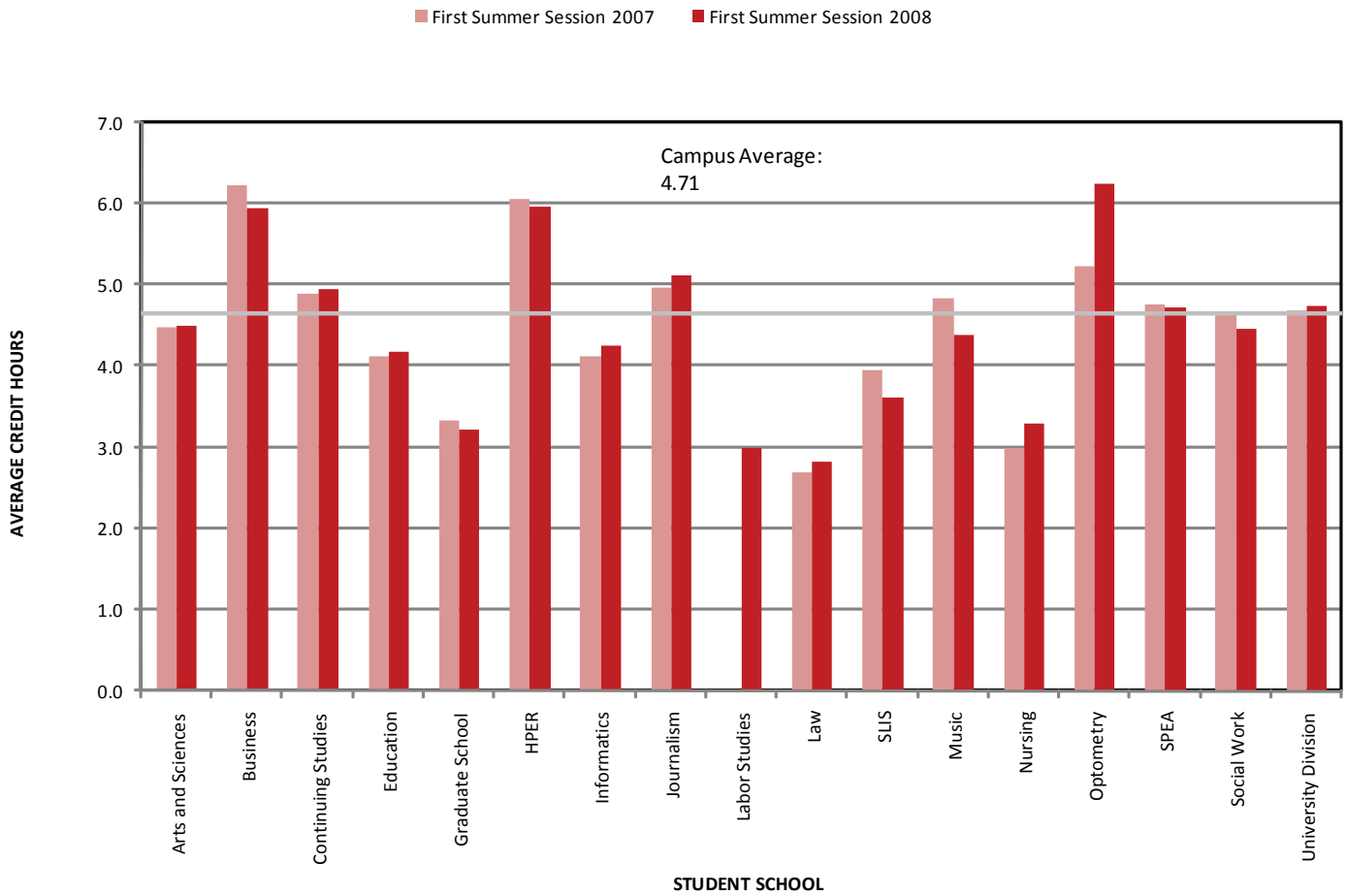
Student School	Freshmen		Undergraduate		Total	
	First Summer Sessions		First Summer Sessions		First Summer Sessions	
	2007	2008	2007	2008	2007	2008
Arts and Sciences	n/a	n/a	4.83	4.76	4.48	4.49
Business	3.00	3.50	6.65	6.50	6.23	5.94
Continuing Studies	4.13	3.00	5.20	5.37	4.89	4.94
Education	n/a	n/a	4.99	4.94	4.12	4.18
Graduate School	n/a	n/a	n/a	n/a	3.34	3.21
HPER	4.50	n/a	6.35	6.20	6.06	5.96
Informatics	n/a	n/a	4.77	5.07	4.13	4.26
Journalism	n/a	n/a	4.98	5.11	4.96	5.11
Labor Studies	n/a	n/a	n/a	3.00	n/a	3.00
Law	n/a	n/a	n/a	n/a	2.70	2.83
SLIS	n/a	n/a	n/a	n/a	3.96	3.62
Music	n/a	n/a	4.87	4.56	4.83	4.38
Nursing	n/a	n/a	3.00	3.30	3.00	3.30
Optometry	n/a	n/a	9.00	n/a	5.24	6.25
SPEA	n/a	n/a	4.92	4.90	4.77	4.73
Social Work	n/a	n/a	4.63	4.46	4.63	4.46
University Division	4.31	4.38	4.69	4.75	4.69	4.75
TOTAL	4.24	4.25	5.33	5.29	4.68	4.71

Notes:

1. All Students includes undergraduate, graduate, professional, and nondegree students.
2. "n/a" indicates no credit hour load.
3. Students enrolled in dual careers (i.e., MBA/JD students) are counted under each school. Thus, there will be two credit hour loads calculated for a dually enrolled student based on a.) the number of credit hours the student is taking as a Business student and b.) the number of credit hours taken as a Law student, for example.

The following chart illustrates the total credit hour load by student school for First Summer Sessions 2007 and 2008. The grey line represents the average credit hour load (4.71) across schools for First Summer 2008.

FIGURE 5: AVERAGE CREDIT HOUR LOAD BY STUDENT SCHOOL



CREDIT HOURS AND COURSE ENROLLMENTS

COURSE LEVEL

The number of credit hours for First Summer Session 2008 shows an increase this year, the third increase in a row. The record high for credit hours was set in 2002. The increase in credit hours this year is due to higher enrollments at the undergraduate level. However, the increase in credit hours (+1.4%) is slightly more than the increase in headcount (+0.8%). Within the undergraduate level, credit hours show decreases at the 100- and 400-levels while there are relatively large increases at the 200- and 300-levels.

The following table shows historical credit hour by course level information, beginning with First Summer Session 1976.

TABLE 17: CREDIT HOURS BY COURSE LEVEL

First Summer Sessions	100-level	200-level	300-level	400-level	Total Undergraduate	Graduate	Total
1976	5,778.0	3,430.0	6,447.0	3,610.1	19,265.1	7,259.1	26,524.2
1977	n/a	n/a	n/a	n/a	n/a	n/a	n/a
1978	5,980.0	3,249.0	8,235.0	3,799.0	21,263.0	6,945.4	28,208.4
1979	5,754.0	4,415.0	8,621.0	3,196.0	21,986.0	6,705.0	28,691.0
1980	6,079.0	4,406.0	8,496.0	3,629.0	22,610.0	7,343.1	29,953.1
1981	6,773.0	4,627.0	8,282.0	4,314.0	23,996.0	7,102.0	31,098.0
1982	7,724.0	4,824.0	7,535.0	4,573.0	24,656.0	6,899.0	31,555.0
1983	7,995.0	5,559.0	8,280.0	4,133.0	25,967.0	7,020.0	32,987.0
1984	6,736.0	5,755.0	8,084.0	4,537.0	25,112.0	7,541.0	32,653.0
1985	6,693.0	5,981.0	8,521.0	3,996.0	25,191.0	6,472.5	31,663.5
1986	6,786.0	5,498.0	10,561.0	4,666.0	27,511.0	7,260.0	34,771.0
1987	6,668.0	5,681.0	9,501.0	5,042.0	26,892.0	6,838.5	33,730.5
1988	6,958.0	6,514.0	9,684.5	4,211.0	27,367.5	6,869.0	34,236.5
1989	7,312.0	7,009.0	10,189.5	4,629.0	29,139.5	6,745.0	35,884.5
1990	7,473.0	7,468.0	10,673.0	5,137.0	30,751.0	6,803.0	37,554.0
1991	6,430.0	7,623.0	12,245.0	4,744.0	31,042.0	7,079.0	38,121.0
1992	6,507.0	7,440.0	12,105.0	5,330.0	31,382.0	6,971.0	38,353.0
1993	6,860.0	7,266.0	11,163.0	5,203.0	30,492.0	7,041.0	37,533.0
1994	7,139.0	7,119.0	11,769.5	5,622.0	31,649.5	7,433.0	39,082.5
1995	7,432.0	7,921.0	11,611.0	5,174.0	32,138.0	7,524.0	39,662.0
1996	8,216.0	7,334.0	12,206.5	4,985.5	32,742.0	7,533.0	40,275.0
1997	7,610.0	8,122.0	12,046.5	5,076.0	32,854.5	7,464.5	40,319.0
1998	7,480.5	8,111.0	12,047.5	5,290.0	32,929.0	7,618.0	40,547.0
1999	7,868.0	7,498.0	12,181.5	5,663.0	33,210.5	7,394.0	40,604.5
2000	7,696.0	7,423.0	12,535.5	4,712.5	32,367.0	7,110.5	39,477.5
2001	8,255.0	8,727.0	13,057.5	4,617.0	34,656.5	7,377.5	42,034.0
2002	8,580.0	8,645.0	13,858.5	4,799.5	35,883.0	7,133.5	43,016.5
2003	8,283.0	8,756.0	13,371.0	4,718.0	35,128.0	7,124.0	42,252.0
2004	7,824.0	8,198.5	12,894.0	4,279.0	33,195.5	7,525.5	40,721.0
2005	n/a	n/a	n/a	n/a	n/a	n/a	38,992.5
2006	7,014.0	7,753.0	13,934.5	3,815.5	32,517.0	7,856.5	40,373.5
2007	6,804.0	7,516.0	13,666.5	4,563.5	32,550.0	7,949.5	40,499.5
2008	6,661.0	8,026.0	14,644.5	4,449.0	33,780.5	7,269.0	41,049.5
Change from last year	- 143.0 - 2.1%	+ 510.0 + 6.8%	+ 978.0 + 7.2%	- 114.5 - 2.5%	+ 1,230.5 + 3.8%	- 680.5 - 8.6%	+ 550.0 + 1.4%

Note: Shaded areas indicate record highs since data were first available in 1976.

The following table shows historical course enrollments as well as the change from last year. The overall increase in course enrollments is comparable to the increase in credit hours (+1.4% increase in credit hours, +1.7% increase in course enrollments). Graduate course enrollments (-7.3%) and credit hours (-8.6%) both show decreases this year. Course enrollments at the undergraduate level increase 4.1% this year and undergraduate credit hours increase 3.8%. Within the undergraduate level, course enrollments show increases at all levels except the 100-level.

TABLE 18: COURSE ENROLLMENTS BY COURSE LEVEL

First Summer Sessions	100-level	200-level	300-level	400-level	Total Undergraduate	Graduate	Total
1976	2,434	1,112	2,376	1,201	7,123	3,580	10,703
1977	n/a	n/a	n/a	n/a	n/a	n/a	n/a
1978	2,246	1,081	2,696	1,321	7,344	2,475	9,819
1979	2,164	1,510	2,763	1,115	7,552	2,275	9,827
1980	2,355	1,484	2,849	1,248	7,936	2,541	10,477
1981	2,652	1,594	2,765	1,364	8,375	2,413	10,788
1982	2,961	1,611	2,421	1,447	8,440	2,329	10,769
1983	2,949	1,804	2,742	1,398	8,893	2,362	11,255
1984	2,454	1,863	2,799	1,400	8,516	2,505	11,021
1985	2,416	1,971	2,969	1,300	8,656	2,218	10,874
1986	2,495	1,806	3,725	1,448	9,474	2,422	11,896
1987	2,475	1,901	3,331	1,568	9,275	2,287	11,562
1988	2,568	2,197	3,474	1,329	9,568	2,248	11,816
1989	2,732	2,359	3,661	1,429	10,181	2,162	12,343
1990	2,823	2,495	3,793	1,621	10,732	2,186	12,918
1991	2,491	2,566	4,401	1,529	10,987	2,313	13,300
1992	2,520	2,505	4,208	1,657	10,890	2,322	13,212
1993	2,661	2,454	4,144	1,638	10,897	2,284	13,181
1994	2,882	2,395	4,450	1,673	11,400	2,425	13,825
1995	2,914	2,620	4,429	1,537	11,500	2,445	13,945
1996	3,266	2,411	4,648	1,559	11,884	2,539	14,423
1997	3,084	2,691	4,791	1,631	12,197	2,589	14,786
1998	2,868	2,672	4,780	1,635	11,955	2,668	14,623
1999	3,026	2,502	4,826	1,767	12,121	2,577	14,698
2000	2,900	2,448	4,841	1,412	11,601	2,512	14,113
2001	3,162	2,875	5,232	1,369	12,638	2,684	15,322
2002	3,178	2,830	5,465	1,436	12,909	2,403	15,312
2003	3,078	2,879	5,227	1,430	12,614	2,459	15,073
2004	2,899	2,726	5,056	1,336	12,017	2,555	14,572
2005	n/a	n/a	n/a	n/a	n/a	n/a	n/a
2006	2,459	2,552	4,624	1,185	10,820	2,703	13,523
2007	2,574	2,462	4,310	1,421	10,767	2,815	13,582
2008	2,537	2,613	4,608	1,450	11,208	2,609	13,817
Change from last year	- 37 - 1.4%	+ 151 + 6.1%	+ 298 + 6.9%	+ 29 + 2.0%	+ 441 + 4.1%	- 206 - 7.3%	+ 235 + 1.7%

Note: Shaded areas indicate record highs since data were first available in 1976.

STUDENT LEVEL

Credit hours taken by undergraduate and professional students show increases from last year. The larger increase in number of credit hours occurs at the undergraduate level (+1646 credit hours), however the smaller increase in number of credit hours at the professional level (+81.5 credit hours) represents a greater percentage increase from last year to this year (5.5% compared to 5.3% at the undergraduate level.) Within the undergraduate level, credit hours taken by sophomores, juniors, and seniors show an increase this year.

The following table shows credit hours by student level and residency for this year and last year. For First Summer Session, the number of credit hours taken by nonresident students show an increase, now accounting for 42.0% of all the credit hours enrolled. The number of credit hours taken by nonresident students show an increase at both the undergraduate and professional levels, and a decrease at the graduate and nondegree levels.

TABLE 19: CREDIT HOURS BY STUDENT LEVEL AND RESIDENCE CLASSIFICATION
FIRST SUMMER SESSIONS

Student Level	Residents		Change	Nonresidents		Change	Total		Change
	2007	2008		2007	2008		2007	2008	
Undergraduate	20,086.5	19,917.5	-169.0	10,958.0	12,773.0	+ 1815.0	31,044.5	32,690.5	+ 1646.0
Percent of Level	64.7%	60.9%	- 0.8%	35.3%	39.1%	+ 16.6%			+ 5.3%
Graduate	2,153.0	1,886.5	- 266.5	3,756.5	3,379.5	- 377.0	5,909.5	5,266.0	- 643.5
Percent of Level	36.4%	35.8%	- 12.4%	63.6%	64.2%	- 10.0%			- 10.9%
Professional	761.0	708.5	- 52.5	733.5	867.5	+ 134.0	1,494.5	1,576.0	+ 81.5
Percent of Level	50.9%	45.0%	- 6.9%	49.1%	55.0%	+ 18.3%			+ 5.5%
Nondegree	1,774.0	1,281.0	- 493.0	277.0	236.0	- 41.0	2,051.0	1,517.0	- 534.0
Percent of Level	86.5%	84.4%	- 27.8%	13.5%	15.6%	- 14.8%			- 26.0%
TOTAL	24,774.5	23,793.5	-981.0	15,725.0	17,256.0	+ 1531.0	40,499.5	41,049.5	+ 550.0
Percent of Level	61.2%	58.0%	- 4.0%	38.8%	42.0%	+ 9.7%			+ 1.4%

COURSE SCHOOL

The table on the following page shows credit hours by course school and level. Credit hours show increases in Arts and Sciences, Business, HPER, Informatics, Journalism, Labor Studies, Law, Nursing, Optometry, and SPEA.

Credit hours in Journalism show an increase of 36.3% from last year. There are also substantial enrollment increases in SPEA (34.9%) and Informatics (31.9%).

Credit hours in Education show a decrease of 28.7%. Last year there were additional enrollments in Education, due in part to the Munger Conference. Credit hours at the graduate level in Education are down 30.7%.

TABLE 20: CREDIT HOURS BY COURSE SCHOOL AND COURSE LEVEL

School	First Summer Sessions		Change	Percent Change
	2007	2008		
Arts and Sciences				
Undergraduate	18,802.5	18,876.0	+ 73.5	+ 0.4%
Graduate	1,777.5	1,862.0	+ 84.5	+ 4.8%
Total	20,580.0	20,738.0	+ 158.0	+ 0.8%
Business				
Undergraduate	7,001.0	7,637.5	+ 636.5	+ 9.1%
Graduate	77.0	146.5	+ 69.5	+ 90.3%
Total	7,078.0	7,784.0	+ 706.0	+ 10.0%
Education				
Undergraduate	867.5	679.0	- 188.5	- 21.7%
Graduate	2,948.0	2,043.0	- 905.0	- 30.7%
Total	3,815.5	2,722.0	- 1,093.5	- 28.7%
Graduate School				
Graduate	62.0	20.0	- 42.0	- 67.7%
Total	62.0	20.0	- 42.0	- 67.7%
HPER				
Undergraduate	3,711.0	3,831.0	+ 120.0	+ 3.2%
Graduate	517.0	582.0	+ 65.0	+ 12.6%
Total	4,228.0	4,413.0	+ 185.0	+ 4.4%
Informatics				
Undergraduate	397.0	583.0	+ 186.0	+ 46.9%
Graduate	101.0	74.0	- 27.0	- 26.7%
Total	498.0	657.0	+ 159.0	+ 31.9%
Journalism				
Undergraduate	447.0	574.0	+ 127.0	+ 28.4%
Graduate	62.0	120.0	+ 58.0	+ 93.5%
Total	509.0	694.0	+ 185.0	+ 36.3%
Labor Studies				
Undergraduate	135.0	170.0	+ 35.0	+ 25.9%
Total	135.0	170.0	+ 35.0	+ 25.9%
Law				
Graduate	440.0	451.0	+ 11.0	+ 2.5%
Total	440.0	451.0	+ 11.0	+ 2.5%
Library & Info Science				
Undergraduate	0.0	0.0	0.0	-----
Graduate	653.5	589.5	- 64.0	- 9.8%
Total	653.5	589.5	- 64.0	- 9.8%
Medical Sciences				
Undergraduate	7.0	3.0	- 4.0	- 57.1%
Graduate	20.0	4.0	- 16.0	- 80.0%
Total	27.0	7.0	- 20.0	- 74.1%

Note: Undergraduate course level is defined as 0-499 level courses while Graduate is defined as 500+.

TABLE 20: CREDIT HOURS BY COURSE SCHOOL AND COURSE LEVEL (CONTINUED)

School	First Summer Sessions		Change	Percent Change
	2007	2008		
Music				
Undergraduate	309.0	305.0	- 4.0	- 1.3%
Graduate	33.0	12.0	- 21.0	- 63.6%
Total	342.0	317.0	- 25.0	- 7.3%
Nursing				
Undergraduate	81.0	82.0	+ 1.0	+ 1.2%
Total	81.0	82.0	+ 1.0	+ 1.2%
Optometry				
Undergraduate	11.0	4.0	- 7.0	- 63.6%
Graduate	1,127.5	1,174.0	+ 46.5	+ 4.1%
Total	1,138.5	1,178.0	+ 39.5	+ 3.5%
SPEA				
Undergraduate	772.0	1,027.0	+ 255.0	+ 33.0%
Graduate	131.0	191.0	+ 60.0	+ 45.8%
Total	903.0	1,218.0	+ 315.0	+ 34.9%
Social Work				
Undergraduate	9.0	9.0	,0.0	0.0%
Total	9.0	9.0	,0.0	0.0%
Total				
Undergraduate	32,550.0	33,780.5	+ 1,230.5	+ 3.8%
Graduate	7,949.5	7,269.0	- 680.5	- 8.6%
GRAND TOTAL	40,499.5	41,049.5	+ 550.0	+ 1.4%

Note: Undergraduate course level is defined as 0-499 level courses while Graduate is defined as 500+.

COLLEGE DEPARTMENTS

Credit hours taken in departments in the College of Arts and Sciences for First Summer Sessions 2007 and 2008 are shown in the following table. Of the 53 departments offering courses this summer, 27 departments report increases, while 25 departments report decreases from last year. One department records no change. Two departments, Latin American Studies and Medieval Studies, are listed in the table even though they offered no courses this summer, because they did offer courses last summer.

Summer sessions have a different distribution of credit hours than the fall, in part due to special workshops offered during the summer months. In Fall 2007, Mathematics, Psychology, English, Biology, and Spanish and Portuguese had the highest shares of credit hours within the College. For First Summer Session 2008, Overseas Studies, Psychology, Economics, Mathematics and Biology have the highest shares. Shaded cells indicate departments that experienced increases of more than 50 credit hours as well as a corresponding percentage increase from last year to this year of more than 50%. The only department matching this criteria for First Summer Session is Apparel Merchandising and Interior Design. Other departments with noteworthy increases include English (+224 credit hours), Economics (+222 credit hours), Mathematics (+173 credit hours), and Physics (+146 credit hours).

TABLE 21: NET CREDIT HOURS BY ARTS AND SCIENCES DEPARTMENT

Course Department	First Summer Session		Change	Percent Change
	2007	2008		
African American and African Diaspora Studies	292.0	153.0	- 139.0	- 47.6%
Animal Behavior	0.0	3.0	+ 3.0	-----
African Studies	0.0	3.0	+ 3.0	-----
American Studies	24.0	38.0	+ 14.0	+ 58.3%
Anthropology	324.0	387.0	+ 63.0	+ 19.4%
Apparel Merchandising & Int Design	84.0	192.0	+ 108.0	+ 128.6%
Arts and Sciences Career Services	0.0	160.0	+ 160.0	-----
Astronomy	564.0	567.0	+ 3.0	+ 0.5%
Biochemistry	57.5	93.0	+ 35.5	+ 61.7%
Biology	1,127.5	1,001.0	- 126.5	- 11.2%
Central Eurasian Studies	23.0	7.0	- 16.0	- 69.6%
Chemistry	257.0	246.0	- 11.0	- 4.3%
Classical Studies	74.0	40.0	- 34.0	- 45.9%
Collins Living Learning Center	54.0	75.0	+ 21.0	+ 38.9%
Cognitive Science	6.0	12.0	+ 6.0	+ 100.0%
Communication & Culture	747.0	742.0	- 5.0	- 0.7%
Comparative Literature	77.0	7.0	- 70.0	- 90.9%
Criminal Justice	715.0	675.0	- 40.0	- 5.6%
East Asian Language & Culture	103.0	103.0	0.0	0.0%
Economics	1,451.0	1,673.0	+ 222.0	+ 15.3%
English	1,011.0	1,235.0	+ 224.0	+ 22.2%
Fine Arts	995.0	846.0	- 149.0	- 15.0%
Folklore	287.0	294.0	+ 7.0	+ 2.4%
French & Italian	464.0	434.0	- 30.0	- 6.5%
Gender Studies	318.0	189.0	- 129.0	- 40.6%
Geography	364.0	336.0	- 28.0	- 7.7%
Geological Sciences	194.0	236.0	+ 42.0	+ 21.6%
Germanic Studies	332.0	195.0	- 137.0	- 41.3%

Note: Credit hours enrolled in cross-listed courses are counted under the home department of the course.

TABLE 21: NET CREDIT HOURS BY ARTS AND SCIENCES DEPARTMENT (CONTINUED)

Course Department	First Summer Session		Change	Percent Change
	2007	2008		
History	651.0	687.0	+ 36.0	+ 5.5%
History & Philosophy of Science	30.0	68.0	+ 38.0	+ 126.7%
Honors Division	54.0	42.0	- 12.0	- 22.2%
India Studies	0.0	3.0	+ 3.0	-----
Individualized Major Program	16.0	18.0	+ 2.0	+ 12.5%
International Studies	93.0	39.0	- 54.0	- 58.1%
Latin American Studies	9.0	0.0	- 9.0	- 100.0%
Linguistics	112.0	80.0	- 32.0	- 28.6%
Mathematics	1,391.0	1,564.0	+ 173.0	+ 12.4%
Medieval Studies	3.0	0.0	- 3.0	- 100.0%
Near Eastern Languages & Cultures	136.0	97.0	- 39.0	- 28.7%
Neural Sciences	13.0	5.0	- 8.0	- 61.5%
Overseas Studies	1,729.0	1,712.0	- 17.0	- 1.0%
Philosophy	175.0	225.0	+ 50.0	+ 28.6%
Physics	653.0	799.0	+ 146.0	+ 22.4%
Political Science	507.0	596.0	+ 89.0	+ 17.6%
Psychology	1,655.0	1,470.0	- 185.0	- 11.2%
Religious Studies	212.0	194.0	- 18.0	- 8.5%
Russian & East European Institute	6.0	3.0	- 3.0	- 50.0%
Slavics	0.0	3.0	+ 3.0	-----
Sociology	842.0	875.0	+ 33.0	+ 3.9%
Second Language Studies	12.0	30.0	+ 18.0	+ 150.0%
Spanish & Portuguese	931.0	847.0	- 84.0	- 9.0%
Speech & Hearing Sciences	581.0	559.0	- 22.0	- 3.8%
Telecommunications	758.0	825.0	+ 67.0	+ 8.8%
Theater & Drama	30.0	39.0	+ 9.0	+ 30.0%
West European Studies	36.0	16.0	- 20.0	- 55.6%
TOTAL	20,580.0	20,738.0	+ 158.0	+ 0.8%

Note: Credit hours enrolled in cross-listed courses are counted under the home department of the course.

GRADE DISTRIBUTION (HISTORICAL)

With many universities across the United States examining their grading systems, the IU-Bloomington Faculty Council approved a recommendation, in the spring of 1994, to create an indexed grade context record for student grade reports and internal records. The goal was to be able to provide students with a more meaningful measure of their performance in a course. The expanded grade context record and subsequent reports have been designed to include: the number of students in a class section, number of students who received the same grade or higher compared to the total number of students in the section who received GPA grades, the distribution of all grades in the section, the percentage of students in the section whose major school or department (for the College of Arts and Sciences or the Graduate School) matches the school or department that is offering the course, the average grade in the section, and the average cumulative GPA of all the students in the section.

A series of products have been developed for the Expanded Grade Context Record, and these include: a Semester Grade Report, Grade Distribution Reports (data source for this section), and a Grade Distribution query on the World Wide Web. The URL for the Web query is <http://registrar.indiana.edu/gradedist.shtml>. The URL for the Web reports used in this section is <http://registrar.indiana.edu/gradedist/>. The grade context report was implemented during Spring 1998 and reports on the Web are available back to Fall 1994.

Course grades and their GPA point equivalents are shown below.

TABLE 22: COURSE GRADES AND GPA POINT EQUIVALENTS

Definitions of Non-GPA Course Grades	
P - Passed (Pass-Fail Option)	NR - No report filed by instructor
S - Satisfactory	NC - No Credit
I - Incomplete	NY - Enrollment in special program
R - Deferred	W - Withdrawn - Passing
	WX - Courses dropped the first week of classes

Grade	GPA Points	Grade	GPA Points	Grade	GPA Points	Grade	GPA Points
A+	4.0	B+	3.3	C+	2.3	D+	1.3
A	4.0	B	3.0	C	2.0	D	1.0
A-	3.7	B-	2.7	C-	1.7	D-	0.7
						F	0.0

The tables on the following pages show the distribution of grades for First Summer Session. The data reflect grades issued to all students in all courses. Historical data (prior to 1995) and the new grade context data (from 1995) will vary slightly because of different formulas and file storage definitions. The historical reporting methodology has been phased out and replaced by the expanded grade context reporting. One difference between the two methodologies is that the grade context report does not include the WZ grade (used to record section changes on internal course records), which has been included in the historical grade reporting. For this report, the historical grade information has been adjusted by removing the WZ grades (historical section changes) from total grades, in order to make the data more comparable with the new grade context reporting.

TABLE 23: HISTORICAL GPA COURSE GRADE DISTRIBUTION

First Summer Sessions	Percentage of GPA Grades					Average Course Grades	Total GPA Grades
	A	B	C	D	F		
1984	38.8%	35.6%	18.1%	4.6%	2.8%	3.01	9,018
1985	36.6%	35.2%	19.3%	5.4%	3.5%	2.94	8,846
1986	41.5%	35.3%	17.4%	3.9%	1.9%	3.09	9,200
1987	39.2%	37.1%	17.9%	3.7%	2.1%	3.06	9,470
1988	39.3%	36.8%	17.8%	4.1%	1.9%	3.06	9,711
1989	41.4%	36.6%	16.5%	3.5%	1.9%	3.10	9,910
1990	40.1%	37.6%	16.4%	4.0%	1.8%	3.09	10,436
1991	41.8%	36.3%	16.0%	3.8%	2.1%	3.10	10,588
1992	44.5%	34.5%	15.5%	3.2%	2.2%	3.13	10,377
1993	45.2%	34.2%	14.3%	3.7%	2.5%	3.14	10,411
1994	43.6%	34.3%	15.2%	4.2%	2.7%	3.10	10,698
1995	45.3%	34.2%	14.7%	3.1%	2.7%	3.14	10,748
1996	42.6%	35.8%	15.2%	3.5%	2.8%	3.09	10,780
1997	43.7%	34.9%	15.2%	3.6%	2.5%	3.11	10,834
1998	43.9%	34.5%	14.8%	3.7%	3.2%	3.10	10,740
1999	43.5%	34.9%	15.2%	3.7%	2.7%	3.10	10,891
2000	45.1%	34.3%	15.1%	3.1%	2.3%	3.14	10,553
2001	46.4%	34.6%	13.5%	3.1%	2.5%	3.17	11,352
2002	47.1%	34.0%	13.7%	2.8%	2.3%	3.18	11,779
2003	48.8%	33.0%	12.8%	2.8%	2.6%	3.20	11,812
2004	48.8%	32.9%	13.1%	2.8%	2.4%	3.20	11,211
2005	46.8%	33.5%	14.8%	2.8%	2.1%	3.18	10,112
2006	47.4%	33.1%	14.1%	3.0%	2.4%	3.17	9,960
2007	51.0%	35.1%	13.6%	2.4%	1.8%	3.24	11,797
2008	47.3%	34.2%	13.7%	3.1%	1.8%	3.19	10,157

Notes:

1. Numeric values of plus and minus grades are included in the calculation of Average Course Grades.
2. Beginning Summer 1995, a slightly different methodology was used. Percentage differences are negligible. The line in the table above marks the change in methodology.

TABLE 24: HISTORICAL TOTAL COURSE GRADES

First Summer Sessions	Percentage of Total Grades										Total Grades
	A	B	C	D	F	S & P Grades	I & R Grades	W Grades	WX Grades	Other Non-GPA Grades	
1984	27.6%	25.4%	12.9%	3.3%	2.0%	3.8%	8.1%	1.8%	10.1%	4.9%	12,659
1985	25.9%	24.8%	13.6%	3.8%	2.4%	3.8%	8.4%	1.6%	9.6%	6.1%	12,539
1986	27.6%	23.4%	11.6%	2.6%	1.2%	3.2%	7.2%	1.4%	11.6%	10.3%	13,850
1987	27.9%	26.4%	12.8%	2.6%	1.5%	3.5%	7.8%	1.1%	10.9%	5.5%	13,305
1988	28.2%	26.3%	12.8%	3.0%	1.4%	4.7%	7.5%	1.2%	9.8%	5.1%	13,549
1989	29.1%	25.8%	11.6%	2.5%	1.3%	5.1%	7.1%	1.4%	9.5%	6.5%	14,087
1990	28.3%	26.5%	11.5%	2.8%	1.3%	4.6%	7.7%	1.8%	9.7%	5.7%	14,805
1991	28.9%	25.2%	11.1%	2.7%	1.4%	4.9%	9.0%	2.0%	9.7%	5.1%	15,275
1992	30.7%	23.8%	10.7%	2.2%	1.5%	5.2%	8.1%	2.2%	9.3%	6.1%	15,031
1993	31.1%	23.5%	9.8%	2.5%	1.7%	4.0%	11.0%	2.5%	9.7%	4.2%	15,151
1994	29.3%	23.0%	10.2%	2.8%	1.8%	4.5%	7.9%	2.8%	10.4%	7.3%	15,937
1995	31.7%	24.0%	10.3%	2.2%	1.9%	4.7%	8.3%	3.1%	5.5%	8.3%	15,334
1996	29.0%	24.4%	10.4%	2.4%	1.9%	4.3%	9.3%	3.5%	5.4%	9.3%	15,819
1997	29.1%	23.3%	10.2%	2.4%	1.7%	4.1%	9.2%	3.3%	5.3%	11.6%	16,265
1998	29.5%	23.1%	9.9%	2.5%	2.1%	3.8%	9.0%	3.3%	5.0%	11.9%	15,994
1999	29.4%	23.5%	10.2%	2.5%	1.8%	5.0%	9.7%	3.6%	4.7%	9.5%	16,151
2000	30.8%	23.5%	10.3%	2.1%	1.5%	4.5%	9.1%	3.5%	4.6%	10.0%	15,448
2001	31.6%	23.5%	9.2%	2.1%	1.7%	4.9%	7.9%	3.2%	4.6%	11.3%	16,681
2002	33.3%	24.0%	9.7%	2.0%	1.6%	3.3%	8.4%	3.4%	4.7%	9.6%	16,682
2003	34.6%	23.4%	9.1%	2.0%	1.8%	3.4%	8.5%	3.2%	5.3%	8.6%	16,644
2004	34.6%	23.3%	9.3%	2.0%	1.7%	3.1%	7.9%	3.1%	4.4%	10.6%	15,811
2005	30.9%	22.1%	9.8%	1.9%	1.4%	1.3%	6.7%	3.1%	7.4%	15.5%	15,320
2006	30.3%	21.1%	9.0%	1.9%	1.5%	1.3%	6.7%	3.4%	6.9%	17.7%	15,573
2007	34.7%	23.9%	9.2%	1.6%	1.3%	2.0%	4.7%	2.8%	7.2%	5.4%	15,497
2008	30.9%	22.4%	9.0%	2.0%	1.2%	1.5%	6.9%	3.3%	7.0%	15.8%	15,514

Notes:

1. Numeric values of plus and minus grades are included in the calculation of Average Course Grades.
2. Beginning Summer 1995, a slightly different methodology was used. Percentage differences are negligible. The line in the table above marks the change in methodology.
3. Beginning Summer 2005, some of the trends in grade distributions are due to business processes in the new Student Information System.

SECOND SUMMER SESSION

HEADCOUNT BY STUDENT LEVEL

Second Summer Session 2008 shows a 2.9% increase in enrollment this year. The record high figure was 9,644, reported Second Summer Session 1981. In the late 1970s and early 1980s, second summer session enrollments were over 9,000 students. Historically, second summer session enrollments were higher than first summer session; however, since 1996, enrollments for first summer session have surpassed those for second summer session.

TABLE 25: ENROLLMENT BY STUDENT LEVEL AND CLASS

Class/Level	Second Summer Sessions		Change	Percent Change
	2007	2008		
Freshman	640	667	+ 27	+ 4.2%
Sophomore	457	443	- 14	- 3.1%
Junior	1,032	1,098	+ 66	+ 6.4%
Senior	1,836	1,777	- 59	- 3.2%
Undergraduate Total	3,965	3,985	+ 20	+ 0.5%
Masters	1,023	1,013	- 10	- 1.0%
Doctoral	877	910	+ 33	+ 3.8%
Graduate Total	1,900	1,923	+ 23	+ 1.2%
Professional Total	181	111	- 70	- 38.7%
High School	9	11	+ 2	+ 22.2%
Special Undergraduate	535	590	+ 55	+ 10.3%
Special Graduate	517	695	+ 178	+ 34.4%
Nondegree Total	1,061	1,296	+ 235	+ 22.1%
TOTAL	7,107	7,315	+ 208	+ 2.9%

The following table shows how students continue to register for second summer session following Continuing Student Registration (CSR) in March. Beginning in 1998, less than half of the students enrolled by midsession had registered during CSR. For the past three years, less than one third had registered during CSR. This year, the lowest percentage of students have registered by the end of CSR.

TABLE 26: NET ENROLLMENT BY REGISTRATION PERIOD

Second Summer Sessions	End of CSR		First Day of Classes		Midsession
	Number Enrolled	Percent	Number Enrolled	Percent	Number Enrolled
1996	4,793	53.6%	8,240	92.1%	8,943
1997	4,386	50.8%	8,150	94.4%	8,632
1998	4,015	48.3%	7,838	94.3%	8,309
1999	3,553	45.0%	7,363	93.4%	7,887
2000	3,386	43.5%	7,111	91.3%	7,786
2001	3,285	41.1%	7,364	92.2%	7,984
2002	3,727	44.3%	7,732	91.9%	8,418
2003	3,391	40.8%	7,810	93.9%	8,317
2004	3,032	38.0%	7,448	93.3%	7,982
2005	2,594	34.2%	7,024	92.7%	7,581
2006	2,168	29.2%	6,839	92.1%	7,428
2007	2,210	31.1%	6,618	93.1%	7,107
2008	2,090	28.6%	6,543	89.4%	7,315

The following two tables show enrollment by student level and enrollment by share since 1974. For Second Summer Session 2008, the undergraduate, graduate and nondegree enrollments are up from last year while the professional enrollment is down. In terms of share of enrollment, only the nondegree share of enrollment is up this year.

TABLE 27: ENROLLMENT BY STUDENT LEVEL

Second Summer Sessions	Undergraduate Total	Graduate Total	Professional Total	Nondegree/ Unclassified Total	Total
1974	3,753	4,641	191	652	9,237
1975	4,115	4,535	163	705	9,518
1976	4,123	4,339	168	850	9,480
1977	4,218	4,009	155	719	9,101
1978	4,025	3,817	244	1,144	9,230
1979	4,220	3,575	220	1,107	9,122
1980	4,629	3,421	229	1,293	9,572
1981	4,681	3,283	261	1,419	9,644
1982	4,740	2,917	236	1,210	9,103
1983	4,814	2,720	205	1,192	8,931
1984	4,395	2,336	229	1,305	8,265
1985	4,337	2,499	223	1,188	8,247
1986	4,229	2,460	213	1,148	8,050
1987	4,275	2,189	272	1,182	7,918
1988	4,478	2,248	245	1,208	8,179
1989	4,485	2,073	232	1,360	8,150
1990	4,771	1,969	219	1,399	8,358
1991	5,029	1,961	262	1,531	8,783
1992	5,023	1,982	281	1,444	8,730
1993	5,051	2,066	280	1,543	8,940
1994	4,908	2,084	316	1,663	8,971
1995	4,946	2,052	320	1,416	8,734
1996	4,977	2,113	354	1,499	8,943
1997	4,909	2,087	342	1,294	8,632
1998	4,816	2,064	366	1,063	8,309
1999	4,504	1,936	335	1,112	7,887
2000	4,276	1,825	343	1,342	7,786
2001	4,405	1,931	372	1,276	7,984
2002	4,971	1,852	353	1,242	8,418
2003	4,925	1,935	295	1,162	8,317
2004	4,603	1,851	309	1,219	7,982
2005	4,383	1,880	143	1,175	7,581
2006	4,113	1,886	146	1,283	7,428
2007	3,965	1,900	181	1,061	7,107
2008	3,985	1,923	111	1,296	7,315

1. Shaded areas indicate record high figures since data were first available in 1974.
2. Effective Fall 1988, auditors (students enrolled in audit hours only) are excluded from headcount figures. Effective Summer 1989, associate level Optometry students are reported in the undergraduate headcount. Previously, all Optometry students were reported in the professional headcount.
3. Effective Summer 1992, Law students could register for both summer sessions. Previously, Law registrations were processed for second summer sessions only.

TABLE 28: SHARE OF ENROLLMENT BY STUDENT LEVEL

Second Summer Sessions	Undergraduate Total	Graduate Total	Professional Total	Nondegree/ Unclassified Total	Total
1974	40.6%	50.2%	2.1%	7.1%	100.0%
1975	43.2%	47.6%	1.7%	7.4%	100.0%
1976	43.5%	45.8%	1.8%	9.0%	100.0%
1977	46.3%	44.1%	1.7%	7.9%	100.0%
1978	43.6%	41.4%	2.6%	12.4%	100.0%
1979	46.3%	39.2%	2.4%	12.1%	100.0%
1980	48.4%	35.7%	2.4%	13.5%	100.0%
1981	48.5%	34.0%	2.7%	14.7%	100.0%
1982	52.1%	32.0%	2.6%	13.3%	100.0%
1983	53.9%	30.5%	2.3%	13.3%	100.0%
1984	53.2%	28.3%	2.8%	15.8%	100.0%
1985	52.6%	30.3%	2.7%	14.4%	100.0%
1986	52.5%	30.6%	2.6%	14.3%	100.0%
1987	54.0%	27.6%	3.4%	14.9%	100.0%
1988	54.7%	27.5%	3.0%	14.8%	100.0%
1989	55.0%	25.4%	2.8%	16.7%	100.0%
1990	57.1%	23.6%	2.6%	16.7%	100.0%
1991	57.3%	22.3%	3.0%	17.4%	100.0%
1992	57.5%	22.7%	3.2%	16.5%	100.0%
1993	56.5%	23.1%	3.1%	17.3%	100.0%
1994	54.7%	23.2%	3.5%	18.5%	100.0%
1995	56.6%	23.5%	3.7%	16.2%	100.0%
1996	55.7%	23.6%	4.0%	16.8%	100.0%
1997	56.9%	24.2%	4.0%	15.0%	100.0%
1998	58.0%	24.8%	4.4%	12.8%	100.0%
1999	57.1%	24.5%	4.2%	14.1%	100.0%
2000	54.9%	23.4%	4.4%	17.2%	100.0%
2001	55.2%	24.2%	4.7%	16.0%	100.0%
2002	59.1%	22.0%	4.2%	14.8%	100.0%
2003	59.2%	23.3%	3.5%	14.0%	100.0%
2004	57.7%	23.2%	3.9%	15.3%	100.0%
2005	57.8%	24.8%	1.9%	15.5%	100.0%
2006	55.4%	25.4%	2.0%	17.3%	100.0%
2007	55.8%	26.7%	2.5%	14.9%	100.0%
2008	54.5%	26.3%	1.5%	17.7%	100.0%

1. Shaded areas indicate record high figures since data were first available in 1974.
2. Effective Fall 1988, auditors (students enrolled in audit hours only) are excluded from headcount figures. Effective Summer 1989, associate level Optometry students are reported in the undergraduate headcount. Previously, all Optometry students were reported in the professional headcount.
3. Effective Summer 1992, Law students could register for both summer sessions. Previously, Law registrations were processed for second summer sessions only.

AUDIT ENROLLMENTS

Background information on Audit Enrollments is provided in the First Summer Session Audit Enrollments section of this report. An audit summary for Second Summer Sessions 2007 and 2008 is shown below. Audit enrollments by course school are also shown below.

This session there are seven auditors, a decrease from last year. However, the number of enrolled students who are taking at least one audit course has increased this year.

TABLE 29: AUDIT ENROLLMENTS

	Second Summer Sessions		Change	Percent Change
	2007	2008		
Students				
Auditors	14	7	- 7	- 50.0%
Auditing Students	16	19	+ 3	+ 18.8%
Audit Enrollments				
by Auditors	20	12	- 8	- 40.0%
by Auditing Students	20	21	+ 1	+ 5.0%
Audit Hours				
by Auditors	45.0	27.5	- 17.5	- 38.9%
by Auditing Students	22.5	22.5	0	0.0%

TABLE 30: AUDIT ENROLLMENTS BY COURSE SCHOOL AND DEPARTMENT

School/Department	Second Summer Sessions	
	2007	2008
Arts and Sciences		
Biology	0	3
Central Eurasian Studies	4	0
Chemistry	2	2
Classical Studies	1	0
Economics	0	0
English	1	2
French and Italian	0	2
German	2	2
Mathematics	3	2
Psychology	0	1
Religious Studies	1	0
Slavic Lang. & Literatures	2	0
Spanish & Portuguese	4	1
Speech & Hearing Sciences	10	0
Arts and Sciences Total	30	15
Education	0	6
HPER	2	1
Informatics	0	4
Library and Information Science	6	6
Music	2	1
TOTAL AUDIT ENROLLMENTS	40	33

CREDIT HOUR LOAD

The campus credit hour load for Second Summer Session 2008 is 4.17 credit hours, a slight decrease from last year. This decrease is due to decreases in the undergraduate and graduate credit hour loads (4.61 and 3.69 credit hours, respectively).

Within the undergraduate level, the freshman and sophomore credit hour loads show increases, while the junior credit hour load shows a decrease and the senior credit hour load remains the same.

Since the record high credit hour load in 1986 for freshman at 9.10, the credit hour loads for freshmen in recent years is more than 4 credit hours lower, showing 4.79 this session.

TABLE 31: HISTORICAL AVERAGE CREDIT HOUR LOAD

Second Summer Sessions	Freshman	Sophomore	Junior	Senior	Undergraduate Total	Graduate	Professional	Non-Degree/ Unclassified	Total
1978	7.06	5.61	5.57	5.50	5.78	5.25	5.86	4.13	5.36
1979	7.13	5.51	5.51	5.66	5.82	5.14	6.74	4.47	5.41
1980	6.99	5.31	5.74	5.75	5.86	5.08	6.79	4.15	5.37
1981	7.27	5.41	5.35	5.53	5.69	4.94	6.50	4.09	5.22
1982	7.67	5.18	5.43	5.42	5.71	4.86	6.61	4.34	5.28
1983	7.85	5.30	5.30	5.33	5.65	4.82	6.44	4.32	5.24
1984	8.15	4.99	5.18	5.40	5.60	4.63	5.79	4.88	5.22
1985	8.94	4.92	5.03	5.31	5.57	4.69	5.63	4.42	5.14
1986	9.10	5.02	5.11	5.28	5.62	4.55	5.18	4.86	5.15
1987	9.07	4.85	5.14	5.15	5.54	4.63	4.94	4.73	5.15
1988	8.93	5.17	5.12	5.01	5.51	4.56	5.77	4.59	5.12
1989	9.00	5.03	5.09	5.06	5.50	4.46	5.08	4.75	5.10
1990	7.71	4.91	5.04	4.99	5.33	4.51	5.04	4.44	4.98
1991	7.24	4.87	4.97	5.04	5.29	4.32	4.94	4.33	4.89
1992	6.15	4.85	4.85	4.90	5.07	4.28	3.97	4.11	4.70
1993	5.90	4.71	4.87	5.07	5.11	4.25	4.25	3.94	4.68
1994	5.98	4.59	4.78	4.91	4.99	4.08	4.87	3.67	4.53
1995	5.96	4.84	4.74	4.94	5.02	3.97	4.64	3.95	4.58
1996	5.14	4.92	4.85	5.08	5.02	3.81	4.65	3.47	4.46
1997	4.47	4.84	4.79	5.05	4.89	3.74	4.66	3.27	4.36
1998	4.46	4.81	4.79	5.02	4.87	3.77	4.66	3.56	4.42
1999	4.64	4.99	4.86	5.09	4.96	3.76	4.83	3.63	4.47
2000	4.93	4.89	4.74	4.91	4.87	3.81	4.86	3.16	4.32
2001	4.83	4.89	5.09	4.97	4.97	3.81	4.92	3.56	4.46
2002	4.52	4.84	4.98	5.01	4.91	4.00	4.88	3.71	4.53
2003	4.54	4.76	5.05	4.94	4.89	4.02	4.92	3.67	4.52
2004	5.03	4.79	5.00	5.14	5.06	3.96	4.89	3.85	4.61
2005	4.80	4.63	4.82	4.96	4.86	3.89	3.17	3.89	4.43
2006	4.75	4.41	4.51	4.76	4.66	3.76	3.05	3.42	4.19
2007	4.73	4.50	4.56	4.64	4.62	3.72	3.41	3.55	4.19
2008	4.79	4.63	4.43	4.64	4.61	3.69	3.55	3.60	4.17
Change from Last Year	+ 0.06	+ 0.13	- 0.13	0.0	- 0.01	- 0.03	+ 0.14	+ 0.05	- 0.01

Note: Shaded areas indicate record highs since data were first available in 1978.

GENDER

For Second Summer Session 2008, the total number of female students (3,947) shows an increase from last year. The number of undergraduate (1,966) and nondegree (863) female students show increases, while all other female populations show decreases.

The number of male students, at 3,368, shows a decrease this year, due to decreases at the professional and non-degree levels.

TABLE 32: ENROLLMENT BY GENDER

Second Summer Sessions	Undergraduate		Graduate		Professional		Nondegree		Total	
	Female	Male	Female	Male	Female	Male	Female	Male	Female	Male
1986	2,257	1,973	1,271	1,193	106	141	614	492	4,248	3,799
1987	2,345	1,930	1,162	1,027	114	158	706	476	4,327	3,591
1988	2,427	2,053	1,197	1,055	105	140	661	539	4,390	3,787
1989	2,404	2,081	1,077	996	101	131	748	608	4,330	3,816
1990	2,633	2,138	1,031	938	101	118	761	638	4,526	3,832
1991	2,739	2,290	1,043	918	121	141	897	634	4,800	3,983
1992	2,688	2,335	1,051	931	137	144	867	577	4,743	3,987
1993	2,668	2,383	1,106	960	125	155	917	626	4,816	4,124
1994	2,596	2,312	1,123	961	153	163	963	700	4,835	4,136
1995	2,617	2,329	1,076	976	157	163	821	595	4,671	4,063
1996	2,652	2,325	1,128	985	173	181	863	636	4,816	4,127
1997	2,647	2,262	1,099	988	152	190	722	572	4,620	4,012
1998	2,560	2,256	1,099	965	177	189	583	480	4,419	3,890
1999	2,358	2,146	1,033	903	161	174	641	471	4,193	3,694
2000	2,188	2,088	978	847	163	180	835	507	4,164	3,622
2001	2,251	2,154	1,004	927	173	199	746	530	4,174	3,810
2002	2,441	2,530	981	871	169	184	776	466	4,367	4,051
2003	2,448	2,477	1,011	924	143	152	741	421	4,343	3,974
2004	2,261	2,342	986	865	156	153	810	409	4,213	3,769
2005	2,167	2,216	1,057	823	91	52	763	412	4,078	3,503
2006	2,079	2,034	1,053	833	87	59	763	520	3,982	3,446
2007	1,956	2,009	1,066	834	85	96	613	448	3,720	3,387
2008	1,966	2,019	1,054	869	64	47	863	433	3,947	3,368
Change from Last Year	+ 10	+ 10	- 12	+ 35	- 21	- 49	+ 250	- 15	+ 227	- 19
	+ 0.5%	+ 0.5%	- 1.1%	+ 4.2%	- 24.7%	- 51.0%	+ 40.8%	- 3.3%	+ 6.1%	- 0.6%

Note: Shaded areas indicate record-high figures since 1986.

The share of female students (54.0%) shows an increase of 1.7 percentage points from last year, due to increases in the shares of female students at the professional and nondegree levels. The share of nondegree female students (66.6%) is a record-high share.

The share of male students (46.0%) shows a decrease, as the shares of male students at professional and nondegree levels show decreases.

TABLE 33: SHARE OF ENROLLMENT BY GENDER

Second Summer Sessions	Undergraduate		Graduate		Professional		Nondegree		Total	
	Female	Male	Female	Male	Female	Male	Female	Male	Female	Male
1986	53.4%	46.6%	51.6%	48.4%	42.9%	57.1%	55.5%	44.5%	52.8%	47.2%
1987	54.9%	45.1%	53.1%	46.9%	41.9%	58.1%	59.7%	40.3%	54.6%	45.4%
1988	54.2%	45.8%	53.2%	46.8%	42.9%	57.1%	55.1%	44.9%	53.7%	46.3%
1989	53.6%	46.4%	52.0%	48.0%	43.5%	56.5%	55.2%	44.8%	53.2%	46.8%
1990	55.2%	44.8%	52.4%	47.6%	46.1%	53.9%	54.4%	45.6%	54.2%	45.8%
1991	54.5%	45.5%	53.2%	46.8%	46.2%	53.8%	58.6%	41.4%	54.7%	45.3%
1992	53.5%	46.5%	53.0%	47.0%	48.8%	51.2%	60.0%	40.0%	54.3%	45.7%
1993	52.8%	47.2%	53.5%	46.5%	44.6%	55.4%	59.4%	40.6%	53.9%	46.1%
1994	52.9%	47.1%	53.9%	46.1%	48.4%	51.6%	57.9%	42.1%	53.9%	46.1%
1995	52.9%	47.1%	52.4%	47.6%	49.1%	50.9%	58.0%	42.0%	53.5%	46.5%
1996	53.3%	46.7%	53.4%	46.6%	48.9%	51.1%	57.6%	42.4%	53.9%	46.1%
1997	53.9%	46.1%	52.7%	47.3%	44.4%	55.6%	55.8%	44.2%	53.5%	46.5%
1998	53.2%	46.8%	53.2%	46.8%	48.4%	51.6%	54.8%	45.2%	53.2%	46.8%
1999	52.4%	47.6%	53.4%	46.6%	48.1%	51.9%	57.6%	42.4%	53.2%	46.8%
2000	51.2%	48.8%	53.6%	46.4%	47.5%	52.5%	62.2%	37.8%	53.5%	46.5%
2001	51.1%	48.9%	52.0%	48.0%	46.5%	53.5%	58.5%	41.5%	52.3%	47.7%
2002	49.1%	50.9%	53.0%	47.0%	47.9%	52.1%	62.5%	37.5%	51.9%	48.1%
2003	49.7%	50.3%	52.2%	47.8%	48.5%	51.5%	63.8%	36.2%	52.2%	47.8%
2004	49.1%	50.9%	53.3%	46.7%	50.5%	49.5%	66.4%	33.6%	52.8%	47.2%
2005	49.4%	50.6%	56.2%	43.8%	63.6%	36.4%	64.9%	35.1%	53.8%	46.2%
2006	50.5%	49.5%	55.8%	44.2%	59.6%	40.4%	59.5%	40.5%	53.6%	46.4%
2007	49.3%	50.7%	56.1%	43.9%	47.0%	53.0%	57.8%	42.2%	52.3%	47.7%
2008	49.3%	50.7%	54.8%	45.2%	57.7%	42.3%	66.6%	33.4%	54.0%	46.0%

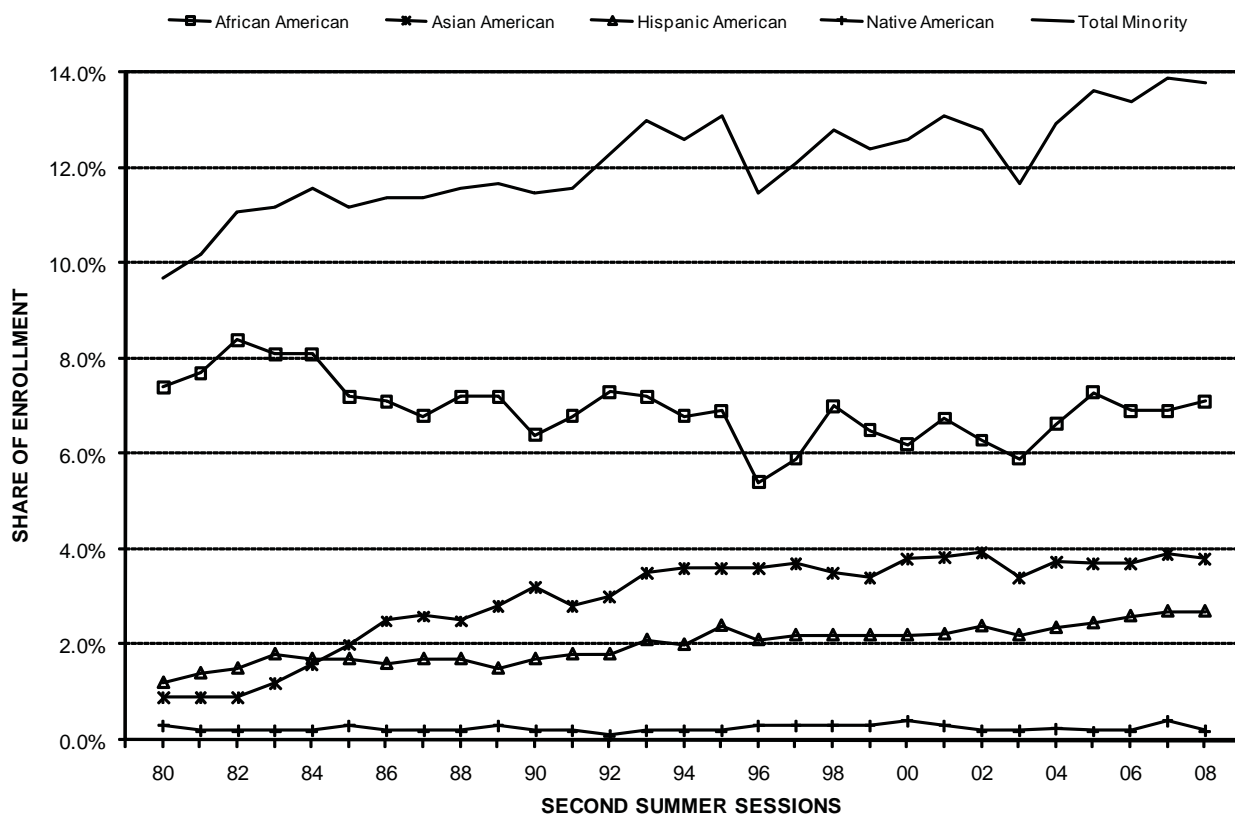
Note: Shaded areas indicate record-high figures since 1986.

ETHNIC GROUPS

Ethnic group is self-reported by students who attend Indiana University-Bloomington. In addition, students have the option to exclude ethnic information and may request its removal from all records. Indiana University reports ethnic information to the U.S. Department of Education and complies with Title VI of the Civil Rights Act of 1964 and Title IX of the Education Amendment of 1972. Ethnic data have been collected at Indiana University-Bloomington since 1973.

The total U.S. minority share of enrollment for Second Summer Session (African, Asian, Hispanic and Native Americans) is down to 13.8% this year from the record-high figure reported last year (13.9%). This decrease is due to losses for Asian (3.8%), and Native (0.2%) Americans. The African American share shows an increase to 7.1% while the Hispanic American share of enrollment remains the same at 2.7% this year.

FIGURE 6: U.S. MINORITY SHARE OF ENROLLMENT



The following figure shows shares of total enrollment by ethnic group. At 15.3%, Non-U.S. students show a record high share of enrollment. The share of enrollment for White Americans shows a decrease to 68.8%, the lowest figure on record, while the figure for Unknown increases to 2.1%. The Unknown category is comprised of students who refuse to provide ethnic information, students who are considered “Other American” (often representing individuals from more than one race), and students whose ethnic origin has not yet been collected.

FIGURE 7: SHARE OF ENROLLMENT BY ETHNIC GROUP

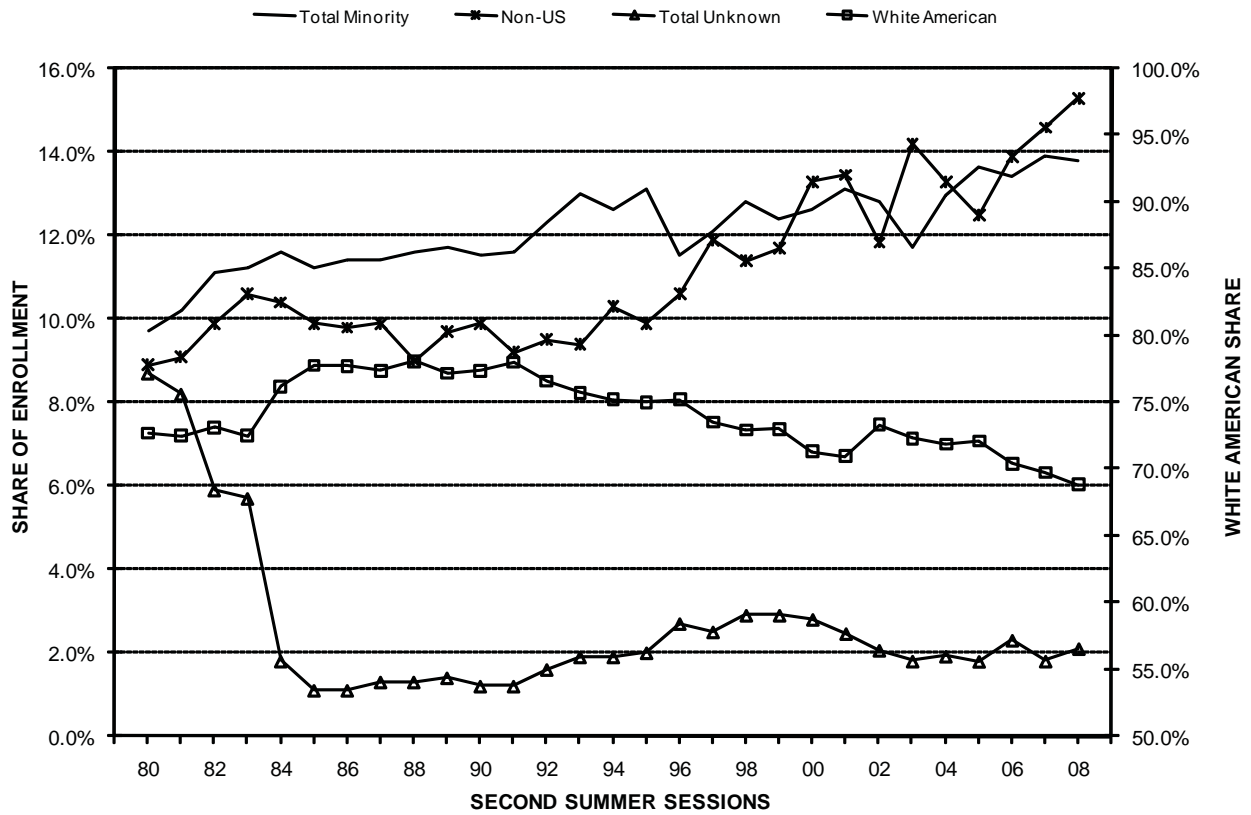


TABLE 34: ENROLLMENT BY ETHNIC GROUP

Second Summer Sessions	African American	Asian American	Hispanic American	Native American	Total Minority	White	Non-U.S.	Other American	Refused & Uncoded	Total Unknown	TOTAL	
1980	705	82	112	27	926	6,959	855	Data Not Available		832	9,572	
1981	739	85	135	23	982	6,996	875			791	9,644	
1982	763	85	138	21	1,007	6,657	902			537	9,103	
1983	724	106	157	16	1,003	6,478	950			500	8,931	
1984	666	134	142	19	961	6,301	856			147	8,265	
1985	591	166	140	25	922	6,413	813			99	8,247	
1986	574	198	127	18	917	6,258	786			89	8,050	
1987	541	207	138	18	904	6,129	786			99	7,918	
1988	590	207	138	16	951	6,384	736			108	8,179	
1989	586	225	120	21	952	6,294	794			110	8,150	
1990	534	264	146	17	961	6,473	825			99	8,358	
1991	597	246	160	15	1,018	6,855	809			101	8,783	
1992	637	264	160	12	1,073	6,690	829			138	8,730	
1993	645	314	184	18	1,161	6,771	841			167	8,940	
1994	606	326	176	19	1,127	6,742	923			179	8,971	
1995	600	316	210	16	1,142	6,548	867			177	8,734	
1996	485	325	188	29	1,027	6,721	947			248	8,943	
1997	510	320	188	30	1,048	6,345	1,024		86	129	215	8,632
1998	578	287	182	22	1,069	6,055	943		113	129	242	8,309
1999	510	267	176	23	976	5,757	924		131	99	230	7,887
2000	479	298	175	29	981	5,554	1,033	127	91	218	7,786	
2001	539	306	178	25	1,048	5,667	1,075	119	75	194	7,984	
2002	529	331	202	17	1,079	6,172	996	93	78	171	8,418	
2003	490	283	180	17	970	6,013	1,183	95	56	151	8,317	
2004	529	298	188	19	1,034	5,734	1,061	93	60	153	7,982	
2005	553	280	186	14	1,033	5,465	947	N/A	136	136	7,581	
2006	510	277	194	15	996	5,230	1,029	57	116	173	7,428	
2007	489	275	194	30	988	4,953	1,040	38	88	126	7,107	
2008	518	280	194	15	1,007	5,034	1,122	35	117	152	7,315	

Notes:

1. Total Minority includes African American, Asian American, Hispanic American, and Native American.
2. Total Unknown includes the categories of Other American and Refused and Uncoded.
3. Data for "Other American" were not available until 1997.
4. Shaded areas represent record-high figures since data were first available in 1980.
5. "N/A" indicates data were not available.

TABLE 35: SHARE OF ENROLLMENT BY ETHNIC GROUP

Second Summer Sessions	African American	Asian American	Hispanic American	Native American	Total Minority	White	Non-U.S.	Other American	Refused & Uncoded	Total Unknown	TOTAL
1980	7.4%	0.9%	1.2%	0.3%	9.7%	72.7%	8.9%			8.7%	100.0%
1981	7.7%	0.9%	1.4%	0.2%	10.2%	72.5%	9.1%			8.2%	100.0%
1982	8.4%	0.9%	1.5%	0.2%	11.1%	73.1%	9.9%			5.9%	100.0%
1983	8.1%	1.2%	1.8%	0.2%	11.2%	72.5%	10.6%			5.6%	100.0%
1984	8.1%	1.6%	1.7%	0.2%	11.6%	76.2%	10.4%			1.8%	100.0%
1985	7.2%	2.0%	1.7%	0.3%	11.2%	77.8%	9.9%			1.2%	100.0%
1986	7.1%	2.5%	1.6%	0.2%	11.4%	77.7%	9.8%			1.1%	100.0%
1987	6.8%	2.6%	1.7%	0.2%	11.4%	77.4%	9.9%			1.3%	100.0%
1988	7.2%	2.5%	1.7%	0.2%	11.6%	78.1%	9.0%	Data Not Available		1.3%	100.0%
1989	7.2%	2.8%	1.5%	0.3%	11.7%	77.2%	9.7%			1.3%	100.0%
1990	6.4%	3.2%	1.7%	0.2%	11.5%	77.4%	9.9%			1.2%	100.0%
1991	6.8%	2.8%	1.8%	0.2%	11.6%	78.0%	9.2%			1.1%	100.0%
1992	7.3%	3.0%	1.8%	0.1%	12.3%	76.6%	9.5%			1.6%	100.0%
1993	7.2%	3.5%	2.1%	0.2%	13.0%	75.7%	9.4%			1.9%	100.0%
1994	6.8%	3.6%	2.0%	0.2%	12.6%	75.2%	10.3%			2.0%	100.0%
1995	6.9%	3.6%	2.4%	0.2%	13.1%	75.0%	9.9%			2.0%	100.0%
1996	5.4%	3.6%	2.1%	0.3%	11.5%	75.2%	10.6%			2.8%	100.0%
1997	5.9%	3.7%	2.2%	0.3%	12.1%	73.5%	11.9%	1.0%	1.5%	2.5%	100.0%
1998	7.0%	3.5%	2.2%	0.3%	12.9%	72.9%	11.3%	1.4%	1.6%	2.9%	100.0%
1999	6.5%	3.4%	2.2%	0.3%	12.4%	73.0%	11.7%	1.7%	1.3%	2.9%	100.0%
2000	6.2%	3.8%	2.2%	0.4%	12.6%	71.3%	13.3%	1.6%	1.2%	2.8%	100.0%
2001	6.8%	3.8%	2.2%	0.3%	13.1%	71.0%	13.5%	1.5%	0.9%	2.4%	100.0%
2002	6.3%	3.9%	2.4%	0.2%	12.8%	73.3%	11.8%	1.1%	0.9%	2.0%	100.0%
2003	5.9%	3.4%	2.2%	0.2%	11.7%	72.3%	14.2%	1.1%	0.7%	1.8%	100.0%
2004	6.6%	3.7%	2.4%	0.2%	13.0%	71.8%	13.3%	1.2%	0.8%	1.9%	100.0%
2005	7.3%	3.7%	2.5%	0.2%	13.6%	72.1%	12.5%	N/A	1.8%	1.8%	100.0%
2006	6.9%	3.7%	2.6%	0.2%	13.4%	70.4%	13.9%	0.8%	1.6%	2.3%	100.0%
2007	6.9%	3.9%	2.7%	0.4%	13.9%	69.7%	14.6%	0.5%	1.2%	1.8%	100.0%
2008	7.1%	3.8%	2.7%	0.2%	13.8%	68.8%	15.3%	0.5%	1.6%	2.1%	100.0%

Notes:

1. Total Minority includes African American, Asian American, Hispanic American, and Native American.
2. Total Unknown includes the categories of Other American and Refused and Uncoded.
3. Data for "Other American" were not available until 1997.
4. Shaded areas represent record-high figures since data were first available in 1980.
5. "N/A" indicates data were not available.

The table on the following pages show enrollment and share of enrollment by ethnic group, class and level. There are enrollment increases for African and Asian Americans and a decrease for Native Americans. Hispanic American enrollment is the same as last year. There are increases for White Americans and for those who have declined to select an ethnic category. Other Americans show a decrease in enrollment this year. Non U.S. students show an increase in enrollment this year.

**TABLE 36: COMPARISON OF ENROLLMENT AND SHARE BY ETHNIC GROUPS, CLASS AND LEVEL
SECOND SUMMER SESSIONS**

Class and Level	AFRICAN AMERICAN						Class and Level	ASIAN AMERICAN					
	ENROLLMENT				SHARE OF CLASS			ENROLLMENT				SHARE OF CLASS	
	2007	2008	Change Number	Change Percent	Last Year	This Year		2007	2008	Change Number	Change Percent	Last Year	This Year
Freshman	191	209	+ 18	+ 9.4%	29.8%	31.3%	Freshman	23	31	+ 8	+ 34.8%	3.6%	4.6%
Sophomore	28	33	+ 5	+ 17.9%	6.1%	7.4%	Sophomore	30	31	+ 1	+ 3.3%	6.6%	7.0%
Junior	54	73	+ 19	+ 35.2%	5.2%	6.6%	Junior	54	61	+ 7	+ 13.0%	5.2%	5.6%
Senior	95	92	- 3	- 3.2%	5.2%	5.2%	Senior	86	67	- 19	- 22.1%	4.7%	3.8%
Undergraduate Total	368	407	+ 39	+ 10.6%	9.3%	10.2%	Undergraduate Total	193	190	- 3	- 1.6%	4.9%	4.8%
Masters	51	37	- 14	- 27.5%	5.0%	3.7%	Masters	20	23	+ 3	+ 15.0%	2.0%	2.3%
Doctoral	29	43	+ 14	+ 48.3%	3.3%	4.7%	Doctoral	29	28	- 1	- 3.4%	3.3%	3.1%
Graduate Total	80	80	0	0.0%	4.2%	4.2%	Graduate Total	49	51	+ 2	+ 4.1%	2.6%	2.7%
Professional Total	12	4	- 8	- 66.7%	6.6%	3.6%	Professional Total	5	7	+ 2	+ 40.0%	2.8%	6.3%
Nondegree Total	29	27	- 2	- 6.9%	2.7%	2.1%	Nondegree Total	28	32	+ 4	+ 14.3%	2.6%	2.5%
CAMPUS TOTAL	489	518	+ 29	+ 5.9%	6.9%	7.1%	CAMPUS TOTAL	275	280	+ 5	+ 1.8%	3.9%	3.8%

Class and Level	HISPANIC AMERICAN					
	ENROLLMENT				SHARE OF CLASS	
	2007	2008	Change Number	Change Percent	Last Year	This Year
Freshman	28	39	+ 11	+ 39.3%	4.4%	5.8%
Sophomore	9	10	+ 1	+ 11.1%	2.0%	2.3%
Junior	25	26	+ 1	+ 4.0%	2.4%	2.4%
Senior	59	48	- 11	- 18.6%	3.2%	2.7%
Undergraduate Total	121	123	+ 2	+ 1.7%	3.1%	3.1%
Masters	15	22	+ 7	+ 46.7%	1.5%	2.2%
Doctoral	34	28	- 6	- 17.6%	3.9%	3.1%
Graduate Total	49	50	+ 1	+ 2.0%	2.6%	2.6%
Professional Total	4	2	- 2	- 50.0%	2.2%	1.8%
Nondegree Total	20	19	- 1	- 5.0%	1.9%	1.5%
CAMPUS TOTAL	194	194	0	0.0%	2.7%	2.7%

Class and Level	NATIVE AMERICAN					
	ENROLLMENT				SHARE OF CLASS	
	2007	2008	Change Number	Change Percent	Last Year	This Year
Freshman	3	0	- 3	- 100.0%	0.5%	0.0%
Sophomore	4	3	- 1	- 25.0%	0.9%	0.7%
Junior	2	2	0	0.0%	0.2%	0.2%
Senior	6	3	- 3	- 50.0%	0.3%	0.2%
Undergraduate Total	15	8	- 7	- 46.7%	0.4%	0.2%
Masters	3	2	- 1	- 33.3%	0.3%	0.2%
Doctoral	9	1	- 8	- 88.9%	1.0%	0.1%
Graduate Total	12	3	- 9	- 75.0%	0.6%	0.2%
Professional Total	0	0	0	---	0.0%	0.0%
Nondegree Total	3	4	+ 1	+ 33.3%	0.3%	0.3%
CAMPUS TOTAL	30	15	- 15	- 50.0%	0.4%	0.2%

Class and Level	U.S. MINORITY					
	ENROLLMENT				SHARE OF CLASS	
	2007	2008	Change Number	Change Percent	Last Year	This Year
Freshman	245	279	+ 34	+ 13.9%	38.3%	41.8%
Sophomore	71	77	+ 6	+ 8.5%	15.5%	17.4%
Junior	135	162	+ 27	+ 20.0%	13.1%	14.8%
Senior	246	210	- 36	- 14.6%	13.4%	11.8%
Undergraduate Total	697	728	+ 31	+ 4.4%	17.6%	18.3%
Masters	89	84	- 5	- 5.6%	8.7%	8.3%
Doctoral	101	100	- 1	- 1.0%	11.5%	11.0%
Graduate Total	190	184	- 6	- 3.2%	10.0%	9.6%
Professional Total	21	13	- 8	- 38.1%	11.6%	11.7%
Nondegree Total	80	82	+ 2	+ 2.5%	7.5%	6.3%
CAMPUS TOTAL	988	1,007	+ 19	+ 1.9%	13.9%	13.8%

TABLE 36: COMPARISON OF ENROLLMENT AND SHARE BY ETHNIC GROUPS, CLASS AND LEVEL
SECOND SUMMER SESSIONS

Class and Level	WHITE AMERICAN					
	ENROLLMENT				SHARE OF CLASS	
	2007	2008	Change Number	Change Percent	Last Year	This Year
Freshman	353	338	- 15	- 4.2%	55.2%	50.7%
Sophomore	329	315	- 14	- 4.3%	72.0%	71.1%
Junior	828	841	+ 13	+ 1.6%	80.2%	76.6%
Senior	1,420	1,382	- 38	- 2.7%	77.3%	77.8%
Undergraduate Total	2,930	2,876	- 54	- 1.8%	73.9%	72.2%
Masters	642	628	- 14	- 2.2%	62.8%	62.0%
Doctoral	524	555	+ 31	+ 5.9%	59.7%	61.0%
Graduate Total	1,166	1,183	+ 17	+ 1.5%	61.4%	61.5%
Professional Total	147	88	- 59	- 40.1%	81.2%	79.3%
Nondegree Total	710	887	+ 177	+ 24.9%	66.9%	68.4%
CAMPUS TOTAL	4,953	5,034	+ 81	+ 1.6%	69.7%	68.8%

Class and Level	OTHER AMERICAN					
	ENROLLMENT				SHARE OF CLASS	
	2007	2008	Change Number	Change Percent	Last Year	This Year
Freshman	14	12	- 2	- 14.3%	2.2%	1.8%
Sophomore	2	3	+ 1	+ 50.0%	0.4%	0.7%
Junior	1	4	+ 3	+ 300.0%	0.1%	0.4%
Senior	11	11	0	0.0%	0.6%	0.6%
Undergraduate Total	28	30	+ 2	+ 7.1%	0.7%	0.8%
Masters	0	0	0	#DIV/0!	0.0%	0.0%
Doctoral	0	0	0	#DIV/0!	0.0%	0.0%
Graduate Total	0	0	0	#DIV/0!	0.0%	0.0%
Professional Total	2	2	0	0.0%	1.1%	1.8%
Nondegree Total	8	3	- 5	- 62.5%	0.8%	0.2%
CAMPUS TOTAL	38	35	- 3	- 7.9%	0.5%	0.5%

Class and Level	NON. U.S.					
	ENROLLMENT				SHARE OF CLASS	
	2007	2008	Change Number	Change Percent	Last Year	This Year
Freshman	16	16	0	0.0%	2.5%	2.4%
Sophomore	46	35	- 11	- 23.9%	10.1%	7.9%
Junior	58	80	+ 22	+ 37.9%	5.6%	7.3%
Senior	149	158	+ 9	+ 6.0%	8.1%	8.9%
Undergraduate Total	269	289	+ 20	+ 7.4%	6.8%	7.3%
Masters	286	295	+ 9	+ 3.1%	28.0%	29.1%
Doctoral	250	253	+ 3	+ 1.2%	28.5%	27.8%
Graduate Total	536	548	+ 12	+ 2.2%	28.2%	28.5%
Professional Total	2	2	0	0.0%	1.1%	1.8%
Nondegree Total	233	283	+ 50	+ 21.5%	22.0%	21.8%
CAMPUS TOTAL	1,040	1,122	+ 82	+ 7.9%	14.6%	15.3%

Class and Level	REFUSED and UNCODED					
	ENROLLMENT				SHARE OF CLASS	
	2007	2008	Change Number	Change Percent	Last Year	This Year
Freshman	12	22	+ 10	+ 83.3%	1.9%	3.3%
Sophomore	9	13	+ 4	+ 44.4%	2.0%	2.9%
Junior	10	11	+ 1	+ 10.0%	1.0%	1.0%
Senior	10	16	+ 6	+ 60.0%	0.5%	0.9%
Undergraduate Total	41	62	+ 21	+ 51.2%	1.0%	1.6%
Masters	6	6	0	0.0%	0.6%	0.6%
Doctoral	2	2	0	0.0%	0.2%	0.2%
Graduate Total	8	8	0	0.0%	0.4%	0.4%
Professional Total	9	6	- 3	- 33.3%	5.0%	5.4%
Nondegree Total	30	41	+ 11	+ 36.7%	2.8%	3.2%
CAMPUS TOTAL	88	117	+ 29	+ 33.0%	1.2%	1.6%

Class and Level	TOTAL ENROLLMENT					
	ENROLLMENT				SHARE OF CLASS	
	2007	2008	Change Number	Change Percent	Last Year	This Year
Freshman	640	667	+ 27	+ 4.2%	100.0%	100.0%
Sophomore	457	443	- 14	- 3.1%	100.0%	100.0%
Junior	1,032	1,098	+ 66	+ 6.4%	100.0%	100.0%
Senior	1,836	1,777	- 59	- 3.2%	100.0%	100.0%
Undergraduate Total	3,965	3,985	+ 20	+ 0.5%	100.0%	100.0%
Masters	1,023	1,013	- 10	- 1.0%	100.0%	100.0%
Doctoral	877	910	+ 33	+ 3.8%	100.0%	100.0%
Graduate Total	1,900	1,923	+ 23	+ 1.2%	100.0%	100.0%
Professional Total	181	111	- 70	- 38.7%	100.0%	100.0%
Nondegree Total	1,061	1,296	+ 235	+ 22.1%	100.0%	100.0%
CAMPUS TOTAL	7,107	7,315	+ 208	+ 2.9%	100.0%	100.0%

RESIDENCE CLASSIFICATION

The number of nonresident students enrolled for Second Summer Session 2008 (3,158) shows an increase of 4.5% from last year. This increase is due to increases in the undergraduate, graduate and nondegree levels; the professional level is the only level to report a decrease.

The increase in number of nonresident students has led to an increase in the share of nonresidents, and at 43.2% this represents the highest share on record since 1989. Shares of nonresidents at the graduate and professional levels have also reached record highs this year at 71.7% and 54.1%, respectively.

The number of resident students (4,157) shows an increase (+1.7%) from last year. The increases at the undergraduate and nondegree levels outweigh the decreases at the graduate and professional levels. The share of resident students (56.8%) is down from last year.

TABLE 37: ENROLLMENT BY RESIDENCE CLASSIFICATION AND STUDENT LEVEL

Second Summer Sessions	Undergraduate		Graduate		Professional		Nondegree		Total	
	Resident	Nonresident	Resident	Nonresident	Resident	Nonresident	Resident	Nonresident	Resident	Nonresident
1989	3,475	1,010	853	1,220	158	74	712	648	5,198	2,952
1990	3,807	964	737	1,232	135	84	677	722	5,356	3,002
1991	3,938	1,091	749	1,212	170	92	742	789	5,599	3,184
1992	3,977	1,046	697	1,285	173	108	679	765	5,526	3,204
1993	3,995	1,056	715	1,351	166	114	783	760	5,659	3,281
1994	3,893	1,015	734	1,350	190	126	804	859	5,621	3,350
1995	3,892	1,054	653	1,399	202	118	752	664	5,499	3,235
1996	3,928	1,049	638	1,475	218	136	731	768	5,515	3,428
1997	3,897	1,012	635	1,452	202	140	555	739	5,289	3,343
1998	3,762	1,054	665	1,399	209	157	505	558	5,141	3,168
1999	3,507	997	612	1,324	189	146	577	535	4,885	3,002
2000	3,255	1,021	582	1,243	183	160	746	596	4,766	3,020
2001	3,343	1,062	594	1,337	195	177	783	493	4,915	3,069
2002	3,642	1,329	593	1,259	187	166	830	412	5,252	3,166
2003	3,556	1,369	632	1,303	147	148	736	426	5,071	3,246
2004	3,371	1,232	551	1,300	150	159	771	448	4,843	3,139
2005	3,192	1,191	616	1,264	71	72	720	455	4,599	2,982
2006	2,960	1,153	554	1,332	79	67	675	608	4,268	3,160
2007	2,879	1,086	578	1,322	85	96	544	517	4,086	3,021
2008	2,890	1,095	545	1,378	51	60	671	625	4,157	3,158
Change from Last Year	+ 11 + 0.4%	+ 9 + 0.8%	- 33 - 5.7%	+ 56 + 4.2%	- 34 - 40.0%	- 36 - 37.5%	+ 127 + 23.3%	+ 108 + 20.9%	+ 71 + 1.7%	+ 137 + 4.5%

Notes:

1. Total includes unclassified students.
2. Shaded areas indicate record highs since 1989.

TABLE 38: SHARE OF ENROLLMENT BY RESIDENCE CLASSIFICATION AND STUDENT LEVEL

Second Summer Sessions	Undergraduate		Graduate		Professional		Nondegree		Total	
	Resident	Nonresident	Resident	Nonresident	Resident	Nonresident	Resident	Nonresident	Resident	Nonresident
1989	77.5%	22.5%	41.1%	58.9%	68.1%	31.9%	52.4%	47.6%	63.8%	36.2%
1990	79.8%	20.2%	37.4%	62.6%	61.6%	38.4%	48.4%	51.6%	64.1%	35.9%
1991	78.3%	21.7%	38.2%	61.8%	64.9%	35.1%	48.5%	51.5%	63.7%	36.3%
1992	79.2%	20.8%	35.2%	64.8%	61.6%	38.4%	47.0%	53.0%	63.3%	36.7%
1993	79.1%	20.9%	34.6%	65.4%	59.3%	40.7%	50.7%	49.3%	63.3%	36.7%
1994	79.3%	20.7%	35.2%	64.8%	60.1%	39.9%	48.3%	51.7%	62.7%	37.3%
1995	78.7%	21.3%	31.8%	68.2%	63.1%	36.9%	53.1%	46.9%	63.0%	37.0%
1996	78.9%	21.1%	30.2%	69.8%	61.6%	38.4%	48.8%	51.2%	61.7%	38.3%
1997	79.4%	20.6%	30.4%	69.6%	59.1%	40.9%	42.9%	57.1%	61.3%	38.7%
1998	78.1%	21.9%	32.2%	67.8%	57.1%	42.9%	47.5%	52.5%	61.9%	38.1%
1999	77.9%	22.1%	31.6%	68.4%	56.4%	43.6%	51.9%	48.1%	61.9%	38.1%
2000	76.1%	23.9%	31.9%	68.1%	53.4%	46.6%	55.6%	44.4%	61.2%	38.8%
2001	75.9%	24.1%	30.8%	69.2%	52.4%	47.6%	61.4%	38.6%	61.6%	38.4%
2002	73.3%	26.7%	32.0%	68.0%	53.0%	47.0%	66.8%	33.2%	62.4%	37.6%
2003	72.2%	27.8%	32.7%	67.3%	49.8%	50.2%	63.3%	36.7%	61.0%	39.0%
2004	73.2%	26.8%	29.8%	70.2%	48.5%	51.5%	63.2%	36.8%	60.7%	39.3%
2005	72.8%	27.2%	32.8%	67.2%	49.7%	50.3%	61.3%	38.7%	60.7%	39.3%
2006	72.0%	28.0%	29.4%	70.6%	54.1%	45.9%	52.6%	47.4%	57.5%	42.5%
2007	72.6%	27.4%	30.4%	69.6%	47.0%	53.0%	51.3%	48.7%	57.5%	42.5%
2008	72.5%	27.5%	28.3%	71.7%	45.9%	54.1%	51.8%	48.2%	56.8%	43.2%

Note: Shaded areas indicate record highs since 1989.

HEADCOUNT BY STUDENT SCHOOL

For Second Summer Session 2008, eleven schools show increases in enrollment, six schools show decreases. The following table shows enrollment by student school and level for second summer sessions. The campus total by student school will not match the campus total for a unique student headcount. In SIS, students can be enrolled in multiple careers and for second summer session there was one dual career student. That student is an MBA/JD major in the Kelley School of Business.

TABLE 39: ENROLLMENT BY STUDENT LEVEL WITHIN STUDENT SCHOOL

Student School	Second Summer Sessions		Change from last year	
	2007	2008	Number	Percent
Arts and Sciences				
Undergraduate	1,505	1,491	- 14	- 0.9%
Graduate	28	29	+ 1	+ 3.6%
Nondegree	369	419	+ 50	+ 13.6%
Total	1,902	1,939	+ 37	+ 1.9%
Business				
Undergraduate	403	417	+ 14	+ 3.5%
Graduate	91	124	+ 33	+ 36.3%
Nondegree	0	0	0	-----
Total	494	541	+ 47	+ 9.5%
Continuing Studies				
Undergraduate	161	170	+ 9	+ 5.6%
Nondegree	86	81	- 5	- 5.8%
Total	247	251	+ 4	+ 1.6%
Education				
Undergraduate	133	114	- 19	- 14.3%
Graduate	269	220	- 49	- 18.2%
Nondegree	371	543	+ 172	+ 46.4%
Total	773	877	+ 104	+ 13.5%
Graduate School				
Graduate	939	961	+ 22	+ 2.3%
Nondegree	117	119	+ 2	+ 1.7%
Total	1,056	1,080	+ 24	+ 2.3%
HPER				
Undergraduate	297	343	+ 46	+ 15.5%
Graduate	82	89	+ 7	+ 8.5%
Nondegree	81	77	- 4	- 4.9%
Total	460	509	+ 49	+ 10.7%
Informatics				
Undergraduate	50	54	+ 4	+ 8.0%
Graduate	23	32	+ 9	+ 39.1%
Nondegree	1	1	0	0.0%
Total	74	87	+ 13	+ 17.6%

TABLE 39: ENROLLMENT BY STUDENT LEVEL WITHIN STUDENT SCHOOL (CONTINUED)

Student School	Second Summer Sessions		Change from last year	
	2007	2008	Number	Percent
Journalism				
Undergraduate	79	67	- 12	- 15.2%
Nondegree	0	1	+ 1	---
Total	79	68	- 11	- 13.9%
Labor Studies				
Undergraduate	0	1	+ 1	-----
Total	0	1	+ 1	-----
Law				
Graduate	19	0	- 19	- 100.0%
Professional	68	57	- 11	- 16.2%
Total	87	57	- 30	- 34.5%
Library & Info Science				
Graduate	133	149	+ 16	+ 12.0%
Nondegree	2	9	+ 7	+ 350.0%
Total	135	158	+ 23	+ 17.0%
Music				
Undergraduate	196	182	- 14	- 7.1%
Graduate	290	255	- 35	- 12.1%
Nondegree	32	35	+ 3	+ 9.4%
Total	518	472	- 46	- 8.9%
Nursing				
Undergraduate	3	13	+ 10	+ 333.3%
Total	3	13	+ 10	+ 333.3%
Optometry				
Undergraduate	1	1	0	0.0%
Professional	113	54	- 59	- 52.2%
Total	114	55	- 59	- 51.8%
SPEA				
Undergraduate	147	147	0	0.0%
Graduate	26	65	+ 39	+ 150.0%
Total	173	212	+ 39	+ 22.5%
Social Work				
Undergraduate	4	3	- 1	- 25.0%
Total	4	3	- 1	- 25.0%
University Division				
Undergraduate	986	982	- 4	- 0.4%
Nondegree	9	11	+ 2	+ 22.2%
Total	995	993	- 2	- 0.2%

CREDIT HOUR LOAD (SCHOOL)

Nine schools show an increase in credit hour load for Second Summer Session 2008, while seven schools show a decrease. The credit hour load in the School of Education is the same as last year. Music (5.80), Social Work (5.00), University Division (4.75), and Continuing Studies (4.70) have the highest credit hour loads among all schools. The following table shows credit hour load by student school for Second Summer Sessions 2007 and 2008. The table also breaks down credit hour load by freshmen and by undergraduates.

TABLE 40: AVERAGE CREDIT HOUR LOAD BY STUDENT SCHOOL

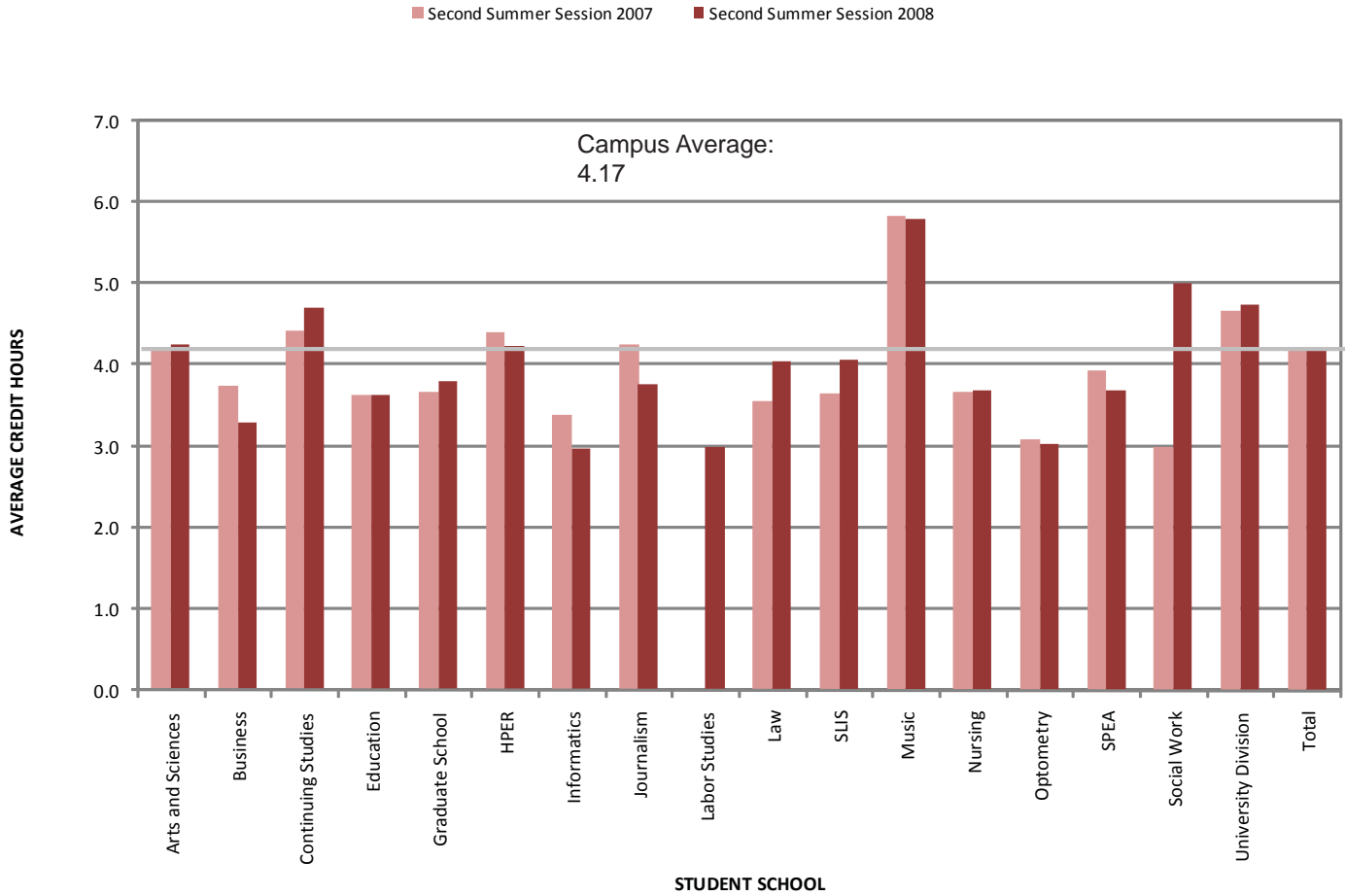
Student School	Freshmen		Undergraduates		All Students	
	Second Summer Sessions		Second Summer Sessions		Second Summer Sessions	
	2007	2008	2007	2008	2007	2008
Arts and Sciences	n/a	3.00	4.53	4.59	4.20	4.26
Business	3.00	5.00	4.25	3.97	3.75	3.30
Continuing Studies	4.44	4.20	4.63	4.94	4.43	4.70
Education	n/a	n/a	4.49	4.43	3.63	3.63
Graduate School	n/a	n/a	n/a	n/a	3.66	3.80
HPER	n/a	n/a	4.76	4.42	4.40	4.24
Informatics	n/a	n/a	4.18	4.18	3.38	2.97
Journalism	n/a	n/a	4.25	3.81	4.25	3.76
Labor Studies	n/a	3.00	n/a	3.00	n/a	3.00
Law	n/a	n/a	n/a	n/a	3.55	4.05
SLIS	n/a	n/a	n/a	n/a	3.65	4.06
Music	5.40	7.00	6.38	6.23	5.84	5.80
Nursing	n/a	n/a	3.67	3.69	3.67	3.69
Optometry	n/a	n/a	6.00	3.00	3.09	3.03
SPEA	n/a	n/a	4.03	4.33	3.94	3.69
Social Work	n/a	n/a	3.00	5.00	3.00	5.00
University Division	4.73	4.83	4.67	4.77	4.67	4.75
TOTAL	4.73	4.79	4.62	4.61	4.19	4.17

Notes:

1. All Students includes undergraduate, graduate, professional, and nondegree students
2. "n/a" indicates no credit hour load.
3. Students enrolled in dual careers (i.e., MBA/JD students) are counted under each school. Thus, there will be two credit hour loads calculated for a dually enrolled student based on a.) the number of credit hours the student is taking as a Business student and b.) the number of credit hours taken as a Law student, for example.

The following chart illustrates the total credit hour load by Student School for Second Summer Sessions 2007 and 2008. The grey line is the average credit hour load across all schools (4.17), which has decreased by .02 from Second Summer Session 2007.

FIGURE 8: AVERAGE CREDIT HOUR LOAD BY STUDENT SCHOOL



CREDIT HOURS AND COURSE ENROLLMENTS

COURSE LEVEL

After last year's decrease in credit hours, credit hours for Second Summer Session 2008 show an increase, due to increases at the 100-level, 400-level, and graduate level courses. This year's increase in credit hours marks a break in the general downward trend of the previous five years. The increase in credit hours (2.6%) is slightly lower than the increase in enrollment (2.9%). The following table shows historical credit hours by course level beginning with Second Summer Session 1976.

TABLE 41: CREDIT HOURS BY COURSE LEVEL

Second Summer Sessions	100-level	200-level	300-level	400-level	Total Undergraduate	Graduate	Total
1976	12,356.0	5,609.0	7,935.0	5,291.0	31,191.0	20,638.6	51,829.6
1977	11,677.0	5,169.5	7,873.0	5,479.3	30,198.8	21,487.0	51,685.8
1978	11,549.0	5,421.0	6,697.0	5,527.0	29,194.0	20,251.4	49,445.4
1979	12,312.0	5,784.5	7,246.0	5,570.0	30,912.5	18,451.8	49,364.3
1980	12,756.0	6,501.0	7,928.0	6,131.0	33,316.0	18,125.5	51,441.5
1981	13,682.0	6,092.0	7,747.0	6,073.0	33,594.0	16,783.5	50,377.5
1982	12,833.0	6,632.0	7,701.0	5,926.0	33,092.0	14,974.5	48,066.5
1983	12,575.0	7,096.0	7,812.0	5,707.0	33,190.0	13,571.0	46,761.0
1984	10,713.0	6,107.0	7,532.0	6,388.0	30,740.0	12,365.0	43,105.0
1985	10,539.0	5,765.0	6,817.0	6,914.0	30,035.0	12,360.0	42,395.0
1986	10,421.0	5,306.0	6,687.0	7,340.0	29,754.0	11,713.0	41,467.0
1987	10,678.0	5,043.0	7,057.0	6,718.0	29,496.0	11,259.5	40,755.5
1988	11,183.0	4,784.0	7,367.0	7,575.5	30,909.5	10,951.0	41,860.5
1989	11,412.0	5,054.0	7,157.0	7,305.5	30,928.5	10,626.0	41,554.5
1990	11,835.0	5,254.0	7,324.0	7,245.5	31,658.5	9,990.0	41,648.5
1991	12,362.0	5,914.0	7,249.0	7,151.5	32,676.5	10,316.0	42,992.5
1992	12,270.0	5,651.0	6,892.0	6,700.0	31,513.0	9,519.5	41,032.5
1993	11,971.0	5,121.0	7,858.0	6,654.0	31,604.0	10,241.5	41,845.5
1994	11,243.0	4,834.0	8,020.5	6,056.0	30,153.5	10,509.0	40,662.5
1995	11,354.0	5,219.0	7,761.5	5,643.5	29,978.0	10,059.5	40,037.5
1996	10,591.0	5,447.0	8,035.5	5,467.5	29,541.0	10,318.5	39,859.5
1997	9,936.0	4,939.0	7,992.0	5,171.5	28,038.5	9,596.0	37,634.5
1998	9,351.0	4,887.0	8,221.5	4,712.0	27,171.5	9,533.5	36,705.0
1999	9,472.0	4,090.0	7,977.0	4,528.0	26,067.0	9,222.5	35,289.5
2000	8,505.0	4,123.0	7,305.5	3,802.0	23,735.5	9,928.5	33,664.0
2001	9,169.0	4,296.0	8,815.0	3,241.0	25,521.0	10,105.5	35,626.5
2002	9,556.0	5,210.0	9,405.5	3,235.0	27,406.5	10,720.5	38,127.0
2003	9,382.0	4,852.0	9,174.0	3,667.0	27,075.0	10,489.0	37,564.0
2004	8,894.0	4,286.0	9,734.5	3,316.0	26,230.5	10,586.5	36,817.0
2005	n/a	n/a	n/a	n/a	n/a	n/a	33,614.5
2006	8,398.0	3,933.0	6,508.0	3,153.0	21,992.0	9,096.0	31,088.0
2007	7,877.0	4,103.0	6,101.0	3,218.5	21,299.5	8,459.0	29,758.5
2008	8,231.0	3,907.5	5,824.0	3,316.0	21,278.5	9,253.5	30,532.0
Change from last year	+ 354.0 + 4.5%	- 195.5 - 4.8%	- 277.0 - 4.5%	+ 97.5 + 3.0%	- 21.0 - 0.1%	+ 794.5 + 9.4%	+ 773.5 + 2.6%

Shaded areas indicate record highs since data were first available in 1976.

The following table shows historical course enrollments as well as the change from last year. The slight increase in total course enrollment (1.9%) is due to the increase in graduate course enrollments (8.8%). Total undergraduate course enrollment shows a decrease from last year (-1.1%). The 100-level courses show an enrollment increase from last year (4.7%), while all others show decreases by at least five percent from last year.

TABLE 42: COURSE ENROLLMENTS BY COURSE LEVEL

Second Summer Sessions	100-level	200-level	300-level	400-level	Total Undergraduate	Graduate	Total
1976	4,950	1,718	2,616	1,700	10,984	8,127	19,111
1977	4,582	1,568	2,679	1,711	10,540	7,517	18,057
1978	4,519	1,706	2,330	1,786	10,341	7,308	17,649
1979	4,923	1,814	2,546	1,758	11,041	6,492	17,533
1980	4,956	2,062	2,632	1,921	11,571	6,281	17,852
1981	5,334	2,034	2,761	1,897	12,026	5,867	17,893
1982	5,020	2,158	2,694	1,876	11,748	5,177	16,925
1983	4,814	2,264	2,795	1,870	11,743	4,760	16,503
1984	4,092	1,985	2,739	1,948	10,764	4,405	15,169
1985	3,980	1,749	2,370	2,170	10,269	4,347	14,616
1986	3,904	1,590	2,451	2,302	10,247	4,194	14,441
1987	3,970	1,515	2,459	2,107	10,051	3,852	13,903
1988	4,070	1,447	2,535	2,352	10,404	3,658	14,062
1989	4,219	1,483	2,453	2,286	10,441	3,688	14,129
1990	4,427	1,527	2,610	2,278	10,842	3,484	14,326
1991	4,556	1,775	2,576	2,268	11,175	3,586	14,761
1992	4,607	1,670	2,435	2,051	10,763	3,338	14,101
1993	4,795	1,503	2,863	2,026	11,187	3,714	14,901
1994	4,575	1,448	2,965	1,834	10,822	3,635	14,457
1995	4,516	1,539	2,904	1,777	10,736	3,525	14,261
1996	4,112	1,627	3,050	1,671	10,460	3,731	14,191
1997	4,090	1,509	3,181	1,509	10,289	3,430	13,719
1998	3,788	1,455	3,326	1,395	9,964	3,578	13,542
1999	3,842	1,223	3,011	1,356	9,432	3,411	12,843
2000	3,640	1,300	2,809	1,198	8,947	3,784	12,731
2001	3,963	1,351	3,353	1,026	9,693	3,804	13,497
2002	3,887	1,646	3,641	1,102	10,276	3,846	14,122
2003	3,800	1,524	3,500	1,258	10,082	3,810	13,892
2004	3,573	1,330	3,710	1,165	9,778	3,763	13,541
2005	n/a	n/a	n/a	n/a	n/a	n/a	n/a
2006	3,464	1,208	2,121	1,091	7,884	3,494	11,378
2007	3,295	1,277	1,936	1,115	7,623	3,275	10,898
2008	3,451	1,193	1,837	1,059	7,540	3,564	11,104
Change from last year	+ 156 + 4.7%	- 84 - 6.6%	- 99 - 5.1%	- 56 - 5.0%	- 83 - 1.1%	+ 289 + 8.8%	+ 206 + 1.9%

Note: Shaded areas indicate record highs since data were first available in 1976.

STUDENT LEVEL

All student levels, with the exception of the professional level, show increases this year. The non-degree level shows the largest increase in credit hours (24.2%) for the Second Summer Session.

The following table shows credit hours by student level and residency for this year and last year. For Second Summer Session 2008, the number of credit hours for nonresidents increases (+4.5%) primarily due to increases at the nondegree and graduate levels, and to a lesser extent at the undergraduate level. Furthermore, the number of credit hours for residents shows slight increases (1.3%) because of gains at the undergraduate and nondegree levels.

TABLE 43: CREDIT HOURS BY STUDENT LEVEL AND RESIDENCE CLASSIFICATION
SECOND SUMMER SESSIONS

Student Level	Residents		Change	Nonresidents		Change	Total		Change
	2007	2008		2007	2008		2007	2008	
Undergraduate	13,336.0	13,348.5	+12.5	4,968.0	5,012.0	+ 44.0	18,304.0	18,360.5	+ 56.5
Percent of Level	72.9%	72.7%	+ 0.1%	27.1%	27.3%	+ 0.9%			+ 0.3%
Graduate	2,241.0	2,099.5	- 141.5	4,833.5	5,005.5	+ 172.0	7,074.5	7,105.0	+ 30.5
Percent of Level	31.7%	29.5%	- 6.3%	68.3%	70.5%	+ 3.6%			+ 0.4%
Professional	286.5	184.5	- 102.0	330.5	210.0	- 120.5	617.0	394.5	- 222.5
Percent of Level	46.4%	46.8%	- 35.6%	53.6%	53.2%	- 36.5%			- 36.1%
Nondegree	1,947.0	2,411.0	+ 464.0	1,816.0	2,261.0	+ 445.0	3,763.0	4,672.0	+ 909.0
Percent of Level	51.7%	51.6%	+ 23.8%	48.3%	48.4%	+ 24.5%			+ 24.2%
TOTAL	17,810.5	18,043.5	+233.0	11,948.0	12,488.5	+ 540.5	29,758.5	30,532.0	+ 773.5
Percent of Level	59.9%	59.1%	+ 1.3%	40.1%	40.9%	+ 4.5%			+ 2.6%

COURSE SCHOOL

The following table shows credit hours by course school and level. Credit hours show increases for Arts and Sciences, Education, Graduate School, HPER, Labor Studies, SLIS, Medical Sciences, Nursing, and SPEA this summer session.

TABLE 44: CREDIT HOURS BY COURSE SCHOOL AND COURSE LEVEL

School	Second Summer Sessions		Change	Percent Change
	2007	2008		
Arts and Sciences				
Undergraduate	14,964.5	14,779.0	- 185.5	- 1.2%
Graduate	2,269.5	2,556.0	+ 286.5	+ 12.6%
Total	17,234.0	17,335.0	+ 101.0	+ 0.6%
Business				
Undergraduate	1,242.0	1,239.0	- 3.0	- 0.2%
Graduate	178.5	166.0	- 12.5	- 7.0%
Total	1,420.5	1,405.0	- 15.5	- 1.1%
Education				
Undergraduate	730.0	755.0	+ 25.0	+ 3.4%
Graduate	2,577.0	3,211.0	+ 634.0	+ 24.6%
Total	3,307.0	3,966.0	+ 659.0	+ 19.9%
Graduate School				
Graduate	12.0	52.0	+ 40.0	+ 333.3%
Total	12.0	52.0	+ 40.0	+ 333.3%

TABLE 44: CREDIT HOURS BY COURSE SCHOOL AND COURSE LEVEL (CONTINUED)

School	Second Summer Sessions		Change	Percent Change
	2007	2008		
HPER				
Undergraduate	1,099.0	1,102.0	+ 3.0	+ 0.3%
Graduate	498.0	581.0	+ 83.0	+ 16.7%
Total	1,597.0	1,683.0	+ 86.0	+ 5.4%
Informatics				
Undergraduate	154.0	160.5	+ 6.5	+ 4.2%
Graduate	126.0	84.5	- 41.5	- 32.9%
Total	280.0	245.0	- 35.0	- 12.5%
Journalism				
Undergraduate	35.0	29.0	- 6.0	- 17.1%
Graduate	107.0	93.0	- 14.0	- 13.1%
Total	142.0	122.0	- 20.0	- 14.1%
Labor Studies				
Undergraduate	151.0	153.0	+ 2.0	+ 1.3%
Total	151.0	153.0	+ 2.0	+ 1.3%
Law				
Graduate	310.0	232.0	- 78.0	- 25.2%
Total	310.0	232.0	- 78.0	- 25.2%
Library & Info Science				
Undergraduate	63.0	42.0	- 21.0	- 33.3%
Graduate	476.0	632.5	+ 156.5	+ 32.9%
Total	539.0	674.5	+ 135.5	+ 25.1%
Medical Sciences				
Undergraduate	559.0	679.0	+ 120.0	+ 21.5%
Graduate	7.0	12.0	+ 5.0	+ 71.4%
Total	566.0	691.0	+ 125.0	+ 22.1%
Music				
Undergraduate	1,845.0	1,726.0	- 119.0	- 6.4%
Graduate	1,406.0	1,252.0	- 154.0	- 11.0%
Total	3,251.0	2,978.0	- 273.0	- 8.4%
Nursing				
Undergraduate	57.0	63.0	+ 6.0	+ 10.5%
Total	57.0	63.0	+ 6.0	+ 10.5%
Optometry				
Undergraduate	10.0	6.0	- 4.0	- 40.0%
Graduate	358.0	187.5	- 170.5	- 47.6%
Total	368.0	193.5	- 174.5	- 47.4%
SPEA				
Undergraduate	390.0	545.0	+ 155.0	+ 39.7%
Graduate	134.0	194.0	+ 60.0	+ 44.8%
Total	524.0	739.0	+ 215.0	+ 41.0%
Social Work				
Undergraduate	0.0	0.0	0.0	-----
Total	0.0	0.0	0.0	-----
Total				
Undergraduate	21,299.5	21,278.5	- 21.0	- 0.1%
Graduate	8,459.0	9,253.5	+ 794.5	+ 9.4%
GRAND TOTAL	29,758.5	30,532.0	+ 773.5	+ 2.6%

COLLEGE DEPARTMENTS

Credit hours taken in departments in the College of Arts and Sciences for Second Summer Sessions 2007 and 2008 are shown in the following table. Of the 51 departments with credit hours this session, 28 departments report increases, and 23 departments report decreases from last year.

Shaded cells indicate departments that experienced increases of more than 50 credit hours as well as a corresponding percentage increase from last year to this year of more than 50%. Those departments include Biochemistry, Comparative Literature, and Geological Sciences. Other departments with noteworthy increases include Economics (+102 credit hours), Psychology (+109 credit hours), and Sociology (+201 credit hours).

TABLE 45: NET CREDIT HOURS BY ARTS AND SCIENCES DEPARTMENT

Arts and Sciences Department	Second Summer Sessions		Change	Percent Change
	2007	2008		
Afro-American and African Diaspora Studies	260.0	317.0	+ 57.0	+ 21.9%
African Studies	0.0	3.0	+ 3.0	-----
Animal Behavior	3.0	6.0	+ 3.0	+ 100.0%
American Studies	78.0	34.0	- 44.0	- 56.4%
Apparel Merchandising & Interior Design	106.0	0.0	- 106.0	- 100.0%
Anthropology	228.0	205.0	- 23.0	- 10.1%
Arts and Sciences Career Services	201.0	0.0	- 201.0	- 100.0%
Astronomy	276.0	267.0	- 9.0	- 3.3%
Biochemistry	46.5	105.0	+ 58.5	+ 125.8%
Biology	519.5	339.0	- 180.5	- 34.7%
Central Eurasian Studies	378.0	337.0	- 41.0	- 10.8%
Chemistry	1,517.0	1,543.0	+ 26.0	+ 1.7%
Criminal Justice	372.0	329.0	- 43.0	- 11.6%
Classical Studies	65.0	47.0	- 18.0	- 27.7%
Communication & Culture	513.0	543.0	+ 30.0	+ 5.8%
Comparative Literature	4.0	71.0	+ 67.0	+ 1675.0%
College of Arts & Sciences	733.0	713.0	- 20.0	- 2.7%
Cognitive Science Program	4.0	14.0	+ 10.0	+ 250.0%
East Asian Languages & Culture	56.0	50.0	- 6.0	- 10.7%
Economics	668.0	770.0	+ 102.0	+ 15.3%
English	1,376.0	1,384.0	+ 8.0	+ 0.6%
Fine Arts	457.0	532.0	+ 75.0	+ 16.4%
Folklore	158.0	147.0	- 11.0	- 7.0%
French & Italian	291.0	312.0	+ 21.0	+ 7.2%

Notes:

1. Credit hours formerly reported in Linguistics are now reported in Second Language Studies.
2. Credit hours enrolled in cross-listed courses are counted under the home department of the course.

TABLE 45: NET CREDIT HOURS BY ARTS AND SCIENCES DEPARTMENT (CONTINUED)

Arts and Sciences Department	Second Summer Sessions		Change	Percent Change
	2007	2008		
Gender Studies	165.0	74.0	- 91.0	- 55.2%
Geography	240.0	238.0	- 2.0	- 0.8%
Geological Sciences	486.0	738.0	+ 252.0	+ 51.9%
Germanic Studies	146.0	215.0	+ 69.0	+ 47.3%
History	454.0	458.0	+ 4.0	+ 0.9%
History & Philosophy of Science	14.0	11.0	- 3.0	- 21.4%
Honors	3.0	0.0	- 3.0	- 100.0%
Individualized Major Program	15.0	21.0	+ 6.0	+ 40.0%
International Studies	30.0	3.0	- 27.0	- 90.0%
Jewish Studies	0.0	3.0	+ 3.0	-----
Latin American Studies	41.0	0.0	- 41.0	- 100.0%
Latino Studies	0.0	3.0	+ 3.0	-----
Leadership Ethics and Social Action	6.0	0.0	- 6.0	- 100.0%
Linguistics	50.0	43.0	- 7.0	- 14.0%
Mathematics	1,419.0	1,398.0	- 21.0	- 1.5%
Medieval Studies	0.0	3.0	+ 3.0	-----
Near Eastern Languages & Culture	179.0	114.0	- 65.0	- 36.3%
Neural Science	8.0	1.0	- 7.0	- 87.5%
Overseas Studies	671.0	728.0	+ 57.0	+ 8.5%
Philosophy	96.0	117.0	+ 21.0	+ 21.9%
Physics	322.0	323.0	+ 1.0	+ 0.3%
Political Science	450.0	395.0	- 55.0	- 12.2%
Psychology	698.0	807.0	+ 109.0	+ 15.6%
Religious Studies	207.0	173.0	- 34.0	- 16.4%
Russian and East European Institute	0.0	3.0	+ 3.0	-----
Second Language Studies	16.0	7.0	- 9.0	- 56.3%
Slavic Languages & Literature	1,341.0	1,338.0	- 3.0	- 0.2%
Sociology	619.0	820.0	+ 201.0	+ 32.5%
Spanish & Portuguese	425.0	344.0	- 81.0	- 19.1%
Speech & Hearing Sciences	493.0	523.0	+ 30.0	+ 6.1%
Telecommunications	153.0	185.0	+ 32.0	+ 20.9%
Theater & Drama	177.0	181.0	+ 4.0	+ 2.3%
TOTAL	17,234.0	17,335.0	+ 101.0	+ 0.6%

Notes:

1. Credit hours formerly reported in Linguistics are now reported in Second Language Studies.
2. Credit hours enrolled in cross-listed courses are counted under the home department of the course.

GRADE DISTRIBUTION (HISTORICAL)

Background information on Grade Distribution is provided in the First Summer Session Grade Distribution section of this report. Grades for Second Summer 2008 will be available in September on the following web site: <http://registrar.indiana.edu/gradedist/>.

The percentage of A grades increased for 2007, while the percentage of all other grades decreased. The average course grade increased to 3.33 this year, the first time the section GPA was higher than a B+ average.

TABLE 46: HISTORICAL GPA COURSE GRADE DISTRIBUTION

Second Summer Sessions	Percentage of GPA Grades					Average Course Grades	Total GPA Grades
	A	B	C	D	F		
1984	48.7%	30.4%	15.2%	3.3%	2.4%	3.18	13,323
1985	48.4%	28.9%	15.3%	4.3%	3.1%	3.13	12,613
1986	48.2%	30.5%	14.9%	3.6%	2.8%	3.16	12,414
1987	49.1%	30.2%	13.9%	3.8%	2.9%	3.17	11,898
1988	47.0%	32.0%	14.0%	3.9%	3.1%	3.14	11,876
1989	47.0%	31.2%	15.2%	3.8%	2.8%	3.14	11,885
1990	49.4%	30.5%	13.2%	3.9%	2.9%	3.17	11,906
1991	49.3%	29.7%	14.2%	3.5%	3.3%	3.16	12,330
1992	50.5%	29.5%	13.7%	3.3%	3.0%	3.19	11,812
1993	49.8%	29.3%	14.2%	3.0%	3.7%	3.17	12,072
1994	50.2%	30.4%	12.8%	3.1%	3.5%	3.18	11,576
1995	49.2%	29.4%	14.6%	3.3%	3.5%	3.15	11,545
1996	50.7%	30.3%	12.6%	3.2%	3.2%	3.19	11,641
1997	50.1%	30.3%	13.9%	3.0%	2.6%	3.20	11,277
1998	50.9%	29.4%	13.5%	3.3%	2.9%	3.19	11,311
1999	51.9%	29.0%	13.1%	3.2%	2.7%	3.22	10,777
2000	53.5%	29.2%	12.3%	2.6%	2.4%	3.27	10,323
2001	49.9%	30.8%	14.3%	2.8%	2.2%	3.21	11,004
2002	50.3%	31.8%	12.6%	2.9%	2.5%	3.22	11,613
2003	53.1%	30.3%	11.8%	2.7%	2.1%	3.27	11,196
2004	52.6%	29.2%	13.4%	2.6%	2.2%	3.25	11,094
2005	54.0%	29.0%	12.3%	2.5%	2.1%	3.28	10,642
2006	55.8%	26.0%	12.7%	2.9%	2.6%	3.27	9,371
2007	56.4%	24.1%	11.4%	2.4%	2.2%	3.33	9,039
2008	n/a	n/a	n/a	n/a	n/a	n/a	n/a

Notes:

1. Numeric values of plus and minus grades are included in the calculation of Average Course Grades.
2. Beginning Summer 1995, a slightly different methodology was used. Percentage differences are negligible. The line in the table above marks the change in methodology.

TABLE 47: HISTORICAL TOTAL COURSE GRADES

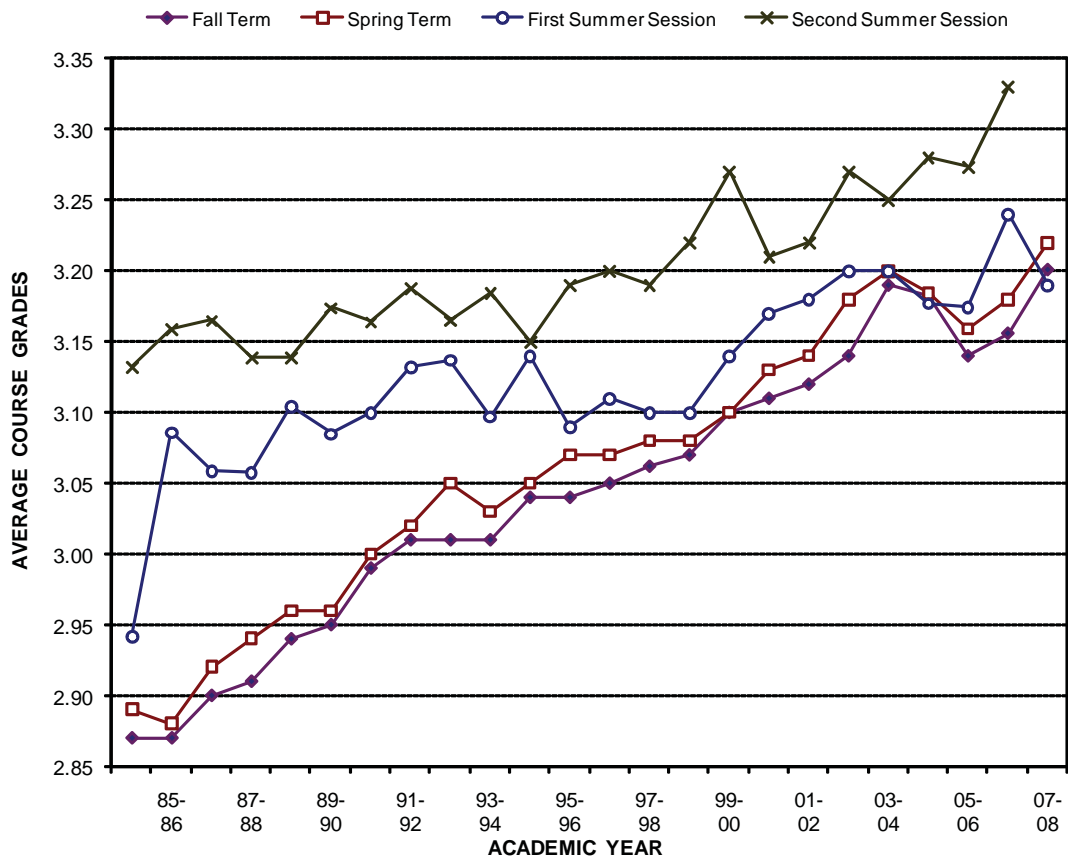
Second Summer Sessions	Percentage of Total Grades										Total Grades
	A	B	C	D	F	S & P Grades	I & R Grades	W Grades	WX Grades	Other Non-GPA Grades	
1984	37.5%	23.3%	11.7%	2.5%	1.8%	2.6%	7.2%	1.8%	9.6%	2.0%	17,338
1985	36.5%	21.8%	11.5%	3.2%	2.4%	2.5%	7.8%	1.6%	9.9%	2.8%	16,729
1986	36.1%	22.9%	11.1%	2.7%	2.1%	3.3%	7.6%	1.7%	9.4%	3.2%	16,572
1987	36.7%	22.6%	10.4%	2.9%	2.2%	3.2%	7.3%	1.4%	9.9%	3.5%	15,922
1988	34.8%	23.6%	10.4%	2.9%	2.3%	3.1%	7.9%	1.4%	9.5%	4.2%	16,070
1989	34.8%	23.2%	11.3%	2.8%	2.1%	3.6%	7.8%	1.2%	9.0%	4.3%	16,029
1990	35.9%	22.1%	9.6%	2.9%	2.1%	3.8%	8.0%	2.4%	8.6%	4.6%	16,390
1991	35.5%	21.4%	10.2%	2.5%	2.4%	3.3%	8.2%	2.5%	9.6%	4.5%	17,150
1992	36.4%	21.2%	9.9%	2.3%	2.2%	3.1%	8.0%	2.9%	9.9%	4.0%	16,394
1993	35.1%	20.7%	10.0%	2.1%	2.6%	3.5%	8.2%	2.8%	8.7%	6.2%	17,112
1994	34.1%	20.6%	8.7%	2.1%	2.4%	5.0%	8.9%	3.9%	9.9%	4.4%	17,055
1995	35.3%	21.1%	10.5%	2.4%	2.5%	4.8%	9.8%	4.3%	4.7%	4.8%	16,112
1996	36.6%	21.9%	9.1%	2.3%	2.3%	3.3%	9.5%	4.2%	5.2%	5.6%	16,127
1997	36.3%	21.9%	10.1%	2.2%	1.9%	3.6%	9.2%	4.6%	4.9%	5.3%	15,579
1998	37.5%	21.7%	10.0%	2.4%	2.2%	4.4%	9.0%	4.4%	4.7%	3.8%	15,335
1999	37.7%	21.1%	9.5%	2.3%	2.0%	6.0%	8.9%	4.2%	4.6%	3.8%	14,862
2000	39.3%	21.4%	9.0%	1.9%	1.7%	5.8%	9.4%	4.1%	3.8%	3.5%	14,070
2001	37.0%	22.8%	10.6%	2.1%	1.6%	5.5%	9.0%	3.9%	3.9%	3.6%	14,838
2002	37.6%	23.8%	9.4%	2.1%	1.9%	5.2%	8.6%	3.6%	4.2%	3.4%	15,509
2003	39.3%	22.4%	8.7%	2.0%	1.5%	5.4%	8.6%	3.5%	3.9%	4.7%	15,135
2004	39.4%	21.9%	10.0%	2.0%	1.6%	5.1%	8.3%	3.4%	3.8%	4.5%	14,819
2005	37.1%	20.0%	8.4%	1.7%	1.5%	3.7%	6.3%	3.4%	14.4%	3.4%	15,487
2006	36.4%	17.0%	8.3%	1.9%	1.7%	3.7%	6.9%	3.1%	16.3%	4.6%	14,338
2007	38.1%	16.3%	7.7%	1.6%	1.5%	3.5%	6.7%	3.2%	15.8%	5.7%	13,882
2008	n/a	n/a	n/a	n/a	n/a	n/a	n/a	n/a	n/a	n/a	n/a

Notes:

1. Numeric values of plus and minus grades are included in the calculation of Average Course Grades.
2. Beginning Summer 1995, a slightly different methodology was used. Percentage differences are negligible. The line in the table above marks the change in methodology.
3. Beginning Summer 2005, some of the trends in grade distributions are due to business processes in the new Student Information System.

The graph below shows the average course grade for each term and summer session since 1983. The average course grades for second summer session are the highest among the two terms and summer sessions. While all terms and sessions have course grades that average above a 'B', the average course grade for second summer session is greater than a 'B+'.

FIGURE 9: AVERAGE GPA COURSE GRADES



PEER INSTITUTIONS

BIG TEN AND STATE SCHOOLS

Many of the Big Ten universities report summer enrollment at the end of the session; therefore, many of the summer figures for this year are not available at this time. The University of Illinois formerly had an intersession, which is now considered Summer I (a four week session). Data for Summer I are shown from 1995 until 2005, when Illinois began consolidating their summer total. In 1995, the University of Michigan started reporting the spring-summer term separately; previously, this term was included in the summer enrollment figures. Additionally, Michigan is no longer counting graduate professional students with the summer session enrollment, but rather with their spring-summer full term counts. In 1992, to accommodate the change from terms to semesters, Michigan State offered a summer session of only five weeks compared to the usual ten weeks. Starting with the fall of 1999, Minnesota went from a quarter system to a semester system and the way data was reported changed with the new student information system in 2001. In 1992, Purdue University changed from one four-week session and one eight-week session to three four-week modules. Available preliminary 2008 enrollment figures are below.

TABLE 48: ENROLLMENT AT BIG TEN INSTITUTIONS (MAIN CAMPUSES)
SUMMER 2007

Big Ten Institutions	1993	1994	1995	1996	1997	1998	1999	2000	2001	2002	2003	2004	2005	2006	2007	2008	Change from 2007		
																	Number	Percent	
Indiana University																			
First Summer Session	8,402	8,702	8,727	9,042	9,019	8,830	8,751	8,520	9,059	9,091	9,031	8,659	8,389	8,249	8,645	8,710	+ 65	+ 0.8%	
Second Summer Session	8,940	8,971	8,734	8,943	8,632	8,309	7,887	7,786	7,984	8,418	8,317	7,982	7,581	7,428	7,107	7,315	+ 208	+ 2.9%	
University of Illinois																			
Summer Session I			1,379	1,155	1,565	1,545	1,691	1,546	1,869	2,067	1,935	2,029							
Summer Session II	9,165	9,276	9,458	9,247	8,891	8,517	8,422	8,222	8,476	8,833	9,057	8,879	9,834	9,992	10,624	10,669	+ 45	+ 0.4%	
University of Iowa																			
Summer Session	10,698	10,666	10,567	10,651	11,220	11,398	11,773	11,234	11,371	11,222	11,918	11,429	11,448	11,191	11,358	10,956	- 402	- 3.5%	
University of Michigan																			
Summer Term	7,152	6,634	4,090	4,035	4,017	3,768	3,728	3,003	3,056	3,070	3,009	2,843	3,109	3,089	3,342	3,152	- 190	- 5.7%	
Michigan State University																			
Summer Session	14,742	15,588	16,387	16,942	17,973	18,333	18,489	18,713	18,913	19,994	20,386	19,652	19,856	20,178	n/a	n/a	---	---	
University of Minnesota																			
Summer Session I	12,883	12,360	12,891	12,350	11,953	11,907	12,584		16,277	18,186	18,427	18,388	17,953	17,130	16,531	n/a	n/a	---	---
Summer Session II	6,679	7,281	7,294	5,845	5,857	6,696	6,380												
Northwestern University																			
Summer Session	4,328	4,595	4,652	4,797	5,029	5,367	5,133	5,011	5,167	5,506	5,980	6,128	6,232	6,487	n/a	n/a	---	---	
Ohio State University																			
Summer Quarter	19,760	19,213	19,547	19,371	19,530	19,520	19,378	19,386	19,325	19,669	19,759	19,333	18,701	18,391	18,350	20,855	+ 2505	+ 13.7%	
Penn State University																			
Summer Session	11,662	11,647	12,108	12,453	12,391	12,080	11,762	12,096	12,080	12,183	12,060	11,487	11,218	11,624	n/a	n/a	---	---	
Purdue University																			
Summer Session	9,851	9,941	9,888	10,018	10,202	10,379	10,708	12,241	11,614	11,963	12,198	11,901	11,518	11,643	11,801	11,855	+ 54	+ 0.5%	
University of Wisconsin																			
Summer Session	14,536	14,224	13,295	12,764	12,748	12,680	11,429	12,796	12,701	13,032	13,745	13,560	13,144	12,744	12,823	n/a	---	---	

Notes:

1. Beginning in 2005, enrollment figures for Northwestern include Evanston and Chicago campuses.
2. "n/a" indicates enrollment figures that are not yet available.

TABLE 49: ENROLLMENT AT STATE SCHOOLS
SUMMER 2007

State Schools	1993	1994	1995	1996	1997	1998	1999	2000	2001	2002	2003	2004	2005	2006	2007	2008	Change from 2007	
																	Number	Percent
Ivy Tech State College																		
Bloomington Campus	816	786	766	1,120	1,046	982	984	1,031	1,208	1,148	1,370	1,236	1,532	1,943	2,155	2,426	+ 271	+ 12.6%
System-wide	16,194	15,512	15,652	16,575	17,108	16,748	17,388	18,784	22,871	25,900	27,379	29,096	28,807	29,449	30,197	32,728	+ 2531	+ 8.4%
Ball State University																		
Summer Sessions	8,239	8,243	7,621	7,548	7,407	7,370	7,458	7,529	7,774	7,939	8,036	8,114	8,127	7,937	7,558		---	---
Indiana State University																		
Summer Session I	3,943	3,708	3,577	3,691	3,380	3,735	3,855	3,835	3,943	3,767	3,589	3,728	3,663	3,654	3,715	3,315	-400	- 10.8%
Summer Session II	3,041	2,802	2,734	2,524	2,614	2,316	2,272	2,397	2,241	2,392	2,211	2,297	2,212	2,028	2,091	2,137	+46	+ 2.2%

Note: Ball State University changed reporting in 1993 to unduplicated headcount for all summer sessions and summer semester.

DEGREES CONFERRED

The table below shows the number of degrees and certificates awarded at Indiana University-Bloomington from 1979-80 to 2007-08. This year, there is a 5.1% decrease in the number of degrees awarded from last year. The decreases in associates, baccalaureates and masters degrees outweigh the increases in the number of certificates and doctorates awarded. The number of professional degrees awarded is the same as last year.

TABLE 50: DEGREES AWARDED BY DEGREE LEVEL
JUNE 1979 THROUGH 2007-08

Degree Years	Certificate	Associate	Baccalaureate	Masters	Doctoral	Professional	Total
1979-80	103	41	4,369	1,886	542	260	7,201
1980-81	70	36	4,296	1,825	515	237	6,979
1981-82	85	44	4,320	1,858	541	248	7,096
1982-83	70	58	4,487	1,747	504	236	7,102
1983-84	76	45	4,266	1,773	467	270	6,897
1984-85	71	58	4,514	1,664	470	243	7,020
1985-86	98	52	4,629	1,707	399	224	7,109
1986-87	93	70	4,538	1,722	416	236	7,075
1987-88	125	62	4,688	1,664	356	251	7,146
1988-89	199	60	4,611	1,639	345	264	7,118
1989-90	181	59	4,881	1,762	361	254	7,498
1990-91	280	51	5,122	1,661	376	269	7,759
1991-92	246	64	5,431	1,655	435	264	8,095
1992-93	290	58	5,534	1,643	370	270	8,165
1993-94	298	67	5,205	1,578	380	261	7,789
1994-95	277	62	5,073	1,810	398	265	7,885
1995-96	301	66	5,026	1,757	395	253	7,798
1996-97	248	88	5,024	1,825	376	283	7,844
1997-98	273	85	5,212	1,742	378	282	7,972
1998-99	236	76	5,087	1,635	383	288	7,705
1999-00	286	72	5,188	1,641	422	258	7,867
2000-01	308	62	5,190	1,572	414	284	7,830
2001-02	397	62	5,692	1,604	364	265	8,384
2002-03	418	81	5,989	1,636	395	292	8,811
2003-04	397	78	6,178	1,652	397	272	8,974
2004-05	244	55	6,176	1,766	429	286	8,956
2005-06	349	64	6,292	1,788	429	278	9,200
2006-07	298	59	6,319	1,805	403	281	9,165
2007-08	298	45	5,915	1,719	440	281	8,698

Notes:

1. A degree year is defined as July 1 - June 30 beginning in 1982-83. Prior to 1982-83 a degree year was defined as June 1 - May 30.
2. The certificate level includes undergraduate and graduate studies and area certificates; the baccalaureate level includes all artist diploma graduates; and the doctoral level includes Specialist/Director graduates.
3. Shaded areas indicate record highs since 1979-80.

The following table lists the number of degrees awarded by month from 1979-80 to the present. For each month, the number of degrees awarded shows a decrease. The number of degrees awarded in May (5,090) decreased from the record-high figure reported last year (5,516).

TABLE 51: ANNUAL DEGREES CONFERRED
1979-80 THROUGH 2005-06
JULY - JUNE

Degree Years	August	December	May	Other	July-June Annual Total
1979-80	1,868	1,362	3,478	494	7,201
1980-81	1,627	1,348	3,483	521	6,979
1981-82	1,765	1,375	3,453	503	7,096
1982-83	1,694	1,339	3,370	699	7,102
1983-84	1,281	1,419	3,454	743	6,897
1984-85	1,260	1,386	3,594	780	7,020
1985-86	1,327	1,411	3,640	731	7,109
1986-87	1,383	1,387	3,557	748	7,075
1987-88	1,274	1,362	3,775	735	7,146
1988-89	1,330	1,346	3,745	697	7,118
1989-90	1,404	1,434	3,839	821	7,498
1990-91	1,320	1,508	4,247	684	7,759
1991-92	1,387	1,665	4,269	774	8,095
1992-93	1,312	1,636	4,510	707	8,165
1993-94	1,304	1,558	4,165	762	7,789
1994-95	1,280	1,549	4,199	857	7,885
1995-96	1,199	1,544	4,262	793	7,798
1996-97	1,138	1,584	4,205	917	7,844
1997-98	1,281	1,633	4,248	810	7,972
1998-99	1,063	1,599	4,273	770	7,705
1999-00	1,072	1,541	4,357	897	7,867
2000-01	1,090	1,558	4,367	815	7,830
2001-02	1,194	1,531	4,952	707	8,384
2002-03	1,182	1,789	5,134	707	8,811
2003-04	1,181	1,653	5,422	718	8,974
2004-05	1,299	1,599	5,227	831	8,956
2005-06	1,349	1,665	5,444	742	9,200
2006-07	1,285	1,597	5,516	767	9,165
2007-08	1,282	1,593	5,090	733	8,698

Notes: Shaded areas indicate record highs since 1979-80.