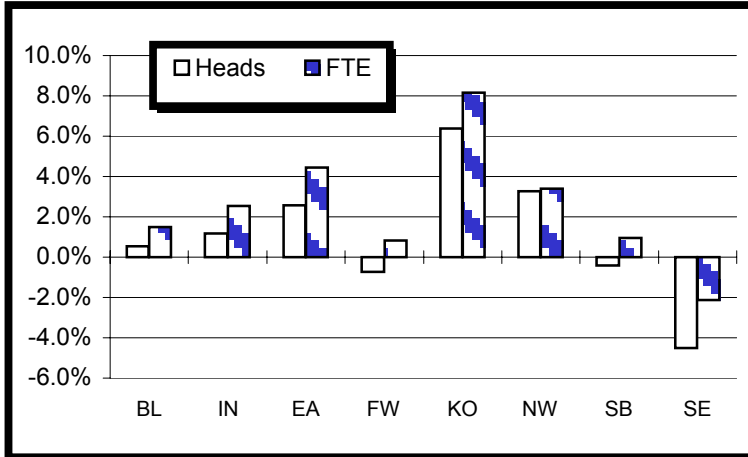


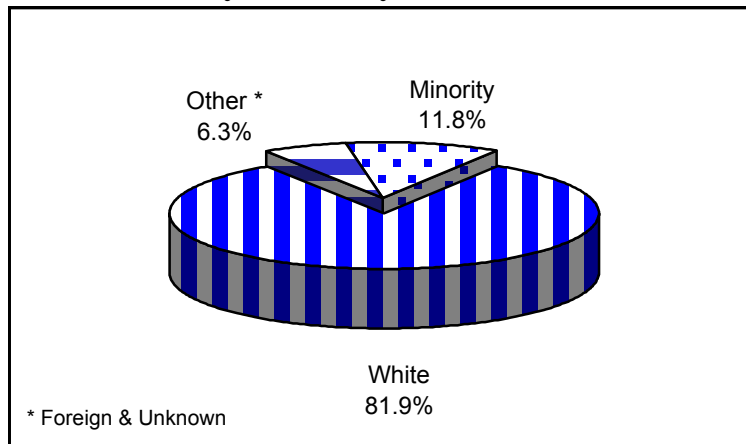


Second Semester, 2003-04  
Vol. 13, No. 2

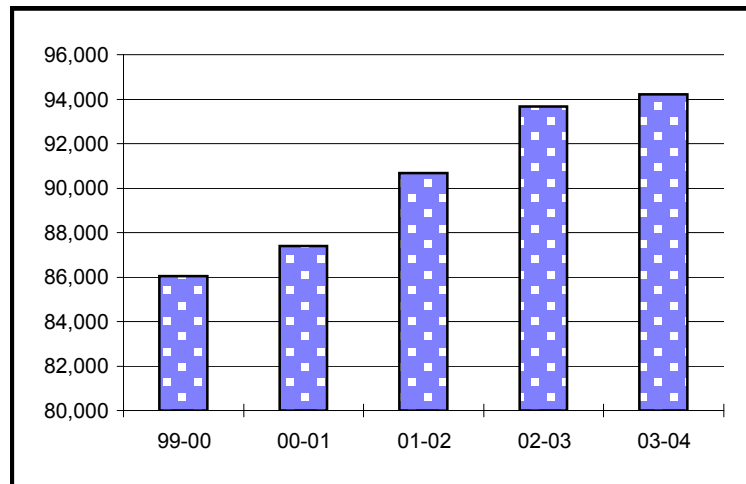
### Enrollment Percent Change



### Enrollment By Ethnicity



### Historical Second Semester Enrollment



### University Enrollment Summary

	#	%-Change (a)
Headcount	94,212	0.6%
Credit Hours	1,054,232.0	1.7%
FTE	72,199.9	1.8%
<b>Students By Class (b)</b>		
Freshman	17,527	-8.0%
Sophomore	19,300	2.2%
Junior	13,808	2.9%
Senior	21,169	5.6%
<b>Students By Level</b>		
Undergraduate	71,804	0.5%
Graduate	13,421	5.8%
Professional	3,288	1.5%
Sp. Undergrad.	2,326	-14.7%
Sp. Graduate	3,373	-6.2%
<b>Sex</b>		
Male	39,638	0.8%
Female	54,574	0.4%
<b>Ethnicity</b>		
Amer. Indian	283	17.4%
Asian	2,287	3.1%
Black	6,280	0.4%
Hispanic	2,240	4.2%
White	77,131	-0.1%
Foreign	4,895	5.2%
Unknown	1,096	13.3%
<b>Undergraduates By FT/PT (b)</b>		
FT-UG	52,330	2.2%
PT-UG	19,474	-3.7%
<b>Residency</b>		
Resident	74,942	0.0%
Non-Resident	19,270	2.8%

(a) Compared with Second Semester, 2002-03

(b) Degree-seeking only

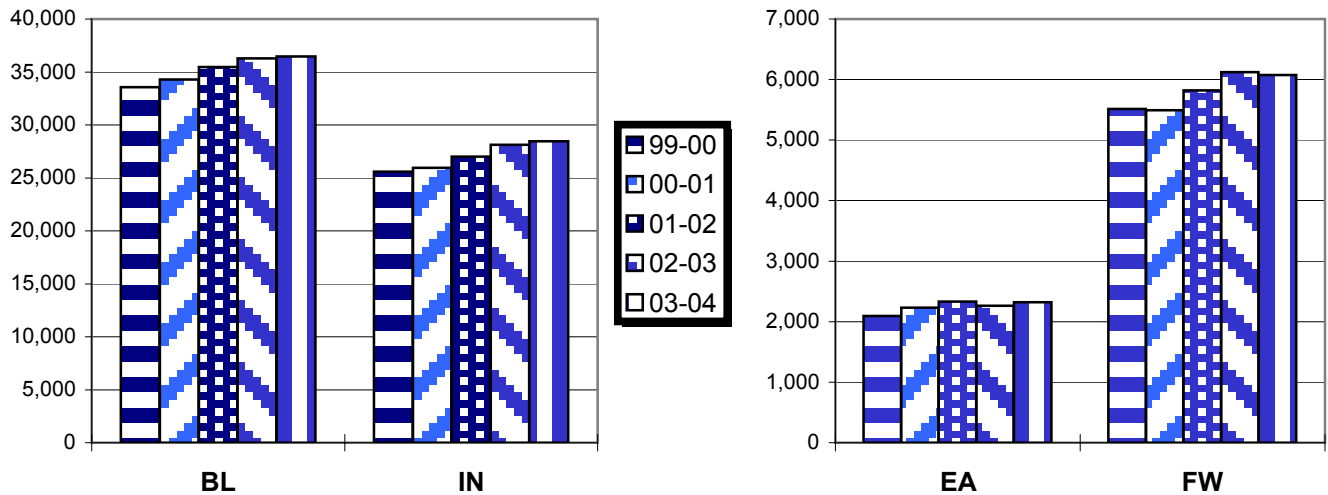
# Campus Enrollment Summary

## By Headcount, Credit Hours, and FTE

	Headcount		Credit Hours		FTE	
	#	% Change	#	% Change	#	% Change
<b>BL</b>	36,473	0.5%	482,658.5	1.4%	33,194.5	1.5%
<b>IN<sup>1</sup></b>	28,453	1.2%	297,169.0	2.5%	20,400.9	2.5%
<b>EA</b>	2,323	2.6%	22,402.0	4.4%	1,497.5	4.5%
<b>FW</b>	6,076	-0.7%	59,092.0	0.8%	3,991.5	0.8%
<b>KO</b>	2,740	6.4%	25,934.0	8.2%	1,747.9	8.2%
<b>NW</b>	5,091	3.3%	46,199.0	3.1%	3,142.8	3.4%
<b>SB</b>	7,018	-0.4%	64,151.0	1.2%	4,387.7	1.0%
<b>SE</b>	6,038	-4.5%	56,626.5	-2.1%	3,837.0	-2.1%

<sup>1</sup> IUPUI enrollments are unduplicated as of First Semester, 2000-01

## Historical Second Semester Enrollment



## By Undergraduate Enrollment Status

	Full-Time UG		Part-Time UG	
	#	% Change	#	% Change
<b>BL</b>	26,291	1.0%	1,754	-8.3%
<b>IN<sup>1</sup></b>	12,240	3.9%	7,556	-4.8%
<b>EA</b>	1,175	6.1%	920	-5.3%
<b>FW</b>	3,123	0.9%	2,184	-3.1%
<b>KO</b>	1,272	9.7%	1,031	-0.9%
<b>NW</b>	2,220	4.4%	1,647	2.0%
<b>SB</b>	3,114	2.4%	2,315	0.3%
<b>SE</b>	2,895	1.0%	2,067	-4.9%

FW - IU Students Only

## By Residency

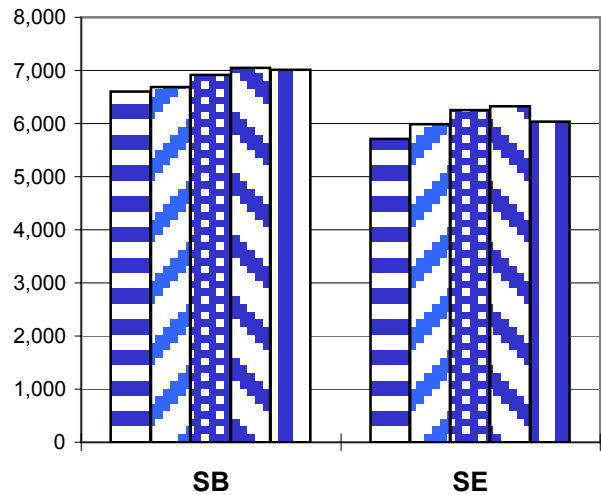
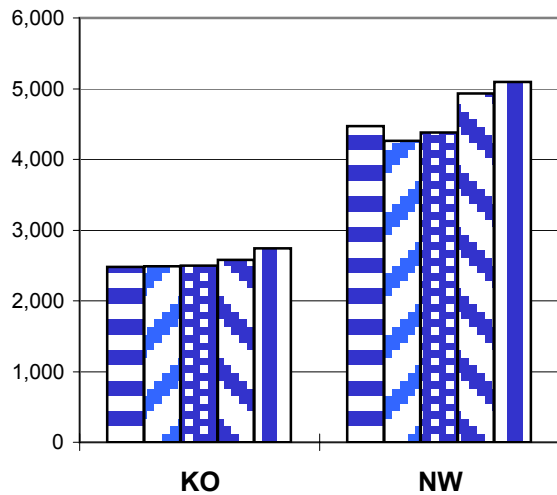
	Resident		Non-Resident	
	#	% Change	#	% Change
<b>BL</b>	21,707	-1.3%	14,766	3.3%
<b>IN</b>	26,312	0.9%	2,141	5.1%
<b>EA</b>	2,100	0.8%	223	23.2%
<b>FW</b>	5,793	-0.5%	283	-4.4%
<b>KO</b>	2,722	6.7%	18	-30.8%
<b>NW</b>	5,042	3.6%	49	-24.6%
<b>SB</b>	6,642	0.4%	376	-13.2%
<b>SE</b>	4,624	-6.0%	1,414	0.5%

# Campus Enrollment Summary

## By Undergraduate Class Standing

	Freshman		Sophomore		Junior		Senior	
	#	% Change	#	% Change	#	% Change	#	% Change
BL	5,827	-9.1%	6,759	2.8%	6,336	3.1%	9,123	3.7%
IN	4,567	-6.7%	5,664	-0.5%	3,497	0.7%	6,068	7.2%
EA	789	-4.8%	604	2.9%	252	-1.2%	450	10.6%
FW	1,564	-22.2%	1,473	8.5%	846	8.5%	1,424	18.4%
KO	747	5.2%	795	4.5%	306	-1.0%	455	8.3%
NW	1,261	0.7%	1,299	10.3%	523	1.8%	784	-1.5%
SB	1,470	-5.0%	1,482	-1.2%	1,013	11.4%	1,464	4.9%
SE	1,302	-6.3%	1,224	-1.1%	1,035	-0.4%	1,401	2.1%

## Historical Second Semester Enrollment



## Graduate and Professional Enrollment

	Graduate		Professional	
	#	% Change	#	% Change
BL	6,553	4.1%	910	0.2%
IN	4,215	14.7%	2,378	2.0%
EA	0	-100.0%		
FW	536	-0.9%		
KO	110	-3.5%		
NW	397	9.7%		
SB	946	-4.5%		
SE	664	-6.5%		

## By Sex

	Male		Female	
	#	% Change	#	% Change
BL	17,481	1.1%	18,992	0.0%
IN	11,982	1.1%	16,471	1.3%
EA	693	2.7%	1,630	2.5%
FW	2,364	2.2%	3,712	-2.5%
KO	792	4.5%	1,948	7.2%
NW	1,541	1.3%	3,550	4.1%
SB	2,518	-0.8%	4,500	-0.2%
SE	2,267	-3.7%	3,771	-5.0%

FW - IU Students Only

# Campus Enrollment Summary

## By Ethnicity

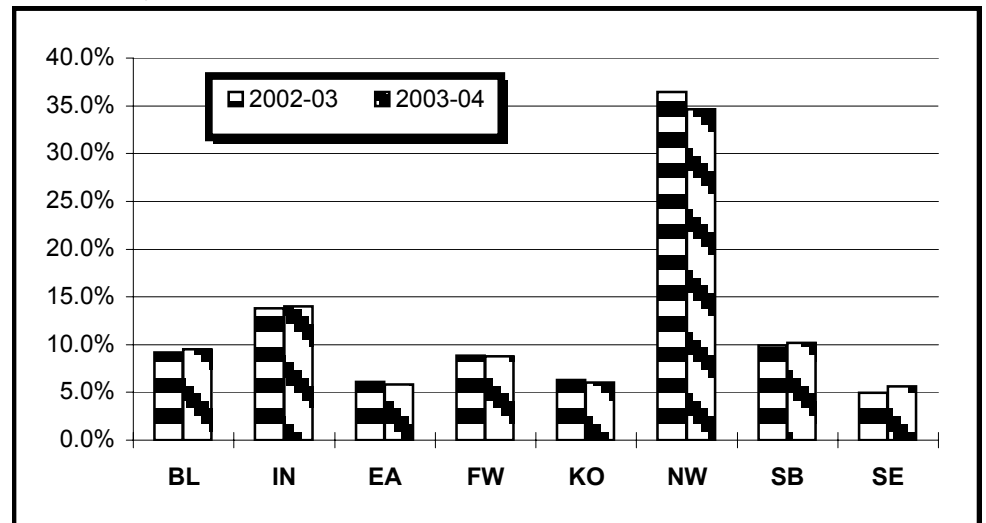
	American Indian			Asian-American			African-American			Hispanic			Other		
	#	% Change	% of Campus Total	#	% Change	% of Campus Total	#	% Change	% of Campus Total	#	% Change	% of Campus Total	#	% Change	% of Campus Total
BL	83	25.8%	0.2%	1,186	4.1%	3.3%	1,398	3.0%	3.8%	794	2.5%	2.2%	33,012	0.2%	90.5%
IN	91	21.3%	0.3%	788	1.0%	2.8%	2,592	1.8%	9.1%	507	6.7%	1.8%	24,475	1.0%	86.0%
EA	11	-8.3%	0.5%	8	-38.5%	0.3%	100	4.2%	4.3%	16	-5.9%	0.7%	2,188	2.9%	94.2%
FW	18	12.5%	0.3%	83	12.2%	1.4%	292	-5.5%	4.8%	140	-0.7%	2.3%	5,543	-0.7%	91.2%
KO	9	28.6%	0.3%	26	0.0%	0.9%	102	14.6%	3.7%	28	-30.0%	1.0%	2,575	6.7%	94.0%
NW	22	29.4%	0.4%	65	25.0%	1.3%	1,138	-8.2%	22.4%	539	10.2%	10.6%	3,327	6.2%	65.4%
SB	33	-2.9%	0.5%	87	-3.3%	1.2%	420	4.0%	6.0%	174	1.2%	2.5%	6,304	-0.7%	89.8%
SE	16	14.3%	0.3%	44	0.0%	0.7%	238	11.2%	3.9%	42	5.0%	0.7%	5,698	-5.2%	94.4%

## Matriculants By Campus

	Heads		Hours	
	#	% Change	#	% Change
BL	556	-11.5%	5,720.5	-10.2%
IN	1,771	-12.1%	15,819.5	-7.9%
EA	265	7.7%	2,121.0	6.7%
FW	566	-8.3%	4,981.0	-11.7%
KO	257	-5.2%	1,697.0	-18.6%
NW	507	-13.9%	3,983.0	-16.1%
SB	595	4.6%	4,894.0	5.4%
SE	415	-14.6%	3,573.0	-4.5%

FW - IU Students Only

## Minority\* Enrollment as Percent of Total



\* Am. Indian, Asian-Amer., African-Amer., & Hispanic

## Source Information

Todd Schmitz, Dir., Reporting & Research  
 Lisa Newlin-Blackwell, Reporting Analyst  
 Poplars 018 : (812) 855-9893

<http://www.indiana.edu/~urr/>

Produced: 1/22/04