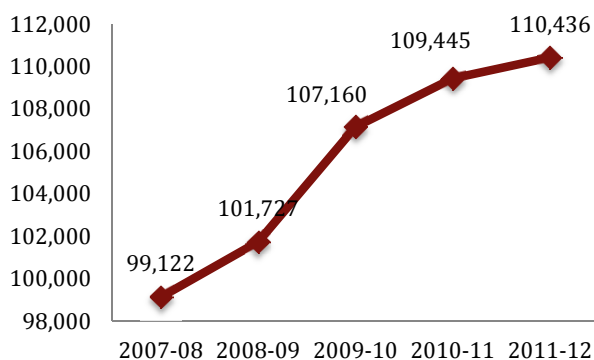
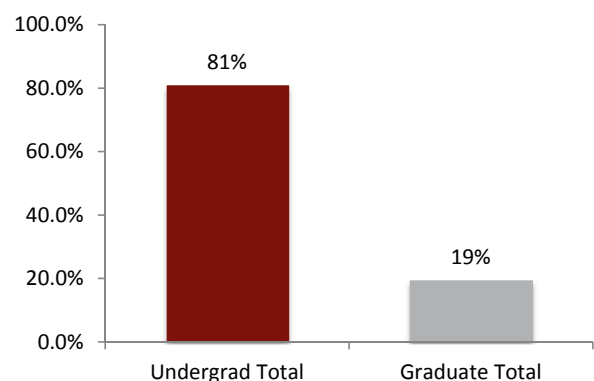
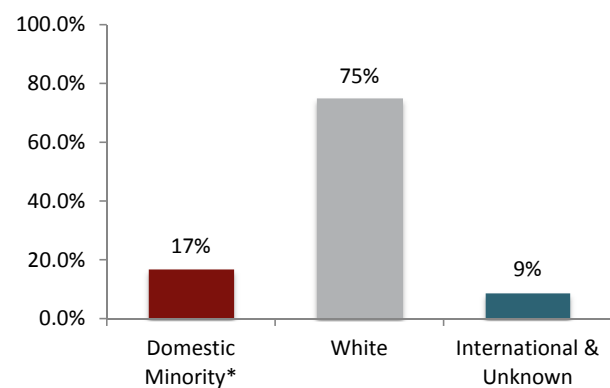


**IU Historical Enrollment
First Semester**

IU Enrollment By Level

IU Enrollment By Ethnicity & Race


* Includes Hispanic/Latino, African American, American Indian/Alaska Native, Asian American, Native Hawaiian/Pacific Islander and Two or More Races

University Enrollment Summary

	Count	% of total	% change ¹
Headcount	110,436		0.9%
Credit Hours	1,282,090.8		0.4%
FTE	87,688.4		0.3%

Students By Level and Class

Undergrad Total	89,176	80.7%	1.3%
Degree-seeking	81,879	74.1%	0.0%
Non-Degree	7,297	6.6%	18.2%
Graduate Total	21,260	19.3%	-0.6%
Grad Degree-seeking	11,751	10.6%	0.2%
Doctoral-Research	4,336	3.9%	1.8%
Doctoral-Practice	3,806	3.4%	2.1%
Non-Degree	1,367	1.2%	-18.0%
Freshman	21,634	26.4%	-2.9%
Sophomore	19,195	23.4%	-1.2%
Junior	17,052	20.8%	-0.7%
Senior	23,998	29.3%	4.3%

Undergraduates By Courseload²

FT-UG	66,633	81.4%	-0.2%
PT-UG	15,246	18.6%	0.9%

Sex

Male	48,671	44.1%	0.8%
Female	61,765	55.9%	1.0%

Ethnicity & Race

Hispanic/Latino	4,725	4.3%	8.9%
African American	7,922	7.2%	-0.4%
Am. Ind./Alaska Nat.	232	0.2%	-16.2%
Asian American	3,429	3.1%	0.6%
Nat. Haw./Pac. Islnd.	71	0.1%	0.0%
White	82,435	74.6%	-0.1%
International	7,306	6.6%	11.3%
Unknown	2,327	2.1%	-17.6%
Two or More Races	1,989	1.8%	36.5%

Residency

Resident	84,813	76.8%	0.7%
Non-Resident	25,623	23.2%	1.4%
Reciprocity ³	2,646	10.3%	3.1%

¹ Compared with First Semester, 2010-11

² Degree-seeking only

³ Portion of non-resident enrollments that are reciprocity

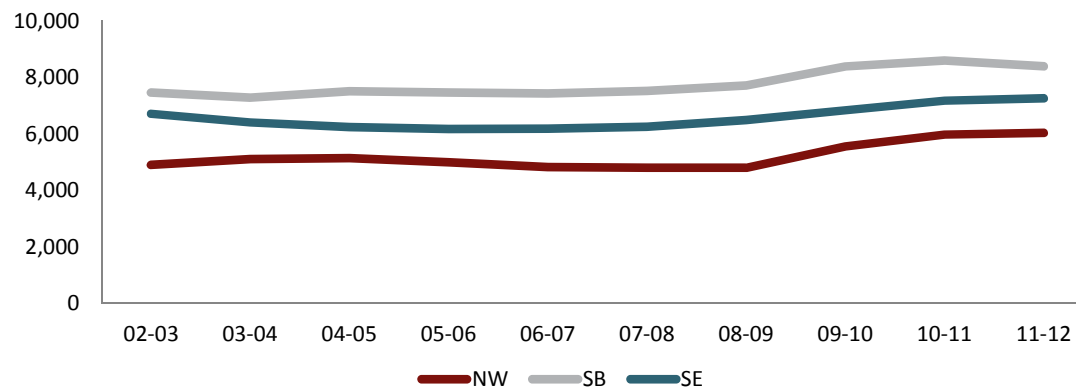
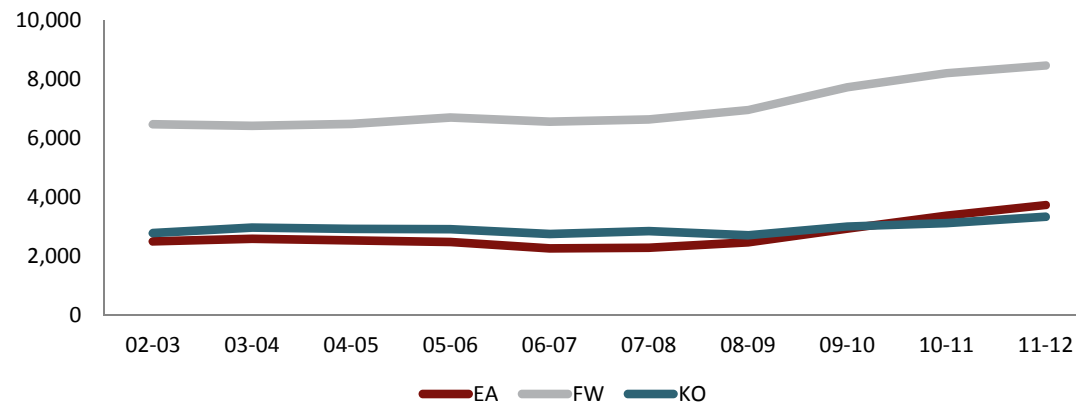
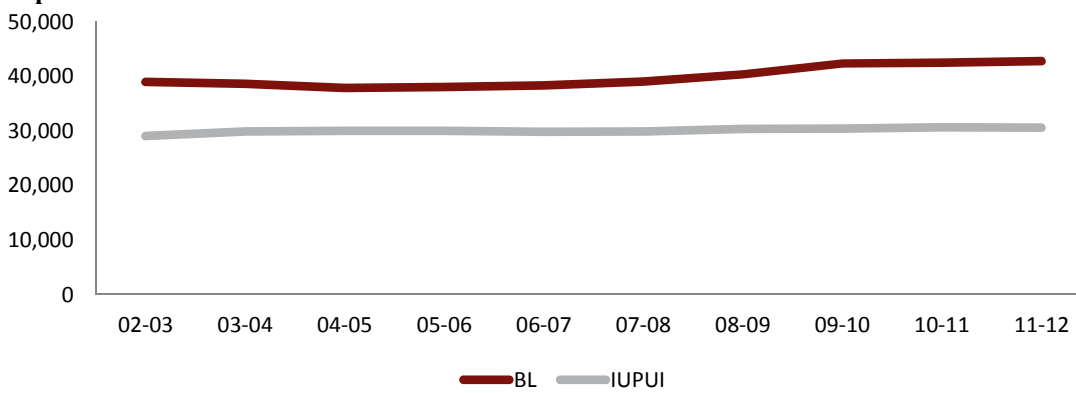
Campus Enrollment Summary

	Headcount			Credit Hours			FTE		
	Count	%	%	Count	%	%	Count	%	%
		of total	change ¹		of total	change ¹		of total	change ¹
Bloomington	42,731	38.7%	0.6%	570,177.5	44.5%	0.5%	39,317.3	44.8%	0.5%
IUPUI	30,530	27.6%	-0.1%	345,928.3	27.0%	0.2%	23,707.1	27.0%	0.2%
East	3,725	3.4%	10.7%	36,590.5	2.9%	9.5%	2,447.4	2.8%	9.5%
Fort Wayne*	8,456	7.7%	3.1%	81,175.0	6.3%	-1.5%	5,458.5	6.2%	-1.5%
Kokomo	3,318	3.0%	6.7%	32,394.0	2.5%	6.2%	2,173.9	2.5%	6.2%
Northwest	6,035	5.5%	1.1%	61,565.0	4.8%	-0.5%	4,169.5	4.8%	-0.6%
South Bend	8,385	7.6%	-2.4%	80,420.0	6.3%	-3.5%	5,427.8	6.2%	-3.7%
Southeast	7,256	6.6%	1.1%	73,840.5	5.8%	0.7%	4,987.1	5.7%	0.8%

¹ Compared with First Semester, 2010-11

* IU students only

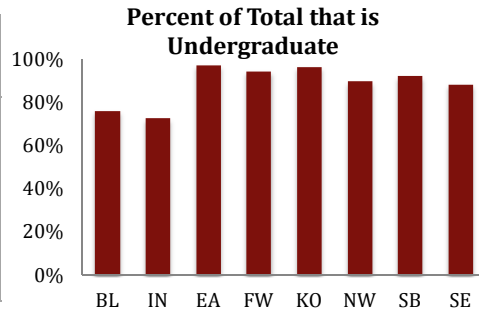
Campus Historical First Semester Enrollment



Campus Enrollment Summary

Level of Enrollment (including non-degree)

	Undergraduate			Graduate		
	Count	% of campus		Count	% of campus	
		total	% change ¹		total	% change ¹
Bloomington	32,543	76.2%	0.5%	10,188	23.8%	0.9%
IUPUI	22,236	72.8%	0.0%	8,294	27.2%	-0.3%
East	3,623	97.3%	10.3%	102	2.7%	27.5%
Fort Wayne*	7,989	94.5%	3.6%	467	5.5%	-5.3%
Kokomo	3,204	96.6%	7.6%	114	3.4%	-13.0%
Northwest	5,421	89.8%	2.1%	614	10.2%	-7.3%
South Bend	7,737	92.3%	-0.7%	648	7.7%	-19.0%
Southeast	6,423	88.5%	0.6%	833	11.5%	4.9%

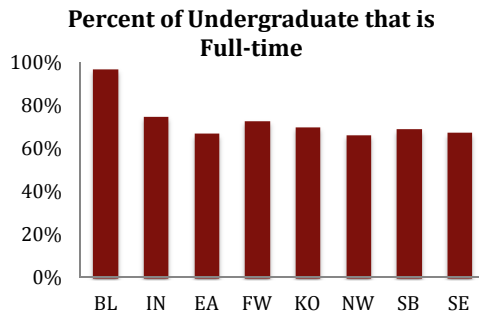


Undergraduates by Class[†]

	Freshman			Sophomore			Junior			Senior		
	Count	% of campus		Count	% of campus		Count	% of campus		Count	% of campus	
		total	% change ¹		total	% change ¹		total	% change ¹		total	% change ¹
Bloomington	7,779	24.3%	3.1%	7,711	24.1%	-2.6%	7,354	23.0%	-3.6%	9,197	28.7%	4.5%
IUPUI	4,741	22.3%	0.4%	4,751	22.4%	-1.9%	4,415	20.8%	-0.2%	7,328	34.5%	1.6%
East	720	25.6%	-2.3%	612	21.8%	5.7%	627	22.3%	8.7%	854	30.4%	16.2%
Fort Wayne*	2,150	25.4%	-10.9%	1,414	16.7%	1.4%	907	10.7%	-6.3%	1,603	19.0%	6.7%
Kokomo	778	23.4%	4.0%	583	17.6%	1.9%	499	15.0%	6.2%	641	19.3%	-0.3%
Northwest	1,825	30.2%	-6.6%	1,302	21.6%	5.2%	843	14.0%	14.7%	990	16.4%	-3.3%
South Bend	1,849	22.1%	-17.1%	1,456	17.4%	-3.5%	1,133	13.5%	0.4%	1,751	20.9%	10.7%
Southeast	1,792	24.7%	-6.7%	1,366	18.8%	-0.9%	1,274	17.6%	2.2%	1,634	22.5%	7.8%

Undergraduate Enrollment Status[†]

	Full-time Undergrad			Part-time Undergrad		
	Count	% of campus		Count	% of campus	
		total	% change ¹		total	% change ¹
Bloomington	31,010	96.8%	0.4%	1,031	3.2%	2.7%
IUPUI	15,905	74.9%	0.4%	5,330	25.1%	-0.5%
East	1,885	67.0%	9.8%	928	33.0%	1.8%
Fort Wayne*	4,430	72.9%	-5.0%	1,644	27.1%	1.8%
Kokomo	1,750	70.0%	2.7%	751	30.0%	3.0%
Northwest	3,288	66.3%	-3.2%	1,672	33.7%	7.5%
South Bend	4,274	69.1%	-4.1%	1,915	30.9%	-3.8%
Southeast	4,091	67.4%	-0.5%	1,975	32.6%	1.2%



¹ Compared with First Semester, 2010-11

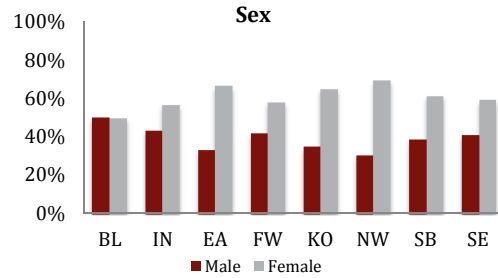
* IU students only

† Degree-seeking only

Campus Enrollment Summary

Sex

	Male			Female		
	Count	% of campus		Count	% of campus	
		total	change ¹		total	change ¹
Bloomington	21,397	50.1%	0.1%	21,334	49.9%	1.1%
IUPUI	13,231	43.3%	0.7%	17,299	56.7%	-0.8%
East	1,247	33.5%	10.5%	2,478	66.5%	10.8%
Fort Wayne*	3,562	42.1%	4.8%	4,894	57.9%	1.9%
Kokomo	1,160	35.0%	7.2%	2,158	65.0%	6.5%
Northwest	1,854	30.7%	-2.1%	4,181	69.3%	2.6%
South Bend	3,256	38.8%	-4.6%	5,129	61.2%	-0.9%
Southeast	2,964	40.8%	4.0%	4,292	59.2%	-0.8%



Ethnicity & Race - Domestic Minority

	Hispanic/Latino			African American		
	Count	% of campus		Count	% of campus	
		total	change ¹		total	change ¹
Bloomington	1,565	3.7%	10.5%	1,776	4.2%	-4.1%
IUPUI	1,129	3.7%	13.1%	2,871	9.4%	2.3%
East	61	1.6%	17.3%	122	3.3%	2.5%
Fort Wayne*	386	4.6%	22.9%	586	6.9%	-0.3%
Kokomo	99	3.0%	10.0%	142	4.3%	-10.7%
Northwest	859	14.2%	2.3%	1,404	23.3%	1.9%
South Bend	471	5.6%	-1.3%	569	6.8%	-6.1%
Southeast	155	2.1%	2.0%	452	6.2%	1.8%

Ethnicity & Race - Other

	White		
	Count	% of campus	
		total	change ¹
Bloomington	30,816	72.1%	-1.8%
IUPUI	22,407	73.4%	-0.7%
East	3,367	90.4%	11.1%
Fort Wayne*	6,890	81.5%	1.9%
Kokomo	2,747	82.8%	4.9%
Northwest	3,374	55.9%	0.9%
South Bend	6,609	78.8%	-1.8%
Southeast	6,225	85.8%	1.6%

	American Indian/Alaska Native			Asian American		
	Count	% of campus		Count	% of campus	
		total	change ¹		total	change ¹
Bloomington	72	0.2%	-25.8%	1,755	4.1%	2.2%
IUPUI	58	0.2%	-13.4%	1,133	3.7%	-2.2%
East	8	0.2%	60.0%	23	0.6%	4.5%
Fort Wayne*	29	0.3%	-6.5%	135	1.6%	3.8%
Kokomo	9	0.3%	-10.0%	43	1.3%	4.9%
Northwest	15	0.2%	-11.8%	112	1.9%	-5.9%
South Bend	20	0.2%	-23.1%	129	1.5%	10.3%
Southeast	21	0.3%	-12.5%	99	1.4%	-3.9%

	International		
	Count	% of campus	
		total	change ¹
Bloomington	5,495	12.9%	13.9%
IUPUI	1,446	4.7%	6.1%
East	9	0.2%	-25.0%
Fort Wayne*	104	1.2%	19.5%
Kokomo	4	0.1%	33.3%
Northwest	9	0.1%	-10.0%
South Bend	207	2.5%	-11.2%
Southeast	32	0.4%	-3.0%

	Native Hawaiian/Pacific Islander			Two or More Races		
	Count	% of campus		Count	% of campus	
		total	change ¹		total	change ¹
Bloomington	30	0.1%	15.4%	773	1.8%	28.0%
IUPUI	17	0.1%	-10.5%	621	2.0%	54.5%
East	4	0.1%	-33.3%	52	1.4%	79.3%
Fort Wayne*	1	0.0%	-50.0%	174	2.1%	22.5%
Kokomo	2	0.1%	100.0%	45	1.4%	125.0%
Northwest	5	0.1%	0.0%	78	1.3%	50.0%
South Bend	5	0.1%	25.0%	126	1.5%	22.3%
Southeast	7	0.1%	-12.5%	120	1.7%	14.3%

	Unknown		
	Count	% of campus	
		total	change ¹
Bloomington	449	1.1%	-19.1%
IUPUI	848	2.8%	-28.6%
East	79	2.1%	-11.2%
Fort Wayne*	151	1.8%	3.4%
Kokomo	227	6.8%	36.7%
Northwest	179	3.0%	-12.3%
South Bend	249	3.0%	-15.6%
Southeast	145	2.0%	-20.8%

Residency

	Resident			Non-Resident		
	Count	% of campus		Count	% of campus	
		total	change ¹		total	change ¹
Bloomington	23,636	55.3%	0.9%	19,095	44.7%	0.3%
IUPUI	27,881	91.3%	-0.7%	2,649	8.7%	5.9%
East	3,032	81.4%	7.4%	693	18.6%	27.6%
Fort Wayne*	8,151	96.4%	3.1%	305	3.6%	2.0%
Kokomo	3,284	99.0%	6.5%	34	1.0%	30.8%
Northwest	5,947	98.5%	0.9%	88	1.5%	14.3%
South Bend	7,884	94.0%	-2.3%	501	6.0%	-3.5%
Southeast	4,998	68.9%	1.7%	2,258	31.1%	-0.2%

¹ Compared with First Semester, 2010-11

* IU students only