

The Edge

Volume 3, Issue 4

Summer 2009



David S. Wilkes named Executive Associate Dean of Research Affairs



Indiana University School of Medicine (IUSM) has named David S. Wilkes, MD, executive associate dean of research affairs. Dr. Wilkes' research and clinical experience and commitment to translational science will serve the school and its mission well.

Dr. Wilkes succeeds Ora Hirsch Pescovitz, MD, who served as EAD for nine years, in addition to her role at Riley Hospital for Children as president and chief executive officer.

Dr. Wilkes is the Dr. Calvin H. English Professor of Medicine in the Division of Pulmonary and Critical Care Medicine. He is also a professor of biochemistry and molecular biology and microbiology and immunology.

To read the full press release [click here](#).

According to Dr. Wilkes in the April 24th IUSM press release, "With the complexity of medical research and patient care today, success requires that the boundaries of research and clinical care be transparent."

In this Issue

Executive Associate Dean of Research Affairs **page 1**

IUPUI 1st Annual Research Day **page 1**

Resources for All **page 2**

IBMG New Student Orientation **page 2**

New Center Opens **page 3**

IUSM Welcomes Dr. George Rausch **page 3**

IUSM Doctoral Students Receive

Accolades at IUPUI's First Annual Research Day

IUSM graduate students took first, second, and third place in the first annual Indiana University-Purdue University Indianapolis (IUPUI) Research Day Graduate and Professional Student Poster Presentation.

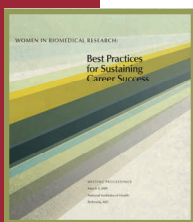
Michael Olaopa, doctoral student in the Medical and Molecular Genetics program presented, "Effects of Pax3 Mutation and Neural Crest Genetic Ablation Upon Heart Morphogenesis", and received 1st Place; Natalie

Case, doctoral student in the Medical Neuroscience program presented, "A Stress-Reactive Genetic Animal Model of Bipolar Disorder and Co-Morbid Substance Abuse: Phenomic, Convergent Functional Genomic and Biomarker Studies", and received 2nd place; and, Jennifer LeVora, also a doctoral student in the Medical Neuroscience program, presented, "Biochemical and Genetic Analysis of Parkinson's Disease Associated Proteins, Molecular Transporters, And Stress Response Proteins In C. elegans Models of Manganism", and received 3rd Place.



Resources for All

Women in Biomedical Research: Best Practices for Sustaining Career Success



The National Institutes of Health (NIH) recently released proceedings from the March 4, 2008 conference on “Women in Biomedical Research: Best Practices for Sustaining Career Success”. The conference was sponsored by the National Center for Research Resources, the Office of Research on Women’s Health, and the NIH Working Group on Women in Biomedical Careers. The Working Group, led by Elias Zerhouni, M.D., Director, NIH, and Vivian Pinn, M.D., Director, Office of Research on Women’s Health, and Associate Director for Research on Women’s Health, NIH, was formed after the National Academies’ Report, *Beyond Bias and Barriers, Fulfilling the Potential of Women in Academic Science and Engineering* was released. This conference is one of many initiatives of the Working Group that highlights best practices currently in place or under development at academic health centers, private industry and in the military. View the [full proceedings](#).

Committee on Institutional Cooperation (CIC) – Doctoral Directory

The Committee on Institutional Cooperation (CIC) has recently released the CIC Doctoral

Directory. The directory is a tool intended to facilitate faculty and post-doctoral diversity recruitment efforts, as well as facilitate networking and peer mentoring among doctoral degree recipients. Alumni of CIC Member Institutions (including Indiana University) from underrepresented groups in higher education are encouraged to register. For more details visit the [Doctoral Directory](#).

Want to Work Closer to the Clinic?

The Clinical and Translational Science Network (CTSciNet) is a website designed to provide career guidance to MDs interested in research, M.D.- Ph.D. trainees and research physicians, as well as doctoral students and Ph.D. degree holders who want to work closer to the clinic. Many organizations came together to launch this site including the Association of American Medical Colleges (AAMC), the American Association for the Advancement of Science (AAAS), and Science Careers. Interested in learning more? Visit [ScienceCareers.org](#).



10 Ph.D. Programs

Anatomy & Cell Biology

Biochemistry & Molecular Biology

Cellular & Integrative Physiology

Medical & Molecular Genetics

Medical Biophysics & Biomolecular Imaging

Medical Neuroscience

Microbiology & Immunology

Pathology & Laboratory Medicine

Pharmacology

Toxicology

IUSM Graduate Division Prepares for the IBMG New Student Orientation

This fall 47 predoctoral students will enter into the Indiana University School of Medicine BioMedical Gateway (IBMG) Program. New student orientation will take place Thursday, August 20th and Friday, August 21st. The orientation provides an opportunity for the new students to meet fellow graduate students, acquire information about their academic



career at the IUSM, and learn how to select laboratories for rotations. As a result of feedback from last year’s orientation several new sessions have been added to the agenda. Students will have the opportunity to hear from current IBMG students on the “A Day in the Life of an IBMG Student” panel, speak with the campus health and dental insurance representative, and learn how to navigate the OneStart Student Portal.

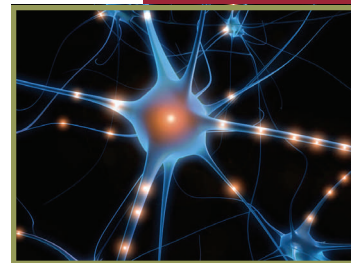
On August 20th from 4:00 PM – 5:30 PM the Graduate Division will host a reception in the Van Nuys Medical Science Building Atrium to allow the new students time to network with fellow classmates, senior students, faculty members, and deans. An invitation and RSVP request will be distributed soon.

New NIH-Funded Neuroimaging Core at the Indiana Alzheimer Disease Center

The Indiana Alzheimer Disease Center (IADC), recently announced the addition of their Neuroimaging Core facility funded by the National Institutes of Health (NIH). Andrew Saykin, Ph.D., Raymond C. Beeler Professor of Radiology and director of the IU Center for Neuroimaging, will lead the new core. According to a recent article in the IUSM Scope online newsletter the Neuroimaging core is located within the Indiana Institute for

Biomedical Imaging Science. The new core facility will provide cutting edge imaging technology and will facilitate IADC research programs focusing on the study of Alzheimer and other related dementias.

To learn more visit the Indiana Alzheimer Disease Center's website at: <http://iadc.iupui.edu/>.



IUSM Welcomes Dr. George Rausch

Earlier this year the IUSM named George Rausch, EdD, associate dean for diversity affairs. This month the School welcomes Dr. Rausch to campus and to his new role where he will provide guidance and leadership in diversity affairs at the school.

Dr. Rausch has 34 years experience in medical education and has been instrumental in developing and implementing many successful

programs aimed at increasing student diversity. He comes to us from Saint Louis University School of Medicine where he was the associate dean of multicultural affairs.

Dr. Rausch also holds a joint appointment at the IUSM as an associate professor of clinical family medicine. For additional details visit the June 5, 2009 issue of Scope: <http://scope.medicine.iu.edu/#1>.

Calendar of Events

June 29	Summer II classes begin
July 11	Deadline for 1st Year IBMG Students to Register for Fall
July 10	A Day in the Life Contest Deadline for current students
August 20-21	IBMG New Student Orientation
August 26	Fall Classes Begin

Student Contest

A Day in the Life of an
IU School of Medicine Graduate Student



INDIANA UNIVERSITY
SCHOOL OF MEDICINE
Graduate Division

Official Contest Rules

- Power Point, film, or other media presentation that illustrates a day in your life at IU School of Medicine.
- Must include narration, images, and a message about how your work will impact the future.
- Presentation must be produced on your personal time!
- Deadline for submission is July 10 at 5 PM to biomed@iupui.edu.
- Winner will be announced and prize awarded on July 24.



The winner's presentation may be used on the IUSM - Graduate Division website.

Research. Discover. Cure.

Message from the Director

Have you noticed? So many of us get absorbed by the daily rhythm that we forget to take note of the changing seasons. If you have stepped outside of your office/lab recently, you may have noticed that it's summer! And if any season is begging us to find a little time to play, it's summer. Consider taking a bike ride on the canal during your lunch break or even a hike and picnic at Eagle Creek Park over the weekend. Perhaps attend one of the many summer festivals in and around Indianapolis (check out indy.org). Small activities like this can help you maintain much needed balance.

Enjoy your summer!

Monica Henry

Monica Henry, Program Director, IBMG Program

