

INDIANA UNIVERSITY AT SOUTH BEND

ANNUAL REPORT

1974-75

INDIANA UNIVERSITY AT SOUTH BEND

ANNUAL REPORT

1974-75

OVERVIEW OF INDIANA UNIVERSITY AT SOUTH BEND FOR 1974-75

In 1974-75, enrollment at Indiana University at South Bend resumed a climb that had been interrupted during the previous two academic years. Fall enrollment was, for the second time in the history of the campus, exceeded by the spring enrollment, which reached a campus peak of 5,491 credit students. Three factors suggest themselves as possible and partial explanations for the enrollment turnaround. More vigorous and better coordinated recruiting activities by IUSB and the I.U. system were undertaken last year compared to prior years. Secondly, the nationwide economic slump appears to have prompted some students to go to school because they are unable to find jobs. Finally, there appears to be a waning of the fad of questioning the utility of a college education.

In response to growing area and state demands for more sub-baccalaureate, vocationally oriented college programs, IUSB's Division of General and Technical Studies director devoted the year to planning and initiating proposals for several new DGTS programs. IUSB also entered into discussions with Purdue University regarding the possibility of offering, through a host-guest relationship, certain Purdue technology programs which are desired by area industrial employers.

This campus remains totally committed to the value of the liberal arts and sciences, even while exploring new paraprofessional, vocational programs. Of special satisfaction was the approval during

the past year of a Fine Arts degree at IUSB by the Indiana Commission for Higher Education.

Equally satisfying was the extension of accreditation for five years, for all programs offered on the South Bend campus, by the North Central Association of Colleges and Schools, which resulted from a May visit by an NCA team which looked at the graduate programs at IUSB.

Undoubtedly the most significant event of the year, however, was the purchase by Indiana University in February of the Associates Corp. of North America complex of buildings and property just west of the present IUSB campus. The property so acquired will begin coming into IUSB's possession in the summer of 1978, and all of it will be available for University use by 1982. The acquisition will nearly double the physical plant capacity and acreage of IUSB, and it will allow for the orderly expansion of the campus in both instructional and student-service areas. The acquisition has important long-range benefits for IUSB and was greeted by exceptionally positive community response.

ORGANIZATION OF THE CAMPUS

No major structural changes were made at Indiana University at South Bend during the 1974-75 year.

Dr. Joseph L. Peyser resigned as Dean of Faculties, effective the end of the academic year, because of health considerations. A limited, Indiana University-wide search for a successor was inaugurated in June.

Dr. Robert A. Dubick was appointed Dean of Student Services late in the academic year; he served as Acting Dean for the bulk of the year.

Dr. Roland W. Garrett was appointed at the beginning of the year as Assistant Dean of Faculties, and Dr. James H. Ryan was chosen Director of Continuing Education, with the additional title of Coordinator of the Evening Program.

Finally, Alfred Oppenheimer was appointed at the start of the year to the position of Campus Coordinator of the Professional Practice Program.

The appendix of this report includes a staffing pattern table (Table I) and a table of campus organization (Table 2).

STUDENT SERVICES

The Student Services Division of Indiana University at South Bend is primarily supportive in nature. It supports the academic areas of the University by recruiting, admitting, and enrolling those students who can be best served by the curricular programs available.

The Division seeks to make the processes of application, admissions and enrollment as clear and concise as possible, while servicing the needs of both students and faculty. Among services to the student is a financial aids office which administers scholarships, grants, loans, work-study awards, and information about part-time employment and assistantships. Also included in the Division of Student Services is an Activities Program which seeks to complement the regular academic programs of the University, and to aid in the cultural, social, and intellectual development of students.

Student Services has completed the fifth year of a Special Services Program. Special Services is part of the federal Trio Program designed to make higher education available to students who might not otherwise have considered college: low-income students, physically handicapped students, and veterans. The Program sponsors students for admission to the University and then offers academic and personal support to help them make it. The Student Services Administrative Committee began discussing alternative ways to integrate the Special Services Program into the Division of Student Services. The Special Services Program must be absorbed into the divisional budget, on a pro-rated basis, beginning with the 1976-77 fiscal year.

The Counseling Center at IUSB provides group and individual counseling: personal, social, career, and marriage-and-family counseling; a counseling practicum program for graduate education students, and professional development and in-service training opportunities for both faculty and students. With the assistance of the Professional Practice Program, the Counseling Center staff was able to offer aptitude, vocational and personality testing services to IUSB students. The tests and inventories available were:

I. Intelligence

WAIS - Wachsler Adult Intelligence Test

II. Aptitude

Bennett Mechanical Comprehension Test
Flanagan Aptitude Classification Tests

III. Occupational Interest

Strong Campbell Interest Inventory
Self-Directed Search (J. Holland)

IV. Personality

Tennessee Self Concept Scale
Edwards Personal Preference Schedule
Omnibus Personality Inventory

The Counseling Center has also been used as a training site for leadership courses offered by the Division of Education and as a supplemental classroom setting for other Education and Psychology courses.

The Counseling Center is staffed with faculty and student volunteers. Without the continued generosity of these individuals the Center could not remain functioning.

The Office of Scholarships and Financial Aid has assumed fiscal and administrative responsibility for the following programs: State Scholarship Program, State Educational Grant Program, Basic Educational Opportunity Grant Program, and the IUSB Scholarship Programs. These programs, in the past, have been administered centrally out of the University Office of Scholarships and Financial Aid on the Bloomington campus.

A major innovation implemented during the 1974-75 year was the production of a combined application for Financial Aid and Admissions. This has resulted in increased student awareness of services offered.

Health services at IUSB are minimal. Currently students are offered a health-insurance plan and two small rooms for the administration of first aid. The Director of Safety and Security holds a first-aid card and can administer emergency first aid. The IUSB Program in Dental Hygiene offers clinical services to students.

As a special service to current and former members of the Armed Forces, the University provides office space for representatives from the Veterans Administration. This arrangement was entered into during the Fall Semester 1974-75. The Veteran Representatives offer assistance with the complete range of VA benefits, especially educational assistance.

In the Appendix will be found tables of headcount and FTE enrollment (Table 3), of credit-hour enrollment (Table 4), of student geographic distribution (Table 5), and 1975 graduates (Table 6).

In an effort to enhance recruitment techniques for identifying qualified students in the more remote geographic areas, the Office of Admissions participated in the CEEB (College Entrance Examination Board) Student Search Service. This computer-assisted program identified two hundred and forty-five (245) individuals not contacted by means of our normal recruitment efforts. The Office of Admissions coordinated and participated in two 'College Fairs' in the local community to better inform prospective students and their families of the programs available at IUSB.

The recommendations of a Chancellor's Committee on Admissions and Recruitment have resulted in better coordination between the Admissions Office and the University Division in the areas of high school visitations and follow-up. The University Division continues to have primary responsibility for high school recruitment. Two high school open house days were held for prospective students and their families. Visitations are programmed throughout the academic year to thirty-five (35) high schools in St. Joseph, Elkhart, LaPorte, Marshall, Fulton, Starke, and Kosciusko counties. Table 8 in the appendix illustrates admission patterns.

Table 9 summarizes the financial aid picture at IUSB during the 1974-75 year. Awards totalled 1,630 for a sum of \$759,403.

Indiana University at South Bend has a variety of student organizations in which all students are encouraged to participate. These include a Student Association, various academic departmental clubs, fraternities and sororities, and other student-interest organizations.

An athletic program offering intramural activities was available this past year to all interested students. The campus newspaper, The Preface, and a literary magazine, The Analecta, are published by the students. A Course and Instructor Evaluation Handbook was also published. A day-care center for children of students is operated by Parents-Plus, a student organization, at the Evangel Heights United Methodist Church.

Student Activities Budget: 1974-75

A Student Activities Committee was established during the 1974-75 academic year for the purpose of approving the Student Activity Budget before it is sent through the usual channels for final review and approval. The Committee assists the Student Association in the formulation and presentation of student activity budgets, budget alteration proposals and in the interpretation and operation of University policies and procedures affecting student activities. This process was implemented to help insure the necessary continuity in the year to year planning and operation of the Student Activities' program.

The revised budget for 1974-75 totalled \$81,493.50. The budget was distributed in the following way:

1. Social-Academic Activities - \$21,088.00

During the 1974-75 school year, this money was used to provide a film series and guest lectures on campus for the educational and cultural growth of the student body, faculty and administration.

2. Athletic Activities - \$5,020.00

It is the objective of the Office of the Dean of Student Services to involve as many students as possible in a program of intramural athletics which would provide a healthy and rewarding experience to the participants. Our present intramural program is made up of students, faculty, administrators, and their spouses. Our program included basketball, volleyball, table tennis, softball and bowling.

3. Day Care Center - \$17,200.00

During 1974-75 approximately 400 children were assigned to the care of the Day Care Center. The students involved in this program rent rooms in a church one and one-half miles from the campus.

4. Student Government - \$14,355.00

This money was used to operate a very efficient Student Senate.

5. Publications:

a) "Preface" (newspaper) - \$15,696.50

IUSB's student newspaper is printed once a week and is distributed "free" to everyone in the University.

b) "Analecta" (literary magazine) - \$4,620.00

IUSB's literary magazine was published twice during the 1974-75 academic year.

c) "Evaluation Handbook" - \$3,514.00

The Student Association published an instructor and course evaluation book during the Fall semester and distributed copies free of charge.

d) Student Directory - no cost to Student Activities

During the 1974-75 school year, a student directory was distributed to the student body free of charge.

The Office of the Dean of Student Services, in collaboration with the leaders of the Student Association, developed and presented a workshop for the new members of the Student Senate. The workshop offered structured experiences in communication skills and processes as well as a general introduction into the procedures used at IUSB for budgeting and purchasing and other areas of confusion or concern to the student body. The workshop was held during August, 1974 and was found by those who attended to be a worthwhile experience. Other workshops are being planned for the coming academic year.

Counseling activities aimed at meeting the personal needs of students and faculty have already been described in this section. The University Division also provides counseling at the academic, personal and vocational levels for all freshmen students, as well as for students who elect to remain within the division as "exploratory" students during their sophomore year. Newly-admitted students receive their first counseling experience at freshman orientation, and all students in the University Division are encouraged to consult with the counseling staff at least twice each semester. The Division offers a credit course in career development for those students who are undecided about their college major and career. It is a two-credit-hour course entitled "Personal Career Development."

A questionnaire was developed and administered to all professional Student Services personnel during the Fall Semester, 1974. The questionnaire was developed to gather process accountability data for student Services in terms of effort and function. It was concluded that seventy-one percent of the Division's effort was in two areas,

namely, administrative duties and direct student contact. Research development and professional growth activities accounted for thirteen percent of our total effort. Direct faculty contact and teaching accounted for thirteen percent of our effort during 1974-75. The Division of Student Services contributed sixteen hours per week or three percent of its total effort to public and professional services outside the university.

ACADEMIC AFFAIRS

Fourteen new IUSB faculty and full-time administrative staff members were added during the year (see Tables 11 and 12). Tenure was awarded to 13 faculty members, and 11 were promoted in rank (see Tables 13 and 14.)

An increase in outside funding of \$84,489 was experienced over the previous year's awards; of 25 applications for external support processed, 58 per cent were funded. Eighteen grants-in-aid of research and 17 summer faculty fellowships were awarded from University funds. Additionally, one faculty member received a grant from the President's Council on the Social Sciences, two Bio-Medical grants-in-aid were awarded, and five Course Development and Learning Resources grants went to IUSB faculty members (see Table 15.)

The North Central Association of Colleges and Schools sent a visiting team to IUSB in May to review the campus's graduate programs. The result was re-accreditation of IUSB through the master's level for a five-year period, with re-examination due in the spring of 1980.

The Indiana Commission for Higher Education authorized four new degrees to be conferred at the South Bend campus during the past year. They are:

B.A. in Fine Arts

B.S. in Music Outside Field

M.S. in Education/Counseling and Guidance

M.S. in Education/Secondary Education

A new subconcentration -- in Marketing/Advertising -- was implemented in the Division of Business and Economics.

The Division of General and Technical Studies was active in planning and developing new programs in hospital dietary technology, distribution and marketing technology, banking and finance, and early childhood education. The Divisional director also explored the possibility of offering Purdue technological programs in South Bend through a host-guest arrangement between IUSB and Purdue University. The Purdue discussions were stimulated by the South Bend-Mishawaka Area Chamber of Commerce.

In preparation for planned expansion of the IUSB Evening Program, a Task Force on Scheduling functioned throughout the spring semester; it made a series of recommendations for more efficient utilization of space and instructional time.

The IUSB International Studies Committee sponsored fall and spring lecture series. Credit courses were conducted in the summer of 1975 in Bonn and England.

An Honors Program was developed during the year for implementation in 1975/76. It is designed to serve better IUSB's best students.

Teaching excellence at IUSB was recognized through the selection of Dr. Michael J. Stark, Assistant Professor of Psychology, as a recipient of the Ulysses G. Weatherly distinguished teaching award.

The Graduate Studies Committee continued to function as a coordinating body and forum for new graduate-program proposals.

The IUSB Academic Senate developed, debated, and adopted a new constitution which reorganizes the committee structure and provides procedures to serve the faculty and campus better.

IUSB's music program continued to flourish in 1974/75, with a broad variety of performances scheduled through the year. Arrangements were made for the 1975/76 residence at the IUSB campus of the International String Quartet. The Division of Music also made arrangements with the 10-year-old South Bend Symphonic Choir to have that organization in residence at the University in 1975/76.

Theatre I.U. at South Bend presented four major academic-year productions ranging from Brendan Behan's The Hostage to the 19th Century farce Charley's Aunt. The University also accepted the James Lewis Casaday Theatre Collection gift, containing books, periodicals, programs, librettos, recordings, scores, and memorabilia, and sponsored a grand opening of the collection in the spring.

Under the direction of Dr. James H. Ryan, the IUSB Division of Continuing Education experienced a year of renewal and rejuvenation. The number, scope, and variety of courses were expanded; among new areas of concentration were Women's Studies and Community Development. Table 7 indicates the expansion of this segment of the University.

Table 10 lists all authorized degree programs.

Table 16 shows IUSB library resources.

Faculty productivity during the year is illustrated by the following selective list of publications and activities.

BOOKS

Bartholomew, Wayne, Assoc. Prof. Business & Economics - "Dimensions of Economic Inequality Between Blacks and Whites in the State of Indiana", published as Monograph #4 by the BBER of IUSB.

Baur, Gregory R., Assoc. Prof. Education - Helping Children Learn Mathematics, Cummings Publishing Company.

DeCoster, Thomas A., Director, Public & Environmental Affairs - Everything You Always Wanted to Know About Taxes, Indiana Forum, Inc., 1975.

DuVall, Charles R., Assoc. Prof. Education - Co-authored "The Use of Videotape Recordings in the Analysis of Student Teaching Performance," a chapter in The Supervision of Clinical Experiences in Teacher Education by James A. Johnson and Floyd Perry, editors, Dubuque, Iowa: Kendal/Hunt Publishing Company, 1974, pp. 136-140 (Reprinted from The Teacher Educator, Autumn, 1971, pp. 12-16).

DuVall, Charles R., Assoc. Prof. Education - Co-authored "A Program to Train Skilled Supervisors of Student Teachers," a chapter in The Supervision of Clinical Experiences in Teacher Education by James A. Johnson and Floyd Perry, editors, Dubuque, Iowa: Kendall/Hunt Publishing Company, 1974, pp. 208-212 (Reprinted from Supervisors Quarterly, Spring, 1971, pp. 24-24)

DuVall, Charles R., Assoc. Prof. Education - Co-authored Educators Index of Free Materials, 84th Edition, Randolph, Wisconsin: Educators Progress Service, Inc., 1975.

Echelberger, Wayne F., Professor Public & Environmental Affairs - Co-authored "Mixing in Anaerobic Digestion", Biotechnology and Bioengineering, Vol. XVI, 757-770, John Wiley & Sons, Inc. (1974).

Echelberger, Wayne F., Professor Public & Environmental Affairs - Co-authored "Microbial Identification by Pyrolysis - Gas Liquid Chromatography", Proceedings 4th Annual Environmental Engineering and Science Conference, University of Louisville, Louisville, Kentucky (1974).

Elmer, Glaister A., Prof. & Chairman, Sociology - Elmer Glues-It, a digest of original sociological research reports done by students at IUSB, a paperback book with original cartoon illustrations.

Farrow, Jonelle M., Associate Prof. Psychology - Co-authored Note on scuttlebutt effect among college students. Perceptual and Motor Skills, 1974, 39, 353-354.

Farrow, Jonelle M., Associate Prof. Psychology - Co-authored Inter-subject communication as a contaminating factor in verbal conditioning. Perceptual and Motor Skills, 1975, 40, 975-982.

Kochanowski, Paul, Asst. Prof., Business & Economics - The Use of Federal Funds in Indiana: A Cost-Benefit Approach, Monograph State of Indiana Commission on Tax and Finance Policy.

Massoud, Morcos F., Ass't. Prof., Business & Economics - "Management Information Systems and Their Impact on Management," a monograph published by the BBER of IUSB, April 1975.

Swanda, John R., Assoc. Prof., Business - The Impact of Managerial Systems on Role Conflict and Role Ambiguity: An Analytical Model for Organizational Modification, published June, 1974 under the auspices of the Bureau of Business and Economic Research; serialized by the Library of Congress.

Tawadros, Milad A., Assoc. Prof., Economics - Co-authored Monograph "Nonbehavioral Models to Forecast South Bend Area Economic Indicators," published by the Bureau of Business and Economic Research, IUSB, November, 1974. (Co-author: M. McCuddy).

Vander Ven, Tom R., Assoc. Prof., English - Poems - "Fall of the Monarch" and "Breathe Once Before the End," Michigan Quarterly Review (Winter, 1975).

Withey, John J., Ass't. Prof., Business & Economics - "Job Assignments in Physical Distribution Organizations," International Journal of Physical Distribution, Vol. 4, No. 3, 1974, pp. 196-203.

ARTICLES AND PAPERS

Bartholomew, Wayne, Assoc. Prof., Business & Economics - "Promise of Equality for Blacks Unfilled in Vast Areas", published as a Michiana Point of View item in The South Bend Tribune.

Brandewie, Ernest B., Asst. to the Chairman Arts & Sciences, Asst. Prof., "A Note on Three Kinship Terms" in Oceania, 1974.

Calvin, Richmond E., Asst. Prof. Education - "Preservice and Inservice Education: A Case for Teacher Aides," Teacher Education Forum, Vol. 3, No. XV.

Calvin, Richmond E., Asst. Prof. Education - Co-authored with J. V. Peterson and J. Yutzy, "Human Relations Training, Contracting and Field Experiences: An Integrative Approach to the Teaching of an Educational Foundation Course," Peabody Journal of Education.

Calvin, Richmond E., Asst. Prof. Education - Co-authored with J. Yutzy and J. V. Peterson, "Warning: Field Experiences May Be Dangerous," Student Personnel Association for Teacher Education.

Chesnut, Glenn F., Asst. Prof. History - "Christianity in the Roman Empire: Why It Must Be studied by the Historian and the Classicist in a Secular University," paper read at the joint national meeting of the American Philological Association and the North American Patristics Society in Chicago December, 1974.

- Clipper, Lawrence J., Prof. & Chairman of English Dept. - "Edward Waverly's Night Journey." South Atlantic Quarterly. Autumn, 1974.
- Clipper, Lawrence J., Prof. & Chairman of English Dept. - "Archetypal Figures in Early Film Comedy." Western Humanities Review. Fall, 1974.
- Cochran, Robert B., Asst. Professor, English - "Poem for the Wedding of Friends", Kansas Quarterly (Summer, 1974), p. 75.
- Cochran, Robert B., Asst. Professor, English - "Beginnings" (poem), Kansas Quarterly (Summer, 1974), p. 75.
- Cochran, Robert B., Asst. Professor, English - "Folk Elements in a Non-Folk Game--The Example of Basketball", paper delivered at annual meeting of American Folklore Society in Portland, Oregon, November, 1974.
- Cochran, Robert B., Asst. Professor, English - "Rain in Chiapas" (poem), Southern Poetry Review, XV, #1 (Spring, 1974), p. 20.
- Domingue, Nicole Z., Asst. Prof. English - Review of Language and Cultural Diversity in American Education, ed. by R. D. Abrahams and R. C. Troike published in Language Sciences, April, 1975.
- Dudley, Gerald O., Assoc. Prof. Education - A continuing feature on "The Career Relevant Measurement and Evaluation Seminar," in two issues of Career Digest (Vol. 6, Nos. 1 and 2, 1974-75) published by the Indiana Career Resource Center and distributed periodically to 2,500 national readers.
- DuVall, Charles R., Assoc. Prof. Education - Co-authored article with Donald W. Truex. "Computerized Community Resources: A Data Bank for Planning Field Trips," AEDS Journal, 7:4, Summer, 1974, pp. 102-106.
- DuVall, Charles R., Assoc. Prof. Education - Published research co-authored with Wayne J. Krepel. "Use and Misuse of Industry Sponsored Materials," Research in Education, 9:7 (July, 1974), p. 125 (ERIC Document No. Ed 088 748).
- DuVall, Charles R., Assoc. Prof. Education - Published Research. "A Survey of School Board Policies and Administrative Procedures for Dealing with Supplementary Free Materials in Selected Smaller School Districts in the United States," Research in Education, 9:8 (August, 1974), p. 64 (ERIC Document No. ED 089 416).
- DuVall, Charles R., Assoc. Prof. Education - Published research co-authored with Jerry C. Mitchell. "A Study Comparing the Opinions of Music Publishers and Music Educators Concerning Copying of Extra Parts," Research in Education, 9:11 (November, 1974), p. 93 (ERIC Document No. ED 093-301).
- DuVall, Charles R., Assoc. Prof. Education - Academic Papers presented with Wayne J. Krepel. "Use and Evaluation of Industry Sponsored Materials," to Indiana State Teachers Association, North Central Division Fall Meeting, Notre Dame, Indiana, October, 1974.

Echelberger, Wayne F., Professor, Public & Environmental Affairs - Contributed five articles to Environmental Engineer's Handbook, Volume 1, "Water Pollution", Bela G. Liptak, Editor, Chilton Book Company, Radnor, Pennsylvania (1974).

Echelberger, Wayne F., Professor, Public & Environmental Affairs - Contributed two articles to Environmental Engineer's Handbook, Volume 3, "Land Pollution," Bela G. Liptak, Editor, Chilton Book Company, Radnor, Pennsylvania (1974).

Elmer, Glaister A., Prof. & Chairman, Sociology - Paper on "The Employed Wife: Equal Pay for Double Work?" delivered at the annual meeting of the International Sociological Association in Canada.

Funk, H. James, Asst. Prof., Education - Paper on "Air is for Breathing," Indiana State Teachers Association, October 1974.

Funk, H. James, Asst. Prof., Education - Co-authored with L. James Walter, an article "Individualized Instruction: A Continuum Model", Teacher Education Forum, Vol. 2, Number 21, June, 1974.

Garrett, Roland, Assistant Dean of Faculties - "The Nature of Privacy," Philosophy Today, 18 (1974).

Garrett, Roland, Assistant Dean of Faculties - "The Structure of Plato's Euthyphro," Southern Journal of Philosophy, 12 (1974).

Gieske, Thomas H., Ass't. Prof., Biology - Paper, "Cadmium Inhibition of Renal Amino Acid Transport," 90th annual meeting, Indiana Academy of Science, November, 1974, DePauw University.

Gottwald, Richard L., Ass't. Prof., Psychology - "Concept attainment and classification learning." Paper presented at the meeting of the Psychonomic Society, Boston, 1974.

Hamburg, Roger P., Associate Professor, Political Science - Paper "Soviet Views of Detente and Analysis of the American Political Process" annual meeting, International Studies Association, Washington, D.C.

Hanrahan, George D., Associate Professor, Business & Economics - "Comparative Causality of M1 and FEB," Abstract of paper, Proceedings of the Missouri Valley Economics Association Meeting, October, 1974, St. Louis, April, 1975.

Hanrahan, George D., Associate Professor, Business & Economics - "South Bend Area Round-Up," Indiana Business Review, Sp-Sum, 1974; Fall-Win, 1974; Sp-Sum, 1975, Bloomington.

Harlow, Howard R., Asst. Prof., Business & Economics - "Achieving Energy Self-Sufficiency in the United States by 1985--Can We and Sould We?" Paper, Indiana Academy of Social Sciences, October, 1974.

Hemley, Elaine Gottlieb, Ass't. Prof., English - Story: "Go With Live, He Says," Ararat Magazine, Spring, 1975.

Hoffman, Miles K., Public & Environmental Affairs, Political Science - Paper, annual meeting, American Political Science Association, Chicago, Ill., September, 1974: "Two Concepts of Ideology: Descriptive and Critical."

Huitink, Geraldine M., Assoc. Prof., Chemistry - "Coumarins as Fluorescent Indicators of Metal Ions," Proc. Indiana Acad. Sci. 82: 161-166.

Huitink, Geraldine M., Assoc. Prof., Chemistry - Co-authored with Donald P. Poe and Harvey Diehl. 1974. "On the Properties of Calcein Blue." Talanta 21: 1221-1229.

Jessen, Robert B., Assistant Professor, Sociology - "The Role of Social and Demographic Variables in Spatial Preferences". Paper, Association of American Geographers, Mil. 4/75.

Jessen, Robert B., Assistant Professor, Sociology - "Spatial Preference as a Predictor of Migration". Paper, North Central Sociological Association, Columbus, Ohio, May 1975.

Jessen, Robert B., Assistant Professor, Sociology - "Toward a Unified Typology of Space," paper International Conference on Housing and Transportation, Detroit, June, 1975.

Joray, Paul A., Asst. Prof., Business & Economics - Co-authored with Charles L. Hulin, "Temporary Work in Modern Society: The Temporary Worker and the Temporary Firm in the United States," paper International Conference in Geneva, Switzerland, sponsored by the International Institute for Temporary Work, September, 1974.

Joray, Paul A., Asst. Prof., Business & Economics - Co-authored with Paul Kochanowski "A Discussion of the Major Provisions, The Standards for Rail Continuance Subsidies and the Economic Impact of the Rail Reorganization Act of 1973," paper 1st Annual Convention of the Eastern Economic Association, Albany, N.Y., October, 1974.

Joray, Paul A., Asst. Prof., Business & Economics - Co-authored with Paul Kochanowski "Economic Issues in Rail Line Discontinuances" paper, Western Economic Association Annual Meeting, San Diego, June 25-28.

Joseph, Thomas, Assoc. Prof., Biology - "Coccidia from the opossum Didelphis virginiana (Kerr)," Proceedings of the Indiana Academy of Science, Vol. 83, p. 467.

Joseph, Thomas, Assoc. Prof., Biology - Presented paper at the 90th annual meeting of the Indiana Academy of Science at DePauw University. "Evidence of superfetation or delayed implantation in the opossum Didelphis virginiana."

Kimmel, E. Marcia S., Asst. Prof., Education - Monthly column with Dr. Eric Kimmel reviewing children's books for South Bend Tribune.

Kimmel, Eric A., Assistant Professor, Education - Children's book review columns for the South Bend Tribune and Young Judaeon.

Kochanowski, Paul, Asst. Prof., Business & Economics - "Energy as a Constraint to Economic Growth," Papers and Proceedings Indiana Academy of Social Sciences, 1974.

Kochanowski, Paul, Asst. Prof., Business & Economics - "The Statistical Determinants of Regional and State Variations in the Federal Tax Burden--Grant Received Ratio," Eastern Economic Association Meetings, Albany, New York, October, 1974.

Lamon, Lester C., Asst. Prof., History - "Was Progressivism 'For Whites Only'? A Close Look at Black Nashvillians," paper, Indiana Academy of Social Sciences, DePauw University- October, 1974.

Lamon, Lester C., Asst. Prof., History - "The Black Community in Nashville and the Fisk University Student Strike of 1924-25," The Journal of Southern History, XL (May, 1974), 225-244.

Lamon, Lester C., Asst. Prof., History - "Black Americans and the American Revolution," Indiana Social Studies Quarterly, XXVII (Winter, 1974-75), 71-80.

Long, John B., Associate Prof., Psychology - "Discriminative, informational, eliciting, and contiguous stimuli as secondary reinforcers for human subjects." Psychological Reports, 1974, 35, 839-844.

Long, John B., Associate Prof., Psychology - "Food versus water reinforcement for rats deprived of both," Psychological Reports, 1974, 36, 181-182.

Massoud, Morcos F., Ass't. Prof., Business & Economics - "Energy vs. Pollution--The Social Cost." Paper Indiana Academy of Social Sciences, Greencastle, October, 1974.

Massoud, Morcos F., Ass't. Prof., Business & Economics - "Social Accounting and Social Measurement," National Conference Proceedings, American Institute for Decision Sciences, Atlanta, November, 1974.

Massoud, Morcos F., Ass't. Prof., Business & Economics - "Complexity and Usefulness of Financial Statements," Southeastern AIDS Proceedings, Columbia, S.C., February, 1975.

Massoud, Morcos F., Ass't. Prof., Business & Economics - "Cybernetics and Management," published in the Western Region AIDS Proceedings, Las Vegas, Nevada, March, 1975.

Massoud, Morcos F., Ass't. Prof., Business & Economics - "The Impact of Energy Shortage on Environment," published in the Midwest AIDS Proceedings, Indianapolis, April, 1975.

Massoud, Morcos F., Ass't. Prof., Business & Economics - "A Planning Model for the Multi-Process Enterprise," published in the Midwest AIDS Proceedings, Indianapolis, Indiana, April, 1975.

Massoud, Morcos F., Ass't. Prof., Business & Economics - "The New Pension Reform Act and APB Opinion No. 8," paper American Accounting Association Meeting, Midwest Region, Chicago, April, 1975.

Marti, Donald B., Assoc. Prof., History - Abstract articles in the Journal of the History of Ideas for the various publications of the American Bibliographical Center; Abstracts appeared this year in Historical Abstracts and America: History and Life.

Mawhinney, Vaughn Thomas, Assistant Prof., Psychology - "The Production and Measurement of Standing in Severely Retarded Children," paper American Psychological Association, New Orleans.

Naffziger, Fred J., Asst. Prof., Business & Economics - "All Power to the Arbitrator: The Aftermath of the Steelworkers Trilogy, Collyer Wire and ENA," American Business Law Journal, Winter, 1975.

Naffziger, Fred J., Asst. Prof., Business & Economics - The NLRB Attitude on Discrimination and the Judicial Response, Labor Law Journal, January, 1975.

Naffziger, Fred J., Asst. Prof., Business & Economics - "When Management Faces a Union Organizing Campaign," Management Review, August, 1974.

Naffziger, Fred J., Asst. Prof., Business & Economics - "Interlocking Directorates: New Antitrust Challenges by the Federal Trade Commission," American Business Law Journal, Spring, 1974.

Nasta, Manohar D., Assoc. Prof., Business & Economics - "A Non-Linear Programming Model for Designing the Restart and Recovery Cycle of an Information Processing System," Joint ORSA/TIMS National Meeting, San Juan, Puerto Rico, October, 1974.

Nasta, Manohar D., Assoc. Prof., Business & Economics - "The Use of an Integrated Model in the Operation of an Urban Police Department," Invited paper Third National Conference on New Systems in Law Enforcement and Criminal Justice, Chicago, October 2-3.

Nisenholz, Bernard, Asst. Professor, Education - Co-authored with Anne Marie Haase, "The Meaning of Change in the Student-Teacher Interaction," National Association of Secondary School Principals Bulletin.

Nisenholz, Bernard, Asst. Professor, Education - "I Believe--Therefore I behave." Activities and Exercises for Affective Education. Thayer and Beeler, Eds. American Educational Research Association, Special Interest Group, Affective Aspects of Education, 1975.

Parelius, Allen M., Associate Professor, Education - "Career Education of the Handicapped," Career Digest, Vol. 6 No. 3, May, 1975.

Parelius, Allen M., Associate Professor, Education - "Student Outcome Accountability," 99th Annual International Meeting of the American Association on Mental Deficiency. Portland, OR 1975.

Peck, John E., Associate Prof., Economics - "State Funding of the Schools: Need vs. Ability," School Management, November, 1974.

Peck, John E., Associate Prof., Economics - "The Development and Application of a Model to Simulate the Operation of an Urban Police Department," The Police Chief.

Peck, John E., Associate Prof., Economics - "The Use of Simulation in the Operation of an Urban Police Department," Abstract published in the Proceedings of the University of Pittsburg's 5th Annual Conference on Modeling and Simulation, with M. Nasta, February, 1975.

Peck, John E., Associate Prof., Economics - "The Use of an Integrated Model in the Operation of an Urban Police Department" delivered with M. Nasta at NYU's Third National Conference on New Systems in Law Enforcement and Criminal Justice, Chicago (October, 1974) and Phoenix (November 19, 1974).

Peck, John E., Associate Prof., Economics - "Impact of a Simulation Model on the Operation of an Urban Police Department," with M. Nasta, and P. Gallagher at Operations Research Society of America/The Institute of Management Societies meeting in Chicago, May, 1975.

Peterson, J. Vincent, Assistant Professor, Education - Co-authored with R. E. Calvin and J. A. Yutzy, "Human Relation Training, Contracting, and Field Experiences: An Integrative Approach to Teaching of an Education Foundations Course," accepted for publication in Peabody Journal of Education.

Peterson, J. Vincent, Assistant Professor, Education - Co-authored with L. Thayer, "A Dyadic Encounter on Counseling," The 1975 Handbook of Activities and Exercises for Affective Education, American Educational Research Association.

Peterson, J. Vincent, Assistant Professor, Education - Co-authored with R. E. Calvin and J. Yutzy, "WARNING: Field Experiences May Be Dangerous," article accepted for publication in June, 1975 issue of Journal of the Student Personnel Association for Teacher Educ.

Redwine, Judith A., Assistant Prof., Education - "Effect of Intent-Action Discrepancy and Student Performance Feedback on Teacher Behavior Change", with Walter Doyle, University of Notre Dame Journal of Educational Psychology, 1974, Vol. 66, No. 5, 750-755.

Ringen, Jon D., Assistant Prof., Philosophy - "Linguistic Facts: A Study of the Empirical Scientific Status of Transformational Generative Grammars," in M. Kac and M. Root, eds., Minnesota Working Papers in Linguistics and Philosophy of Language, No. 2, Fall, 1974, Departments of Linguistics and Philosophy, University of Minnesota, Twin Cities Campus.

Ringen, Jon D., Assistant Prof., Philosophy - "Transformational Generative Grammars as Descriptions of Idiolects." Paper presented to the Linguistic Society of America, Summer Meeting, Amherst, Massachusetts, July, 1974.

Rolston, Rodrick R., Associate Professor, Sociology - "Female-Male Hitchhiking Behavior and Sentiment," paper delivered at National Council on Family Relations in October (in Women Studies Abstracts, Rush, New York).

Rolston, Rodrick R., Associate Professor, Sociology - "Functional and Dysfunctional Aspects in the Female and/or Male Hitchhiking Arena of Interaction," North Central Sociological Assn. (in Sociological Abstracts, 1975).

Ryan, Patrick J., Assoc. Prof., Mathematics - Co-authored with R. A. Goldstein Rigidity and Energy Global Analysis Applications Vol. 11, International Atomic Energy Agency, Vienna, 1975.

Ryan, Patrick J., Assoc. Prof., Mathematics - Co-authored with R. A. Goldstein, Infinitesimal Rigidity of Submanifolds J. of Differential Geometry, 10 (1975).

Scherer, Paul H., Assoc. Prof., History - "British Attitude Toward Prussian Unification of Germany, 1815-1866," Proceedings of the Indiana Academy of the Social Sciences, 1973 (published in 1973).

Scherer, Paul H., Assoc. Prof., History - "The Influence of the American Revolution on European History," Indiana Social Studies Quarterly, Vol. XXVII, No. 3, Winter, 1974-75.

Scherer, Paul H., Assoc. Prof., History - "History of the Motion Picture," The Proceedings of the Michana Area Historians, February, 1975.

Scherer, Paul H., Assoc. Prof., History - Reviews: "Fisher of Kilverstone," History: Reviews of New Books, July, 1974.

Scherer, Paul H., Assoc. Prof., History - "Survey of Commonwealth Affairs: Problems of Expansion and Attrition 1953-1969," History: Review of New Books, September, 1974.

Scherer, Paul H., Assoc. Prof., History - "The Young Lloyd George," History: Reviews of New Books, January, 1975.

Simson, Eve, Asst. Professor, Sociology - "Interethnic Marriage and Divorce," Pacific Chapter of the American Association for Public Opinion Research, section on "Minority Community Research."

Tawadros, Milad A., Assoc. Prof., Economics - "A simulation model using sinusoidal functions for inventory systems", presented in June, 1975 in Zurich, Switzerland.

Tawadros, Milad A., Assoc. Prof., Economics - With Dr. Massoud, presented paper "A simulation auditing model to determine optimum sample sizes: A Bayesian Approach", June, 1975 in Zurich, Switzerland.

Thorson, Thomas L., Professor, Political Science - "Human Nature and Political Form," Midwest Political Science Association, Chicago 1974; "On the Ontology of Democracy," American Political Science Association, Chicago, 1974; presented papers at graduate seminar in politics, London School of Economics and graduate seminar in comparative politics School of Oriental and African Studies, University of London, March, 1975.

VanderVen, Tom R., Assoc. Prof., English - Paper - "The Marriage of Opposition: Sexual Difference in the Poetry of Robert Frost," Modern Literature Section of the MMLA, annual meeting, St. Louis, October, 1974.

Walter, L. James, Asst. Prof., Education - Paper "Performance-Based In-Service Education" presented at the National Conference on Teacher Education, October, 1974, Indianapolis.

Walter, L. James, Asst. Prof., Education - "Discipline in the Classroom," presented to the Noble I. Frederick Chapter, Student Education Association, January, 1975.

Weber, Neil V., Asst. Prof., Earth Sciences - Co-authored with H. J. Funk, "Using the Community as an Environmental Laboratory," Hoosier Association of Science Teachers, Inc. Newsletter, Vol. V., No. 2, pp. 6-7.

Weber, Neil V., Asst. Prof., Earth Sciences - Editor, Environmental Quality Newsletter, Michiana Watershed - St. Joseph County Chapter.

Weber, Neil V., Asst. Prof., Earth Sciences - "A Quantitative Analysis of the Relationship Between Geologic Structure and Drainage Line Orientation in a Neotectonic Region," Professional Paper, No. 6, Department of Geography, Indiana State University, pp. 41-55.

Weber, Neil V., Asst. Prof., Earth Sciences - "Drainage Patterns and Stream Classification in a Neotectonic Region," The Mississippi Geographer, University of Southern Mississippi, pp. 55-65.

Wing, George A., Prof., Business & Economics - Co-authored with A. Wayne Bartholomew "Arab Petroleum - American Food", Business Horizons, December, 1974.

Withey, John J., Ass't. Prof., Business & Economics - New Dimensions In Logistics Research, James F. Robeson (Ed.), Transportation Research Foundation, The Ohio State University, October, 1974, pp. 183-191.

Wolfe, Arthur D., Asst. Prof., Business & Economics - "Undergraduate Law: Developing Analytical Skills and a Positive Preference for the Legal System," American Bus. Law Assoc. meeting.

Yutzy, James A., Associate Prof., Education - Co-authored with Charles R. DuVall, "A Program to Train Skilled Supervisors of Student Teachers," The Supervision of Clinical Experiences in Teacher Education, Chapter 36, Kendall/Hunt Publishing Company, 1974.

Yutzy, James A., Associate Prof., Education - "Human Relations Training, Contracting and Field Experiences: An Integrative Approach to the Teaching of an Educational Foundations Course," Presentation to the National Conference on Teacher Education, October 31 and November 1, 1974, Indianapolis.

Zimmerman, W. Bruce, Associate Prof., Physics - "Should Your Thermostat Be Lowered? A Problem in Heat Flow," American Association of Physics Teachers, Anaheim, Feb., 1975.

SPEECHES AND LECTURES

Echelberger, Wayne F., Professor, Public & Environmental Affairs - Lecture - "Business and the Environment," Graduate School of Business Executive Program, Indiana University, Bloomington, Indiana, 21-27 June 1974; "Advanced Wastewater Treatment," Indiana State Board of Health, Indianapolis, August, 1974.

Elmer, Glaister A., Prof. & Chairman, Sociology - Talk at a meeting of the Experimental Aircraft Association, Chapter 132, about design characteristics of the XB-32 and sociological aspects of the design and testing of experimental aircraft.

Kaufman, Gloria, Assoc. Prof., English - "The Contemporary Voice," a talk delivered at IUSB Creative Arts Symposium, April 12, 1975.

Kimmel, E. Marcia, Assistant Professor, Education - Guest interviewed on Channel 2 (Cablevision) program "Modern Woman" on April 3, 1975 regarding "Women and Careers."

Kimmel, E. Marcia, Assistant Prof., Education - Interviewed on Channel 2 (Cablevision) Public Service program on Mayor's Commission on the Status of Women as the Chairperson of the Education Committee on May 7, 1975.

Klaybor, Michael S., Director, Special Services Program - Presenter at APGA Convention, New York City, March 26, 1975. Topic "Developing Humanistic Teacher Training Programs: Directions for Change; Presenter - IPGA Workshop, February 1975. Topic "Indiana Trio Programs: What, Where, and Why."

Knauss, Keith, Assistant Professor, Labor Education & Research Center - Initial coordinator of script writing for two one-hour PBS TV programs being produced by LERC and IU Department of Telecommunications as part of the series Workers in Indiana: Rights and Responsibilities.

Marcus, Philip S., Asst. Prof., Math - Talk "Mathematics as a Source of Poetic Metaphor," Hobart College, February, 1975.

Mehra, Romesh C., Ass't. Prof., Biology - Gave the following invited scholarly addresses at National Botanic Gardens, Lucknow, India: "Genetics and Future of Man" "Gene--Its Structure and Function"; "Genetic Regulation"; "Chromosome Strandedness"; "Physiology of Meiosis": Role of Ribosomes in Protein Synthesis."

Penikis, J. John, Asst. Prof., Political Science - Invited lecture: "Crises and Response Patterns in 20th Century Baltic Politics" at Russian and East European Studies Center, University of Michigan, Ann Arbor, March, 1975.

Ryan, Patrick J., Assoc. Prof., Mathematics - "Newton's Method", Jackson High School Calculus classes, Nov. 22, 1974.

Weber, Neil V., Asst. Prof., Earth Sciences - With W. B. Berry and L. L. Garber, "Energy-Environmental Crisis," panel discussion, Indiana State Teachers Association Regional Meeting, Notre Dame University.

Weber, Neil V., Asst. Prof., Earth Sciences - With H. J. Funk, "Developing Environmental Education Materials for the Elementary Classroom," Indiana State Teachers Association Regional Meeting, Notre Dame University.

Weber, Neil V., Asst. Prof., Earth Sciences - With H. J. Funk, "Total Environmental Education: Getting Environmental Education into Indiana Classrooms," Indiana Academy of Science, DePauw University.

CONCERTS, SHOWS, WORKSHOPS

Esselstrom, Michael J., Assoc. Prof., Division of Music - Guest conductor, Twin Cities Symphony, Benton Harbor/St. Joseph, Michigan.

Mawhinney, Vaughn Thomas, Assistant Prof., Psychology - Presented a workshop on Childrearing at an Early Childhood Education Conference at Notre Dame.

Mawhinney, Vaughn Thomas, Assistant Prof., Psychology - Presented two workshops on Behavior Management to the Benton Harbor School system's Title I parents, teachers, and staff. Benton Harbor, Michigan.

Peterson, J. Vincent, Assistant Professor, Education - Workshop with B. Nisenholz and R. Tirman, "Creating Dynamic Groups" Girl Scouts of Singing Sands, Inc., Niles, Michigan, Oct. 7, 1974.

Peterson, J. Vincent, Assistant Professor, Education - In-service workshop - "Humanizing The Classroom", Eggleston School Faculty, South Bend, IN Sept. 26, Oct. 10, Nov. 14, Dec. 15, Jan. 16, Jan. 24, 1975.

Ruff, Eldon E., Professor, Education - Conducted five workshops on Career Education.

Toth, John W., Assistant Prof., Communication Arts - Directed Boys From Syracuse for Presbyterian Players. Acted in Let Sleeping Wives Lie, Sister Lakes Playhouse. Acted in Nightwatch, Presbyterian Players.

ADMINISTRATIVE AND BUSINESS AFFAIRS

The general area of administrative and business affairs as these are managed or reviewed in the South Bend Business Office business functions include the following operations.

1. The acquisitions operation presently contains the process of Purchasing, Receiving, Stores, and, to the extent necessary, a modest Shipping process.
2. The Auxiliary Enterprise operation presently contains two elements--Bookstore and Food Service Concessions--both of which serve the academic community and provide modest net income for university uses.
3. The Budget Control operation monitors income and expense activities as these relate to program and budget plans, and compiles and distributes regular condition reports to Account Managers and to the Administration.
4. The Business Office Services operation contains a variety of special services the general management of which can be performed by one person. Generally, these services provide special kinds of support or facilities to the academic community, and each is either managed directly out of the Business Office or at the point of service. Some examples would be: travel; duplicating and printing; mail pick-up and delivery; telephone and internal communications; reservation and records services for the use of the University's facilities; University vehicle transportation and reservation; other minor services of a like nature.

5. The Computer Services operation is, organizationally, a part of the Campus Chancellor's general administrative program and budget area, providing high-speed data processing to the academic community of faculty and students as well as to the administration through its on-site equipment and personnel and links to the administrative and research computing and data processing centers in Bloomington.
6. The Development operation is generally supervised by the Business Manager and concerns itself with the medium- and long-term programs and plans for Campus expansion, land acquisition, and building facility requirements.
7. A "Learning Resources" operation occurs in the Business Office organization because of the existence of certain all-University academic facilities, which are by way of being elements either in the Physical Plant or elements in fixed equipment. These include the inventory and management of audio-visual tools and equipment needed in support of instruction, the two auditoria of the University and the closed-circuit television system for instruction.
8. The Personnel operation is substantially contained in the Business Office of the South Bend Campus. This operation concerns itself with the entire range of activities of recruiting, processing and records keeping for classified and certain administrative positions, and includes most of the processing and records keeping for the non-classified personnel such as faculty and senior administrators. In

this operation are included the various processes and sub-processes of the implementation of salary and wage standards, insurance and retirement, employment policies and procedures, unemployment insurance and workman's compensation, organization for affirmative action, and personnel matters of a similar nature.

9. The Physical Plant operation is generally subdivided into four major processes, which are Housekeeping and Custodial process for buildings and grounds, the Maintenance process for Physical Plant equipment, the Safety and Security process including, among other things, traffic and parking, and a Plant Engineering process for initiation, inspection, and control of changes and additions to the Physical Plant.
10. The Treasury (cash control) operation concerns itself with the collection of income, the maintenance of income records and the reporting thereupon, the initiation of funds deposit and transfer documents, and under certain limited circumstances the disbursement of funds from approved special activities accounts.

During the 1974-75 academic year, a general Reorganization Plan was begun for Business Office staff responsibilities in order to implement greater responsibilities in the personnel and Budget Control Processes, and for the increase in Physical Plant space which impend.

Table 17 shows new professional staff acquired during the year, as well as changes and promotions in the professional staff.

Table 18 gives a summary of building facilities as of the fall semester. During the year, certain ongoing projects of construction or rehabilitation were continued or initiated. These included: Auditoria Rehabilitation; OSHA Compliance; Greenlawn Hall Remodeling; Northside Hall Remodeling and Rehabilitation. These are in various stages of completion.

Table 19 provides the rectified operating budget by division and department.

Table 20 is a schedule of debt retirement.

INDIANA UNIVERSITY AT SOUTH BEND

1974-75 ANNUAL REPORT

APPENDIX

TABLE 1

INDIANA UNIVERSITY AT SOUTH BEND

STAFF HEADCOUNT AND FTE*; 1974-75

	ACADEMIC					ADMINISTRATIVE								
	IRO1	IRO2	IRO3	IRO4 & 05	TOTAL	AD-PR 00	CN00	LIXX	OA00	AD-PR 90	CL	SM	TE	TOTAL
Administration	2 (2.00)	1 (1.00)			3 (3.00)	2 (2.00)			2 (2.00)	2 (2.00)	15 (14.00)			21 (20.00)
Arts & Sciences Gen.	1 (1.00)		3 (2.17)	9 (2.08)	13 (5.25)		1 (1.00)				11 (10.00)			12 (11.00)
Arts & Humanities	2 (2.00)	8 (8.00)	12 (12.00)	33 (12.43)	55 (34.43)					1 (1.00)				1 (1.00)
Business & Economics	3 (3.00)	7 (7.00)	10 (10.00)	17 (7.38)	37 (27.38)				1 (1.00)	1 (1.00)	3 (3.00)			5 (5.00)
Dental		1 (1.00)	1 (1.00)	15 (5.25)	17 (7.25)						1 (1.00)			1 (1.00)
Education	1 (1.00)	5 (5.00)	14 (13.40)	20 (7.79)	40 (27.19)				1 (1.00)	2 (2.00)	5 (5.00)			8 (8.00)
General Inst. Serv.					0					1 (0.50)	2 (2.00)	2 (2.00)	1 (1.00)	6 (5.50)
Instructional Res.					0			3 (3.00)			7 (7.00)			10 (10.00)
Music		4 (4.00)	1 (1.00)	25 (6.49)	30 (11.49)					1 (1.00)	1 (1.00)			2 (2.00)
Physical & Biol. Sci.	1 (1.00)	10 (10.00)	7 (7.00)	22 (7.88)	40 (25.88)					2 (2.00)				2 (2.00)
Physical Plant					0	2 (1.00)				2 (2.00)	1 (1.00)	32 (32.00)		37 (36.00)
Public & Environ. Aff.	1 (1.00)	2 (1.75)	1 (0.25)	11 (2.59)	15 (5.59)					1 (0.50)	1 (1.00)			2 (1.50)
Social Sciences	3 (3.00)	11 (9.75)	12 (11.75)	9 (4.25)	35 (28.75)									0
Special Programs			1 (1.00)		1 (1.00)						1 (1.00)			1 (1.00)
Student Services			1 (1.00)		1 (1.00)	1 (1.00)			3 (3.00)	2 (2.00)	10 (10.00)			16 (16.00)
Total	14 (14.00)	49 (47.50)	63 (60.57)	161 (56.14)	287 (178.71)	5 (4.00)	1 (1.00)	3 (3.00)	7 (7.00)	15 (14.00)	58 (56.00)	34 (34.00)	1 (1.00)	124 (120.00)
DGTS		1 (1.00)			1 (1.00)						1 (1.00)			1 (1.00)

Source of Data: Indiana University Payroll Tape - General Fund Accounts only, November 1974.

*Figures in parentheses represent the FTE.

TCC/PES, 9-8-75

TABLE 2

INDIANA UNIVERSITY AT SOUTH BEND ADMINISTRATIVE ORGANIZATION

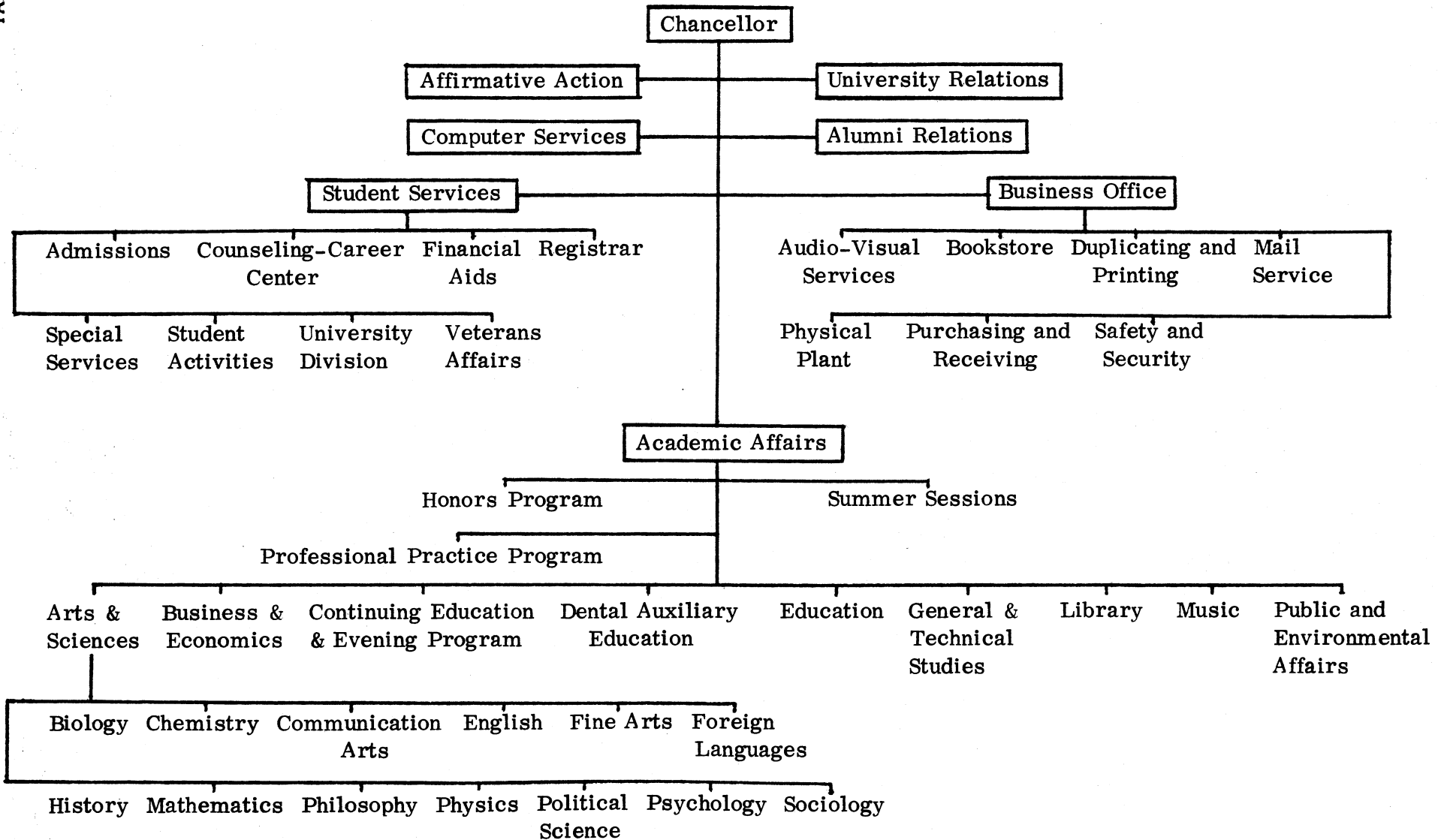


TABLE 3
(Part 1)

HEADCOUNT AND FULL-TIME EQUIVALENT ENROLLMENT; 1974-75
INDIANA UNIVERSITY AT SOUTH BEND

	Total Headcount		
	F-T	P-T	Total
First Summer Session, 1974			
Undergraduates			
Freshman	66	244	310
Sophomore	40	161	201
Junior	84	218	302
Senior	127	273	400
Special	47	Misc. 140	187
Total	364	1036	1400
Graduates	297	680	977
Campus Total	661	1716	2377
Second Summer Session, 1974			
Undergraduates			
Freshman	68	141	209
Sophomore	57	109	166
Junior	55	160	215
Senior	95	270	365
Special	24	Misc. 156	180
Total	299	836	1135
Graduates	321	531	852
Campus Total	620	1367	1987

Source of Data: Student Enrollment Census Report, Fall 1974
and Spring 1975. University Registrar's Summary
Enrollment Charts, Summer 1974

TABLE 3
(Part 2)

HEADCOUNT AND FULL-TIME EQUIVALENT ENROLLMENT; 1974-75
INDIANA UNIVERSITY AT SOUTH BEND (CONTINUED)

	Total Headcount			FTE
	F-T	P-T	Total	
Fall Semester, 1974				
Undergraduates				
Freshman	741	710	1451	
Sophomore	442	416	858	
Junior	363	329	692	
Senior	322	360	682	
Special	25	155	180	
Total	1893	1970	3863	
Graduates	93	1273	1366	
Campus Total	1986	3243	5229	
DGTS Total	34	26	60	
Grand Total	2020	3269	5289	3358
Spring Semester, 1975				
Undergraduates				
Freshman	613	782	1395	
Sophomore	454	428	882	
Junior	357	353	710	
Senior	359	366	725	
Special	36	152	188	
Total	1819	2081	3900	
Graduates	110	1427	1537	
Campus Total	1929	3508	5437	
DGTS Total	14	40	54	
Grand Total	1943	3548	5491	3445

Source of Data: University Registrar's Summary Enrollment Report, Fall 1974
University Registrar's Summary Enrollment Charts, Spring 1975

TABLE 4

STUDENT CREDIT HOUR ENROLLMENT; 1974-75
INDIANA UNIVERSITY AT SOUTH BEND

	Summer 1974		Fall 1974	Spring 1975	Total
	First	Second			
Under-					
graduates					
Part-Time	3413	2744	11493	12684	30334
Full-Time	2371	1854	26881	25611	56717
Total	5784	4598	38374	38295	87051
Graduates					
Part-Time	2084	1666	5096	5779	14625
Full-Time	1823	2001	1056	1229	6109
Total	3907	3667	6152	7008	20734
Campus					
Part-Time	5497	4410	16589	18463	44959
Full-Time	4194	3855	27937	26840	62826
Total	9691	8265	44526	45303	107785
DGTS					
Part-Time	12	90	89	218	409
Full-Time	2	84	455	215	756
Total	14	174	544	433	1165
Campus + DGTS					
Part-Time	5509	4500	16678	18681	45368
Full-Time	4196	3939	28392	27055	63582
Total	9705	8439	45070	45736	108950

Source of Data: Student Enrollment Census

TABLE 5
(Part 1)

GEOGRAPHIC ANALYSIS OF STUDENT ENROLLMENT AT IU; FALL 1974
INDIANA UNIVERSITY SOUTH BEND

County	Total
Allen	7
Brown	1
Cass	3
Clay	2
De Kalb	3
Delaware	2
Elkhart	712
Floyd	1
Foreign	5
Fulton	15
Gibson	3
Grant	2
Greene	1
Hamilton	1
Hancock	1
Harrison	1
Howard	1
Huntington	1
Jasper	1
Knox	2
Kosciusko	18
Lagrange	8
Lake	28
Lawrence	3
La Porte	173
Madison	3
Marion	9
Marshall	194
Miami	1
Montgomery	1
Morgan	1
Newton	1
Noble	5
Out-State	153
Porter	12
Pulaski	4
Putnam	1
Shelby	2
Spencer	1
St. Joseph	3762
Starke	13
Steuben	5

TABLE 5
(Part 2)

County	Total
Sullivan	2
Tippecanoe	3
Tipton	1
Warren	1
Wayne	2
<hr/>	
Total	*5171

*Taken from IUSB printout. Will not match official enrollment figure because of time of access and source of information.

TABLE 6
(Part 1)

DEGREES AWARDED; 1974-75; INDIANA UNIVERSITY AT SOUTH BEND

Programs	Degrees Awarded		
	Men	Women	Total
CERTIFICATE			
Business	10	5	15
Total	(10)	(5)	(15)
ASSOCIATE			
AS Criminal Justice	16	0	16
AS Dental Hygiene	0	16	16
Total	(16)	(16)	(16)
BACCALAUREATE			
BA Biology	13	4	17
BA Chemistry	4	2	6
BA Economics	2	0	2
BA English	3	6	9
BA Fine Arts	2	6	8
BA French	2	1	3
BA German	0	1	1
BA History	8	2	10
BA Mathematics	3	1	4
BA Mathematics/Economics	1	0	1
BA Philosophy	1	1	2
BA Political Science	7	0	7
BA Psychology	4	13	17
BA Sociology	9	15	24
BA Sociology/Psychology	0	1	1
BA Sociology/Spanish	0	1	1
BA Speech and Theatre	1	0	1
BS Business			
BS Accounting	41	5	46
BS Finance	4	0	4
BS General Management	22	2	24
BS General Management and Personnel and Industrial Relations	0	1	1
BS General Management and Marketing	19	2	21
BS Marketing	18	3	21
BS Personnel and Industrial Relations	4	1	5
BS Chemistry	1	0	1
BS Economics	1	0	1
BS Education			
BS Biology	1	2	3
BS Elementary Education	13	68	81
BS English	1	11	12
BS Social Studies	3	11	14
BS Special Education	2	12	14
BS Medical Technology	0	7	7
BS Music	3	3	6
BS Public Affairs	3	1	4
Total	(196)	(183)	(379)

TABLE 6
(Part 2)

DEGREES AWARDED; 1974-75; INDIANA UNIVERSITY AT SOUTH BEND
CONTINUED

Programs	Degrees Awarded		
	Men	Women	Total
MASTER'S			
MS Business	58	0	58
MS Elementary Education	34	166	200
MS Music Education	0	2	2
MS Special Education	5	26	31
MPA Public Affairs	1	0	1
Total	(98)	(194)	(292)
DGTS			
AS Radiologic Technology	4	11	15
Total	(4)	(11)	(15)
GRAND TOTAL	324	409	733

Source of Data: Indiana University at South Bend, Registrar's Office, May 1975
Combined August, 1974, January and May, 1975

INDIANA UNIVERSITY AT SOUTH BEND
 DIVISION OF CONTINUING EDUCATION
Programs and Enrollments 1973-1975

Semester	Courses*		Enrollment		Instructor Contact Hours		Student Contact Hours	
	73-74	74-75	73-74	74-75	73-74	74-75	73-74	74-75
FALL	34	27	565	424	597	383	11,300	9,295
SPRING	19	39	370	702	495	758	7,400	15,256
SUMMER	13	10	197	193	292	272	3,940	4,275
TOTAL COURSES	66	76	1,132	1,319	1,384	1,413	22,640	28,826
TOTAL CONFERENCES	0	8	0	182	0	39	0	1,194
GRAND TOTAL ALL PROGRAMS	74-75	84		1,501		1,452		30,020

*Courses offered with minimum enrollment does not include courses cancelled because of insufficient enrollment.

UNDERGRADUATE ADMISSIONS TABLE 1974 - 1975

Indiana University at South Bend

	<u>FALL 1974</u>	<u>SPRING 1975</u>	<u>*SUMMER 1975</u>			<u>TOTALS</u>
			<u>I</u>	<u>II</u>	<u>Total</u>	
BEGINNERS (Freshmen)	960	370	165	119	284	1614
TRANSFERS	303	200	66	26	92	595
NON-DEGREE	299	205	221	136	357	861
TOTALS	1562	775	452	281	733	3070

* Summer Report is of July 6, 1975.

TABLE 9

SCHOLARSHIPS AND FINANCIAL AIDS: 1974-75

INDIANA UNIVERSITY AT SOUTH BEND

	No. of Awards	Amount of Awards
SEOG	43	\$ 20,096
NDSL	187	106,550
Work Study	63	28,019
BEOG	124	72,649
FILP	225	237,566
Leep Grant	165	55,347
Leep Loan	19	3,914
State Scholarships of Ind.	132	64,512
State Grants of Indiana	36	17,227
IU Scholarships	253	44,071
IU Grants	237	57,262
IU Direct Loan	2	2,100
CDV	112	35,842
Local and Other	32	14,248
Total	1630	759,403

AUTHORIZED IUSB DEGREE PROGRAMS

Master of Public Affairs
Master of Science in Business Administration
Master of Science in Education, Counseling and Guidance
Master of Science in Education, Elementary Education
Master of Science in Education, Secondary Education
Master of Science in Education, Special Education
Bachelor of Arts, Biology
Bachelor of Arts, Chemistry
Bachelor of Arts, Communication Arts
Bachelor of Arts, Economics
Bachelor of Arts, English
Bachelor of Arts, Fine Arts
Bachelor of Arts, French
Bachelor of Arts, German
Bachelor of Arts, History
Bachelor of Arts, Mathematics
Bachelor of Arts, Philosophy
Bachelor of Arts, Physics
Bachelor of Arts, Political Science
Bachelor of Arts, Psychology
Bachelor of Arts, Sociology
Bachelor of Music
 with concentrations in:
 Composition
 Orchestral Instrument
 Organ
 Piano
 Piano Accompanying
 Voice
Bachelor of Music Education
 with concentrations in:
 Choral-General
 Instrumental
 Teaching Area
Bachelor of Science in Business
 with concentrations in:
 Accounting
 Finance
 Management and Administration
 Marketing
 Marketing/Advertising
 Operations and Systems Management
 Personnel and Industrial Relations
 Quantitative Methods
Bachelor of Science in Economics
Bachelor of Science in Education, Elementary Education
Bachelor of Science in Medical Technology
Bachelor of Science in Music and an Outside Field
Bachelor of Science in Public Affairs
 with concentrations in:
 Criminal Justice
 Environmental Policy
 Public Management
 Public Policy

AUTHORIZED IUSB DEGREE PROGRAMS (CONTINUED)

Bachelor of Science in Education, Secondary Education
with certification in:

Biology
Chemistry
English
General Science
German
Mathematics
Physics
Social Studies

Bachelor of Science in Education, Special Education
Associate of Science in Criminal Justice
Associate of Science in Dental Hygiene
Associate of Science in Educational Technology
Associate of Science in Public Affairs
Associate of Science in Radiologic Technology
Certificate in Accounting
Certificate in Dental Assisting
Certificate in Humanities
Certificate in Management and Administration
Certificate in Office Management
Certificate in Sciences
Certificate in Social Sciences

NEW FACULTY, INDIANA UNIVERSITY AT SOUTH BEND

ASSOCIATE PROFESSOR

Roland W. Garrett, Philosophy
Francis X. Nnaggenda, Fine Arts (Visiting)
Bernadine R. Oliphint, Music
Allen M. Parelius, Education

ASSISTANT PROFESSOR

Ernest B. Brandewie, Anthropology
Bonnie W. Hamber, Dental Auxiliary Education
James H. Ryan, Continuing Education

INSTRUCTOR

Christine G. Mosher, Dental Auxiliary Education

LECTURER

Geraldine B. Ameriks, Spanish
John K. Davidson, Sociology
William W. Zimmerman, Education

LIBRARIAN

Wendell Barbour, Head of Reference

ADMINISTRATOR

Ernest B. Brandewie, Ass't. to the Chairman of Arts and Sciences
Roland W. Garrett, Assistant Dean of Faculties
Bonnie W. Hamber, Supervisor of Dental Hygiene
Christine G. Mosher, Assistant Supervisor of Dental Hygiene
Alfred Oppenheimer, Campus Coordinator, Professional Practice Program
James H. Ryan, Director of Continuing Education, and Coordinator of the
Evening Program
Casimir W. Sikora, Research Assistant, Bureau of Business and Economic
Research
Karen White, Counselor, Special Education

TABLE 12

NEW FACULTY; 1974-1975; INDIANA UNIVERSITY AT SOUTH BEND

Prof.	Assoc. Prof.	Ass't. Prof.	Inst- ructor	Visiting Lecturer	Lecturer	Librarian	Adminis- trator	Total
0	3	1	1	0	3	1	3	12

INDIANA UNIVERSITY AT SOUTH BEND

PROMOTIONS

To Assistant Professor

John K. Davidson
Philip A. Horvath
Craig A. Hosterman

To Associate Professor

Gregory R. Baur
Glenn F. Chesnut
Anthony J. Droege
Richard L. Gottwald
Elaine G. Hemley
Paul S. Kochanowski
Lester C. Lamon
Frederick J. Naffziger
J. Vincent Peterson
J. Wesley Robbins
James A. Yutzy

FACULTY GRANTED TENURE BY AUGUST, 1976

Wayne A. Bartholomew
Thomas A. DeCoster
Robert W. Demaree
Wayne F. Echelberger
Jonelle M. Farrow
Robert D. Hamilton
Elaine G. Hemley
Eleanor J. Lyons
George V. Nazaroff
James M. Piowaty
J. Wesley Robbins
Edward J. Specht
James A. Yutzy

INDIANA UNIVERSITY AT SOUTH BEND

LEAVES

Charles R. DuVall, Education, Sabbatical, First Semester
Michael J. Esselstrom, Music, Sabbatical, First Semester
Jonelle M. Farrow, Psychology, Sabbatical, Second Semester
William J. Frascella, Mathematics, Leave of Absence, 1974-1975
Patrick J. Furlong, Education, Sabbatical, Second Semester
Wayne J. Krepel, Education, Sabbatical, Second Semester
Warren Pepperdine, Theatre, Sabbatical, First Semester
Roy E. Schreiber, History, Sabbatical, 1974-1975
Thomas L. Thorson, Political Science, Leave of Absence, Second
Semester

RETIREMENTS

None

CHANGES IN FACULTY STATUS; 1974-1975; INDIANA UNIVERSITY AT SOUTH BEND

Promotions	Tenure	Retirements	Leaves
11	13	0	1 (Leave without pay, 1974-1975) 1 (Sabbatical, 1974-1975) 3 (Sabbatical, 1st semester) 3 (Sabbatical, 2nd semester) 1 (Leave without pay, 2nd semester)

TABLE 15
(Part 1)

INDIANA UNIVERSITY AT SOUTH BEND REPORT
PROJECT ACTIVITY
July 1, 1974 - June 30, 1975

<u>Awarded</u>	<u>Awarded and Withdrawn</u>	<u>Pending</u>	<u>Not Funded</u>	<u>Assumed Not Funded</u>	<u>Withdrawn</u>	<u>Total Activity</u>
\$315,744.00	0	\$153,411.00	\$621,801.00	0	0	\$1,090,956.00

TABLE 15
(Part 2)

REGIONAL CAMPUSES REPORT
PROPOSALS AWARDED
July 1, 1974 - June 30, 1975

SOUTH BEND CAMPUS

<u>Principal Investigator</u>	<u>Project Title</u>	<u>Source</u>	<u>Amount</u>
DeCoster, Thomas	Manpower Programming through Use of a Merit System	Indiana Office of Manpower Development.	\$ 18,445.00
DeCoster, Thomas	An Approach to Public Transportation Development	Indiana Commission for Higher Education, Title I	33,700.00
Demaree, Robert	Major Opera Production and Workshop	Indiana Arts Commission	3,500.00
Dubick, Robert	Special Services Program	U. S. Office of Education	70,000.00
Dudley, Gerald	Indiana Career Resource Center	Penn-Harris-Madison School Corporation	4,509.00
Dudley, Gerald	Production of a Film Documenting the Impact of the Comprehensive Employment and Training Act in Indiana	Office of Manpower Development	15,000.00
Joseph, Thomas	A Study of Coccidia of the Wild Mammals of Indiana with Special Reference to Those in Squirrels and Opposums	Sigma Xi	150.00
Mefford, John	Training of Professional Personnel in the Education of the Handicapped	U. S. Office of Education	16,000.00
Oppenheimer, Alfred	Professional Practice Program	Division of College Support, Department of Health, Education, and Welfare	21,000.00
Ringen, Jon	Self-Reports in Linguistics, Philosophy, and Psychology	National Science Foundation	4,300.00
Ross, Joseph	Instructional Scientific Equipment	National Science Foundation	6,700.00

TABLE 15
(Part 3)

REGIONAL CAMPUSES REPORT
PROPOSALS AWARDED
July 1, 1974 - June 30, 1975

SOUTH BEND CAMPUS
(continued)

<u>Principal Investigator</u>	<u>Project Title</u>	<u>Source</u>	<u>Amount</u>
Ryan, James	Management Training and Development Program for Child Welfare Administrators in Indiana with MBO	U. S. Department of Health, Education and Welfare	\$ 13,266.00
Urbach, Floyd	A Strategy for the Development, Implementation, and Diffusion of Career Education	U. S. Office of Education	67,487.00
Willard, Dean	Library Science Development	Indiana State Library	14,631.00
Wolfson, Lester	Application for Grant for Equipment (Title VI-A, Category I)	U. S. Office of Education	14,000.00
Wolfson, Lester	Application for Grant for Equipment (Title VI-A, Category II)	U. S. Office of Education	2,975.00
Wolfson, Lester	Public Employment Sub-Program	Bureau of Manpower Administration.	10,081.00

TABLE 15
(Part 4)

REGIONAL CAMPUSES REPORT
PROPOSALS PENDING
July 1, 1974 - June 30, 1975

SOUTH BEND CAMPUS

<u>Principal Investigator</u>	<u>Project Title</u>	<u>Source</u>	<u>Amount</u>
Calvin, Richmond	Desegregation Staff Training Institute and Follow-Up Training	Equal Education Opportunities Office	\$ 27,404.00
DeCoster, Thomas	Nutrition Effectiveness Training: A Key to Maternal and Child Health	Indiana State Board of Health	30,247.00
Parelius, Allen	Career Education for Advocates of Handicapped Pupils	U. S. Office of Education	95,760.00

TABLE 15
(Part 5)REGIONAL CAMPUSES REPORT
PROPOSALS NOT FUNDED
July 1, 1974 - June 30, 1975SOUTH BEND CAMPUS

<u>Principal Investigator</u>	<u>Project Title</u>	<u>Source</u>	<u>Amount</u>
Calvin, Richmond	Bi-lingual/Bi-cultural Training Program	U. S. Office of Education	\$ 65,233.00
Calvin, Richmond	Ethnic Heritage Studies - Traveling Road Show	U. S. Office of Education	43,888.00
Gieske, Thomas	Prolactin Control of Osmolar Balance in Amphibians	Sigma Xi	440.00
Gottwald, Richard	Perpectual Factors in Classification Behavior	National Institute of Health	13,121.00
Gottwald, Richard	Perpectual Factors in Classification Behavior	National Science Foundation	15,111.00
Peyser, Joseph	A Multipurpose Media and Communications Center at Indiana University at South Bend	Lilly Endowment, Inc.	450,570.00
Ryan, Patrick	Differential Geometry	National Science Foundation	4,926.00
Stark, Michael Washburn, Michael	To Write Book and Develop Course In Self-Realization	The Rockefeller Foundation	28,512.00

LIBRARY RESOURCES AND SERVICES, SOUTH BEND, 1974/75

COLLECTIONS

Volumes held June 30, 1975 (Exclude microforms)	161,079
Volumes added during year--Gross (Exclude microforms)	21,561
Volumes withdrawn during year (Exclude microforms)	525
Volumes added during year--Net (Exclude microforms)	21,036
Basis of volume count: Physical	
Number of current periodicals	1,521
Reels of microfilm held June 30, 1975	6,728
Number of microcards held June 30, 1975	1,585
Number of microprint sheets held June 30, 1975	43,909
Number of microfiches held June 30, 1975	27,668
Total microform units held June 30, 1975 (add 7,8,9,10)	79,890

PERSONNEL

Number of professional staff, FTE	5
Number of nonprofessional staff, FTE	10

EXPENDITURES

Books, periodicals and other library materials	\$117,601.24
Binding	4,219.88
Total library materials and binding (add 16, 17)	121,821.12
Total salaries and wages, including student assistants' wages	124,124.49
Other operating expenditures (omit fringe benefits)	22,595.95
Total library expenditures (add 18, 19, 20)	\$268,541.56

INTERLIBRARY LOANS

Items loaned: originals 256; photocopies 153; Total	409
Items borrowed: originals 1,475; photocopies 2,698; Total	4,173

TABLE 16
(Part 2)

STATISTICS FOR FISCAL YEAR ENDING JUNE 30, 1975
INDIANA UNIVERSITY AT SOUTH BEND
LIBRARY

CIRCULATION OR USE OF BOOKS:

Total number of recorded loans	49,935
Estimate of unrecorded use of books	26,654

INTERLIBRARY LOANS:

Total volumes borrowed from other libraries	1,475
Total volumes lent to other libraries	256

BOOKS, PERIODICALS AND PAMPHLETS

Number of volumes at end of year	161,079
----------------------------------	---------

MICROFORMS-Cataloged or otherwise accessible:

Reels (Microfilms)	6,728
Cards	1,585
Prints	43,909
Fiche	27,668

OTHER STOCK:

Slides	8,523
Recordings	3,655
Maps	633
Uncataloged Pamphlets	5,300

ACQUISITIONS:

Number of volumes at end of year	161,079
Number of periodical subscriptions	1,470
Number of newspaper subscriptions	51
Number of pamphlets and Annual Reports	10,176
Number of government documents	15,638

Microfilm

Number of titles	244
Number of reels	6,728

Microcard, Microprint, Microfiche

Number of titles	1,286
Number of cards	73,162

Audio-Visual Material

Slides	8,523
Film	1
Film Strips	25
Phonograph Records	3,655
Tapes	309
Audio Cassettes	53

TABLE 16
(Part 3)

ACQUISITIONS (Continued):

Maps	663
Withdrawals	525

CIRCULATION:

Recorded Use	
Two week loans	49,935
One day or overnight	16,751
Periodical charges	6,007
Other	3,279
Estimate of Unrecorded Use of Books	26,654

Reserves	
Room use	13,561
Overnight	1,833
Other (3 & 7 day)	3,683

Interlibrary Loan	
Items obtained from other libraries	1,475
Items lent to other libraries	256
Number of items for which copy substituted	2,698

REFERENCE:

Reference Questions	7,581
Reference Questions	66
Number of Bibliographies Compiled	26

BINDING:

Number of Monographs Bound Books	4
Number of Journals Bound	903
Total Cost of Binding Journals	\$4,219.88

PERSONNEL:

Number of full-time equivalent staff members	
Professional	4+1 FTE
Non-professional	7+3FTE

Total Spent on Student Assistant	\$47,028.35
----------------------------------	-------------

SUPPLIES AND EXPENSES	\$ 8,837.84
-----------------------	-------------

EQUIPMENT	\$13,025.19
-----------	-------------

TRAVEL	\$ 732.92
--------	-----------

NEW PROFESSIONAL STAFF 1974-75

Roland Garrett	Academic Affairs	IR32	\$ 17,000
Ernest Brandewie	Arts and Sciences	IR03	15,000
James Oehler	Audio-Visual	AD90	13,000
David Davenport	Auditorium Services	AD96	11,350
Casimir Sikora	Business and Economics	PR90	8,600
Wendell Barbour	Library	LI03	14,000
James Ryan	SB Evening Division	IR53	20,000

PROMOTIONS

Esther Clark	Audio Visual from CL03 to AD93	\$ 8,400
Althea Snyder	Bookstore from CL05 to AD93	9,000
Delores Blicher	Communication Arts from SMOH to AD93	8,400
Judy Riedel	Continuing Education-Non-Credit Program from CL03 to AD92	8,100

INDIANA UNIVERSITY SOUTH BEND CAMPUS

Gross Square Footage by Building
Projected 1974/75

<u>Building</u>	<u>Square Footage</u>
Northside Hall	278,030
Greenlawn Hall	25,359
Boiler House, Machinery	6,929
Riverside Hall	11,243
1205 Greenlawn Avenue	1,536
1209 S. Greenlawn Avenue	1,820
1916 Mishawaka Avenue	1,588
1920 Mishawaka Avenue	2,551
935 20th Street	1,300 (Estimated)
1924 Mishawaka Avenue	1,226
913 20th Street	1,138
917 20th Street	1,007
921 20th Street	1,797
925 20th Street	1,500 (Estimated)
929 20th Street	892
937 20th Street	1,207
941 20th Street	1,414
945 20th Street	1,899
1910 Mishawaka Avenue	3,818
1001 20th Street	1,390
1005 20th Street	1,403
1009 20th Street	2,150
1013 20th Street	1,344
	<hr/>
TOTAL SQUARE FOOTAGE	352,541

Source: Bureau of Facilities Studies
(Except 935 & 925 20th Street)

INDIANA UNIVERSITY AT SOUTH BEND
SUMMARY OF 1974-75 BUDGET, EXPENDITURES AND ENCUMBRANCES
As of June 30, 1975

TABLE 19
(Part 1)

Account Title	Account Number	Budget July 1, 1974	Encumbrances & Expenditures	Net Budget Transfer	Balance
Transfers Out-Building Fees	07-099-02	\$ 751,597.00	\$ 709,653.00	\$ -0-	\$ 41,944.00
Chancellor	07-650-00	92,196.00	119,622.45	28,473.19	1,046.74
Academic Affairs	07-650-01	93,175.00	91,088.68	764.61	2,850.93
Business Office	07-650-02	206,699.00	227,842.65	26,429.12	5,285.47
Special Expenses	07-650-15	-0-	17,505.04	17,533.04	28.00
Student Services	07-650-20	161,122.00	151,385.95-	7,343.19	2,392.86
Match Student Loans	07-650-24	-0-	3,444.43	3,444.43	-0-
Fee Credit Scholarships	07-650-25	38,500.00	35,880.80	-0-	2,619.20
Merit Scholarships	07-650-26	56,500.00	50,372.50-	3,908.64	2,218.86
Ceremonies	07-650-30	4,972.00	4,672.34	-0-	299.66
University Division	07-650-39	46,671.00	47,001.06	510.39	180.33
Life-Medical	07-650-40	3,499.00	614.89-	3,071.00-	186.89
TIAA-CREF-OASI	07-650-41	19,029.00	129.40-	17,929.42	970.18
Unemployment Compensation	07-650-42	2,000.00	-0- -	2,000.00	-0-
Fee Courtesy	07-650-43	3,500.00	3,997.50	497.50	-0-
Ins.-Cas., Surety, Liability	07-650-44	1,800.00	3,958.00	2,158.00	-0-
Workman's Compensation	07-650-45	2,000.00	-0- -	2,000.00	-0-
Audio Visual	07-650-64	25,660.00	47,460.84	21,719.88-	80.96
Auditorium Services	07-650-67	-0-	7,955.81	6,728.66-	1,227.15
Computer Services	07-650-70	86,879.00	101,114.36	13,635.13-	600.23
Mail Services	07-650-75	38,585.00	39,943.42	1,805.50	447.08
Evening Division	07-650-77	33,718.00	35,996.29	3,479.01	1,200.72
System Service Cost Allocation	07-650-78	205,943.00	205,943.04	.04	-0-
RCA Service Cost Allocation	07-650-79	313,819.00	313,818.96-	.04	-0-
Alumni Services	07-650-81	16,912.00	17,439.18	902.00	374.82
A & S General	07-651-00	172,345.00	216,973.80	47,617.32	2,988.52
Biology	07-651-06	129,413.00	133,536.92	4,743.06	619.14
Chemistry	07-651-13	101,050.00	101,281.18	630.18	399.00
English	07-651-23	192,256.00	170,014.27-	20,739.00	1,502.73
Fine Arts	07-651-26	81,404.00	81,043.36-	101.25	259.39
Foreign Languages	07-651-28	92,017.00	92,533.26	1,743.87	1,227.61
History	07-651-36	168,999.00	155,331.76-	12,653.51	1,013.73
Mathematics	07-651-50	148,308.00	134,707.62-	13,576.95	23.43
Music	07-651-54	158,712.00	176,722.16	20,885.70	2,875.54
Philosophy	07-651-61	65,098.00	68,418.47	3,329.08	8.61

INDIANA UNIVERSITY AT SOUTH BEND

-2-

TABLE 19
(Part 2)

Account Title	Account Number	Budget July 1, 1974	Encumbrances & Expenditures	Net Budget Transfer	Balance
Physics	07-651-62	\$ 46,827.00	\$ 47,701.67	\$ 985.48	\$ 110.81
Political Science	07-651-64	93,679.00	88,440.62-	4,683.00	555.38
Psychology	07-651-67	141,188.00	149,454.39	8,285.28	18.89
Sociology	07-651-74	104,598.00	109,658.47	5,270.09	209.62
Communication Arts	07-651-76	113,659.00	119,076.74	4,848.30-	569.44
Business & Economics	07-652-00	505,438.00	516,144.39	12,131.44	1,425.05
Public & Environmental Affairs	07-652-50	84,522.00	113,348.00	28,877.33	51.33
Education	07-653-00	526,566.00	543,520.16	17,022.90	68.74
Dental	07-654-00	99,616.00	109,395.92	10,111.94	332.02
General and Technical Studies	07-655-25	51,920.00	46,834.47-	3,743.62	1,341.91
Summer Sessions	07-656-00	246,991.00	290,035.66	33,994.42-	9,050.24
Faculty Fellowships	07-656-50	-0-	35,300.00	35,300.00	-0-
Library	07-657-00	212,887.00	278,450.12	66,110.46	547.34
Physical Plant-Building Services	07-658-00	193,391.00	198,663.51	7,691.30	2,418.79
Physical Plant-Building & Grounds	07-658-30	279,378.00	328,653.78	44,785.96-	4,489.82
Safety & Security	07-658-50	22,056.00	24,500.39	3,354.00	909.61
Merit Reserve	07-659-10	19,585.00	-0-	19,336.00	249.00
Contingencies	07-659-13	58,725.00	2,325.00-	56,400.00	-0-
Faculty Research	07-659-17	-0-	-0-	-0-	-0-
Academic Additions & Adjustments	07-659-50	69,668.00	3,000.00-	64,136.00	2,532.00
Total		\$ 6,385,072.00	\$6,571,906.68	\$254,176.99	\$ 67,342.31

INDIANA UNIVERSITY AT SOUTH BEND
 SCHEDULE OF INCOME AND EXPENDITURES FOR PHYSICAL FACILITIES
 1956-57 through 1984-85
 TABLE OF DEBT RETIREMENT

ACTUAL

<u>Fiscal Year</u>	<u>Income</u>	<u>Expenditures</u>	<u>Cumulative Balance</u>
1956-57	20,308.00	-0-	20,308.00
1957-58	24,084.00	-0-	44,392.00
1958-59	25,856.00	-0-	70,248.00
1959-60	61,151.00	62,676.67	68,722.33
1960-61	63,631.00	197,230.60	(64,877.27)
1961-62	83,107.00	66,042.13	(47,812.40)
1962-63	98,022.70	142,097.02	(91,886.72)
1963-64	119,182.48	153,050.00	(125,754.24)
1964-65	148,971.18	204,491.71	(181,274.77)
1965-66	209,760.33	700,992.72	(672,507.16)
1966-67	226,784.65	357,748.29	(803,470.80)
1967-68	216,973.38	463,920.35	(1,050,417.77)
1968-69	254,703.35	500,225.47	(1,295,939.89)
1969-70	592,226.09	561,904.01	(1,265,617.81)
1970-71	722,008.00	492,672.61	(1,036,282.42)
1971-72	794,500.00	608,575.37	(850,357.79)
1972-73	757,743.00	220,641.20	(313,255.99)
1973-74	794,493.50	353,974.52	127,262.99
1974-75	709,653.00	563,190.87	273,725.12

PROJECTION

1975-76	769,300.00	744,633.75	298,391.37
1976-77	779,569.00	882,621.55	195,338.82
1977-78	785,827.00	969,101.05	12,064.77
1978-79	784,854.00	968,892.25	(171,973.48)
1979-80	776,909.00	968,344.15	(363,408.63)
1980-81	774,284.00	903,952.75	(493,077.38)
1981-82	757,764.00	902,726.05	(638,039.43)
1982-83	743,491.00	903,770.05	(798,318.48)
1983-84	718,886.00	901,695.10	(981,127.58)
1984-85	698,488.00	901,890.85	(1,184,530.43)