

SLIS Network

INDIANA UNIVERSITY
SCHOOL OF LIBRARY
AND
INFORMATION SCIENCE
Alumni Magazine
Spring 2012
Vol. 50, No. 1

Connection



The SLIS Alumni Board meets twice a year to help think about the goals of the school, about the career paths for current students, and about ways to help alumni stay connected. This photo is from the Fall 2011 SLIS Alumni Board Meeting. Pictured here left to right are: Howard Rosenbaum, Debora Shaw, Jennifer Gentry, Vicky Martin, Tomas Lipinski, Lorelle Brown-Swader, Sarah Burton, and Jacob Nadal.

This magazine is published twice a year by the School of Library and Information Science and its alumni association, in cooperation with the Indiana University Alumni Association, to encourage alumni interest in, and support of, SLIS.

School of Library and Information Science

Debora Shaw
Dean

Howard Rosenbaum
Editor, Associate Dean

Sarah Burton
SLIS Alumni Events Director

Rhonda Spencer
Project Manager

Vicky Martin, IU Foundation
SLIS Development

Asia Harman
Designer

IU Alumni Association

Jennifer Gentry
Alumni Relations Liason

Keep in Touch:

School of Library and Information Science
1320 E. 10th Street, LI 011
Bloomington, IN 47405-3907

slisnews@indiana.edu
812.855.2018 or 888.335.7547
www.slis.iu.edu

Contents

- 3 Dean's Note
- 4 Faculty News
- 8 SLIS Class Notes
- 11 Feature: Connection
- 15 SLIS Alumni Board
- 16 Donors

You are Invited:

SLIS plans Alumni Receptions at a variety of professional association meetings – and with help and support from SLIS graduates. Below is a list of events that are being planned.

For updates – see the SLIS website:
www.slis.indiana.edu/alumni/events.php

Medical Library Association – Seattle, WA – Sunday, May 20, 6:00–7:00 pm

ALA, Anaheim, CA – Sunday, June 24, 5:30–7:30 pm

AALL, Boston – Monday, July 23, 6:00–7:30 pm

SAA, San Diego – Thursday, Aug 9, 7:30–9:00 pm

JCLC, Kansas City, MO, Dinner – Thursday, Sep 20, 7:00 pm

ILA, Peoria, Brunch for SLIS Alumni – Thursday, Oct 11, 8:00–10:00 am

ASIST, Baltimore, MD – Tuesday, Oct 30, 6:00–7:30 pm

ILF, Indianapolis – Nov 12–14, 2012, TBA



SLIS Alumni Reception at the 2011 ALA Conference in New Orleans.

Watch for future SLIS Alumni Events on our website:
www.slis.indiana.edu/alumni/events.php



Debora Shaw
Dean
SLIS Bloomington and Indianapolis
Professor of Library and Information Science

Dean's Note

Making Connections for SLIS

William Davidow's recent book, *Overconnected: The Promise and Threat of the Internet* (Delphinium, 2011) criticizes the hyper-interdependencies the Internet affords. Davidow, a former Intel vice president and now Silicon Valley venture capitalist, is not making the "drinking from a fire hose" criticism for information overload. Rather, he argues that the Internet's high connectivity increases positive feedback, allowing local concerns to become global. This leads to, for example, economic bubbles and decisions made in haste, based on what "everyone" appears to be doing. The uncritical acceptance of the recent global financial crisis was not caused by the Internet, Davidow explains, but our great interconnectedness was "gasoline to the flames." He suggests economic and legal controls to put the brakes on overheated speculation.

Beyond social and legislative restructuring, however, it's possible that more connectedness, combined with intelligence, could also alleviate some of the problems Davidow depicts. As intelligent participants in an interconnected world, we can take responsibility for choosing to seek and make use of information from novel perspectives. This is the essence of learning, the focus of a student's life.

At the start of the fall and spring semesters I welcome new SLIS students and encourage them to begin working immediately on their professional networks. Finding and developing contacts with fellow students and practicing professionals can make one's time at SLIS especially rewarding. And failure to make the most of opportunities while in school can result in an education evidenced only by a transcript, unaccompanied for the transformation of mind and outlook that should be the hallmarks of graduate professional education.

Over the past year I have heard from many SLIS alumni and other information professionals with offers to help advise / prepare / encourage / mentor the next generation. Librarians from the Indiana State Library provided a specific example of how all SLIS alumni can help: In addition to encouraging capable and enthusiastic students to attend SLIS, look for ways to enlighten others about what information professionals do in the 21st century. Opportunities to make a difference abound, but prospective students should hear about the range of skills and flexibility of approach required in our fast-changing world. Analysis, understanding, and communication skills are essential and new students should not discover this after they enroll.

By starting their professional networks early, SLIS students can supplement their courses with perspectives from mentors and colleagues who live the lives for which students are preparing. Alumni help students move from being unconnected to being intelligently connected. An important part of my pitch to those incoming students is the value and strength of the SLIS alumni network. Here's a recent snapshot.

<http://www.slis.indiana.edu/alumni/map/bycities.php>

Check out the video and watch the network grow:
<http://www.youtube.com/watch?v=oupigKfac2s>





Associate Professor **Rachel Applegate** participated in two accreditation activities: a Higher Learning Commission panel that visited Cedarville University, Ohio and an External Review Panel for the American Library Association Committee on Accreditation in October. She presented, "Finding your way with questions: Interviewing tips" and "Pointing Evaluation at your purpose: Designing a library-wide evaluation plan" at the Indiana Library Federation (ILF) Annual Conference in Fort Wayne, IN in November.

Katy Börner, Victor H. Yngve Professor of Information Science was elected a Fellow of the American Association for the Advancement of Science (AAAS) in November. Her

book, *Atlas of Science*, was selected as the Best Information Science Book of the Year at the Annual Meeting of the American Society for Information Science and Technology (ASIST) Annual Meeting in October in New Orleans, LA. With W. Glänzel, A. Scharnhorst, and P. van den Besselaar, she edited a special section of *Scientometrics* "Modeling science: studying the structure and dynamics of science" in October and with H. Guo and doctoral student Scott Weingart, published "Mixed-indicators model for identifying emerging research areas" in the same issue. She published a book chapter "Network science: theory, tools and practice" in *Leadership in Science and Technology: A Reference Handbook*. She published "Mapping the development of scientometrics: 2002 to 2008" in the *Journal of Library Science In China* with Y. Chen and S. Fang. She is a co-principal investigator on several grants including "Monitoring, modeling & forecasting tools for fostering innovative S&T workforce" from the National Institute of General Medical Sciences and "Platform for the analysis and visualization of science data" from Net Solutions Corporation.

Börner organized the "JSMF Workshop on Science Maps in Education" at Indiana University, Bloomington in June. She was a Visiting Scientist at Eidgenössische Technische Hochschule Zürich, Switzerland in June and gave several presentations including "Building a science observatory" at FuturiCT's Living Earth Platform and

Interactive Observatories Meeting and "Mapping science in support of knowledge access, navigation, and utilization" at the FuturiCT Meeting on the Innovation Accelerator. With doctoral student Angela Zoss, she presented "Mapping interactions within the evolving science of science and innovation policy community" and led a half-day pre-conference tutorial "Sci2: A tool of science and science research and practice" at the 13th International Society for Scientometrics and Informetrics Conference in Durban, South Africa in July. She gave a keynote address "Mapping scientific discovery through advanced computing" at the Scientific Discovery through Advanced Computing Program in Denver, CO. in July.

She gave four presentations in August, "Science of science maps, tools, and research" at the National Academy of Sciences, "Building a science observatory: Data, tools, and maps" at Science/AAAS, "Insightful visualizations of national researcher networking data" and, with C. Tank and C. Kong, "Visualization in VIVO: A case study in how VIVO data and technology" both at the Second Annual VIVO Conference in Washington, DC. With V. Larivière, she organized the JSMF Workshop on Standards for Science Metrics, Classifications, and Mapping at Indiana University in August. She presented "Impact Evaluation: Data, tools, analysis & visualization" at the EERE and ARPA-E Workshop on Measuring and Communicating Program Impacts, in Washington, DC, "International, interdisciplinary plug-and-play macroscopes" at From OpenSHAPA to Open Data Sharing in Arlington, VA and "Envisioning scholarly data" at the Compatible Database Initiative Meeting, in New York City, all in September. Also in September, her Places and Spaces Exhibit opened at the University of North Texas, Denton, TX during which she gave a series of talks. In October, she presented "Monitoring, modeling & forecasting tools for fostering innovative S&T workforce" at the Scientific Workforce Analysis and Modeling meeting, both in Washington, DC and, with J.R. Biberstine led a tutorial on "Sci2" at Sci2: A Tool for Science of Science Research and Practice, in Arlington, VA. Also in October, she co-organized the JSMF Workshop on Artists Envision Science & Technology with J.D. Talasek at the NSF in

Arlington, VA. She presented the iSchool Faculty Lecture, "Mining, mapping, and accelerating science and technology" at the University of Pittsburgh, Pittsburgh, PA, a webinar *Envisioning Science and Technology for ASIST* and organized the JSMF Workshop on Science Maps in Education, at Indiana University, all in November.

Associate Professor **Hsin-liang Chen** presented "Humanities higher education in the YouTube era," at the Ninth International Conference on New Directions in the Humanities in Granada, Spain in June. With R.A. Moeller, he presented "An analysis of online news comments on children's racial perceptions in the U.S." and participated in a panel, "Digital content creation: A global view of curriculum design" at the ASIST Annual Meeting in New Orleans, LA in October.

Assistant Professor **Andrea Copeland** published "Analysis of public library users' digital preservation practices in the *Journal of the American Society for Information Science and Technology* in July. She gave a presentation "To present our cultural heritage: A framework of motivation for sharing digital images" at the Ninth International Conference on New Directions in the Humanities in Granada, Spain in June. She was a presenter in a workshop sponsored by SIG-VIS, "Hands on with the state of the art," at the ASIST Annual Meeting in October.

Blaise Cronin, Rudy Professor of Information Science is Editor-in-Chief of the *Journal of the American Society for Information Science and Technology*, and published three editorials, "Peer review" in issue 62(7), "The intelligence disconnect" in issue 62(10) and "Don't confuse accreditation with reputation" in issue 62(12). He edited and wrote the introduction to the recently published *Annual Review of Information Science and Technology*, volume 45. He was appointed to the editorial board of the *Journal of Intelligence Studies in Business* and re-appointed a Honorary Visiting Professor at the City University, London UK. Cronin delivered the keynote address, "...

And into the zone of quasi-rationality", at the DReAM Project Launch for the Library and Information Research Council at The British Library, London, UK in July. He gave two invited talks in December, "Never too many cooks: The evolving nature of scientific authorship" at University College Dublin, Dublin, Ireland in December and "What it means to be an author" at the University of Ulster, Belfast, Northern Ireland.



Associate Professor and MLS program director **Ronald E. Day**, published "From advocates to terrorists: Ideology, the state of exception and state of emergency, and political ethics" in the *Journal of Information Ethics* and "The aleatory encounter and the common name: Reading Negri reading Althusser" in the *Journal of Communication Inquiry*. He presented a keynote speech, "The episteme of information and the place of need" at the Post-Graduate Program in Information Sciences at the Universidade Federal Fluminense in Rio de Janeiro, Brazil in September. He participated in two panels, the "Fundamental research questions in information science" and "The future of information history," at the ASIST Annual Meeting in October.

community structure in social tagging: the TTR-LDA-Community model" and, with Cassidy Sugimoto and Assistant Professor Staša Milojević, "The cognitive structure of library and information science: Analysis of article title word," both in the *Journal of the American Society for Information Science and Technology*. She published "Mining relational paths in integrated biomedical data" in *PLoS One* with B. He, J. Tang, H. Wang, Y. Sun, J. Shin, B. Chen, G. Moorthy, J. Qiu, P. Desai and D. Wild and "Semantic inference using chemogenomics data for drug discovery", in *BMC Bioinformatics* with Q. Zhu, Y. Sun, M.S. Laijiness, and D. Wild. She published a book chapter "Social networks and semantics" in *Social Computing Theory and Practice: Interdisciplinary Approaches* with I. Toma, J. Caverlee, Associate Professor Elin Jacob, Erja Yan and Staša Milojević. She was appointed to the editorial boards of the *Journal of Information Science* and the *Journal of Informetrics* and named to the Distinguished Reviewers Board for *Scientometrics*. In June, she gave an invited talk, "Semantically modeling of scientist: the VIVO ontology" at the Library for the Chinese Academy of Sciences, Remin University, Peking University and the Chinese Science and

in Durban, South Africa. She was the program co-chair for the "Workshop on mining data semantics," at the 17th ACM SIGKDD Conference on Knowledge Discovery and Data Mining in San Diego in August. She gave an invited talk, "Modeling network of scientists," at the Mayo Clinic in Rochester, MN in November.

Associate Professor **Hamid Ekbia** published a book chapter "Patterns of movement in space: An agent-based approach" in *Agent-based modeling and GIS*. He presented "(Dis-)Tasteful machines? Aesthetic cognition and the computational turn in aesthetics" with W. York at the Annual Conference of the International Association of Computing and Philosophy in Aarhus, Denmark and "Inverse instrumentality: How technologies objectify patients and players" at the 48th Annual Colloquium of the European Group on Organizational Studies in Gothenburg, Sweden, both in July. With H. Sawhney, he presented "Matter of metaphor: The dynamics of technological change" at the Annual Meeting of the Society for Social Studies of Science in Cleveland, OH in November. He gave an invited keynote "Digital discipline: The active complicity of the modern subject" to the Information Systems and Innovation Group at the London School of Economics and Political Science in London, UK and presented "Medicine, machines, and mediations: Coordination of health work" at the Workshop on Personal Health Records and Patient-Centered Infrastructures in Trento, Italy, and, with W. York, presented "Analogy, aesthetics, and affect: What can HCI designers learn from AI" at *Beyond AI: Interdisciplinary Aspects of Artificial Intelligence* in Pilsen, Czech Republic, all in December. With Associate Professor Howard Rosenbaum, he received an NSF grant for and co-organized the 2012 Doctoral Colloquium held in Toronto Canada in January. He was also co-principal investigator on two grants, one from IU and one from the Agency for Healthcare Research and Quality. He was on the program committees for four conferences: iConference 2012, in Toronto, CA, Philosophy and Theory of Artificial Intelligence in Thessaloniki, the First International Conference on Health Informatics, Washington D.C. and Social, Computing - Social Cognition



Faculty, students and alumni at the SLIS Alumni Reception, American Society of Information Science and Technology Conference in New Orleans, October 2011.



Assistant Professor **Ying Ding** published "Community detection: topological vs. topical", in the *Journal of Informetrics*. With D. Li Assistant Professor Cassidy Sugimoto, B. He, J. Tang, doctoral student Erja Yan, N. Lin, Z. Qin, Z. and T. Dong, she published "Modeling topic and

Technology Information Center, all in Beijing, China. In July, she presented two papers, "The effects of dangling nodes on citation networks" with Erja Yan and "Knowledge discovery in research communities: Matching publication clusters on shared author and word relations" with Erja Yan and Elin Jacob, at the 13th International Conference on Scientometrics and Informetrics

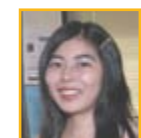
-Social Networks and Multiagent Systems Symposium, AISB/IACAP World Conference, in Birmingham, UK.

Associate Professor **Pnina Fichman**



published "A comparative assessment of answer quality on four question answering sites" in the Journal of Information Science. She co-organized the minitrack "Social Theory in Information Systems" with Howard Rosenbaum at the America's Conference for Information Systems in Detroit in August. With Rosenbaum, she co-organized the 7th Annual Social Informatics Research Symposium, "Bridging the Gulf: The Social Analysis of Computing in Society and the Workplace" at the ASIST Annual Meeting in October. She was the SIG Research program organizer for a session held at the 2012 Association for Library and Information Science Education in Dallas in January. She is the Secretary/Treasurer of the SIG-Cross-Cultural Research in Information Systems in the Association for Information Systems and co-chair, with Rosenbaum, of SIG-Social Informatics in ASIST.

Associate Professor **Noriko Hara**



presented "On the transmission of tacit skills in science: Observations of Japanese doctoral students" with M.A. Ynalvez and Y. Kamo at the American Sociological Association Annual Meeting in Las Vegas, NV in August. She participated in the 7th Annual Social Informatics Research Symposium, "Bridging the Gulf: The Social Analysis of Computing in Society and the Workplace" as a discussant for the award winning SIG-SI papers and as a panelist in the session "Opportunities and

challenges of conducting large scale social informatics research" at the ASIST Annual Meeting in October. She was also on the program committee for this conference. She presented three papers, "Qualitative study of becoming a scientist in Japan" with M.A. Ynalvez and Y. Kamo and "Mentor-mentee interaction, laboratory social environment and scientific productivity" with M.A. Ynalvez, J.C. Kilburn and R.A. Ynalvez and "Scientific productivity in East Asian research systems: A neo-Durkheimian perspective" with S.M. Aguilar, M.A. Ynalvez, J.C. Kilburn, R.A. Ynalvez, K. Chen and Y. Kamo at the Annual Meeting of the Society for Social Studies of Science, Cleveland, OH in November.

Professor **Susan Herring**, Ph.D. Program



Director, published "Cultural bias in Wikipedia articles about famous persons" with Dr. Eva Callahan, SLIS doctoral graduate, in the Journal of the American Society for Information Science and Technology. With S. Kapidzic, she published "Gender, communication, and self-presentation in teen chatrooms revisited: Have patterns changed?" in the Journal of Computer-Mediated Communication. She published a book chapter "Commentary: Contextualizing digital discourse" in Digital Discourse: Language and the New Media and edited Computer-Mediated Conversation. Part II of a two-part special issue of Language@Internet. She was appointed to the editorial board of Discourse, Context & Media. In October, Dr. Herring gave a keynote talk via distance technology "Gender and computer-mediated language: Then and now," at the Language and Gender Workshop in Beijing China. She presented a paper, "Mode choice in multimodal comment

threads: Effects on participation and language use" at Internet Research 12.0: Performance and Participation and to the Departments of Communication and Computing and Information Science, at Cornell University, both in October.

Associate Professor **Marilyn Irwin**



attended the American Association of School Librarians Conference in Minneapolis in October. She presented "People with disabilities: An odyssey of accessible ebooks" at the ILF Annual Conference in Fort Wayne, IN in November.

Associate Professor **Elin Jacob** published a



book chapter "Social networks and semantics" in Social Computing Theory and Practice: Interdisciplinary Approaches with I. Toma, J. Caverlee, Ying Ding, Erja Yan and Stasa Milojevic. She presented "Knowledge discovery in research communities: Matching publication clusters on shared author and word relations" with Ying Ding and Erja Yan at the 13th International Conference on Scientometrics and Informetrics in Durban, South Africa in July. With doctoral student Guo Zhang, she presented "Reconceptualizing cyberspace: 'Real' places in digital space" at the 3rd International Conference of Science in Society in Washington D.C in August and "Places for digital ecosystems, digital ecosystems in places" at the ACM International Conference on Management of Emergent Digital EcoSystems in San Francisco, CA in November.



Tomas Lipinski, Professor and Executive Associate Dean (IUPUI), is a content editor

for a series published by Neal-Schuman Publishers, Inc., "The Legal Advisor for Librarians, Educators, & Information Professionals." He was an invited participant for public meetings at the U.S. Copyright Office in Washington, D.C. in June. He presented at two workshops "Copyright, Fair Use and the Public Library," sponsored by the Pasadena Public Library, Pasadena, CA in September and "Copyright and ILL and Beyond" held by the South Central Regional Library Council, Binghamton, NY in October. He led a seminar "Using Copyright to Your Advantage!" for the South Central Regional Library Council at Broome County Public Library, Binghamton, New York in October. He presented "Managing Protest and political rights in the public library" at the Wisconsin Library Association Annual Conference, Milwaukee, WI in November and "Understanding and applying fair use in the library setting" and "Privacy and the Indiana library: Navigating challenges and opportunities in the current decade" at the ILF Annual Conference, Fort Wayne, IN also in November.



Assistant Professor **Xiaozhong Liu** gave three talks in China, "Knowledge based information retrieval" at the China Academic Libraries

forum and Advanced Digital Library Seminar in Chengdu, "Natural language processing and text mining for digital libraries" at Zhejiang University in Zhejiang and "Knowledge generation and retrieval for scientific publications" at the Chinese Academy of Sciences in Beijing, all in June. With doctoral student Craig Finlay, M. Johnson, master's student Vincent Malic, C. Hank, doctoral student Chaoqun Ni and Cassidy Sugimoto, he presented "Exploring connections of the biblioblogosphere" at the ASIST Annual Meeting in October.



Assistant Professor **Staša Milojević** published "The cognitive structure of library and information science: Analysis of article title words" with Cassidy Sugimoto, Erja Yan and Ying Ding in the Journal of the American Society for Information Science and Technology. With M. Francisco and S. Sabanovic, she published a "Conference models to bridge micro and macro studies of science" in the Journal of Artificial Societies and Social Simulation. She published a book chapter "Social networks and semantics" in

Social Computing Theory and Practice: Interdisciplinary Approaches with I. Toma, J. Caverlee, Ying Ding, Elin Jacob and Erja Yan. She presented "Cognitive domains of disciplines – a new method for measuring domain's size and evolution" at the 13th International Conference on Scientometrics and Informetrics in Durban, South Africa in July. She is a co-principal investigator on a grant "Fifty years of robotics history" from the Institute for Electrical and Electronics Engineers and was appointed to the Distinguished Reviewers Board of Scientometrics. She was a co-organizer with Cassidy Sugimoto of the Metrics 2011 Symposium on Informetric and Scientometric Research, sponsored by the Special Interest Group for Metrics at the ASIST Annual Conference in October. At the workshop, she presented "Citation practices in the field of library and information science." At the conference, she participated in a panel on "Using information obtained through informetrics to address practical problems and to aid decision making." With S. Sabanovic and P. Asaro, she presented "50 years of robotics through narratives and networks" at the Society for the History of Technology joint workshop in Cleveland, OH in November.

Associate Professor **Alice Robbin**,



Co-Director of the Rob Kling Center for Social Informatics, presented "ICTs and health: Complexity redux" and "Some musings on the clichés and paradoxes of the 'Arab Spring': The social web and its implications" as part of two panels at the IADIS Multi Conference on Computer Science and Information Systems in Rome in July. She was on the program committee for this conference and for the International Conference on Wireless Communications, Networking and Mobile Computing in China in September. Also in September, she presented "Antecedents of the digital divide at the macro level" at the Mediterranean Conference for Information Systems in Cyprus.

Associate Professor and Associate Dean



Howard Rosenbaum received the 2011 Thomson Reuters Outstanding Information Science Teacher Award at the ASIST

Annual Meeting in October. He co-organized the minitrack "Social Theory in Information Systems" with Pnina Fichman at the America's Conference for Information Systems in Detroit in August and the 7th Annual Social Informatics Research Symposium, "Bridging the Gulf: The Social Analysis of Computing in Society and the Workplace" at the ASIST Annual Meeting in October. At this conference, he participated in the panel "Preparing for the academic job market: An interactive panel for doctoral students," co-organized and moderated by Cassidy Sugimoto. He was on the Program Committee for the Workshop on Social Informatics and Social Computing at SISCO 2011 and the 10th Annual Workshop on HCI Research in the MIS Discipline, held during the International Conference on Information Systems 2011 annual meetings. He is co-Chair of with Pnina Fishman of SIG-Social Informatics in ASIST. With Hamid Ekbia, he received an NSF grant for and co-organized the iConference 2012 Doctoral Colloquium held in Toronto Canada in January.

Professor **Debora Shaw** was



appointed the Dean of the School of Library and Information Science. She participated in a panel on "Using information obtained through informetrics to address practical problems and to aid decision making" at the ASIST annual meeting in October.

Assistant Professor **Cassidy Sugimoto**,



published four articles in the Journal of the American Society for Information Science and Technology; "The cognitive structure of library and information science: Analysis of article title words" with Staša Milojević, Erja Yan and Ying Ding, "Academic genealogy as an indicator of interdisciplinarity: An examination of dissertation networks in Library and Information Science" with Chaoqun Ni, T.G. Russell and B. Bychowski, "Institutional interactions: Exploring the social, cognitive, and geographic relationships between institutions as demonstrated through citation networks" with Erja Yan and "Modeling topic and community structure in social tagging: the TTR-LDA-Community model" with D. Li, Bing He, J. Tang, Erja Yan, N. Lin, Z. Qin and T. Dong. She is the principal or co-principal investigator on grants from the NSF, ALISE,

Dr. Jean Preer to Retire July 31, 2012

Professor **Jean Preer** plans to retire at the end of July, 2012. Dr. Preer joined the IU School of Library and Information Science in fall 2002. In her years at SLIS, she has been recognized for both teaching and research excellence. In 2006 she received the Award for Teaching Excellence in Library and Information Science from the Association for Library and Information Science Education (ALISE). In 2007, her essay, "Promoting Citizenship," won the Justin Winsor Prize from the Library History Round Table of the American Library Association, and in 2009, her book, **Library Ethics**, won the Greenwood Publishing Group Award for Best Book in Library Literature. She was named a 2012 Fellow at the Center for Information Policy Research at the University of Wisconsin-Milwaukee.

As a SLIS faculty member, Dr. Preer has presented her research at conferences across the United States and in Bulgaria, Australia, and China, where she represented ALISE at the 90th anniversary of the **founding of the library school at Wuhan University**. In summer 2009, she traveled to **Eldoret, Kenya**, for a month of learning and service, as part of a Fulbright-sponsored group of IUPUI faculty and students and Indianapolis Public Schools teachers.



OCLC and IU. She presented “Degree, closeness, and betweenness: Application of group centrality measurements to explore macrodisciplinary evolution diachronically” with Chaoqun Ni and J. Jiang at the 13th International Society for Scientometrics and Informetrics (ISSI) Conference in Durban, South Africa in July. At the ASIST Annual Meeting in October, she organized and moderated a panel, “Preparing for the academic job market: An interactive panel for doctoral students” and moderated a panel “Using information obtained through informetrics to address practical problems to aid in decision making.” With Staša Milojević, she organized a post-conference workshop “Metrics 2011: Symposium on Informetric and Scientometric Research.” She also attended the ASIST Board Meeting and was the Chapter Assembly Director and the SIG/ED Programming Officer.

information technology standardization” in the Literary and Linguistic Computing with W.E. Hooper. He was a member of programming committee for the 2011 Digital Humanities conference at Stanford University in June and presented “The story of TILE (Text Image Linking Environment): Making modular & reusable tools,” with D. Porter and D. Reside. He attended the 2011 conference of the Text Encoding Initiative (TEI) as an elected board member and chaired the Text and Graphics Special Interest Group (SIG) meeting in Wurtzburg, Germany in October. He presented “Information and the Victorian poet” at the Seminar for the faculty fellows of the Institute for Digital Arts and Humanities at Indiana University in December.



Associate Professor **Jingfeng Xia** published a book chapter “Open access for archaeological literature: A manager’s perspective” in *Archaeology 2.0: New Approaches to*

Communication and Collaboration. With S.K. Wilhoite and R.L. Myers, he published “A ‘librarian-LIS faculty’ divide in open access practice” in the *Journal of Documentation*. He published “A user-centered approach to open educational resources” in *Ubiquitous Learning: An International Journal* with L.C. Spotts. He gave an invited talk, “Open access: its achievements and challenges” to the Department of Information Resources Management at the School of Business at Nankai University in June. With Y. Liu, he presented “Usage patterns of open data repositories: The case of genomic data in Genome Expression Omnibus” at the International Workshop on Global Collaboration of Information Schools in Beijing, China in October. Also in October, Dr. Xia was appointed to the editorial board of *The International Journal of Information Science*. He presented “A cross-cultural perspective of open educational resources” at the Berlin 9 Open Access Conference in Washington, D.C. in November.



Assistant Professor **John A. Walsh** published “The liberty of invention: Alchemical discourse and

in *Archaeology 2.0: New Approaches to*

Elizabeth “Betsy” A. Salt, MLS’79, of Westerville, Ohio, spent part of summer 2011 as an exchange librarian at Shanghai Jiao Tong University in Shanghai, China. She writes, “I had a wonderful cross-cultural experience and learned a lot about academic libraries in China.” Salt is a catalog librarian at Otterbein College in Westerville.

1980s

Nancy C. Titus, MA’76, MLS’81, has retired from Indiana University Libraries after 35 years of service working with periodicals and serials in the Technical Services Department. She writes, “My career spans a time when the library’s files were entirely in paper to the present day when they are entirely digital.”

1990s

Virginia Fagerlin Baldwin, MLS’90, retired in 2011 after a 20-year career as a science, technology, and engineering librarian; thirteen years as an engineer specialist at Vandenberg Air Force Base; and three years as a scientific programmer at Patrick Air Force Base. She also devoted 10 years to raising two sons, and to running an Arabian horse-breeding program. During her career as a librarian, Baldwin was promoted to full professor and awarded tenure status at two universities — Eastern Illinois University and University of Nebraska—Lincoln — and now has Emeritus status at the latter. She is the editor of three books on science librarianship, and the author of numerous publications. Baldwin’s retirement activities include gardening, reading, and breeding and training Arabian horses.

Laura A. Ewald, MLS’98, of Murray, Ky., left her position as an academic public services librarian to establish LAEindexing, which provides back-of-book indexing services for trade, scholarly, children’s, and text books.

Marna M. Hostetler, BA’93, MLS’97, writes that in February 2011 she

was promoted to associate dean of libraries at the University of South Carolina.



SLIS alumna **Stephanie Derrick** (MLS’11) was featured in the ACRL Member of the Week column on October 31, 2011.

Betty Walters Martens, BS’77, MS’79, MLS’96, of Rochester, Ind., completed her two-year term as the state chairwoman of Circle the State With Song and All State Honor Choir sponsored by the Indiana Music Educators Association. She has now been appointed to the IMEA board as the awards chairwoman. She and her husband, Mark, MS’87, are happy to report that both of their daughters are now IU graduates. Katie B. Walters Martens, BS’08, has finished her third year of teaching in the Pharr—San Juan—Alamo school district in Pharr, Texas. Daughter Sadie J. Walters Martens, BS’11, graduated in May with a degree in therapeutic recreation. Betty Martens is a teacher at Rochester Middle School. Mark Martens is dean of students at the school.

2000s

In May, the Women’s Press Club of Indiana named **Gena L. Asher**, Cert/BA’79, MIS/MLS’03, as a prizewinner in its 2011 Communications Contest. She received first place in the category of website development/creation, corporate or for-profit sites; second place for website edited by entrant; second place for website development/creation, special interest sites; and honorable mention in three other categories. Asher is a Web editor and adjunct lecturer in the School of

Journalism at IU Bloomington.

Nicole A. Betty, MA/MLS’07, has accepted the position of arts and humanities librarian at Weber State University in Ogden, Utah.

Brooke A. Bolton, MLS’08, is director of North Manchester Public Library in North Manchester, Ind.

Jennifer Crowder Daugherty, MLS’07, writes, “After three years as director of reference and information services at the Laurel County Public Library in London, Ky., I have now accepted a position as the local and state history manager at Cumberland County Public Library and Information Center in Fayetteville, N.C.”

Emily Heinlen Davis, MLS’07, writes that she married Timothy Davis in April and was promoted to development analyst at the Indiana University Foundation in August.

Amber N. Emery, MLS’08, is children’s services coordinator at Fargo Public Library in Fargo, N.D., where she lives.

Natalia Minibayeva Framil, MIS’02, is vice president of information architecture at Empathy Lab, a company based in Conshohocken, Pa., that provides digital advertising services to the media, entertainment, consumer retail, pharmaceutical, and financial industries.

Justin A. Gardner, BA’99, MLS’05, is a special collections and cataloging librarian at American Printing House for the Blind’s Migel Library in Louisville, Ky.

“After 21 years working in libraries, I recently left the field to become executive director of my local Habitat for Humanity affiliate,” writes **Marcus A. Mabelitini**, MLS’02. “It is a fantastic new career opportunity,” he adds. Mabelitini lives in Tipp City, Ohio.

Class Notes

1960s

Joan Howe Benedetti, BA’58, MA’66, recently completed a searchable finding aid for the Craft and Folk Art Museum Records, 1965-1997, which are housed in the UCLA Library Special Collections. Benedetti was the CAFAM Museum Librarian for 21 years, from 1976-1997. She worked for almost 14 years, with the assistance of UCLA Library special collections staff, processing these institutional records, while also creating the searchable finding aid, now on the Online Archives of California website at <http://www.oac.cdlib.org/findaid/ark:/113030/kt5f59s1km>. The finding aid includes headings and scope notes for 6,208 file folders in 21 record groups. It is expected that the collection may be of interest to scholars in fields including art history, contemporary crafts, folk art, product design, world arts and cultures, folklore, museum studies, library and information studies, women’s studies, and studies of Los Angeles, among others. Benedetti

and her husband, the director and producer, Robert Benedetti, moved to Santa Fe, N.M., two years ago, where their only complaint is that “there is WAY too much to do!” They are especially involved with the city’s eight museums, an active theater scene, and an incredible range of excellent and diverse restaurants.

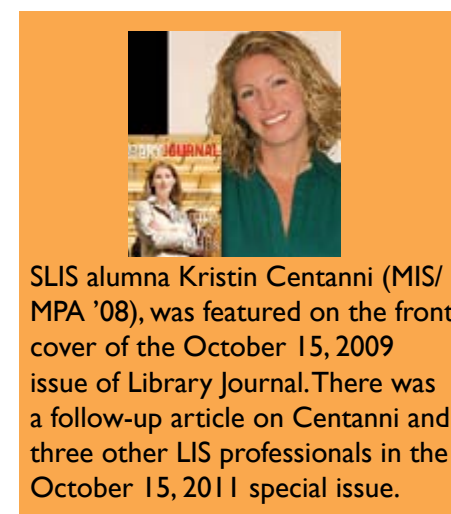
1970s

Lisa M. Browar, BA’73, MLS’78, MA’05, president of the Linda Hall Library of Science, Engineering, and Technology in Kansas City, Mo., has been appointed to the board of directors of the Missouri Center for the Book.

The Greater Bloomington (Ind.) Chamber of Commerce has named **Sara Lemon Laughlin**, MLS’72, MA’85, as the recipient of its 2011 Educator of the Year Lifetime Achievement Award. Director of the Monroe County Public Library since 2007, Laughlin received the award for “innovations involving school

libraries and for increasing the use of public libraries in Bloomington and Ellettsville.”

April Arington Legler, BA’68, MLS’71, has retired as associate director of undergraduate career services at the Kelley School of Business at IU Bloomington. Her husband, rifle I-Man T. Rex Legler II, BA’68, BA’69, OD’71, continues his optometry practice at the Martinsville (Ind.) Vision Clinic.



SLIS alumna **Kristin Centanni** (MIS/MPA ’08), was featured on the front cover of the October 15, 2009 issue of *Library Journal*. There was a follow-up article on Centanni and three other LIS professionals in the October 15, 2011 special issue.



Amy Jankowski (MLS'11) is an Assistant Librarian (Archives and Rare Books Collections) at the San Diego Zoo Global Library in Escondido, California. She is pictured here with an opaki.

a section of information literacy at Harrison College's northwest Indianapolis campus."

Rosanna Fidler Stephens, BS'01, MLS'04, is a technology support manager at Innovative Interfaces, Inc., in Emeryville, Calif.

Ronald D. Willis, BS'02 MIS'04, is a software developer at AmerisourceBergen Technology Group in Louisville, Ky.

2010s

Sheila A. Beale, MLS'10, is lead medical/appeals librarian at Accretive Health in Chicago,

Sarah S. Hines, MLS'10, is a young adult librarian at Vineyard Haven Public Library in Vineyard Haven, Mass.

Rachel S. Montgomery, MLS'11, is teen librarian for the Mooresville Public Library in Mooresville, Ind.

Kristopher M. Stenson, MLS'11, has accepted the position of electronic records archivist with the Illinois State Archives.

Yuening Zhang, MLS'10, is a science librarian in the Reference and Collection Management Department at Case Western Reserve University in Cleveland.

Xing Zhou, MLS'10 is a regulatory specialist at Cook Medical in Bloomington, Ind.

The editors gratefully acknowledge the assistance of the Indiana University Alumni Association in compiling the SLIS alumni class notes.



Greetings

from SLIS Alumni Board President

..... Jacob Nadal:

A few weeks ago, I had the pleasure of speaking to a class of MLIS students who are soon to be released onto the job market. The class had been spending some time looking at the skills required of new grads, and I was billed as "a person who actually hires people." As we spoke, I found myself returning again and again to the importance of connections, the same theme that is found throughout this edition of SLIS Network. One type of connection we talked about was personal: the classmates and professors, friends and colleagues, that make up your professional network. The other was an idea of intellectual community, shaped by shared questions, ideas, and habits of thought that come from studying in a certain place at a particular time.

As you look through the Class Notes in this issue, I hope you will take a moment to appreciate the educational common ground that gave rise to such a diversity of our professional accomplishment. As different as the day-to-day details of our jobs have become, I find it satisfying to think of how many of you I have talked with at a conference or on the phone, and still found common ground. Sometimes it was a professor we had in common, a core course that had changed from my year to yours, or a topic that we're both confronting in our different jobs.

This is not a simple retread of the theory-practice discussion. It is a reaccreditation year for SLIS, an election year for the United States, and another precarious year of job hunting for recent graduates. This is a big year for ideas about who we are and what we hope to accomplish. When I speak with current SLIS students and recent alumni, I know that I am allegedly there to share some real world wisdom, but mostly I am struck by how much I relish the prospect of another crop of graduates to refresh my thinking about the work we do. I hope that you will take some time in 2012 to enjoy the same experience. There are lots of opportunities: Sarah and Vicky have done great work on receptions for SLIS at our professional conferences, service on the alumni board is something I can personally vouch for, and any occasion that brings you to campus is a good chance to connect.

In Memory: Ralph Papakhian (1948-2010)

The Indiana University School of Library and Information Science has established the A. Ralph Papakhian Graduate Scholarship in Music Librarianship, which will be used to support scholarships in the field of music librarianship. Many music librarians have contributed to the work of this scholarship, which will help SLIS students in this specialty to offset educational expenses, travel to conferences, and other related professional opportunities in music librarianship. Ralph made a difference in the lives and the careers of numerous people, and is deserving of this honor and recognition. The establishment of the scholarship was celebrated at a SLIS Alumni Reception at the Music Library Association Conference in Dallas. The reception was held at the Fairmont Hotel on February 16, 2012.

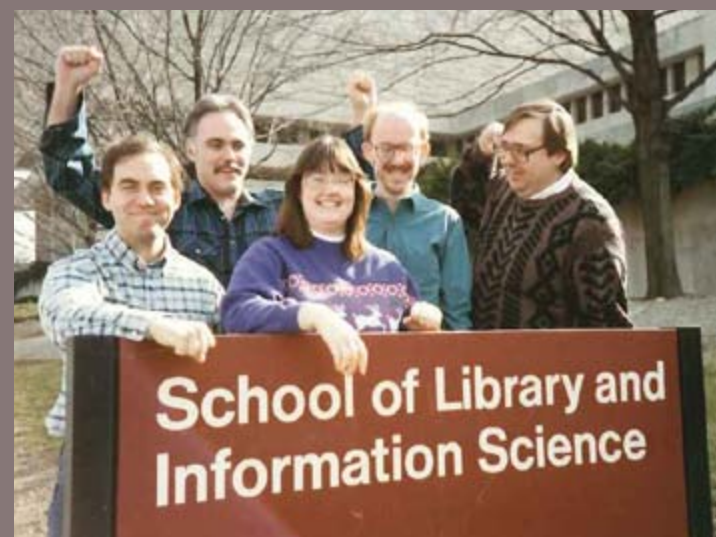
The following excerpt is from a statement by Ruthann McTyre, President of the Music Library Association in 2010. It gives a glimpse into his contributions to the field: "Ralph was best known for his work as a music cataloger. He was a model practitioner and teacher. Beginning in the late 1970s, he taught classes and supervised internships for library students enrolled in the music specialization offered by IU's School of Library and Information Science. In the mid-1990s, he and Sue Stancu instituted a summer cataloging workshop, and each year the roster for the workshop filled within days and names were added to a waiting list. Over the years, he trained innumerable music catalogers-- dozens, if not hundreds--and he instilled in each the importance of accuracy, curiosity, and intellectual rigor." [posted on the Midwest Chapter's website: www.mlmidwest.org/Ralph.html]

From Sue Stancu who worked with Ralph for thirty-one years, in a Remembrance Tribute published recently in a book dedicated to Ralph, *Directions in Music Cataloging* edited by two SLIS graduates Peter H. Lisius (MLS'00) and Richard Griscom (MLS/MM Musicology'81), p.164: "Ralph always looked for the best in everyone. He was a man without a trace of pretense or guile. He had a brilliant intellect and was friendly, kind and caring, generous, resourceful, down-to-earth, persistent, and patient. Ever the teacher and mentor, his door was always open; he always had time to answer a question. Ralph had a wonderful sense of humor."



Photo Credit: Rachel Papakhian

..... A Connection to Past Student Days



Did you read "Vibrations" in Spring 1992?

The SLIS alumni magazine (*Vibrations*) included this photo with the caption:

"The InfoManiacs - SLIS students Andy Wohrley, Bob Craigmile, Patty Wellinger, Andy Maxon, and Ray Rainer..."

Academic Research Libraries - Pushing (and Pulling) the Envelope

In mid-December 2011, four directors of ARL libraries, all with ties to IU, met with MLS Program Director Ron Day and Dean Debora Shaw to talk about changes in librarianship and their potential implications for SLIS. Research libraries were ably represented by Susan Gibbons (MLS '95), University Librarian at Yale University; Brenda Johnson, Ruth Lilly Dean of Indiana University Libraries; James Mullins (Ph.D. '84), Dean of Libraries at Purdue University; and Brian E. C. Schottlaender (MLS '80), Audrey Geisel University Librarian at the University of California San Diego.

Dramatic developments in technologies, budgets, and client expectations are compelling profound changes in what these library directors seek in their professional staffs. An essential skill is the ability to connect and communicate with researchers and other information users across campus and beyond. The library directors are especially interested in hiring new librarians who can express what they contribute to multidisciplinary efforts: the ability to understand what you know, what you can find out, what you don't need to know, and how it can all fit together.

Areas of particular need include data curation, metadata specification, project management, development (fundraising), statistics and analysis, program presentation, intellectual property and related legal issues, digital humanities, e-science, archives and special collections, and digital repositories.



[l-r: Mullins, Schottlaender, Gibbons, Johnson]

The libraries represented have similar needs, but remarkable differences as well. Brian Schottlaender reported that UCSD has cut library staff by 25% and is doing away with domain-based libraries. At Purdue, however, Jim Mullins is hiring to fill new positions with specialized skills.

Looking ahead, these library directors see a continuing decline of "the librarian in the library" and continuing demand for more engaged "field librarians" who are evident and valued across and beyond the institution. They expect research libraries may diverge from each other as each library responds to the needs of the institution it supports.

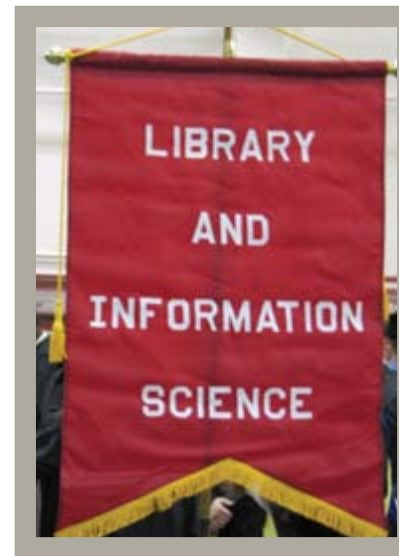
CONNECTION

"The focus of the librarian's professional knowledge is the **interaction** between users and graphic records, and the influences which shape that relationship."

Jesse Shera (1972) - *The Foundations of Education for Librarianship*

Quotes are a lot of fun. If you have ideas for quotes for the SLIS alumni magazine - please let us know (slisnews@indiana.edu). Thanks to Rebecca (Klusman) Cox (MLS'09) for the quote on page 13. She mentioned the quote when working at SLIS during her student days.

"Outside a dog, a book is man's best friend. Inside a dog, it's too dark to read." ~ Groucho Marx



Stay Connected with the SLIS Alumni Listserv

The SLIS Alumni-L Listserv is specifically for our SLIS grads. It is a low-traffic listserv monitored by Sarah Burton, who posts items of interest, such as announcements about SLIS alumni receptions in regional areas and at conferences.

Our SLIS Alumni listserv helps us to stay in touch with YOU! Contact Sarah to request your email address be added to this listserv: burtonsp@indiana.edu or call 812-855-3262 OR subscribe to the list directly: send an email to listserv@indiana.edu with following command: subscribe slisalumni-l

Library Journal

MOVERS & SHAKERS

For the past ten years, the **Library Journal** has recognized professionals in the field of library and information science for their work, dedication, and innovative ideas. SLIS graduates are among these leaders (see list below.)

Think about nominating a colleague for this honor.

- | | | |
|------------------------------|-------------------------|-----------------------------|
| Deb Noggle (MLS'05) | John Watts (MLS'09) | Catherine Vanstone (MLS'05) |
| Jamie Markus (MLS'05) | Kristi Palmer (MLS'03) | Ann Snoeyenbos (MLS'91) |
| Michael Porter (MLS'99) | Marshall Shore (MLS'92) | Connie Mitchell (MLS'92) |
| Michelle Dalmau (MIS/MLS'04) | Matt Gullet (MIS'94) | Jeff Trzeciak (MLS'91) |
| Eileen Simmons (MLS'84) | Susan Gibbons (MLS'95) | Michael Stephens (MLS'95) |

Deb Noggle and John Watts were the SLIS graduates selected among the 2011 LJ Movers and Shakers. In the announcement, Francine Fialkoff, Editor-in-Chief, Library Journal stated that those selected are "doing extraordinary work to serve their users and to move libraries of all types and library services forward... This year's group of 50 brings the Movers cohort to just over 500. We're proud to recognize their achievements—and to encourage you to be inspired by their vision and optimism and turn their ideas into fodder for your own innovative work."

Deb Noggle was honored as a Community Builder. She works at the Tecumseh Branch of the Allen County Public Library in Fort Wayne, Indiana. "Noggle has risen in the ACPL ranks, she has not lost her passion. The organization of a 2007 Harry Potter event took more than nine months but was exceedingly rewarding. It drew in excess of 6000 people to the affair, which featured 24 event/activity stations and roving performers. In these challenging times, Noggle's philosophy is on the mark. 'You can do the impossible...just find a way. When that doesn't work, try another way. Sometimes, you do have to reinvent the wheel.'" [Library Journal] We asked her for additional thoughts and she wrote: "Completing my MLS at IU is one of my greatest accomplishments, and it opened doors for me that really expedited my career."

John Watts was honored as a Protector of Privacy. He is the Reference and Outreach Librarian at the Kimbel Library, Coastal Carolina University, Conway, South Carolina. "To help students grapple with their social networking identities, Watts designed a presentation about protecting and improving an individual's digital footprint, as part of his library's First Year Experience program and for parents and students at Family Weekend... 'Librarians have always worked hard to protect the privacy of our users,' says Watts. 'Now that this issue has reached beyond the walls of the library, librarians are in a good position to be a strong voice at the local and national level.'" [Library Journal]

Collaboration: A Lasting Connection

The Indiana Library Federation recently awarded **Marcia Smith-Woodard** (pictured on the left) the 2011 Special Services Award. The award “recognizes exceptional contributions or services which strengthen library services in a local community, school, or across the state. The person’s contributions must be of an extraordinary nature with unprecedented benefits to library or media center services.” Smith-Woodard’s efforts as the Special Services Consultant at the Indiana State Library and, in particular, the Project Director for the Indiana Librarians Leading in Diversity (I-LLID) program qualified her for this honor. The I-LLID program began in 2008 when the Indiana State Library and the Indiana University School of Library and Information Science received a \$1,000,000 grant from the Institute of Museum and Library Services “for recruiting and educating 30 ethnically/racially diverse students.” These student fellows, along with Debora Shaw, Professor and Dean of SLIS, and the Indiana Black Librarians Network (IBLN) nominated Smith-Woodard for the award. SLIS faculty member **Marilyn Irwin** (PhD ‘91) was the co-director of the project.



Instruction: A Key Connection

Brian Winterman (MLS’03) participated in the Rubric Assessment of Information Literacy Skills (RAILS) project for the 2011-2012 academic year. Five institutions contributed to the project based at Syracuse University’s School of Information Studies. Winterman, Information Fluency and Assessment Librarian for the IUB Libraries, represented Indiana University. He “was selected from librarians attending the Association of College and Research Libraries (ACRL) Assessment Immersion Program, an intensive professional development experience focused on building librarian capacity to assess student learning.”



Brian Winterman is also a SLIS adjunct faculty member. He has taught SLIS S523: Science and Technology Information in recent years. With his encouragement, the students in his classes have had articles published on their research. Articles have been in several issues of “Issues in Science and Technology Librarianship” - an ACRL publication.

ALA EMERGING LEADERS:

Each year, the **American Library Association** selects approximately 75 newer librarians and information specialists to participate in its **Emerging Leaders Program**. The program, which began in 2007, “is designed to enable library staff and information workers from across the country to participate in project planning work-groups; network with peers; gain an inside look into ALA structure; and have an opportunity to serve the profession in a leadership capacity early in their careers.” We are proud of SLIS graduates who have been selected to be among those honored as Emerging Leaders.

- | | |
|----------------------------------|----------------------------|
| Miranda (Henry) Bennett (MLS’05) | Kristen Kirk (MLS’05) |
| Chanitra Bishop (MIS/MLS’08) | Amalia Monroe (MLS’07) |
| Latrice Booker (MLS’06) | Bethany Sewell (MLS’06) |
| Kimberly Brown-Harden (MLS’06) | Rachel Slough (MLS/MA’10) |
| Nicole Cavallaro (MLS’06) | Kristin Stout (MLS’07) |
| Heather Cole (MLS’06) | Emily Symonds (MIS/MLS’07) |
| David Dahl (MIS/MLS’08) | Michael Witt (MLS’06) |
| Emily Ford (MLS’07) | Lisa Worrell (MLS’04) |

“You can do the impossible...just find a way. When that doesn’t work, try another way. Sometimes, you do have to reinvent the wheel.” - Deb Noggle (MLIS’05)



SLIS ALUMNI
SURVEY:

What would you like to see more of in your SLIS Alumni Magazine?

Email us with ideas:
slisnews@indiana.edu

SLIS ALUMNI
PLEASE POST YOUR JOB OPENINGS

Alumni (and other employers) can post job openings for free on the SLIS website. Alumni are welcome to view the job ads.

www.slis.indiana.edu/careers

EX OFFICIO

Debora Shaw, Dean, SLIS, shawd@indiana.edu

Howard Rosenbaum, Associate Dean, BL, hrosenba@indiana.edu

Tomas Lipinski, Executive Associate Dean, IUPUI, tlipinsk@iupui.edu

Sarah Burton, SLIS, burtonsp@indiana.edu

Jennifer Gentry, IU Alumni Association, jengentr@indiana.edu

Vicky Martin, IU Foundation, vimartin@indiana.edu

SEND IDEAS TO YOUR
SLIS ALUMNI BOARD

Jacob Nadal (MLS 2001) President
jnadal@library.ucla.edu

James Wisner (MLS 2002) Immediate Past President
jwisner@scelc.org

Patricia Court (MLS 1977) Membership Chairperson
pgci@cornell.edu

William J. Crowe (Ph.D. 1986)
wcrowe@ku.edu

Carrie Donovan (MLS 1999)
cdonovan@indiana.edu

Tamara Schnell (MLS 1992)
Tammy.schnell@lcc.edu

Rachel Slough (MLS 2010)
slough.rach@uwlax.edu

Connect
..... with the
Future

Thank You

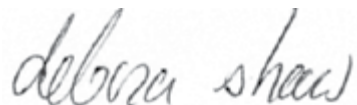
For Your Support

Sincere thanks from all of us at SLIS for your contributions to the school. Your generosity truly makes a difference in SLIS's future. Gifts from alumni and friends support our students and faculty by helping to create the connections that last a professional lifetime and beyond.

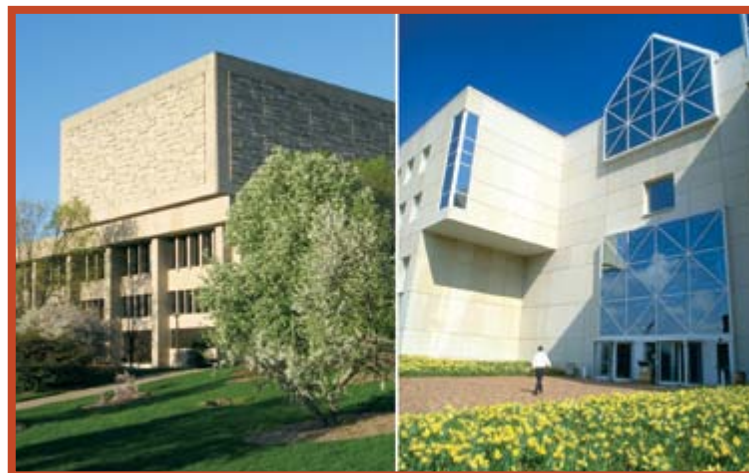
SLIS donors have been especially generous with financial support for students. As a result, we are able to recruit some remarkable people who will be the next generation of information professionals. And we will need their insight and expertise to address the daunting challenges for the profession and indeed for the future of information in our society.

Thank you for your commitment to the future of library and information science and your support of SLIS's role in shaping that future.

Sincerely,



Debora Shaw
Professor and Dean



Individuals

Total Contributions: \$78,043

- | | | | | |
|---------------------------|--------------------------|---------------------------|--------------------------|------------------------|
| Wanda J. Abel | Qizheng Bao | Joan M. Benedetti | Nancy J. Brandenburger | Sandra L. Camp, D.M.E. |
| Carol E. Abell | Judy Kay Bard | Miranda Bennett | Sandra M. Bray | Alice A. Campbell |
| Cheryl L. Ade | Daniel F. Barden | Victoria M. Bennett | John T. Brock | Douglas H. Campbell |
| Patricia N. Agbim | Susan G. Barhan | Geraldine M. Benson | Carolyn M. Brown | Jean E. Campbell |
| Julia K. Aker | Clarissa J. Barnes | Patricia D. Benson | Debra L. Brown | Sarah B. Canino |
| Catherine A. Albrecht, Ph | Kira B. Barnes | Stella A. Bentley, Ph.D. | Julie K. Brown | Margaret D. Cardwell |
| LuAnne Allen | Frederick D. Barnhart | James R. Berghoff, M.D. | Stanley R. Brown | Elizabeth M. Carlson |
| Thomas J. Allen | Janet L. Barr, Ph.D. | Rita R. Berghoff | Michael P. Browne, Ph.D. | James W. Carlson |
| Ilah J. Allsop | Jane E. Barron | Sharon A. Bernhardt | Conrad Bruderer, D.M. | Karen A. Carlson |
| Richard H. Allspaw | Mia W. Bassham | David W. Bessire | Elsbeth A. Bruderer | Denise M. Carrasquillo |
| Sharon W. Allspaw | Carol F. Batty | Olivia R. Bessire | Garnett W. Bryant, Ph.D. | Delia Carruthers |
| Jeffery A. Alpi | Frank D. Baudino | Barbara S. Beury | Virginia L. Bryant | Sarah C. Carter |
| Kristine Markovich Alpi | Carol F. Baudino | Barbara S. Beury | Denise K. Buhr | Donna M. Catron |
| Amal A. Altoma | Kathleen M. Baudino | Verda Hostetler Bialac | Charles R. Burd | Diane M. Chapman-Lyon |
| Salih J. Altoma, Ed.D. | Christina F. Bauer | Robert F. Blakely, Ph.D. | Amy L. Burton | Barbara J. Chase |
| Jean S. Amelang | John R. Baumann | Rosanna L. Blakely | Sarah P. Burton | Barbara J. Chase |
| Charlotte A. Ames | Mary L. Baumann | Lisa Bodenheimer | Jeanne C. Buss | Michael H. Chase |
| Virginia R. Andis | Douglas J. Bean | Linda E. Bodnar | Vicki B. Butz | Robert L. Cheng, Ph.D. |
| Alice M. Angelo | Joseph P. Becherer | William M. Bodnar | Karen Thompson | Susie H. Cheng |
| Michael H. Arenstein | Caroline J. Beebe, Ph.D. | Christine E. Bolis | Callahan | Jordan J. Choper |
| Randall F. Ayers | Elizabeth A. Belew | David A. Bolis | Patrick F. Callahan | Marcella A. Ciucki |
| Joyce A. Baer | George H. Belhobek | Kay A. Bowen | Hildegund M. Calvert | Mary L. Clapp |
| | Randall F. Ayers | Frederic S. Brandenburger | Judith A. Calvert | Marilyn L. Clark |

- Ginger Clark
Elizabeth D. Clarke
Hugh Joseph Cloke
Patricia A. Coleman
William E. Coleman, Jr.
Monica L. Collins
Harold G. Colson, Jr.
Adele W. Combs
Kimberley W. Condas
Steven Condas
Ronald C. Conner
Nancy A. Connor
Kay A. Conrad
Amy S. Coolidge-Harshbarg
David L. Cooper
Judith C. Cooper
William L. Corya
Christina E. Courtright
Ruth A. Coyle
Alice M. Craft
Jonathan O. Crane
Kerrie A. Crane
Elizabeth B. Crawford
Elizabeth Crews
Kenneth D. Crews
Steven F. Crites
Blaise Cronin, Ph.D.
Elaine C. Crowe
John B. Crowe
William J. Crowe, Jr., Ph
Michael S. Crowther
Allison C. Cunningham
Brett A. Cunningham
George L. Curran, III
Dr. Conny D. Curtis
Martha A. Curtis
Linda L. Dahlberg, Ph.D.
Thomas P. D'Ambrosio
D'Arcy Danielson
Jeffrey L. Danielson
Jennifer A. Darnell
Clara Y. David
Charles H. Davis, Ph.D.
Jennifer J. Davis
Jerry M. Davis
Jinnie Y. Davis, Ph.D.
Marlys F. Davis
Matthew H. Davis
William P. Davis
Barbara J. Dawson
Karen K. Dean
Vicki L. DeBolt
Victor Decarlo
Donna K. Decker
James A. Deddens, Ph.D.
Marcia K. Deddens
Anthony B. DeHoff
Jill K. DeHoff
Pedro J. DeJesus

- Starr O. DeJesus
Linda T. Dempf, D.M.
Alan R. Dennis
Carol A. Derner
George B. Derner
Rhoda T. Derstine
Irene F. Dess
Mary J. Detweiler
Marcus M. Diamond
Nancy B. Diamond
Alita A. Dickover
Vicki J. Dillon
Patricia J. Dinnsen
Jill E. Dixon
Christopher C. Dobbs
Sally C. Dockter
Thomas M. Dousa
James A. Dowell
Nancy E. Dowell
Christian Y. Dupont, Ph.D
Frances E. Durako
Tierney V. Dwyer
Susan K. Dyer
Carolyn K. Eaton
Conrad M. Eberle
Charles Eckman, Jr.
Phyllis E. Eckman
Shirley A. Edsall, Ph.D.
Jeanette I. Edward
David H. Ehrenstein
Judith S. Ehrenstein
H. Ann Elders
Bruce E. Eldevik
Valerie L. Elliott
Allen W. Ellis
J. Christopher Eustis, Ph
Joanne D. Eustis
Helene J. Evans-Helling
Bernadette G. Ewen
Jeffrey D. Ewen
Cynthia K. Faunce

- Randall A. Faunce, O.D.
David H. Fennema, Ph.D.
Susanna C. Fennema
Kenneth L. Ferstl, Ph.D.
Sondra M. Ferstl, Ph.D.
Linda C. Fidelle
Leah J. Fidler
Margaret J. Fink
Mary J. Finnegan
James P. Fiori
Janice M. Fiori
Barbara M. Fish
James H. Fish
Donald W. Fisher, Jr.
Jeanine M. Fisher
Patricia L. Fisher
Rev. Stephen K. Fisher
Brian D. Flueckiger
Ramona L. Ford, Ph.D.
Christine L. Foster
John D. Foster
Susan A. Foster
Leslie J. Foutch
Susan G. Fowler
Laura H. Foy
Marlena Frackowski
Roman Frackowski
Karen J. Franks
Steven Franks, Ph.D.
Marvelyn E. Fuller-Thomps
Carla J. Funk
Amina Gabrielova
Andrei Gabrielova
Lori S. Galbreath
Blair Garceau
B. Delworth Gardner
Kathryn C. Gardner
Nancy C. Genzy
David M. Gillespie, Ph.D.
Elma Glenn
Rosemary Glenn

- Juliet P. Glenn-Callender
Kim E. Goble
Janice M. Good
Richard J. Good
Helen L. Gorman
Raymond F. Gorman, D.B.A.
Margaret E. Green
Alice A. Greenburg
David Greenburg
Courtney R. Greene
Judy Greeson
Karin R. Gries
Linda J. Grimes
James B. Groendyke
Joanne L. Groendyke
Lyle P. Groeneveld, Ph.D.
Sharon L. Groeneveld
Robert J. Grover, Ph.D.
Christopher A. Growcock
Shirley A. Gunn
Deborah Guthrie-Jones
Joseph L. Hafner
Ruth M. Hahn
Glenn L. Halberstadt
Betty Jo Hansen
Elizabeth A. Hansen
Carol J. Hardesty
Larry L. Hardesty, Ph.D.
Amy L. Harshbarger
Gail Hatfield
Wendy Hatfield
Rebecca J. Havens
Barry P. Haworth
Cathy W. Haworth
Dr. Sarah Haynes
Thomas E. Heard
Betty S. Henning
Pamela J. Herman
Richard J. Herman
George D. Herr

- David S. Hess
Joe E. Hickman, D.M.
Margaret M. Hickman
Alec Hirsch, Ph.D.
Elaine Gass Hirsch
Donald D. Hochstetler
Jeanne Sarber
Hochstetler
Linda L. Hochstetler
Ralph E. Hochstetler
Dennis L. Hoffman
Artis A. Hoffmann
Jane E. Hohn
J. Denise Holaday
S. Kent Holaday, Jr.
Clarence Holland, Jr.
Jane Dizer Holland
Janice L. Holtry
Danise M. Hoover
David L. Hoover, Ph.D.
Merlyne L. Howell
Shu-Min L. Hsieh
Chuan Hui Huang
M. S. Hudson
Michael S. Humnicky
John H. Hunter
Carol Hupp
Thomas M. Hupp
B. J. Irvine, Ph.D.
Barbara A. Jablonski
Paul M. Jablonski
Robert D. Jaccaud
Sylvia A. Jaccaud
Rev. James G. Jaeger
Karen Jaeger
Laura J. James
Arthur L. Jeffries
Lora H. Jeffries
Shirley L. Jenkins
Harry F. Jerolleman
Lois J. Jerolleman
Martin D. Joachim, Jr.
David A. Johnson
Donald C. Johnson
Joy A. Johnson
Lois M. Johnson
Margaret C. Johnson
Mary Jones
Thomas Q. Jones
Janis E. Jordan, Ph.D.
Eric T. Jump
Jennifer Burton Jump
Barbro C. Jung
Norman O. Jung
Ruth A. Kallenberg
Martha Kapitz-Growcock, M
Laura R. Keen
Deborah A. Kegel
Medora J. Kennedy

Jeremy R. Kenyon
Anne M. Keough
Ellen L. Kessler
Gail L. Keutzer
Carolyn A. Kidder
Eva L. Kiewitt, Ph.D.
Clyde B. Killian
Sharon J. Killian
Vicki J. Killion
Cory M. King
Donald P. King, Ph.D.
Susan E. King
Michael D. Kite
Adele D. Koch
Carol J. Kocher
Ray H. Kocher
Betsy B. Kohnstamm
Daniel F. Kohnstamm
Philip C. Koontz
Sondra Koontz
Michelle S. Koth
Margaret R. Kownover
Thomas E. Kownover
David Kramer
Kimberly A. Kramer
Randolph Kramer
Sally Kramer
Jennifer A. Kruger
Jeffrey D. Kushkowsky
Thomas J. LaPrise
Frank B. Later
Sarah L. Later
Edward Lavagnino
Mary M. Lavagnino
Patricia E. Lawson
James A. Lazerwitz
Katherine C. Lazerwitz
Judith A. Leavitt
Ruth A. Lehman
Melody J. Lembke
Darrell H. Lemke, Ph.D.
Martha B. Lempke
Harlan J. Lenius
Sharon A. Lenius
Michael R. Leonard
Ethel M. Leopold
Carolyn S. Leslie
Sharon A. Lewis
Emily J. Lievense
Delores S. Lifson
Hugh Lifson
Vona L. Lindsey
Andrew H. Lisowski
Susan Lisowski
Janice M. Litschert
Rev. David Livingston
Sharon Livingston

Judith K. Locke
James T. Lockwood, Jr.
Sue E. Lockwood
Kristin W. Louden
Richard O. Louden
Michael E. Lunsford
Patricia A. Lunsford
Catherine E. Lynch
Lt. Col. Homer M. Lynch,
John L. Lyon
Ce Ma, Ph.D.
Kathleen R. MacMurray
Paul C. MacMurray
Jean A. Major, Ph.D.
Robert L. Major
Carolyn Mallalieu-Knapp
Maxine E. Mann
David J. Martaus
Susan E. Martaus
Donald B. Marti, Ph.D.
Gail Marti



Betty Snyder Martin
Carolyn M. Martin
Cheryl S. Mathews
Deborah K. McAnallen
Carol A. McCafferty
Duncan R. McCoy
Elizabeth F. McCraw
Beverly I. McDonald
Faith McElroy
Virginia McEnroe
Mildred M. McGinnis
Carolyn S. McGinty
James J. McGinty
Carolyn Y. McIntosh
Christina M. McKee
Martha L. McKnight
Theodore P. McKnight
Kathleen A. Menanteaux
Barbara W. Merriam,
Ed.D.
Leonora L. Merry
Carolyn J. Metz
Larry R. Metz
James L. Meyers

Nancy L. Meyers
Brittany L. Michaels
Susan M. Middleton
Donald D. Miles
Mary L. Miles
Carolynne L. Miller
Gordon L. Miller
Judith M. Miller
Karen R. Milligan
Linda L. Mills
Steven A. Mills
Fern E. Miner
Karen S. Modisett
Leah M. Monger
Connie J. Morley
Meris Morrison
Alice L. Morton
Emily J. Mummy
Eric L. Mundell
Ron Mundell
John M. Mundy
Beverly S. Murphy

Russell N. Murray
Wanfang S. Murray
Valentine Christine K. Mu
Elizabeth A. Myers
Carol J. Nahrwold
Mark E. Napier
Carol R. Nelson
Ralf E. Neufang
Suzanne M. Neufang
Patricia E. Newman
John K. Newton
Mary M. Newton
James E. Nicely, Ph.D.
Sonya C. Nicely
Judith F. Niles
Marcia A. Norman
O. Gene Norman
Diane M. Nye
Andrew J. Nykiel
Lori L. Nykiel
Kiyoko Okazaki
Lois C. Olsrud
Elaine C. O'Neil

Matthew W. Onion
Cynthia F. Ortego
Isabelle E. Otter
Warren Otter
Carla W. Owens
Emelia M. Parker
Frank M. Parrish, III, Ed
Marcia Lauritzson
Parrish
Audrey J. Parsons
David M. Patterson
William C. Patterson
Thomas W. Perkins
John F. Peters
Fred M. Peterson, Ph.D.
John R. Pfrommer, Jr.
Karen J. Piegza
Penelope A. Piercy
Loren L. Pinkerman
Allyn J. Plambeck
Doris A. Plambeck
Stephanie L. Plowman
Lois P. Pollard
Deborah M. Polley
James W. Pollock
Rachel B. Pollock
Dennis K. Poulton
Kathryn G. Poulton
Bonnie K. Price
Annette R. Proebsting
Elizabeth L. Prosser
Loring B. Prosser
Judith M. Pryor
Jeffrey Purtee
Sharon A. Purtee
Ranae S. Qualls
Denis J. Radecki
Suzanne Radecki
Stanley C. Rader
Lauretta J. Raifsnider
Ronald D. Raifsnider
Jerrienne M. Rain
Kathleen S. Ramey
Richard L. Rathe
Peter W. Rayment
Ann L. Reardon
Helen E. Remes
Kent W. Remmenga
Martha Reynolds
Dennis E. Rheinheimer
Teresa A. Rheinheimer
Stephen K. Rich
Katherine M. Richards
Gregg M. Richardson
Kathleen T. Richardson
Kenneth W. Richardson
Revenna S. Richardson

Virginia Richmond
John A. Rieger
Margaret A. Rieger
Beverly Rikken
Larry D. Rikken, Jr.
Carolyn R. Riley
Edwin B. Riley, Jr.
Jonathan H. Riley
Olivia Piper Riley
Rebecca A. Ristow
Robin Cantwell Ritchie
John A. Robertson
Arthur W. Robinson,
Ph.D.
Margaret E. Robinson
Martha A. Roblee
Thomas A. Roblee
David R. Rodgers
Jose A. Rodriguez, Ph.D.
Betty L. Roeske
Thomas D. Rohmiller
Michael P. Romary
Dov Ronen, Ph.D.
Naomi Ronen
Robert M. Ronk
Sheila G. Ronk
Gwendoline C. Rosen
Charles E. Rowan, M.D.
Odessa Rowan
Elizabeth A. Rozelle
Zach D. Rozelle
Rosalie A. Ruff
Judy K. Rule
Gaye Scudder Rumble
Denise Rumschlag
Eric T. Rumsey
Dominic Saccone
Elizabeth A. Salt
James A. Sandham
Valerie J. Sandham
Desiree D. Saunders
E. Stewart Saunders,
Ph.D.
Margaret O. Saunders,
Ph.
Glen D. Scales
Markeita H. Scales
Martha L. Scearce
Margaret M. Scharf
Richard K. Scharf
John C. Scheer
Catherine L. Schell, M.D.
Phyllis J. Schoonover
Gary M. Schultheis
Sandra Schultheis
Charles A. Schwartz
Katherine Scott

Mary M. Scott
Michelle L. Scott
Barbara W. Seaman
Kim E. Sechler
Martha E. Sechler
F. Annette Seib
Claudia S. Seifert
Richard C. Seifert
John C. Selzer
Mary J. Selzer
Jerry T. Seng, Ph.D.
Laurel T. Setser
Deborah Shaw, Ph.D.
Rebecca S. Sheffield
Richard R. Shell
Marian S. Shemberg
Cheryl A. Short
Daniel W. Short
Barbara J. Shultz
Samuel V. Shultz
Barbara W. Silbersack
Carol L. Simmons
Erin H. Simmons
Janice Simmons-
Welburn
Carol A. Singer
Scott R. Sinnott
Alan F. Slightom
Beth A. Slightom
Charlotte A. Smith
C. Dean Smith
Howard L. Smith
Jerrold R. Smith, M.D.
Joe D. Smith
Karen A. Smith

Karen T. Smith
Lori L. Smith
Suzanne M. Smith
Elizabeth M. Snider
Julieann Snodgrass
Patrick S. Snodgrass
Yongyi Song
Brad D. Spann
Cynthia A. Spann
Benjamin F. Speller, Jr.,
Marsha D. Spieth
Cynthia L. Spohr
Catherine E. St Andre
James A. Staudt
Paula Mae Shane Staudt
Michael E. Stauffer
Shawn E. Steidinger
Susan A. Steinke
Emogene C. Stephenson
Christine M. Sterle
Craig A. Stewart, Ph.D.
Jean Fabish Stickles
Charles G. Stiefvater
Grant Stokke
Sheridan Stormes
Sybil A. Strupp
Sheryl L. Stump
Bert Stunkard, Jr.
Deborah E. Sulzbach
Padmanabhan
Sundararaman
Lorelle R. Swader
Donna M. Swinford
Lois F. Szudy
Norman J. Szydlowski

David A. Tarr
Dorothy J. Tarr
David R. Taylor
Linda S. Tenney
David W. Thompson
Elizabeth L. Thompson
Gary B. Thompson
Randall J. Thompson
Sandra R. Thompson
Theresa A. Thompson
Christine Shama Tilton
Joan G. Tinker
Larry Tinker
Betty Tomeo
David S. Tomeo
Richard B. Torgerson
Elizabeth A. Torphy
Margaret A. Trauner
Tamra L. Trauner
Fernando Trcka
June L. Trcka
Bruce C. Tribble
Madelyn P. Tribble
Michelle R. Turvey-
Welch
Jennifer M. Ulrich
Stephanie E. Umbach
Monica A. Unger
Michelle Unrue
Eleanor J. Valentine
Kimberly Marie Norris
Ven
Carol S. Vogt
Lilo Von Stralendorff
Vicco H. Von

Stralendorff
Barbara A. Von Wahld
Nancy L. Wade
Lori E. Wahl
Margaret K. Walker
Richard D. Walker, Ph.D.
Saundra K. Walker
Suzanne E. Walker
James E. Weaver
William C. Welburn,
Ph.D.
Laurel A. Wendt
Kenneth L. Werne
Anna West-LaPrise
Amy S. Wharton
Cynthia M. Whitacre
Claytonia A. White
Brenda J. Whitmore
Laurence D. Whitmore
Elizabeth A. Whitmyer
John E. Wickman, Ph.D.
Shirley J. Wickman
Susan E. Wiegand
Andrew R. Wiesman
Lynn L. Wiesman
Cynthia A. Wiggins
Gary D. Wiggins, Ph.D.
S. Mia Wiggins
Patrick J. Wilkinson
Kathy Willhite
Robert A. Willhite
Lynda L. Williams
Marvin D. Williams
Michael A. Williams
Sarah C. Williams

Denise L. Wirrig
Melanie A. Wissel
William H. Wissel
Marcia A. Witt
Gary Wolff
Michele Gotz Wolff
Louise A. Wolpert
Sheila D. Womack
Marilyn D. Wood
Martin L. Wood, III
Gail R. Woodruff
Rose M. Woodsmall
Cheryl S. Wright
William F. Wright
Brenda W. Wych
Susan D. Wygant
Rahul R. Yadav
Constance L. Yaffe
Stanley S. Yaffe
Barbara J. Yasson
Steven P. York
Reiko Yoshimura
Eric W. Young
Nannie B. Young
Marlys J. Youngck
Gary A. Yurow, M.D.
Martha S. Yurow
Barry J. Zaslou
Michael G. Ziga
Rebecca K. Ziga
Alan F. Zoellner, Ph.D.

Corporations, Trusts and Foundations

Total Contributions: \$115,333

Access Eap Counseling LLC
American Electric Power
AT&T Foundation
Biomet Incorporated
Boeing Company
Chevron Corporation
Eli Lilly & Company
Elsevier
Jerrold R. Smith Living Trust
John & Ruth Kallenberg Trust
Laura H. Foy Trust
GE Foundation

James S. McDonnell Foundation
Lilly Endowment, Inc.
Lockheed Martin Corporation
Lois Davidson Pollard Rev Trst
Marathon Oil Company Fdn
Mitzi a Lewison Family Trust
Rockwell Collins Inc
Scripps Howard Foundation
Temple-Inland Foundation
United Way of the Bay Area
Wells Fargo Foundation

Thanks for Giving

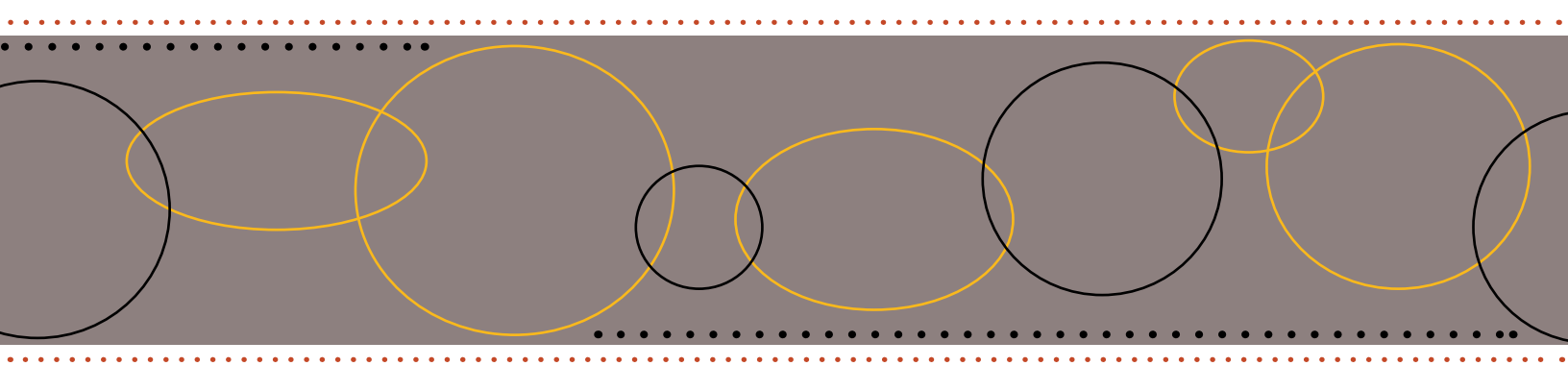
Sarah Burton (left) and Vicky Martin (right) have worked together since 2006 to develop and strengthen the relationship between the school and our alumni. We thank you for your generous contributions to SLIS as well as your participation in the events we plan.



SLIS Network

Alumni Magazine: SLIS Bloomington and Indianapolis
School of Library and Information Science
Indiana University
1320 E. 10th Street, LI 011
Bloomington, IN 47405-3907

Nonprofit Organization
U.S. Postage
PAID
Indiana University
Alumni Organization



The IU Alumni Association maintains records for all IU Alumni. Mail updates and class notes to:
IU Alumni Association, DeVault Alumni Center,
1000 East 17th Street, Bloomington, IN 47405-1521
Or, update online at: <http://alumni.indiana.edu/directory>

SLIS Alumni: What's new with you?

Name _____
Date _____
Last name while at IU _____
IU Degree(s)/Yr(s) _____
Home address _____
City _____ State _____ Zip _____
Home phone _____
Business title _____
Company/Institution _____
Company address _____
City _____ State _____ Zip _____
E-mail _____
Mailing address preference: Home Business

Your news (*Attach additional pages if necessary.*): _____

Please send me information about
IU Alumni Association membership.

IUAA membership includes membership in the IU School of Library & Information Science Alumni Association and in your local alumni chapter. Membership is now 80 percent tax deductible!

To join: go to www.alumni.indiana.edu or call (800) 824-3044.

Search "IU Alumni Association" on Facebook and Twitter.