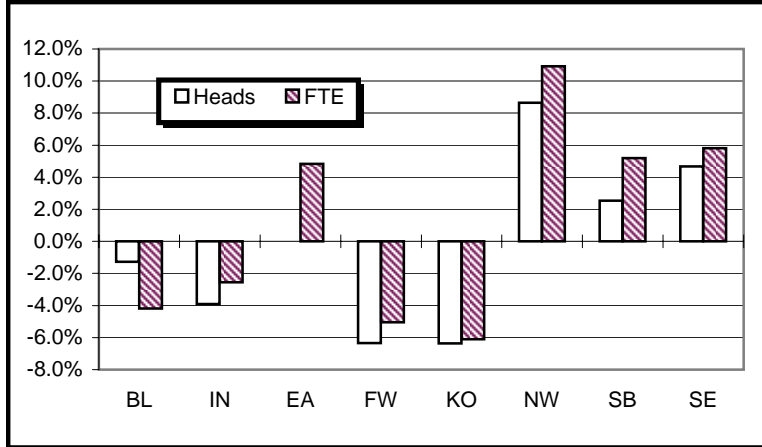
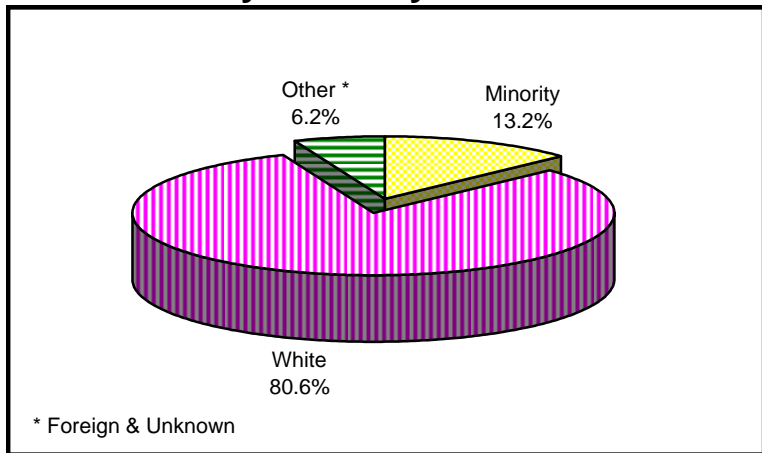




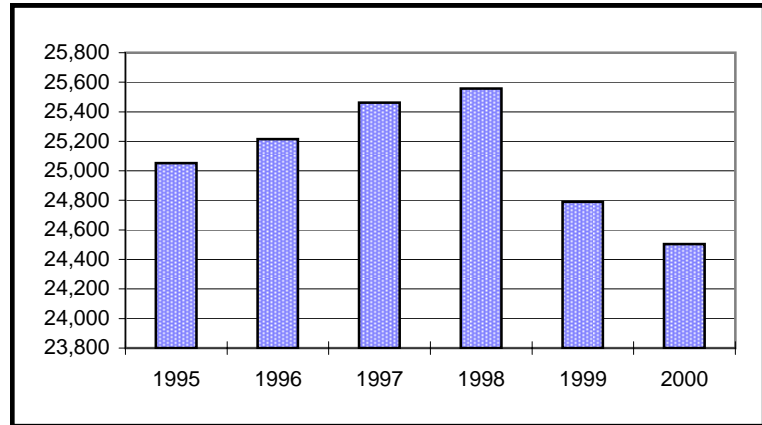
Enrollment Percent Change



Enrollment By Ethnicity



Historical Summer II Enrollment



University Enrollment Summary

	#	% Change(a)
Headcount	24,504	-1.2%
Credit Hours	97,886.0	-1.5%
FTE	6,929.9	-1.1%
Students By Class (b)		
Freshman	2,235	-11.1%
Sophomore	3,025	-6.1%
Junior	3,099	1.1%
Senior	6,196	-1.1%
Students By Level		
Undergraduate	14,555	-3.4%
Graduate	4,443	1.7%
Professional	1,008	2.6%
Sp. Undergrad	2,146	-7.0%
Sp. Graduate	2,352	14.1%
Sex		
Male	9,560	-1.3%
Female	14,944	-1.1%
Ethnicity		
Amer. Indian	78	16.4%
Asian	655	1.2%
Black	1,967	-2.7%
Hispanic	528	1.7%
White	19,745	-1.5%
Foreign	1,310	3.1%
Unknown	221	-0.5%
Undergraduates By FT/PT (b)		
FT-UG	4,486	-3.3%
PT-UG	10,069	-3.5%
Residency		
Resident	20,444	-1.8%
Non-Resident	4,060	2.0%

(a) Compared with Summer II, 1999

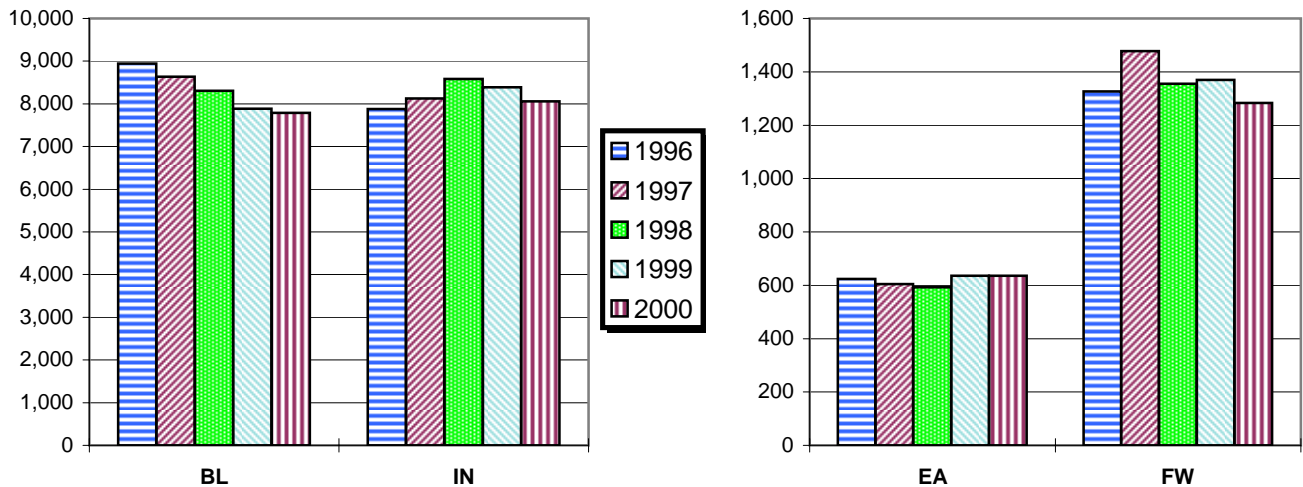
(b) Degree-seeking only

Campus Enrollment Summary

By Headcount, Credit Hours, and FTE

	Headcount		Credit Hours		FTE	
	#	% Change	#	% Change	#	% Change
BL	7,786	-1.3%	33,660.0	-4.6%	2,403.1	-4.2%
IN	8,058	-3.9%	31,295.5	-3.0%	2,197.7	-2.6%
EA	636	0.0%	2,477.0	4.7%	167.2	4.8%
FW	1,283	-6.4%	4,724.0	-5.1%	337.7	-5.0%
KO	722	-6.4%	2,662.0	-6.2%	186.0	-6.1%
NW	1,634	8.6%	6,371.0	10.2%	447.4	10.9%
SB	2,349	2.5%	8,883.0	5.4%	638.9	5.2%
SE	2,036	4.7%	7,813.5	4.6%	551.9	5.8%

Historical Second Summer Session Enrollment



By Undergraduate Enrollment Status

	Full-Time UG		Part-Time UG	
	#	% Change	#	% Change
BL	2,031	-8.7%	2,245	-1.5%
IN	1,142	-0.4%	3,474	-9.4%
EA	139	9.4%	392	-6.9%
FW	175	3.6%	691	-7.5%
KO	89	-14.4%	416	-0.5%
NW	306	17.7%	780	6.0%
SB	293	7.7%	1,067	5.4%
SE	311	-7.4%	1,004	2.1%

By Residency

	Resident		Non-Resident	
	#	% Change	#	% Change
BL	4,766	-2.4%	3,020	0.6%
IN	7,665	-3.3%	393	-13.8%
EA	619	1.5%	17	-34.6%
FW	1,197	-7.6%	86	14.7%
KO	715	-6.0%	7	-30.0%
NW	1,608	8.6%	26	8.3%
SB	2,220	3.0%	129	-4.4%
SE	1,654	-2.4%	382	52.2%

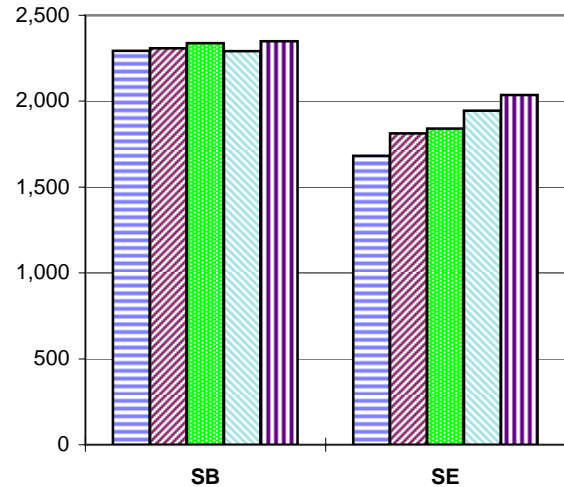
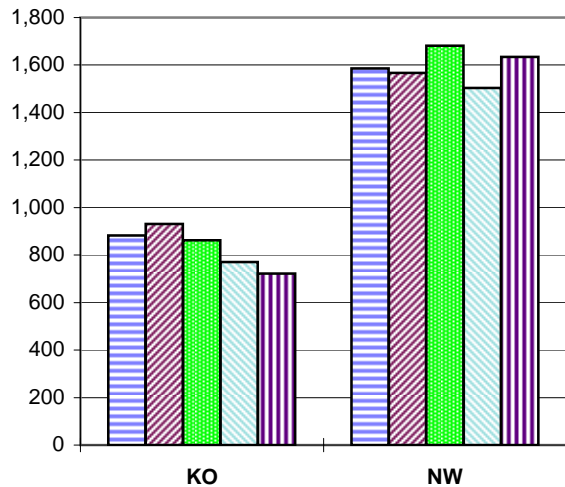
FW - IU Students Only

Campus Enrollment Summary

By Undergraduate Class Standing

	Freshman		Sophomore		Junior		Senior	
	#	% Change	#	% Change	#	% Change	#	% Change
BL	635	2.3%	409	-19.3%	1,047	-1.7%	2,185	-5.5%
IN	603	-22.0%	1,152	-12.7%	974	7.4%	1,887	-4.7%
EA	156	-3.1%	139	-15.8%	85	28.8%	151	-3.2%
FW	134	-39.1%	199	-1.5%	171	3.0%	362	10.4%
KO	98	-12.5%	147	-0.7%	109	19.8%	151	-11.7%
NW	171	3.6%	335	28.4%	185	-1.6%	395	3.4%
SB	226	-2.2%	344	15.4%	248	-19.7%	542	21.5%
SE	212	-8.2%	300	-6.5%	280	2.6%	523	5.9%

Historical Second Summer Session Enrollment



Graduate and Professional Enrollment

	Graduate		Professional	
	#	% Change	#	% Change
BL	1,825	-5.7%	344	2.7%
IN	1,059	7.6%	664	2.6%
EA	0	0.0%		
FW	284	4.4%		
KO	74	-7.5%		
NW	239	3.5%		
SB	560	7.3%		
SE	402	17.2%		

FW - IU Students Only

By Sex

	Male		Female	
	#	% Change	#	% Change
BL	3,622	-1.9%	4,164	-0.7%
IN	3,158	-2.1%	4,900	-5.1%
EA	171	-7.6%	465	3.1%
FW	421	-6.2%	862	-6.4%
KO	201	-5.6%	521	-6.6%
NW	510	12.6%	1,124	6.9%
SB	767	-0.4%	1,582	4.0%
SE	710	2.5%	1,326	5.9%

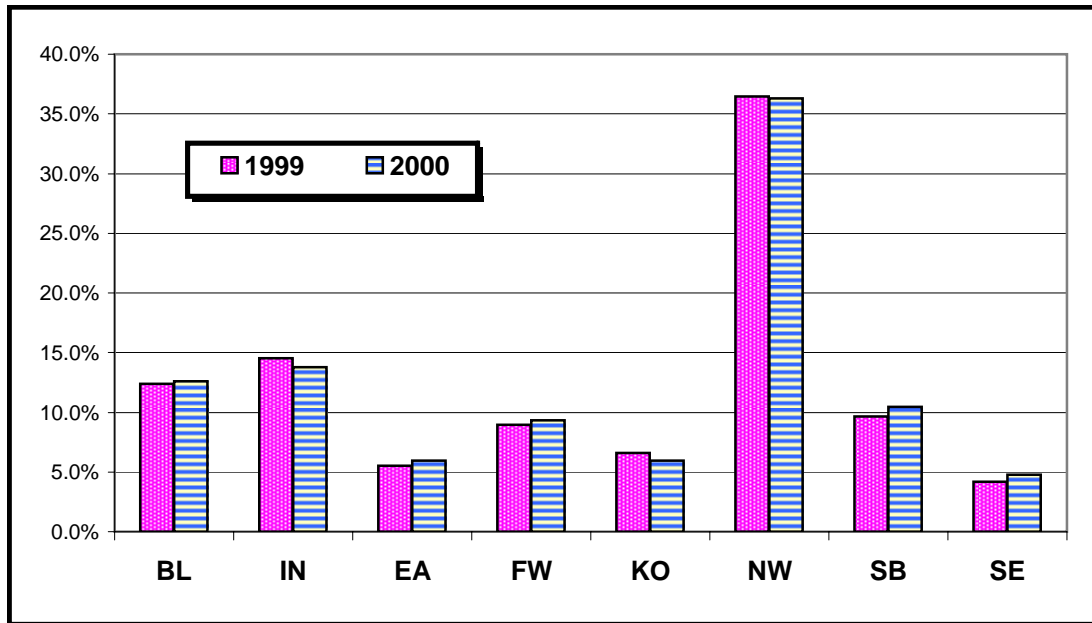
Campus Enrollment Summary

By Ethnicity

	American Indian			Asian			Black			Hispanic			Other		
	#	% Change	% of Campus Total	#	% Change	% of Campus Total	#	% Change	% of Campus Total	#	% Change	% of Campus Total	#	% Change	% of Campus Total
BL	29	26.1%	0.4%	298	11.6%	3.8%	479	-6.1%	6.2%	175	-0.6%	2.2%	6,805	-1.5%	87.4%
IN	18	5.9%	0.2%	253	-4.9%	3.1%	727	-10.4%	9.0%	113	-9.6%	1.4%	6,947	-3.1%	86.2%
EA	3	-40.0%	0.5%	5	0.0%	0.8%	25	19.0%	3.9%	5	25.0%	0.8%	598	-0.5%	94.0%
FW	5	25.0%	0.4%	24	-25.0%	1.9%	77	16.7%	6.0%	14	-33.3%	1.1%	1,163	-6.7%	90.6%
KO	3	0.0%	0.4%	10	25.0%	1.4%	19	-24.0%	2.6%	11	-26.7%	1.5%	679	-5.7%	94.0%
NW	3	-40.0%	0.2%	27	-10.0%	1.7%	434	9.3%	26.6%	129	11.2%	7.9%	1,041	8.9%	63.7%
SB	10	42.9%	0.4%	27	0.0%	1.1%	146	0.0%	6.2%	62	51.2%	2.6%	2,104	1.6%	89.6%
SE	7	133.3%	0.3%	11	-8.3%	0.5%	60	33.3%	2.9%	19	-9.5%	0.9%	1,939	4.0%	95.2%

FW - IU Students Only

Minority Enrollment as Percent of Total



Matriculants by Campus

	Heads		Hours	
	#	% Change	#	% Change
BL	1,103	14.4%	4,627.5	6.9%
IN	833	-5.7%	3,063.0	-6.0%
EA	98	25.6%	376.0	19.7%
FW	78	-21.2%	309.0	-13.7%
KO	92	-2.1%	352.0	4.1%
NW	134	-2.2%	535.0	-5.6%
SB	234	9.9%	853.0	12.8%
SE	208	27.6%	819.0	34.0%

Source Information

Todd Schmitz, Dir., Reporting & Research Services

Lisa Newlin-Blackwell, Management Reporting Analyst

Poplars 018: (812) 855-9893

<http://www.indiana.edu/~urr/>