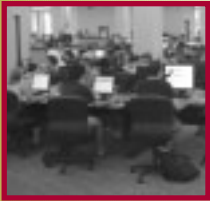


Fall

2004

The
SURCE
A newsletter for friends and supporters

A look inside...



■ Information Commons: One Year Later

■ Digital Leadership



■ Collections Spotlight

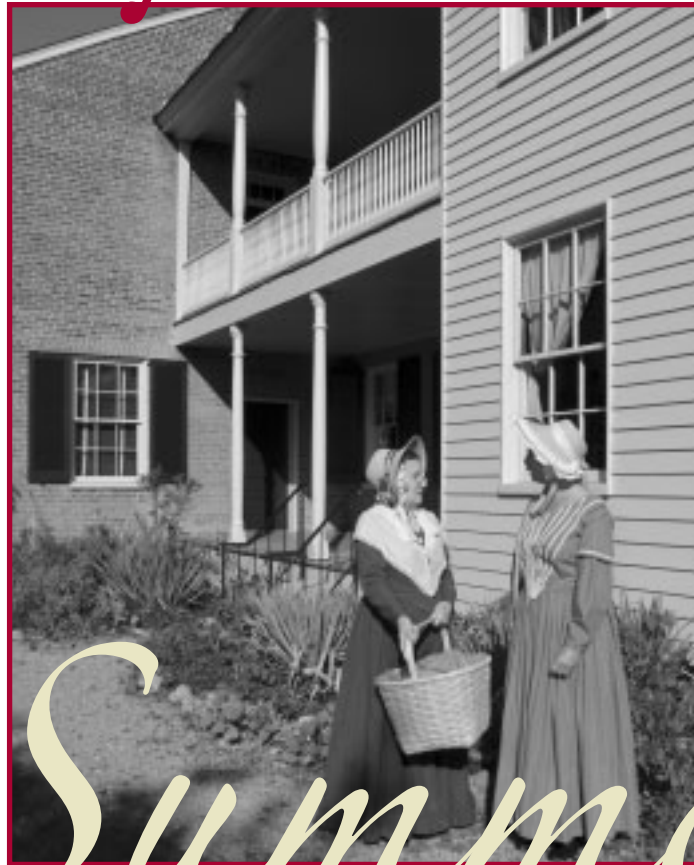


R_eflecting on History

Wylie House Museum offers visitors a glimpse of Indiana life in the 1840s.



Wylie House



Then Summer

Summer was an active time for the Wylies, whose 20-acre homestead required even more attention than the large house.

Now

We till the soil (of a much smaller garden) with the help of many hardworking volunteers. And this year, the shutters and siding of the house received a fresh coat of paint.

Dear Friend,

A year can be a measurement, a milestone, a cause for celebration.

This issue of *The Source* looks at a year at the Wylie House Museum. From season to season, we reinterpret Hoosier life in the 1840s, inspired by what we know of the Wylies through their correspondence and diaries.

The Information Commons is now a year old, and it has been extraordinarily successful in providing students the resources they expect from a research library: access to information and the technology to use it effectively. We will expand the IC to the second floor in the new year. Another milestone.

In this issue of *The Source*, you'll also read a bit about our collections, services, and spaces that make the IU Libraries—all 19 on the Bloomington campus—a place for intellectual discovery.

And, of course, this year we recognize our special friends who have contributed at least \$100 to the IUB Libraries. If you are among them, thank you. If you're not, please consider adding your name to our growing list.

Sincerely,

Suzanne E. Thorin
Ruth Lilly University Dean of
University Libraries and
Associate Vice President for
Digital Library Development

The Source is a publication of the Indiana University Bloomington Libraries for our donors and friends. The mission of the IUB Libraries is to support and strengthen teaching, learning, and research by providing the collections, services, and environments that lead to intellectual discovery.

www.libraries.iub.edu

Cover photo: Wylie House volunteer Carol Wise, dressed in period costume, imagines life as Margaret Wylie may have known it in the mid-1800s.

Photo by Kendall Reeves/Spectrum Studio.

I am feeling about used up at present canning cherries, we bought them for 50 & 60 cts for [a] wooden bucket — Cheaper then I ever knew them to be — We canned 12 gal and have about 1 gal dried. We used our fingers in stoning them notwithstanding the latest Yankee invention. Today I bought a few blackberries for only 5 cts per quart.... I must tell you what a nice quilt Mary pieced...had it quilted for only \$2.50

(Margaret Wylie Martin to Elizabeth Wylie McCalla, July 12th 1872)

4 July 1886 There were some good fireworks, and the electric lights were lighted up for the first time. This is quite an addition to the town.

Diary of Theophilus A. Wylie

Selected purchases from Thomas McCalla's general store in Bloomington (May through August 1844)

2 Brooms & stool	.30
1 yd Ribbon	.12
1 Pitch fork	.50
1 Pair Shoes	1.75
3/4 lb Tobacco	.35
2 Boxes Matches	.06
1 Hair Brush	.56
8 yds Calico	1.84
1 lb Tea	1.00
1 Vial Essence Lemon	.10
Castile Soap	.14

se Museum

Interprets history year round

From its stately front hall to the bedrooms upstairs, the Wylie House Museum reflects the history of one of Indiana University's most prominent families. Andrew Wylie, and then his half-cousin Theophilus, owned the gracious home. Andrew Wylie was IU's first president; Theophilus, a science professor and librarian.

Then

Autumn's harvest offered provisions for the months ahead, and the year's last warm days offered opportunities to prepare for winter.

Now

Autumn signals the return of IU students to Bloomington—and increased class visits to the museum to learn about architecture, American studies, and history.

28 November 1861 Thanksgiving day—a dull, dark, dusky, drizzly, dreary day as to weather. A gloomy day to me as to feeling. War raging on our borders, soldiers killed on the field and dying in the camp. Thanksgiving seems almost out of place.

(Diary of Theophilus A. Wylie)



- Commercial seed companies were just getting started in the mid-1800s. The Wylies saved seeds from their garden, just as Wylie House gardener Sherry Brunoehler does today. Sherry harvests more than 80 strains of seeds from the garden's heirloom plants and vegetables (some with colorful names like Ragged Jack Kale and Rattlesnake Watermelon) and this year collected 20 additional varieties. Sold at an annual fundraiser, Wylie House seeds and plants last year netted more than \$4,000.

Tell the boys that I think, as the weather is fine it might be well for them to top the corn on the field nearest home, the fodder will likely be needed for the cattle next winter. The ice house ought to [be] cleared of the straw: the saw dust in it should be dried & saved & more got & stored up for use.

(Andrew Wylie to Margaret Ritchie Wylie, September 22, 1850)



Continued on Next Page

Fall

Winter

Then

Shorter days and cold nights made for a long winter. Holiday celebrations were minimal. “Christmas was a dull day here,” writes Andrew Wylie’s daughter Elizabeth in 1847.

Now

We honor the season by hosting our popular Wylie House by Candlelight open house, just as we have for the past 16 years.

“It took a lot of wood to heat a house this size,” says Jo Burgess, director of the Wylie House Museum. Firewood came from the Wylie’s 160-acre property located south of town, current site of Bloomington High School South.

- Furnishings in the Wylie House Museum change with the season. We dress the house with woolen hand-woven coverlets on the beds, a wool carpet in the entry, and dried vegetables and winter squash in the kitchen.

Then

The universal season of renewal: a time to plant crops, clean house, and start fresh.

Now

At the museum last spring, we finished painting several interior rooms and ordered drapes with historically documented reproduction patterns for the dining room and downstairs bedroom.

All are here in good health, but tired out with cleaning, scrubbing & turning things in this big house topsy turvy & inside out — no girl to help. They join me in love to you & yours. They are, at last, breaking ground here on the railroad with great spirit. A considerable influx of new students: & all things seemingly prosperous but the fields & gardens & orchards which are sadly frostbitten.

(Andrew Wylie to John H. Wylie,
May 7, 1851)

Christmas was a dull day here. Nothing going on at all. I spent it in the kitchen cooking an extra good dinner & was tormented beyond measure by the boys who must have fired off a thousand crackers at my back... I was jumping & squealling all day & was heartily glad when night ended it.

Elizabeth Wylie to John H. Wylie,
Richmond, Indiana, February 12, 1847

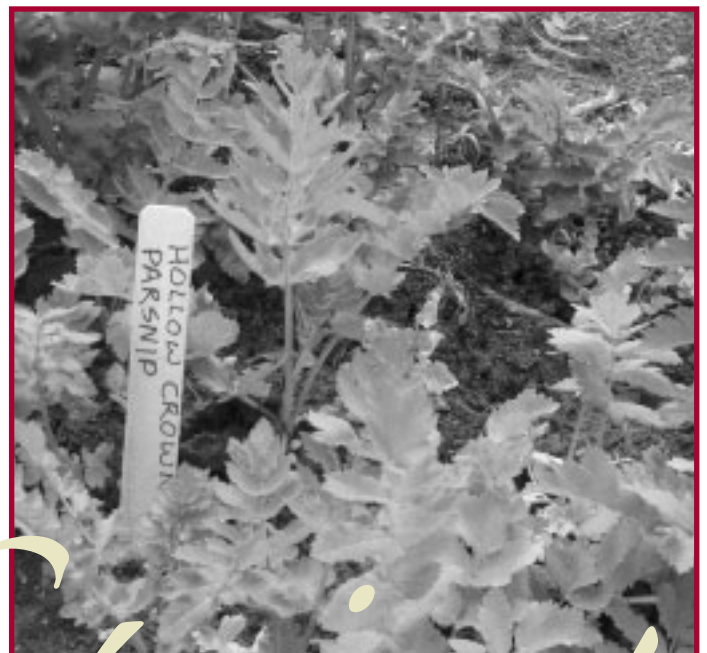
17 January 1841 Too cold to write... Ink frozen up.

Thawed a pen full in the candle to write this.

19 January 1841 Yesterday no fire in my room.

20 January 1841 No fire. Excuse me.

(Diary of Theophilus A. Wylie)



Spring

Have just got through house cleaning, & a few other disagreeable jobs, connected with house-keeping. ... it will be some time before we have garden sarce [sauce: colloquial term for cooked vegetables], the kind we like, shall have lettuce & onions in a few days, peas are 3 or 4 inches up, corn & potatoes have not yet appeared.

(Elizabeth Wylie McCalla to Jane M. Wylie,
April 29th 1863).

What's in a Name

IU's Information Commons Impresses Students in Bustling First Year

Editors of the *Indiana Daily Student* call it a “one-stop, work-until-you-wilt megaplex of technology.” A national library journal calls it the latest and greatest.

We call it the Information Commons.

Students simply love it. Since it opened last fall in IU's Main Library, the Information Commons has offered everything students need to succeed academically. The size of nearly six NCAA basketball courts, the Information Commons features more than 250 individual and group workstations, wireless networking, library reference services and resources, and technology consultants.

No wonder the Information Commons attracted more than 80 percent of all undergraduate students and 50 percent of graduate students in its first year of operation. Students especially enjoy the anytime access (open 24 hours a day, seven days a week) and the computers configured for easy collaboration. “It's the best place to do group work,” says student Ryan Krueger, who once met there with his School of Business classmates until 4:30 a.m. to beat a pressing deadline.

“It's a busy, active, thriving place,” says Suzanne Thorin, dean of the IU Libraries, of the light-filled Information Commons, which overlooks the campus arboretum. “I cannot tell you how wonderful it is to walk through the lobby at 8 in the morning and see students already settled in behind the workstations. I'm told it's the same at three in the morning.” The IC also houses a multimedia production laboratory. Using design software applications, scanners, and even a graphics-quality plotter, students can create posters to jazz up a class presentation or make personalized banners for a roommate's surprise birthday party. (No digital images? No problem! Students can




Eighty percent of all undergraduates visited the Information Commons. Usage peaks in the late evening and on Sundays.

check out digital cameras and video recorders purchased last year by the IU Libraries with a gift of \$12,300 from the IU Parents Fund.)

The Information Commons opened in August 2003 as a partnership of University Information Technology Services and the IU Libraries, and it brings together several other campus units. The university's Writing Tutorial Center offers on-site assistance for students who need help writing research papers and last year hosted more than 2,000 sessions. IU's Adaptive Technology Center occupies a prominent location at the entrance of the IC and provides technology-based solutions for students with disabilities by offering, for example, Braille printing and voice-recognition software.

What's more, the Information Commons created essential training space. Librarians boost students' research skills by holding drop-in workshops, and UITS offers its popular technology training workshops.

All good reasons why we also call the Information Commons a smashing success. 

Coming Soon: IC2

In September the Trustees of Indiana University approved architectural plans for an extension to the Information Commons. The Loft, or IC2, to be located on the second floor of the Main Library west tower, will convert an additional 9,600 square feet to help address the overwhelming response to the Information Commons.

It will include:

- 80+ computer workstations.
- Seating and electrical power for 100+ laptop users in individual and collaborative spaces
- Current, high-use core book collection
- Technology consultation during all open hours
- Library reference assistance
- Printing
- Wireless networking
- Quiet study space

On the Drawing Board: Research Commons

Plans are under way to create a Research Commons in the Main Library. This one-stop destination for research support on the IU Bloomington campus will allow faculty to consult with a wide range of experts about substantive aspects of their research, both print and digital. Faculty members will gain knowledge about new and traditional research tools and digital content as well as learn how to use, create, manipulate, and preserve research data. From identifying ways to leverage statistical software and exploiting the power of mass storage to consulting on matters of technology transfer and intellectual property, researchers will benefit from an environment that addresses their intellectual and practical needs.

MILE *by* MILE

IU librarians
fill the
shelves
one book
at a time



*“It’s really about the students.
I want to provide the resources
they need to their classwork
and research.”*

ANGELA COURTNEY
SUBJECT LIBRARIAN FOR ENGLISH AND
AMERICAN LITERATURE

More than 4.2 million books fill the stacks at IUB’s Main Library. Laid end to end, they would extend from the IU Bloomington campus to Washington, D.C.

Last year we added 9.7 miles (another 64,862 titles).

The sheer number of books is impressive, but it is the individual books, carefully selected over many years, that make the miles add up to a research destination for students, faculty and friends.

Librarians take many factors into consideration when choosing books and other materials. For example, they consider the curriculum of a school or subject area and look for books that will support the university’s teaching mission. When a new academic area leads faculty and students to new subjects, librarians assist in that work by collecting a body of research.

Angela Courtney, subject librarian for English and American Literature, is working on a project that developed out of collaboration with a faculty member in the English Department. In teaching Nineteenth Century Literature, the faculty member wanted her students to branch out from English and American



literature and explore other Anglophone literature. Though the library collection is strong in modern Anglophone literature, it was not as strong in nineteenth century Anglophone literature. “It stuck in my head that this was something we should work on,” says Courtney.

Courtney received the 2003-2004 White Professional Development Award and a grant from IU’s Office of International Programs which she will use to travel to Australia and New Zealand for this project. While she is there, she will meet with librarians and vendors who are experts in the literature of those countries and will develop an organized approach to building IU’s collection.

Because the budget is not unlimited, librarians also consider how much a resource costs and compare that with how much it will be used either now or in the future. “This has become a more important criterion than ever before because money is tighter,” says Cecile Jagodzinski, director of collection development and digital scholarship.

The librarians at IUB also choose books with an eye toward maintaining strong collections. As Jagodzinski says, “IUB has



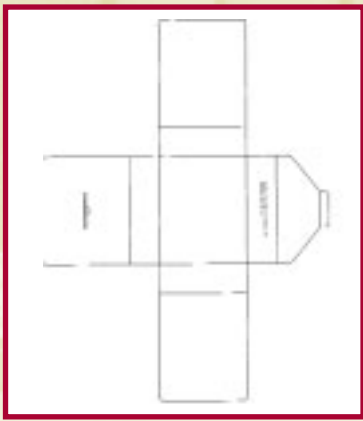
collections with great breadth and depth. We want to continue to build upon the strengths that we are renowned for.”

Sometimes, though, it is not the number of books, but the little pockets of material that make for a strong collection. “We have one of the best Somali Collections in the world,” says Jagodzinski. It is even stronger than collections in Somalia because many of their resources have been destroyed during the conflict there. In addition, the Tibetan collection at IUB is one of the best in the country. The library is also strong in African Studies, Folklore and even Portuguese.

The IUB libraries strive to be all encompassing. “It’s really about the students,” Courtney says. Often graduate students are on the cutting edge of up and coming

trends, so by working with them and with faculty members, librarians can make the choices necessary to create and maintain a strong collection at IU. As Courtney says, “I want them to have what they need here.” 🔍

Irreplaceable Collections



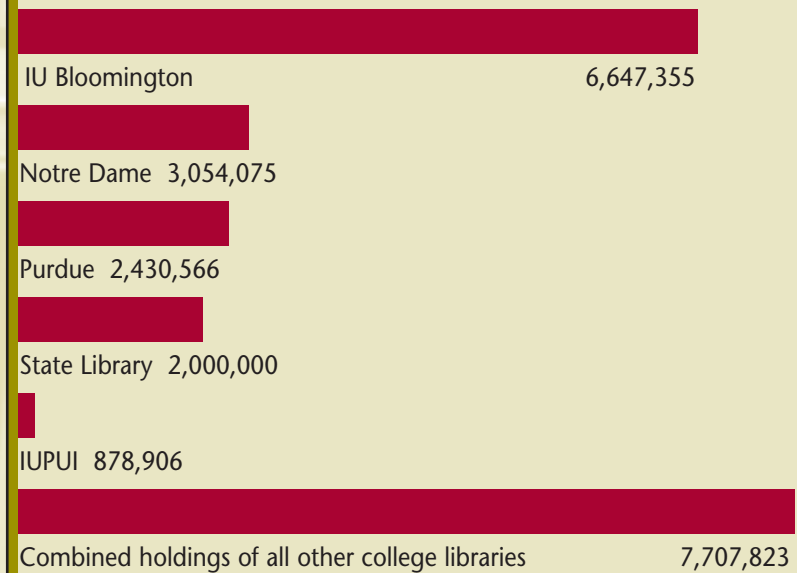
What is This?

Employees in the IUB Libraries Preservation Department began operating a box-making machine in November 2001, and have since produced over 30,000 enclosures for the Auxiliary Library Facility and collections on campus.

Boxes protect materials from dust and light, fluctuations in environmental conditions, and from handling during transfer to and from the ALF. Custom-made enclosures produced in the E. Lingle Craig Preservation Laboratory also protect materials such as Lilly Library sheet music, manuscript collections, the Bradley Film Collections, and Lee Hamilton's Congressional papers.

The image above is the layout of a flattened box, drawn by a computer program that creates a template based on a book's measurements. The box-making machine cuts and scores acid-free paperboard, which, when folded and filled, will enclose yet another book in the ALF.

Indiana Libraries



- **Comprehensive Collections** Ranked the 12th largest collection in the country among academic research libraries, Indiana University Bloomington Libraries consist of more than 6.6 million books (more than the collections of Purdue and Notre Dame combined), nearly 30,000 electronic journals and databases, 83,000 electronic books, 7.2 million manuscripts, 596,000 cartographic materials, 253,000 sound recordings, and 39,000 films and videos.
- **Valuable Assets** Books in the Main Library, collected over a period of more than 125 years, are a valuable state asset. A conservative (and rough) estimate of the replacement cost—based on the today's average cost of \$50 for an academic title and an additional \$5.25 for cataloging—well exceeds \$232 million. Even if funds were available, we could never replace materials now out-of-print.
- **Books Matter** Books form the core collections of an academic research library. Collected carefully over decades, books support learning and research in every academic discipline.
- **Yes, Students Use Books** Despite the growing number of materials available online—and the demand for electronic resources—books remain essential to research and scholarship. Students, faculty, and residents of Indiana use the university's books. IU's circulation rate is the highest of the 15 largest university research libraries in the country. 🔍

Indiana University Receives Grant to Train Digital Librarians

Selected to Host National Conference

Indiana University's Digital Library Program and the School of Library and Information Science received a \$939,000 grant from the Institute of Museum and Library Services to educate librarians for work in digital library programs.

IU will partner with the University of Illinois at Urbana-Champaign to create the first research-based, comprehensive master's-level program for training information specialists in digital library development. Both institutions will offer internships for students to gain experience with digital library projects.

The granting agency also selected Indiana University to host a national conference planned by representatives from schools of library and information science that are developing digital management programs, with a goal of developing recommendations for core competencies in digital information management.

"Being selected to host a national conference speaks to our standing as one of the nation's leading digital library programs," says Suzanne Thorin, Ruth Lilly University Dean of University Libraries and Associate Vice President for Digital Library Development. "We were already a leader, but this opportunity pushes us to the forefront. I am very proud of the program we have developed at IU."

Digital libraries provide online collections and services, just as traditional libraries acquire, organize, and give access to print collections. Librarians who create and manage digital collections and services must know about imaging technologies, optical character recognition, indexing and database technologies, programming, and how people use the Web.

The grant will leverage the strengths of the IU School of Library and Information Science, ranked sixth in the nation in library science education, and the IU Digital Library Program, renowned as a leader in research and development through projects such as VARIATIONS, which marked the national introduction of digitized music distributed over a computer network.

"This award recognizes the school's many strengths in both digital library teaching and research," says Blaise Cronin, dean and Rudy Professor of Information Science at IU's School of Library and Information Science. "We have been offering graduate courses in digital libraries for almost a decade and during that time IU has received several grant awards from the National Science Foundation to support digital library-related research."



Javed Mostafa, associate dean at the School of Library and Information Science, and Kristine Brancolini, head of IU's Digital Library Program, are co-directors of the grant.

The Institute of Museum and Library Services is an independent federal grant-making agency dedicated to creating and sustaining a nation of learners by helping libraries and museums serve their communities. In 2002, first lady Laura Bush, a former librarian, announced the funding program, which seeks to recruit and prepare librarians for the 21st century. 🔍

For more information: <http://www.dlib.indiana.edu/>
<http://www.slis.indiana.edu/>

Around the Stacks



Kathleen Cruikshank




Philip Ponella



Virginia Sojdehei

- **Lynda Fuller Clendenning**, associate director of technical services and head of acquisitions, was elected secretary of the Acquisitions Section of the Association for Library Collections and Technical Services Division of the American Library Association.
- **Kathleen Cruikshank** was appointed political papers specialist at the Lilly Library. She previously served as the visiting manuscript librarian and political papers specialist at the Lilly Library.
- **Mary Wallace Davidson**, who previously served as head of the music library, will continue her service to the IU Libraries as research librarian at the Lilly Library until the end of December. She will create bibliographic records for IU's contributions to the Répertoire International des Sources Musicales, specifically to the database comprising manuscripts by individual composers written after 1600 (and before about 1850).
- **Harriette Hemmasi**, executive associate dean of libraries, has been selected to be a fellow in the Academic Leadership Program (ALP) presented by the Committee on Institutional Cooperation (CIC). ALP was established in 1987 to develop the leadership and managerial skills of faculty and professional staff on CIC campuses who have demonstrated exceptional ability and administrative promise.
- Lilly Library Director **Breon Mitchell** received the 2004 Helen and Kurt Wolff Translator's Prize for the best literary translation from German into English published in the United States in 2003. He translated Uwe Timm's *Morenga*, a novel about the German-Herero war in South West Africa (now Namibia) in 1905.
- Associate librarian **Andrea Morrison** was lead co-author of *International Government Information and Country Information*, an authoritative guide published this summer that offers a subject approach to the resources provided by international government organizations, national governments, and other foreign information sources.
- "E-journal Management Systems: Trends, Trials, and Trade-Offs," an article co-written by **Taemin Park**, associate librarian, Technical Services, was one of the top 10 downloaded articles for the publication *Serials Review* between July and December 2003.
- **Philip Ponella** was appointed director of the music library. He joined IU from the University of Rochester, where he was the director of Information Technology Services/Academic Technology. Philip previously served as director of technology and music production at the Eastman School of Music, where he also worked as head of public services in the prestigious Sibley Music Library.
- **Jennifer Riley** was appointed metadata librarian in the Digital Library Program. Jennifer had been the digital media specialist in the Digital Library Program since 2000. Additionally, an article she co-authored, "Recommended Best Practices for Digital Image Capture of Musical Scores," was selected as a Literati Award for Excellence 2004 as the winning paper from the 2003 volume of *OCLC Systems & Services*.
- **Virginia Sojdehei** was appointed personnel librarian after serving since 1997 as a reference librarian at Gulf Coast Community College in Panama City, Fla. Prior to this appointment, she held positions as the personnel librarian and public services staff librarian at the University of Maryland-College Park Libraries. Virginia received her bachelor of arts in education and her MLS from Indiana University Bloomington.

- **Steven Sowell**, coordinator for the campus libraries and head of the education library, has taken a new position as chief of staff for Habitat for Humanity of Monroe County. Gwen Pershing has agreed to serve as interim head of the Education Library.
- Dean **Suzanne Thorin** was elected to the Board of Directors of the Association of Research Libraries. Additionally, her article “Global Changes in Scholarly Communication” will be published by Springer-Verlag. The article came out of three workshops— Knowledge Creation; Knowledge Management; Concepts, Theories, Practices, Trends, and Case Studies—she presented at the International Conference on Strategic Planning for e-Learning and Digital Content held at Feng Chia University, Taichung, Taiwan, in December 2003.
- **John Walsh** has been appointed associate director for projects and services and will coordinate the Digital Library Program (DLP) on all eight campuses. John previously served as the manager of electronic text technologies for UITS. He was responsible for developing, implementing, and maintaining the technical infrastructure for LETRS (Library Electronic Text Resource Service) where he has worked since 1994. He is active in the TEI (Text Encoding Initiative) Consortium and has written and presented on a number of topics related to digital libraries and electronic text.
- **Brian Winterman** has accepted the position of assistant Chemistry/Life Sciences librarian. He will provide reference service and library instruction and serve as collection manager of the nursing fund and liaison to the nursing faculty. Previously, Brian was the campus library coordinator in IUB’s Life Sciences Library.
- **Carolyn Walters** has become director of public services for the IUB Libraries. She has a long and distinguished record of service at IU. Carolyn previously served as the head of the Information Commons and Undergraduate Services, and she led a number of initiatives including co-chairing the IC Steering Committee and helping design the plan and services of this successful partnership with UITS. Diane Dallis is serving as interim head of the IC and Undergraduate Services. 



Carolyn Walters

Consider Making a Gift to the IU Libraries Through Your Will

Planned Giving Provides Far-Reaching Benefits

Theophilus Wylie left an important legacy for Indiana University through his innovation, vision, and scholarship. To honor these qualities, as well as his service as university librarian, the Theophilus Adam Wylie Heritage Society was established, recognizing Dr. Wylie’s dedication to sustaining the IU Libraries for future generations. The Wylie Heritage Society honors planned-giving donors past, present, and future.

Private support through planned giving can make a substantial impact on the future of IU Libraries. These gifts provide funds for collection development, endowed librarian positions, service initiatives, technology enhancement, and facility improvements.

If you are considering a planned gift to the IU Libraries, please call Susan Yoon, Executive Director of Development, at (812) 855-4182.



OUR DONORS

IUB Libraries Donors List

Every donation to the IUB Libraries is valuable, and we extend our sincere gratitude to all donors. Limited space in this publication, however, requires that we acknowledge only those individuals and organizations who have contributed \$100 or more to the Indiana University Bloomington Libraries between July 1, 2003 and June 30, 2004.

\$10,000 and Greater

A. Frederic Banda
Peter & Nancy S. Boerner
E. Lingle Craig
Rosetta Gernon
Judd & Renee R. Hubert
Lazzara Family Foundation
B. Breon & Lynda F. Mitchell
Oxbridge Corporation
Jill O. Tarlau
Thinkfun, Inc.
Leila Vennewitz
Walden University, Inc.

\$1,000 - \$9,999

David A. & Margery M. Byrne
John M. & Anita Schafer Cauffman
Robert & Joanne Crown Income
Charitable Fund
DaimlerChrysler Corporation Fund
Eli Lilly and Company
Stephen W. & Elaine Ewing Fess
Fidelity Investments Charitable
Gift Fund
Joyce K. Findley
Florentine Finishes
Patricia G. Hentges
Michael S. & Judith P. Humnicky
James S. & Margaret M. Irsay
Arthur L. & Lora H. Jeffries
Connie S. Kummer
The Lanham Family Foundation, Inc.
Charles E. & Rosemary McKee
Lanham
John M. Lee
Mimi Lee
Lockheed Martin Corporation
Jerry W. & Phyllis E. McCullough
Roy R. & Elizabeth I. Morgan
Dwight R. Muir
Scott R. & Ruth A. Sanders
Russell P. & Barbara A. Selvitella
Catherine A. Smith
Thomas T. Solley
Jeffrey Thom
John Thom
Christine B. Turnbull
Michael E. & Nancy E. Uslan
Herbert S. & Nancy White

\$500 - \$999

Patricia F. Auchter
Diane E. Beaver
Ronald L. & Mary Ann Bennett
Stephen S. & Annette J. Bunjan
Anne C. Campbell
Christopher W. & Linda C. Davis
Kimberly S. Engber
Michael D. & Cheryl A. Engber
Sara A. Engber
Joan R. Ewing
Carl W. & Patricia J. Goltart
Raul J. & Antonia G. Guerrero
Warren Haas & Karen L. Behnke
Eugene A. Heim
Alan A. & Lesley M. Hodge
Frank N. & Athena R. Hrisomalos
Johnson & Johnson Family of Cos.
Contrib. Fund
Mark A. & Kathryn F. Jones
James & Janice A. Koday
Bruce M. Lisman
Sally Luaces
John L. & Sandra L. Miesel
Pauline K. Morgan
Richard A. & Sandra L. Mueller
Roger G. & Ruth Newton
Pearson Education
Frank G. & Mary K. Slocumb
State Farm Companies Foundation
Eugenie T. Sullivan
Robert E. Sullivan
Temple-Inland Foundation
Suzanne E. Thorin
James R. Whitehead
Jacob C. Wu & Lily S. Bork
Susan J. Yoon & John T. Keith

\$200 - \$499

Accenture Foundation, Inc.
Clara J. Adams
Salih J. & Amal A. Altoma
Scott R. & Cathleen J. Anderson
Richard M. Bailey
Abram M. & Stephanie D. Barch
John E. & Jane A. Barto
Jason W. Bear
Bruce B. Benson
Bill C. & Patricia P. Brown Foundation
Laura A. Bornholdt
Bill C. & Patricia P. Brown
E. Stewart & Margaret S. Carlson

Cong Chen
Wen-Ching & Nien-Hwa Chen
Linda L. Dahlberg
Deloitte Foundation
Charles & Ann R. Dobbs
Tania F. Doran
Dow AgroSciences, LLC
Steven M. & Kimberly D. Eller
J. Christopher & Joanne D. Eustis
Ford Motor Company Fund
Gregory J. Gajda
William H. & Nancy J. Grimes
Richard L. & Phyllis A. Hackler
Anne W. Hennessy
Linda L. Hildebrand
Dennis L. Hoffman
George Frank & Elizabeth R. Holland
David V. & Janet D. Hommel
Gregory A. & Donna L. Huffman
B. J. Irvine
Corinne E. Johnson
Dennis & Cynthia A. Judd
Rachel J. Keith
Kenneth V. Kennedy
Daniel M. & Margaret L. Kirwan
Merritt E. & D. Naomi Lawlis
Peter & Sheila S. Lindenbaum
Erik L. Lindseth
D. Paul & Rosemary H. Lloyd
Thomas J. & Sandra S. Locke
Gary A. & Diane K. Lybarger
Glenn E. Meyer
Marian J. Mills
Fredric R. & Susan A. Mishkin
Ward W. & Frances C. Moore
Motorola Foundation
Marsha A. Mullin
George R. & Jennifer J. Murray
Timothy D. Noel
Vera M. O'Lessker
Jerry F. O'Malley
Warren & Isabelle E. Otter
Bill R. & Amy M. Padgett
Leonard M. Phillips & Mary H.
Wennerstrom
David W. & Cynthia A. Ping
Jeffrey L. & Patricia J. Plonski
R. Michael & Mary J. Reed
Keith B. Ritter & Brenda L. Heaster
Paul H. Runyon
Marc N. & Pamela Scheinman
Don L. & Violet D. Smolinske
Brian M. & Angela L. Southern

Leonard V. & Vivien E. Sparacino
Thomas J. Stewart
G. Henry & Mardi C. Swain
James A. Trilling
Verizon Foundation
James M. & Marcie A. Warden
M. Robert & Lois Anne Warden
Timothy J. Warfield
Edna J. Weddell
Ellen K. Wilson
Christopher T. & Dena D. Winkler
Heinz & Elizabeth H. Wolf
Peter & Teresa A. Wolf

\$100 - \$249

Marc A. & Cristina M. Abbagnaro
Beth Abney
Richard E. Adams & Linda E. Francis
Aegon Transamerica Foundation
Alan F. Snyder
Richard & Deborah Z. Altschuler
Ethan D. & Sandra D. Alyea
Larry D. Anderson
Robert Anthoine
Fern E. Arnold
Michael S. & Janee Aronoff
Vincent A. Arvizu
Karen D. Ault
Stephen A. & Susan H. Backer
Bank of America Foundation
Richard D. Barlow
David R. Bartolini
Carol F. Batty
Bauman Rare Books
David Bauman
Rose M. Bell
Geraldine M. Benson
James R. & Rita R. Berghoff
Thora E. Berry
Bernardo G. Blanco
Tony & Judith M. Bleses
Lee A. & Barbara A. Bohman
Charles R. Bonham
Diane R. Boni
John F. & Patricia Bonsib
Richard E. Bowman
Stephen H. Brackman
Robert & Mary Branson
Lisa A. Bronson
Brucoli Clark Layman, Inc.
Tyrone M. Buckingham
Karen G. Burch
Kitty L. Burkhart

Mary Linda Bush
Stephen C. & Barbara D. Butz
Alan G. Campbell
Rebecca Cape
Gary L. Carruth
Jeanne M. Carter
William F. Cassel
CFC, Inc.
Barbara J. Chaffee
Roy L. & Roberta J. Charleswood
Martha J. Chevance
Nelda Christ Kahn
Michael P. Clark
Ronald G. & Darlene R. Clark
Bernard Clayton
Erin K. Comeau
Brian & Janae A. Condit
Thomas R. & Sue A. Connon
Richard E. Cooper & Mary S.
Donaldson
James M. Cox
Steven F. Crites
Karen Crum
CSX Corporation
Patricia E. Cummings
Robert J. Czubik
Alfred & Linda K. David
Jay F. Davidson
E. Brian & Darlene E. Davis
William & Karen E. Day
Lu Anne Dayment
Richard E. & Barbara A. Dell
George B. & Carol A. Derner
Myrna A. Dial
Darrin M. & Cherie L. Dolehanty
Albert M. Donato III
Donald S. & Diane K. Drucker
Mary F. Drummond
James E. & Susan H. Dutmers
Susan K. Dyer
Margaret V. Ekstrom
Virginia P. Elia
Elisabeth P. Leist Living Trust
Susan F. Engert
James A. & Jane M. Enzor
Raymond Epstein
James & Margarete Faber
John B. & Barbara G. Fieser
Robert G. & Barbara G. Fisher
Eugene D. & Jane M. Fletchall
Alan L. & Janet S. Flowers
Marjorie Fogarty
Richard E. Ford

Daryl M. Forgey
 Fred J. & Suzanne Forte
 James S. & Mary K. Foster
 James D. & Janet G. Foulke
 Robert A. & Merry C. Fourhman
 Stephen A. Free
 James & Frances J. French
 Kevin & Cheryl A. Freund
 Mark L. & Mary C. Friedman
 Robert L. Fuller & Lynda Fuller
 Clendenning
 Bonnie C. Gardner
 Gregory L. & Paula I. Garner
 James L. Gates
 Virginia R. Geleta
 Ellen L. Geringer
 Steve N. Gerol
 Howard & Virginia Ollis Gest
 Richard W. & Anne C. Gill
 GMAC Mortgage
 M. Cristina Gonzalez
 Carol A. Goodemote
 Susan E. Grans
 Greater Kanawha Valley Foundation
 Dennis S. & Jill I. Green
 Kevin S. Greene
 Keith A. Grogg & Vivian M. Hare
 Kenneth R. R. & Diana Gros Louis
 Pamela L. Grunwald
 Robert G. & Melia J. Gulde
 Jayne Gyure
 John F. & Diane K. Haines
 Marianne T. Hanley
 Terrence J. Hannigan
 Kirk F. Hansen
 Robert E. & Nancy M. Hansen
 Walter S. & Christine Hanson
 Charlene A. Harb
 Betty J. Harper
 Fred B. & Wilma E. Hartzell
 Norman M. & Pat L. Hayes
 Prima Heideman
 Ronald N. Hermeling
 William J. & Carol A. Hertz
 Carl & Connie Heyde
 James R. & Shirley Hipsher
 William P. & Louise W. Hoffman
 Hiram A. & Leigh A. Holbrook
 Tracy L. Honn
 David L. & Danise M. Hoover
 George A. Hopkins
 Steven Howarth & Sabrina A. Stanley
 Donald R. Hulsey
 Jay B. & Marcia L. Hunt
 Marlin Hunt
 IBM International Foundation
 Illinois Tool Works Foundation
 David P. & Marianne E. Inman
 Robert R. & Phyllis J. Irwin
 Phillip M. & Debra A. Jackson
 Martha L. Jennings
 Andrew J. & Betty Johnson
 Lora D. Johnson
 Lynn B. Jongleux
 Jack & Marcia A. Joy
 Norman O. & Barbro C. Jung
 James H. Justus
 Jaan & Roberta Kangilaski
 Christina Kazanas
 Robert A. Keeton
 Howard H. & Helga Keller
 Robert C. & Catherine Kellogg
 Maurice W. & Aura Charlene Kendall
 Grace W. Kennedy
 Douglas A. & Josephine F. Kibbee
 Dan W. & Karen L. Kiel
 Vicki J. Killion
 John C. Kincaid
 Alexis P. Kisteneff
 Christopher & Margaret E. Kleinhenz
 J. Andrew Knot
 Albert R. & Suzanne P. Koch
 Michael R. Koleszarik
 Barbara B. Koons
 Donald W. & Jean A. Kornack
 Robert E. Koslow
 Elizabeth M. Kottlowski
 Charles D. & Chree M. Kysar
 Doug & Marilyn LaBarr
 Matthew & Jennifer Laherty
 Robert & Patricia Lamb
 Peter W. Lawrence
 Elisabeth P. Leist
 Ross M. Lence
 Nancy S. Leonard
 Bret P. & Linda W. Liebeno
 Lilly Endowment, Inc.
 Joseph C. & Caroline Lin
 Norma W. Lincoln
 Ming-Yie Ling
 Scott S. & Martha E. Lloyd
 Janice A. Lovett
 Lubrizol Foundation
 Judith Lyons
 P. A. Mack
 Stephen Maguire
 Robert & Jean Major
 Michael T. & Lisa A. Mann
 Marathon Ashland Petroleum LLC
 Eric S. Marcus
 Marjorie Fogarty Trust
 Richard A. Markley
 David J. & Susan E. Martaus
 Martayan Lan, Inc.
 Marc S. Martinez & Susan A. Price
 James R. Mattingly & Judith Shure
 Perry J. Maull
 Kara A. McBride
 Carol A. McCafferty
 Laura Hibbets McCaffery
 Ralph W. McCaffery
 William B. McCarthy
 Jerry A. & Jane P. McIntosh
 John S. & Virginia A. Mead
 Robert C. & Mae Belle Lehnhoff Meili
 Elaine H. Mensh
 Barbara W. Merriam
 Robert F. Mertz
 Theodore Milenkoff
 Glenn L. & Brenda M. Miller
 Julie A. Miller
 Louise Miller
 Clara M. Millett
 Harold & Joy D. Minton
 Eric L. Mitter & Sharon Holliday
 James E. Murphy
 Kathryn M. Murphy
 William R. & Vera M. Murphy
 Stephen M. & Terri Nagler
 NCR Foundation
 James W. Needham
 Edith D. Neimark
 John K. & Mary M. Newton
 Stephan D. & Janalyn S. Nowling
 William P. O'Dea
 Alton M. Okinaka
 Joseph L. & Sharon S. Olson
 Lois C. Olsrud
 Robert H. & Marylyn Oppenheim
 Debra J. Oswald
 Jack Page & Sarah R. Cottingham
 Louise A. Paxton
 Stanley C. & Linda J. Pendowski
 Duane K. Peterson
 M. Jeanne Peterson
 Harold L. & Shirley D. Pfrang
 Philip B. & Maxine J. Philips
 James B. Pickering
 Janice M. Powers
 Procter & Gamble Fund
 Nevin W. & Dorothy Lockman Raber
 Beverly D. Railsback

William S. Reese
John & Susan J. Rhoades
Homer C. Rice
Charles L. Richards
David S. Richardson
Donald L. & Loretta M. Richert
Gregory A. Robbins
T. Michael & Connie Jo Robinson
Thomas A. & Martha A. Roblee
John H. Rogers
Jodi Roisman
Dennis R. & Judith A. Roseth
RR Donnelley Foundation
Elaine M. Rueff
John W. & D. Patricia Ryan
Darell L. & Nancy L. Sayer
Massimo Scalabrini
Roger L. & Ann E. Scales
Chris J. Scelonge
Clifford A. Schacht
Regina A. Schaffner
Richard A. Scheider
Clara B. Schmidt
James A. & Ruth A. Schrems
Stephen A. Schrock
William A. & Barbara A. Schroeder
Richard C. & Claudia D. Seifert
Marsha L. Selmer
Jerald L. & Linda R. Sendelweck
George T. & Mary A. Sewell
Larry D. & Judith R. Shamp
John A. Shanks
Ted P. & Beverly Sheldon
Anthony W. & Jan B. Shipp
John W. & Martha S. Shuck
Erdine M. Simic
Vivian A. Simmons
Greg A. & Lisa T. Slawson
Maribeth Slebodnik
Slocum Puzzle Foundation
Marlow J. & Phyllis A. Smethurst
Andrew W. & Patricia A. Smith
C. Dean & Suzanne M. Smith
Cynthia D. Smith
Jane A. Smith
Robert D. & Margaret A. Smith
So. IN. Daylily Hosta Daffodil
Iris Society
Alan B. & Kathryn J. Somers
Mary I. Southard
Leora D. Sparks
Sophie A. Sperry
Mary H. Stanger
Margaret J. Stevenson

Joyce Stith
Kathy L. Stolz
Richard B. & Virginia A. Stoner
James E. Strange & Valerie L. Elliott
Sara S. Sturgeon
William G. Susling
Glendora R. Swaim
Charles E. & Patricia A. Syester
David M. & Margaret W. Szewczyk
Phillip & Mary A. Tabor
John J. Thompson
Katheryn C. Thompson
Terrence K. & Catherine B. Thompson
Sara J. Traycoff
T. Rowe Price Associates
Foundation, Inc.
Michael A. True
Richard A. Turpin
University Women's Club
Antiques Group
Richard S. & Frances A. Underhill
Vincent J. Valentino &
Catherine M. Jones
James A. & Barbara Victor
Tadas E. Viskanta
Mark W. & Jill Vogt
Vulcan Materials Company
Samuel S. & Hannah G. Wakim
Richard L. & Lucee A. Wallace
Marc E. & Linda E. Weinbaum
Roy & Wendy Weinberger
Stephen Weissman
Harvey O. & Dorothy Wellnitz
Wells Fargo Foundation
Gloria D. Westfall
Cynthia M. Whitacre
William E. & Katherine D. White
Monta S. Wilkins
Brian W. Williams
John Williams
Hana B. Wilson
Marilyn J. Wilson
William A. & B. Hannele Wilson
James M. & Nancy A. Winebrenner
W. Robert & Bonny E. Wise
Mark & Linda L. Wisen
Jeffrey A. Wolin & Elizabeth A. Stirratt
Joyce I. Woller
James R. Wood
Eldon C. & Maxine I. Woods
Norbert L. & Evelyn Woolley
Janet W. Wright
Sarah L. Wurdlow
Elizabeth A. Wylie

Melanie Wylie
Ximenes Rare Books, Inc.
Stanley S. & Constance L. Yaffe
James P. Ziliak & Gena M. Mark
Curt R. Zimansky & Joan Cadden

Planned Giving

Anonymous (6)
Frank R. & Anne A. Berson
William R. & Terry L. Cagle
Henry A. Fischel
Kenneth M. Hanig
John & Hilda Jay
M. Ellen Jay
Jack & Marcia A. Joy
Ruth Mueller & Clifford Alfred
Kleymeyer
Dallas W. Loos & Nycha R. Schlegel
Ignacio Navarrete & Hester A. Bradbury
Lee Nichols
Jean A. Potts
Murray & Sue Robinson
Odette F. Shepherd
George P. Smith, II
Mary H. Stanger
Patricia A. Steele
Suzanne E. Thorin
Robert J. Waller
Joseph T. Wehlacz
Herbert S. White
Louise F. Zimek

Our goal is to list each of our valued contributors with complete accuracy. Despite our best efforts, however, errors do sometimes occur. In that event, we would appreciate being notified of them. Please call or write Jennifer Young Rigsby, Development Assistant, Indiana University Libraries, 812-855-1628 or jyrigsby@indiana.edu

Corporate Matching Gifts

More than 1,000 American companies have adopted corporate matching gift plans to help support higher education. The IUB Libraries benefit from such plans, every year receiving contributions from generous employers who support the interests of their employees. Under matching gift plans, the corporation matches gifts made by employees, officers, directors, and in some cases spouses and/or retired employees, officers, or directors. Consult your company's personnel or community relations department for guidelines.



Upcoming Event

Wylie House by Candlelight

December 4
5 p.m. – 8 p.m.

Join in this traditional holiday open house featuring light refreshments, musical entertainment, and costumed hostesses.

Ruth Lilly University Dean of University Libraries
and Associate Vice President for Digital Library
Development: Suzanne E. Thorin

Executive Director of Development and
External Relations: Susan Yoon

Writer/Editor: Eric Bartheld

Contributing Writer: Anne Lucke

Development Assistant: Jennifer Young-Rigsby;
Allison Corn

Art Direction: Shelle Design Inc.

Photography: Kendall Reeves/Spectrum Studio;
Dennis Chamberlin; John McDermott

If you have questions, corrections or comments
concerning this publication, please contact IU
Libraries Development Office, Main Library
234, Bloomington, IN 47405, (812) 856-4817
or e-mail ebarthel@indiana.edu

- African American Cultural Center Library
- Business/School of Public and Environmental Affairs Library
- Chemistry Library
- Cyclotron Facility Library
- Education Library
- Fine Arts Library
- Geography and Map Library
- Geology Library
- Health, Physical Education, and Recreation Library
- Louis A. Weil Jr. Journalism Library
- Life Sciences Library
- Lilly Library
- Main Library
- William and Gayle Cook Music Library
- Optometry Library
- School of Library and Information Science Library
- Swain Hall Library
- University Archives
- Wylie House Museum

Libraries Boost Access to Full-Text Articles

New Hyperlinking Software Is "Like Gold"

IU-Link, a new service launched by the IUB Libraries that promises greater convenience for researchers at all levels, streamlines information retrieval by linking online article citations to full text.

Citations in 113 of the IUB Libraries' largest and most popular databases now link seamlessly to full-text articles in more than 20,000 online journals. In instances when the full-text is not available, researchers can link directly to IUCAT, the online catalog, to see if the university owns the journal or book, or can request delivery of the item through interlibrary loan.

"Central to our expansive collection of databases is a system that directs researchers to where they need to go," reference librarian Jian Liu says of the software he helped implement at IU. "It's a locally managed service that knows our collections. Interconnectivity is the key to its success."

Librarians say the increasing availability of full-text articles online has changed how students approach the research process. "People are no

longer satisfied with indexes and abstracts," says Liu, who, through his work at the reference desk, sees a growing number of students who expect access to full-text resources. "This system opens up a lot of possibilities," he says. "We can now direct students to the best, most specialized databases available to them with the confidence they will find the online articles."

"Linking to full text can be like finding gold," says Julie Bobay, associate director of collection development and digital scholarship. "For advanced researchers, IU-Link provides the quickest means to find articles. It removes the tedious work and makes the best use of their time."

During the past five years, librarians have reallocated resources, primarily from print to electronic, in support of desktop access to reliable scholarly materials in digital form. Between 1999 and 2003, the Libraries increased their allocation for electronic resources from roughly \$387,000 to more than \$2 million, representing an increase of more than 500 percent.

Office of the Dean
Indiana University Libraries
Administration, Main Library
1320 East Tenth Street
Bloomington, IN 47405

Nonprofit Organization
U.S. Postage
Paid
Permit No. 2
Bloomington, IN 47401