



This report provides views on persistence to the second semester for the incoming full-time, beginner (FTB) cohorts of 2003, 2004, and 2005. In summary, the overall beginner and transfer retention rate for the 2005 cohort is level with the 2004 cohort rate but slightly below the mark set by the 2003 cohort. The FTB rate has declined steadily over the years represented. Students pursuing bachelor's degrees have been retained at a rate that is one percentage point below last year's rate and by 1.5 percentage points less than the 2003 cohort. African American FTB rates are 2.6 percentage points and Hispanic rates are 1.6 percentage points below the five year average.

The proportion of FTB students achieving a first semester GPA of 2.0 or less has been on the increase. In 2003 that proportion was 18%, in 2004 - 20.2%, and with the 2005 cohort that group comprised 22.4% of the FTB cohort. At the university wide level, the retention rate for these low-performing students declined while the rates for students obtaining a GPA above 2.0 have increased. There are some notable exceptions to this trend at IUPUI, East, and Kokomo.

An appendix is available which provides views on the entire beginner cohorts and part-time beginner cohort subsets. These and other reports are available via our website at <http://www.indiana.edu/~urr>.

To protect student privacy, cells with a "began" number of ten or less are masked. As always, your comments and suggestions are welcomed.

Persistence to the Second Semester by Cohort Status

	2003 Cohort			2004 Cohort			2005 Cohort			5 Yr Avg
	began	ret'd	%	began	ret'd	%	began	ret'd	%	
Beginner	14,088	12,394	88.0%	13,422	11,737	87.4%	13,799	12,061	87.4%	87.3%
Transfer	4,153	3,374	81.2%	5,096	4,074	79.9%	5,016	4,002	79.8%	80.3%
Exclusions	1			3			0			
Overall	18,241	15,768	86.4%	18,518	15,811	85.4%	18,815	16,063	85.4%	85.7%

Full-Time Beginners Only (FTB)

	2003 Cohort			2004 Cohort			2005 Cohort			5 Yr Avg
	began	ret'd	%	began	ret'd	%	began	ret'd	%	
FTB	12,543	11,364	90.6%	12,107	10,894	90.0%	12,737	11,376	89.3%	90.3%
FTB as % of Beginners	89.0%	91.7%		90.2%	92.8%		92.3%	94.3%		
FTB as % of Overall	68.8%	72.1%		65.4%	68.9%		67.7%	70.8%		

Part-Time Beginners Only (PTB)

	2003 Cohort			2004 Cohort			2005 Cohort			5 Yr Avg
	began	ret'd	%	began	ret'd	%	began	ret'd	%	
PTB	1,545	1,030	66.7%	1,315	843	64.1%	1,062	685	64.5%	65.7%
PTB as % of Beginners	11.0%	8.3%		9.8%	7.2%		7.7%	5.7%		
PTB as % of Overall	8.5%	6.5%		7.1%	5.3%		5.6%	4.3%		

Source Information

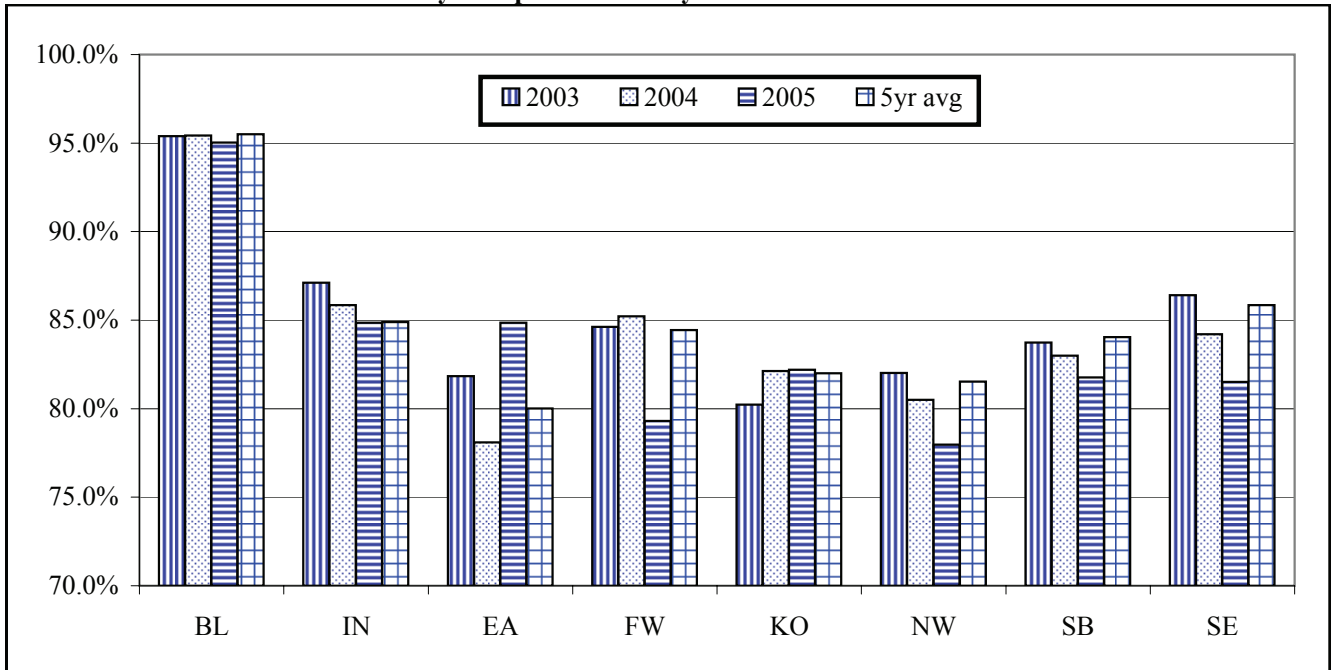
University Reporting & Research (812) 855-9893 email: urr@indiana.edu
This and other official reports are available at <http://www.indiana.edu/~urr>

IU

Persistence to the Second Semester - Full-Time Beginners Only (FTB)

	2003 Cohort			2004 Cohort			2005 Cohort			5 Yr Avg.
	began	ret'd	%	began	ret'd	%	began	ret'd	%	
FTB	12,543	11,364	90.6%	12,107	10,894	90.0%	12,737	11,376	89.3%	90.3%
By Intended Degree:										
Bachelor's	11,725	10,653	90.9%	11,278	10,200	90.4%	12,311	11,007	89.4%	90.7%
Other	818	711	86.9%	829	694	83.7%	426	369	86.6%	83.9%
By Ethnicity:										
African Amer.	701	611	87.2%	804	692	86.1%	859	717	83.5%	86.1%
Hispanic	320	290	90.6%	347	306	88.2%	351	306	87.2%	88.8%
Other	11,522	10,463	90.8%	10,956	9,896	90.3%	11,527	10,353	89.8%	90.6%
Students By Age:										
<20	11,352	10,409	91.7%	11,070	10,068	90.9%	11,781	10,646	90.4%	91.4%
20-21	519	419	80.7%	456	364	79.8%	459	356	77.6%	78.6%
22-24	238	185	77.7%	244	191	78.3%	197	144	73.1%	76.6%
25+	434	351	80.9%	337	271	80.4%	300	230	76.7%	80.3%
By Sex:										
Male	5,279	4,751	90.0%	5,174	4,636	89.6%	5,475	4,883	89.2%	89.9%
Female	7,264	6,613	91.0%	6,933	6,258	90.3%	7,262	6,493	89.4%	90.5%
By Residency:										
Resident	9,914	8,889	89.7%	9,683	8,619	89.0%	10,079	8,887	88.2%	89.1%
Non-Res.	2,629	2,475	94.1%	2,424	2,275	93.9%	2,658	2,489	93.6%	94.5%
By High School Rank:										
Top 10%	1,507	1,450	96.2%	1,422	1,355	95.3%	1,524	1,455	95.5%	96.2%
11%-25%	2,626	2,453	93.4%	2,420	2,236	92.4%	2,416	2,216	91.7%	93.6%
26%-50%	3,605	3,256	90.3%	3,449	3,093	89.7%	3,398	3,014	88.7%	90.4%
Bot 50%	1,864	1,548	83.0%	1,911	1,552	81.2%	1,898	1,524	80.3%	82.6%
By GPA in the First Fall Semester:										
3.0 - 4.0	6,351	6,152	96.9%	5,737	5,575	97.2%	5,725	5,568	97.3%	97.0%
2.0 - 2.99	3,939	3,726	94.6%	3,927	3,706	94.4%	4,162	3,938	94.6%	94.8%
< 2.0	2,253	1,486	66.0%	2,443	1,613	66.0%	2,850	1,870	65.6%	66.8%
By SAT Groups:										
1200+	1,850	1,777	96.1%	1,733	1,663	96.0%	2,035	1,940	95.3%	95.9%
800-1190	7,267	6,646	91.5%	7,292	6,593	90.4%	7,364	6,665	90.5%	91.1%
400-790	680	581	85.4%	618	515	83.3%	541	441	81.5%	84.9%

Persistence to the Second Semester by Campus - FTB Only



Bloomington

Persistence to the Second Semester by Cohort Status

	2003 Cohort			2004 Cohort			2005 Cohort			5-Yr Avg.
	began	ret'd	%	began	ret'd	%	began	ret'd	%	
Beginner	6,784	6,468	95.3%	6,350	6,053	95.3%	6,949	6,595	94.9%	95.3%
Transfer	788	731	92.8%	876	793	90.5%	838	757	90.3%	91.6%
Exclusions	0			2			0			
Overall	7,572	7,199	95.1%	7,226	6,846	94.7%	7,787	7,352	94.4%	94.9%

Full-Time Beginners Only (FTB)

	2003 Cohort			2004 Cohort			2005 Cohort			5-Yr Avg.
	began	ret'd	%	began	ret'd	%	began	ret'd	%	
FTB	6,747	6,440	95.4%	6,307	6,019	95.4%	6,912	6,568	95.0%	95.5%
FTB as % of Beginners	99.5%	99.6%		99.3%	99.4%		99.5%	99.6%		
FTB as % of Overall	89.1%	89.5%		87.3%	87.9%		88.8%	89.3%		
By Intended Degree:										
Bachelor's	6,649	6,346	95.4%	6,248	5,963	95.4%	6,890	6,546	95.0%	95.5%
Other	98	94	95.9%	59	56	94.9%	22	22	100.0%	90.7%
By Ethnicity:										
African Amer.	291	268	92.1%	351	328	93.4%	409	374	91.4%	93.6%
Hispanic	130	124	95.4%	155	145	93.5%	145	137	94.5%	95.9%
Other	6,326	6,048	95.6%	5,801	5,546	95.6%	6,358	6,057	95.3%	95.6%
Students By Age:										
<20	6,609	6,317	95.6%	6,188	5,909	95.5%	6,793	6,460	95.1%	95.6%
20-21	97	90	92.8%	85	80	94.1%	98	88	89.8%	92.4%
22-24	20	16	80.0%	19	18	94.7%	13	13	100.0%	80.5%
25+	21	17	81.0%	15	12	80.0%	**	**	87.5%	79.6%
By Sex:										
Male	2,968	2,828	95.3%	2,899	2,774	95.7%	3,125	2,979	95.3%	95.6%
Female	3,779	3,612	95.6%	3,408	3,245	95.2%	3,787	3,589	94.8%	95.4%
By Residency:										
Resident	4,348	4,150	95.4%	4,114	3,928	95.5%	4,543	4,318	95.0%	95.3%
Non-Res.	2,399	2,290	95.5%	2,193	2,091	95.3%	2,369	2,250	95.0%	95.8%
By High School Rank:										
Top 10%	1,110	1,085	97.7%	979	953	97.3%	1,135	1,096	96.6%	97.5%
11%-25%	1,638	1,570	95.8%	1,433	1,360	94.9%	1,432	1,365	95.3%	95.7%
26%-50%	1,844	1,736	94.1%	1,670	1,576	94.4%	1,676	1,570	93.7%	94.5%
Bot 50%	227	210	92.5%	218	201	92.2%	273	255	93.4%	93.6%
By GPA in the First Fall Semester:										
3.0 - 4.0	4,156	4,068	97.9%	3,560	3,486	97.9%	3,656	3,583	98.0%	98.0%
2.0 - 2.99	1,988	1,907	95.9%	2,060	1,976	95.9%	2,350	2,270	96.6%	96.6%
< 2.0	603	465	77.1%	687	557	81.1%	906	715	78.9%	80.1%
By SAT Groups:										
1200+	1,578	1,537	97.4%	1,448	1,416	97.8%	1,711	1,654	96.7%	97.1%
800-1190	3,843	3,654	95.1%	3,757	3,567	94.9%	4,006	3,795	94.7%	95.3%
400-790	113	105	92.9%	124	114	91.9%	106	96	90.6%	94.0%

University Reporting & Research

IUPUI

Persistence to the Second Semester by Cohort Status

	2003 Cohort			2004 Cohort			2005 Cohort			5-Yr. Avg.
	began	ret'd	%	began	ret'd	%	began	ret'd	%	
Beginner	2,826	2,345	83.0%	2,720	2,228	81.9%	2,746	2,247	81.8%	80.3%
Transfer	1,534	1,213	79.1%	2,027	1,594	78.6%	1,823	1,415	77.6%	78.3%
Exclusions	1			1			0			
Overall	4,360	3,558	81.6%	4,747	3,822	80.5%	4,569	3,662	80.1%	79.6%

Full-Time Beginners Only (FTB)

	2003 Cohort			2004 Cohort			2005 Cohort			5-Yr. Avg.
	began	ret'd	%	began	ret'd	%	began	ret'd	%	
FTB	2,343	2,040	87.1%	2,303	1,977	85.8%	2,409	2,044	84.8%	84.9%
FTB as % of Beginners	82.9%	87.0%		84.7%	88.7%		87.7%	91.0%		
FTB as % of Overall	53.7%	57.3%		48.5%	51.7%		52.7%	55.8%		
By Intended Degree:										
Bachelor's	2,072	1,802	87.0%	2,030	1,743	85.9%	2,224	1,877	84.4%	84.9%
Other	271	238	87.8%	273	234	85.7%	185	167	90.3%	84.5%
By Ethnicity:										
African Amer.	196	167	85.2%	225	198	88.0%	255	204	80.0%	84.4%
Hispanic	54	47	87.0%	62	53	85.5%	70	60	85.7%	84.7%
Other	2,093	1,826	87.2%	2,016	1,726	85.6%	2,084	1,780	85.4%	85.0%
Students By Age:										
<20	1,991	1,752	88.0%	1,989	1,733	87.1%	2,091	1,815	86.8%	86.4%
20-21	141	115	81.6%	125	93	74.4%	146	111	76.0%	74.4%
22-24	82	65	79.3%	78	62	79.5%	73	50	68.5%	75.6%
25+	129	108	83.7%	111	89	80.2%	99	68	68.7%	80.1%
By Sex:										
Male	981	843	85.9%	928	778	83.8%	992	821	82.8%	83.9%
Female	1,362	1,197	87.9%	1,375	1,199	87.2%	1,417	1,223	86.3%	85.6%
By Residency:										
Resident	2,295	1,999	87.1%	2,246	1,929	85.9%	2,322	1,967	84.7%	85.0%
Non-Res.	48	41	85.4%	57	48	84.2%	87	77	88.5%	82.6%
By High School Rank:										
Top 10%	211	198	93.8%	240	224	93.3%	197	177	89.8%	93.5%
11%-25%	450	399	88.7%	424	374	88.2%	504	443	87.9%	89.3%
26%-50%	771	674	87.4%	781	664	85.0%	775	659	85.0%	85.5%
Bot 50%	549	461	84.0%	584	488	83.6%	576	479	83.2%	81.5%
By GPA in the First Fall Semester:										
3.0 - 4.0	945	911	96.4%	898	871	97.0%	942	911	96.7%	95.9%
2.0 - 2.99	797	752	94.4%	776	730	94.1%	738	689	93.4%	93.7%
< 2.0	601	377	62.7%	629	376	59.8%	729	444	60.9%	60.7%
By SAT Groups:										
1200+	135	121	89.6%	156	138	88.5%	188	170	90.4%	89.3%
800-1190	1,428	1,266	88.7%	1,466	1,280	87.3%	1,567	1,371	87.5%	86.7%
400-790	160	141	88.1%	159	140	88.1%	144	116	80.6%	85.6%

University Reporting & Research

East

Persistence to the Second Semester by Cohort Status

	2003 Cohort			2004 Cohort			2005 Cohort			5-Yr Avg.
	began	ret'd	%	began	ret'd	%	began	ret'd	%	
Beginner	474	354	74.7%	406	310	76.4%	372	299	80.4%	74.4%
Transfer	112	84	75.0%	150	127	84.7%	177	122	68.9%	79.0%
Exclusions	0			0			0			
Overall	586	438	74.7%	556	437	78.6%	549	421	76.7%	75.4%

Full-Time Beginners Only (FTB)

	2003 Cohort			2004 Cohort			2005 Cohort			5-Yr Avg.
	began	ret'd	%	began	ret'd	%	began	ret'd	%	
FTB	319	261	81.8%	274	214	78.1%	284	241	84.9%	80.0%
FTB as % of Beginners	67.3%	73.7%		67.5%	69.0%		76.3%	80.6%		
FTB as % of Overall	54.4%	59.6%		49.3%	49.0%		51.7%	57.2%		
By Intended Degree										
Bachelor's	232	191	82.3%	185	147	79.5%	229	189	82.5%	81.6%
Other	87	70	80.5%	89	67	75.3%	55	52	94.5%	76.4%
By Ethnicity										
African Amer.	14	10	71.4%	**	**	90.0%	**	**	80.0%	78.9%
Hispanic	**	**	100.0%	**	**	100.0%	**	**	100.0%	85.7%
Other	303	249	82.2%	262	203	77.5%	271	230	84.9%	80.0%
Students By Age										
<20	204	169	82.8%	199	156	78.4%	206	174	84.5%	82.1%
20-21	38	30	78.9%	22	16	72.7%	28	21	75.0%	70.1%
22-24	19	16	84.2%	16	10	62.5%	13	13	100.0%	75.3%
25+	58	46	79.3%	37	32	86.5%	37	33	89.2%	79.7%
By Sex										
Male	116	82	70.7%	88	63	71.6%	105	86	81.9%	73.0%
Female	203	179	88.2%	186	151	81.2%	179	155	86.6%	83.7%
By Residency										
Resident	266	221	83.1%	236	180	76.3%	233	195	83.7%	79.7%
Non-Res.	53	40	75.5%	38	34	89.5%	51	46	90.2%	82.7%
By High School Rank										
Top 10%	11	10	90.9%	**	**	100.0%	14	14	100.0%	94.9%
11%-25%	25	24	96.0%	31	27	87.1%	29	26	89.7%	89.0%
26%-50%	54	48	88.9%	50	47	94.0%	55	50	90.9%	90.3%
Bot 50%	65	54	83.1%	84	58	69.0%	71	53	74.6%	75.9%
By GPA in the First Fall Semester										
3.0 - 4.0	147	139	94.6%	122	114	93.4%	112	110	98.2%	94.0%
2.0 - 2.99	74	70	94.6%	62	56	90.3%	87	82	94.3%	90.7%
< 2.0	98	52	53.1%	90	44	48.9%	85	49	57.6%	52.8%
By SAT Groups										
1200+	**	**	50.0%	**	**	100.0%	**	**	80.0%	80.0%
800-1190	71	66	93.0%	100	81	81.0%	115	98	85.2%	87.2%
400-790	39	33	84.6%	31	23	74.2%	30	29	96.7%	85.2%

University Reporting & Research

Fort Wayne

Persistence to the Second Semester by Cohort Status

	2003 Cohort			2004 Cohort			2005 Cohort			5-Yr. Avg.
	began	ret'd	%	began	ret'd	%	began	ret'd	%	
Beginner	869	714	82.2%	993	810	81.6%	893	700	78.4%	81.2%
Transfer	530	407	76.8%	537	401	74.7%	690	531	77.0%	75.9%
Exclusions	0			0			0			
Overall	1,399	1,121	80.1%	1,530	1,211	79.2%	1,583	1,231	77.8%	79.4%

Full-Time Beginners Only (FTB)

	2003 Cohort			2004 Cohort			2005 Cohort			5-Yr. Avg.
	began	ret'd	%	began	ret'd	%	began	ret'd	%	
FTB	706	597	84.6%	839	715	85.2%	807	640	79.3%	84.4%
FTB as % of Beginners	81.2%	83.6%		84.5%	88.3%		90.4%	91.4%		
FTB as % of Overall	50.5%	53.3%		54.8%	59.0%		51.0%	52.0%		
By Intended Degree										
Bachelor's	634	533	84.1%	723	614	84.9%	797	631	79.2%	84.2%
Other	72	64	88.9%	116	101	87.1%	**	**	90.0%	86.9%
By Ethnicity										
African Amer.	29	25	86.2%	43	32	74.4%	31	16	51.6%	76.1%
Hispanic	16	16	100.0%	14	12	85.7%	27	19	70.4%	90.4%
Other	661	556	84.1%	782	671	85.8%	749	605	80.8%	84.7%
Students By Age										
<20	588	505	85.9%	729	623	85.5%	725	581	80.1%	85.3%
20-21	53	39	73.6%	48	41	85.4%	43	35	81.4%	78.0%
22-24	28	23	82.1%	30	24	80.0%	17	10	58.8%	76.6%
25+	37	30	81.1%	32	27	84.4%	22	14	63.6%	83.4%
By Sex										
Male	285	235	82.5%	341	291	85.3%	334	263	78.7%	82.7%
Female	421	362	86.0%	498	424	85.1%	473	377	79.7%	85.7%
By Residency										
Resident	687	581	84.6%	811	693	85.5%	775	614	79.2%	84.5%
Non-Res.	19	16	84.2%	28	22	78.6%	32	26	81.3%	81.1%
By High School Rank										
Top 10%	44	41	93.2%	59	48	81.4%	50	45	90.0%	91.0%
11%-25%	111	97	87.4%	122	109	89.3%	120	99	82.5%	88.3%
26%-50%	186	166	89.2%	242	211	87.2%	236	194	82.2%	85.9%
Bot 50%	251	200	79.7%	257	209	81.3%	258	193	74.8%	80.8%
By GPA in the First Fall Semester										
3.0 - 4.0	263	246	93.5%	326	308	94.5%	291	270	92.8%	93.9%
2.0 - 2.99	236	218	92.4%	255	233	91.4%	239	210	87.9%	92.6%
< 2.0	207	133	64.3%	258	174	67.4%	277	160	57.8%	63.0%
By SAT Groups										
1200+	26	22	84.6%	47	41	87.2%	28	25	89.3%	85.9%
800-1190	466	400	85.8%	585	498	85.1%	201	163	81.1%	85.1%
400-790	76	66	86.8%	72	57	79.2%	27	18	66.7%	83.3%

University Reporting & Research

Fort Wayne - IU Students only

Kokomo

Persistence to the Second Semester by Cohort Status

	2003 Cohort			2004 Cohort			2005 Cohort			5-Yr Avg.
	began	ret'd	%	began	ret'd	%	began	ret'd	%	
Beginner	557	429	77.0%	466	374	80.3%	476	364	76.5%	78.7%
Transfer	184	146	79.3%	236	181	76.7%	211	150	71.1%	75.4%
Exclusions	0			0			0			
Overall	741	575	77.6%	702	555	79.1%	687	514	74.8%	77.8%

Full-Time Beginners Only (FTB)

	2003 Cohort			2004 Cohort			2005 Cohort			5-Yr Avg.
	began	ret'd	%	began	ret'd	%	began	ret'd	%	
FTB	383	307	80.2%	358	294	82.1%	382	314	82.2%	82.0%
FTB as % of Beginners	68.8%	71.6%		76.8%	78.6%		80.3%	86.3%		
FTB as % of Overall	51.7%	53.4%		51.0%	53.0%		55.6%	61.1%		
By Intended Degree										
Bachelor's	310	250	80.6%	292	239	81.8%	366	301	82.2%	82.3%
Other	73	57	78.1%	66	55	83.3%	16	13	81.3%	80.6%
By Ethnicity										
African Amer.	**	**	87.5%	**	**	77.8%	**	**	42.9%	75.8%
Hispanic	**	**	83.3%	**	**	66.7%	**	**	0.0%	75.0%
Other	369	295	79.9%	346	285	82.4%	374	311	83.2%	82.2%
Students By Age										
<20	315	257	81.6%	312	259	83.0%	321	267	83.2%	83.0%
20-21	30	20	66.7%	18	13	72.2%	25	20	80.0%	68.6%
22-24	**	**	50.0%	12	9	75.0%	11	7	63.6%	81.3%
25+	34	28	82.4%	16	13	81.3%	25	20	80.0%	81.4%
By Sex										
Male	119	90	75.6%	120	95	79.2%	131	106	80.9%	78.0%
Female	264	217	82.2%	238	199	83.6%	251	208	82.9%	84.0%
By Residency										
Resident	380	305	80.3%	358	294	82.1%	381	313	82.2%	82.2%
Non-Res.	**	**	66.7%	**	**	n/a	**	**	100.0%	54.5%
By High School Rank										
Top 10%	17	15	88.2%	15	13	86.7%	20	20	100.0%	93.3%
11%-25%	72	59	81.9%	70	64	91.4%	55	44	80.0%	88.3%
26%-50%	126	103	81.7%	124	105	84.7%	124	107	86.3%	84.3%
Bot 50%	127	99	78.0%	120	92	76.7%	147	116	78.9%	75.4%
By GPA in the First Fall Semester										
3.0 - 4.0	120	112	93.3%	105	100	95.2%	104	97	93.3%	94.3%
2.0 - 2.99	138	127	92.0%	144	137	95.1%	139	130	93.5%	92.3%
< 2.0	125	68	54.4%	109	57	52.3%	139	87	62.6%	56.3%
By SAT Groups										
1200+	**	**	100.0%	15	9	60.0%	22	17	77.3%	83.8%
800-1190	244	200	82.0%	234	202	86.3%	249	216	86.7%	84.9%
400-790	23	18	78.3%	25	18	72.0%	24	21	87.5%	76.0%

University Reporting & Research

Northwest

Persistence to the Second Semester by Cohort Status

	2003 Cohort			2004 Cohort			2005 Cohort			5-Yr Avg.
	began	ret'd	%	began	ret'd	%	began	ret'd	%	
Beginner	860	681	79.2%	762	581	76.2%	604	457	75.7%	78.5%
Transfer	260	202	77.7%	329	252	76.6%	350	280	80.0%	77.2%
Exclusions	0			0			0			
Overall	1,120	883	78.8%	1,091	833	76.4%	954	737	77.3%	78.2%

Full-Time Beginners Only (FTB)

	2003 Cohort			2004 Cohort			2005 Cohort			5-Yr Avg.
	began	ret'd	%	began	ret'd	%	began	ret'd	%	
FTB	662	543	82.0%	605	487	80.5%	472	368	78.0%	81.5%
FTB as % of Beginners	77.0%	79.7%		79.4%	83.8%		78.1%	80.5%		
FTB as % of Overall	59.1%	61.5%		55.5%	58.5%		49.5%	49.9%		
By Intended Degree										
Bachelor's	520	423	81.3%	475	385	81.1%	413	318	77.0%	81.3%
Other	142	120	84.5%	130	102	78.5%	59	50	84.7%	82.1%
By Ethnicity										
African Amer.	109	89	81.7%	108	74	68.5%	81	65	80.2%	76.7%
Hispanic	82	71	86.6%	72	61	84.7%	61	49	80.3%	81.0%
Other	471	383	81.3%	425	352	82.8%	330	254	77.0%	82.9%
Students By Age										
<20	473	401	84.8%	461	387	83.9%	366	292	79.8%	83.8%
20-21	73	55	75.3%	60	37	61.7%	39	25	64.1%	70.1%
22-24	41	27	65.9%	28	20	71.4%	22	16	72.7%	73.4%
25+	75	60	80.0%	56	43	76.8%	45	35	77.8%	79.8%
By Sex										
Male	244	193	79.1%	229	181	79.0%	192	148	77.1%	78.6%
Female	418	350	83.7%	376	306	81.4%	280	220	78.6%	83.3%
By Residency										
Resident	656	539	82.2%	597	482	80.7%	466	365	78.3%	81.6%
Non-Res.	**	**	66.7%	**	**	62.5%	**	**	50.0%	72.2%
By High School Rank										
Top 10%	56	51	91.1%	31	29	93.5%	28	28	100.0%	91.2%
11%-25%	87	76	87.4%	86	72	83.7%	72	63	87.5%	89.0%
26%-50%	186	167	89.8%	162	140	86.4%	122	96	78.7%	85.9%
Bot 50%	252	193	76.6%	255	199	78.0%	201	146	72.6%	77.6%
By GPA in the First Fall Semester										
3.0 - 4.0	239	222	92.9%	201	194	96.5%	156	151	96.8%	95.5%
2.0 - 2.99	213	199	93.4%	188	170	90.4%	157	136	86.6%	91.5%
< 2.0	210	122	58.1%	216	123	56.9%	159	81	50.9%	58.2%
By SAT Groups										
1200+	36	33	91.7%	14	14	100.0%	19	16	84.2%	92.8%
800-1190	356	309	86.8%	368	306	83.2%	264	215	81.4%	84.1%
400-790	134	103	76.9%	106	78	73.6%	77	60	77.9%	77.6%

University Reporting & Research

South Bend

Persistence to the Second Semester by Cohort Status

	2003 Cohort			2004 Cohort			2005 Cohort			5 Yr. Avg.
	began	ret'd	%	began	ret'd	%	began	ret'd	%	
Beginner	895	714	79.8%	910	714	78.5%	1,006	794	78.9%	79.4%
Transfer	398	310	77.9%	549	413	75.2%	529	414	78.3%	76.7%
Exclusions	0			0			0			
Overall	1,293	1,024	79.2%	1,459	1,127	77.2%	1,535	1,208	78.7%	78.6%

Full-Time Beginners Only (FTB)

	2003 Cohort			2004 Cohort			2005 Cohort			5 Yr. Avg.
	began	ret'd	%	began	ret'd	%	began	ret'd	%	
FTB	707	592	83.7%	706	586	83.0%	806	659	81.8%	84.1%
FTB as % of Beginners	79.0%	82.9%		77.6%	82.1%		80.1%	83.0%		
FTB as % of Overall	54.7%	57.8%		48.4%	52.0%		52.5%	54.6%		
By Intended Degree										
Bachelor's	646	537	83.1%	628	522	83.1%	735	610	83.0%	83.8%
Other	61	55	90.2%	78	64	82.1%	71	49	69.0%	86.6%
By Ethnicity										
African Amer.	27	21	77.8%	42	33	78.6%	47	34	72.3%	80.4%
Hispanic	24	20	83.3%	27	22	81.5%	32	28	87.5%	82.7%
Other	656	551	84.0%	637	531	83.4%	727	597	82.1%	84.3%
Students By Age										
<20	574	487	84.8%	565	472	83.5%	682	568	83.3%	85.5%
20-21	57	43	75.4%	59	51	86.4%	46	30	65.2%	77.1%
22-24	28	24	85.7%	38	28	73.7%	36	26	72.2%	79.2%
25+	48	38	79.2%	44	35	79.5%	42	35	83.3%	78.1%
By Sex										
Male	290	238	82.1%	274	219	79.9%	340	282	82.9%	82.2%
Female	417	354	84.9%	432	367	85.0%	466	377	80.9%	85.4%
By Residency										
Resident	693	580	83.7%	685	573	83.6%	783	645	82.4%	84.4%
Non-Res.	14	12	85.7%	21	13	61.9%	23	14	60.9%	73.8%
By High School Rank										
Top 10%	29	24	82.8%	43	36	83.7%	43	39	90.7%	89.4%
11%-25%	114	106	93.0%	104	93	89.4%	111	95	85.6%	89.9%
26%-50%	209	167	79.9%	208	177	85.1%	232	195	84.1%	85.0%
Bot 50%	213	180	84.5%	195	150	76.9%	237	184	77.6%	82.5%
By GPA in the First Fall Semester										
3.0 - 4.0	237	225	94.9%	233	223	95.7%	234	226	96.6%	95.6%
2.0 - 2.99	245	226	92.2%	225	207	92.0%	239	225	94.1%	92.2%
< 2.0	225	141	62.7%	248	156	62.9%	333	208	62.5%	63.4%
By SAT Groups										
1200+	36	28	77.8%	33	29	87.9%	35	29	82.9%	85.9%
800-1190	451	391	86.7%	468	392	83.8%	539	451	83.7%	86.9%
400-790	81	69	85.2%	58	50	86.2%	68	54	79.4%	83.6%

University Reporting & Research

Southeast

Persistence to the Second Semester by Cohort Status

	2003 Cohort			2004 Cohort			2005 Cohort			5-Yr Avg.
	began	ret'd	%	began	ret'd	%	began	ret'd	%	
Beginner	824	689	83.6%	815	667	81.8%	753	605	80.3%	82.7%
Transfer	347	281	81.0%	392	313	79.8%	398	333	83.7%	80.1%
Exclusions	0			0			0			
Overall	1,171	970	82.8%	1,207	980	81.2%	1,151	938	81.5%	82.0%

Full-Time Beginners Only (FTB)

	2003 Cohort			2004 Cohort			2005 Cohort			5-Yr Avg.
	began	ret'd	%	began	ret'd	%	began	ret'd	%	
FTB	676	584	86.4%	715	602	84.2%	665	542	81.5%	85.9%
FTB as % of Beginners	82.0%	84.8%		87.7%	90.3%		88.3%	89.6%		
FTB as % of Overall	57.7%	60.2%		59.2%	61.4%		57.8%	57.8%		
By Intended Degree										
Bachelor's	662	571	86.3%	697	587	84.2%	657	535	81.4%	85.8%
Other	14	13	92.9%	18	15	83.3%	**	**	87.5%	91.2%
By Ethnicity										
African Amer.	27	24	88.9%	16	11	68.8%	19	13	68.4%	75.3%
Hispanic	**	**	83.3%	12	9	75.0%	12	10	83.3%	82.1%
Other	643	555	86.3%	687	582	84.7%	634	519	81.9%	86.1%
Students By Age										
<20	598	521	87.1%	627	529	84.4%	597	489	81.9%	86.2%
20-21	30	27	90.0%	39	33	84.6%	34	26	76.5%	87.2%
22-24	16	12	75.0%	23	20	87.0%	12	9	75.0%	76.4%
25+	32	24	75.0%	26	20	76.9%	22	18	81.8%	82.2%
By Sex										
Male	276	242	87.7%	295	235	79.7%	256	198	77.3%	85.1%
Female	400	342	85.5%	420	367	87.4%	409	344	84.1%	86.4%
By Residency										
Resident	589	514	87.3%	636	540	84.9%	576	470	81.6%	86.5%
Non-Res.	87	70	80.5%	79	62	78.5%	89	72	80.9%	80.9%
By High School Rank										
Top 10%	29	26	89.7%	49	46	93.9%	37	36	97.3%	94.8%
11%-25%	129	122	94.6%	150	137	91.3%	93	81	87.1%	93.5%
26%-50%	229	195	85.2%	212	173	81.6%	178	143	80.3%	85.3%
Bot 50%	180	151	83.9%	198	155	78.3%	135	98	72.6%	80.5%
By GPA in the First Fall Semester										
3.0 - 4.0	244	229	93.9%	292	279	95.5%	230	220	95.7%	96.2%
2.0 - 2.99	248	227	91.5%	217	197	90.8%	213	196	92.0%	92.2%
< 2.0	184	128	69.6%	206	126	61.2%	222	126	56.8%	64.9%
By SAT Groups										
1200+	26	25	96.2%	17	13	76.5%	27	25	92.6%	92.0%
800-1190	408	360	88.2%	314	267	85.0%	423	356	84.2%	88.2%
400-790	54	46	85.2%	43	35	81.4%	65	47	72.3%	84.4%

University Reporting & Research