



ACADEMIC SENATE

BRING ON TOMORROW

Academic Senate, 10/25/24

Why?

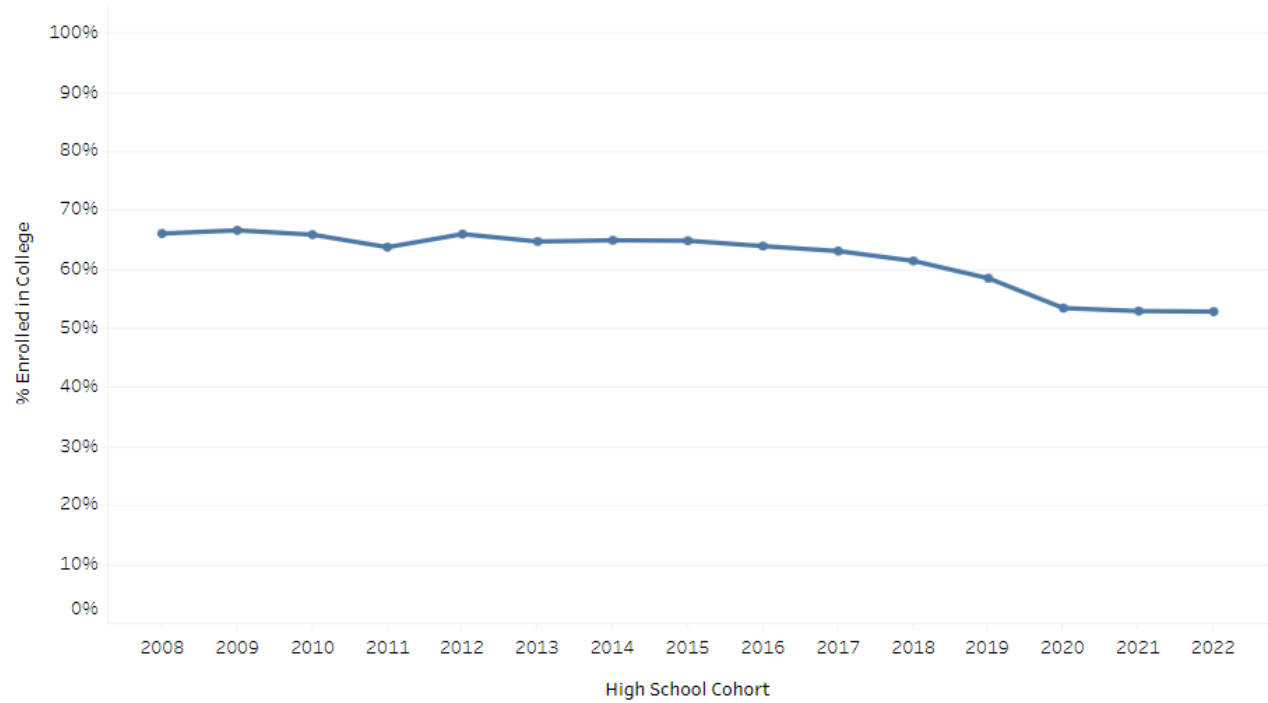


BRING ON TOMORROW

Statewide, the total number of high school graduates enrolling in college reduced from 66% to 52.8% (2008 to 2022), though it has levelled in the last three years.

<https://www.in.gov/che/college-readiness-reports/college-readiness-dashboard/>

High School Graduates Enrolling in College



	2008	2009	2010	2011	2012	2013	2014	2015	2016	2017	2018	2019	2020	2021	2022
% Enrolled in College	66.0%	66.5%	65.8%	63.7%	65.9%	64.6%	64.8%	64.8%	63.9%	63.0%	61.3%	58.4%	53.4%	52.9%	52.8%



BRING ON TOMORROW

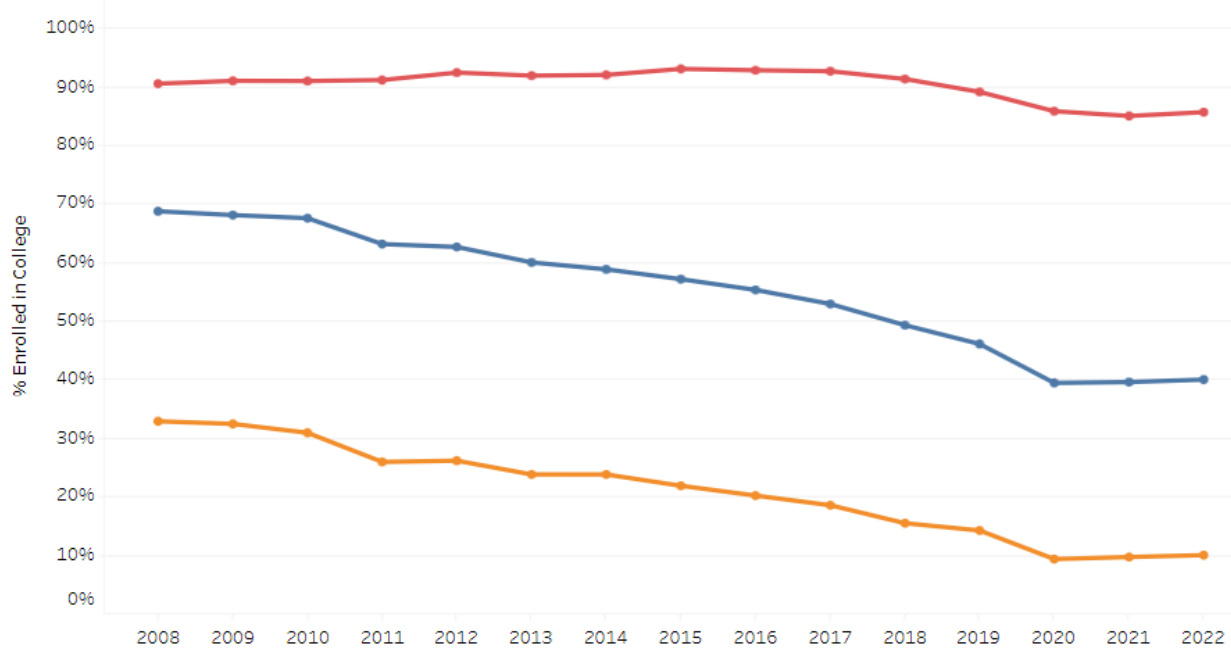
Statewide, the number of Indiana HS graduates enrolling in college reduced from 2008 to 2022:

- Core 40 diploma: 69% to 40%
- Honors diploma: 90% to 86%

Breakout



High School Graduates Enrolling in College





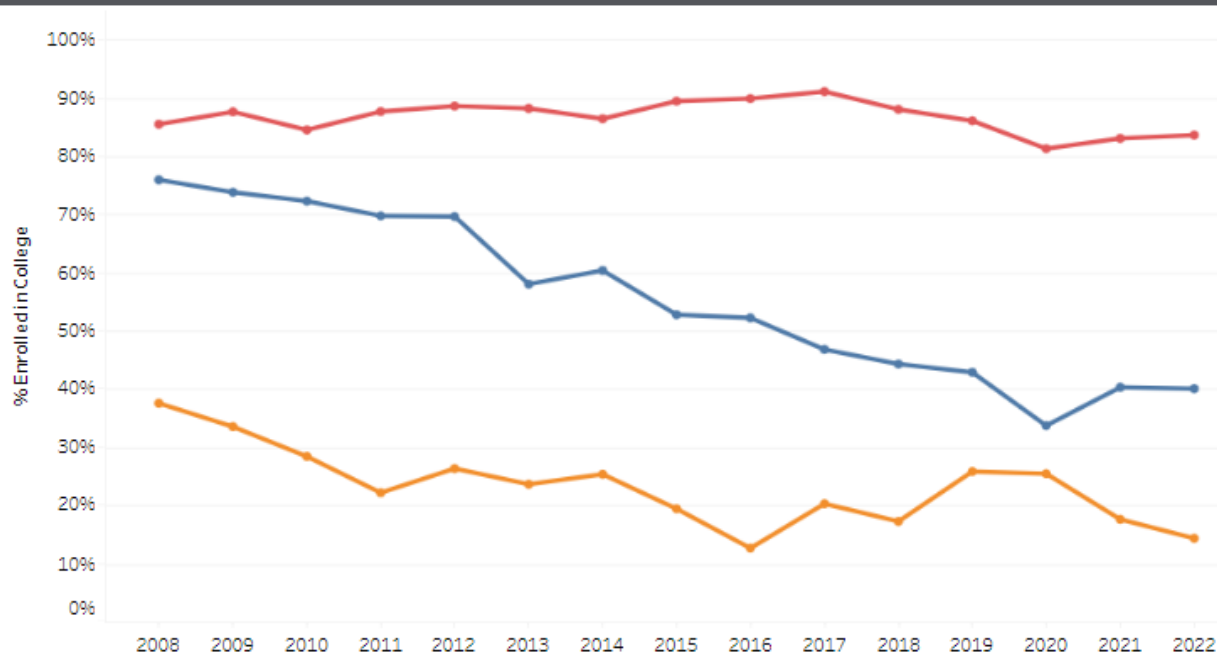
BRING ON TOMORROW

St. Joseph County: The number of HS graduates enrolling in college reduced from 2008 to 2022:

- Core 40 diploma: 75.9% to 40%
- Honors diploma: 85.5% to 83.6%

Breakout
■ Honors
■ Core 40
■ General

High School Graduates Enrolling in College





BRING ON TOMORROW

Elkhart County: The number of HS graduates enrolling in college reduced from 2008 to 2022:

- Core 40 diploma: 60.6% to 33.8%
- Honors diploma: 84.4% to 79.8%

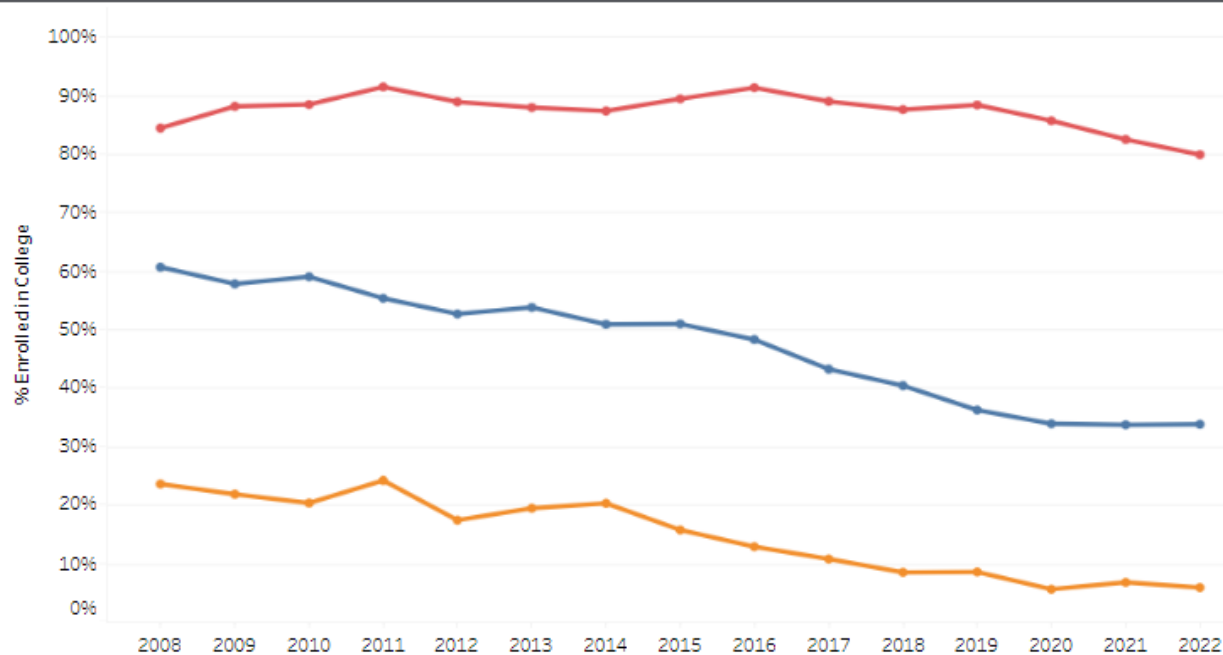
Breakout

Honors

General

Core 40

High School Graduates Enrolling in College

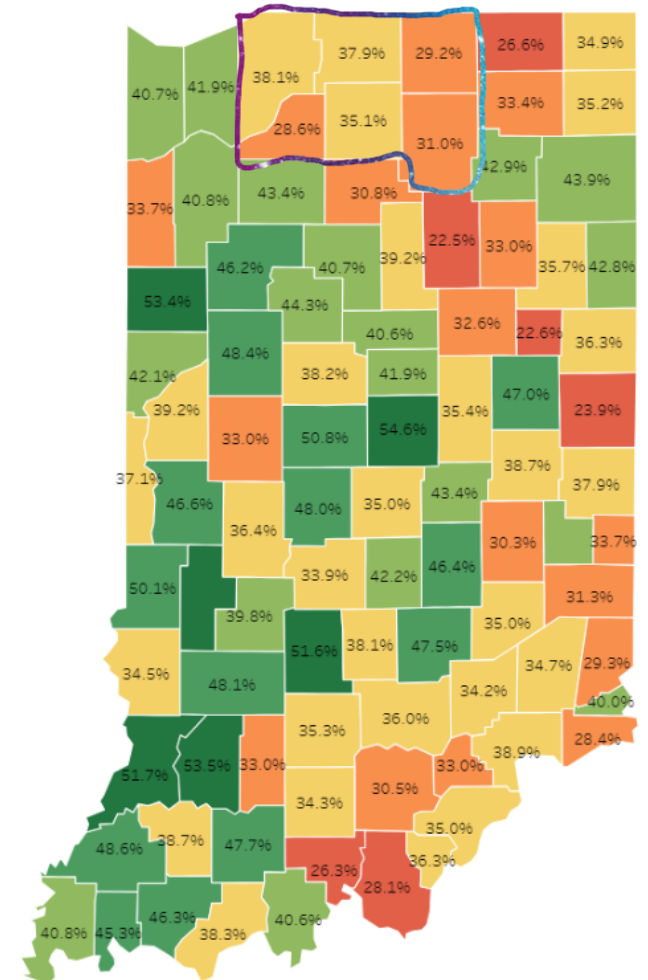




BRING ON TOMORROW

In 2022, for our primary service region, number of high school graduates attending *Indiana Public Colleges* is $\leq 38.1\%$ with Elkhart at 29.2%.

% Enrolled in IN Public College by County





BRING ON TOMORROW

Future High School Graduates from IUSB's Primary Service Region Feeder Schools

- The projected number of high school graduates from our feeder schools in upcoming years
- Primary Service Region: St. Joseph, Elkhart, Kosciusko, La Porte, Marshall and Starke



BRING ON TOMORROW

Notes about data

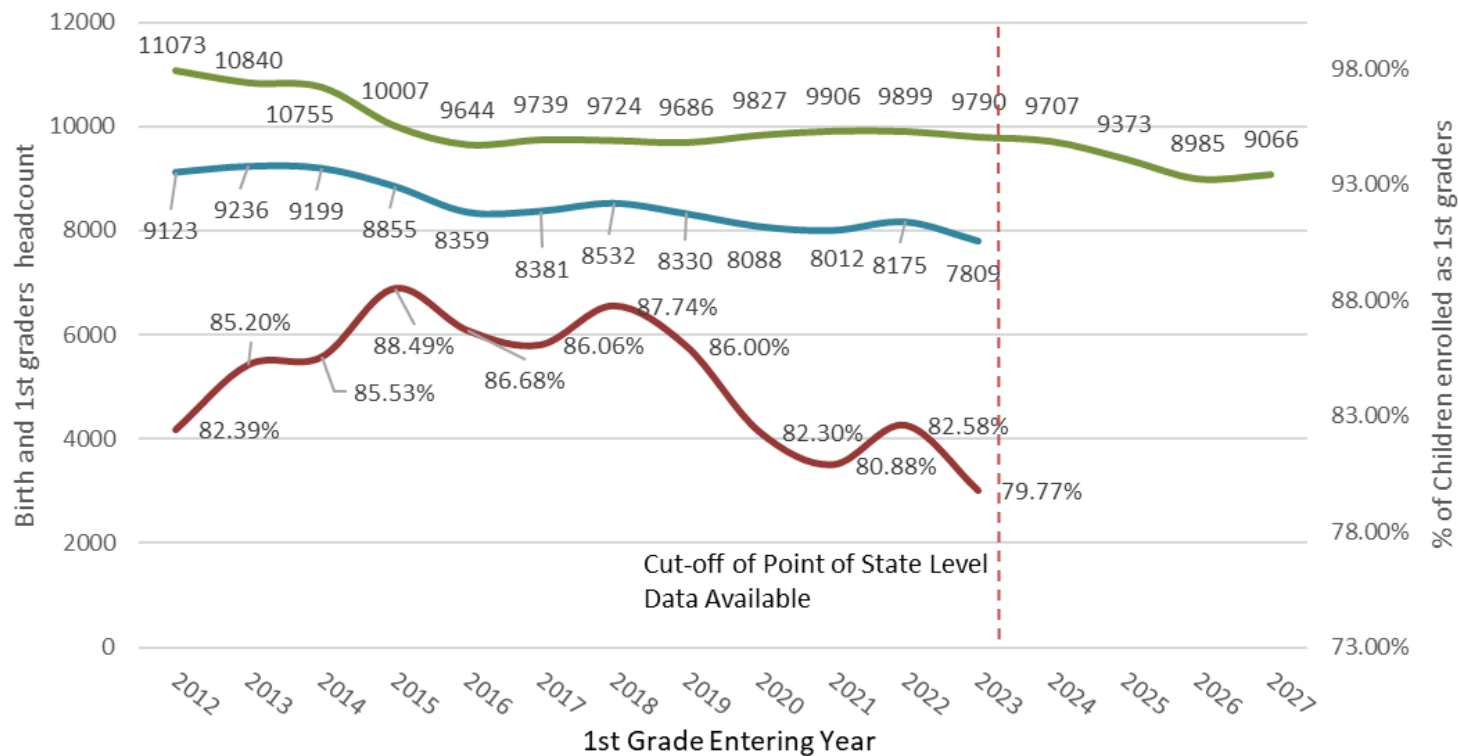
Projection: The retention variation between grade transitions in all grades except 11th to 12th grade was minimal. 11th to 12th grade had the greatest amount of variation post COVID-19 (e.g., students who started 11th grade in Fall 2020 and were supposed to start 12th grade in Fall 2021). Thus, we split the data into three time periods for the 11th to 12th grade retention calculation as shown below. All calculations of projecting high school graduates and enrolling in IUSB are based on these three categories.

- Pre COVID-19: Students starting 12th grade in Fall 2016-20
- Post COVID-19: Students starting 12th grade in Fall 2021-23
- All: Students starting 12th grade in Fall 2017-23 (Fall 2020 + 3 years before and after)

Actual vs. Projected

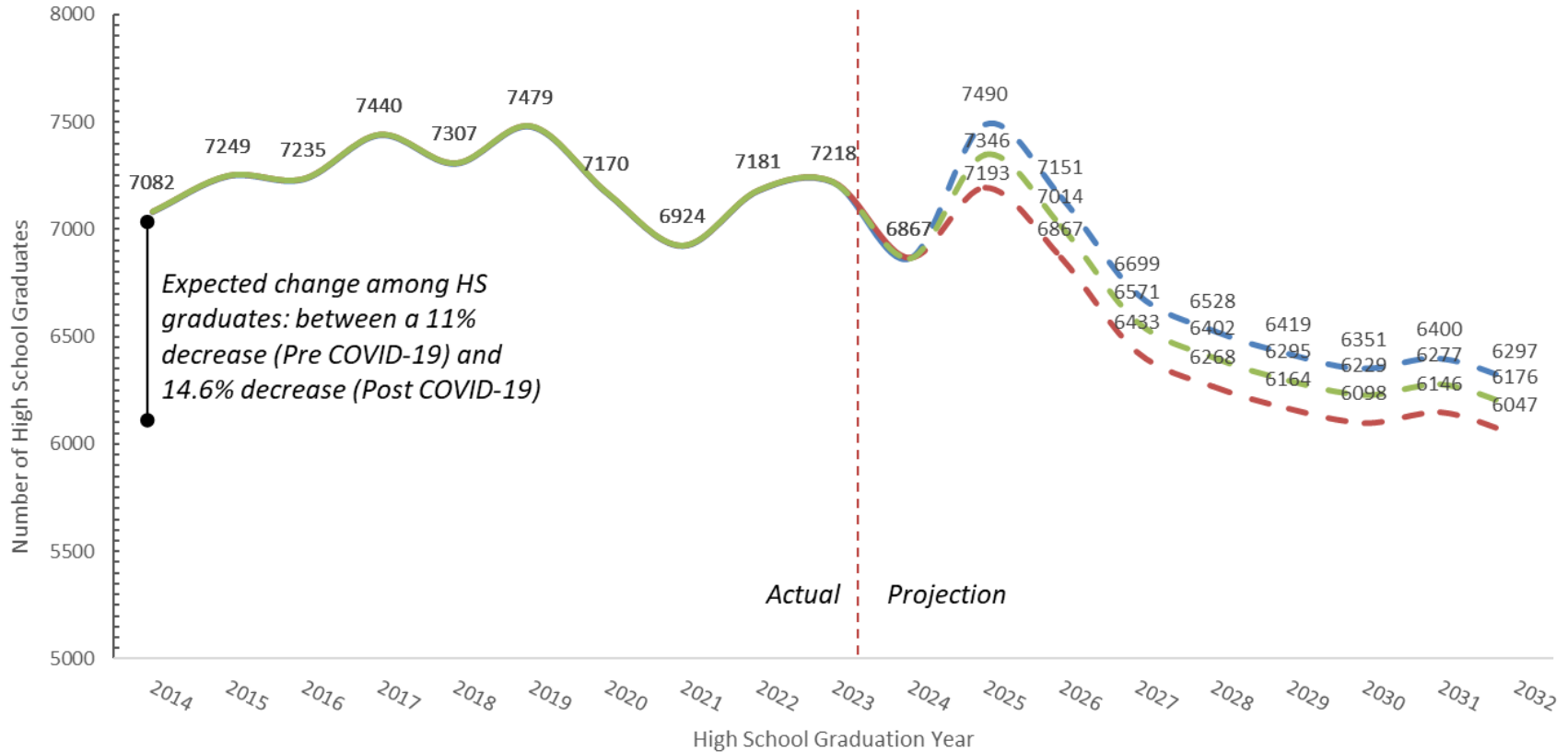
Data Category & Source	Actual	Projected
Indiana Counties Birth	Until 2021	None
K-12 Enrollment Data. Public Feeder HS Corps.	Until Entering Fall 2023	12 th grade enrollment starting Fall 2024
12th Graduation Data. Public Feeder HS Corps.	Until Entering Fall 2022 (graduate d in 2023)	12 th grade graduation data starting Spring/Summer 2024 graduates
IUSB Applications, Admissions, and Enrollment	Until Fall 2024	Starting Fall 2025

Birth and 1st Grade Student Population Trends in our Primary Service Region



- Children born in our Primary Service Region who will be 6 years old
- Primary Service Region 1st Grader Population
- % of Children Born in our Primary Service Area and Enrolled as 1st Graders in our HS Feeder Corps.

Actual & Projected Number of Students Graduating from High School in our Primary Service Region



— Model 1: Pre COVID-19 Trend — Model 2: Post COVID-19 Trend
— Model 3: Full Period Trend

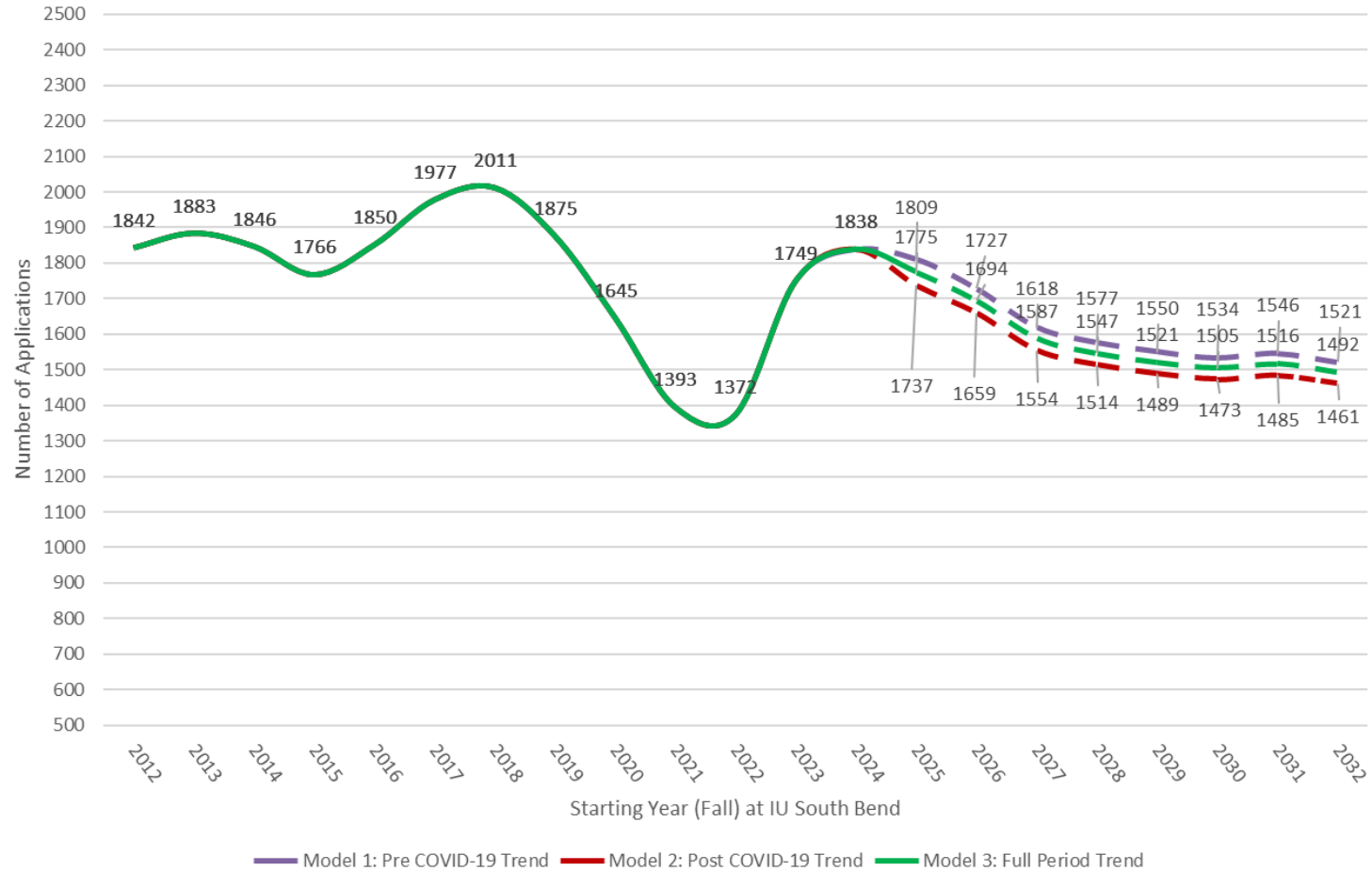


BRING ON TOMORROW

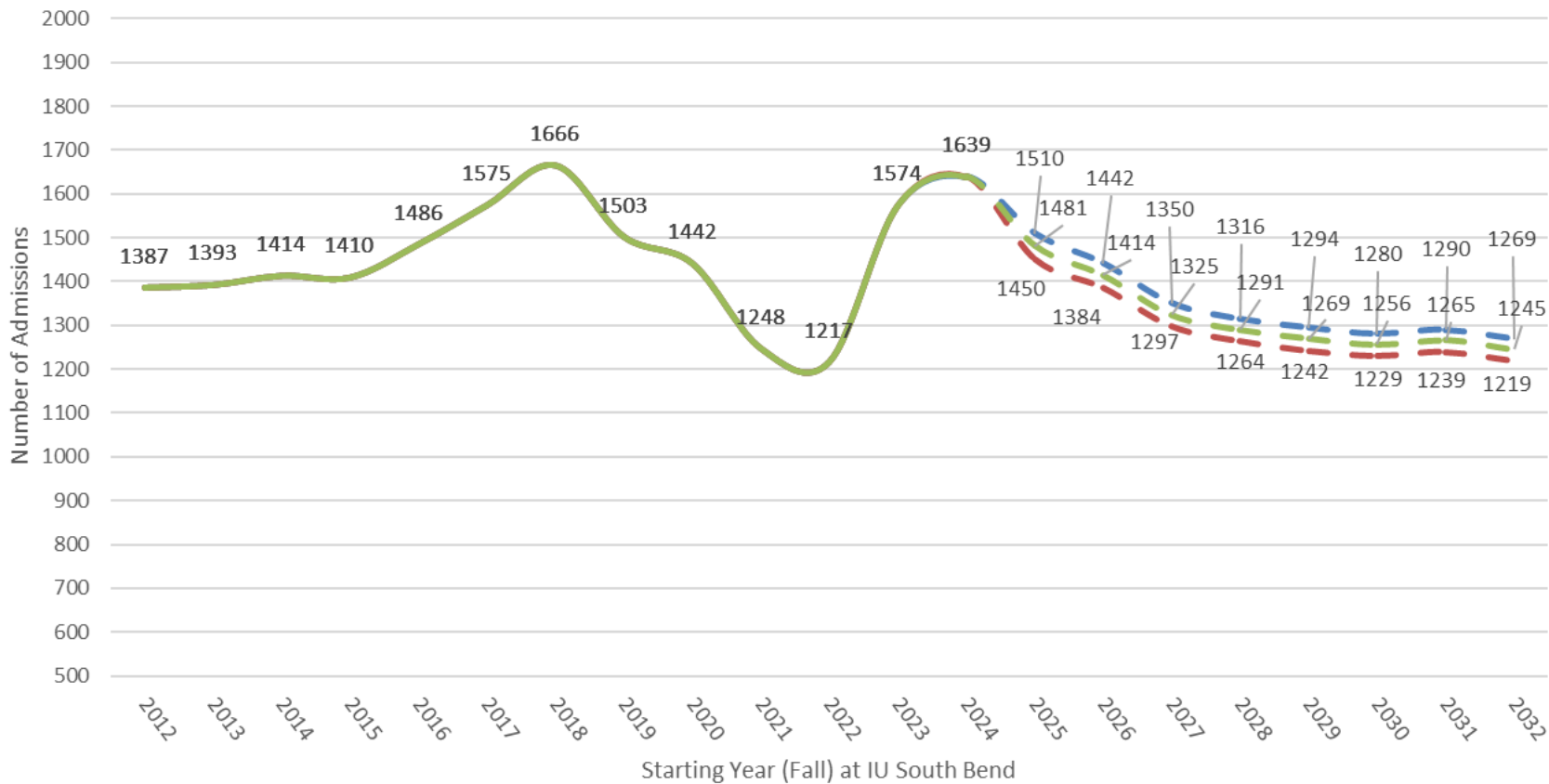
IUSB's Market Share

- What portion of high school graduates from our primary service region have been enrolling at IUSB, how that has been changing, and projections based on that data

Actual & Projected Number High School Graduates from our Primary Service Region Applying to IU South Bend

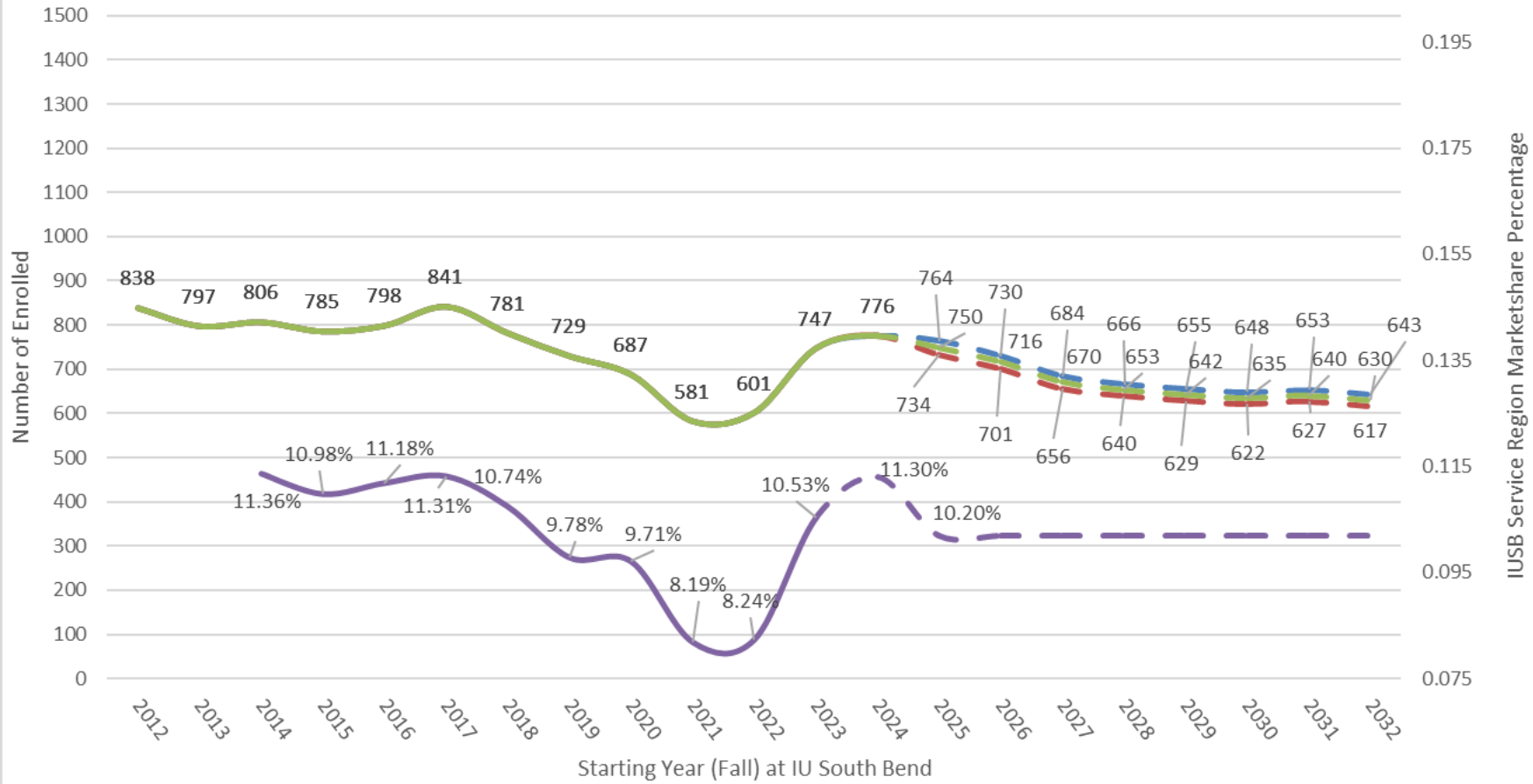


Actual & Projected Number of High School Graduates from our Primary Service Region Admitted to IU South Bend



Model 1: Pre COVID-19 Trend Model 2: Post COVID-19 Trend Model 3: Full Period Trend

Actual & Projected Number of High School Graduates from our Primary Service Region Enrolled at IU South Bend



— Model 1: Pre COVID-19 Trend
 — Model 2: Post COVID-19 Trend
 — Model 3: Full Period Trend
 — % of Marketshare



BRING ON TOMORROW

New proposed Indiana HS Diploma may NOT make it easier – students who typically go to regional campuses could be severely affected without proper course planning during middle and high schools.

in.gov/doe/diplomas

<https://form.jotform.com/241416447370959>

Second public comment period – Nov 8th

CURRENT INDIANA CORE40

FUTURE INDIANA DIPLOMA

	CURRENT INDIANA CORE40	FUTURE INDIANA DIPLOMA
ENGLISH	8 CREDITS	8 CREDITS <ul style="list-style-type: none"> 2 credits: English 9 1 credit: Communications-focused course 5 additional English credits
MATH	6 CREDITS <ul style="list-style-type: none"> 2 credits: Algebra I 2 credits: Geometry 2 credits: Algebra II 	7 CREDITS <ul style="list-style-type: none"> 2 credits: Algebra I 1 credit: Personal Finance 4 additional math credits
SCIENCE, TECHNOLOGY, AND ENGINEERING	6 CREDITS <ul style="list-style-type: none"> 2 credits: Biology I 2 credits: Chemistry 1, Physics I, or Integrated Physics 2 credits: Any Core 40 science course 	7 CREDITS <ul style="list-style-type: none"> 2 credits: Biology I 1 credit: Computer Science 2 additional science credits 2 STEM-focused credits
SOCIAL STUDIES	6 CREDITS <ul style="list-style-type: none"> 2 credits: U.S. History 1 credit: U.S. Government 1 credit: Economics 2 credits: World History/Civilization or Geography/History of the World 	5 CREDITS <ul style="list-style-type: none"> 2 credits: U.S. History 1 credit: U.S. Government 2 credits: World Perspectives (Flexible options, including advanced world language or world-focused social studies courses)
PE/HEALTH	3 CREDITS <ul style="list-style-type: none"> 2 credits: Physical Education 1 credit: Health & Wellness 	2 CREDITS <ul style="list-style-type: none"> 1 credit: Physical Education 1 credit: Health & Wellness
DIRECTED ELECTIVES	5 CREDITS <ul style="list-style-type: none"> Any combination of World Languages, Fine Arts, and/or Career & Technical Education 	N/A
PERSONALIZED ELECTIVES	6 CREDITS	12 CREDITS <p>Students are encouraged to utilize the new readiness-seals to align these personalized electives with their unique goals. Personalized electives can include a variety of courses, such as CTE, Performing or Fine Arts, and World Languages.</p>
COLLEGE & CAREERS	N/A	1 CREDIT
TOTAL	40 CREDITS	42 CREDITS



BRING ON TOMORROW

SUMMARY



01

K-12 Pipeline

The number of births, along with the number of students graduating from high schools and attending college/regional campuses, present challenges to our enrollment.

HS Diploma Changes

The enrollment of Core 40 diploma students in Indiana public colleges has dropped from around 70% to 40%. Changes in high school diplomas could worsen this decline.



03

Market Share

While market share in primary service region has returned to 2018 levels, external competition and student choice present considerable challenges in maintaining or increasing this share.



02

