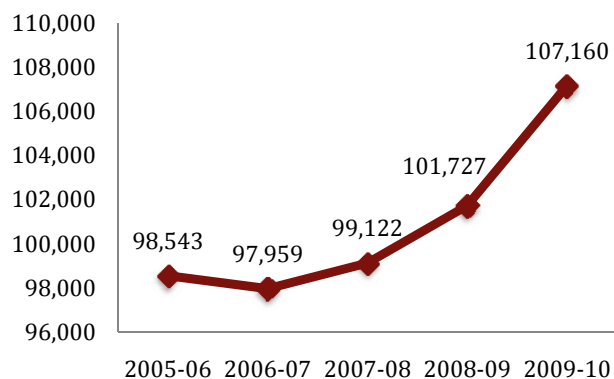
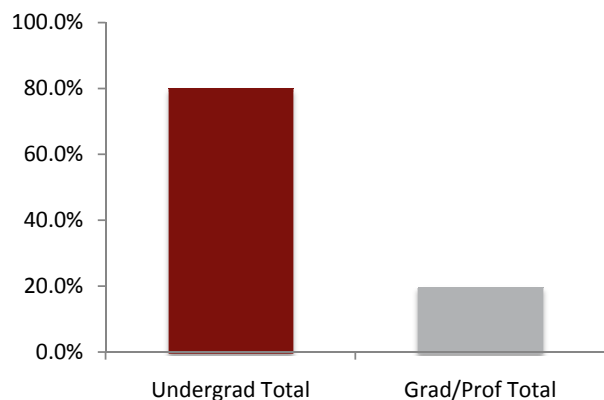
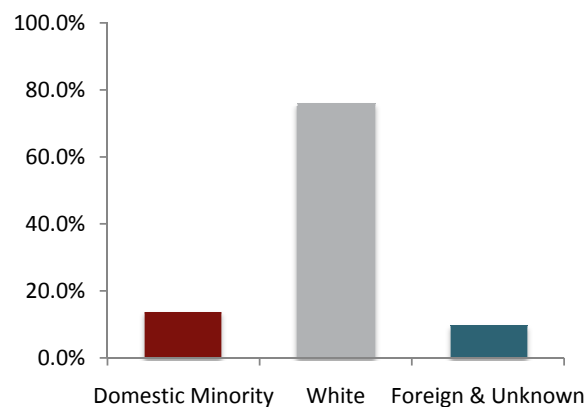


**IU Historical Enrollment  
First Semester**

**IU Enrollment By Level**

**IU Enrollment By Ethnicity**

**University Enrollment Summary**

	Count	% of total	% change <sup>1</sup>
Headcount	107,160		5.3%
Credit Hours	1,250,480.5		5.7%
FTE	85,574.6		5.6%

**Students By Level and Class**

Undergrad Total	85,797	80.1%	6.1%
Degree-seeking	80,541	75.2%	4.9%
Non-Degree	5,256	4.9%	27.7%
Grad/Prof Total	21,363	19.9%	2.4%
Grad Degree-seeking	15,905	14.8%	3.4%
Prof Degree-seeking	3,633	3.4%	2.3%
Non-Degree	1,825	1.7%	-4.8%

Freshman	23,334	29.0%	3.8%
Sophomore	19,269	23.9%	3.6%
Junior	16,149	20.1%	5.1%
Senior	21,789	27.1%	7.2%

**Undergraduates By Courseload<sup>2</sup>**

FT-UG	65,301	81.1%	6.3%
PT-UG	15,240	18.9%	-0.7%

**Sex**

Male	47,137	44.0%	6.5%
Female	60,023	56.0%	4.4%

**Ethnicity**

African American	7,693	7.2%	10.8%
American Indian	332	0.3%	-1.8%
Asian American	3,448	3.2%	9.4%
Hispanic	3,412	3.2%	10.9%
White	81,647	76.2%	3.6%
Foreign	6,101	5.7%	6.1%
Unknown	4,527	4.2%	25.0%

**Residency**

Resident	82,230	76.7%	5.7%
Non-Resident	24,930	23.3%	4.1%
Reciprocity <sup>3</sup>	2,387	9.6%	16.5%

<sup>1</sup> Compared with First Semester, 2008-09

<sup>2</sup> Degree-seeking only

<sup>3</sup> Portion of non-resident enrollments that are reciprocity

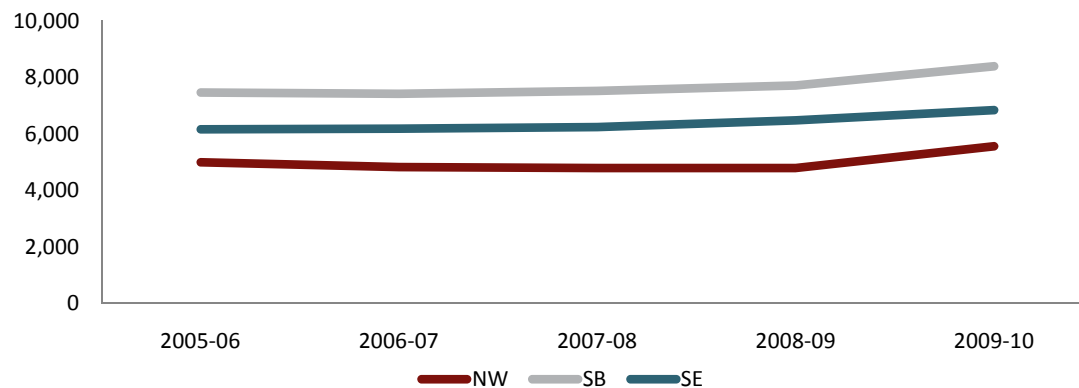
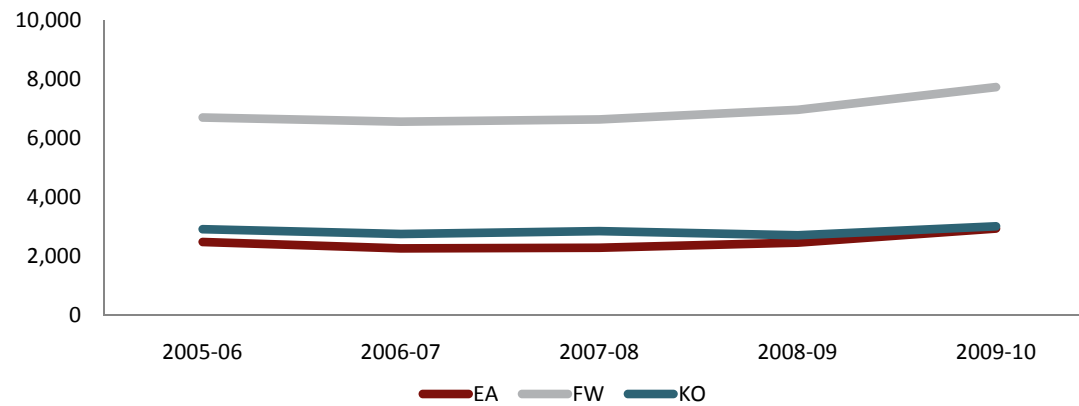
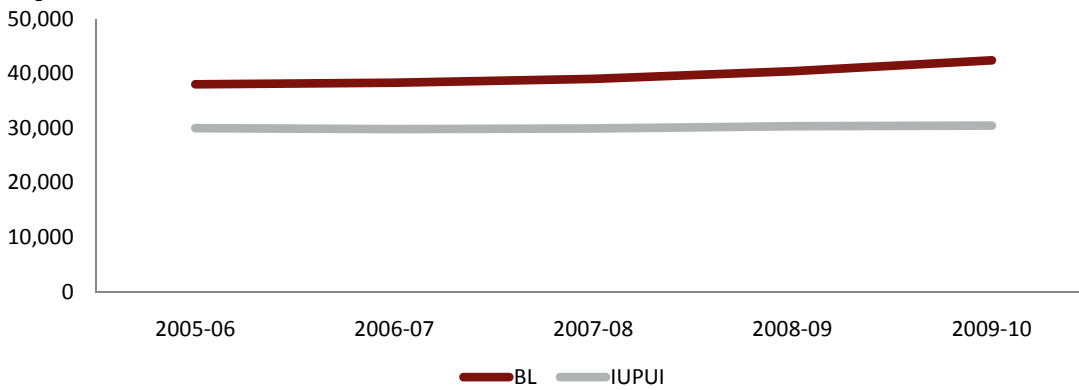
### Campus Enrollment Summary

	Headcount			Credit Hours			FTE		
	Count	%	%	Count	%	%	Count	%	%
		of total	change <sup>1</sup>		of total	change <sup>1</sup>		of total	change <sup>1</sup>
Bloomington	42,347	39.5%	4.9%	566,783.0	45.3%	4.1%	39,057.6	45.6%	4.3%
Indianapolis	30,383	28.4%	0.3%	340,153.5	27.2%	2.7%	23,310.7	27.2%	2.4%
East	2,924	2.7%	19.5%	28,926.0	2.3%	18.3%	1,937.4	2.3%	18.4%
Fort Wayne*	7,720	7.2%	11.1%	78,445.0	6.3%	10.5%	5,281.3	6.2%	10.5%
Kokomo	2,992	2.8%	11.2%	29,368.0	2.3%	13.9%	1,974.1	2.3%	13.8%
Northwest	5,560	5.2%	16.0%	56,949.5	4.6%	16.9%	3,867.9	4.5%	16.7%
South Bend	8,394	7.8%	8.8%	80,532.0	6.4%	9.4%	5,457.1	6.4%	9.2%
Southeast	6,840	6.4%	5.5%	69,323.5	5.5%	8.2%	4,688.5	5.5%	8.1%

<sup>1</sup> Compared with First Semester, 2008-09

\* IU students only

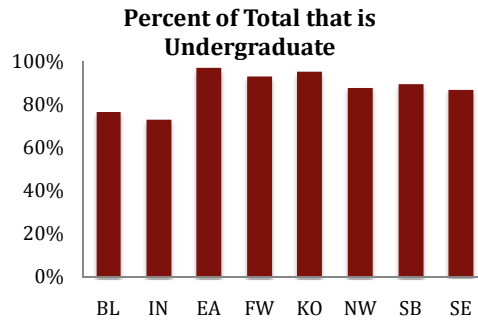
### Campus Historical First Semester Enrollment



**Campus Enrollment Summary**

**Level of Enrollment (including non-degree)**

	Undergraduate			Graduate/Professional		
	Count	% of campus		Count	% of campus	
		total	% change <sup>1</sup>		total	% change <sup>1</sup>
Bloomington	32,490	76.7%	2.7%	9,857	23.3%	12.9%
Indianapolis	22,119	72.8%	3.2%	8,264	27.2%	-6.9%
East	2,827	96.7%	18.4%	97	3.3%	64.4%
Fort Wayne*	7,195	93.2%	12.6%	525	6.8%	-6.3%
Kokomo	2,848	95.2%	12.1%	144	4.8%	-4.0%
Northwest	4,879	87.8%	17.1%	681	12.2%	8.8%
South Bend	7,496	89.3%	11.0%	898	10.7%	-6.1%
Southeast	5,943	86.9%	6.4%	897	13.1%	0.0%



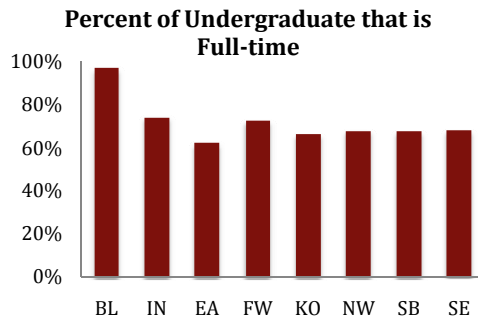
**Undergraduates by Class<sup>†</sup>**

	Freshman			Sophomore			Junior			Senior		
	Count	% of campus		Count	% of campus		Count	% of campus		Count	% of campus	
		total	% change <sup>1</sup>		total	% change <sup>1</sup>		total	% change <sup>1</sup>		total	% change <sup>1</sup>
Bloomington	7,917	24.7%	-2.6%	8,134	25.4%	1.4%	7,353	23.0%	2.6%	8,596	26.9%	10.7%
Indianapolis	5,056	24.2%	-1.7%	4,870	23.3%	3.1%	4,217	20.2%	4.4%	6,783	32.4%	4.6%
East	779	31.9%	4.4%	555	22.7%	10.8%	504	20.6%	55.6%	606	24.8%	18.8%
Fort Wayne*	2,515	32.6%	15.8%	1,305	16.9%	0.8%	863	11.2%	-6.6%	1,531	19.8%	9.0%
Kokomo	813	27.2%	12.1%	536	17.9%	12.6%	406	13.6%	1.5%	595	19.9%	-1.3%
Northwest	1,896	34.1%	26.3%	1,095	19.7%	7.8%	646	11.6%	10.8%	894	16.1%	2.3%
South Bend	2,420	28.8%	9.2%	1,460	17.4%	5.7%	1,059	12.6%	18.5%	1,421	16.9%	2.7%
Southeast	1,938	28.3%	5.2%	1,314	19.2%	10.9%	1,101	16.1%	7.1%	1,363	19.9%	5.1%

<sup>†</sup> Degree-seeking only

**Undergraduate Enrollment Status<sup>†</sup>**

	Full-time Undergrad			Part-time Undergrad		
	Count	% of campus		Count	% of campus	
		total	% change <sup>1</sup>		total	% change <sup>1</sup>
Bloomington	30,983	96.8%	3.3%	1,017	3.2%	-5.9%
Indianapolis	15,499	74.1%	5.5%	5,427	25.9%	-4.7%
East	1,511	61.8%	11.5%	933	38.2%	28.5%
Fort Wayne*	4,511	72.6%	10.0%	1,703	27.4%	0.6%
Kokomo	1,548	65.9%	18.6%	802	34.1%	-10.8%
Northwest	3,067	67.7%	19.9%	1,464	32.3%	3.5%
South Bend	4,297	67.6%	10.9%	2,063	32.4%	3.2%
Southeast	3,885	68.0%	10.7%	1,831	32.0%	-0.5%



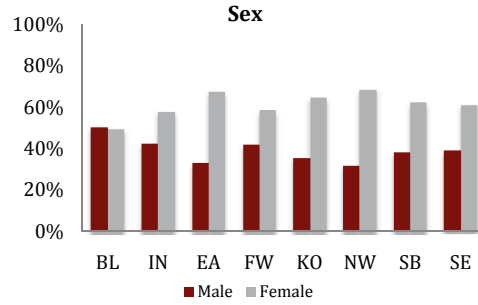
<sup>1</sup> Compared with First Semester, 2008-09

\* IU students only

**Campus Enrollment Summary**

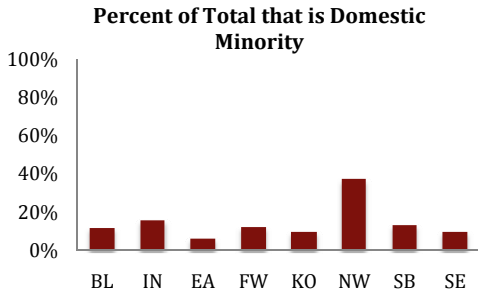
**Sex**

	Male			Female		
	Count	% of campus		Count	% of campus	
		total	change <sup>1</sup>		total	change <sup>1</sup>
Bloomington	21,380	50.5%	7.4%	20,967	49.5%	2.5%
Indianapolis	12,898	42.5%	-1.2%	17,485	57.5%	1.4%
East	962	32.9%	24.9%	1,962	67.1%	17.0%
Fort Wayne*	3,213	41.6%	11.9%	4,507	58.4%	10.6%
Kokomo	1,062	35.5%	18.8%	1,930	64.5%	7.5%
Northwest	1,761	31.7%	20.6%	3,799	68.3%	13.9%
South Bend	3,183	37.9%	12.7%	5,211	62.1%	6.6%
Southeast	2,678	39.2%	8.3%	4,162	60.8%	3.8%



**Ethnicity**

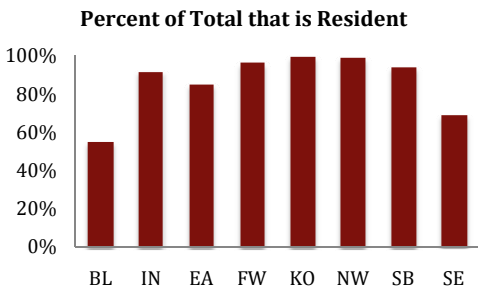
	Domestic Minority			Other		
	Count	% of campus		Count	% of campus	
		total	change <sup>1</sup>		total	change <sup>1</sup>
Bloomington	4,906	11.6%	9.4%	37,441	88.4%	4.4%
Indianapolis	4,748	15.6%	3.2%	25,635	84.4%	-0.3%
East	177	6.1%	12.7%	2,747	93.9%	20.0%
Fort Wayne*	932	12.1%	29.8%	6,788	87.9%	9.0%
Kokomo	283	9.5%	24.1%	2,709	90.5%	10.0%
Northwest	2,056	37.0%	16.2%	3,504	63.0%	15.8%
South Bend	1,110	13.2%	15.5%	7,284	86.8%	7.9%
Southeast	673	9.8%	13.1%	6,167	90.2%	4.8%



	American Indian			Asian American			African American			Hispanic		
	Count	% of campus		Count	% of campus		Count	% of campus		Count	% of campus	
		total	change <sup>1</sup>		total	change <sup>1</sup>		total	change <sup>1</sup>		total	change <sup>1</sup>
Bloomington	121	0.3%	4.3%	1,803	4.3%	14.7%	1,883	4.4%	7.7%	1,099	2.6%	5.0%
Indianapolis	78	0.3%	-6.0%	1,132	3.7%	-2.0%	2,743	9.0%	4.3%	795	2.6%	8.8%
East	10	0.3%	150.0%	19	0.6%	26.7%	115	3.9%	16.2%	33	1.1%	-15.4%
Fort Wayne*	28	0.4%	7.7%	131	1.7%	29.7%	522	6.8%	33.8%	251	3.3%	24.9%
Kokomo	12	0.4%	-29.4%	44	1.5%	41.9%	157	5.2%	21.7%	70	2.3%	37.3%
Northwest	22	0.4%	-21.4%	116	2.1%	31.8%	1,262	22.7%	20.1%	656	11.8%	9.0%
South Bend	31	0.4%	-13.9%	95	1.1%	-8.7%	595	7.1%	18.1%	389	4.6%	22.7%
Southeast	30	0.4%	7.1%	108	1.6%	27.1%	416	6.1%	5.6%	119	1.7%	35.2%

**Residency**

	Resident			Non-resident		
	Count	% of campus		Count	% of campus	
		total	change <sup>1</sup>		total	change <sup>1</sup>
Bloomington	23,320	55.1%	3.6%	19,027	44.9%	6.6%
Indianapolis	27,921	91.9%	2.8%	2,462	8.1%	-21.8%
East	2,484	85.0%	16.8%	440	15.0%	37.5%
Fort Wayne*	7,445	96.4%	11.1%	275	3.6%	12.7%
Kokomo	2,972	99.3%	11.1%	20	0.7%	42.9%
Northwest	5,492	98.8%	16.2%	68	1.2%	3.0%
South Bend	7,894	94.0%	8.7%	500	6.0%	10.6%
Southeast	4,702	68.7%	1.9%	2,138	31.3%	14.5%



<sup>1</sup> Compared with First Semester, 2008-09

\* IU students only