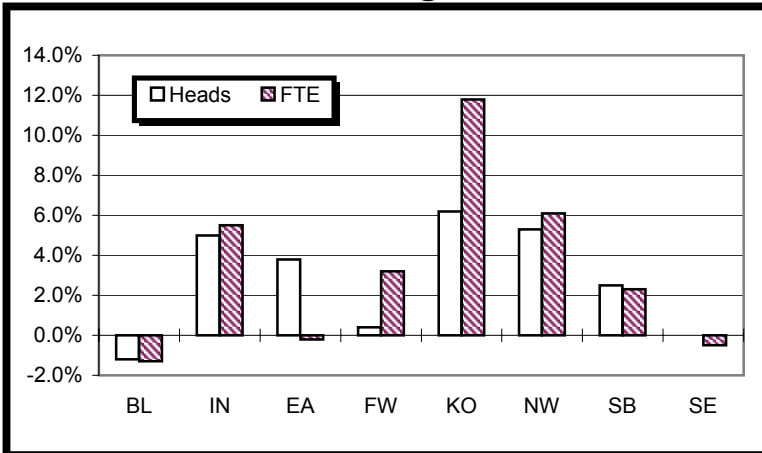




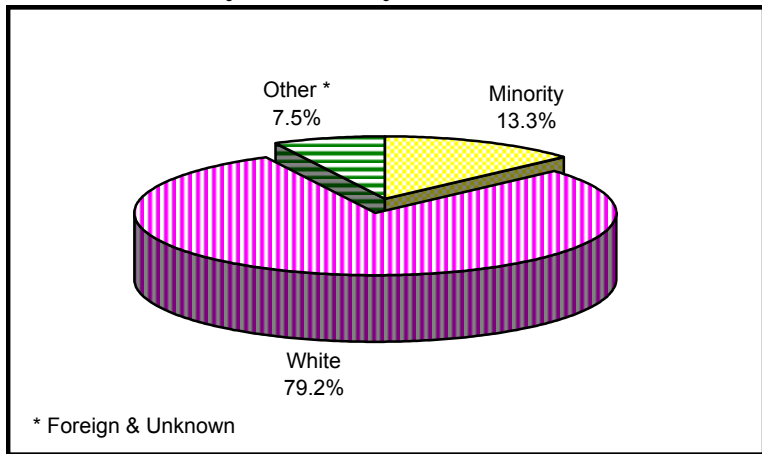
Enrollment Percent Change



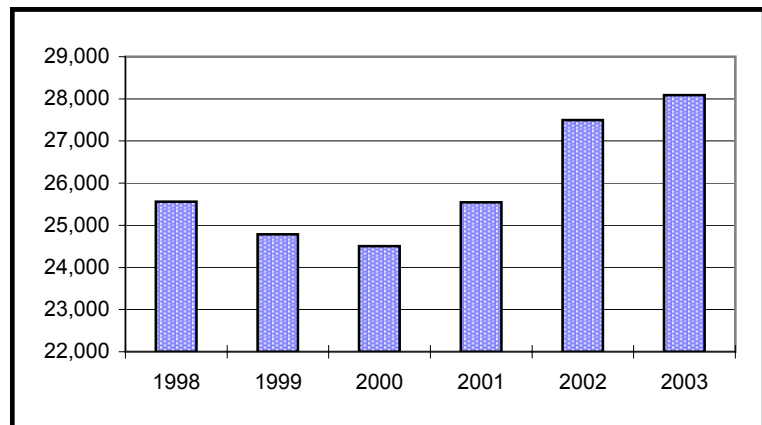
University Enrollment Summary

	#	% Change(a)
Headcount	28,091	2.2%
Credit Hours	115,005.0	2.3%
FTE	8,151.2	2.3%
Students By Class (b)		
Freshman	2,599	-2.4%
Sophomore	3,680	0.8%
Junior	3,658	1.4%
Senior	7,274	7.6%
Students By Level		
Undergraduate	17,211	3.2%
Graduate	5,343	5.3%
Professional	1,134	12.6%
Sp. Undergrad	1,940	-8.8%
Sp. Graduate	2,463	-5.4%
Sex		
Male	11,157	3.5%
Female	16,934	1.3%
Ethnicity		
Amer. Indian	86	34.4%
Asian	755	0.9%
Black	2,301	0.7%
Hispanic	595	-5.0%
White	22,255	1.2%
Foreign	1,722	21.1%
Unknown	377	2.2%
Undergraduates By FT/PT (b)		
FT-UG	5,718	4.1%
PT-UG	11,493	2.7%
Residency		
Resident	23,050	1.6%
Non-Resident	5,041	4.8%

Enrollment By Ethnicity



Historical Summer II Enrollment



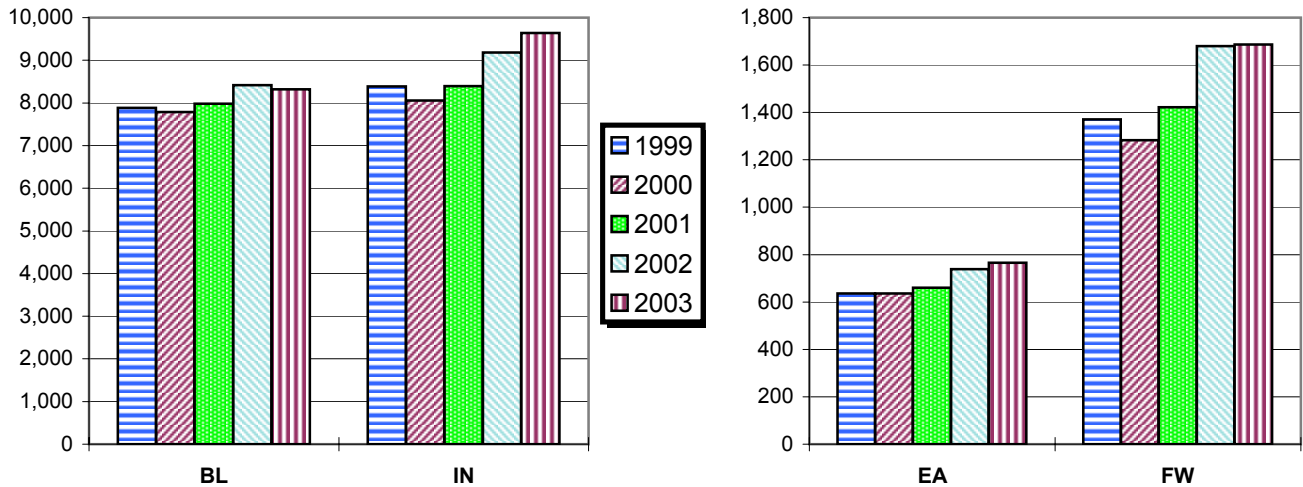
(a) Compared with Summer II, 2002
(b) Degree-seeking only

Campus Enrollment Summary

By Headcount, Credit Hours, and FTE

	Headcount		Credit Hours		FTE	
	#	% Change	#	% Change	#	% Change
BL	8,317	-1.2%	37,564.0	-1.5%	2,677.1	-1.3%
IN	9,638	5.0%	37,615.0	5.4%	2,672.8	5.5%
EA	766	3.8%	3,163.0	-0.3%	212.4	-0.2%
FW	1,687	0.4%	6,517.0	3.6%	459.6	3.2%
KO	770	6.2%	3,062.0	12.0%	209.9	11.8%
NW	1,935	5.3%	7,732.0	6.3%	543.6	6.1%
SB	2,630	2.5%	10,085.0	3.1%	721.2	2.3%
SE	2,348	0.0%	9,267.0	-0.6%	654.5	-0.5%

Historical Second Summer Session Enrollment



By Undergraduate Enrollment Status

	Full-Time UG		Part-Time UG	
	#	% Change	#	% Change
BL	2,448	-2.7%	2,477	0.9%
IN	1,422	11.2%	3,814	1.6%
EA	218	-3.1%	460	6.2%
FW	302	25.8%	936	-2.6%
KO	153	33.0%	470	5.1%
NW	400	17.0%	856	3.9%
SB	383	4.1%	1,264	10.3%
SE	392	-3.4%	1,216	3.8%

By Residency

	Resident		Non-Resident	
	#	% Change	#	% Change
BL	5,071	-3.4%	3,246	2.5%
IN	8,778	4.9%	860	5.9%
EA	704	3.5%	62	6.9%
FW	1,611	0.8%	76	-7.3%
KO	768	6.7%	2	-60.0%
NW	1,904	4.6%	31	82.4%
SB	2,483	2.0%	147	11.4%
SE	1,731	-4.4%	617	14.7%

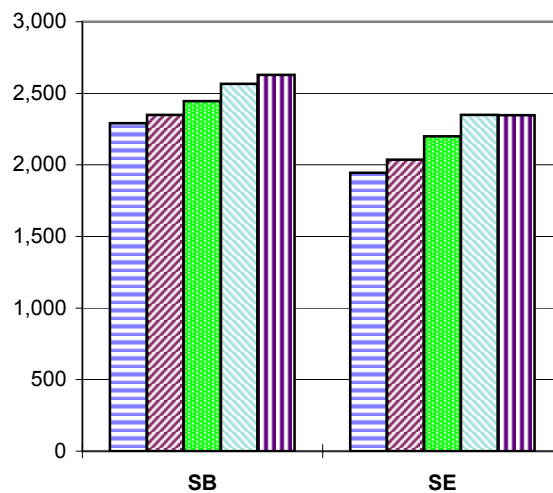
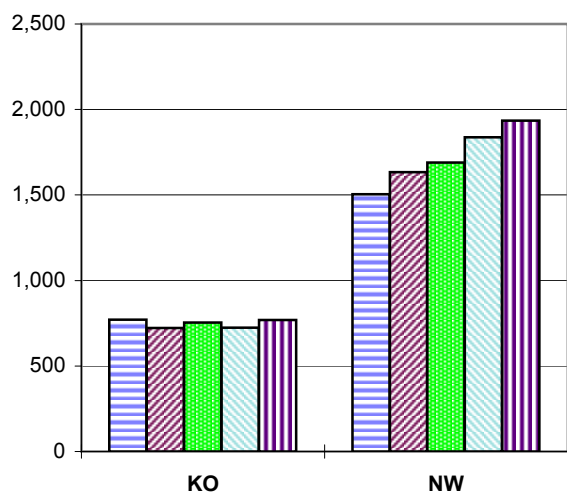
FW - IU Students Only

Campus Enrollment Summary

By Undergraduate Class Standing

	Freshman		Sophomore		Junior		Senior	
	#	% Change	#	% Change	#	% Change	#	% Change
BL	705	-11.8%	489	-4.9%	1,189	-3.7%	2,542	4.9%
IN	601	-2.6%	1,296	-2.6%	1,069	2.5%	2,270	11.1%
EA	220	2.8%	172	-3.4%	116	17.2%	170	1.8%
FW	196	1.6%	310	-2.8%	254	-1.6%	478	10.9%
KO	129	19.4%	217	13.0%	104	1.0%	173	8.8%
NW	267	8.5%	365	5.5%	214	22.3%	410	2.8%
SB	291	5.1%	445	4.7%	349	19.5%	562	8.1%
SE	190	-9.5%	386	10.9%	363	-9.9%	669	8.4%

Historical Second Summer Session Enrollment



Graduate and Professional Enrollment

	Graduate		Professional	
	#	% Change	#	% Change
BL	1,935	4.5%	297	-15.9%
IN	1,783	11.0%	837	28.0%
EA	0	-100.0%		
FW	265	-11.1%		
KO	45	9.8%		
NW	268	19.6%		
SB	576	-6.3%		
SE	471	8.0%		

FW - IU Students Only

By Sex

	Male		Female	
	#	% Change	#	% Change
BL	3,974	-1.9%	4,343	-0.5%
IN	3,991	8.9%	5,647	2.4%
EA	192	6.7%	574	2.9%
FW	602	8.5%	1,085	-3.6%
KO	199	3.1%	571	7.3%
NW	554	3.6%	1,381	6.1%
SB	871	5.6%	1,759	1.0%
SE	774	0.4%	1,574	-0.3%

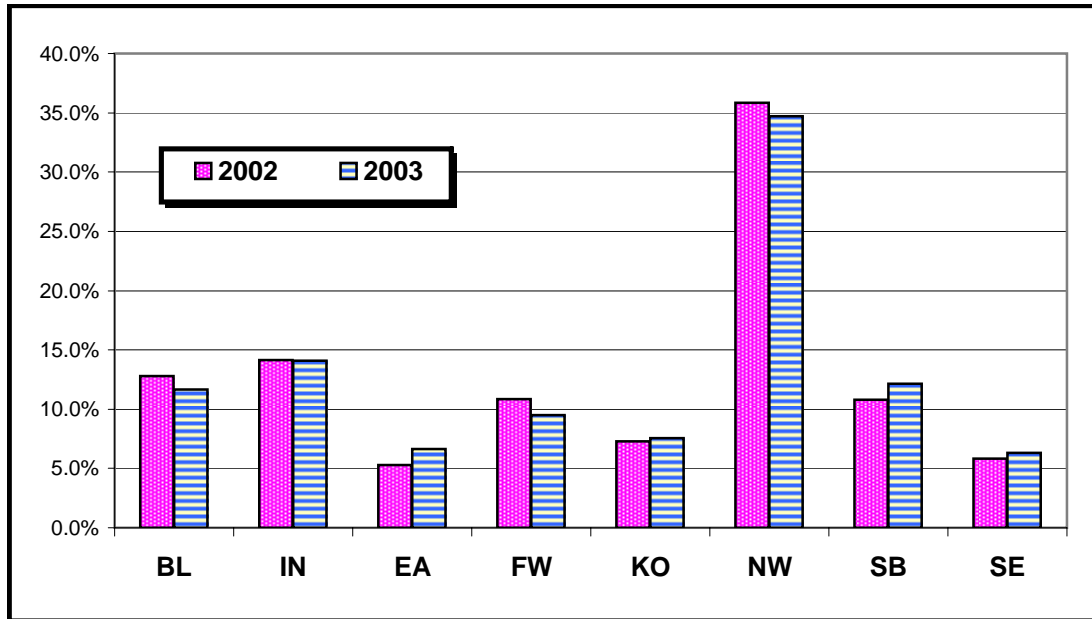
Campus Enrollment Summary

By Ethnicity

	American Indian			Asian-American			African-American			Hispanic			Other		
	#	% Change	% of Campus Total	#	% Change	% of Campus Total	#	% Change	% of Campus Total	#	% Change	% of Campus Total	#	% Change	% of Campus Total
BL	17	0.0%	0.2%	283	-11.2%	3.4%	490	-7.4%	5.9%	180	1.1%	2.2%	7,347	0.1%	88.3%
IN	25	78.6%	0.3%	334	10.8%	3.5%	859	5.1%	8.9%	141	9.3%	1.5%	8,279	5.0%	85.9%
EA	6	-25.0%	0.8%	4	0.0%	0.5%	37	76.2%	4.8%	4	250.0%	0.5%	715	2.3%	93.3%
FW	7	75.0%	0.4%	26	11.5%	1.5%	97	-15.7%	5.7%	30	20.0%	1.8%	1,527	1.9%	90.5%
KO	4	n/a	0.5%	8	-37.5%	1.0%	38	25.8%	4.9%	8	-38.5%	1.0%	712	6.0%	92.5%
NW	7	16.7%	0.4%	35	59.1%	1.8%	478	-2.0%	24.7%	152	10.1%	7.9%	1,263	7.1%	65.3%
SB	12	9.1%	0.5%	42	63.0%	1.6%	200	12.8%	7.6%	65	0.0%	2.5%	2,311	0.9%	87.9%
SE	8	100.0%	0.3%	23	43.8%	1.0%	102	5.2%	4.3%	15	-5.9%	0.6%	2,200	-0.5%	93.7%

FW - IU Students Only

Minority Enrollment as Percent of Total



Matriculants by Campus

	Heads		Hours	
	#	% Change	#	% Change
BL	1,079	-4.3%	4,882.0	-3.3%
IN	790	-14.5%	3,010.5	-14.8%
EA	107	44.6%	423.0	35.6%
FW	117	-12.7%	475.0	-7.4%
KO	90	28.6%	401.0	26.5%
NW	164	-9.9%	666.0	-4.4%
SB	210	-9.1%	838.0	-5.6%
SE	154	4.8%	623.0	10.9%

Source Information

Todd Schmitz, Dir., Reporting & Research Services
 Lisa Newlin-Blackwell, Management Reporting Analyst

Poplars 018 (812) 855-9893
<http://www.indiana.edu/~urr/>