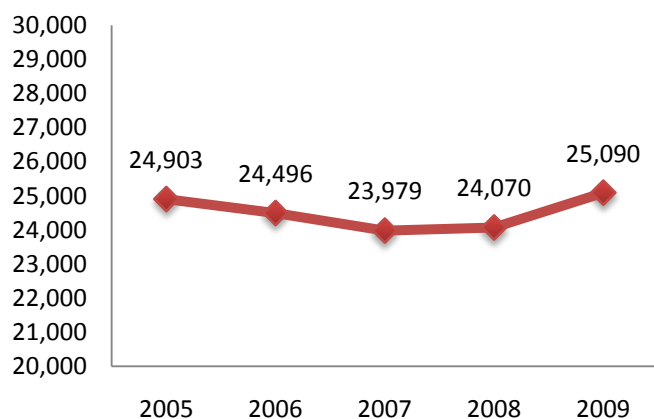
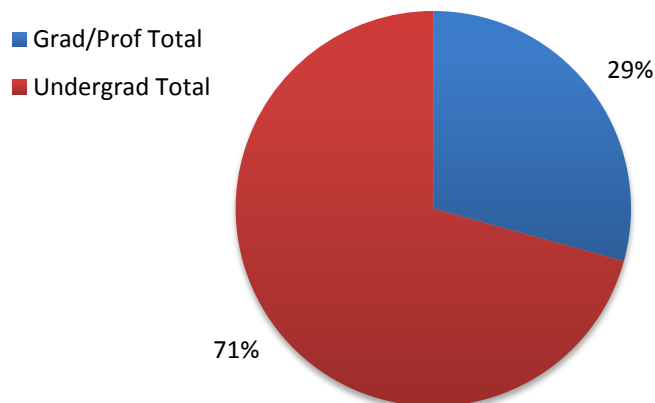
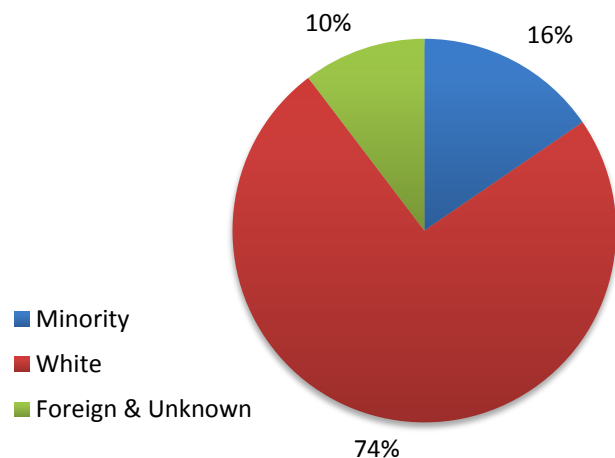


**IU Historical Enrollment
Second Summer Session**

IU Enrollment By Level

IU Enrollment By Ethnicity

University Enrollment Summary

	Count	% of total	% change ¹
Headcount	25,090		4.2%
Credit Hours	99,455.5		3.0%
FTE	7,057.4		2.5%

Students By Level and Class

Undergrad Total	17,743	70.7%	7.5%
Degree-seeking	15,827	63.1%	8.1%
Non-Degree	1,916	7.6%	2.2%
Grad/Prof Total	7,347	29.3%	-2.8%
Grad Degree-seeking	5,269	21.0%	-0.8%
Prof Degree-seeking	389	1.6%	2.6%
Non-Degree	1,689	6.7%	-9.5%

Freshman	2,262	14.3%	12.6%
Sophomore	2,980	18.8%	7.0%
Junior	3,718	23.5%	8.7%
Senior	6,867	43.4%	6.9%

Undergraduates By Courseload²

FT-UG	4,794	30.3%	6.1%
PT-UG	11,033	69.7%	9.1%

Sex

Male	10,569	42.1%	8.0%
Female	14,521	57.9%	1.6%

Ethnicity

African American	2,226	8.9%	10.5%
American Indian	81	0.3%	20.9%
Asian	837	3.3%	8.3%
Hispanic	731	2.9%	6.7%
White	18,620	74.2%	3.4%
Foreign	1,593	6.3%	-4.6%
Unknown	1,002	4.0%	16.4%

Residency

Resident	19,830	79.0%	5.2%
Non-Resident	5,260	21.0%	0.6%
Reciprocity ³	888	16.9%	24.9%

¹ Compared with Second Summer Session, 2008

² Degree-seeking only

³ Portion of non-resident enrollments that are reciprocity

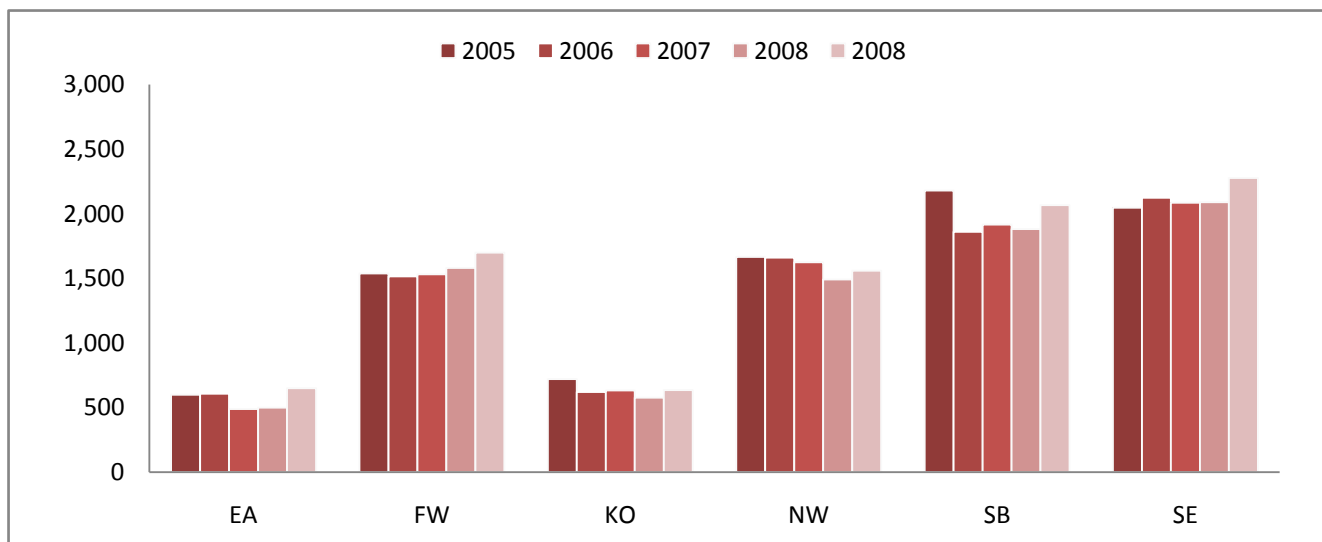
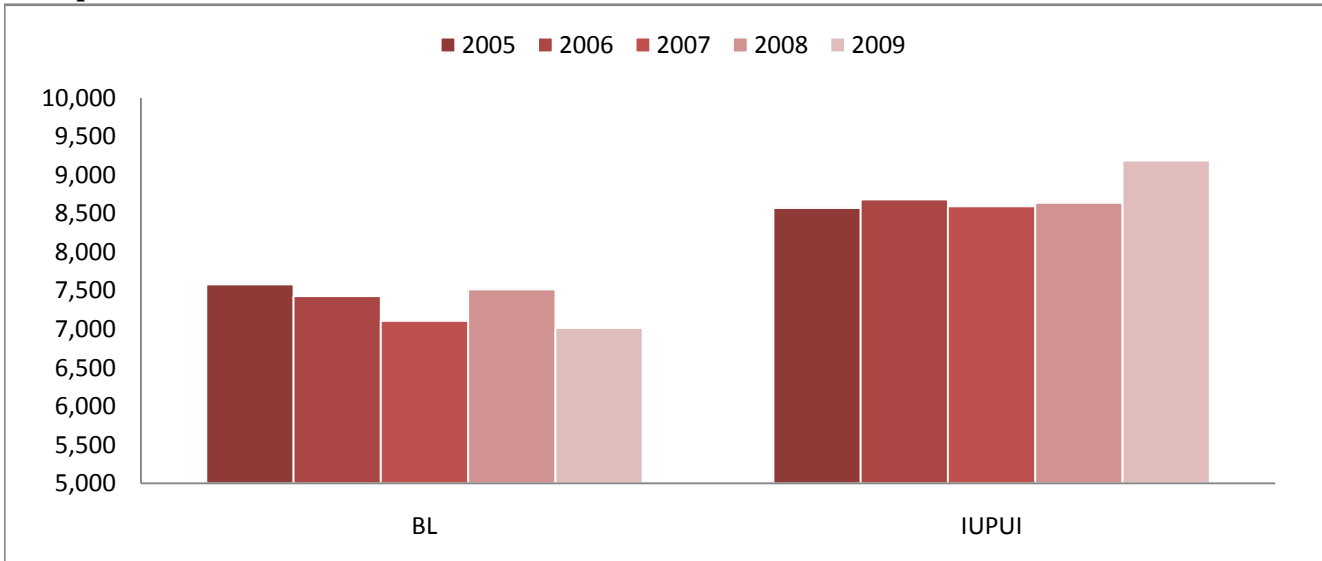
Campus Enrollment Summary

	Headcount			Credit Hours			FTE		
	Count	%	%	Count	%	%	Count	%	%
		of total	change ¹		of total	change ¹		of total	change ¹
Bloomington	7,015	28.0%	-4.1%	29,327.0	29.5%	-3.9%	2,098.1	29.7%	-4.6%
Indianapolis	9,188	36.6%	6.4%	35,893.5	36.1%	5.2%	2,556.1	36.2%	5.1%
East	650	2.6%	30.3%	2,691.0	2.7%	26.4%	184.3	2.6%	25.4%
Fort Wayne*	1,699	6.8%	7.5%	6,572.0	6.6%	7.4%	464.4	6.6%	6.6%
Kokomo	635	2.5%	10.2%	2,324.0	2.3%	2.7%	158.5	2.2%	2.3%
Northwest	1,559	6.2%	4.6%	6,171.0	6.2%	1.2%	433.6	6.1%	1.0%
South Bend	2,067	8.2%	9.8%	7,673.0	7.7%	7.6%	537.7	7.6%	6.3%
Southeast	2,277	9.1%	9.0%	8,804.0	8.9%	8.1%	624.9	8.9%	7.2%

¹ Compared with Second Summer Session, 2008

* IU students only

Campus Historical Second Summer Session Enrollment

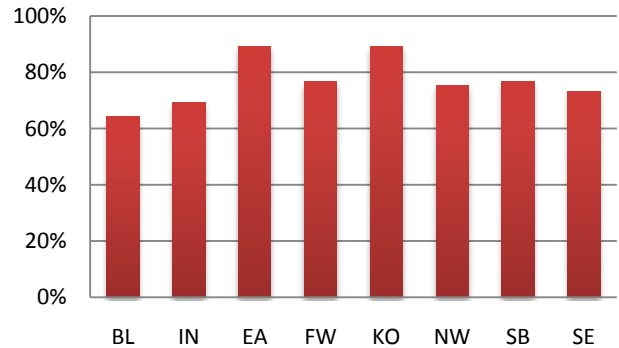


Campus Enrollment Summary

Level of Enrollment (including non-degree)

	Undergraduate			Graduate/Professional		
	Count	% of campus		Count	% of campus	
		total	% change ¹		total	% change ¹
Bloomington	4,499	64.1%	-1.9%	2,516	35.9%	-7.8%
Indianapolis	6,366	69.3%	8.1%	2,822	30.7%	2.7%
East	580	89.2%	29.8%	70	10.8%	34.6%
Fort Wayne*	1,301	76.6%	13.1%	398	23.4%	-7.4%
Kokomo	567	89.3%	12.1%	68	10.7%	-2.9%
Northwest	1,175	75.4%	5.9%	384	24.6%	0.8%
South Bend	1,586	76.7%	16.6%	481	23.3%	-7.9%
Southeast	1,669	73.3%	14.2%	608	26.7%	-3.0%

Percent of Total that is Undergraduate



Undergraduates by Class[†]

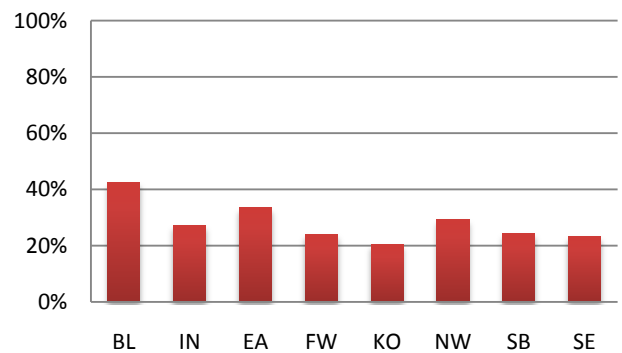
	Freshman			Sophomore			Junior			Senior		
	Count	% of campus		Count	% of campus		Count	% of campus		Count	% of campus	
		total	% change ¹		total	% change ¹		total	% change ¹		total	% change ¹
Bloomington	661	16.6%	-0.9%	375	9.4%	-15.3%	1,034	26.0%	-5.8%	1,903	47.9%	7.1%
Indianapolis	446	8.1%	6.7%	1,112	20.1%	8.4%	1,275	23.1%	8.1%	2,694	48.7%	4.9%
East	99	17.8%	2.1%	140	25.1%	55.6%	144	25.9%	39.8%	174	31.2%	33.8%
Fort Wayne*	225	13.2%	32.4%	282	16.6%	8.5%	252	14.8%	6.8%	470	27.7%	13.3%
Kokomo	112	17.6%	51.4%	114	18.0%	2.7%	101	15.9%	14.8%	190	29.9%	6.1%
Northwest	201	12.9%	18.9%	287	18.4%	-3.4%	249	16.0%	17.5%	367	23.5%	5.8%
South Bend	271	13.1%	19.4%	343	16.6%	28.9%	279	13.5%	53.3%	449	21.7%	1.1%
Southeast	247	10.8%	32.8%	327	14.4%	12.0%	384	16.9%	19.3%	620	27.2%	10.1%

[†] Degree-seeking only

Undergraduate Enrollment Status[†]

	Full-time Undergrad			Part-time Undergrad		
	Count	% of campus		Count	% of campus	
		total	% change ¹		total	% change ¹
Bloomington	1,687	42.5%	4.3%	2,286	57.5%	-3.5%
Indianapolis	1,502	27.2%	4.2%	4,025	72.8%	7.3%
East	186	33.4%	35.8%	371	66.6%	31.1%
Fort Wayne*	296	24.1%	11.3%	933	75.9%	14.5%
Kokomo	105	20.3%	7.1%	412	79.7%	16.4%
Northwest	323	29.3%	-6.6%	781	70.7%	15.0%
South Bend	328	24.4%	14.3%	1,014	75.6%	21.9%
Southeast	367	23.3%	11.9%	1,211	76.7%	17.0%

Percent of Undergraduate that is Full-time



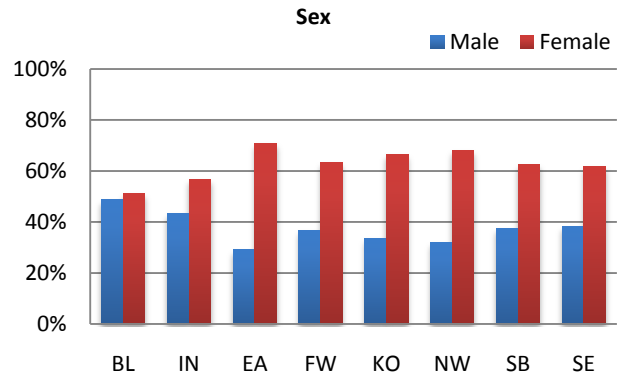
¹ Compared with Second Summer Session, 2008

*IU students only

Campus Enrollment Summary

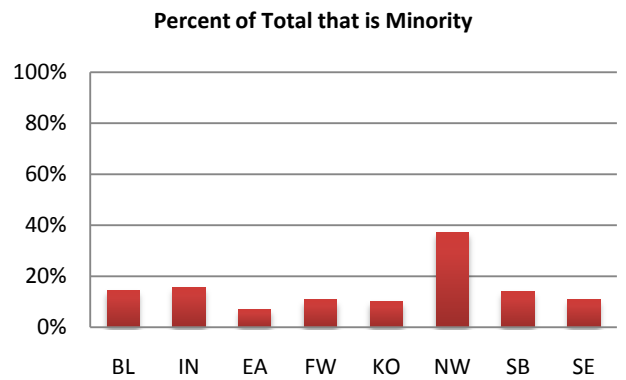
Sex

	Male			Female		
	Count	% of campus total	% change ¹	Count	% of campus total	% change ¹
Bloomington	3,417	48.7%	1.5%	3,598	51.3%	-8.8%
Indianapolis	3,983	43.4%	8.3%	5,205	56.6%	4.9%
East	189	29.1%	27.7%	461	70.9%	31.3%
Fort Wayne*	624	36.7%	7.8%	1,075	63.3%	7.4%
Kokomo	213	33.5%	26.0%	422	66.5%	3.7%
Northwest	499	32.0%	10.4%	1,060	68.0%	2.0%
South Bend	774	37.4%	15.7%	1,293	62.6%	6.6%
Southeast	870	38.2%	20.7%	1,407	61.8%	2.9%



Ethnicity

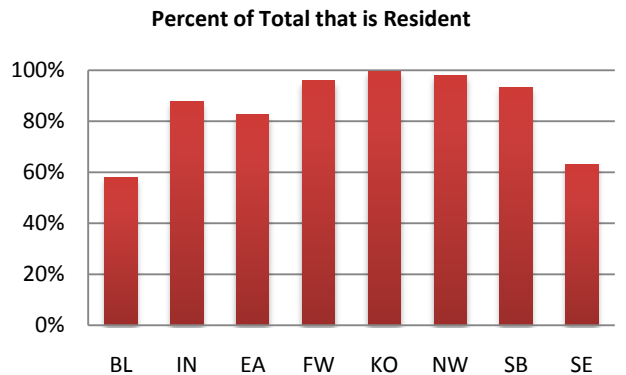
	Domestic Minority			Other		
	Count	% of campus total	% change ¹	Count	% of campus total	% change ¹
Bloomington	1,023	14.6%	1.6%	5,992	85.4%	-5.0%
Indianapolis	1,447	15.7%	10.8%	7,741	84.3%	5.6%
East	45	6.9%	55.2%	605	93.1%	28.7%
Fort Wayne*	182	10.7%	2.2%	1,517	89.3%	8.2%
Kokomo	64	10.1%	82.9%	571	89.9%	5.5%
Northwest	578	37.1%	0.5%	981	62.9%	7.1%
South Bend	290	14.0%	23.9%	1,777	86.0%	7.8%
Southeast	246	10.8%	40.6%	2,031	89.2%	6.1%



	African American			American Indian			Asian American			Hispanic		
	Count	% of campus total	% change ¹	Count	% of campus total	% change ¹	Count	% of campus total	% change ¹	Count	% of campus total	% change ¹
Bloomington	545	7.8%	5.2%	24	0.3%	60.0%	283	4.0%	1.1%	171	2.4%	-11.9%
Indianapolis	836	9.1%	12.2%	17	0.2%	-22.7%	392	4.3%	12.3%	202	2.2%	6.3%
East	22	3.4%	37.5%	5	0.8%	150.0%	8	1.2%	60.0%	10	1.5%	66.7%
Fort Wayne*	103	6.1%	6.2%	11	0.6%	120.0%	33	1.9%	0.0%	35	2.1%	-18.6%
Kokomo	31	4.9%	40.9%	5	0.8%	0.0%	8	1.3%	100.0%	20	3.1%	400.0%
Northwest	369	23.7%	-0.8%	6	0.4%	200.0%	45	2.9%	12.5%	158	10.1%	-1.9%
South Bend	154	7.5%	14.9%	8	0.4%	-20.0%	27	1.3%	-15.6%	101	4.9%	74.1%
Southeast	166	7.3%	50.9%	5	0.2%	-16.7%	41	1.8%	36.7%	34	1.5%	17.2%

Residency

	Resident			Non-resident		
	Count	% of campus total	% change ¹	Count	% of campus total	% change ¹
Bloomington	4,071	58.0%	-2.1%	2,944	42.0%	-6.8%
Indianapolis	8,068	87.8%	6.9%	1,120	12.2%	2.4%
East	536	82.5%	25.8%	114	17.5%	56.2%
Fort Wayne*	1,628	95.8%	8.0%	71	4.2%	-1.4%
Kokomo	632	99.5%	10.9%	3	0.5%	-50.0%
Northwest	1,530	98.1%	4.0%	29	1.9%	45.0%
South Bend	1,928	93.3%	10.0%	139	6.7%	7.8%
Southeast	1,437	63.1%	1.7%	840	36.9%	24.3%



¹ Compared with Second Summer Session, 2008

*IU students only